

1



ENG: Install the software. The software is required for your gaming accessories to work.

L2: Lorem ipsum dolor sit amet. Lorem ipsum dolor sit amet. Lorem ipsum dolor sit amet. Lorem ipsum dolor sit amet.

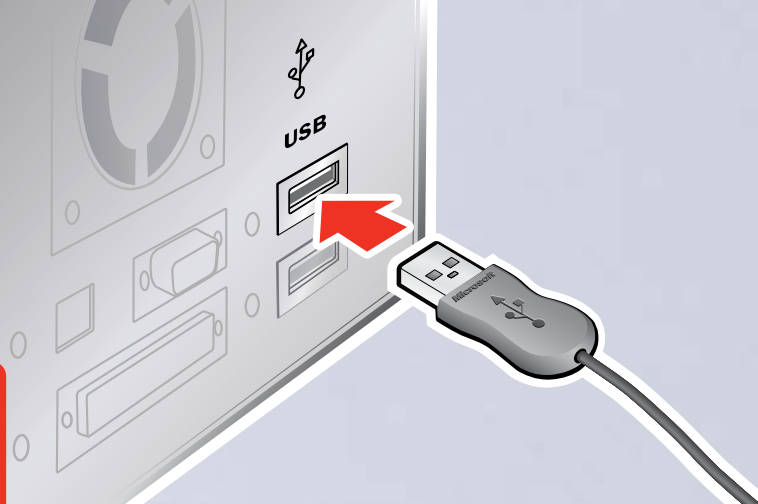
L3: Lorem ipsum dolor sit amet. Lorem ipsum dolor sit amet. Lorem ipsum dolor sit amet. Lorem ipsum dolor sit amet.

L4: Lorem ipsum dolor sit amet. Lorem ipsum dolor sit amet. Lorem ipsum dolor sit amet. Lorem ipsum dolor sit amet.

L5: Lorem ipsum dolor sit amet. Lorem ipsum dolor sit amet. Lorem ipsum dolor sit amet. Lorem ipsum dolor sit amet. Lorem ipsum dolor sit amet.

L6: Lorem ipsum dolor sit amet. Lorem ipsum dolor sit amet. Lorem ipsum dolor sit amet. Lorem ipsum dolor sit amet. Lorem ipsum dolor sit amet.

2



ENG: Connect the receiver to a USB port on your computer.

L2: Lorem ipsum dolor sit amet. Lorem ipsum dolor sit amet. Lorem ipsum dolor sit amet. Lorem ipsum dolor sit amet.

L3: Lorem ipsum dolor sit amet. Lorem ipsum dolor sit amet. Lorem ipsum dolor sit amet. Lorem ipsum dolor sit amet.

L4: Lorem ipsum dolor sit amet. Lorem ipsum dolor sit amet. Lorem ipsum dolor sit amet. Lorem ipsum dolor sit amet.

L5: Lorem ipsum dolor sit amet. Lorem ipsum dolor sit amet. Lorem ipsum dolor sit amet. Lorem ipsum dolor sit amet. Lorem ipsum dolor sit amet.

L6: Lorem ipsum dolor sit amet. Lorem ipsum dolor sit amet. Lorem ipsum dolor sit amet. Lorem ipsum dolor sit amet. Lorem ipsum dolor sit amet.

i



ENG: Turn on the compatible device (such as a controller) that you want to use with your receiver.

L2: Lorem ipsum dolor sit amet. Lorem ipsum dolor sit amet. Lorem ipsum dolor sit amet. Lorem ipsum dolor sit amet.

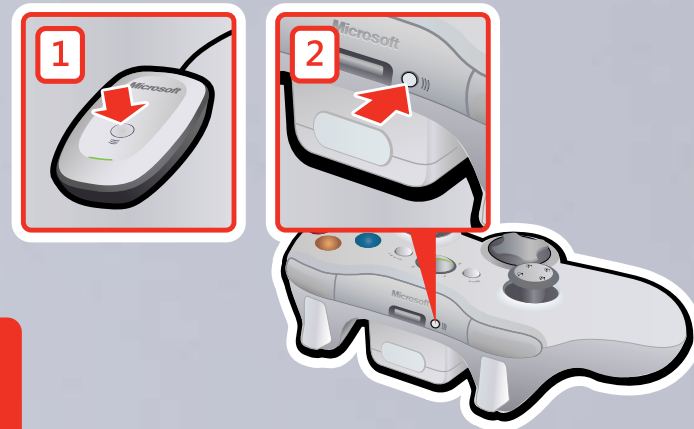
L3: Lorem ipsum dolor sit amet. Lorem ipsum dolor sit amet. Lorem ipsum dolor sit amet. Lorem ipsum dolor sit amet.

L4: Lorem ipsum dolor sit amet. Lorem ipsum dolor sit amet. Lorem ipsum dolor sit amet. Lorem ipsum dolor sit amet. Lorem ipsum dolor sit amet.

L5: Lorem ipsum dolor sit amet. Lorem ipsum dolor sit amet. Lorem ipsum dolor sit amet. Lorem ipsum dolor sit amet. Lorem ipsum dolor sit amet.

L6: Lorem ipsum dolor sit amet. Lorem ipsum dolor sit amet. Lorem ipsum dolor sit amet. Lorem ipsum dolor sit amet. Lorem ipsum dolor sit amet.

i



ENG: Connect a compatible device to the receiver by pressing the connect button on the receiver, and then on the device.

L2: Lorem ipsum dolor sit amet. Lorem ipsum dolor sit amet. Lorem ipsum dolor sit amet. Lorem ipsum dolor sit amet.

L3: Lorem ipsum dolor sit amet. Lorem ipsum dolor sit amet. Lorem ipsum dolor sit amet. Lorem ipsum dolor sit amet.

L4: Lorem ipsum dolor sit amet. Lorem ipsum dolor sit amet. Lorem ipsum dolor sit amet. Lorem ipsum dolor sit amet. Lorem ipsum dolor sit amet.

L5: Lorem ipsum dolor sit amet. Lorem ipsum dolor sit amet. Lorem ipsum dolor sit amet. Lorem ipsum dolor sit amet. Lorem ipsum dolor sit amet.

L6: Lorem ipsum dolor sit amet. Lorem ipsum dolor sit amet. Lorem ipsum dolor sit amet. Lorem ipsum dolor sit amet. Lorem ipsum dolor sit amet.





- ENG: Press the Xbox Guide button to show the status of your device (except when playing a game in full-screen mode).
- L2: Lorem ipsum dolor sit amet. Lorem ipsum dolor sit amet. Lorem ipsum dolor sit amet. Lorem ipsum dolor sit amet.
- L3: Lorem ipsum dolor sit amet. Lorem ipsum dolor sit amet. Lorem ipsum dolor sit amet. Lorem ipsum dolor sit amet.
- L4: Lorem ipsum dolor sit amet. Lorem ipsum dolor sit amet. Lorem ipsum dolor sit amet. Lorem ipsum dolor sit amet.
- L5: Lorem ipsum dolor sit amet. Lorem ipsum dolor sit amet. Lorem ipsum dolor sit amet. Lorem ipsum dolor sit amet.
- L6: Lorem ipsum dolor sit amet. Lorem ipsum dolor sit amet. Lorem ipsum dolor sit amet. Lorem ipsum dolor sit amet.



- ENG: Start > All Programs > Microsoft Xbox 360 Accessories > Microsoft Xbox 360 Accessories Help
- L2: Lorem > Ipsum Dolor > Microsoft Amet Lorem Ipsum > Microsoft Sit Lorem Amet Ipsum
- L3: Lorem > Ipsum Dolor > Microsoft Amet Lorem Ipsum > Microsoft Sit Lorem Amet Ipsum
- L4: Lorem > Ipsum Dolor > Microsoft Amet Lorem Ipsum > Microsoft Sit Lorem Amet Ipsum
- L5: Lorem > Ipsum Dolor > Microsoft Amet Lorem Ipsum > Microsoft Sit Lorem Amet Ipsum
- L6: Lorem > Ipsum Dolor > Microsoft Amet Lorem Ipsum > Microsoft Sit Lorem Amet Ipsum

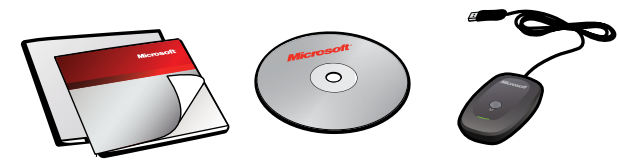
- ENG: For the latest information and updates, go to [www.microsoft.com/hardware](http://www.microsoft.com/hardware).  
⚠ For important safety information, see the Product Guide.
- L2: Lorem ipsum dolor sit amet, consectetur. Lorem ipsum dolor sit amet, consectetur. Dolor sit amet ipsum dolor sit. Lorem ipsum dolor sit amet amet. Lorem ipsum dolor www.microsoft.com/hardware.  
⚠ Lorem ipsum dolor sit amet.
- L3: Lorem ipsum dolor sit amet, consectetur. Lorem ipsum dolor sit amet, consectetur. Dolor sit amet ipsum dolor sit. Lorem ipsum dolor sit amet amet. Lorem ipsum dolor www.microsoft.com/hardware.  
⚠ Lorem ipsum dolor sit amet.
- L4: Lorem ipsum dolor sit amet, consectetur. Lorem ipsum dolor sit amet, consectetur. Dolor sit amet ipsum dolor sit. Lorem ipsum dolor sit amet amet. Lorem ipsum dolor www.microsoft.com/hardware.  
⚠ Lorem ipsum dolor sit amet.
- L5: Lorem ipsum dolor sit amet, consectetur. Lorem ipsum dolor sit amet, consectetur. Dolor sit amet ipsum dolor sit. Lorem ipsum dolor sit amet amet. Lorem ipsum dolor www.microsoft.com/hardware.  
⚠ Lorem ipsum dolor sit amet.
- L6: Lorem ipsum dolor sit amet, consectetur. Lorem ipsum dolor sit amet, consectetur. Dolor sit amet ipsum dolor sit. Lorem ipsum dolor sit amet amet. Lorem ipsum dolor www.microsoft.com/hardware.  
⚠ Lorem ipsum dolor sit amet.

Microsoft

Microsoft

www.microsoft.com/hardware

- ENG: Microsoft® gaming receiver for Windows®
- L2: Lorem ipsum dolor sit amet consectetur
- L3: Lorem ipsum dolor sit amet consectetur
- L4: Lorem ipsum dolor sit amet consectetur
- L5: Lorem ipsum dolor sit amet consectetur
- L6: Lorem ipsum dolor sit amet consectetur



0006 PartNo.X00-00000-01

# Microsoft Product Guide

Read this guide for important safety and health information and the terms of the Warranty that cover the Microsoft® device that you have purchased.

**Warning** Failure to properly set up, use, and care for this product can increase the risk of serious injury or death, or damage to the device or devices. Read this guide and keep all printed guides for future reference. For replacement guides, go to [www.microsoft.com/hardware](http://www.microsoft.com/hardware) or refer to the Customer Support Options section for contact information.

This document includes important information about many Microsoft products. Refer to sections that apply to the features of your device:

## Important Safety Information

- AC-Powered Devices
- Battery-Powered Devices
- Headset Devices
- Wireless Devices
- Keyboard and Mouse Devices
- Devices with Laser Pointers
- All Devices

- Laser and LED Specifications

- Regulatory Information

- Radio Frequency Technical Specifications

- Radio and TV Interference Regulations

- Disposal of Waste Electrical and Electronic Equipment

- Patent Information

- Customer Support Options

**This symbol identifies safety and health messages in this Product Guide and other product manuals.**

## Important Safety Information

### AC-Powered Devices

These precautions apply to all products that plug into a standard wall power outlet.

Failure to take the following precautions can result in serious injury or death from electric shock or fire or in damage to the device.

#### To select an appropriate power source for your device:

- Use only the power supply unit and AC power cord that came with your device or that you received from an authorized repair center.
- Confirm that your electrical outlet provides the type of power indicated on the power supply unit (in terms of voltage [V] and frequency [Hz]). If you are not sure of the type of power supplied to your home, consult a qualified electrician.
- Do not use non-standard power sources, such as generators or inverters, even if the voltage and frequency appear acceptable. Only use AC power provided by a standard wall outlet.
- Do not overload your wall outlet, extension cord, power strip, or other electrical receptacle. Confirm that they are rated to handle the total current (in amps [A]) drawn by the device (indicated on the power supply unit) and any other devices that are on the same circuit.

#### To avoid damaging the power cords and power supply:

- Protect the power cords from being walked on.
- Protect cords from being pinched or sharply bent, particularly where they connect to the power outlet, the power supply unit, and the device.
- Do not jerk, knot, sharply bend, or otherwise abuse the power cords.
- Do not expose the power cords to sources of heat.
- Keep children and pets away from the power cords. Do not allow them to bite or chew on them.
- When disconnecting the power cords, pull on the plug—do not pull on the cord.

If a power cord or power supply becomes damaged in any way, stop using it immediately. Unplug your device during lightning storms or when unused for long periods of time.

For devices with an AC power cord that connects to the power supply, always connect the power cord according to the following instructions:

- Plug the AC power cord into the power supply until it stops.
- Plug the other end of the AC power cord into the wall outlet.

### Battery-Powered Devices

These precautions apply to all products that use rechargeable or disposable batteries.

Improper use of batteries may result in battery fluid leakage, overheating, or explosion. Released battery fluid is corrosive and may be toxic. It can cause skin and eye burns, and is harmful if swallowed.

#### To reduce the risk of injury:

- Keep batteries out of reach of children.
- Do not heat, open, puncture, mutilate, or dispose of batteries in fire.
- Do not mix new and old batteries or batteries of different types (for example, carbon-zinc and alkaline batteries).
- Do not allow metal objects to touch the battery terminals on the device; they can become hot and cause burns.
- Remove the batteries if they are worn out or before storing your device for an extended period of time.
- Always remove old, weak, or worn-out batteries promptly and recycle or dispose of them in accordance with Local and National Disposal Regulations.
- If a battery leaks, remove all batteries, taking care to keep the leaked fluid from touching your skin or clothes. If fluid from the battery comes into contact with skin or clothes, flush skin with water immediately. Before inserting new batteries, thoroughly clean the battery compartment with a damp paper towel, or follow the battery manufacturer's recommendations for cleanup.

#### Disposable (non-rechargeable) batteries only:

- Caution** Risk of explosion if battery is replaced by an incorrect type. Use and replace only with the correct size and type (alkaline, zinc-carbon, or zinc-chloride) of batteries.

#### Rechargeable batteries only:

- Caution** Risk of explosion if battery is replaced by an incorrect type. Use and replace only with the same type and rating as the batteries provided.
- Charge only with the recharger provided with the product.

### Headset Devices

Extended exposure to high volumes when using a headset may result in temporary or permanent hearing loss.

### Wireless Devices

Before boarding any aircraft or packing a wireless device in luggage that will be checked, remove the batteries from the wireless device or turn the wireless device off (if it has an on/off switch). Wireless devices can transmit radio frequency (RF) energy, much like a cellular telephone, whenever batteries are installed and the wireless device is turned on (if it has an on/off switch).

### Keyboard and Mouse Devices

#### Health Warning

Use of a keyboard or mouse may be linked to serious injuries or disorders.

When using a computer, as with many activities, you may experience occasional discomfort in your hands, arms, shoulders, neck, or other parts of your body. However, if you experience symptoms such as persistent or recurring discomfort, pain, throbbing, aching, tingling, numbness, burning sensation, or stiffness, **DO NOT IGNORE THESE WARNING SIGNS. PROMPTLY SEE A QUALIFIED HEALTH PROFESSIONAL**, even if symptoms occur when you are not working at your computer. Symptoms like these can be associated with painful and sometimes permanently disabling injuries or disorders of the nerves, muscles, tendons, or other parts of the body. These musculoskeletal disorders (MSDs) include carpal tunnel syndrome, tendonitis, tenosynovitis, and other conditions.

While researchers are not yet able to answer many questions about MSDs, there is general agreement that many factors may be linked to their occurrence, including: overall health, stress and how one copes with it, medical and physical conditions, and how a person positions and uses his or her body during work and other activities (including use of a keyboard or mouse). The amount of time a person performs an activity may also be a factor.

Some guidelines that may help you work more comfortably with your computer and possibly reduce your risk of experiencing an MSD can be found in the "Healthy Computing Guide" installed with this device's software. If this device did not come with software, you can access the "Healthy Computing Guide" at [www.microsoft.com/hardware](http://www.microsoft.com/hardware) or (in the United States only) by calling (800) 360-7561 to request a CD at no charge.

If you have questions about how your own lifestyle, activities, or medical, or physical condition may be related to MSDs, see a qualified health professional.

### Devices with Laser Pointers

**Caution** Use of controls or adjustments, or performance of procedures other than those specified herein may result in hazardous radiation exposure.

- Do not stare into beam.
- Do not shine a laser pointer at anyone. Laser pointers are designed to illuminate inanimate objects.
- Do not allow minors to use a pointer unsupervised. Laser pointers are not toys.
- Do not point a laser pointer at a mirror-like (reflective) surface. A reflected beam can act like a direct beam on the eye.
- Do not disassemble the device.
- Do not use the device outside of its specified operating temperature range +41°F (+5°C) to +95°F (+35°C). If the device is exposed to an environment outside of its prescribed operation, turn off the device and allow the temperature to stabilize within the specified operating range before using the device.

### All Devices

#### Do Not Attempt Repairs

Do not attempt to take apart, open, service, or modify the hardware device or power supply. Doing so could present the risk of electric shock or other hazard. Any evidence of any attempt to open and/or modify the device, including any peeling, puncturing, or removal of any of the labels, will void the Limited Warranty.

### Laser and LED Specifications

**Caution** Use of controls or adjustments, or performance of procedures other than those specified herein may result in hazardous radiation exposure.

#### Laser Devices

This device complies with International Standard IEC 60825-1:2001-08 for a Class 1 and Class 2 laser product. This device also complies with 21 CFR 1040.10 and 1040.11 except for deviations pursuant to Laser Notice No. 50, dated July 26, 2001.

##### Class 1 Laser Devices

Beam description: Collimated (parallel) beam of infrared light (invisible to the user)  
Laser power output: < 716 microwatts (at 832 nanometers) to 834 microwatts (at 865 nanometers)  
Emitted laser wavelength: nominal: 850 nanometers, range: (832 – 865 nanometers)

A Class 1 laser product is safe under reasonably foreseeable conditions of operation as described by IEC 60825-1 and 21 CFR 1040.10. However, it is recommended that you not direct the laser beam (which is emitted from the bottom of the device) at anyone's eyes.

##### Class 2 Laser Devices

Beam description: Collimated (parallel) beam of light  
Laser power output: < 1 milliwatt  
Emitted laser wavelength: 630 – 670 nanometers

This optical device has no serviceable parts. The Class 2 laser beam is emitted from the front of the device.

#### Optical (LED) Devices

This product has been evaluated to comply with International Standard IEC 60825-1:1993/A2:2001

This product uses LEDs that are inherently Class 1.

### Regulatory Information

Tested to comply with FCC (U.S. Federal Communications Commission) Standards. For home or office use. Not intended for use in machinery, medical, or industrial applications. Any changes or modifications not expressly approved by Microsoft could void the user's authority to operate this device. This product is for use with NRTL-Listed (UL, CSA, ETL, etc.), and/or IEC/EN 60950 compliant (CE marked) Information Technology equipment. No serviceable parts included. This device is rated as a commercial product for operation at +41°F (+5°C) to +95°F (+35°C).



Model No: 1086

Microsoft Corporation; One Microsoft Way; Redmond, WA 98052-6399; U.S.A.  
United States: (800) 426-9400 Canada: (800) 933-4750

This equipment has been tested and found to comply with the limits for a Class B digital device, pursuant to Part 15 of the FCC rules. These limits are designed to provide reasonable protection against harmful interference in a residential installation. This equipment generates, uses, and can radiate radio frequency energy and, if not installed and used in accordance with the instructions, may cause harmful interference to radio communications. However, there is no guarantee that interference will not occur in a particular installation. If this equipment does cause harmful interference to radio or television reception, which can be determined by turning the equipment off and on, the user is encouraged to try to correct the interference by one or more of the following measures:

- Reorient or relocate the receiving antenna.
- Increase the separation between the equipment and receiver.
- Connect the equipment into an outlet on a circuit different from that to which the receiver is connected.
- Consult the dealer or an experienced radio/TV technician for help.

This device complies with Part 15 of the FCC Rules. Operation is subject to the following two conditions: (1) This device may not cause harmful interference, and (2) This device must accept any interference received, including interference that may cause undesired operation.

#### Caution:

Any changes or modifications not expressly approved by Microsoft could void the user's authority to operate the equipment.

#### Caution Exposure to radio frequency radiation

To comply with FCC RF exposure compliance requirements, a separation distance of at least 20 cm must be maintained between the antenna of this device and all persons. This device must not be co-located or operating in conjunction with any other antenna or transmitter.

This Class B digital apparatus complies with Part 15 of the U.S. Federal Communications Commission (FCC) rules, Canadian ICES-003, RSS-Gen, RSS-210, and RSS-310. Operation is subject to the following two conditions: (1) this device may not cause interference, and (2) this device must accept any interference received, including interference that may cause undesired operation.

The term "IC:" before the certification/registration number only signifies that the Industry Canada technical specifications were met.

Cet appareil numérique de la classe B est conforme aux normes NMB-003, CNR-Gen, CNR-210 et CNR-310 du Canada. Son fonctionnement est assujéti aux deux conditions suivantes : (1) Cet appareil ne peut pas provoquer d'interférences nuisibles et (2) cet appareil doit accepter toute interférence reçue, y compris les interférences pouvant entraîner un fonctionnement non désiré.

L'expression « IC : » avant le numéro d'homologation/enregistrement signifie seulement que les spécifications techniques édictées par Industrie Canada ont été respectées.

**This Class B digital apparatus complies with Canadian ICES-003.**

**Cet appareil numérique de la classe B est conforme à la norme NMB-003 du Canada.**

#### For Customers in Canada

This device complies with RSS 210 of Industry Canada (IC).

Operation is subject to the following two conditions:

(1) this device may not cause interference, and

(2) this device must accept any interference, including interference that may cause undesired operation of this device.

L' utilisation de ce dispositif est autorisée seulement aux conditions suivantes :

(1) il ne doit pas produire de brouillage et

(2) l' utilisateur du dispositif doit être prêt à accepter tout brouillage radioélectrique reçu, même si ce brouillage est susceptible de compromettre le fonctionnement du dispositif.

Exposure to radio frequency radiation

The installer of this radio equipment must ensure that the antenna is located or pointed such that it does not emit RF field in excess of Health Canada limits for the general population; consult Safety Code 6, obtainable from Health Canada's website at [www.hc-sc.gc.ca/rpb](http://www.hc-sc.gc.ca/rpb).

## Radio Frequency Technical Specifications

Radio frequency (RF) output power: < 54 dBµV/m at 3 m

Keyboard with two channels – RF frequencies: 27.095 MHz (channel 1), 27.195 MHz (channel 2)

Keyboard with a single channel – RF frequency: 27.195 MHz or 27.095 MHz

Mouse with two channels – RF frequencies: 27.045 MHz (channel 1), 27.145 MHz (channel 2)

Mouse with a single channel – RF frequency: 27.145 MHz or 27.045 MHz

## Radio and TV Interference Regulations

The Microsoft hardware device(s) can radiate RF energy. If not installed and used in strict accordance with the instructions given in the printed documentation and/or on-screen help files, the device may cause harmful interference with other radio-communications devices (for example AM/FM radios, televisions, baby monitors, cordless phones, etc).

There is, however, no guarantee that RF interference will not occur in a particular installation.

To determine if your hardware device is causing interference to other radio-communications devices, disconnect the device from your computer or remove the device's batteries (for a battery operated device). If the interference stops, it was probably caused by the device. If the interference continues after you disconnect the hardware device or remove the batteries, turn the computer off and then on again. If the interference stopped when the computer was off, check to see if one of the input/output (I/O) devices or one of the computer's internal accessory boards is causing the problem. Disconnect the I/O devices one at a time and see if the interference stops.

If this hardware device does cause interference, try the following measures to correct it:

- Relocate the antenna of the other radio-communications device (for example AM/FM radios, televisions, baby monitors, cordless phones, etc.) until the interference stops.
- Move the hardware device farther away from the radio or TV, or move it to one side or the other of the radio or TV.
- Plug the computer into a different power outlet so that the hardware device and radio or TV are on different circuits controlled by different circuit breakers or fuses.
- If necessary, ask your computer dealer or an experienced radio-TV technician for more suggestions. For more information about interference issues, go to the FCC Web site at:

<http://www.fcc.gov/cgb/consumerfacts/interference.html>

You can also call the FCC at 888-CALL FCC to request Interference and Telephone Interference fact sheets.

**For Bluetooth and 2.4 GHz devices only:** To comply with FCC RF exposure requirements, the following operating configurations must be satisfied: the antenna has been installed by the manufacturer and no changes can be made.

## Disposal of Waste Electrical and Electronic Equipment in the European Union and Other Countries/Regions with Separate Collection Systems

This symbol on the product or its packaging means that this product must not be disposed of with your household waste. Instead, it is your responsibility to hand this over to an applicable collection point for the recycling of electrical and electronic equipment. This separate collection and recycling will help to conserve natural resources and prevent potential negative consequences for human health and the environment, which inappropriate disposal could cause due to the possible presence of hazardous substances in electrical and electronic equipment. For more information about where to drop off your electrical and electronic waste, please contact your local city/municipality office, your household waste disposal service, or the shop where you purchased this product. Contact [weee@microsoft.com](mailto:weee@microsoft.com) for additional information on disposal of waste electrical and electronic equipment (WEEE).

## Patent Information

United States and/or international patents pending.

## Customer Support Options

If you have a question about your Microsoft hardware product, do the following:

- Check the system requirements for your product (located on the packaging) to ensure that your system is compatible.
- For complete product information, see the on-screen Help file installed with the device software.
- For the latest product information and software updates, go to the Microsoft Hardware Web site at [www.microsoft.com/hardware](http://www.microsoft.com/hardware).
- For up-to-date help about using or troubleshooting your device, go to the Microsoft Help and Support Web site at <http://support.microsoft.com>.

## NCC Warning Statement

Article 12

Without permission, any company, firm or user shall not alter the frequency, increase the power, or change the characteristics and functions of the original design of the certified lower power frequency electric machinery.

Article 14

The application of low power frequency electric machineries shall not affect the navigation safety nor interfere a legal communication, if an interference is found, the service will be suspended until improvement is made and the interference no longer exists.

The foregoing legal communication refers to the wireless telecommunication operated according to the telecommunications laws and regulations. The low power frequency electric machinery should be able to tolerate the interference of the electric wave radiation electric machineries and equipments for legal communications or industrial and scientific applications.

---

Information in this document, including URL and other Internet Web site references, is subject to change without notice. Unless otherwise noted, the example companies, organizations, products, domain names, e-mail addresses, logos, people, places, and events depicted herein are fictitious, and no association with any real company, organization, product, domain name, e-mail address, logo, person, place, or event is intended or should be inferred. Complying with all applicable copyright laws is the responsibility of the user. Without limiting the rights under copyright, no part of this document may be reproduced, stored in or introduced into a retrieval system, or transmitted in any form or by any means (electronic, mechanical, photocopying, recording, or otherwise), or for any purpose, without the express written permission of Microsoft Corporation.

Microsoft may have patents, patent applications, trademarks, copyrights, or other intellectual property rights covering subject matter in this document. Except as expressly provided in any written license agreement from Microsoft, the furnishing of this document does not give you any license to these patents, trademarks, copyrights, or other intellectual property.

Microsoft Corporation grants the purchaser of this product the right to reproduce one (1) copy of this user manual for each Hardware Device you purchased in the package.

© 2006 Microsoft Corporation. All rights reserved.

Microsoft, IntelliEye, IntelliMouse, and Windows are either registered trademarks or trademarks of Microsoft Corporation in the United States and/or other countries.

All other trademarks are property of their respective owners.