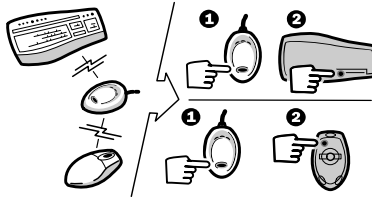


Microsoft®



Wireless Laser Keyboard 6000 v2.0

See software Help for patent information



Model: 1074

Made in China (S)

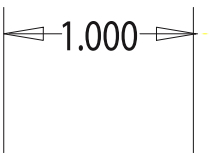
This device complies with part 15 of the FCC Rules. Operation is subject to the following two conditions: (1) This device may not cause harmful interference, and (2) this device must accept any interference received, including interference that may cause undesired operation.



This device has not been approved by the Federal Communications Commission.
This device is not, and may not be, offered for sale or lease,
or sold or leased until the approval of the FCC has been obtained.

X806611-001

1:1



OUTLINE DOES NOT PRINT

1 inch x 1 inch reference

PROPRIETARY NOTE

THE INFORMATION CONTAINED HEREON IS CONFIDENTIAL, IS SUBMITTED IN CONFIDENCE, AND IS PROPRIETARY INFORMATION OF MICROSOFT CORPORATION, AND SHALL ONLY BE USED IN THE FURTHERANCE OF, THE CONTRACT OF WHICH THIS DRAWING FORMS A PART, AND SHALL NOT, WITHOUT MICROSOFT CORPORATION'S PRIOR WRITTEN APPROVAL, BE REPRODUCED OR IN ANY WAY USED IN WHOLE OR IN PART IN CONNECTION WITH SERVICES OR EQUIPMENT OFFERED FOR SALE OF FURNISHED TO OTHERS. THE INFORMATION CONTAINED HEREON MAY NOT BE DISCLOSED TO A THIRD PARTY WITHOUT CONSENT OF MICROSOFT CORPORATION, AND THEN, ONLY PURSUANT TO A MICROSOFT APPROVED NONDISCLOSURE AGREEMENT.

TOLERANCES

UNLESS OTHERWISE SPECIFIED
DIMENSIONS ARE IN MILLIMETERS

DWN./DATE 3/31/2006
John Silverman RMB Vivid, Inc.
SOFTWARE VERSION
Adobe Illustrator 11.0

Microsoft®

DESCRIPTION
ARTWORK, PRODUCT
LABEL, PIPELINE

DRAWING NUMBER
N/A
FILE NAME
AW806611-001_OUTLINE.pdf

ARTWORK NUMBER

AW806611-001

REVISION

A