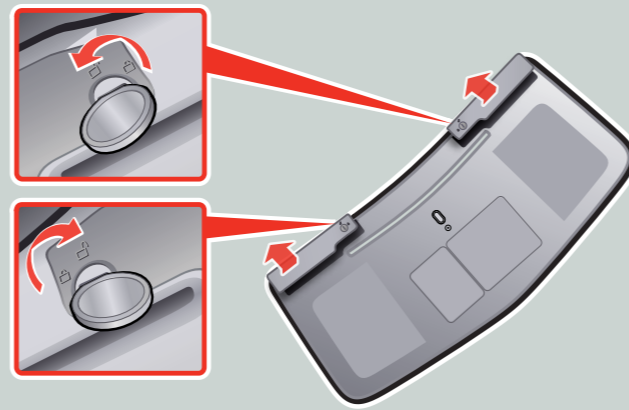


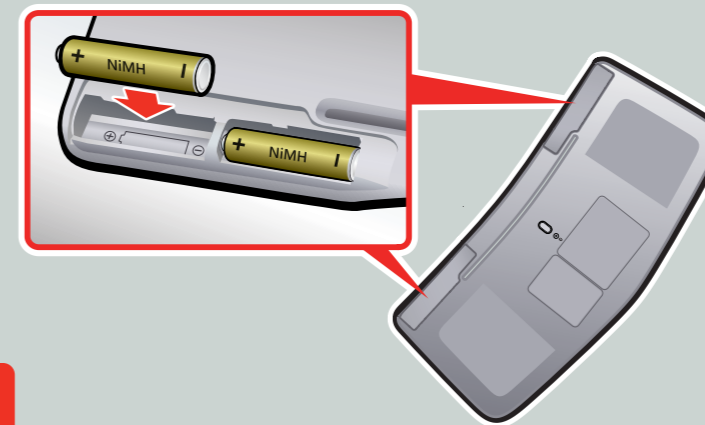
1

Insert the rechargeable NiMH battery into the mouse, and then close the cover.  
 ⚠ For safety information, see the Product Guide.  
 Lorem ipsum dolor sit amet ipsum dolor sit. Lorem ipsum dolor sit amet ipsum dolor sit. ⚠ Consectator sit dolor amet.  
 Lorem ipsum dolor sit amet ipsum dolor sit. Lorem ipsum dolor sit amet ipsum dolor sit. ⚠ Consectator sit dolor amet.  
 Lorem ipsum dolor sit amet ipsum dolor sit. Lorem ipsum dolor sit amet ipsum dolor sit. ⚠ Consectator sit dolor amet.  
 Lorem ipsum dolor sit amet ipsum dolor sit. Lorem ipsum dolor sit amet ipsum dolor sit. ⚠ Consectator sit dolor amet.  
 Lorem ipsum dolor sit amet ipsum dolor sit. Lorem ipsum dolor sit amet ipsum dolor sit. ⚠ Consectator sit dolor amet.  
 Lorem ipsum dolor sit amet ipsum dolor sit. Lorem ipsum dolor sit amet ipsum dolor sit. ⚠ Consectator sit dolor amet.



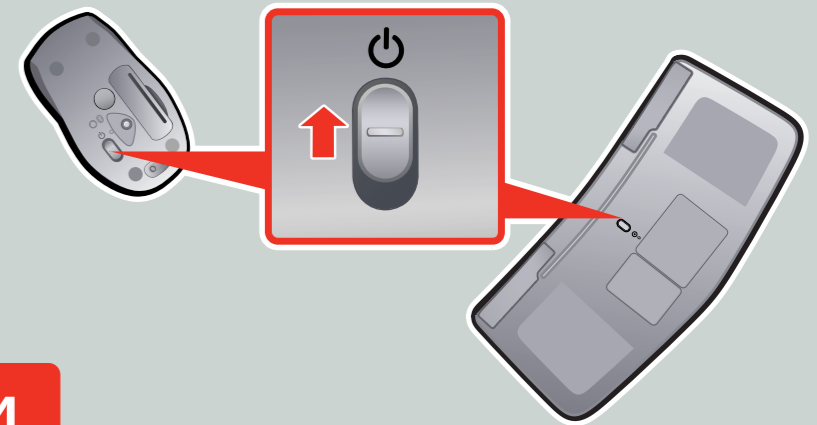
2

Using the edge of a coin, unlock and open both battery compartments on the underside of the keyboard.  
 Lorem ipsum dolor sit amet, consectetur. Lorem ipsum dolor sit amet, Lorem sit ipsum consectetur. Lorem ipsum dolor.  
 Lorem ipsum dolor sit amet, consectetur. Lorem ipsum dolor sit amet, Lorem sit ipsum consectetur. Lorem ipsum dolor.  
 Lorem ipsum dolor sit amet, consectetur. Lorem ipsum dolor sit amet, Lorem sit ipsum consectetur. Lorem ipsum dolor.  
 Lorem ipsum dolor sit amet, consectetur. Lorem ipsum dolor sit amet, Lorem sit ipsum consectetur. Lorem ipsum dolor.  
 Lorem ipsum dolor sit amet, consectetur. Lorem ipsum dolor sit amet, Lorem sit ipsum consectetur. Lorem ipsum dolor.



3

Insert the four rechargeable NiMH batteries into the keyboard, and then close and lock the covers. ⚠ See the Product Guide.  
 Lorem ipsum dolor sit amet ipsum. ⚠ Consectator sit dolor amet.  
 Lorem ipsum dolor sit amet ipsum. ⚠ Consectator sit dolor amet.  
 Lorem ipsum dolor sit amet ipsum. ⚠ Consectator sit dolor amet.  
 Lorem ipsum dolor sit amet ipsum. ⚠ Consectator sit dolor amet.  
 Lorem ipsum dolor sit amet ipsum. ⚠ Consectator sit dolor amet.

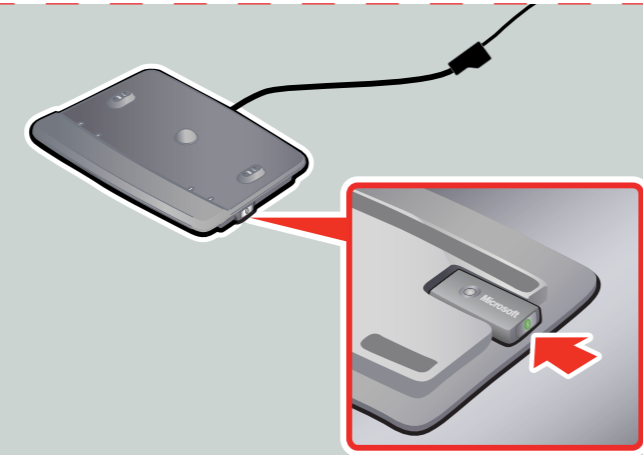


4

Ensure that both the keyboard and the mouse are turned on.  
 Lorem ipsum dolor sit amet, consectetur. Lorem ipsum dolor sit amet, Lorem sit ipsum consectetur. Lorem ipsum dolor.  
 Lorem ipsum dolor sit amet, consectetur. Lorem ipsum dolor sit amet, Lorem sit ipsum consectetur. Lorem ipsum dolor.  
 Lorem ipsum dolor sit amet, consectetur. Lorem ipsum dolor sit amet, Lorem sit ipsum consectetur. Lorem ipsum dolor.  
 Lorem ipsum dolor sit amet, consectetur. Lorem ipsum dolor sit amet, Lorem sit ipsum consectetur. Lorem ipsum dolor.  
 Lorem ipsum dolor sit amet, consectetur. Lorem ipsum dolor sit amet, Lorem sit ipsum consectetur. Lorem ipsum dolor.

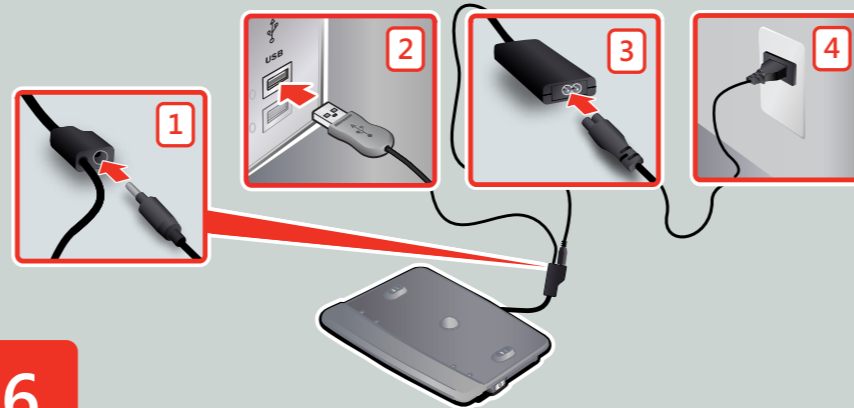
**START**  
 LOREM - LOREM - LOREM - LOREM - LOREM

- ENG: Microsoft® rechargeable wireless entertainment desktop
- L2: Lorem ipsum dolor sit amet consectetur
- L3: Lorem ipsum dolor sit amet consectetur
- L4: Lorem ipsum dolor sit amet consectetur
- L5: Lorem ipsum dolor sit amet consectetur
- L6: Lorem ipsum dolor sit amet consectetur



5

Insert the USB transceiver into the underside of the recharging hub.  
 Lorem ipsum dolor sit amet, consectetur. Lorem ipsum dolor sit amet, Lorem sit ipsum consectetur. Lorem ipsum dolor.  
 Lorem ipsum dolor sit amet, consectetur. Lorem ipsum dolor sit amet, Lorem sit ipsum consectetur. Lorem ipsum dolor.  
 Lorem ipsum dolor sit amet, consectetur. Lorem ipsum dolor sit amet, Lorem sit ipsum consectetur. Lorem ipsum dolor.  
 Lorem ipsum dolor sit amet, consectetur. Lorem ipsum dolor sit amet, Lorem sit ipsum consectetur. Lorem ipsum dolor.  
 Lorem ipsum dolor sit amet, consectetur. Lorem ipsum dolor sit amet, Lorem sit ipsum consectetur. Lorem ipsum dolor.



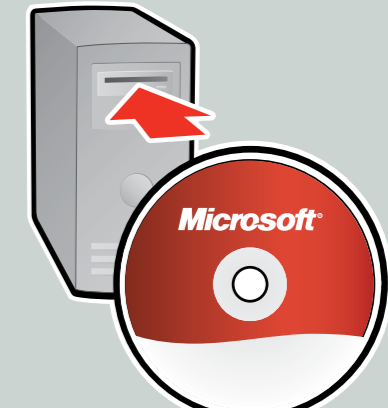
6

Follow the steps above to connect the charging station. ⚠ For safety information, see the Product Guide.  
 Lorem ipsum dolor sit amet ipsum. ⚠ Consectator sit dolor amet.  
 Lorem ipsum dolor sit amet ipsum. ⚠ Consectator sit dolor amet.  
 Lorem ipsum dolor sit amet ipsum. ⚠ Consectator sit dolor amet.  
 Lorem ipsum dolor sit amet ipsum. ⚠ Consectator sit dolor amet.  
 Lorem ipsum dolor sit amet ipsum. ⚠ Consectator sit dolor amet.



7

Charge the keyboard and mouse for at least one hour before continuing with the next step.  
 Lorem ipsum dolor sit amet, consectetur. Lorem ipsum dolor sit amet, Lorem sit ipsum consectetur. Lorem ipsum dolor.  
 Lorem ipsum dolor sit amet, consectetur. Lorem ipsum dolor sit amet, Lorem sit ipsum consectetur. Lorem ipsum dolor.  
 Lorem ipsum dolor sit amet, consectetur. Lorem ipsum dolor sit amet, Lorem sit ipsum consectetur. Lorem ipsum dolor.  
 Lorem ipsum dolor sit amet, consectetur. Lorem ipsum dolor sit amet, Lorem sit ipsum consectetur. Lorem ipsum dolor.  
 Lorem ipsum dolor sit amet, consectetur. Lorem ipsum dolor sit amet, Lorem sit ipsum consectetur. Lorem ipsum dolor.  
 Lorem ipsum dolor sit amet, consectetur. Lorem ipsum dolor sit amet, Lorem sit ipsum consectetur. Lorem ipsum dolor.

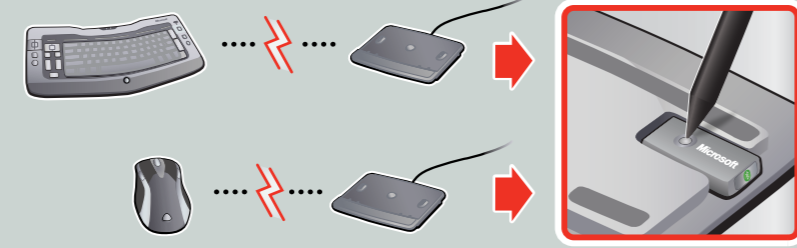


8

Install the software. The software adds keyboard and mouse features, and can help preserve battery life.  
 Lorem ipsum dolor sit amet, consectetur. Lorem ipsum dolor sit amet, Lorem sit ipsum consectetur. Lorem ipsum dolor.  
 Lorem ipsum dolor sit amet, consectetur. Lorem ipsum dolor sit amet, Lorem sit ipsum consectetur. Lorem ipsum dolor.  
 Lorem ipsum dolor sit amet, consectetur. Lorem ipsum dolor sit amet, Lorem sit ipsum consectetur. Lorem ipsum dolor.  
 Lorem ipsum dolor sit amet, consectetur. Lorem ipsum dolor sit amet, Lorem sit ipsum consectetur. Lorem ipsum dolor.  
 Lorem ipsum dolor sit amet, consectetur. Lorem ipsum dolor sit amet, Lorem sit ipsum consectetur. Lorem ipsum dolor.  
 Lorem ipsum dolor sit amet, consectetur. Lorem ipsum dolor sit amet, Lorem sit ipsum consectetur. Lorem ipsum dolor.

GLUE PRINT SIDE

To view Help: Start > All Programs > Microsoft Keyboard > Keyboard Help - or - Microsoft Mouse > Mouse Help  
Lorem Ipsum > Dolor Sit Amet > Lorem Ipsum solor > Sit Amet  
Lorem Ipsum > Dolor Sit Amet > Lorem Ipsum solor > Sit Amet  
Lorem Ipsum > Dolor Sit Amet > Lorem Ipsum solor > Sit Amet  
Lorem Ipsum > Dolor Sit Amet > Lorem Ipsum solor > Sit Amet  
Lorem Ipsum > Dolor Sit Amet > Lorem Ipsum solor > Sit Amet



Troubleshooting: To reconnect your devices, press and hold the transceiver button until the Connection wizard appears, and then follow the instructions.  
Lorem ipsum! Lorem ipsum amet consectetur dolor. Lorem sit ipsum dolor sit amet consectetur. Ipsum lorem dolor sit amet consectetur.  
Lorem ipsum! Lorem ipsum amet consectetur dolor. Lorem sit ipsum dolor sit amet consectetur. Ipsum lorem dolor sit amet consectetur.  
Lorem ipsum! Lorem ipsum amet consectetur dolor. Lorem sit ipsum dolor sit amet consectetur. Ipsum lorem dolor sit amet consectetur.  
Lorem ipsum! Lorem ipsum amet consectetur dolor. Lorem sit ipsum dolor sit amet consectetur. Ipsum lorem dolor sit amet consectetur.

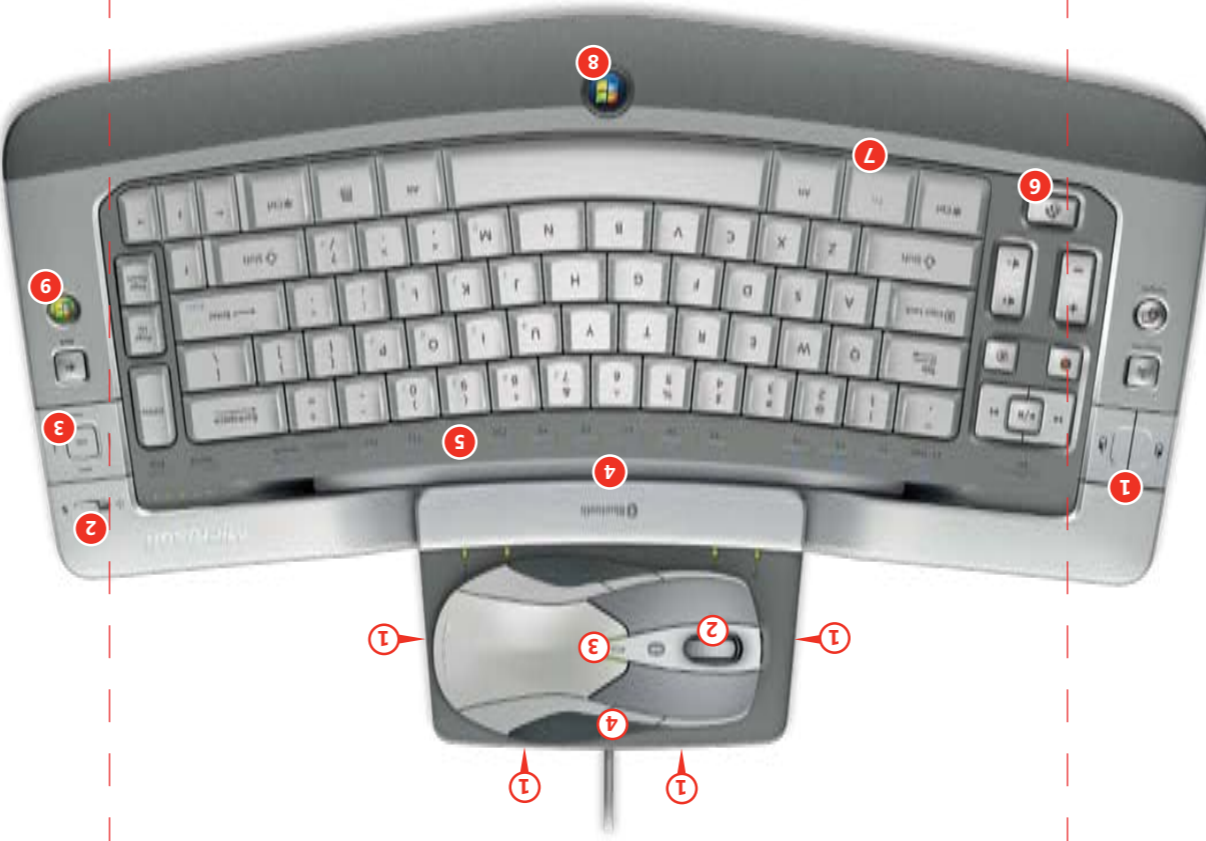
For the latest information and updates, go to [www.microsoft.com/hardware](http://www.microsoft.com/hardware).

- ⚠ For important safety information, see the Product Guide.
- Lorem ipsum dolor sit amet, consectetur. Lorem ipsum dolor sit amet, consectetur. Dolor sit amet ipsum dolor sit. Lorem ipsum dolor sit amet amet. Lorem ipsum dolor [www.microsoft.com/hardware](http://www.microsoft.com/hardware).
- ⚠ Lorem ipsum dolor sit amet.
- Lorem ipsum dolor sit amet, consectetur. Lorem ipsum dolor sit amet, consectetur. Dolor sit amet ipsum dolor sit. Lorem ipsum dolor sit amet amet. Lorem ipsum dolor [www.microsoft.com/hardware](http://www.microsoft.com/hardware).
- ⚠ Lorem ipsum dolor sit amet.
- Lorem ipsum dolor sit amet, consectetur. Lorem ipsum dolor sit amet, consectetur. Dolor sit amet ipsum dolor sit. Lorem ipsum dolor sit amet amet. Lorem ipsum dolor [www.microsoft.com/hardware](http://www.microsoft.com/hardware).
- ⚠ Lorem ipsum dolor sit amet.
- Lorem ipsum dolor sit amet, consectetur. Lorem ipsum dolor sit amet, consectetur. Dolor sit amet ipsum dolor sit. Lorem ipsum dolor sit amet amet. Lorem ipsum dolor [www.microsoft.com/hardware](http://www.microsoft.com/hardware).
- ⚠ Lorem ipsum dolor sit amet.

0007 PartNo.X00-00000-01

[www.microsoft.com/hardware](http://www.microsoft.com/hardware)

Microsoft



- ① USB ports
- ② Instant Viewer button
- ③ Battery status indicator
- ④ Magnifier button
- ⑤ Dolor sit lorem
- ⑥ Dolor sit lorem
- ⑦ Dolor sit lorem
- ⑧ Dolor sit lorem

[www.microsoft.com/hardware/ultimatekeyboard](http://www.microsoft.com/hardware/ultimatekeyboard)

- ④ Battery status indicator
- ⑤ Adjust backlighting
- ⑥ Windows® Start button
- ⑦ Fn key: Hold down Fn while pressing blue keys
- ⑧ Windows Media® Center button

- ① Left and right mouse buttons (on the keyboard)
- ② Switch between directional pad and mouse mode
- ③ Use as a touchpad in mouse mode, and as a directional pad in Media Center mode.
- ④ Dolor sit lorem
- ⑤ Dolor sit lorem
- ⑥ Dolor sit lorem
- ⑦ Dolor sit lorem
- ⑧ Dolor sit lorem



GLUE PRINT SIDE

GLUE PRINT SIDE