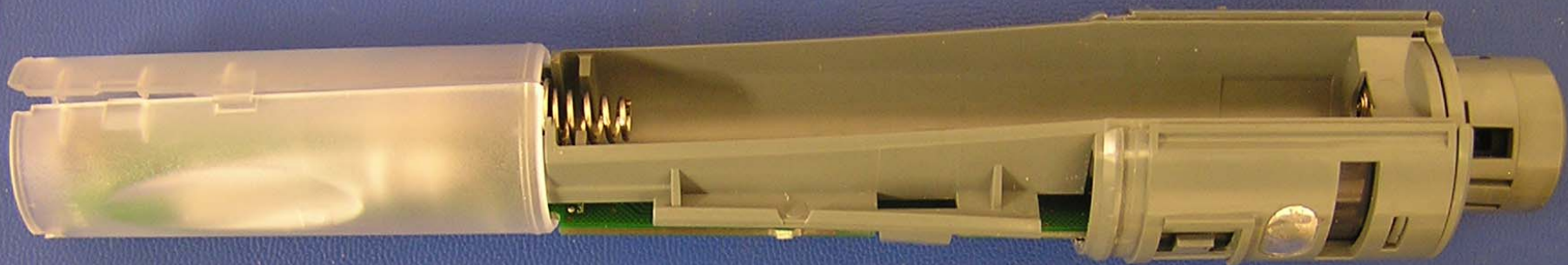


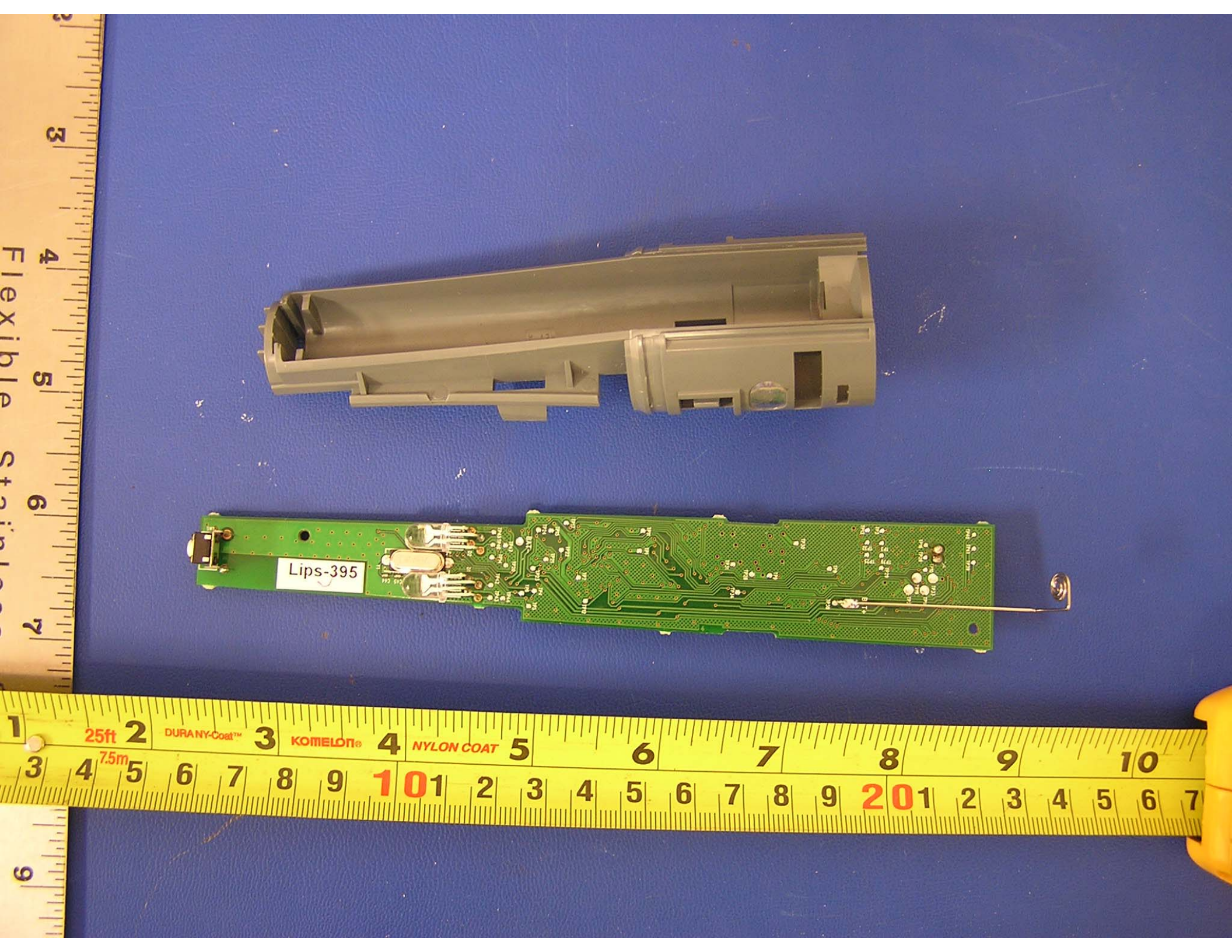
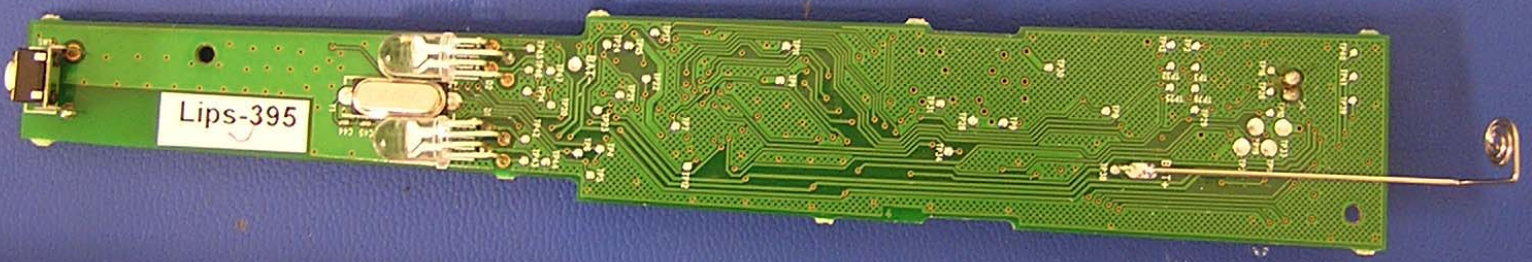
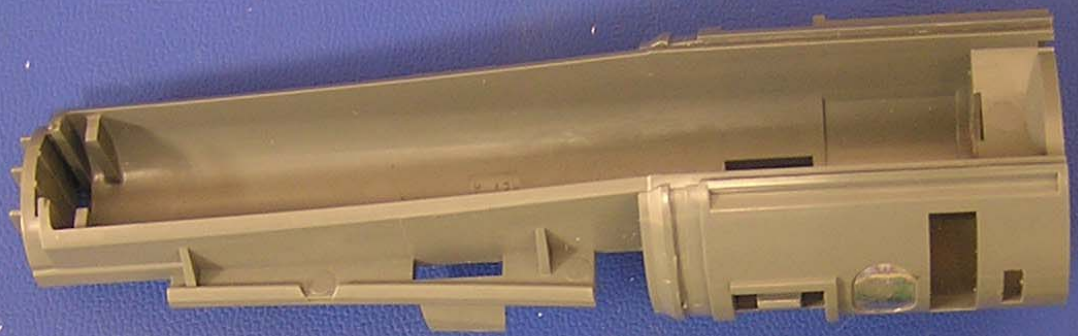
Flexible Stainless

Microsoft Corp
K 360
s EV3
088/400
1.15

Microsoft

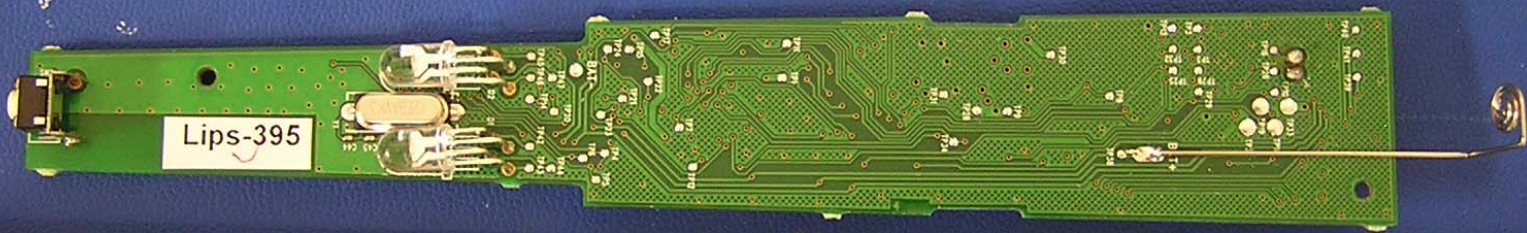
25ft 2 DURANY-Coat™ 3 KOMELDT® 4 NYLON COAT 5 6 7 8 9 10
7.5m 1 2 3 4 5 6 7 8 9 10 1 2 3 4 5 6 7 8 9 10 1 2 3 4 5 6 7





Flexible Stain

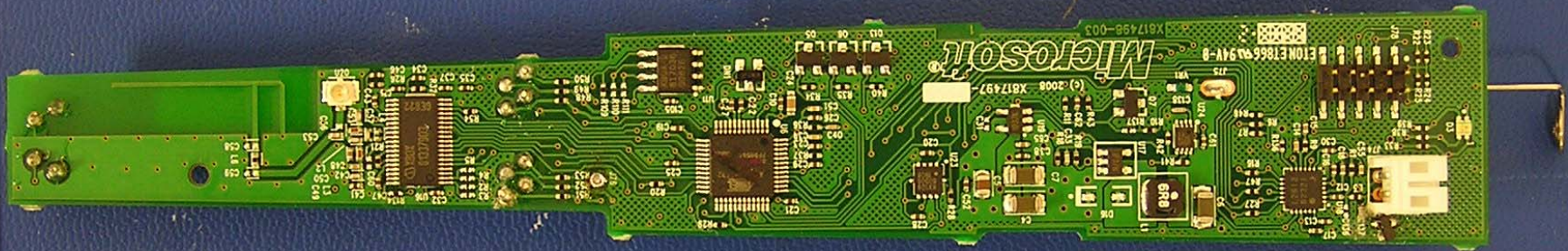
Steel

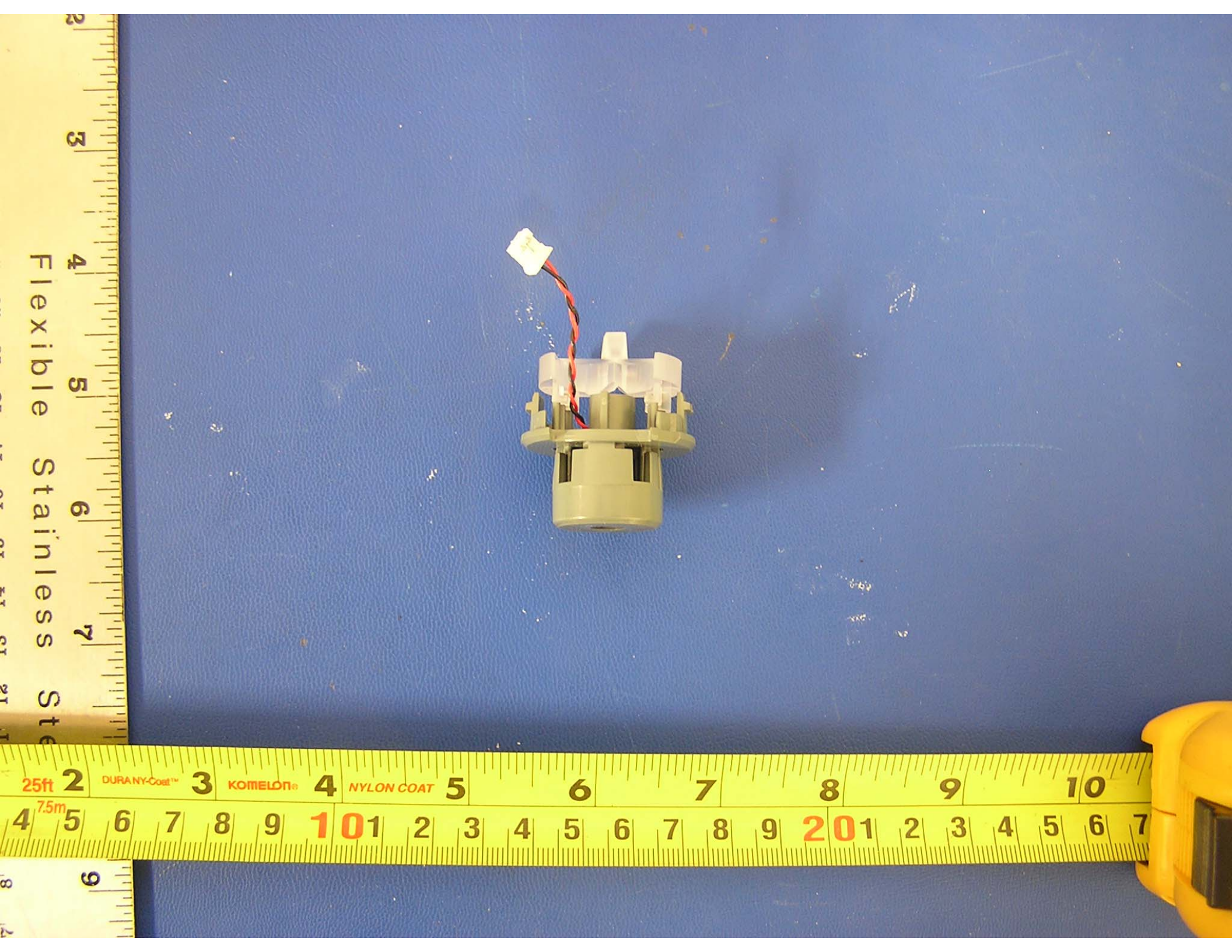


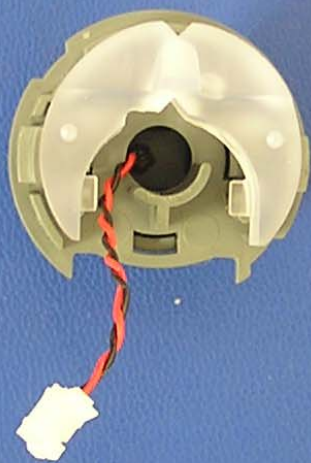
Lips-395

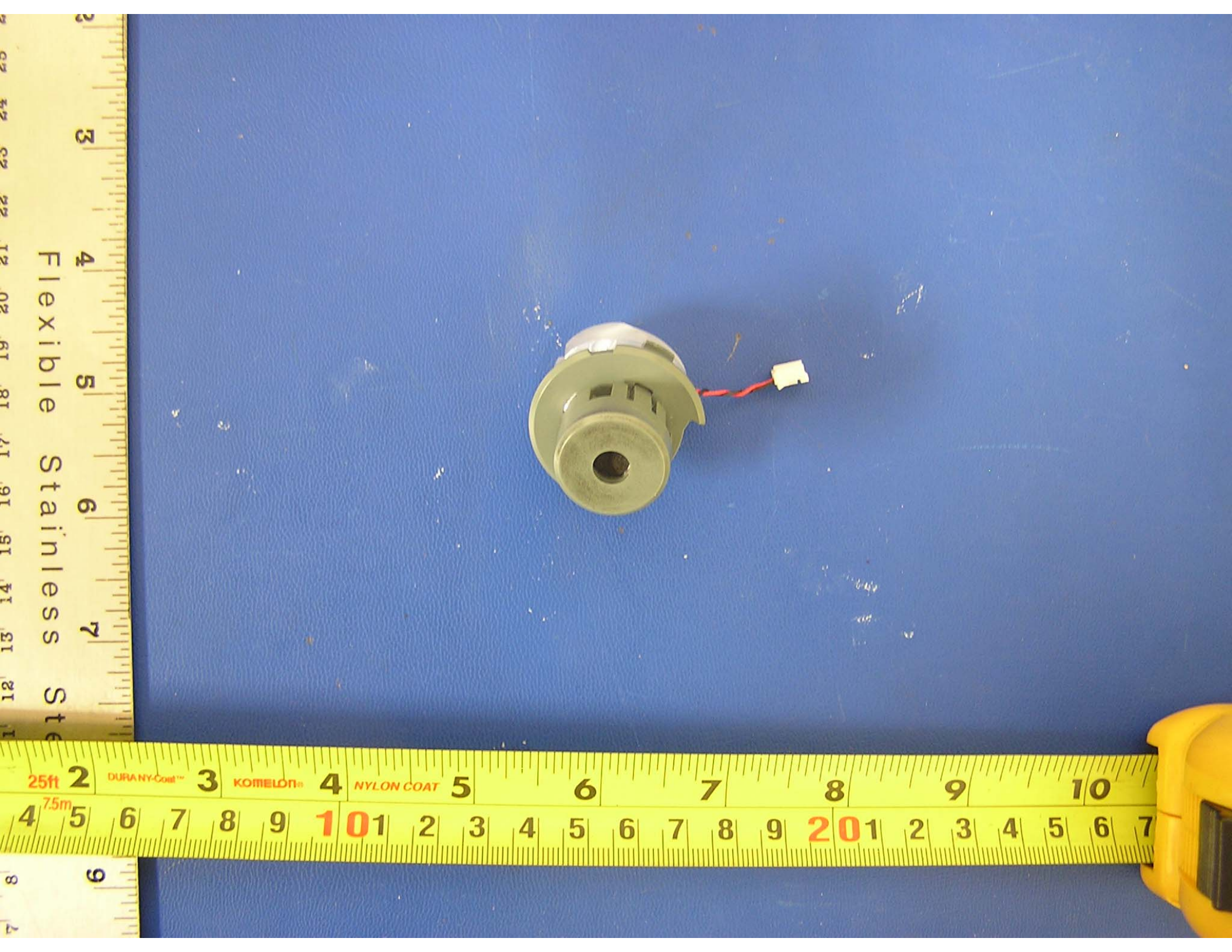
3
4
5
6
1
2
3
4
5
6
7
8
9

25ft 2 DURANY-Coat™ 3 KOMELON® 4 NYLON COAT 5 6 7 8 9 10
7.5m 1 2 3 4 5 6 7 8 9 10 11 12 13 14 15 16 17 18 19 20
201 2 3 4 5 6 7









A small, light-colored electronic component, possibly a sensor or actuator, is shown on a blue textured surface. The component has a cylindrical body with a central hole and a two-wire connector (red and black wires) extending from the side.

Flexible Stainless Steel

25ft 2 DURANY-Coil™ 3 KOMELON® 4 NYLON COAT 5 6 7 8 9 10
4 5 6 7 8 9 10 1 2 3 4 5 6 7 8 9 20 1 2 3 4 5 6 7