

hp

REF 97.0 dB $\mu$ V

AT 10 dB

MKR -10.25 kHz

.02 dB

PEAK

LOG

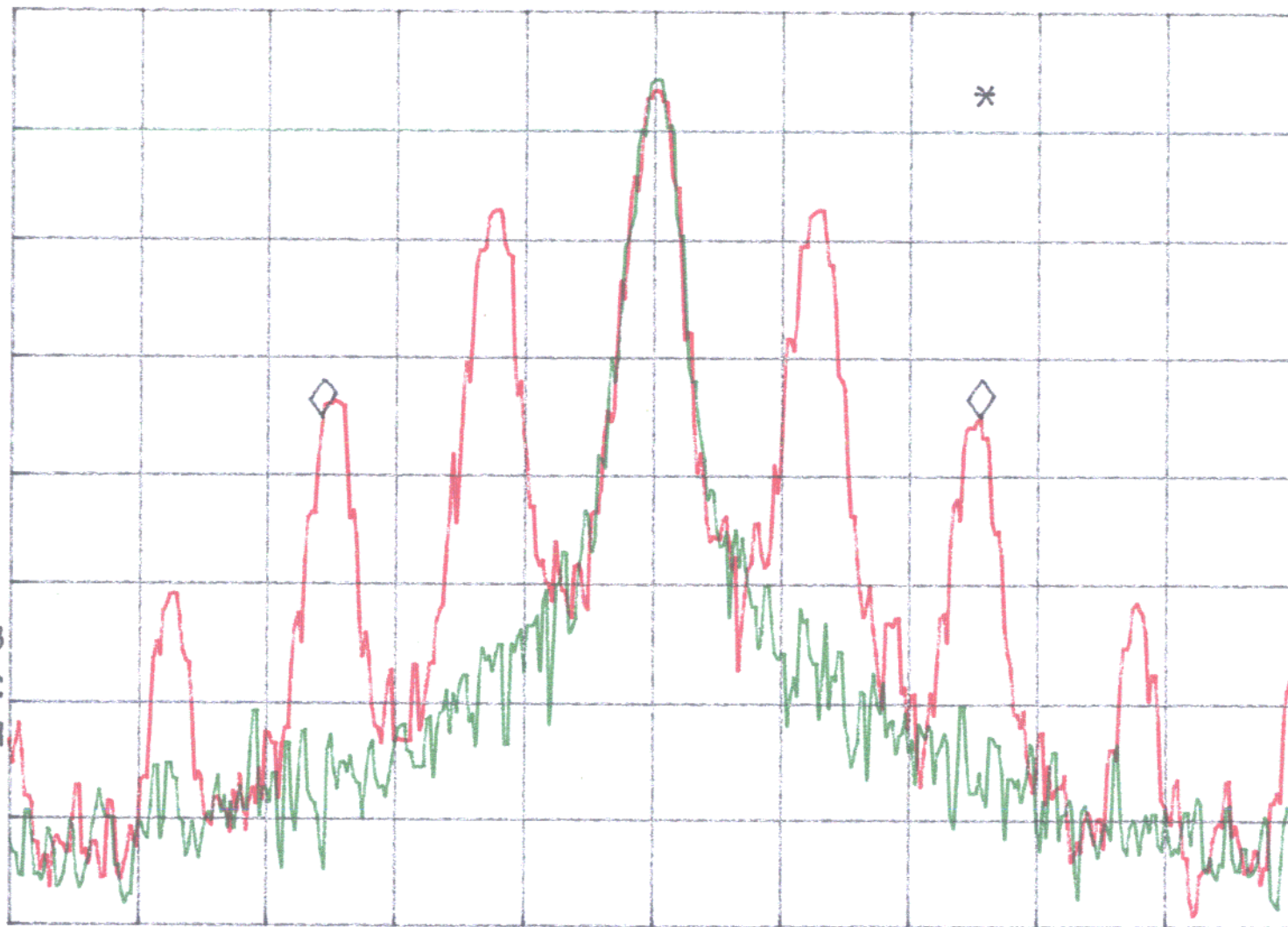
10

dB/

VA VB

SC FC

CORR



CENTER 462.63750 MHz

#RES BW 300 Hz

VBW 300 Hz

SPAN 20.00 kHz

SWP 1.00 sec

h

REF 97.0 dB $\mu$ V

AT 10 dB

MKR -10.20 kHz

.03 dB

PEAK

LOG

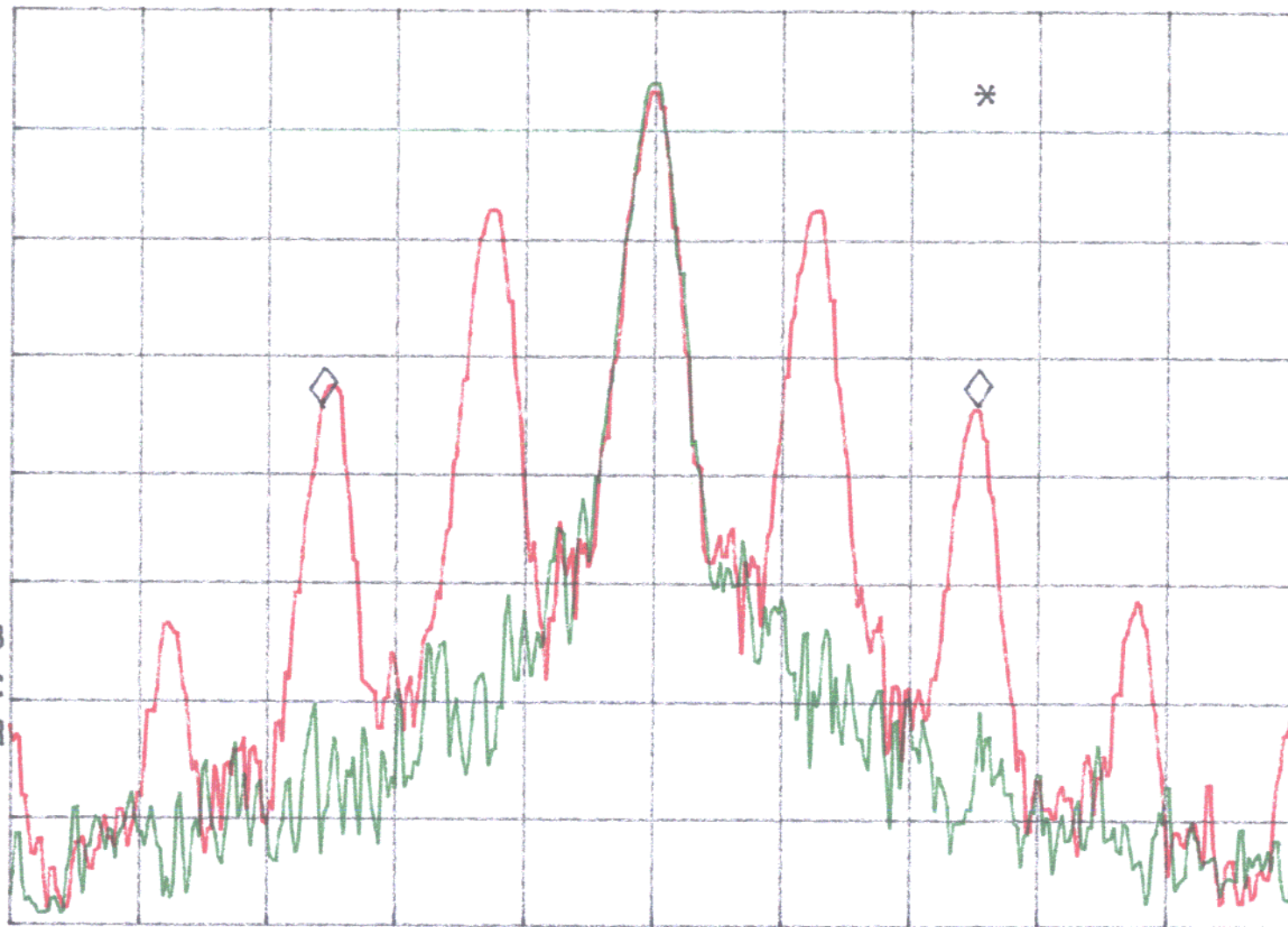
10

dB/

VA VB

SC FC

CORR



FRS 11

CENTER 467.63750 MHz

#RES BW 300 Hz

VBW 300 Hz

SPAN 20.00 kHz

SWP 1.00 sec

HP

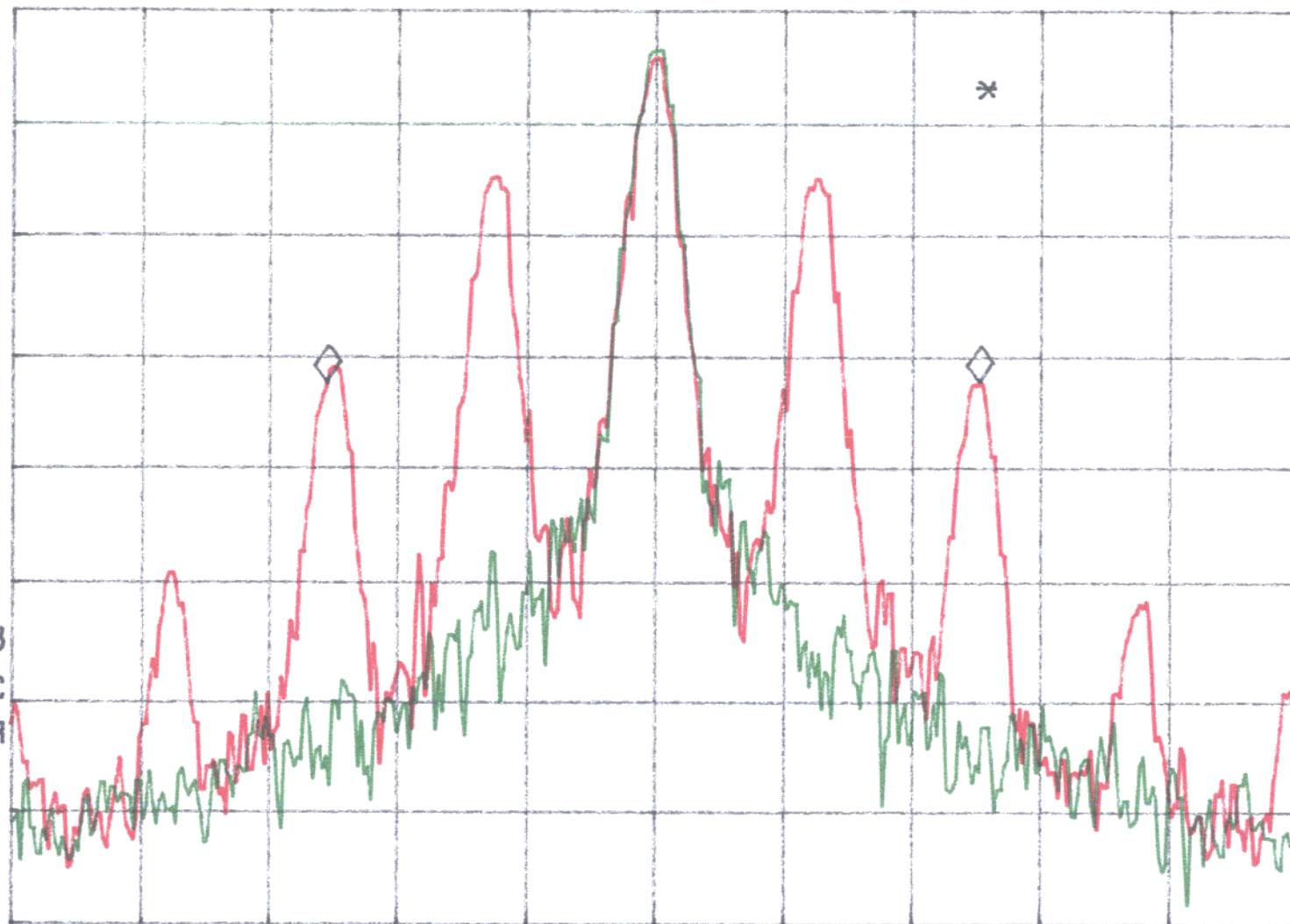
REF 97.0 dB $\mu$ V

AT 10 dB

MKR -10.15 kHz  
.00 dB

PEAK  
LOG  
10  
dB/

VA VB  
SC FC  
CORR



GMRS 4

CENTER 462.63750 MHz

#RES BW 300 Hz

VBW 300 Hz

SPAN 20.00 kHz

SWP 1.00 sec