



GRACE

WIRELESS INTERNET RADIO

IR608 ITC-IR1000W / ITC-IR1000B USER GUIDE

TABLE OF CONTENTS

Safety Warnings	4
Internet Radio Quickstart Guide	5
What you need before you can use your Internet radio	5
Controls.....	6
Steps for connecting your radio to your wireless network.....	8
Step 1 - Power up the radio	8
Step 2 - Scan for a wireless network connection	8
Step 3 - Connect to the wireless network.....	9
Choosing a radio station to listen to.....	11
Changing the volume	12
Storing a radio station in a preset.....	12
Playing a preset radio station	13
Requesting a station that is currently unavailable.....	13
Stations which enable you to choose what you listen to	13
Setting the clock.....	14
Setting the alarm	16
Media Player Quickstart Guide	18
Setup your Windows PC to allow GRACE to access your audio files via Windows Shares.....	18
Locate the shared audio files using the radio	19
Listening to a single shared track	20
Listening to a complete shared album	20
Queuing up tracks for playback later	20
Queuing up albums for playback later.....	21
Controlling playback.....	21
Browsing the list of tracks currently queued up for playback.....	21
Removing tracks from the queue.....	22
Playing tracks in random order	22
Playing tracks in the queue repeatedly.....	23
Set up a Windows PC to allow GRACE to access your audio files via a UPnP server	24
Locating and playing media files using the radio and UPnP	26
Browsing the list of tracks currently queued up for playback.....	27
Queuing up UPnP tracks for playback later	27
Queuing up albums for playback later.....	27

TABLE OF CONTENTS

Controlling playback.....	28
Removing tracks from the queue.....	28
Playing tracks in random order	29
Playing tracks in the queue repeatedly.....	29
Configure menu	30
Choosing the option you want from the Configure menu.....	30
<Network Config>.....	30
<Version>.....	30
<Upgrade Firmware>	31
<Language>	31
<Factory Reset>.....	31
<Register>	31
<Clock>	31
<Sleep Timer>	31
<Backlight>.....	32
Troubleshooting.....	33
Specifications.....	34
License Information and Warranty	34
Appendix	35
Step 1: Set Up Media Sharing in Windows Media Player 11	35
Step 2: Play Music on the Internet Radio.....	37
Contact	37

SAFETY WARNINGS

Please read before installation.

If this Internet radio has been moved from a cold place to a warm place, DO NOT plug it in for 2-3 hours (e.g. from a cold car boot to a warm room). There is a possibility that moisture may have condensed in the Internet radio, this can cause damage to your Internet radio. To avoid damage please unpack your Internet radio and allow it to stand at room temperature for 2-3 hours before use. This will help any moisture evaporate and prevent unnecessary damage to your Internet radio.

DO ensure that the mains plug is easily accessible.

COVERS - Do not remove any fixed covers as this may expose dangerous voltages.

WEATHER - It is advisable to unplug an external aerial during a thunderstorm.

VENTILATION - The ventilation holes on the casing of your Internet radio prevent it from over heating. Do not block or cover these holes, especially with cloth or paper.
Do allow a minimum distance of 5cm around the apparatus for sufficient ventilation.

DAMAGE - Never use your Internet radio if it is damaged in any way. Always place your Internet radio on a flat level surface avoiding anywhere which may be subject to strong vibration.

TEMPERATURE - Avoid extremes of temperature, either hot or cold, place your Internet radio well away from heat sources such as radiators or gas/electric fires.

DO NOT use this apparatus in tropical climates.

MOISTURE - Do not allow your Internet radio to be exposed to rain, moisture or dust. If any liquid is spilt into your Internet radio it can cause serious damage. If you spill any liquid into your Internet radio switch it off at the mains immediately. Contact your store immediately.

CAUTION - Do not open any covers and do not repair yourself. Qualified personnel must carry out repair work.

INTERNET RADIO QUICKSTART GUIDE

WHAT YOU NEED BEFORE YOU CAN USE YOUR INTERNET RADIO

Before you can use your Internet radio, you need the following:

- A broadband Internet connection.
- A wireless access point (Wi-Fi) connected to your broadband Internet, preferably via a router.
- If your wireless network is configured to use Wired Equivalent Privacy (WEP) or Wi-Fi Protected Access (WPA) data encryption then you need to know the WEP or WPA code so you can get the Internet radio to communicate with the network.
- If your wireless network is configured for trusted stations you will need to enter the radio's MAC address into your wireless access point. To find the radio's MAC address use menu items as follows: Configure > Network Config > View Config > MAC Address
- To enter the MAC address into your wireless access point, you must read the instructions supplied with the wireless access point.

The Internet radio should work anywhere within 300 feet (100 meters) of the wireless access point.

Before you continue, make sure that your wireless access point is powered up and connected to your broadband Internet. To get this part of the system working you must read the instructions supplied with the wireless access point.

FCC Information

This device complies with Part 15 of the FCC rules. Operation is subject to the following two conditions: 1) this device may not cause harmful interference, and 2) this device must accept any interference received, including interference that may cause undesired operation.

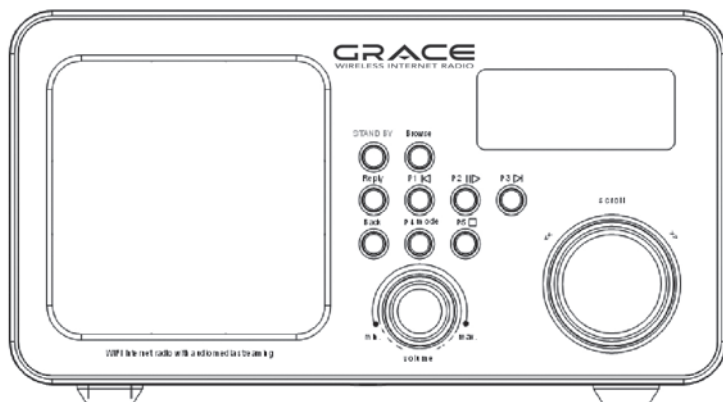
This equipment has been tested and found to comply with the limits for a Class B digital device, pursuant to Part 15 of the FCC rules. These limits are designed to provide reasonable protection against harmful interference in a residential installation. This equipment generates, uses and can radiate radio frequency energy and if not installed and used in accordance with the instructions, may cause harmful interference to radio communications. However, there is no guarantee that interference will not occur in a particular installation. If this equipment does cause harmful interference to radio or television reception, which can be determined by turning the equipment off and on, the user is encouraged to try correct the interference by one or more of the following measures:

- Reorient the receiving antenna.
- Increase the separation between the equipment and receiver.
- Connect the equipment into and outlet on a circuit different from that to which the receiver is connected.
- Consult the dealer or an experienced radio/TV technician for help.

Any special accessories needed for compliance must be specified in the instruction manual.


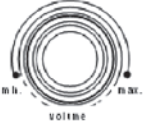
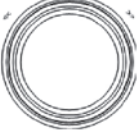
Changes or modifications not expressly approved by the party responsible for compliance could void the user's authority to operate the equipment.

CONTROLS



CONTROL	INTERNET RADIO MODE	MEDIA PLAYER MODE
STANDBY/ON ○	Press to turn on/off the Internet Radio	Press to turn on/off the Internet Radio
Browse ○	No function	Display Queue Information
Reply ○	No function at present	No function at present
P1 ○	Press and hold to save Preset station P1 Press to load Preset station P1	Previous Track
P2 ○	Press and hold to save Preset station P2 Press to load Preset station P2	Play/Pause
P3 ○	Press and hold to save Preset station P3 Press to load Preset station P3	Next Track
Back ○	Go back to previous menu page	Go back to previous menu page
P4 Mode ○	Press and hold to save Preset station P4 Press to load Preset station P4	Repeat On/Off Shuffle On/Off

CONTROLS (continued)

CONTROL	INTERNET RADIO MODE	MEDIA PLAYER MODE
<p>P5</p> 	<p>Press and hold to save Preset station P5 Press to load Preset station P5</p>	<p>Stop</p>
<p>Volume</p> 	<p>Increase volume by turning the knob clockwise Decrease volume by turning the knob counter clockwise</p>	<p>Increase volume by turning the knob clockwise Decrease volume by turning the knob counter clockwise</p>
<p>Scroll</p> 	<p>No function at present</p>	<p>No function at present</p>

STEPS FOR CONNECTING YOUR RADIO TO YOUR WIRELESS NETWORK

Step 1 - Power up the radio

First, connect to the AC Power. In use, the radio can be switched on or off with the **STANDBY/ON** button.

The display on the front of the radio will light up and say:

**Reciva Radio
ARM Powered**

After a few seconds, this will change to show:

**Initializing
Network**

After a few seconds, this will change to show:

**< Scan for networks >
Enter network
View Config
Edit Config**

Step 2 - Scan for a wireless network connection

When the display says < Scan for networks >, press the **SELECT** button. (Note: if you make a mistake at any point, press the **BACK** button to go back to the previous screen.)

The radio will now scan for all available wireless networks and will display:

Scanning

STEPS FOR CONNECTING YOUR RADIO TO YOUR WIRELESS NETWORK (continued)

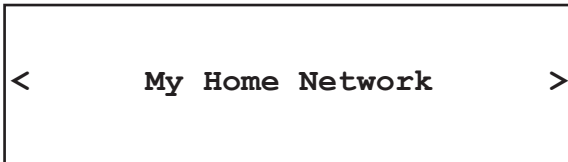
If it can't find one then the display will say:



**No networks
Found**

If this happens then you will have to get your wireless access point working - see the instructions supplied with it.

When the radio finds your wireless network, it displays the ESSID for the access point on the screen - this is a name that is allocated to the access point by the person who set up the network - for example:



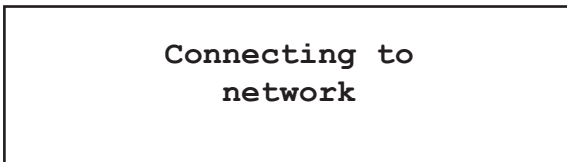
< My Home Network >

It is possible, and in some locations highly likely, that your radio will find more than one wireless access point, in which case you can choose which one you want to connect to. Turn the knob on the radio to see the ESSID for each access point the radio has found.

Step 3 - Connect to the wireless network

When the ESSID for the access point you want to connect to is displayed on the screen, press the **SELECT** button.

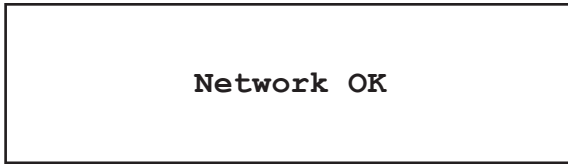
If your network is not configured to need an encryption code, the screen should say:



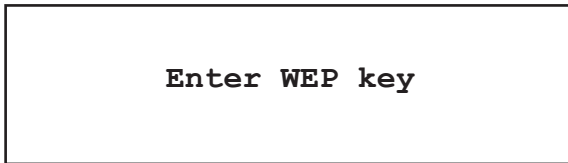
**Connecting to
network**

STEPS FOR CONNECTING YOUR RADIO TO YOUR WIRELESS NETWORK (continued)

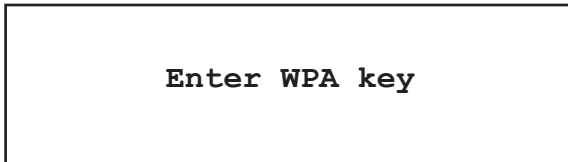
Then:



If the screen displays either:



Or:



Then the network is using one of the encryption systems: Wired Equivalent Privacy (WEP) or Wi-Fi Protected Access (WPA). You therefore need to enter the correct WEP or WPA code into the radio to get it to communicate with your network.

Only the person who set up the network in the first place knows this code; if that person is not you then you need to find out what it is.

After 3 seconds, the display goes into the code entry mode. To enter the code, use the knob to select each character of the code in turn, pressing the SELECT button after each character. Note that WEP and WPA codes are sensitive to upper and lower case characters so you must enter them exactly.

Use the BACK button to erase incorrect characters.

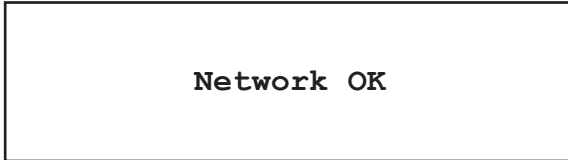
After the final character, use the knob to select the END character and press the SELECT button.

The radio should now be able to connect to the network.

If the display shows "Invalid key" or "Network Error", an incorrect password has probably been entered.

CHOOSING A RADIO STATION TO LISTEN TO

1. Press the **SELECT** button.
(Note: if you make a mistake at any point, press the **BACK** button to go back to the previous screen.)



2. If the screen does not say < Stations > as shown above, turn the knob until it does.
3. Press the **SELECT** button.
4. Turn the knob to choose from <Location> or <Genre>.

<Location> enables you to choose from the radio stations provided by any country which you choose from a list.

<Genre> enables you to choose radio stations according to their content, for example Classic Rock, Sport, News, etc.

5. Press the **SELECT** button to choose the option you want.

<Location>

1. Turn the knob until the display shows the region you want (or select 'All' to display all countries),
2. Press the **SELECT** button.
3. Turn the knob until the display shows the country you want.
4. Press the **SELECT** button.
5. Turn the knob until the display shows the station you want.
6. Press the **SELECT** button and wait until the radio connects to that station.

Note that some radio stations do not broadcast 24 hours per day, and some stations are not always on-line.

If this station has on-demand content (that is, it gives the option of listening to programmes which have already been broadcast), see "Stations which enable you to choose what you listen to".

CHOOSING A RADIO STATION TO LISTEN TO (continued)

<Genre>

1. Turn the knob until the display shows the type of content you want, then press the **SELECT** button.
2. Turn the knob until the display shows the station you want.
3. Press the **SELECT** button and wait until the radio connects to that station.

Note that some radio stations do not broadcast 24 hours per day, and some stations are not always on-line.

If this station has on-demand content (that is, it gives the option of listening to programmes which have already been broadcast), see “Stations which enable you to choose what you listen to”.

CHANGING THE VOLUME KNOB

When a radio station is playing, you can change the volume simply by turning the Volume knob.

STORING A RADIO STATION IN A PRESET

When a radio station is playing, hold down one of the preset buttons (1 to 5) until the screen says.

**Assigned to
Preset #**

Where # is the number of the button you held down.

PLAYING A PRESET RADIO STATION

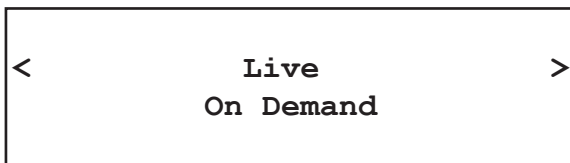
When a radio station is playing, briefly press the preset button (1 to 5) for the station you want. (Note, do not hold the button down - if you do then the station currently playing will overwrite the one stored in the preset; be careful.)

REQUESTING A STATION THAT IS CURRENTLY UNAVAILABLE

If you want to listen to a particular radio station which is currently not available online, you can visit the Reciva website at <http://www.reciva.com/> and put in a request to add the station to the list.

STATIONS WHICH ENABLE YOU TO CHOOSE WHAT YOU LISTEN TO

Some radio stations can provide a number of options associated with their station; for example, some stations enable you to listen to programmes that have already been broadcast. When you select a radio station that has this facility, the station does not start playing immediately, but instead the display shows:



1. Turn the knob to choose <Live> or <On Demand>, then press the **SELECT** button.

If you choose <Live> then the radio plays the current output from this station as normal.

If you choose <On Demand> then more screens are displayed where you choose what you want to listen to.

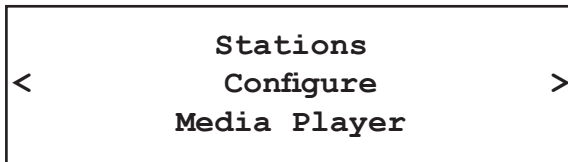
What is displayed will depend on the station you have chosen - the following steps are only a guide.

STATIONS WHICH ENABLE YOU TO CHOOSE WHAT YOU LISTEN TO (continued)

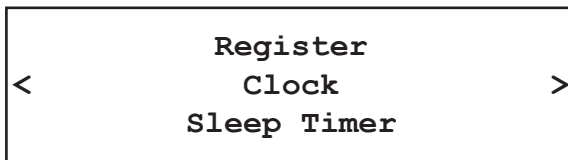
2. When you choose <On Demand>, the display shows the names of the programmes. Turn the knob to choose the program you want, then press the **SELECT** button.
3. When you have chosen the programme you want to listen to, either it will just start playing, or the display may show a list of days for you to choose from - use the knob to set the day the programme was broadcast, then press the **SELECT** button.
4. After you have chosen the day, you may be able to choose the Start Time. Set the Start Time using the knob and press the **SELECT** button.
5. Programmes which enable you to choose the time also enable you to fast-forward and rewind to the part you want while the radio is playing. The elapsed time is displayed. Using the Skip forward (P3) or Skip backward (P1). Skip forward or backward in 30 second intervals.

SETTING THE CLOCK

1. Press the **SELECT** button. (Note: if you make a mistake at any point, press the **BACK** button to go back to the previous screen.)
2. Turn the knob until the display says <Configure>.

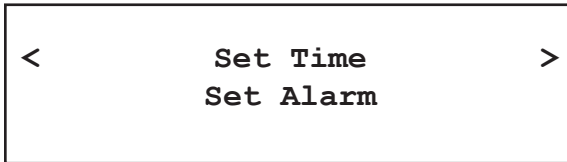


3. Press the **SELECT** button.
4. Turn the knob until the display says <Clock>.

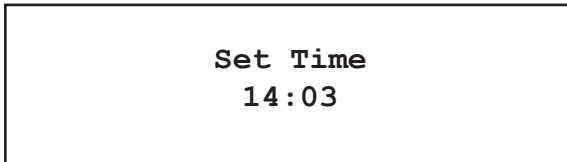


SETTING THE CLOCK (continued)

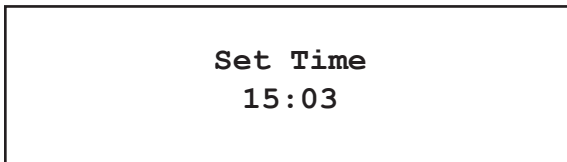
5. Turn the knob until the display says <Set Time>.



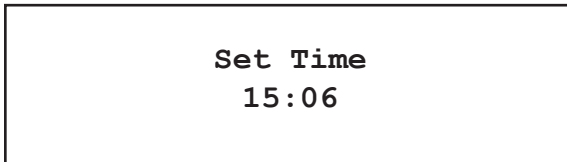
6. Press the **SELECT** button.



7. Turn the knob until the hour setting is correct, then press the **SELECT** button.



8. Turn the knob until the minute setting is correct, then press the **SELECT** button.



The display says Time Set with the new time shown beneath for 3 seconds, then returns to the radio station display.

SETTING THE ALARM

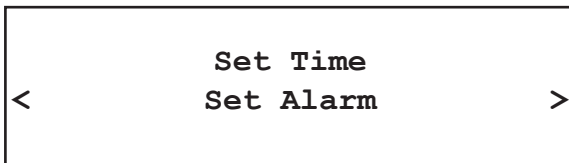
1. Press the SELECT button. (Note: if you make a mistake at any point, press the BACK button to go back to the previous screen.)
2. Turn the knob until the display says <Configure>.



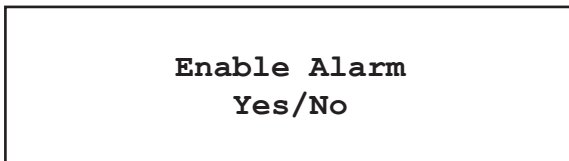
3. Press the SELECT button.
4. Turn the knob until the display says <Clock>.



5. Turn the knob until the display says <Set Alarm>.



6. Press the SELECT button.



SETTING THE ALARM (continued)

7. Turn the knob to swap between Yes and No and press the **SELECT** button. If you choose "No" then the alarm is turned off. The display says Alarm is Off for 3 seconds, then returns to the radio station display.

Alarm is off

8. If you choose "Yes" then the display enables you to set the time for the alarm.

Set Alarm
15:06

9. Turn the knob until the hour setting is correct, then press the **SELECT** button.

Set Alarm
07:06

10. Turn the knob until the minute setting is correct, then press the **SELECT** button.

Alarm Set:
07:45

The display says Alarm Set with the time of the alarm shown beneath for 3 seconds and then returns to the radio station display.

When in Standby, the Alarm time is shown next to the clock time with brackets.

Reciva Radio
11:58 (07:45)

Ensure the volume is set to the desired level.

MEDIA PLAYER QUICKSTART GUIDE

The Media Player allows you to play unprotected audio files (AAC, AIFF, MP3, RM, WAV, WMA) and play lists (M3U) stored on a networked PC. It has been verified to work on Windows 2000 and Windows XP.

SET UP YOUR WINDOWS PC TO ALLOW THE RADIO TO ACCESS YOUR AUDIO FILES VIA WINDOWS SHARES

1. When using Windows file sharing, your shared music folder must not be contained within "My Documents" or "My Music" since these folders are not shareable. For UPnP the location doesn't matter.
2. Please ensure that your PC is available on the network for your Internet radio, then, using Windows Explorer, locate the folder where your audio files are stored.
3. Right click on the folder.
4. Select 'Properties'.
5. Click on 'Sharing'.
6. Select 'Share this folder on the network' and 'Allow network users to change my files'.
7. Copy the files you wish to play from the radio to the shared folder. We suggest using the "Shared Music" folder.

LOCATE THE SHARED AUDIO FILES USING THE RADIO

1. Power up the radio.
2. Wait for 'Stations' to be displayed on the radio, or press the **BACK** button repeatedly until 'Stations' is displayed.
3. Turn the knob until the radio display shows 'Media Player'.
4. Press the **SELECT** button and turn the knob until 'Windows Shares' is displayed.
5. Press the **SELECT** button, turn the knob until 'Scan for PCs' is displayed and press **SELECT** again.
6. The radio will now display 'Finding PCs'. Once the radio has finished, turn the knob to highlight the correct PC.
7. Press the **SELECT** button. The radio will search for shared folders.
8. Turn the knob to highlight the correct shared folder and press **SELECT**.
9. The radio will display 'File Scan...' as it scans through the media files in the shared folder. Text on the bottom row of the display will change to indicate that the file scan is in progress. If you have a large number of audio files this could take several minutes to complete.
10. Once the radio has finished scanning, it will display 'By Album'. You can now browse through the scanned media files, which will now be organized 'By Album', 'By Artist' and 'Play lists' – if available.

Note: The first time the file scan is done a file called '.reciva_media_cache' is written to the folder where the audio files are stored. This is in order to speed up subsequent file scans.

LISTENING TO A SINGLE SHARED TRACK

1. Turn the knob until 'By Artist' is displayed.
2. Press the **SELECT** button.
3. Turn the knob until the required artist is displayed.
4. Press the **SELECT** button.
5. Turn the knob until the required album name is displayed.
6. Press the **SELECT** button. '[Add to Queue]' will be displayed.
7. Turn the knob until the required track is displayed.
8. Press the **SELECT** button. The track will begin playing.

LISTENING TO A SINGLE SHARED TRACK

1. Turn the knob until 'By Artist' is displayed.
2. Press the **SELECT** button.
3. Turn the knob until the required artist is displayed.
4. Press the **SELECT** button.
5. Turn the knob until the required album name is displayed.
6. Press the **SELECT** button. '[Add to Queue]' will be displayed.
7. Press the **SELECT** button. The album will begin playing.

ARRANGING (QUEUING UP) TRACKS FOR PLAYBACK LATER

1. Highlight the required track.
2. Press the **SELECT** button. 'Track Added To Queue' will be displayed.

ARRANGING (QUEUING UP) ALBUMS FOR PLAYBACK LATER

1. Highlight the required album.
2. Press the **SELECT** button.
3. Turn the knob until '[Add To Queue]' is displayed.
4. Press the **SELECT** button. 'Tracks Added to Queue' will be displayed.

CONTROLLING PLAYBACK

1. Use the **STOP** button to stop playback.
2. Use the **PLAY/PAUSE** button to either pause a currently playing track or to restart a currently paused track or to restart a stopped track.
3. Use the **SKIP TO PREVIOUS TRACK** button to start playback of the previous track in the queue.
4. Use the **SKIP TO NEXT TRACK** button to start playback of the next track in the queue.

BROWSING THE LIST OF TRACKS CURRENTLY ARRANGED (QUEUED UP) FOR PLAYBACK

1. Press the **BROWSE** button. The currently playing track name will be displayed.
2. Turn the knob to see which tracks are queued up for playback.
3. If you want to jump to a particular place in the queue then press the **SELECT** button when the required track is displayed.

REMOVING TRACKS FROM THE LIST (QUEUE)

1. Press the **BROWSE** button. The currently playing track name will be displayed.
2. Turn the knob to select the track you want to remove from the queue.
3. Press and hold the **STOP** button for 2 seconds and the radio will display: 'Delete Track?'
4. Turn the knob to highlight 'Yes' or 'No'.
5. Press **SELECT** to confirm whether you actually want to delete the track from the queue.
6. If 'Yes' was selected then 'Removed From Queue' will be displayed.
7. To remove all tracks from the queue, keep pressing **BACK** until the 'Media Player' menu item is selected, press **SELECT** and then turn the knob to select 'Clear Queue' and press **SELECT** again.

REMOVING TRACKS IN RANDOM ORDER

1. Select the individual tracks as described previously.
2. Navigate to top-level menu item 'Media Player' using the **SELECT** and **BACK** buttons.
3. Press the **SELECT** button.
4. Turn the knob until 'Playback Mode' is displayed.
5. Press the **SELECT** button.
6. Turn the knob until 'Shuffle' is displayed.
7. Press the **SELECT** button.
8. Turn the knob to select **YES/NO** to confirm that shuffle mode should be enabled.

PLAYING TRACKS IN THE LIST (QUEUE) REPEATEDLY

1. Select the individual tracks as described previously.
2. Navigate to top-level menu item 'Media Player' using the **SELECT** and **BACK** buttons.
3. Press the **SELECT** button.
4. Turn the knob until 'Playback Mode' is displayed.
5. Press the **SELECT** button.
6. Turn the knob until 'Repeat' is displayed.
7. Press the **SELECT** button.
8. Turn the knob to select **YES/NO** to confirm that repeat mode should be enabled.

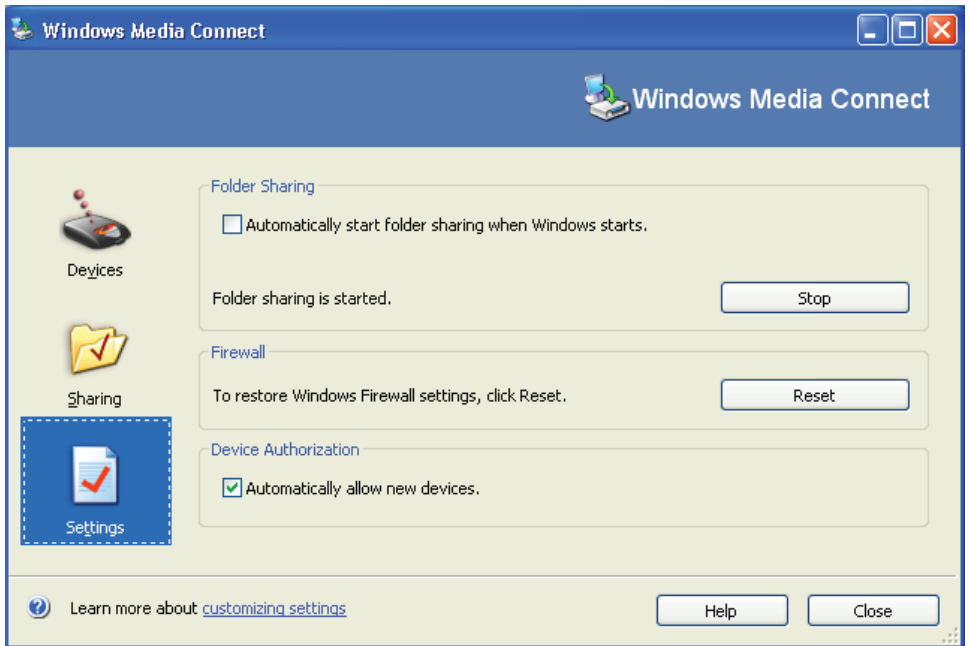
Note:

1. If the shared folders contain more songs than the Internet Radio memory limit, it will display "Too many files".
2. Repeatedly pressing button P4 will toggle Repeat and Shuffle modes

SET UP A WINDOWS PC TO ALLOW THE RADIO TO ACCESS YOUR AUDIO FILES VIA A UPNP SERVER

1. If your PC is running Microsoft Windows XP, then you can use Windows Media Connect to act as your UPnP (Universal Plug and Play) MediaServer 1.0 compliant server. Windows Media Connect may be downloaded from Microsoft's website (<http://www.microsoft.com/windows/windowsmedia/devices/wmconnect>) and installed by following the instructions detailed from its installation wizard.
2. You will first need to configure Windows Media Connect to allow certain devices to connect to it. This can be done by selecting 'Settings' from Windows Media Connect and checking the box for 'Automatically allow new devices', as shown below.

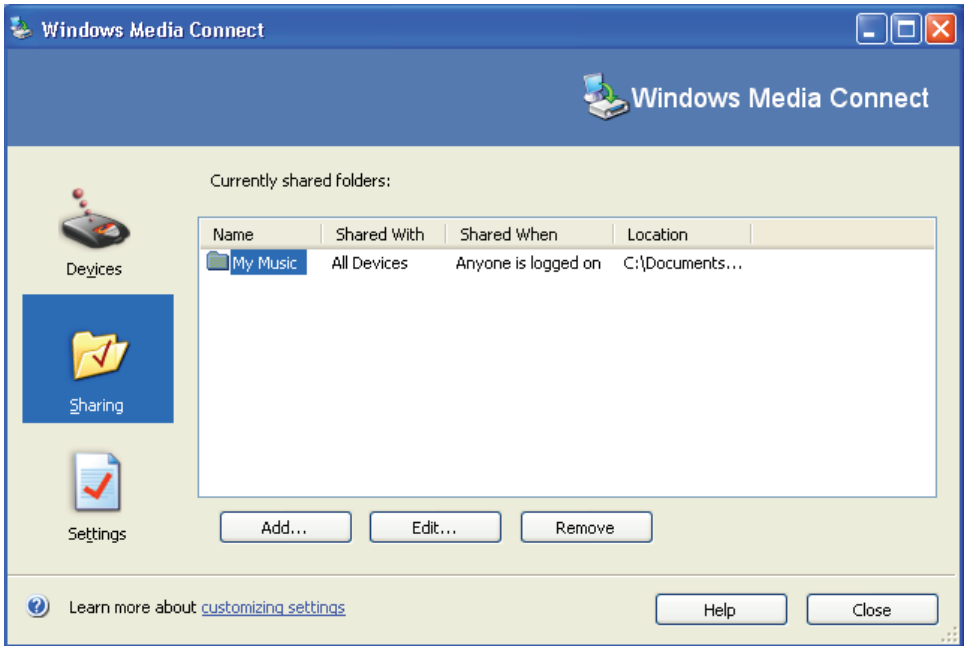
Settings for Windows Media Connect



SET UP A WINDOWS PC TO ALLOW THE RADIO TO ACCESS YOUR AUDIO FILES VIA A UPNP SERVER (continued)

3. Secondly, you will need to select which folders on your PC you want Windows Media Connect to share with your Internet radio. This can be done by selecting 'Sharing' then pressing the 'Add' button to add your folders as shown overleaf (Sharing Files With Windows Media Connect).
4. To enhance security with Windows Media Connect, you can disable the 'Automatically allow new devices' option and only allow certain devices to connect. You can select which devices you want to connect from the 'Devices' section by clicking on 'Deny' / 'Allow'.

Sharing Files With Windows Media Connect:



LOCATING AND PLAYING MEDIA FILES USING THE RADIO AND UPNP

1. Once the UPnP server is configured to share media files with the Internet radio, you can play the files by doing the following on the radio:
2. Keep pressing **BACK** to get to the radio's top-level menu and then turn the knob to select 'Media Player'.
3. Press **SELECT** and then turn the knob to highlight 'UPnP Servers'.
4. Press **SELECT** and the radio will scan for all available UPnP servers. Note, this may take a few seconds for the radio to complete its scan and before the scan has completed, the radio will display '[Empty]'. The radio will continue to display '[Empty]' if no UPnP servers are found.
5. After a successful scan, select your UPnP server, by rotating the knob if there is more than one UPnP server, and then press **SELECT**.
6. At this stage, your radio should be listed in Windows Media Connect and can be viewed from the 'Devices' pane; your radio will be displayed with its MAC address. To verify that the MAC address listed is your radio, select 'Configure' on your radio's menu and then turn the knob until 'Network Config' is displayed and press **SELECT**. Then turn the knob until 'View Config' is selected, press **SELECT** again and turn the knob until 'MAC Address' is selected to view your radio's MAC address.
7. The radio will now list the media categories available from the UPnP server, e.g. 'Music', 'Play lists' etc. Turn the knob to select which category you wish to browse, press **SELECT** and turn the knob to highlight a sub category and press **SELECT** again. For example, you could select 'Music' and then 'Album'.
8. Turn the knob to highlight the media files that you wish to play and press **SELECT**.
9. The radio will display '[Add to Queue]', press **SELECT** and the radio will add the tracks to its queue and begin playing them automatically.

Note: If you have a very large collection, "All Music" may not function, please use "Album" or "Artist" to browse.

BROWSING THE LIST OF TRACKS CURRENTLY ARRANGED (QUEUED UP) FOR PLAYBACK

1. Press the **BROWSE** button. The currently playing track name will be displayed.
2. Turn the knob to see which tracks are queued up for playback.
3. If you want to jump to a particular place in the queue then press the **SELECT** button when the required track is displayed.
4. It is important to note here that media files scanned from the radio's 'Windows Shares' function can also be added to the radio's queue.

ARRANGING (QUEUING UP) UPNP TRACKS FOR PLAYBACK LATER

1. Highlight the required track.
2. Press the **SELECT** button. 'Track Added To Queue' will be displayed.

ARRANGING (QUEUING UP) ALBUMS FOR PLAYBACK LATER

1. Highlight the required album.
2. Press the **SELECT** button.
3. Turn the knob until '[Add To Queue]' is displayed.
4. Press the **SELECT** button. 'Tracks Added to Queue' will be displayed.

CONTROLLING PLAYBACK

1. Use the **STOP** button to stop playback.
2. Use the **PLAY/PAUSE** button to either pause a currently playing track or to restart a currently paused track or to restart a stopped track.
3. Use the **SKIP TO PREVIOUS TRACK** button to start playback of the previous track in the queue.
4. Use the **SKIP TO NEXT TRACK** button to start playback of the next track in the queue.

REMOVING TRACKS FROM THE LIST (QUEUE)

1. Press the **BROWSE** button. The currently playing track name will be displayed.
2. Turn the knob to select the track you want to remove from the queue.
3. Press and hold the **STOP** button for 2 seconds.
4. Turn the knob to highlight 'Yes' or 'No'.
5. Press **SELECT** to confirm whether you actually want to delete the track from the queue.
6. If 'Yes' was selected then 'Removed From Queue' will be displayed.
7. To remove all tracks from the queue, keep pressing **BACK** until the 'Media Player' menu item is selected, press **SELECT** and then turn the knob to select 'Clear Queue' and press **SELECT** again.

PLAYING TRACKS IN RANDOM ORDER

1. Select the individual tracks as described previously.
2. Navigate to top-level menu item 'Media Player' using the **SELECT** and **BACK** buttons.
3. Press the **SELECT** button.
4. Turn the knob until 'Playback Mode' is displayed.
5. Press the **SELECT** button.
6. Turn the knob until 'Shuffle' is displayed.
7. Press the **SELECT** button.
8. Turn the knob to select **YES/NO** to confirm that shuffle mode should be enabled.

PLAYING TRACKS IN THE LIST (QUEUE) REPEATEDLY

1. Select the individual tracks as described previously.
2. Navigate to top-level menu item 'Media Player' using the **SELECT** and **BACK** buttons.
3. Press the **SELECT** button.
4. Turn the knob until 'Playback Mode' is displayed.
5. Press the **SELECT** button.
6. Turn the knob until 'Repeat' is displayed.
7. Press the **SELECT** button.
8. Turn the knob to select **YES/NO** to confirm that repeat mode should be enabled.

CONFIGURE MENU

The Media Player allows you to play unprotected audio files (AAC, AIFF, MP3, RM, WAV, WMA) and play lists (M3U) stored on a networked PC. It has been verified to work on Windows 2000 and Windows XP.

CHOOSING THE OPTION YOU WANT FROM THE CONFIGURE MENU

1. Press the SELECT button.

(Note: if you make a mistake at any point, press the BACK button to go back to the previous screen.)

2. Turn the knob until 'Configure' is displayed
3. Press the SELECT button.
4. Turn the knob until the display shows the option you want.
5. Press the SELECT button to choose the option shown on the display. The options are explained below.

<Network Config>

Enables you to scan again for connection to another wireless network, or to manually configure the network parameters. Use this if you take the Internet radio to another building where you want to use it

<Version>

Use this option to download new firmware for the radio from the Reciva portal on the Internet. If there is new firmware available, then the radio will prompt you if you want to download it or not. Note, at this stage, you can press the radio's **BACK** button to cancel the radio beginning a firmware upgrade. A Firmware upgrade may take several minutes, so do not switch off the power to the radio until the operation is complete otherwise the radio may become permanently damaged.

<Upgrade Firmware>

Use this option to download new firmware for the radio from the Reciva portal on the Internet. If there is new firmware available, then the radio will prompt you if you want to download it or not. Note, at this stage, you can press the radio's BACK button to cancel the radio beginning a firmware upgrade. A Firmware upgrade may take several minutes, so do not switch off the power to the radio until the operation is complete otherwise the radio may become permanently damaged.

<Language>

Allows you to change the display language.

<Factory Reset>

Puts all the settings back to their defaults as they were when they left the factory. If you perform a factory reset on your radio you will lose all your presets and your wireless network connection.

<Register>

This will display a key that can be used to register the radio on the Reciva Customer portal:
<http://www.reciva.com/>

<Clock>

Use this option to set the time, to set an alarm and to view the current alarm setting, see "Setting the alarm".

<Sleep Timer>

Selecting this option will enable the Internet radio to switch itself off after a set period.

1. After selecting the 'Sleep Timer' menu item, the radio will display: 'Sleep Timeout' and the sleep timer value in the form '00:00:00' (hours:minutes:seconds) in 30 second increments.
2. Rotate the knob to change to sleep timer value and then press **SELECT** to begin the sleep timer.
3. The radio will continue to play as normal, but it will go into standby mode after the sleep timer has expired.
4. To turn the radio back on again, simply press the **ON/OFF** button.

<Backlight>

Selecting this option will alter the Internet radio's backlight values.

1. After selecting the 'Backlight' menu item, the radio will display its list of three menu modes: 'Inactive', 'Active' and 'Standby'. These three states are explained below:
 - The radio gets into its 'inactive' state when there is no user activity for 30 seconds.
 - The 'active' state is when there is user activity.
 - 'Standby' is the state when the radio has been turned off.
2. Rotate the knob to highlight the desired menu mode and press **SELECT**.
3. The radio will now display the current backlight value for this menu mode. You can alter this value by rotating the knob to increase or decrease it.

TROUBLESHOOTING

If you experience any trouble with your wireless Internet radio, then you may find it useful to visit the help section on: webpage: <http://radio.reciva.com/>

If you have trouble connecting the radio to your wireless network, these steps may help to resolve the problem:

1. Confirm that a Wi-Fi connected PC can access the Internet (i.e. can browse the web) using the same network.
2. Check that a DHCP server is available, or that you have configured a static IP address on the radio. To configure the DHCP, you must read the instructions supplied with the wireless access point.
3. Check that your firewall is not blocking any outgoing ports. As a minimum the radio needs access to UDP and TCP ports 80, 554, 1755, 5000 and 7070. To configure the Access Port Control, you must read the instructions supplied with the wireless access point.
4. Check your access point does not restrict connections to particular MAC addresses. You can view the radio's MAC address using the menu item Configure > Network Config > View Config > MAC address.
5. If you have an encrypted network, check that you have entered the correct key or passphrase into the radio. Remember that text-format keys are case sensitive.

If your radio can connect to the network successfully, but is unable to play particular stations, it may be due to one of the following causes:

1. The station is not broadcasting at this time of the day (remember it may be located in a different time zone).
2. The station has reached the maximum allowed number of simultaneous listeners.
3. The station is not broadcasting anymore.
4. The link on the radio is out of date.
5. The Internet connection between the server (often located in a different country) and you is slow.



Try using a PC to play back the stream via the broadcaster's web site.

If you can play back the station with a PC, use the form at:

http://www.reciva.com/stations/add_station.asp to notify us so that we can change the station data that is used by the radio.

SPECIFICATIONS

- Power Requirements - Mains AC 120 volts, 60Hz only
- Power Consumption: 20W
- Speaker Output Level: 4.5W
- Headphone Speakers Level: 15mW

	This Product is intended for European and North American markets. The GRACE Wireless Internet Radio ITC-IR1000 is in compliance with the essential requirements and other relevant provisions of Directive 1999/5/EC
	FCC Compliance and Advisory Statement: This device complies with Part 15 of the FCC Rules. Operation is subject to the following two conditions: 1) this device may not cause harmful interference, and 2) this device must accept any interference received, including interference that may cause undesired operation

LICENSE INFORMATION AND WARRANTY

This product contains software licensed under version 2 of the GNU Public License and version 2.1 of the GNU Lesser Public License. The source code for this software is available from <http://www.reciva.com/gpl>

This product includes technology owned by Microsoft Corporation and under a license from Microsoft Licensing GP. Use or distribution of such technology outside of this product is prohibited without a license from Microsoft Corporation and/or Microsoft Licensing, GP as applicable.

Your Internet Radio is guaranteed against original defects in materials, manufacture and workmanship for one year from the date of purchase.

Under this warranty, repair of any defect or, at the company's discretion, replacement of the faulty component(s) without charge for parts or labor, is agreed. This warranty does not imply any acceptance by IntelliTouch retail or its agents for consequential loss or damage and specifically excludes fair wear and tear, accident, misuse of unauthorized modification.

This warranty is applicable in the United States only and does not in any way limit the customer's legal rights. Claims and enquiries under the warranty for IntelliTouch products purchased outside the USA should be addressed to the local importers or distributors. If you have reason to claim under the warranty please contact your dealer in the first instance. Please retain all original packaging materials for possible future use. We suggest that you complete details of purchase now and keep this information in a safe place for future reference.

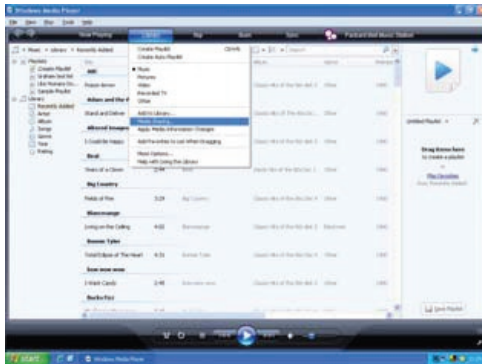
APPENDIX

STEP 1: SET UP MEDIA SHARING IN WINDOWS MEDIA PLAYER 11

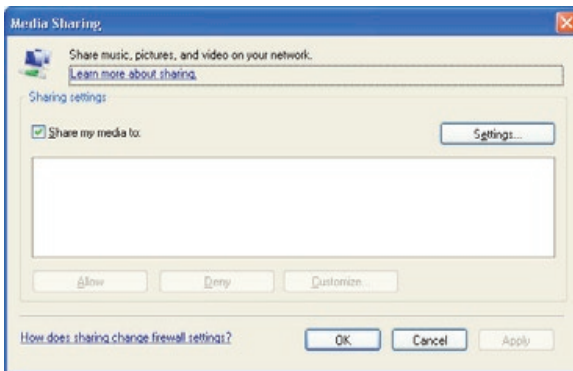
After you download and install Windows Media Player 11 for Windows XP and connect your radio to your network, you need to set up media sharing so that you can share music with your radio.

The following steps describe how to set up media sharing in Windows Media Player 11.

1. In Windows Media Player 11, click the small arrow below the Library tab, and then click Media Sharing.

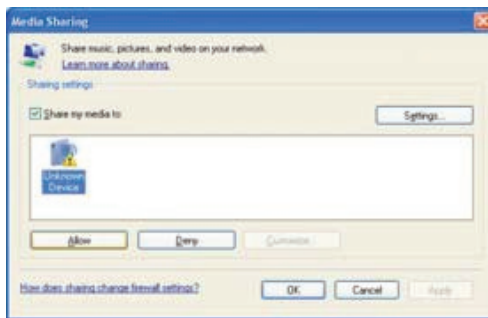


2. In the Media Sharing dialog box, select the Share my media check box.



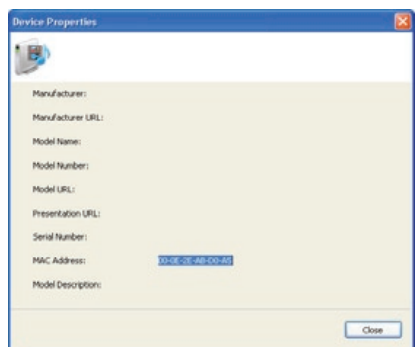
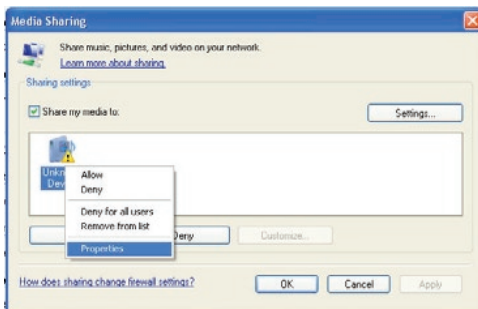
STEP 1: SET UP MEDIA SHARING IN WINDOWS MEDIA PLAYER 11 (continued)

3. In the list below the Share my media to: check box, click your Radio *, click Allow, the selected device will now show a green tick and then click OK.
- If your device does not appear in the list of devices perform the following steps;
 1. From the "Media Player" menu of your internet radio select "UPNP Servers"
 2. A list of available computers will appear.
 3. Select the required computer.



4. The display may show "Access Denied (801)"

5. Your device will now appear in the list. If you want to confirm this is your radio, right click the device and select Properties your radio's MAC address will be shown.



STEP 2: PLAY MUSIC ON THE INTERNET RADIO.

After installing and configuring your radio and Windows Media Player 11, you are now ready to play music wirelessly.

The following steps describe how to play music using the Radio.

1. Using the control, to select "UPNP Servers" from the "Media Player" menu.
2. Select the computer you wish to play the music files from.
3. Use the control to browse by All Music, Genre, All Artists, Contributing Artists, Album Artists, Composers, Albums, Play lists, Folders or Star Ratings and then press Select.
4. Select the music track/tracks you want to play, and then press the Select button. Enjoy the music!

GRACE

WIRELESS INTERNET RADIO

