

vitra.

eames radio
charles & ray eames
1946



COMPLIANCE

Vitra declares that this radio equipment is in compliance with Directive 2014/53/EU. The full text of which can be found online at the following address: http://ec.europa.eu/growth/sectors/electrical-engineering/red-directive_en

SAFETY WARNINGS

- This product is only serviceable in the UK
- Do not operate this radio near water
- Do not remove screws or casing parts
- Use only the power supply unit supplied
- Avoid small objects and liquids from entering the product
- Do not attempt to use this radio in temperatures outside the range of 0°C - 40°C.



TECHNICAL SUPPORT

Should you encounter problems using this product, please refer to the troubleshooting section on page 19 of this owner's guide.

Alternatively, call Revo technical support on :

UK 01555 666161
From outside the UK + 44 1555 666161

Alternatively, email support@revo.co.uk

For all the other inquiries please contact service@vitra.com or visit www.vitra.com/contact/contact-product-service



ENVIRONMENTAL INFO

PRODUCT DISPOSAL INSTRUCTIONS (WEEE DIRECTIVE)

The symbol shown here and on the product means that it is classed as Electrical or Electronic Equipment and should not be disposed with other household or commercial waste at the end of its working life.

The Waste of Electrical and Electronic Equipment (WEEE) Directive (2002/96/EC) has been put in place to recycle products using best available recovery and recycling techniques to minimise the impact on the environment, treat any hazardous substances and avoid the increasing landfill.

For more information please contact your local authority or the retailer where the product was purchased.

RoHS COMPLIANCE

This product has been designed to comply with international directives on the Restriction of Hazardous Substances (RoHS).

WARRANTY

Vitra GmbH warrants to the end user that this product will be free from defects in materials and workmanship in the course of normal use for a period of two years from the date of purchase.

This guarantee covers breakdowns due to manufacturing faults and does not apply in cases such as accidental damage, general wear and tear, user negligence, modification or repair not authorised by Vitra GmbH.

COPYRIGHTS AND ACKNOWLEDGEMENTS

Copyright 2018 Vitra GmbH. All rights reserved.

No part of this publication may be copied, distributed, transmitted or transcribed without the permission of Vitra GmbH.

VITRA and The Eames Radio are trademarks or registered trademarks of Vitra GmbH.

The Bluetooth® word mark and logos are registered trademarks owned by Bluetooth SIG, Inc. and any use of such marks is under license. Qualcomm is a trademark of Qualcomm Incorporated, registered in the United States and other countries, used with permission. aptX® is a trademark of Qualcomm Technologies International Ltd, registered in the United States and other countries, used with permission.

DISCLAIMER

Vitra GmbH makes no representation or warranties with respect to the content of this publication, and specifically disclaims any implied warranties of merchantability or fitness for any particular purpose. Further, Vitra GmbH reserves the right to make changes to this publication from time to time, without notification to any person or organisation.

Vitra GmbH, Charles-Eames-Strasse 2, 79576 Weil am Rhein, Germany.
www.vitra.com

CONTENTS

02	Technical Support
02	Environmental Info
02	Warranty
02	Copyrights and Acknowledgements
02	Disclaimer
03	FCC Statements
03	FCC Notices
03	Welcome / Unpacking
04	Anatomy
05	Power Supply
05	Set-Up
06 - 07	DAB Radio Mode
08 - 09	DAB Mode Menu Options
10 - 11	FM Radio Mode / AUX IN Mode
12 - 13	Bluetooth Mode
14 - 15	Alarm Clock
16 - 18	Miscellaneous Settings
19	Troubleshooting

FCC STATEMENTS

This device complies with part 15 of the FCC Rules. Operation is subject to the following two conditions: (1) This device may not cause harmful interference, and (2) this device must accept any interference received, including interference that may cause undesired operation.

This equipment complies with FCC radiation exposure limits set forth for an uncontrolled environment. This equipment should be installed and operated with minimum distance 20cm between the radiator & your body.

FCC NOTICES

This equipment has been tested and found to comply with the limits for a Class B digital device, pursuant to Part 15 of the FCC Rules. These limits are designed to provide reasonable protection against harmful interference in a residential installation. This equipment generates, uses and can radiate radio frequency energy and, if not installed and used in accordance with the instructions, may cause harmful interference to radio communications. However, there is no guarantee that interference will not occur in a particular installation.

If this equipment does cause harmful interference to radio or television reception, which can be determined by turning the equipment off and on, the user is encouraged to try to correct the interference by one or more of the following measures:

- Reorient or relocate the receiving antenna.
- Increase the separation between the equipment and receiver.
- Connect the equipment into an outlet on a circuit different from that to which the receiver is connected.
- Consult the dealer or an experienced radio/TV technician for help.

The normal function of the product may be disturbed by strong Electro-Magnetic Interference. If so, simply reset the product to resume normal operation by following the instruction manual. In case the function could not resume, please use the product in other location. Changes or modifications to this unit not expressly approved by the party responsible for compliance could void the user's authority to operate the equipment.

WELCOME

Thank you for purchasing The Eames Radio.

This guide has been designed to quickly get you up-and-running with your radio, offer guidance on the more complex features of this product and provide information on safety, warranty details and troubleshooting.

UNPACKING YOUR RADIO

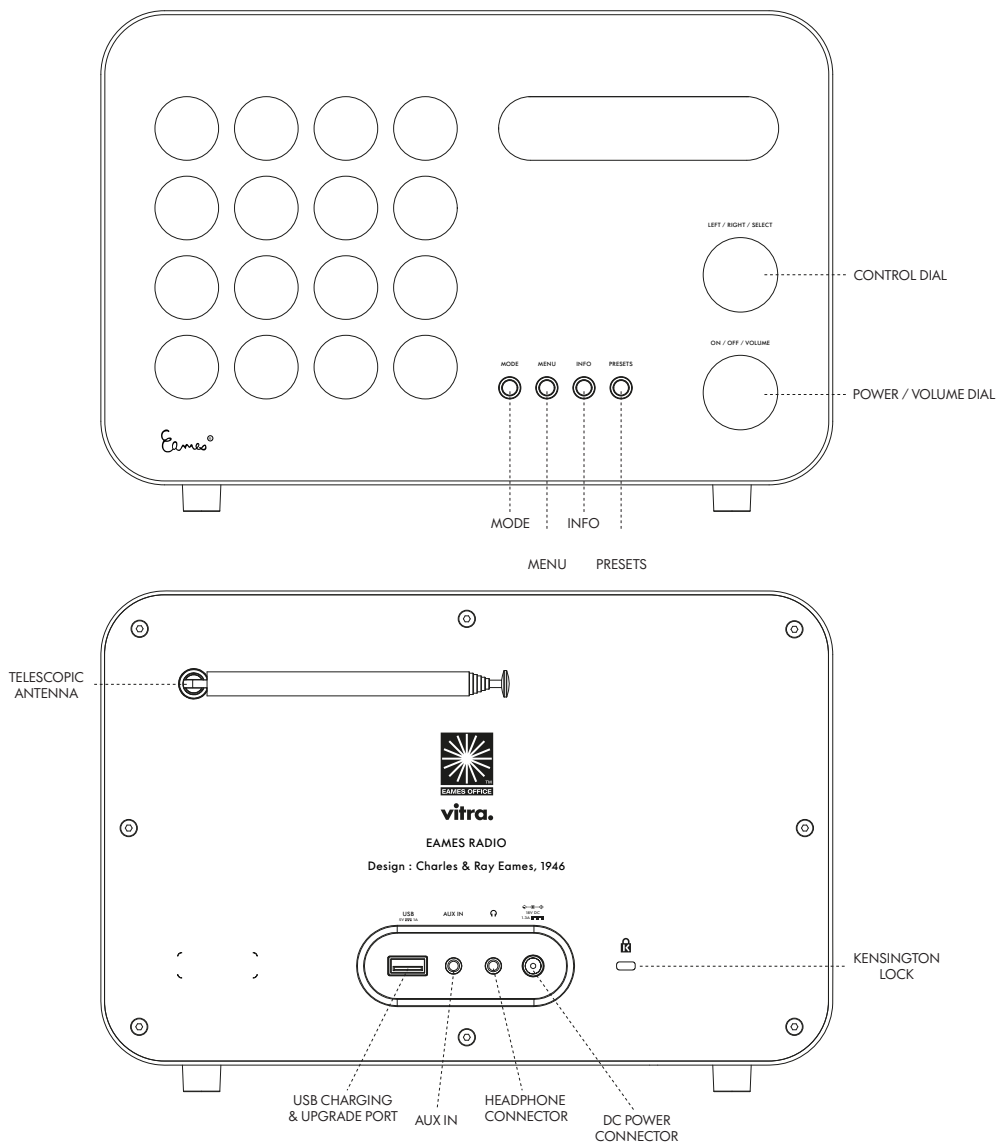
The Eames Radio box should include the following items:

- The Eames Radio
- Power supply with adaptors for UK, Euro and USA
- Owner's guide

Should any item be missing or damaged, please contact your point of purchase or emailservice@vitra.com

NOTE: All packaging should be retained for possible future use, it is the safest way to transport your radio should it be necessary.

ANATOMY OF THE EAMES RADIO



POWER SUPPLY (PSU)

The Eames Radio is supplied with a multi-region power supply, meaning that it can be operated in a number of countries around the world.

Simply choose the correct adaptor for your country from the selection supplied and attach to the PSU as per the illustration opposite.



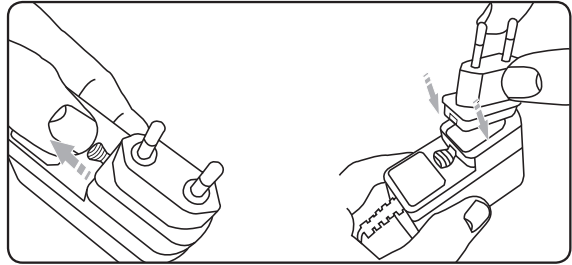
UK



EURO

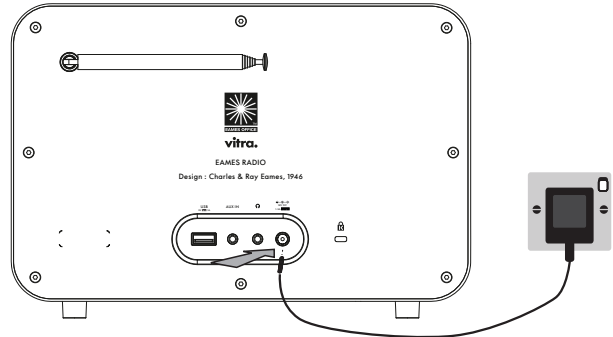
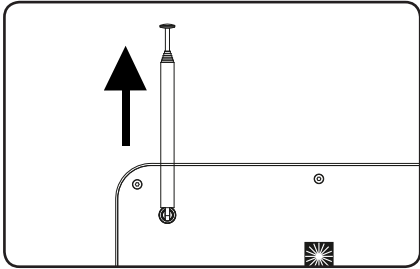


USA



INITIAL SET-UP

- 1 Please fully **extend** the antenna before powering the Eames Radio for the first time.
- 2 Using the PSU supplied, **connect** one end to the DC power socket found on the rear of your radio, then **plug** the opposite end into the mains socket on the wall. The Eames Radio will now automatically perform a scan to see what DAB stations are being broadcast in your area.



DAB RADIO MODE

GETTING READY FOR DAB OPERATION

Please ensure that the radio's antenna is extended before operation in DAB Mode.

When you switch on the Eames Radio for the first time, it will automatically perform a scan to see what stations are being broadcast in your area, before storing them alphabetically in the radio's memory.

Scanning... 52



To enter DAB MODE, **press** the MENU button until the DAB MODE intro screen is displayed.

DAB

It may be necessary to perform a FULL SCAN from time to time, in order to update your radio's station list. This may be required for any one of the following reasons:

1. Station availability can change from time to time as new stations appear, or existing stations cease broadcasting.
2. Reception was poor during the initial automatic scan, if for example the radio's antenna was not completely extended, it may be that the station list is incomplete or even empty.
3. You have poor reception on some of the stations (resulting in broken or poor quality audio), you may wish to list only stations that have a strong signal strength.

To initiate a scan, **press** the MENU button then **select** FULL SCAN from the menu list.

When the scan is complete, your radio will list all available stations.

To remove stations that are listed but unavailable, **press** MENU then choose PRUNE. When asked whether you wish to "PRUNE?", **select** YES.

Prune?
YES <NO>

DAB RADIO MODE

SELECTING A STATION

To access your radio's station list, **turn** the CONTROL dial to scroll through the available stations alphabetically, then **press** the dial to select your station choice.

Station list
<BBC R6M >

FAVOURITE STATION PRESETS

The Eames Radio allows you to store your 10 favourite stations as presets, accessible via the PRESETS button on the front of the radio.

To save the station you are currently listening to as a preset, simply **press** the PRESETS button then use the CONTROL dial to find an unused (empty) location. Now **press** the dial to store the station.

Preset Recall
<1: (Empty) >

To listen to a stored favourite station **press** the PRESETS button then use the CONTROL dial to scroll through the options before **pressing** the dial to select the desired station.


Preset Recall
<1: BBC R6M >

If you want to change a particular preset in the future, repeat the process and the previously stored preset will be automatically overwritten.

DAB MODE MENU OPTIONS

STATION INFO

In DAB MODE, the Eames Radio is capable of displaying various pieces of information on its screen. By **pressing** the INFO button, you can sequentially cycle through the following types of information.

STANDARD DAB SCREEN	Shows scrolling text info from broadcaster	BBC R6M Now Playing: My
SIGNAL STRENGTH	Indicates the DAB broadcast signal strength	BBC R6M 
PROGRAMME TYPE	For example News, Rock Music, Classical etc.	BBC R6M Rock Music
MULTIPLEX	Multiplex owner	BBC R6M BBC National DAB
FREQUENCY	Station frequency	BBC R6M 12B 225.648MHz
SIGNAL QUALITY	Station's current signal quality	BBC R6M Signal Level: 91
BIT RATE AND CODEC	Audio format, sample rate, mono or stereo	BBC R6M 128kbps / DAB
TIME	Current time	BBC R6M 12: 43: 15
DATE	Today's date	BBC R6M 13-6-2018

DAB MODE MENU OPTIONS

DYNAMIC RANGE COMPRESSION (DRC)

If you are listening to music with a high dynamic range in a noisy environment (for example, classical music while cooking), you may wish to compress the audio's dynamic range. This has the effect of making quiet sounds louder, and loud sounds quieter.

To change the DRC setting, **press** MENU then choose the DRC option, before **selecting** OFF, HIGH or LOW.

DAB
<DRC >

DAB
<DRC off >

DAB
<DRC high >

FM RADIO MODE

FM OPERATION

Please ensure that the radio's antenna is extended before operation in FM MODE.

To enter FM MODE, **press** the MODE button until the FM MODE intro screen is displayed.

FM

If this is the first time that the radio has been used in FM MODE, it will start at the beginning of the frequency range (87.50MHz), otherwise the radio will default to the station that was being listened to last.

87.50MHz
[No RadioText]

Pressing the CONTROL dial will start the radio scanning for the next available station. The Eames Radio will automatically stop scanning when a station is found.

99.50MHz
BBC Radio 1

To fine tune, turn the CONTROL dial to incrementally change the frequency.

When on an FM station that has a strong signal and is broadcasting RDS information, the radio will display the station name and other pieces of text information on-screen.

FAVOURITE STATION PRESETS

The Eames Radio allows you to store your 10 favourite stations as presets, accessible via the PRESETS button on the front of the radio.

To save the station you are currently listening to as a preset, simply **press** the PRESETS button then use the CONTROL dial to find an unused (empty) location. Now **press** the dial to store the station.

Preset Recall
<1: (Empty) >

To listen to a stored favourite station **press** the PRESETS button then use the CONTROL dial to scroll through the options before **pressing** the dial to select the desired station.

Preset Recall
<1: BBC R1 >

If you want to change a particular preset in the future, repeat the process and the previously stored preset will be automatically overwritten.

FM RADIO MODE

FM SETTINGS

Press the MENU button to access the FM MODE MENU. From here you can set some FM preferences such as SCAN SETTING and AUDIO SETTING.

FM

SCAN SETTING allows you to decide whether the radio should stop scanning only when it finds a station with a strong signal.

FM
<Scan setting >

AUDIO SETTING gives you the option of listening to a station in mono, should the signal strength not be sufficiently strong to allow stereo reception.

FM
<Audio setting >

AUXILIARY INPUT MODE

AUXILIARY INPUT MODE allows you to play audio from an external source through your radio.

To do so, connect your external audio source to the 3.5mm AUX IN connector on the rear of the Eames Radio.

Turn the volume down on both the Eames Radio and, if adjustable, the external device.

Now **press** MODE until the AUXILIARY INPUT MODE intro screen is displayed.

Auxiliary Input

Auxiliary Input
12: 50: 32

Adjust the volume of the Eames Radio and, if necessary, the external audio device as required.

BLUETOOTH MODE

Wirelessly stream music from your Bluetooth smartphone, tablet, laptop or other Bluetooth enabled device directly to the Eames Radio.

PAIRING WITH BLUETOOTH DEVICES

'Pairing' occurs when two Bluetooth devices talk to each other and establish a connection. This connection is stored in the memory of both devices, meaning that once you 'pair' a particular device with the Eames Radio, you won't have to repeat the pairing process again.

HOW TO PAIR A BLUETOOTH DEVICE WITH THE EAMES RADIO

To enter Bluetooth mode, **press** the MENU button until the BLUETOOTH MODE intro screen is displayed. The Eames Radio will now enter pairing mode, and will display 'Bluetooth Discoverable' on screen.

Bluetooth

On your Bluetooth device, ensure that Bluetooth is enabled then initiate a 'Search' for a new device. When the search process has been completed, your device will list all the available Bluetooth devices in your close proximity.

**Bluetooth
Discoverable**

Select EAMES RADIO from the list.

Your Bluetooth device will confirm when pairing has been completed and will now display "Bluetooth Connected" on screen.

**Bluetooth
Connected**

PASSKEY

During the pairing process some Bluetooth devices may prompt you to enter a Passkey. Should your device require a Passkey, enter 0000.

Should you experience problems when pairing your device with the Eames Radio, please see the Bluetooth Troubleshooting section on page 19.

BLUETOOTH SPECIFICATION

Bluetooth operation 2.402 - 2.480GHz, < 2dBm

BLUETOOTH MODE

STREAMING MUSIC

Music is selected and controlled from the source device (smartphone, tablet, laptop etc.).

Please note that the playback volume level is independently controlled from both the Eames Radio and the source device.

MANAGEMENT OF MULTIPLE BLUETOOTH DEVICES

If you have paired only one Bluetooth device, on entering BLUETOOTH MODE the Eames Radio will automatically seek to connect with this device.

Should you wish to pair another device, **press** MENU then **select** PAIR. The Eames Radio will now disconnect its current Bluetooth device and enter pairing mode again. This will allow the connection of another Bluetooth device. To do so simply repeat the pairing procedure from page 12



Station list
<Pair >

The Eames Radio will remember up to 8 individual Bluetooth devices. When you reach the point of having a 9th device that you wish to pair, the Eames Radio will pair with the 9th device and automatically erase the oldest-paired device from its memory.

You can continue to pair new devices and your radio will always remember the previous 8 devices it has paired with.

Qualcomm® aptX™

The Eames Radio is equipped with Qualcomm® aptX™ technology, meaning that when it is used in conjunction with a device that also supports aptX™, audio will be of near CD quality rather than the lower MP3 quality of a standard Bluetooth stream.

ALARM CLOCK

SETTING AN ALARM

The Eames Radio is able to store two individual alarm settings. **Press** the MENU button and turn the CONTROL dial until ALARM is displayed, now select which of the Alarms (Alarm 1 or Alarm 2) you would like to modify or enable by **pressing** the CONTROL dial. Now **turn** the Alarm Wizard ON and follow the on-screen prompts.

DAB
<Alarm >

Alarm 1 Setup

Use the CONTROL dial to set each preference for your alarm, (listed below), **pressing** the dial to move onto the next option.

- Time
- Duration of Alarm
- Source: Buzzer, DAB or FM
- Frequency: Daily, Once, Weekends or Weekdays.
- Volume Level: (turn the CONTROL dial to set volume)
- Alarm ON or Alarm OFF, (pressing **select** will now save your preferences)

STOPPING AN ALARM

When an alarm is sounding, **pressing** the CONTROL dial will STOP the alarm.

Alarm 1

Alarm Off

PLEASE NOTE : To wake you gently, the EAMES Radio will slowly increase the volume of the alarm from silent to your preset volume level over a 30 second period.

ALARM CLOCK

SNOOZE FUNCTION

The Eames Radio includes a SNOOZE function that allows you to temporarily silence the alarm for a period of up to 30 minutes.

The SNOOZE duration can only be set when your radio is actually in the process of alarming. At this point simply **press** the CONTROL dial and **turn** the dial through a range of pre-set SNOOZE durations, either 5, 10, 15 or 30 minutes, then **press** the dial to select.

**Snooze
15 minutes**

When SNOOZE is activated, the Eames radio will return to standby for the selected period of time.

SLEEP FUNCTION

By using the SLEEP function, you can set your radio to automatically switch itself into STANDBY mode.

To activate the Sleep function **press** MENU then **turn** the CONTROL dial until SLEEP is displayed, now **press** the dial to select. You can now set the SLEEP timer to any one of the following pre-defined durations; 15, 30, 45, 60 or 90 minutes.

DAB
<Sleep >

**Set sleep time
15 minutes**

When you have selected a sleep duration, your radio will return to the MODE you were previously in.

MISCELLANEOUS SETTINGS

EQUALISER

The Eames Radio provides you with a significant degree of control over its standard (factory default) audio settings. This includes control over BASS and TREBLE and the ability to use one of five preset EQ settings. It is also possible to create your own personalised EQ setting - known as "My EQ".

To adjust the audio settings, **press** the MENU button then **select** EQUALISER from the menu options.

DAB
<Equaliser >

Your radio will display a list of seven EQ options: My EQ, Normal (the factory default EQ setting), Classic, Jazz, Pop, Rock and Speech.

Equaliser
<Rock >

Simply select your preference from the list and your radio will store this setting in its memory. For reference, the currently selected EQ setting is highlighted by an asterisk (*) displayed top right on radio's display.

Equaliser *
<Rock >

To configure your own personal EQ setting **select** My EQ and then proceed to adjust the BASS and TREBLE values using the CONTROL dial. Your personalised EQ can now be selected by choosing My EQ from the EQUALISER menu.

Bass
<+1 >

Equaliser
<My EQ... >

TIME

Found by **pressing** the MENU button and selecting TIME. This menu offers you the option of changing a number of time/date related settings. The TIME menu has four listings as follows:

DAB
<Time >

SET TIME / DATE : Allows you to manually set the time/date.

AUTO UPDATE : Choose from three different automatic setting options.

SET 12/24Hr : Choose whether you would like to use 12hr or 24hr formats.

SET DATE FORMAT : Select how you want the date to be displayed

MISCELLANEOUS SETTINGS

AUTO UPDATE

Update from ANY : Automatically takes time/date from DAB or FM signals. The Eames Radio needs to have been operated in DAB or FM MODE (and have received a signal) before this information can be extracted.

UPDATE FROM DAB : Forces the radio to take the time/date from the DAB signal.

UPDATE FROM FM : Forces the radio to take the time/date from an FM signal.

BRIGHTNESS

The Eames Radio allows a degree of control over the brightness of its display, meaning that both its STANDBY and ON brightness levels can be independently set to HIGH, MEDIUM or LOW levels.

To change the brightness settings **press** MENU then **select** BRIGHTNESS from the menu list. You will now be able to modify the default brightness level settings for the two modes of operation - STANDBY and ON. Select the mode you'd like to change from these two options, then choose your desired brightness level. Your chosen setting will be held in memory indefinitely, but can be changed at any time.

Brightness
 <Standby Level >

Brightness
 <On Level >

The TIMEOUT setting enables control of the length of time it takes for the Eames Radio to transition from its ON brightness level, to the brightness level when the radio is in STANDBY. For example, this allows the ON brightness level to be set to HIGH, and the STANDBY level to LOW, meaning when the radio is turned off and it goes into STANDBY, the brightness can be set to reduce over a 30 second period down to a low level suitable for bedside/night time use. Pressing any button or moving either dial will temporarily return the display brightness to its ON brightness level, allowing the time to briefly become visible again.

Timeout
 <20 sec >

LANGUAGE

The default language on your radio is English, though 3 other languages are supported as follows: French German Italian

To change the current language setting **press** MENU then **select** LANGUAGE from the MENU, options, then **select** your choice.

DAB
 <Language >

Language
 <English >

MISCELLANEOUS SETTINGS

FACTORY RESET

By selecting FACTORY RESET from the menu, you can reset your radio to its default factory values, erasing any personal settings that may have been configured (time/date and presets will be erased).

To perform a factory reset, **press** MENU then **select** FACTORY RESET. Now answer YES.

Factory Reset?
Yes <No>

SOFTWARE UPGRADE

The SOFTWARE UPGRADE option should only be used when you are asked to do so by Revo Technologies' technical support department.

If you are required to do this, further instructions will be issue at that time.

SW Upgrade?
Yes <No>

SW VERSION

When dealing with a technical support issue, you may be asked for the SOFTWARE VERSION of your radio. This information can be found under the SW VERSION menu.

Press MENU then **select** SW VERSION.

DAB
<SW version >

SW version
dab-mmi-FS298432

TROUBLESHOOTING

PROBLEM	CAUSE	SOLUTIONS
FM: HISS DAB: Inconsistent audio DAB: Audio cuts-out DAB: 'No stations available'	Low signal strength.	Check/move antenna. Move radio to another location. Rescan local (high-strength) stations only. For DAB, check local station availability/coverage.
Bluetooth Mode: Can't connect to a paired device		Select PAIR from the Bluetooth menu on the radio, and delete the EAMES RADIO profile from your Bluetooth device, then re-pair the devices as normal.
Bluetooth Mode: Poor audio quality	Your Bluetooth device may be out of range. Electromagnetic interference.	Move your Bluetooth device closer to your Eames Radio. Move your Bluetooth device away from other sources of interference such as other Bluetooth devices, wireless routers etc.

TECHNICAL SUPPORT

TEL +44 (0) 1555 666 161

EMAIL support@revo.co.uk

WEB www.revo.co.uk/support