

POWER AMPLIFIER HEATSINK ASSEMBLY

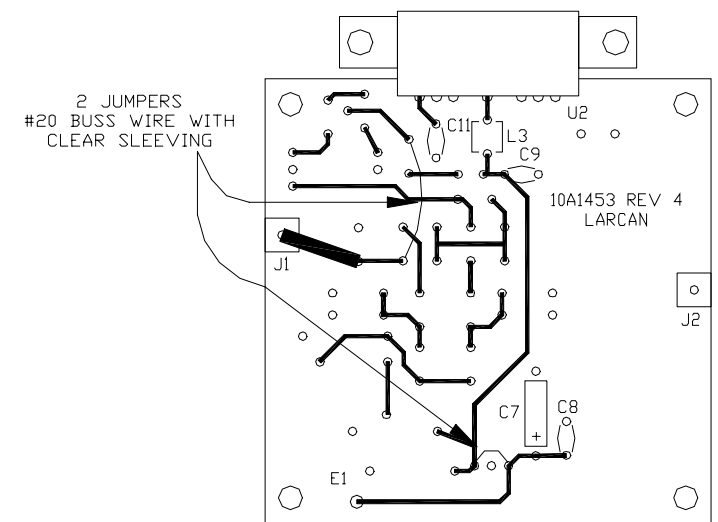


Figure 2 10A1453 High Band Preamplifier Assembly sht10 Rev

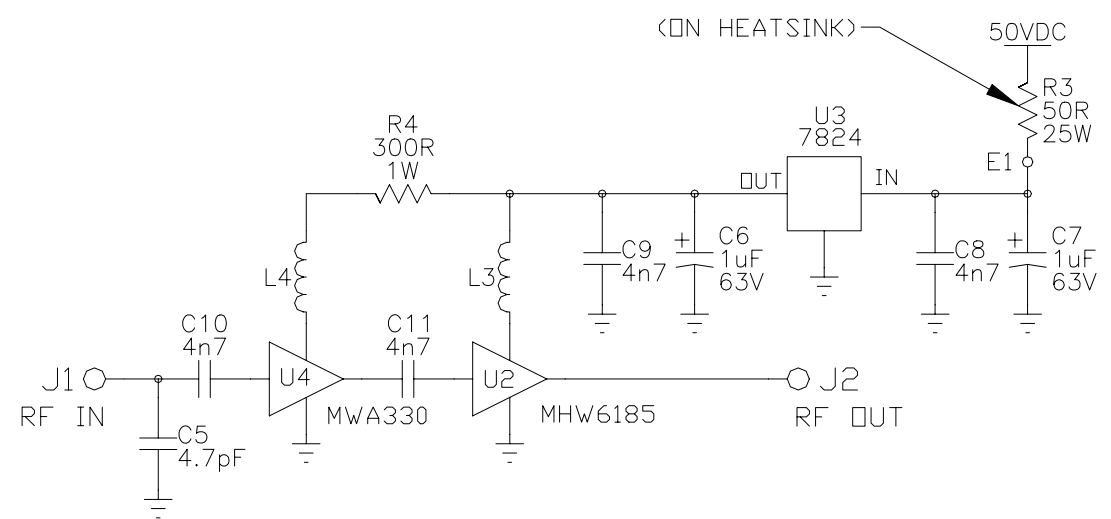
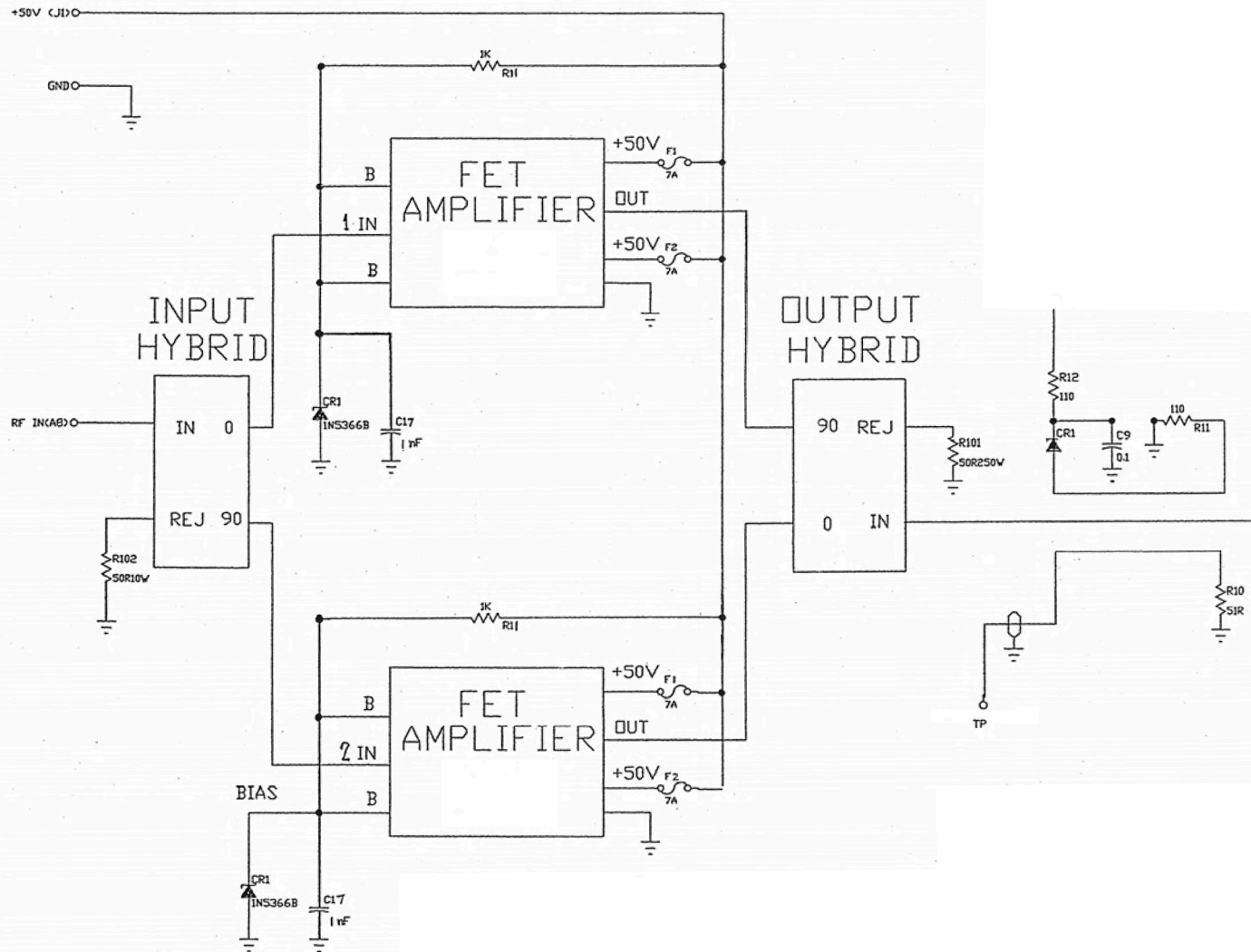


Figure 3 10A1453 High Band Preamplifier Schematic sht10 Rev1



BLOCK DIAGRAM OF PA SECTION

POWER AMPLIFIER HEATSINK ASSEMBLY

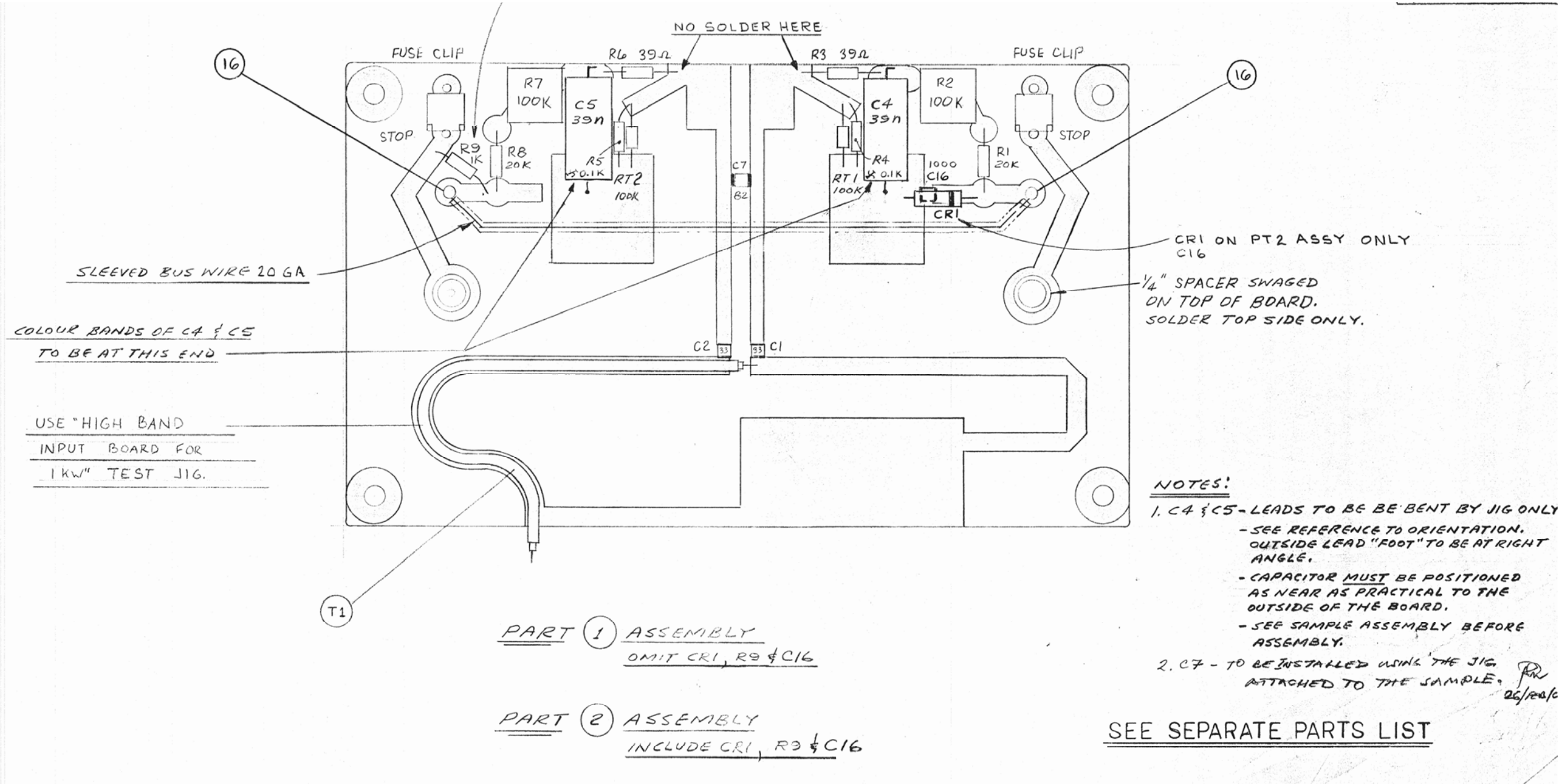
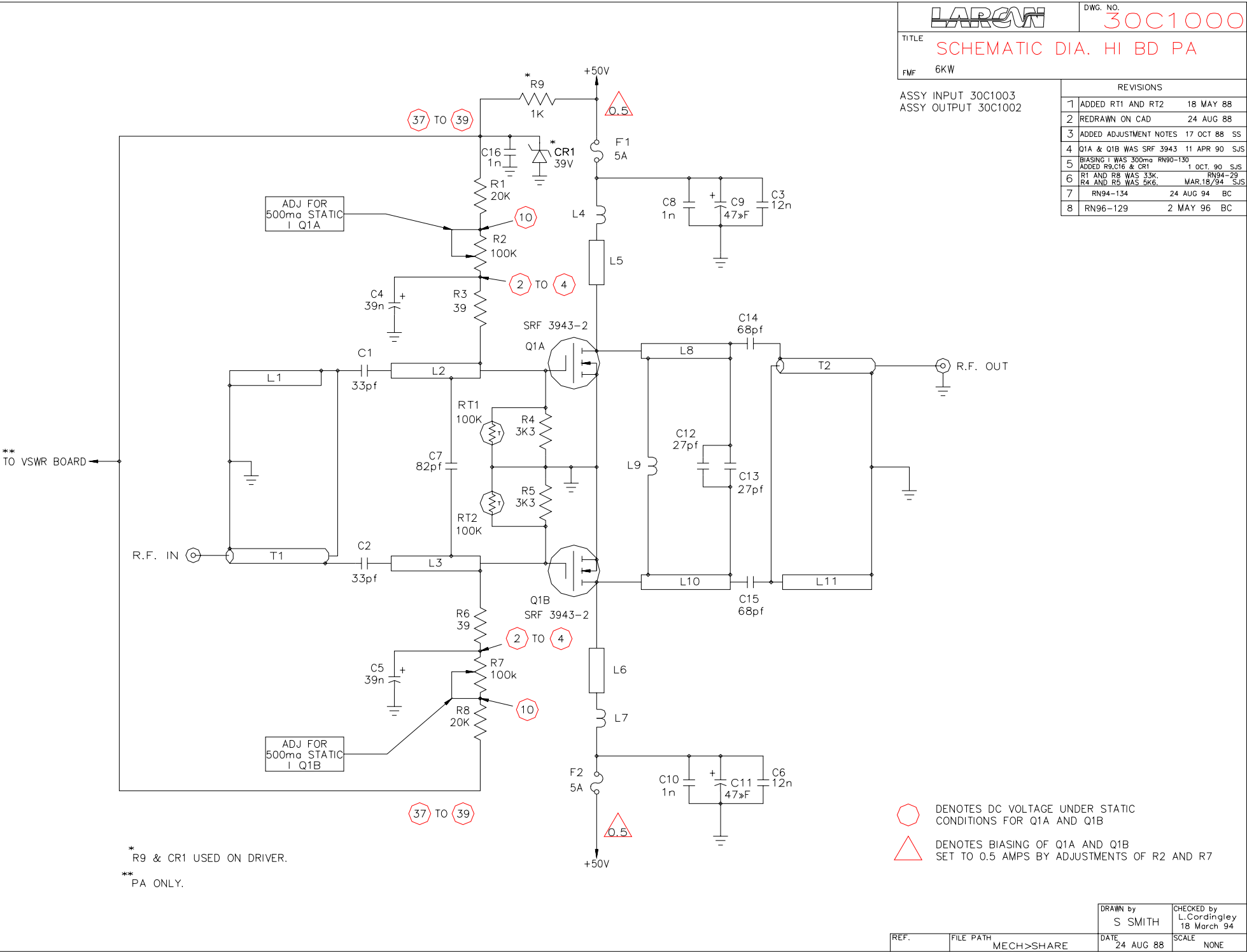


Figure 7 Input Board Assembly 30C1003 rev 8.3

## POWER AMPLIFIER HEATSINK ASSEMBLY



### Figure 8 Single Stage PA Schematic 30C1000 rev 8

POWER AMPLIFIER HEATSINK ASSEMBLY

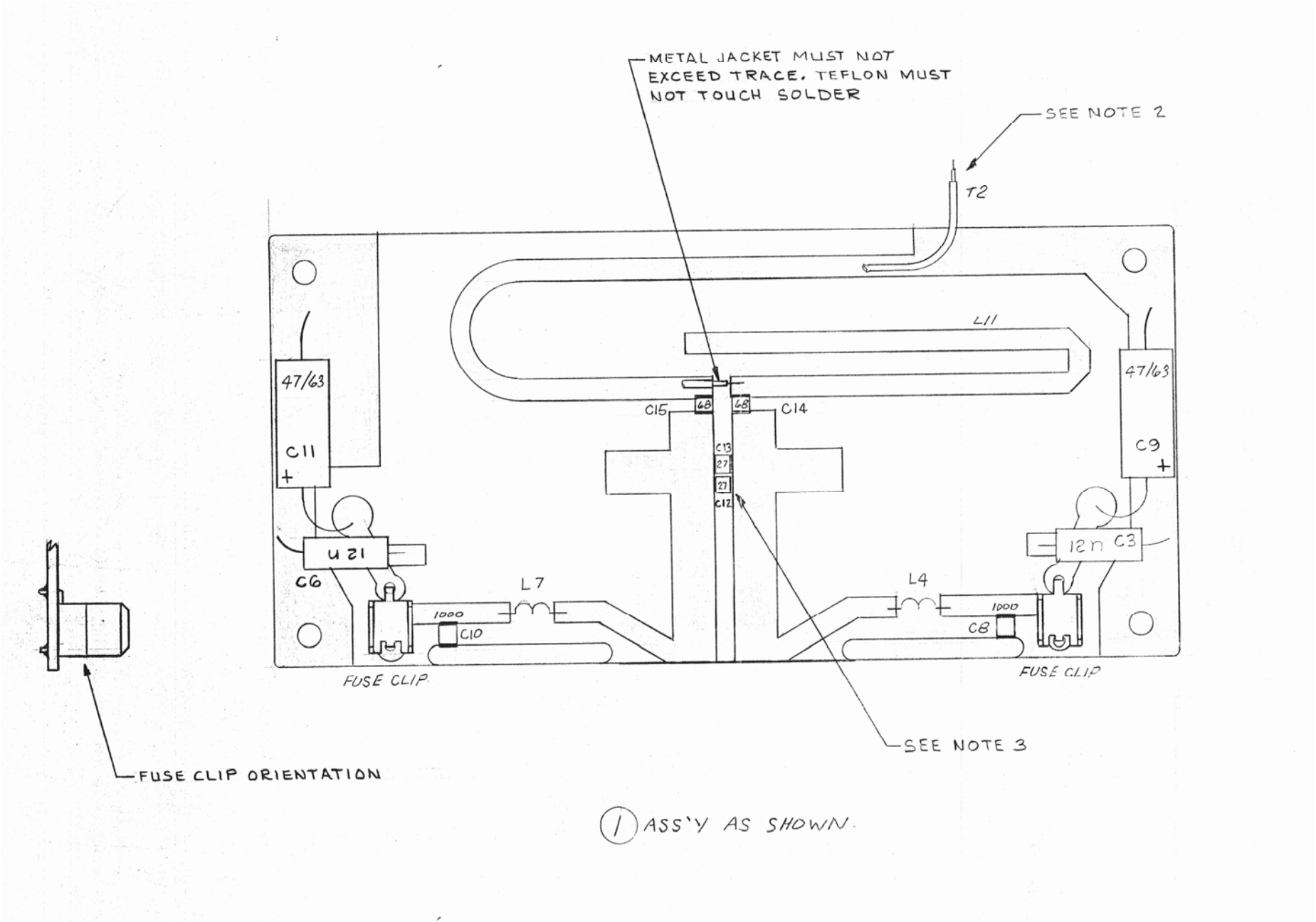


Figure 9 Output Board Assembly 30C1002 rev 1.1

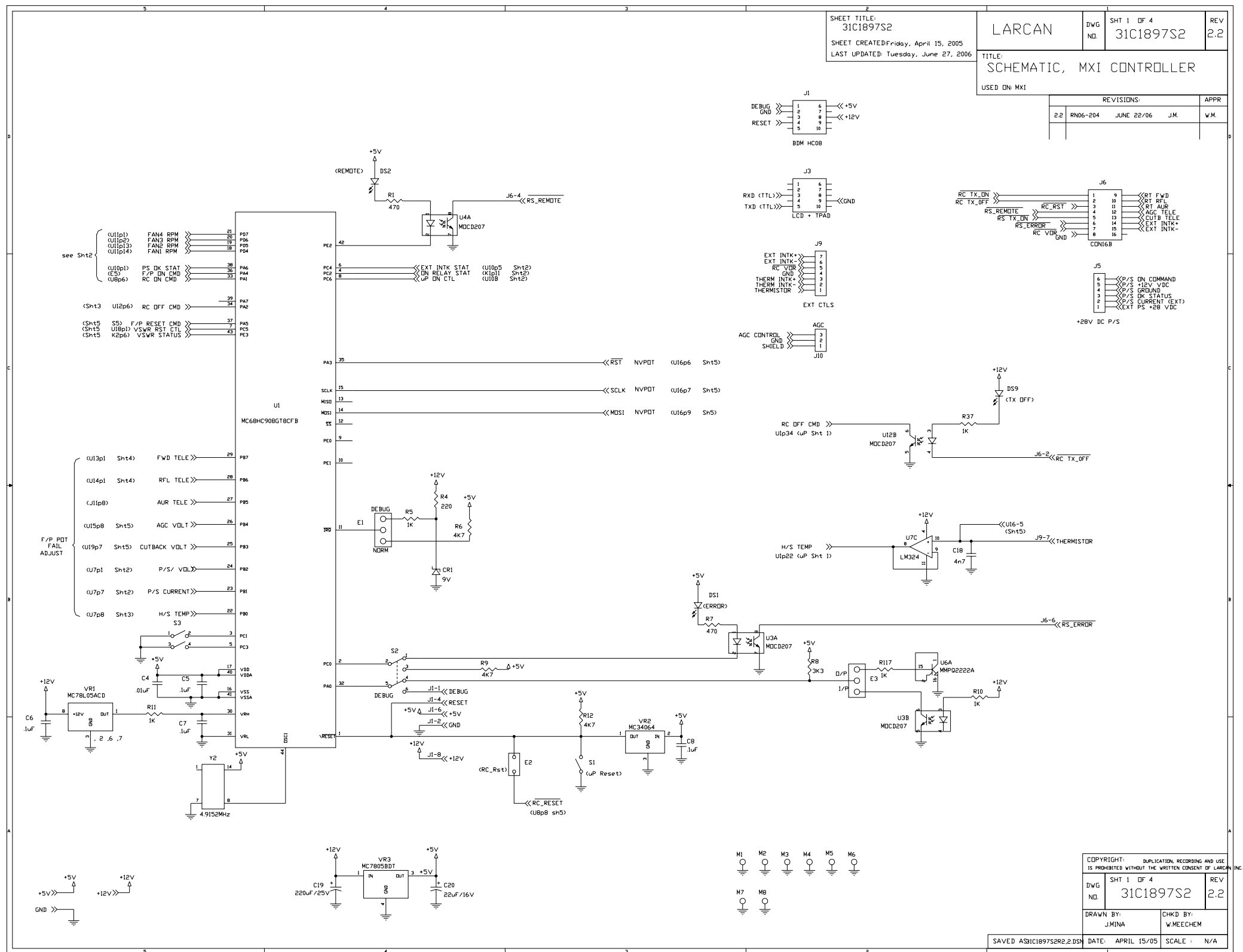
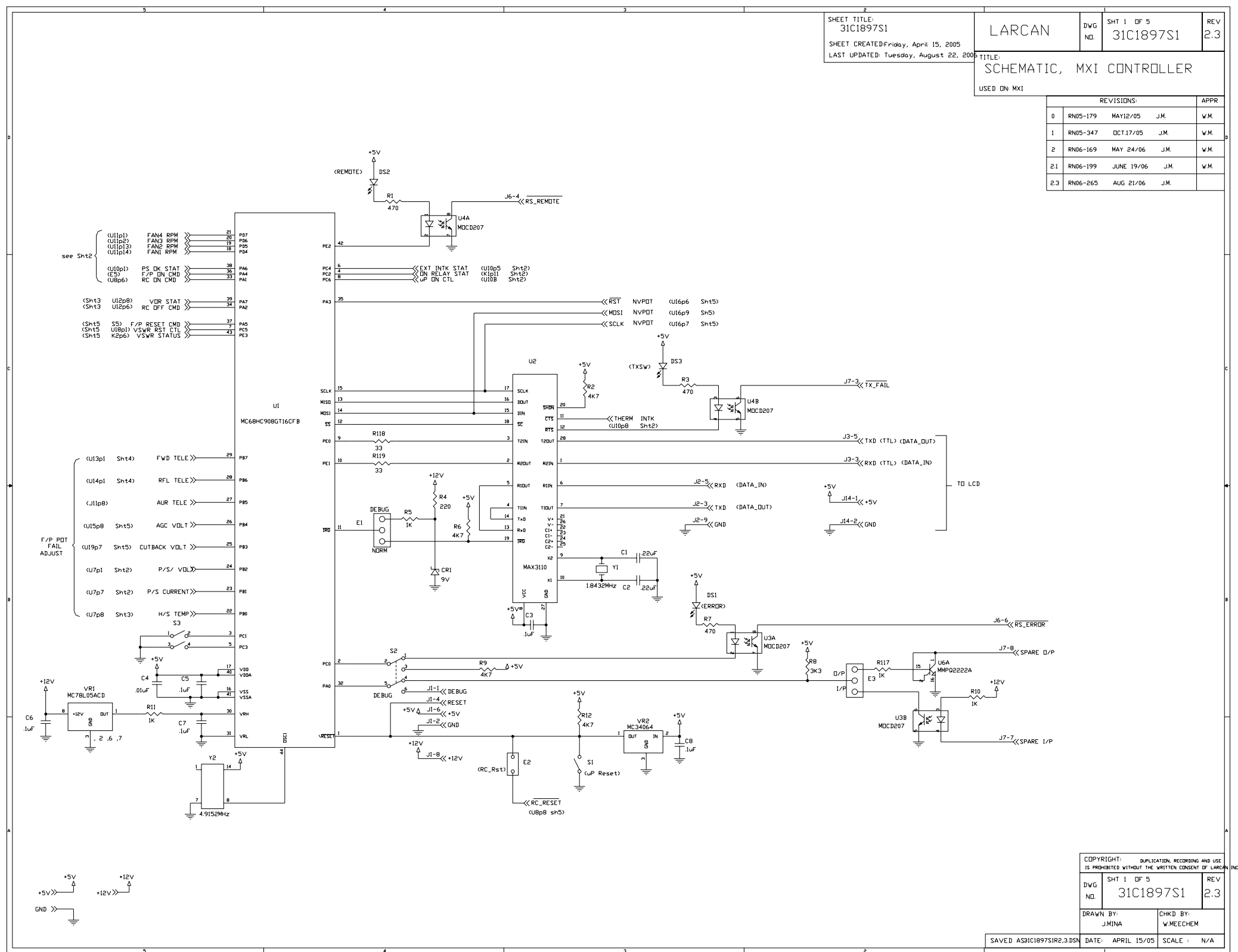


Figure 23 MXi Controller Board Assembly Diagram 31C1897A2 sht1 Rev 2.2



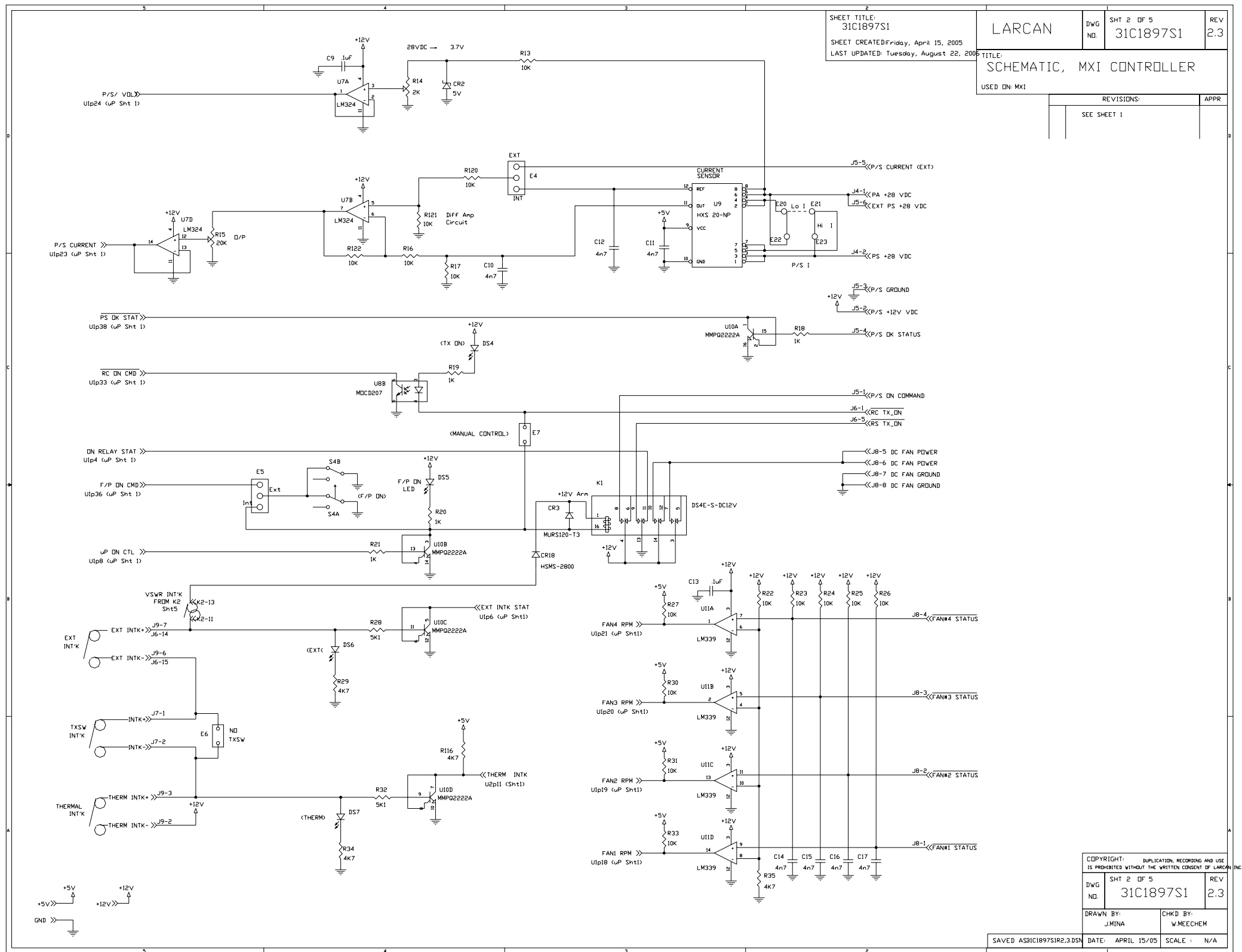
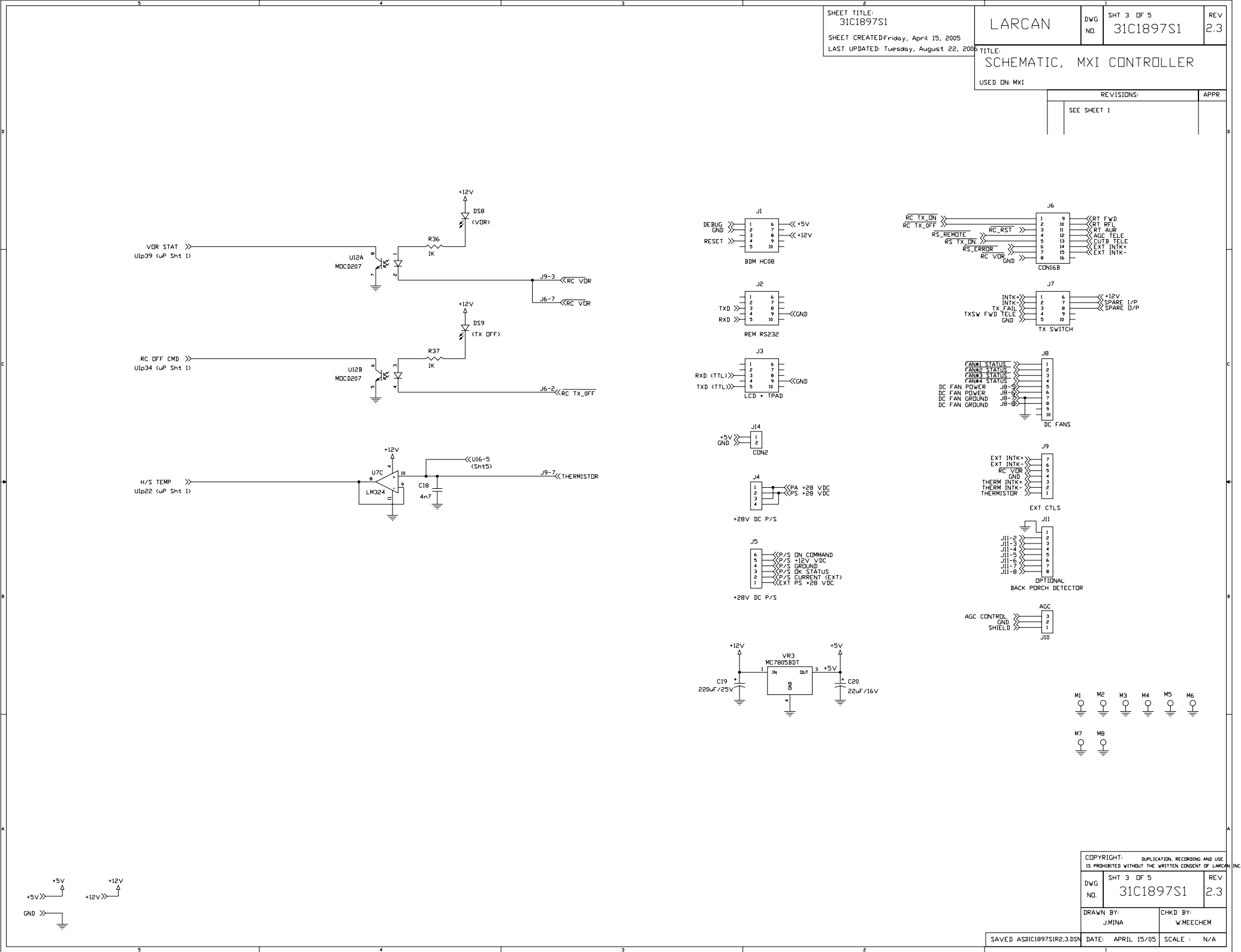


Figure 25 MXi Controller Board Schematic 31C1897S2 sht2 Rev 2.3





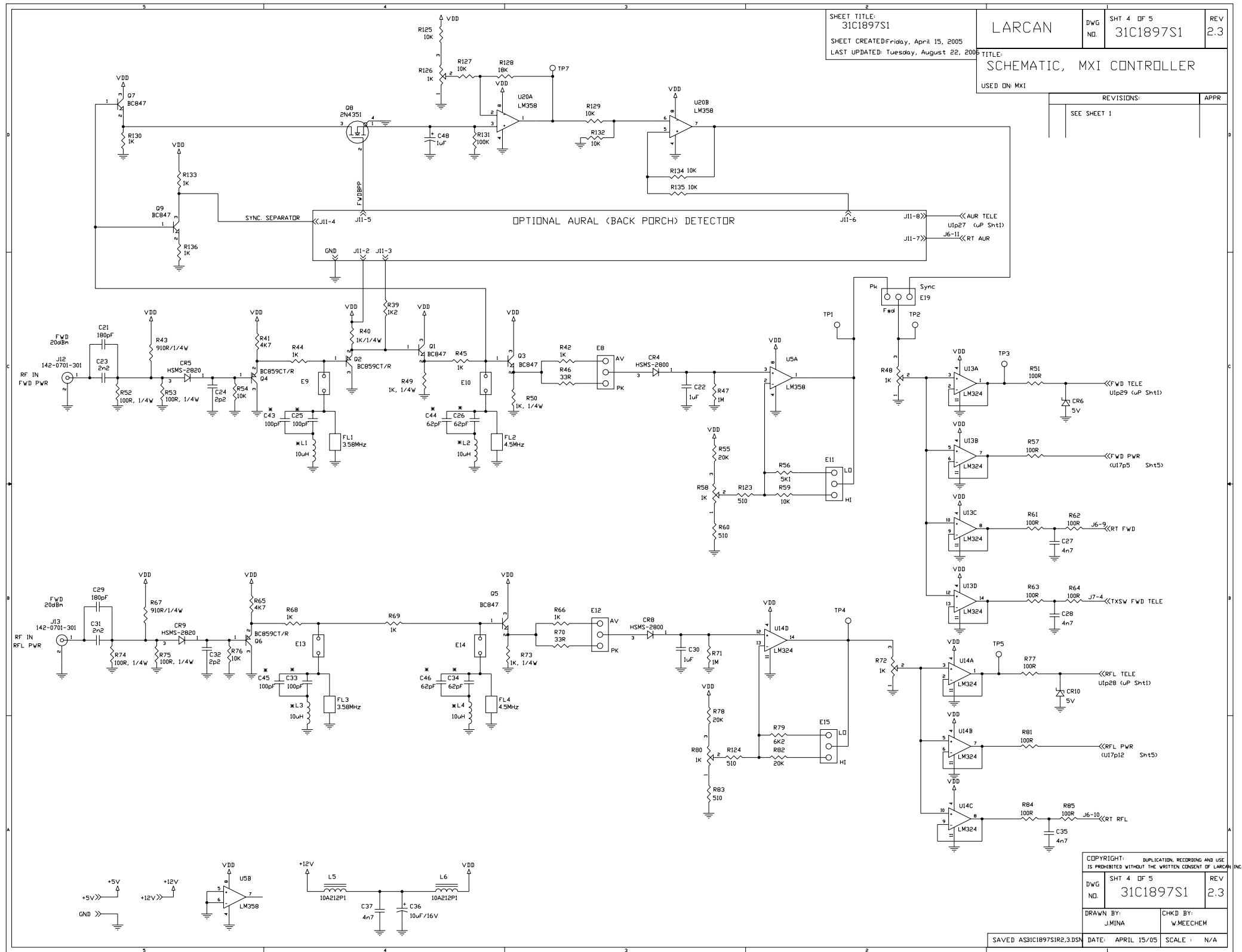


Figure 27 MXi Controller Board Schematic 31C1897S4 sht4 Rev 2.3

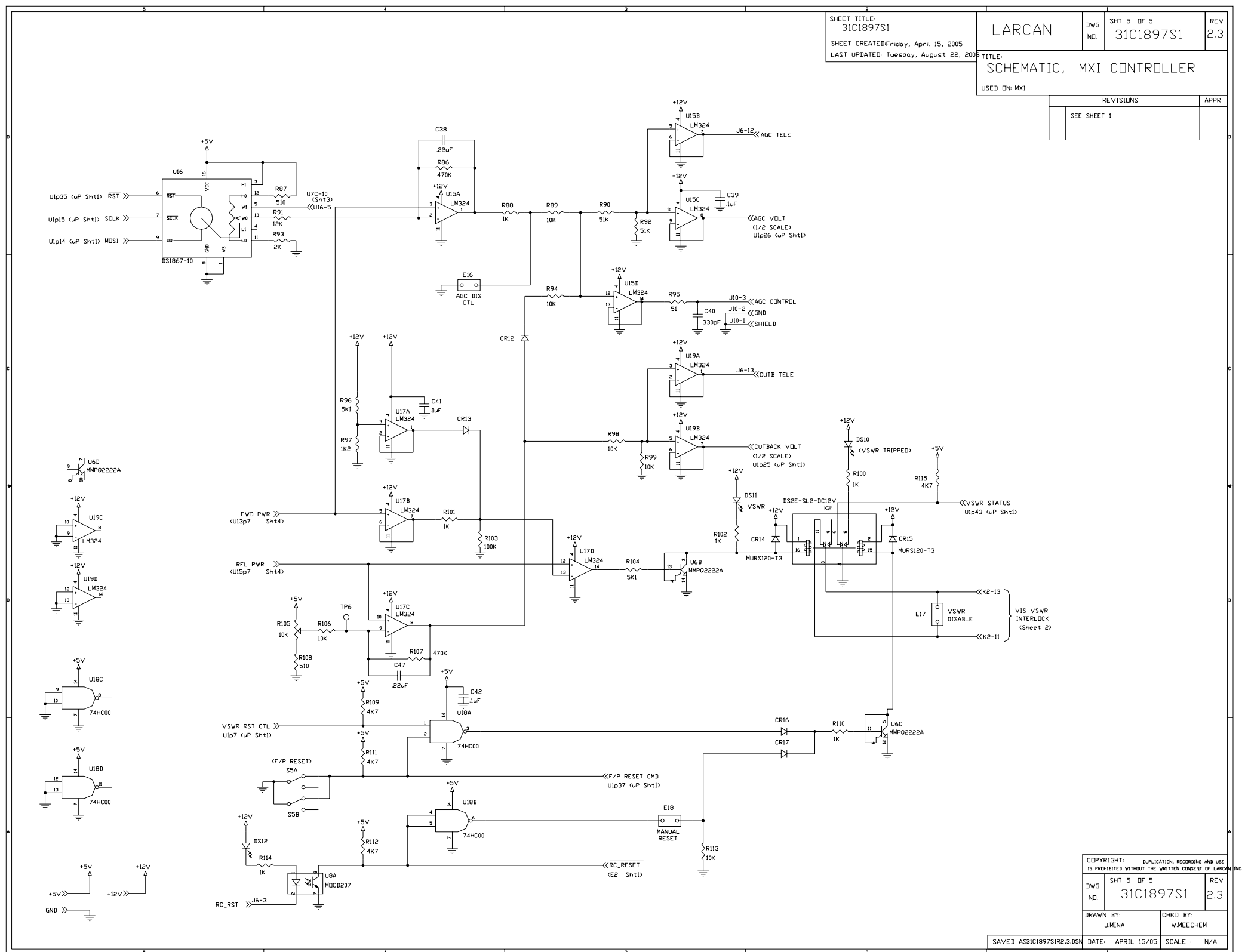


Figure 28 MXi Controller Board Schematic 31C1897S5 sht5 Rev 2.3