

Figure 4 Generic Helical Resonator Bandpass Filter Assembly

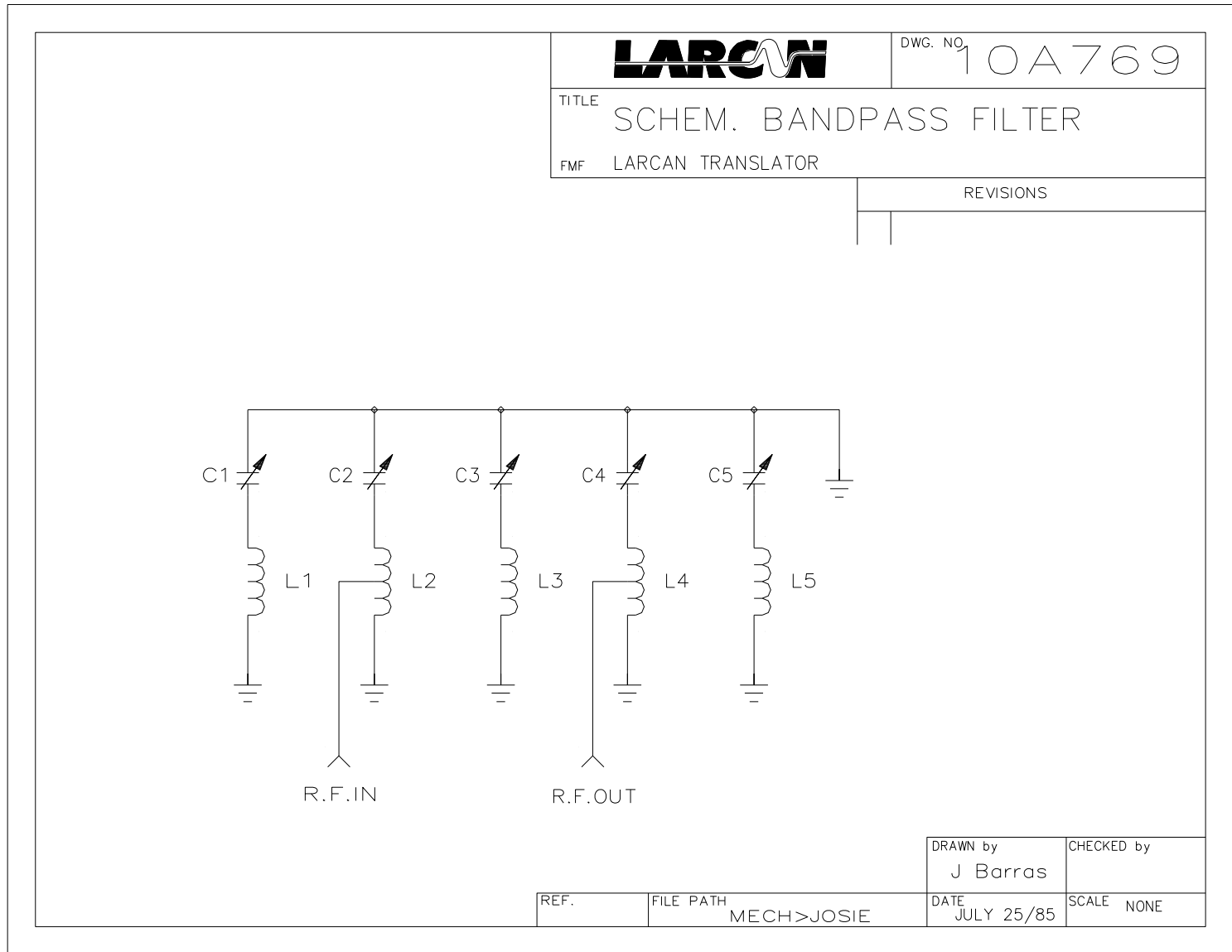


Figure 5: Filter Schematic

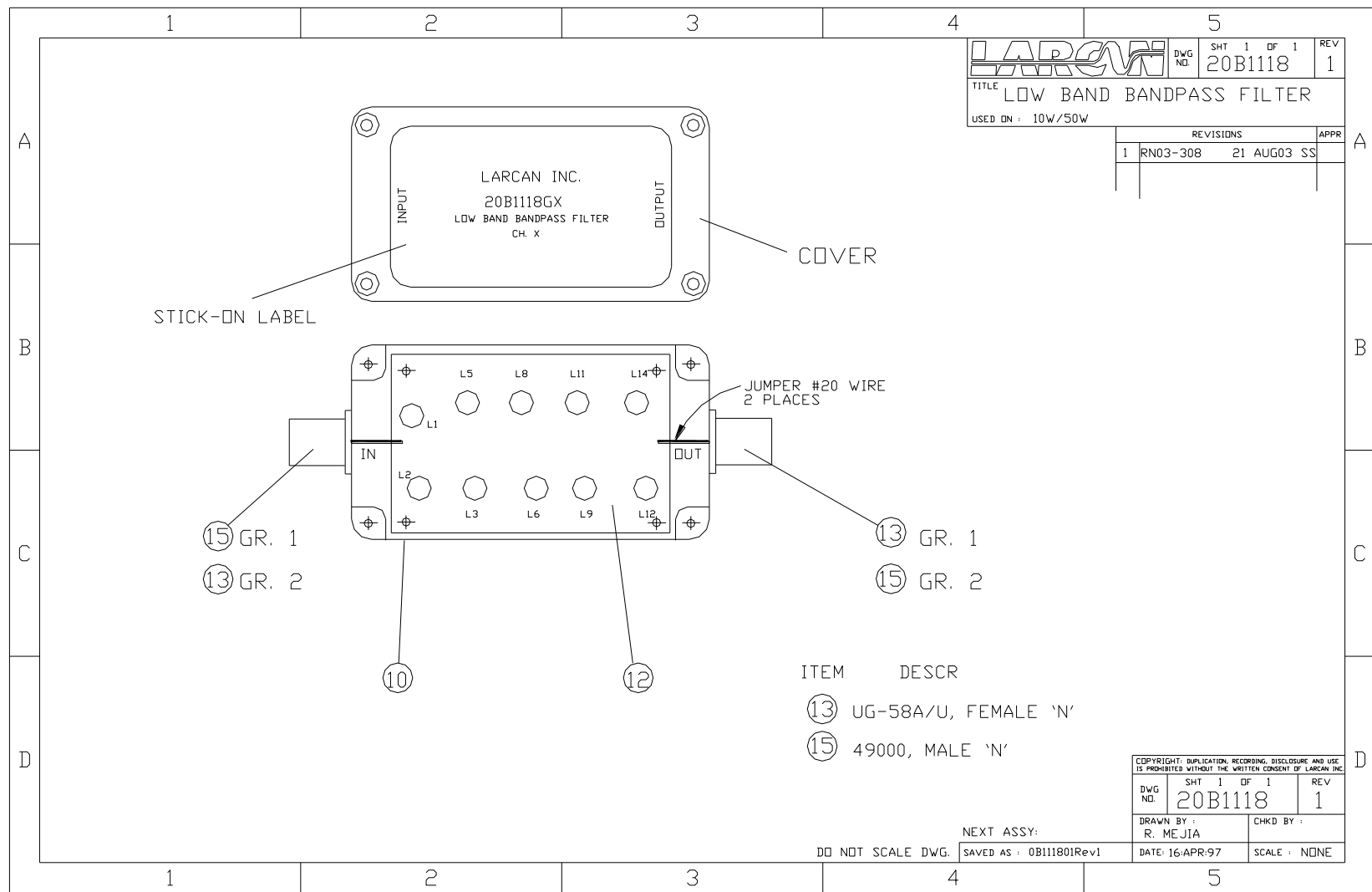


Figure 6 Low Band Bandpass and Notch Filter Assembly

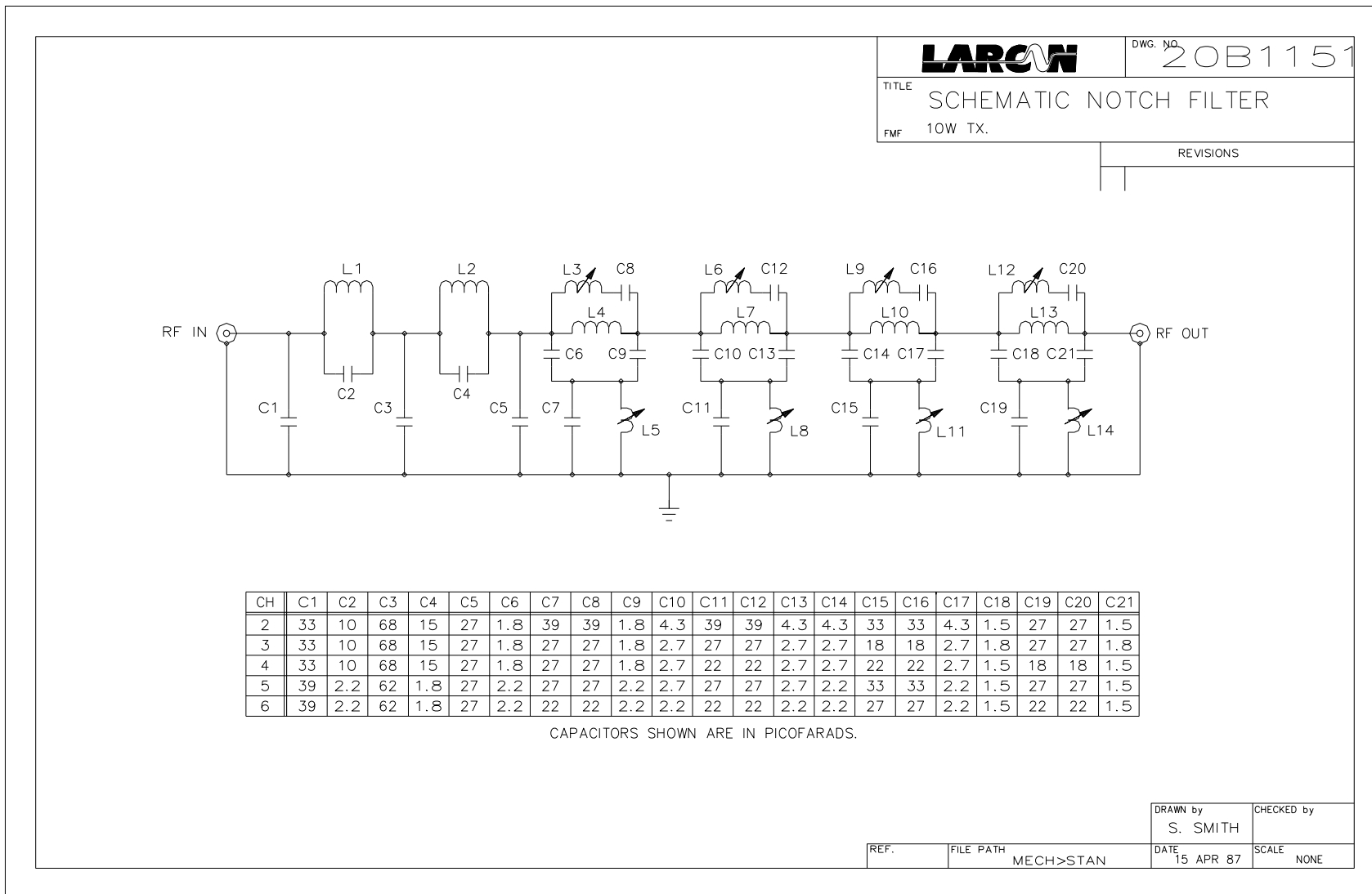


Figure 7 Low Band Bandpass and Notch Filter Schematic

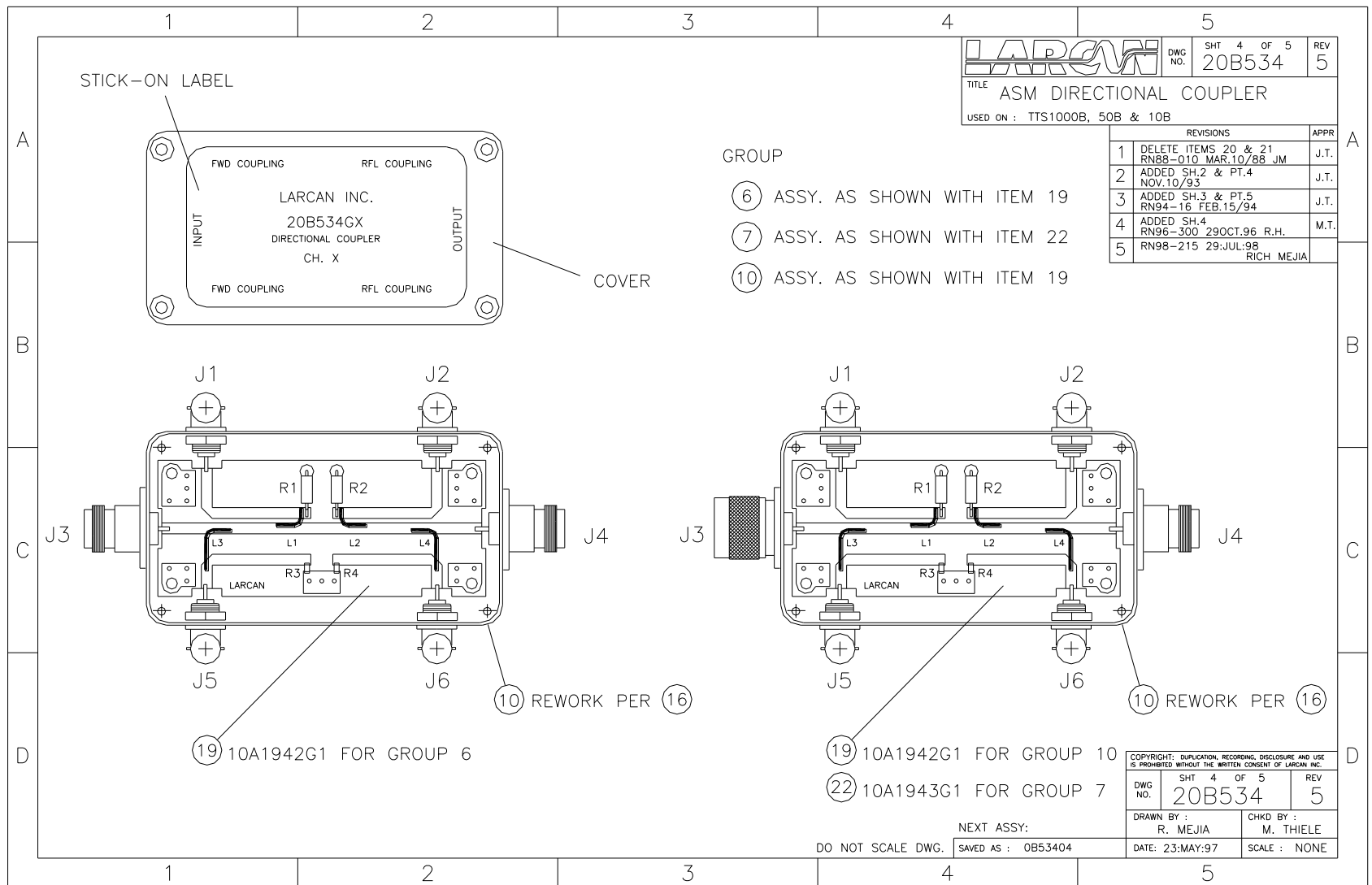


Figure 8 RF Directional Coupler

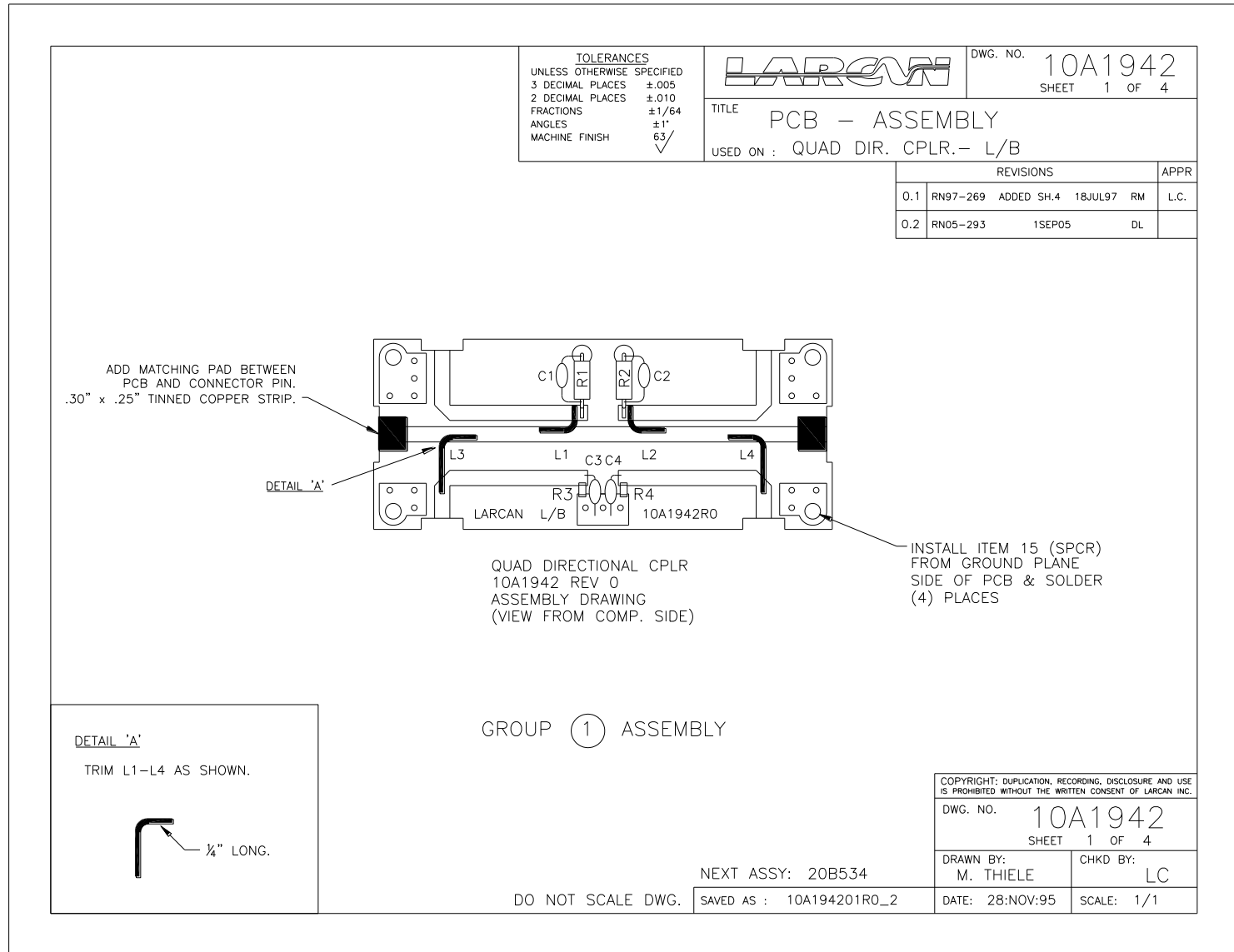


Figure 9 Low Band Coupler PC Board Assembly

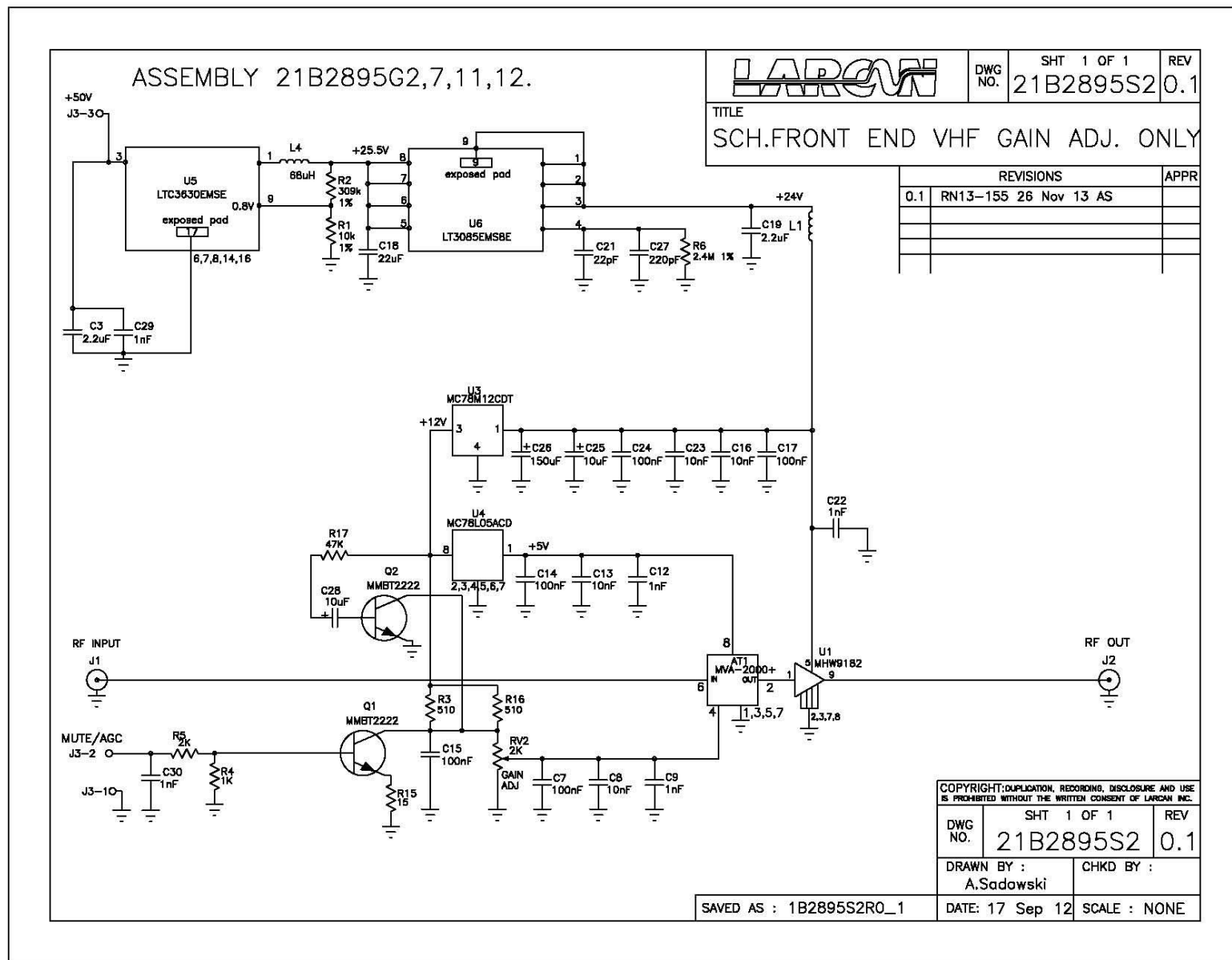


Figure 11: Preamplifier Schematic

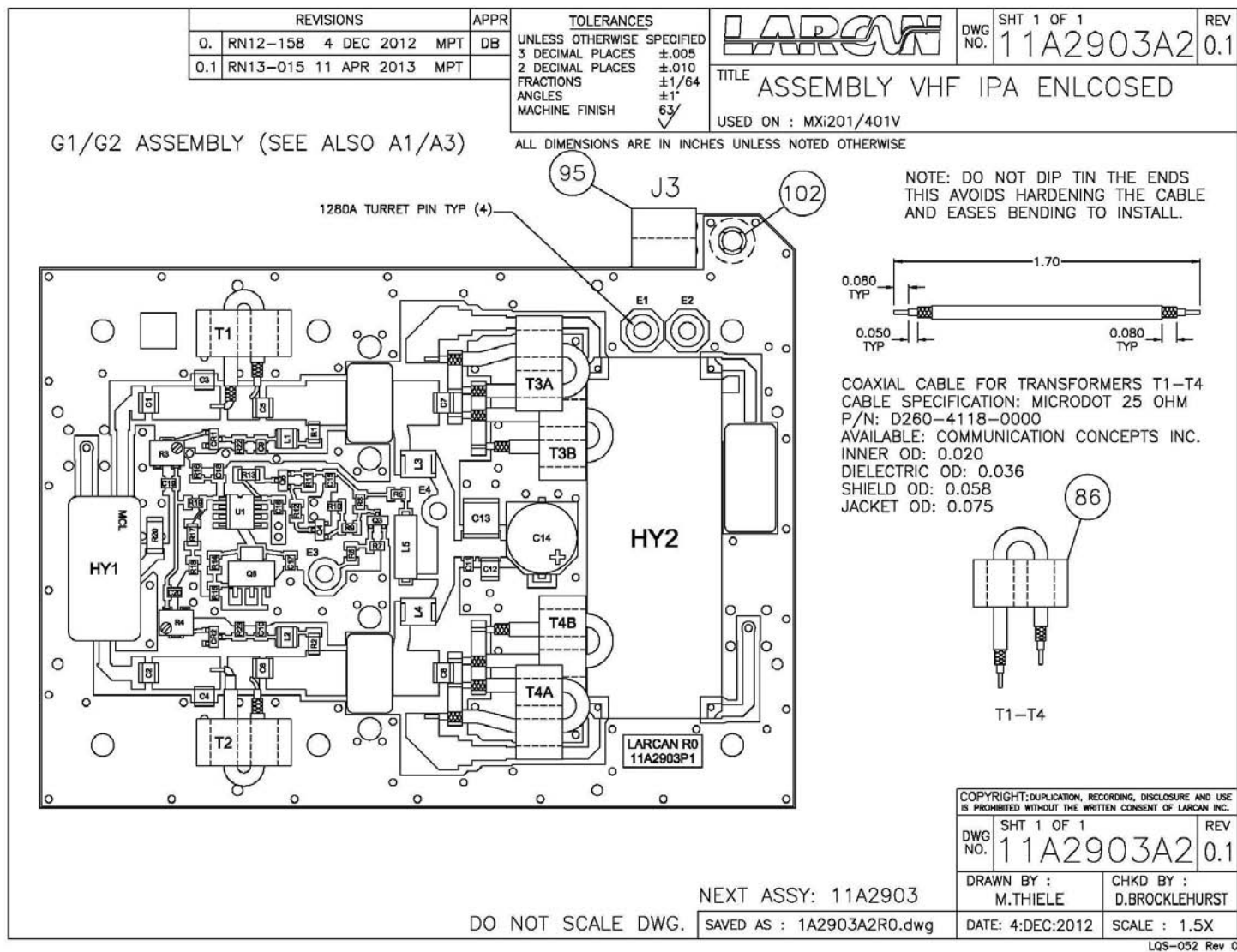


Figure 12: Final Amplifier Assembly (sht 1)

ASSEMBLY SEQUENCE:

1. INSTALL WIRING BETWEEN E1-E3 AND E2-E4
2. POSITION FRAME AND RF CONNECTORS J1/J2 ON THE PCB.
3. SOLDER ALL PINS OF THE FRAME TO THE PCB ASSEMBLY.
4. SOLDER THE RF CONNECTORS J1/J2 TO THE PCB ASSEMBLY.
5. INSTALL THE MOUNTING PLATE (100) TO THE REAR OF THE PCB ASSY USING 3/16" LG SCREWS + BELLEVILLE WSHR. ENSURE THAT ALL HOLES IN THE PCB AND MOUNTING PLATE ARE ALIGNED BEFORE TIGHTENING SCREWS.
6. INSTALL TERMINATION R21 (75) AS SHOWN.
7. CLAMP THE FETS IN PLACE AS INDICATED IN THE DETAIL.

TOLERANCES		
UNLESS OTHERWISE SPECIFIED		
3 DECIMAL PLACES	±.005	
2 DECIMAL PLACES	±.010	
FRACTIONS	±1/64	
ANGLES	±1°	
MACHINE FINISH	63/	

ALL DIMENSIONS ARE IN INCHES UNLESS NOTED OTHERWISE



DWG NO.	SHT 1 OF 1	REV
11A2903A3		0.1

TITLE ASSEMBLY VHF IPA ENCLOSED

USED ON : MXI201/401V

REVISIONS				APPR
0.	RN12-158	4 DEC 2012	MPT	DB
0.1	RN13-015	11 APR 2013	MPT	

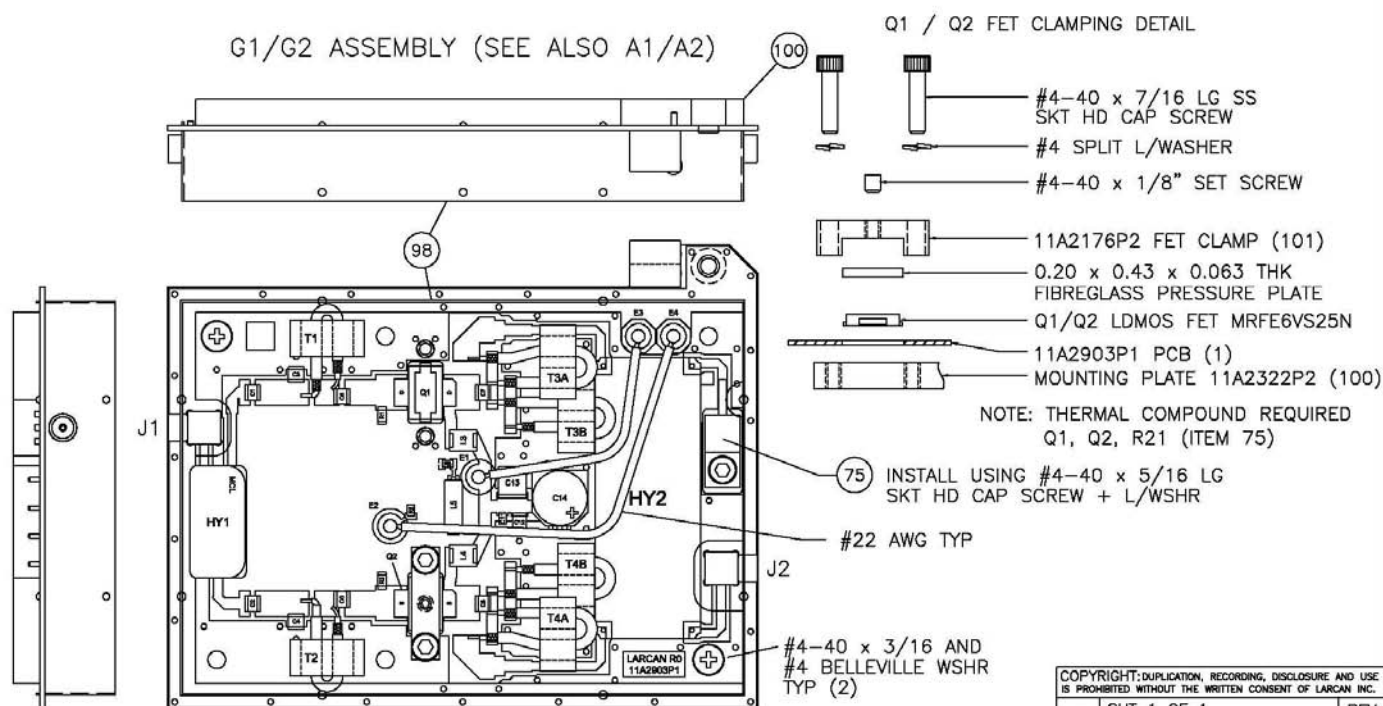


Figure 13: Final Amplifier Assembly (sht 2)

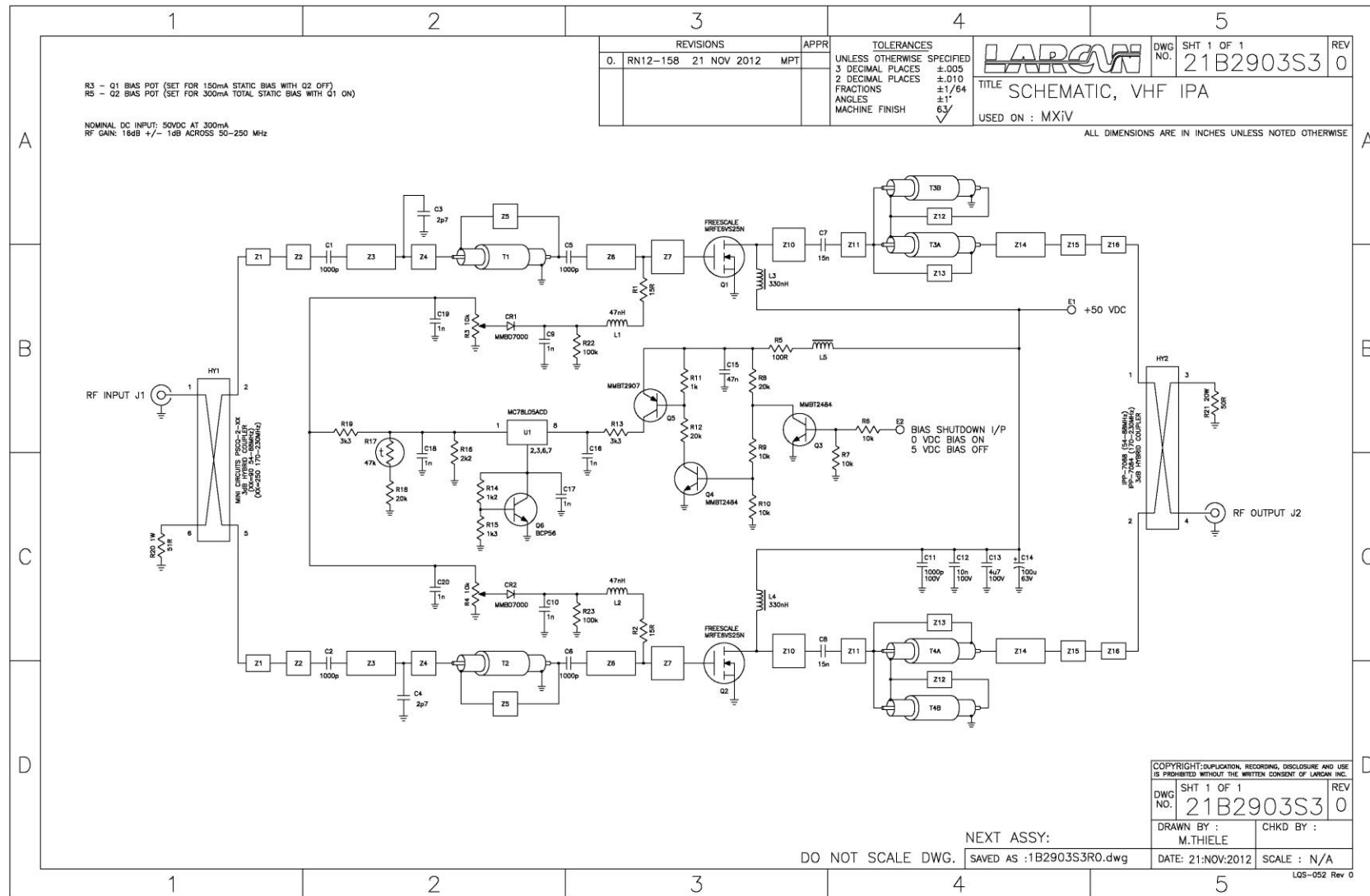


Figure 14: Final Amplifier Schematic

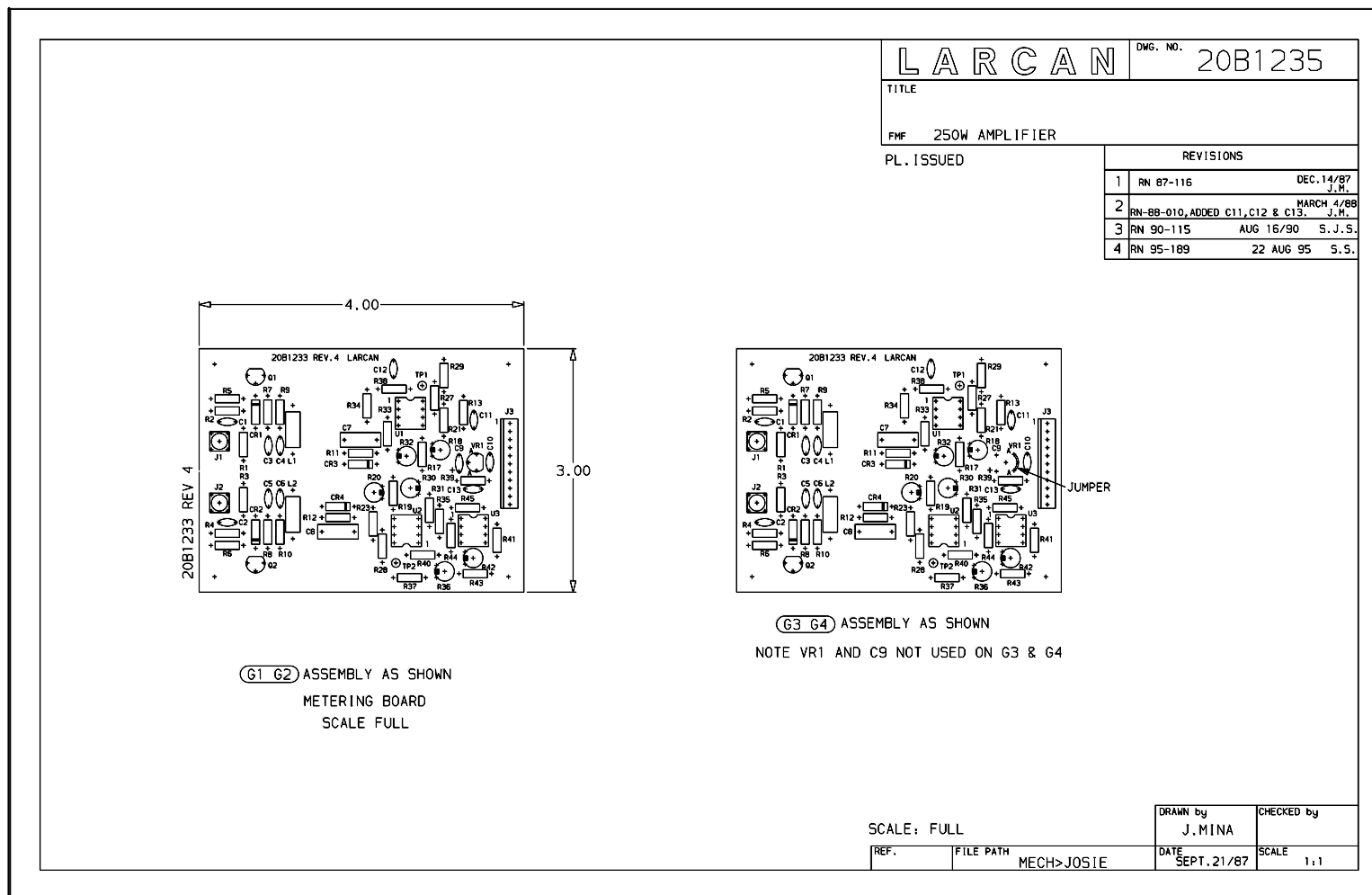


Figure 16: Metering Board Assembly

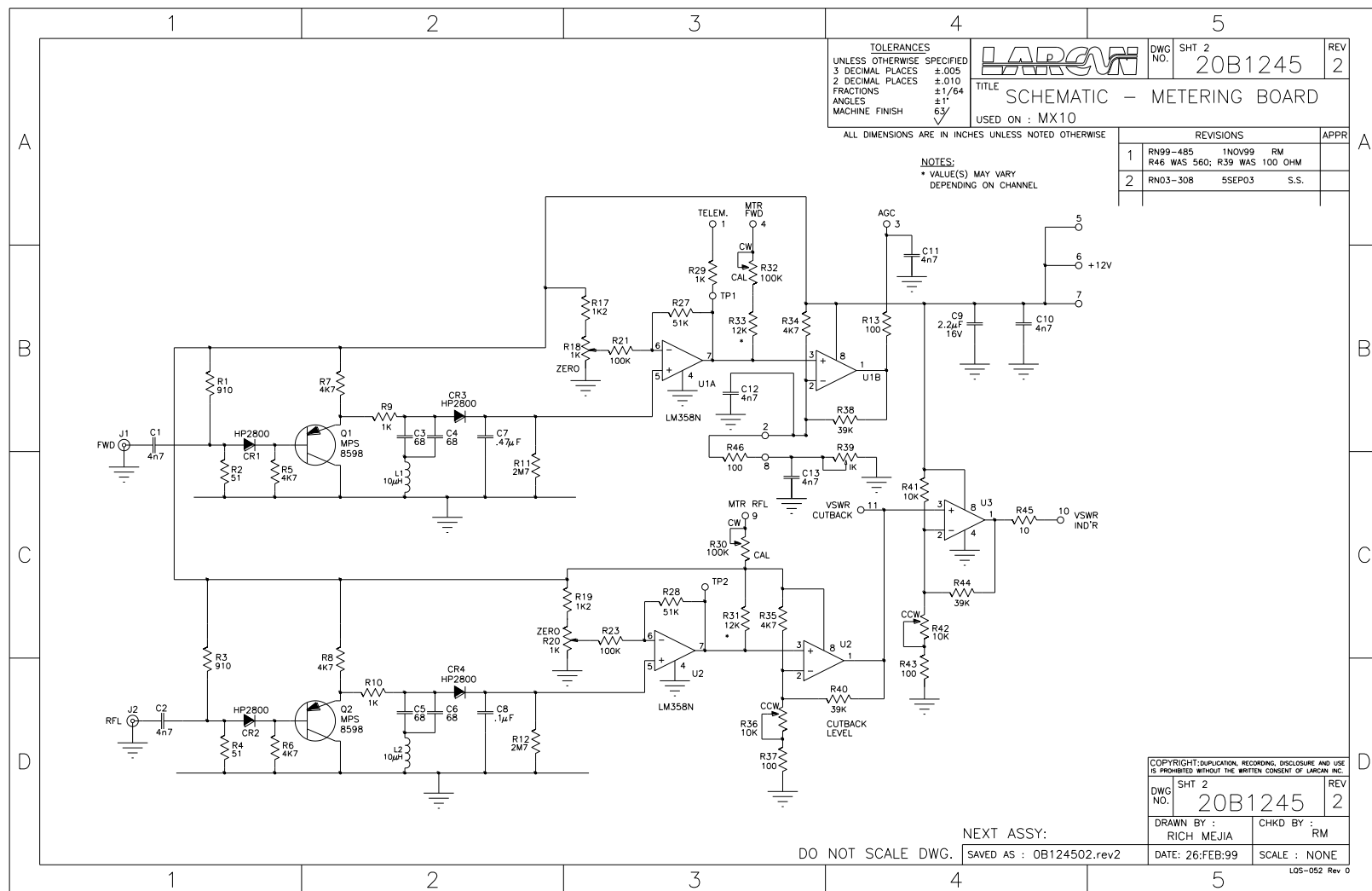


Figure 17: Metering Board Schematic