



RFM1G9-US Installation Instructions

DRAFT

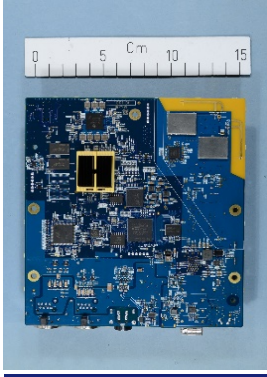
Table of Contents

Introduction	3
ESD Handling Instructions	3
Installation	4
Regulatory Compliance	5
Compliance Notice to Host Integrator	6

DRAFT

Introduction

The model RFM1G9-US is a radio transceiver module with frequency operation within the DECT band 1920-1930Mhz.



ESD Handling Instructions



CAUTION

Contains parts and assemblies susceptible to damage by Electrostatic Discharge (ESD)

This device is sensitive to electrostatic discharge and should be installed by personnel trained in ESD awareness. Proper handling procedures include wearing anti-static wrist straps

Installation

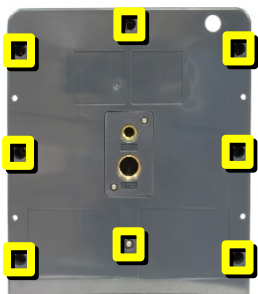
The model RFM1G9-US shall only be installed in approved HME and/or Clear-Com enclosure.



Install model RFM1G9-US in front housing using screws. When installing, ensure gasket is straight around connectors with no gaps.



Install back housing using screws and washers.



Regulatory compliance

Applicant Name: HM Electronics, Inc.

Applicant Address: 2848 Whiptail Loop, Carlsbad, CA 92010 USA

Manufacturer Name: HM Electronics, Inc.

Manufacturer Address: 2848 Whiptail Loop, Carlsbad, CA 92010 USA

Country of Origin: USA

Brand: HME

Caution: All products are compliant with regulatory requirements detailed in this document when the user follows all installation instructions and operating conditions per HME and/or Clear-Com specifications

Caution: Use of accessories and peripherals other than those recommended by HME and/or Clear-Com may void the product's compliance as well as the user's authority to operate the equipment.

FCC Notice

This device complies with Part 15 of the FCC rules. Operation is subject to the following two conditions: (1) This device may not cause harmful interference, and (2) This device must accept any interference received, including interference that may cause undesired operation.

NOTE: This equipment has been tested and found to comply with the limits for a Class A digital device, pursuant to Part 15 of the FCC rules. These limits are designed to provide reasonable protection against harmful interference when the equipment is operated in a commercial environment. This equipment generates, uses and can radiate radio frequency energy and, if not installed and used in accordance with the instruction manual, may cause harmful interference to radio communication. Operation of this equipment in a residential area is likely to cause harmful interference, in which case the user will be required to correct the interference at his own expense.

Changes or modifications not expressly approved by HME and/or Clear-Com, LLC could void the user's authority to operate this equipment.

FCC/IC/EC RF Exposure Warning:

- This product complies with FCC/IC/EC radiation exposure limits set forth for an uncontrolled environment.

- This product may not be co-located or operated in conjunction with any other antenna or transmitter.

Industry Canada Compliance Statement

This Class[A] digital device complies with Canadian ICES-003.

Avis de conformité à la réglementation d'Industrie Canada

Cet appareil est conforme aux CNR d'Industrie Canada applicables aux appareils radio exempts de licence. L'exploitation est soumise aux deux conditions suivantes:

- (1) cet appareil ne doit pas provoquer d'interférence, et
- (2) cet appareil doit accepter toute interférence radioélectrique subie, même si l'interférence est susceptible d'en compromettre le fonctionnement.

Cet émetteur exempt de licence est équipé d'une antenne intégrée. Cet émetteur exempt de licence n'est pas autorisé à fonctionner avec une autre antenne.

Cet appareil numérique de la class[*] est conforme à la norme NMB-003 du

Compliance Notice to Host Integrator

Model RFM1G9-US is a module transmitter that is installed inside a host or finished product. It was certified with single modular approval per Federal Communications Commission (FCC) CFR47 Telecommunications, Part 15.212 under Subpart C Intentional Radiators. Single modular approval does not necessarily eliminate FCC testing on the finished product. For example, FCC Part 15 B requirement for the digital device (unintentional radiator) of a composite system, RF Exposure and/or Co-location requirement may still be applicable to the finished product.

The host integrator is responsible to ensure that the finished product complies with all applicable FCC equipment authorization regulations.

The FCC/ISED certification of the module transmitter is voided if the host integrator does not follow its FCC/IC's grant notes and operation condition/installation instructions.

This module transmitter contains an integrated antenna, which is also integral to its FCC/ISED certification, so using any other antenna would void its FCC/ISED certification.

This module transmitter must not collocate or operate simultaneously with any other antenna or transmitter within a host device, except in accordance with multi-transmitter procedures.

Cet émetteur de module ne doit pas colocaliser ou fonctionner simultanément avec une autre antenne ou émetteur dans un dispositif hôte, sauf conformément aux procédures multi-émetteurs.

This license-exempt transmitter is equipped with an integrated antenna. This license-exempt transmitter is not allowed to operate with any other antenna.

Cet émetteur exempt de licence est équipé d'une antenne intégrée. Cet émetteur exempt de licence n'est pas autorisé à fonctionner avec une autre antenne.

The host product shall be properly labeled to identify the modules within the host product.

Le produit doit être correctement étiqueté pour identifier les modules inclus dans le produit hôte.

The host product shall be properly labelled to identify the modules within the host product. If the FCC ID of this module transmitter is not visible when the module transmitter is installed inside a host or finished product, then the exterior surface of the host or finished product must also display a label with the following or similar wording: "Contains FCC ID: BYMRFM1G9-US"

The Innovation, Science and Economic Development Canada certification label of a module shall be clearly visible at all times when installed in the host product; otherwise, the host product must be labelled to display the Innovation, Science and Economic Development Canada certification number for the module, preceded by the word "Contains" or similar wording expressing the same meaning, as follows: "Contains IC: 1860A-RFM1G9"

L'étiquette d'Innovation et de Sciences et Développement économique Canada du module doit être clairement visible en tout temps lorsqu'elle est affichée sur le produit; dans d'autres cas, le produit doit être étiqueté pour afficher le numéro d'Innovation et de Sciences et Développement économique Canada pour le module, précédé du mot "Contient" ou un libellé similaire exprimant la même signification, comme suit: "Contient IC: 1860A-RFM1G9"

DRAFT