

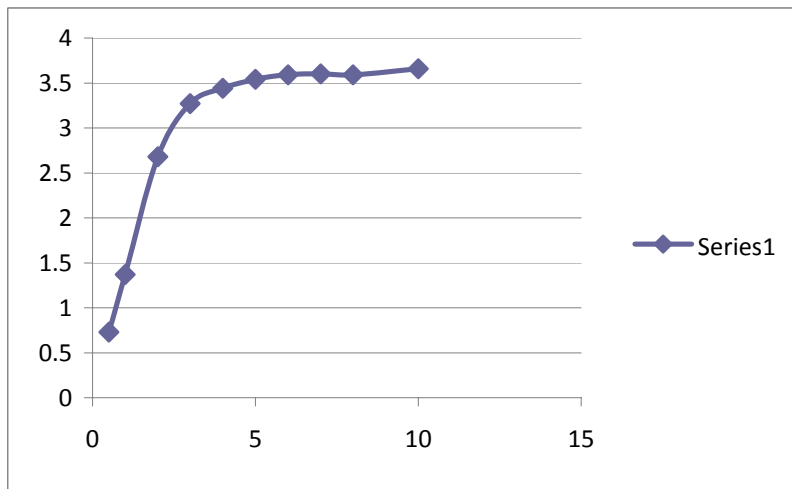
COM2000BP SN W34L0977

154.600 MHz Audio level = 2 mV

Freq. (Hz)	Deviation (kHz)	Freq. (Hz)	Deviation (kHz)	Freq. (Hz)	Deviation (kHz)
400	0.59	1700	2.05	3000	2.73
500	0.76	1800	2.16	3100	2.65
600	0.87	1900	2.25	3200	2.58
700	0.99	2000	2.35	3300	2.49
800	1.1	2100	2.44	3400	2.38
900	1.21	2200	2.52	3500	2.29
1000	1.31	2300	2.6	3600	2.16
1100	1.42	2400	2.66	3700	2.07
1200	1.54	2500	2.72	3800	1.99
1300	1.65	2600	2.75	3900	1.89
1400	1.76	2700	2.78	4000	1.78
1500	1.86	2800	2.79		
1600	1.97	2900	2.77		

154.600 MHz Audio Frequency = 2500 Hz

Audio Level (mV)	Deviation (kHz)	99% BW (kHz)
0.5	0.73	5.1
1	1.37	5.4
2	2.68	10.1
3	3.27	10.3
4	3.44	10.35
5	3.54	10.35
6	3.59	10.35
7	3.6	10.35
8	3.59	10.4
10	3.66	10.4



151.655 MHz Audio Frequency = 2500 Hz

Audio Level (mV)	Deviation (kHz)	99% BW (kHz)
0.5	0.64	5.1
1	1.26	5.4
2	2.51	10
3	3.05	10.25
4	3.25	10.25
5	3.31	10.3
6	3.32	10.3
7	3.36	10.3
8	3.39	10.35
10	3.4	10.4

