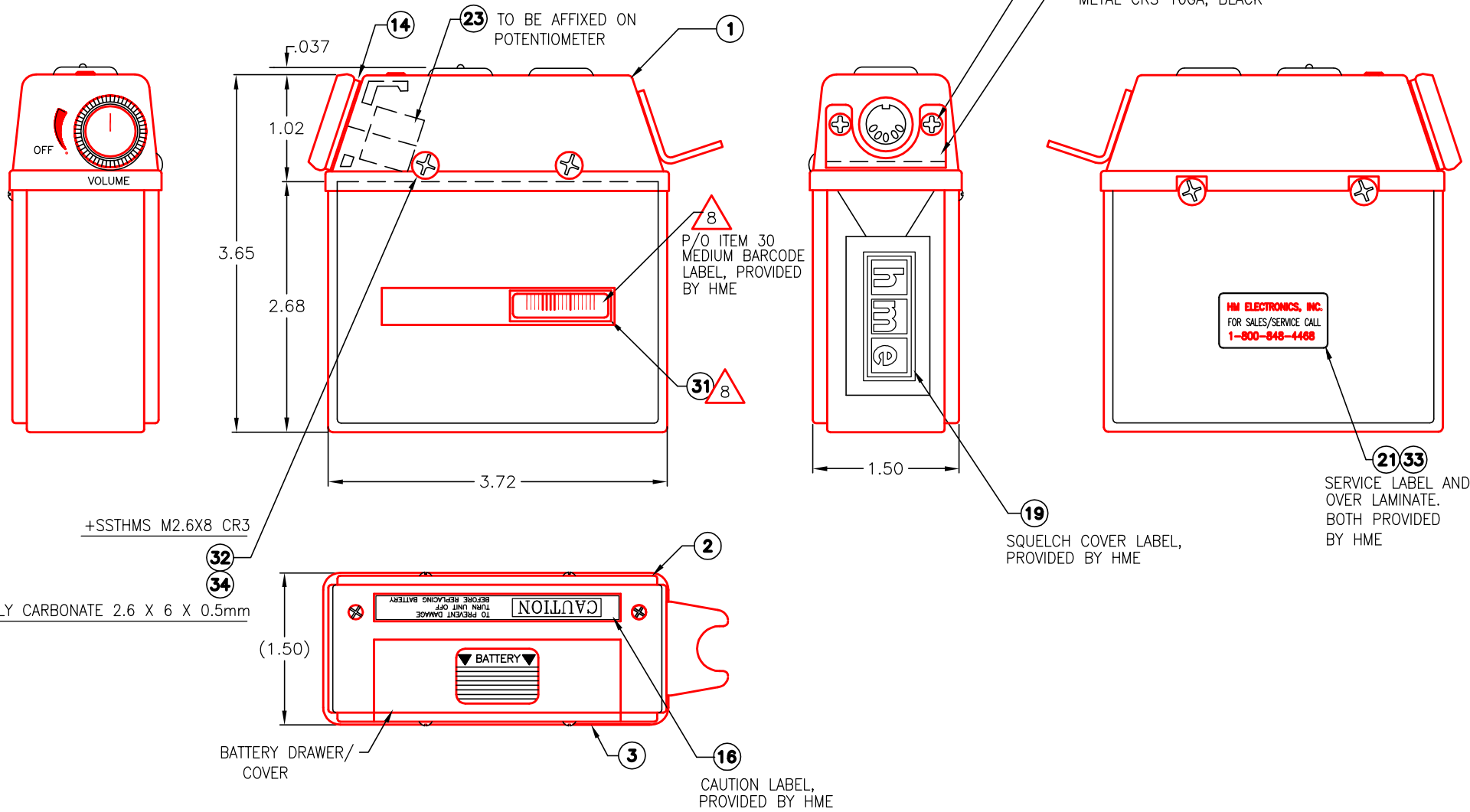
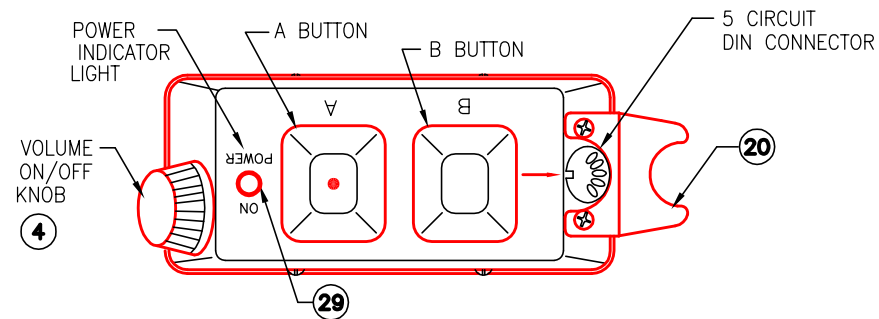


PARTS LIST				
ITEM NUMBER	NOMENCLATURE OR DESCRIPTION	MATERIAL/SPECIFICATION	DWG. PAGE NUMBER	QTY. REG.
1	CABINET MB (3HT-07107AB)	ABS RESIN (BLACK)	950150-2	1
2	CABINET MP (3HT-07108)	ABS RESIN (BLACK)	950150-2	1
3	CABINET JQ (2HT-05185)	ABS RESIN (BLACK)	950150-2	1
4	VOL KNOB BI (4HT-07109)	ABS RESIN (BLACK)	950150-2	1
5	SW KNOB FC (3HT-07105)	SILICON 50* (BLACK)	950150-3&10	1
6	TERMINAL DC (4HT-07940)	SUS304CSP t0.35	950150-3&9	2
7	L-METAL Z (4HT-06533)	SECC t1	950150-3&9	2
8	INSULATOR, FIBER (HME P/N 335020)	PVC .016 TH	950150-3&9	1
9	HOLDING METAL AU (4HT--7136)	SECC t1	950150-3&9	1
10	CHASSIS FC (3HT-07114)	SECC t1	950150-3&9	1
11	COVER FH (4HT-07103)	URETHANE SHEET	950150-3&10	1
12	HOLDER V (3HT-07107)	ABS RESIN (BLACK)	950150-3&10	1
13	STUD U (4HT-07104)	ABS RESIN (BLACK)	950150-3&9	1
14	PACKING GZ (4HT-07138)	FELT BLACK t1	950150-2&11	1
15	L-METAL AD (4HT-07170)	SECC t1	950150-3&9	1
16	LABEL, CAUTION (HME P/N 370643)	VINYL	950150-2	1
17	GASKET (HME P/N 416012)	BLACK RUBBER	950150-3	1
19	LABEL, SQUELCH COVER (HME P/N 370928)	VINYL	950150-2	1
20	BRACKET,CONN SUPPORT	METAL, BLACK	950150-2	1
21	LABEL, SERVICE (HME P/N 370882)	VINYL	950150-2	1
22	PACKING HX (4HT-08691)	POLYETHYLENE FOAM	950150-9	1
23	INSULATOR Z (4HT-08945)	POLYESTER FILM	950150-9	1
24	PACKING IK (4HT-08953)	RUBBER SPONGE	950150-9	1
26	LABEL, GNRC PCA (HME P/N 372015)	VINYL	950150-7&11	1
27	LABEL, BAG (HME P/N 371197)	PAPER	950150-2	1
29	COVER, LED LENS (HME P/N 394007)	PMMSA, CLEAR	950150-2	1
30	LBL, BRCD INTELL 3 SET	TAMPER EVIDENT VINYL	950150-2,11	1 SET
31	COVER, MEDIUM BARCODE	CHLORIDE VINYL	950150-2	1
32	PACKING (M4-70031) (HME P/N 806007)	BLACK NBR RUBBER 3 X 6 X 0.6mm	950150-2,3,11	4
33	LABEL, OVERLAMINATE 1.50 X 0.75	POLYESTER	950150-2	1
34	WASHER, FLAT (HME P/N 805009 OR EQUIVALENT)	POLY CARBONATE 2.6 X 6 X 0.5mm	950150-2,3,11	1



THIS DRAWING, THE INFORMATION, AND THE KNOW-HOW CONTAINED THEREIN IS PROPRIETARY TO HM ELECTRONICS, INC. AND MAY NOT BE USED, REPRODUCED, OR DISCLOSED TO OTHERS WITHOUT THE PRIOR WRITTEN PERMISSION OF HM ELECTRONICS, INC.		SIZE <b>B</b>	DWG NO. <b>950150</b>	REV <b>E</b>
SCALE 2/1	FILE NO. 950150E	SHEET 2 of 16		

ELECTRIC COMPONENT PARTS LIST OF HT-23 (COM2000BP)

QUANTITY	CIRCUIT NUMBER	DESCRIPTION	PARTS NAME	RATINGS	REMARKS
1	BT1	BATTERY	.	Ni-Cd (4.8V)	HME
4	C1,5,33,108	CERAMIC CAPACITOR	GRM188B11H222J	0.0022uF ±5% 50V	MURATA
2	C2,3	CERAMIC CAPACITOR	GRM21BB11C105K	1uF ±10% 16V	MURATA
4	C4,21,85,122	CERAMIC CAPACITOR	GRM1882C1H470J	47pF ±5% 50V	MURATA
2	C6,72	CERAMIC CAPACITOR	GRM1882C1H100J	10pF ±5% 50V	MURATA
6	C7,9,13,17,23,25	CERAMIC CAPACITOR	GRM21BB11E104K	0.1uF ±10% 25V	MURATA
0	C8,51	VOID	.	.	.
3	C10,81,90	CERAMIC CAPACITOR	GRM1883C1H3R0C	3pF ±0.25 pF 50V	MURATA
4	C14,22,68,110	TANTALUM CAPACITOR	ECST1CY105R	1uF ±20% 16V	PANASONIC
4	C14,22,68,110	TANTALUM CAPACITOR	F931C105MAA	1uF ±20% 16V	NICHICON (ALTERNATE)
25	C15,16,24,25,39,43,46,49,52,53,54,55,69,74,75,76,101,103,111,115,120,121,123,129,130	CERAMIC CAPACITOR	GRM188B11H103K	0.01uF ±10% 50V	MURATA
1	C18	CERAMIC CAPACITOR	GRM1882C1H471J	470pF ±5% 50V	MURATA
1	C19	CERAMIC CAPACITOR	GRM188B11H472K	0.0047uF ± 10% 50V	MURATA
1	C20	CERAMIC CAPACITOR	GRM188B11H223K	0.022uF ±10% 50V	MURATA
7	C26,29,30,31,36,38,42	ALUMINUM CAPACITOR	ECEV1CA470P	47uF ±20% 16V	PANASONIC
9	C27,32,66,78,84,93,98,99,102	CERAMIC CAPACITOR	GRM1882C1H102J	0.001uF ±5% 50V	MURATA
5	C28,37,44,45,48	TANTALUM CAPACITOR	ECST1AY106R	10uF ±20% 10V	PANASONIC
5	C28,37,44,45,48	TANTALUM CAPACITOR	F931A106MAA	10uF ±20% 10V	NICHICON (ALTERNATE)
3	C34,100,128	TANTALUM CAPACITOR	ECSTOJY475R	4.7uF ±20% 6.3V	PANASONIC
3	C34,100,128	TANTALUM CAPACITOR	F931J475MAA	4.7uF ±20% 6.3V	NICHICON (ALTERNATE)
6	C40,65,71,86,124,125	CERAMIC CAPACITOR	GRM188B11E104K	0.1uF ±10% 25V	MURATA
8	C41,50,56,59,67,77,113,117	CERAMIC CAPACITOR	GRM1882C1H150J	15pF ±5% 50V	MURATA
3	C57,79,112	CERAMIC CAPACITOR	GRM1882C1H330J	33pF ±5% 50V	MURATA
1	C58	CERAMIC CAPACITOR	GRM1882C1H120J	12pF ±5% 50V	MURATA
2	C60,62	CERAMIC CAPACITOR	GRM1884C1HR50C	0.5pF ±0.25pF 50V	MURATA
3	C61,80,82	CERAMIC CAPACITOR	GRM1884C1H1R0C	1pF ±0.25pF 50V	MURATA
1	C63	CERAMIC CAPACITOR	GRM1882C1H4R0C	4pF ±0.25pF 50V	MURATA
2	C64,83	CERAMIC CAPACITOR	GRM188R11H103K	0.01uF ±10% 50V	MURATA
3	C70,97,109	CERAMIC CAPACITOR	GRM1882C1H5R0C	5pF ±0.25pF 50V	MURATA
3	C73,87,88	CERAMIC CAPACITOR	GRM1882C1H270J	27pF ±5% 50V	MURATA
2	C89,96	CERAMIC CAPACITOR	GRM1882C1H6R0D	6pF ±0.5pF 50V	MURATA
3	C91,92,127	CERAMIC CAPACITOR	GRM1882C1H101J	100pF ±5% 50V	MURATA
2	C94,95	CERAMIC CAPACITOR	GRM1882C1H180J	18pF ±5% 50V	MURATA
2	C104,107	CERAMIC CAPACITOR	GRM1882C1H221J	220pF ±5% 50V	MURATA
2	C105,106	CERAMIC CAPACITOR	GRM188B11A224K	0.22uF ±10% 10V	MURATA
1	C114	CERAMIC CAPACITOR	GRM1882C1H220J	22pF ±5% 50V	MURATA
1	C116	CERAMIC CAPACITOR	GRM1882C1H680J	68pF ±5% 50V	MURATA
1	C118	CERAMIC CAPACITOR	GRM1882C1H681J	680pF ±5% 50V	MURATA
1	C119	CERAMIC CAPACITOR	GRM1882C1H271J	270pF ±5% 50V	MURATA
2	C131,132	CERAMIC CAPACITOR	GRM188B11A474K	0.47uF ±10%10V	MURATA
2	CV1,2	TRIMMER CAPACITOR	TZB4R200AB10	N750 ±300ppm 4.5-20pF	MURATA
6	D1,2,3,4,5,6	SCHOTTKY DIODE	MA4X713-TX	M1N	PANASONIC
1	D10	DIODE	MA3X152D-TX	MO	PANASONIC
2	D11,12	ZENER DIODE	MAZ30300L-TX	3.0L	PANASONIC
3	D13,14,16	VARIABLE DIODE	MA2Z372-TX	6N	PANASONIC
1	D15	VARIABLE DIODE	MA2X333-TX	6C	PANASONIC
1	D17	BAND-SW DIODE	MA3X075D-TX	M1X	PANASONIC
1	D18	DIODE	MA2J111-TX	1B	PANASONIC
1	FL1	MCF	10M20A	10.7MHz	HERTZ
1	FL2	CERAMIC FILTER	CFULB455KD4A	455kHz BW=±10kHz	MURATA
1	IC1	CTCSS IC	AK2345-T	.	AKM
1	IC2	OP-AMP	NJU7022M-(T1)	.	JRC
1	IC3	OP-AMP	BA728F-E2	.	ROHM
1	IC4	AF AMP	MJN2070M-(T1)	.	JRC
1	IC5	MICROCONTROLLER	PIC16LF72-I/SS	IGA-9071	MICROCHIP
1	IC6	AVR	TK11233CM	3.3V 300mA	TOKO

QUANTITY	CIRCUIT NUMBER	DESCRIPTION	PARTS NAME	RATINGS	REMARKS
1	IC7	RESET IC	RN5VL38AA-TL	3.8V	RICOH
1	IC8	AVR	S-817A12ANB	1.2V 20mA	SII
2	IC9,10	PLL IC	SM5170AV	.	NPC
1	IC11	IF IC	TK83361M	.	TOKO
1	J1	HOUSING & TERMINAL	.	.	.
1	J2	DIN CONNECTOR	TCS0254-01-1201	DIN 5P	SANSEI
1	J3	HOUSING & TERMINAL	.	.	.
1	JP1	CONNECTOR	53014-0310	3P 2.0mm PITCH	MOLEX
1	JP2	CONNECTOR	5045-04A	4P 2.5mm PITCH	MOLEX
1	JP3	CONNECTOR	B5B-ZR	5P 1.5mm PITCH	JST
1	JP4	CONNECTOR	5045-02A	2P 2.5mm PITCH	MOLEX
5	L1,3,5,6,16	FIXED INDUCTOR	LQH31MN4R7K01	4.7uH ±10% 120mA 1.700HM	MURATA
2	L2,L4	FIXED INDUCTOR	LQH31CN4R7M01	4.7uH ±20% 340mA 0.650HM	MURATA
1	L7	FIXED INDUCTOR	LQW31HN84NJ01	84nH ±5% Q>=60	MURATA
1	L8	TUNABLE INDUCTOR	RS-563	.	DENKEN
2	L9,18	FIXED INDUCTOR	LQH31MN1R5J01	1.5uH ±5% Q>=35	MURATA
1	L10	TUNABLE INDUCTOR	RS-597	.	DENKEN
1	L11	AIR INDUCTOR	RL-354	.	DENKEN
1	L12	AIR INDUCTOR	RL-355	.	DENKEN
2	L13,14	FIXED INDUCTOR	LQW2BHN22J01	220nH ±5% Q>=35	MURATA
1	L15	AIR INDUCTOR	RL-356	.	DENKEN
1	L17	FIXED INDUCTOR	LQH31MNR68K01	0.68uH ±10% Q>=30	MURATA
1	L19	TUNABLE INDUCTOR	RS-562	.	DENKEN
1	L20	FIXED INDUCTOR	LQH31MN3R3J01	3.3uH ±5% Q>=35	MURATA
1	L21	FIXED INDUCTOR	LQW2BHN33NJ01	33nH ±5% Q>=40	MURATA
1	L22	FIXED INDUCTOR	LQW2BHN10J01	100nH ±5% Q>=40	MURATA
1	LED1	LED	GL1UR33	RED / SIDE EMIT TYPE	SHARP
3	Q1,3,9	TRANSISTOR	2SD601A(R,S)-TX	ZR,ZS	PANASONIC
3	Q2,4,8	TRANSISTOR	2SA1298(O,Y)TE85R	IO,IY	TOSHIBA
6	Q5,10,11,12,14,17	TRANSISTOR	2SC2404(D)-TX	UD	PANASONIC
2	Q6,7	TRANSISTOR	2SC3707-TX	2X	PANASONIC
1	Q13	TRANSISTOR	2SC2644 2SC2570A	C2644	TOSHIBA NEC
1	Q15	FET	2SK198(P)-TX	10P	PANASONIC
1	Q16	FET	2SK302(Y)TE85L	TY	TOSHIBA
5	R1,6,99,104,126	RESISTOR	ERJ3GSYJ392V	3.9k OHM ±5% 1/16W	PANASONIC
2	R2,11	RESISTOR	ER13GSYOR00V	0 OHM	PANASONIC
3	R3,67,90	RESISTOR	ERJ3GSYJ223V	22k OHM ±5% 1/16W	PANASONIC
1	R4	RESISTOR	ERJ3GSYJ682V	6.8k OHM ±5% 1/16W	PANASONIC
5	R5,8,13,28,56	RESISTOR	ERJ3GSYJ334V	330k OHM ±5% 1/16W	PANASONIC
0	R7,21	VOID	.	.	.
1	R9	RESISTOR	ERJ3GSYJ474V	470k OHM ±5% 1/16W	PANASONIC
5	R10,49,111,112,120	RESISTOR	ERJ3GSYJ105V	1M OHM ±5% 1/16W	PANASONIC
1	R12	RESISTOR	ERJ3GSYJ684V	680k OHM ±5% 1/16W	PANASONIC
17	R14,15,16,32,33,36,38,39,40,41,42,43,50,81,116,136,137	RESISTOR	ERJ3GSYJ104V	100k OHM ±5% 1/16W	PANASONIC
11	R17,27,30,53,63,69,71,86,119,134,135	RESISTOR	ERJ3GSYJ102V	1k OHM ±5% 1/16W	PANASONIC
2	R18,123	RESISTOR	ERJ3GSYJ394V	390k OHM ±5% 1/16W	PANASONIC
1	R19	RESISTOR	ERJ3GSYJ184V	180k OHM ±5% 1/16W	PANASONIC
15	R20,25,26,34,47,48,55,66,74,78,89,95,115,122,129	RESISTOR	ERJ3GSYJ103V	10k OHM ±5% 1/16W	PANASONIC
2	R21,79	RESISTOR	ERJ3GSYJ224V	220k OHM ±5% 1/16W	PANASONIC
1	R22	RESISTOR	ERJ3GSYJ563V	56k OHM ±5% 1/16W	PANASONIC
4	R23,29,61,80	RESISTOR	ERJ3GSYJ333V	33k OHM ±5% 1/16W	PANASONIC
1	R24	RESISTOR	ERJ3GSYJ183V	18k OHM ±5% 1/16W	PANASONIC
1	R31	RESISTOR	ERJ3GSYJ393V	39k OHM ±5% 1/16W	PANASONIC
2	R35,37	RESISTOR	ERJ3GSYJ823V	82k OHM ±5% 1/16W	PANASONIC
4	R44,101,108,132	RESISTOR	ERJ3GSYJ100V	10 OHM ±5% 1/16W	PANASONIC
2	R45,114	RESISTOR	ERJ3GSYJ123V	12k OHM ±5% 1/16W	PANASONIC
1	R46	RESISTOR	ERJ3GSYJ274V	270k OHM ±5% 1/16W	PANASONIC
1	R51	RESISTOR	ERJ3GSYJ152V	1.5k OHM ±5% 1/16W	PANASONIC

THIS DRAWING, THE INFORMATION, AND THE KNOW-HOW CONTAINED THEREIN IS PROPRIETARY TO HM ELECTRONICS, INC. AND MAY NOT BE USED, REPRODUCED, OR DISCLOSED TO OTHERS WITHOUT THE PRIOR WRITTEN PERMISSION OF HM ELECTRONICS, INC.

SIZE DWG NO. **950150** REV **E**

SCALE 2/1 FILE NO. 950150E SHEET 4 of 16

QUANTITY	CIRCUIT NUMBER	DESCRIPTION	PARTS NAME	RATINGS	REMARKS
5	R52,75,76,96,97	RESISTOR	ERJ3GSYJ271V	270 OHM ±5% 1/16W	PANASONIC
2	R54,110	RESISTOR	ERJ3GSYJ472V	4.7k OHM ±5% 1/16W	PANASONIC
8	R57,58,59,82,83,84,127,128	RESISTOR	ERJ3GSYJ101V	100 OHM ±5% 1/16W	PANASONIC
2	R60,85	RESISTOR	ERJ3GSYJ822V	8.2k OHM ±5% 1/16W	PANASONIC
5	R64,72,87,93,118	RESISTOR	ERJ3GSYJ154V	150k OHM ±5% 1/16W	PANASONIC
4	R65,77,88,98	RESISTOR	ERJ3GSY471V	470 OHM ±5% 1/16W	PANASONIC
4	R68,73,91,94	RESISTOR	ERJ3GSYJ473V	47k OHM ±5% 1/16W	PANASONIC
2	R70,92	RESISTOR	ERJGSY180V	18 OHM ±5% 1/16W	PANASONIC
6	R100,105,106,107,117,125	RESISTOR	ERJ3GSYJ222V	2.2k OHM ±5% 1/16W	PANASONIC
1	R102	RESISTOR	ERJ3GSYJ221V	220 OHM ±5% 1/16W	PANASONIC
1	R103	RESISTOR	ERJ3GSYJ562V	5.6k OHM ±5% 1/16W	PANASONIC
1	R109	RESISTOR	ERJ3GSYJ153V	15k OHM ±5% 1/16W	PANASONIC
1	R113	RESISTOR	ERJ3GSYJ332V	3.3k OHM ±5% 1/16W	PANASONIC
2	R124,130	RESISTOR	ERJ3GSYJ561V	560 OHM ±5% 1/16W	PANASONIC
1	R131	RESISTOR	ERJ3GSYJ151V	150 OHM ±5% 1/16W	PANASONIC
1	R133	RESISTOR	ERJ3GSYJ182V	1.8k OHM ±5% 1/16W	PANASONIC
2	SW1,2	MICRO-SWITCH	SS-01GL	.	OMRON
1	SW3	DIP SWITCH	SSV08	8P	OTAX
1	SW4	DIP SWITCH	SSV04	4P	OTAX
0	TP1,2,3	TEST POINT	.	.	ON BOARD (PCB)
1	VR1	POTENTIOMETER	RK0971111	50k OHM(A) WITH SW	ALPS
1	VR2	POTENTIOMETER	PVM4A503A01	50k OHM(B)	MURATA
1	VR3	POTENTIOMETER	PVM4A203A01	20k OHM(B)	MURATA
1	CE-092	CABLE ASSEMBLY	.	.	.
1	J1	HOUSING	5051-02	2P	MOLEX
2	.	TERMINAL	5159TL	.	MOLEX
1	.	COAXIAL CABLE	1.5DQEV	55mm	FUJIKURA
1	CE-093	CABLE ASSEMBLY	.	4P	.
1	J3	HOUSING	5051-04	.	MOLEX
4	.	TERMINAL	5159TL	.	MOLEX
1	.	WIRE	UL1007 AWG#26 BROWN	BUNCH WIRE 40mm	.
1	.	WIRE	UL1007 AWG#26 GREEN	BUNCH WIRE 45mm	.
1	.	WIRE	UL1007 AWG#26 ORANGE	BUNCH WIRE 50mm	.
1	.	WIRE	UL1007 AWG#26 YELLOW	BUNCH WIRE 45mm	.
1	CE-128	CABLE ASSEMBLY	.	.	.
5	.	HOUSING	5P-SZN	5P	JST
1	.	TERMINAL	SZN-003T-0.7K	.	JST (USED FOR 5P-SZN)
1	.	HOUSING	ZHR-5	.	JST
5	.	TERMINAL	SZH-003T-P0.5	.	JST (USED FOR ZHR-5)
1	.	WIRE	UL1571 IRRAX V2 #28 BLACK	30mm	SEI
1	.	WIRE	UL1571 IRRAX V2 #28 RED	30mm	SEI
1	.	WIRE	UL1571 IRRAX V2 #28 BLUE	30mm	SEI
1	.	WIRE	UL1571 IRRAX V2 #28 ORANGE	30mm	SEI
1	.	WIRE	UL1571 IRRAX V2 #28 GREEN	30mm	SEI
1	CE-135	CABLE ASSEMBLY	.	.	.
1	.	HOUSING	51004-0300	3P	MOLEX
1	.	TERMINAL	50011-8100	.	MOLEX
1	.	WIRE	UL1571 IRRAX V2 #28 BROWN	50mm	SEI
1	.	WIRE	UL1571 IRRAX V2 #28 RED	75mm	SEI
1	.	WIRE	UL1571 IRRAX V2 #28 BLACK	65mm	SEI
0	X1	VOID	.	.	.
1	X2	CRYSTAL	HT-39	3.6864MHz/1S-281	MBRTZPCB 2 PIECE / SUB PCB 2 PIECE
1	X3	CRYSTAL	XR-047	10.245MHz	HERTZ
1	X4	DISCRIMINATOR	CDA455C49	455KHz	TOKO
1	X5	CRYSTAL	XA10353	12.8MHz UM-5 WITH SHEET	HERTZ
1	PCB	ARRAY PCB	E3-70170	t1.6 FR-4	.
1	.	LED SPACER	LH-5-7	LENGTH 7mm	SHINAGAWA KOUSSHOU
1	.	DESICCANT	FC-732	.	SEI
1	.	ADHESIVE	KE3475T	.	SHIN-ETSU



TABLE 1	
K NUMBER	REV LETTER
950150	*

\*SEE WORK ORDER FOR CURRENT REVISION FOR DATA ENTRY



TABLE 2 FREQUENCY SWITCH SETTINGS

SW1 SETTINGS									
TRANSMIT					RECEIVE				
FREQ.	1	2	3	4	FREQ.	5	6	7	8
M2	OFF	ON	OFF	ON	M1	OFF	OFF	ON	ON
M6	ON	OFF	OFF	ON	M3	ON	OFF	OFF	ON
M7	OFF	OFF	ON	OFF	M4	OFF	ON	OFF	OFF
M9	ON	OFF	ON	OFF	M5	ON	ON	OFF	ON
M11	OFF	OFF	OFF	ON	M8	ON	OFF	OFF	OFF
M12	ON	ON	ON	OFF	M23	OFF	OFF	OFF	OFF
M14	ON	ON	OFF	OFF	M25	OFF	OFF	OFF	ON
M15	OFF	ON	OFF	OFF	M27	ON	OFF	ON	OFF
M16	ON	ON	ON	ON	M29	OFF	OFF	ON	OFF
M17	OFF	ON	ON	ON	M31	ON	ON	ON	OFF
M18	ON	OFF	ON	ON	M37	ON	OFF	ON	ON
M19	OFF	OFF	ON	ON	M38	ON	ON	ON	ON
M20	ON	ON	OFF	ON	M39	OFF	ON	ON	ON
M21	OFF	OFF	OFF	OFF	M40	ON	ON	OFF	OFF
M24	OFF	ON	ON	OFF	M41	OFF	ON	OFF	ON
M26	ON	OFF	OFF	OFF	M45	OFF	ON	ON	OFF



TABLE 3 TONE SWITCH SETTINGS

TONE SET #	SW4 SETTINGS		
	1	2	3
7	OFF	OFF	OFF
8	ON	OFF	OFF
9	OFF	ON	OFF
10	ON	ON	OFF
11	OFF	OFF	ON



TABLE 4 LATCH FEATURE SWITCH SETTINGS

LATCH FEATURE	SW4 SETTINGS #4
ENABLED	ON
DISABLED	OFF

4

3

2

1

D

D

C

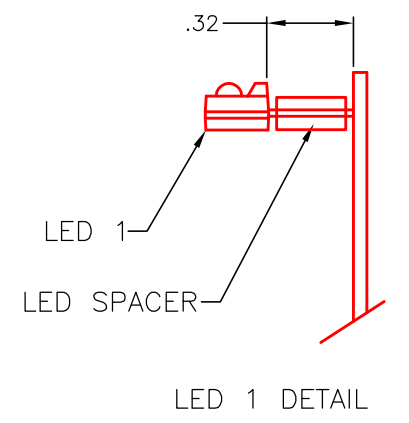
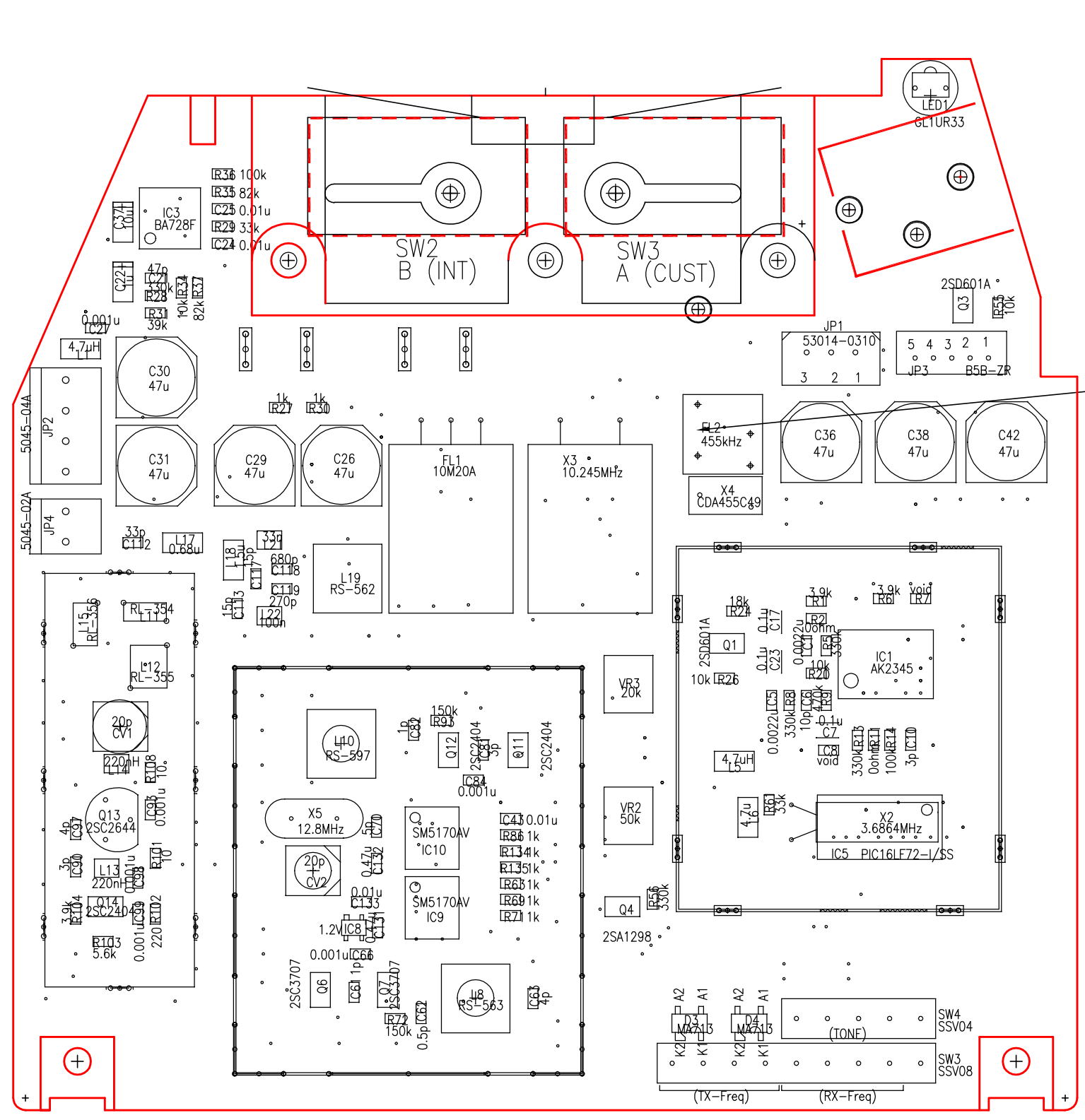
C

B

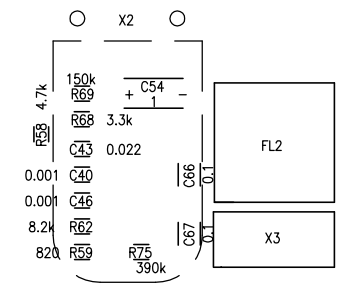
B

A

A



DETAIL A  
X2 REMOVED FOR CLARITY



COMPONENT SIDE

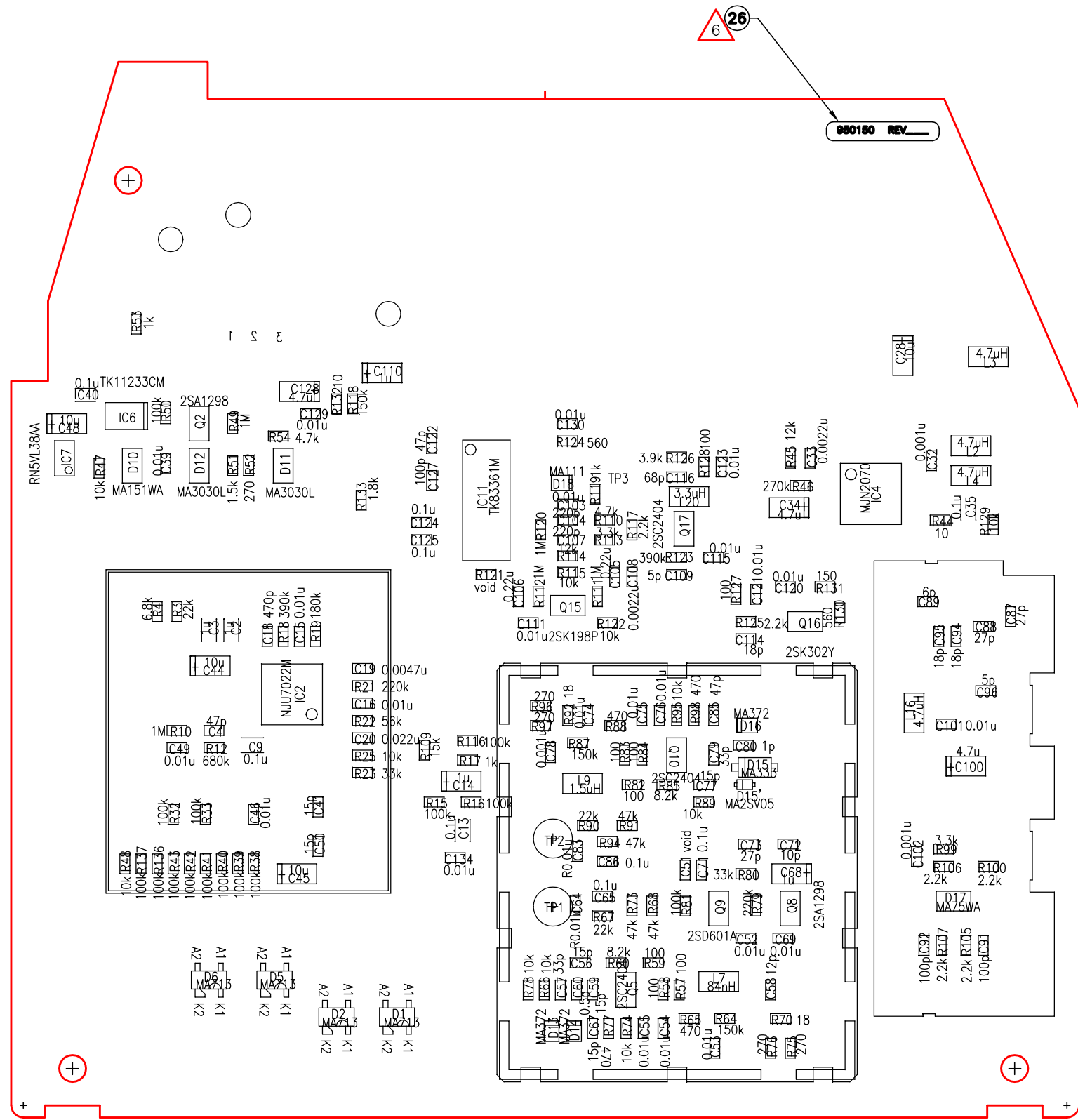
THIS DRAWING, THE INFORMATION, AND THE KNOW-HOW CONTAINED THEREIN IS PROPRIETARY TO HM ELECTRONICS, INC. AND MAY NOT BE USED, REPRODUCED, OR DISCLOSED TO OTHERS WITHOUT THE PRIOR WRITTEN PERMISSION OF HM ELECTRONICS, INC.		SIZE <b>B</b>	DWG NO. <b>950150</b>	REV <b>E</b>
SCALE NONE	FILE NO. 950150E	SHEET 6	of 16	

4

3

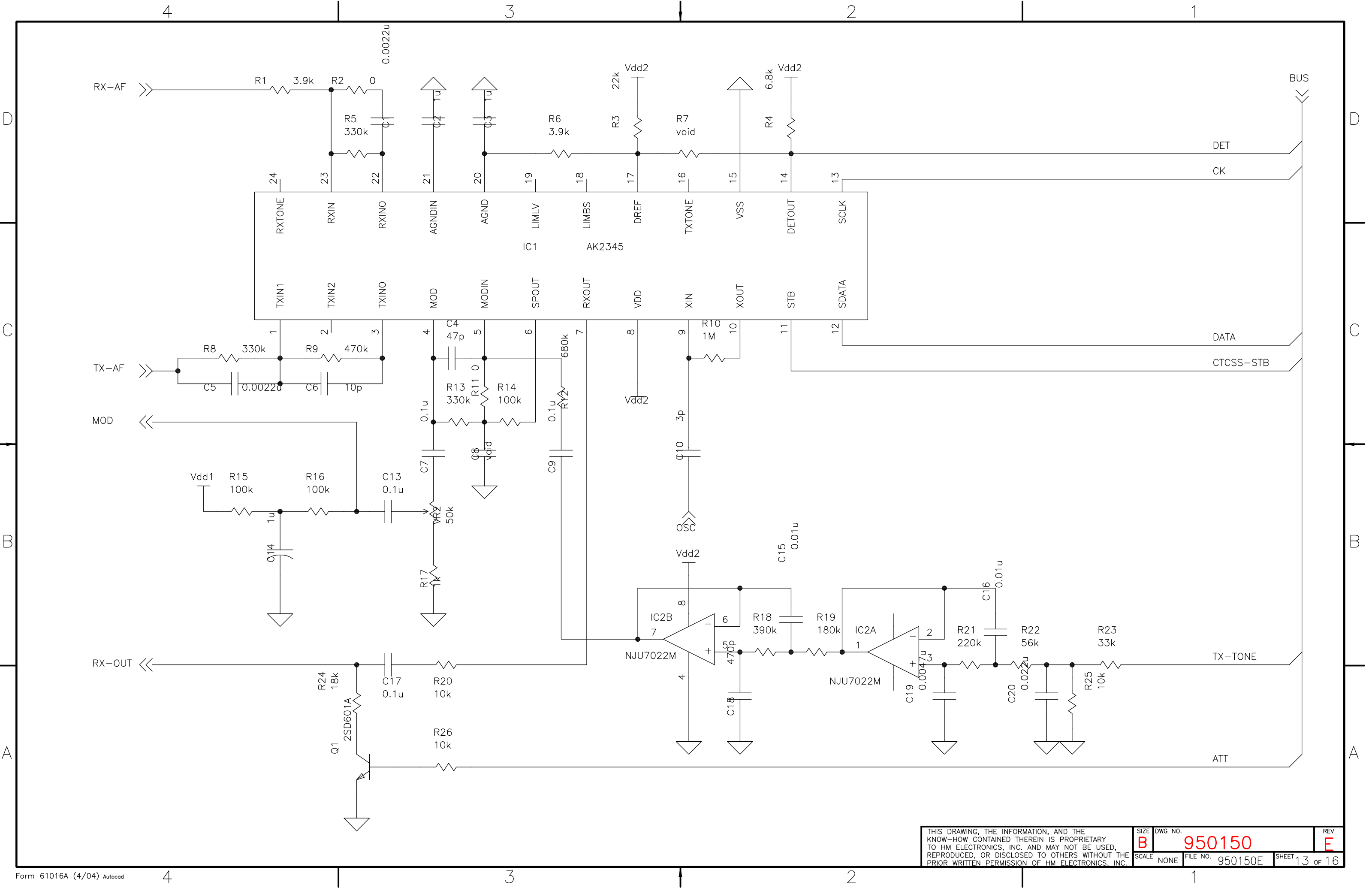
2

1



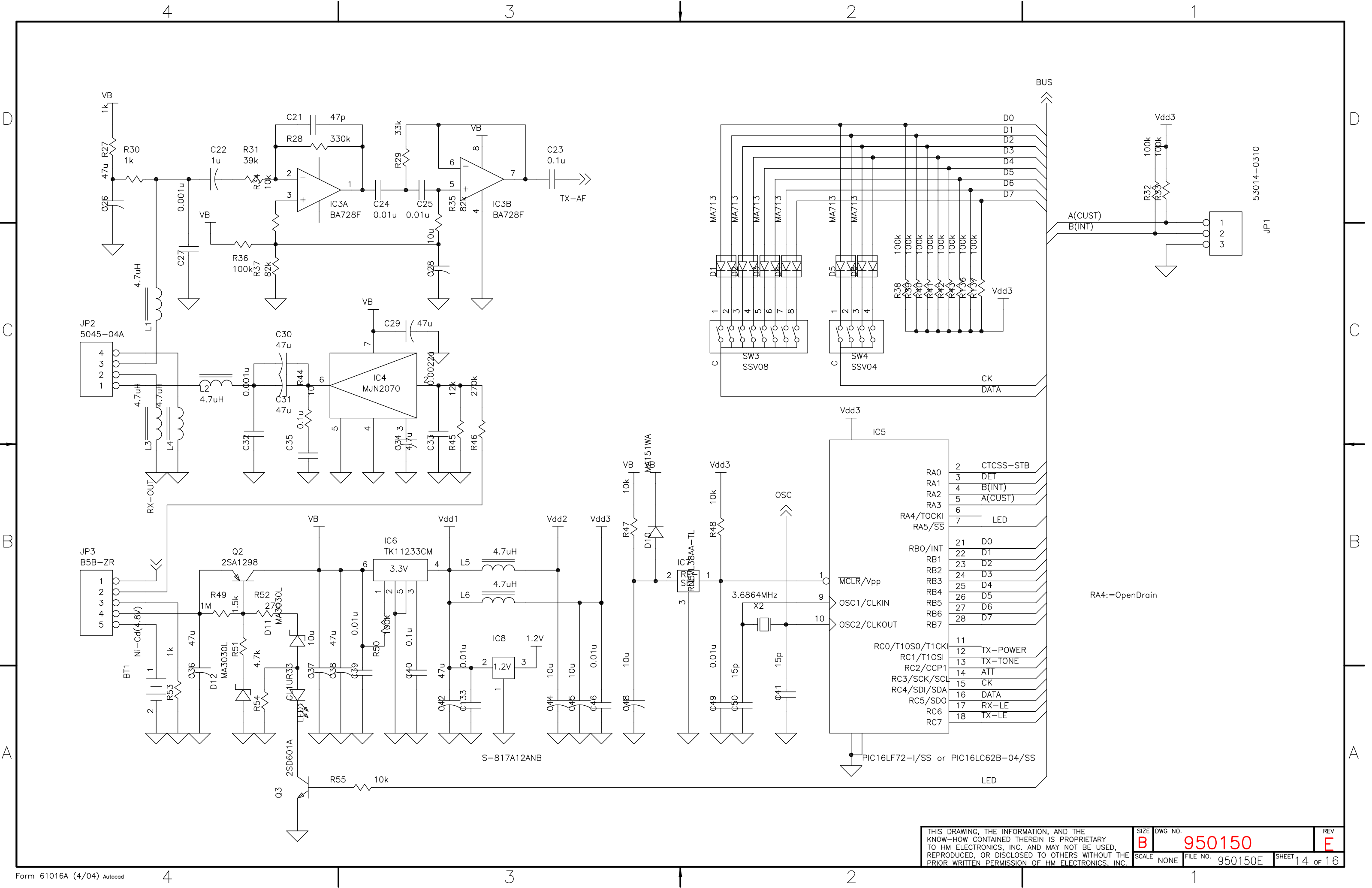
SOLDER SIDE

THIS DRAWING, THE INFORMATION, AND THE KNOW-HOW CONTAINED THEREIN IS PROPRIETARY TO HM ELECTRONICS, INC. AND MAY NOT BE USED, REPRODUCED, OR DISCLOSED TO OTHERS WITHOUT THE PRIOR WRITTEN PERMISSION OF HM ELECTRONICS, INC.		SIZE <b>B</b>	DWG NO. <b>950150</b>	REV <b>E</b>
SCALE NONE	FILE NO. 950150E	SHEET 7		of 16

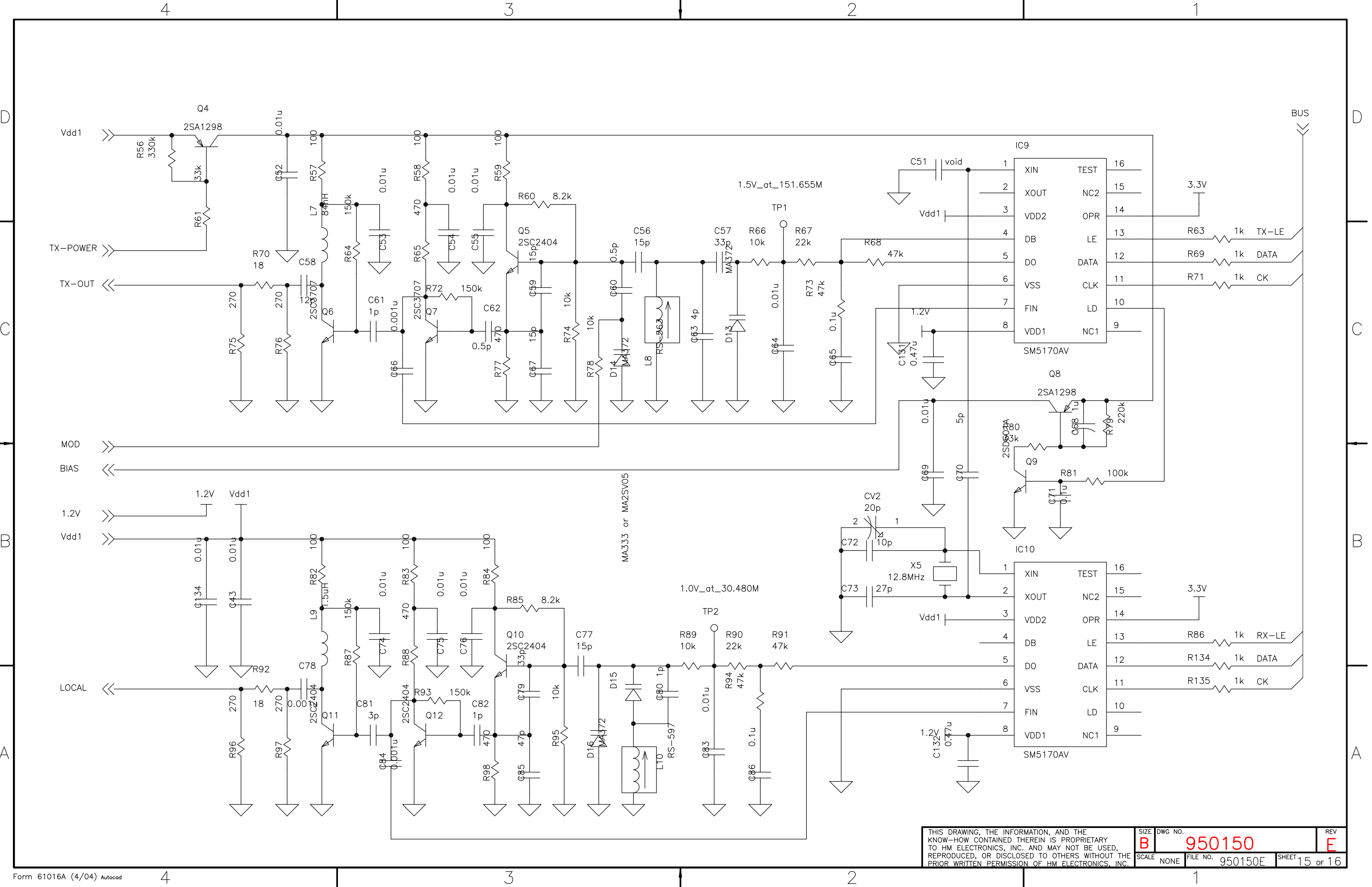


THIS DRAWING, THE INFORMATION, AND THE KNOW-HOW CONTAINED THEREIN IS PROPRIETARY TO HM ELECTRONICS, INC. AND MAY NOT BE USED, REPRODUCED, OR DISCLOSED TO OTHERS WITHOUT THE PRIOR WRITTEN PERMISSION OF HM ELECTRONICS, INC.		SIZE <b>B</b>	DWG. NO. <b>950150</b>	REV <b>E</b>
SCALE NONE	FILE NO. 950150E	SHEET 13 of 16		



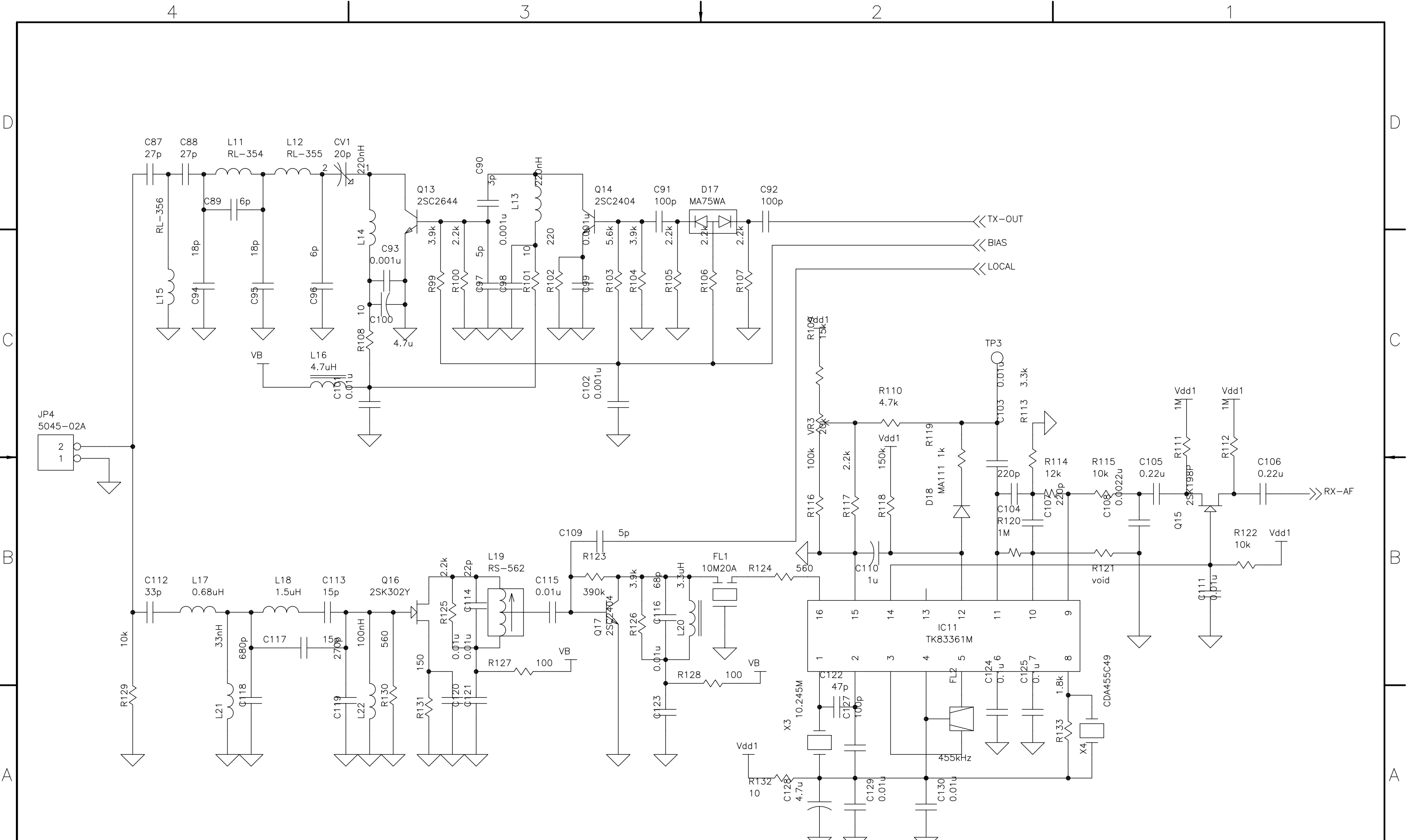


THIS DRAWING, THE INFORMATION, AND THE KNOW-HOW CONTAINED THEREIN IS PROPRIETARY TO HM ELECTRONICS, INC. AND MAY NOT BE USED, REPRODUCED, OR DISCLOSED TO OTHERS WITHOUT THE PRIOR WRITTEN PERMISSION OF HM ELECTRONICS, INC.		SIZE <b>B</b>	DWG NO. <b>950150</b>	REV <b>E</b>
SCALE NONE	FILE NO. 950150E	SHEET 14 of 16		



THIS DRAWING, THE INFORMATION, AND THE KNOW-HOW CONTAINED THEREIN IS PROPRIETARY TO HM ELECTRONICS, INC. AND MAY NOT BE USED, REPRODUCED, OR DISCLOSED TO OTHERS WITHOUT THE PRIOR WRITTEN PERMISSION OF HM ELECTRONICS, INC.		SIZE <b>B</b>	DWG. NO. <b>950150</b>	REV <b>E</b>
SCALE NONE	FILE NO. 950150E	SHEET 15 of 16		





THIS DRAWING, THE INFORMATION, AND THE KNOW-HOW CONTAINED THEREIN IS PROPRIETARY TO HM ELECTRONICS, INC. AND MAY NOT BE USED, REPRODUCED, OR DISCLOSED TO OTHERS WITHOUT THE PRIOR WRITTEN PERMISSION OF HM ELECTRONICS, INC.		SIZE <b>B</b>	DWG. NO. <b>950150</b>	REV <b>E</b>
SCALE NONE	FILE NO. 950150E	SHEET 16 of 16		