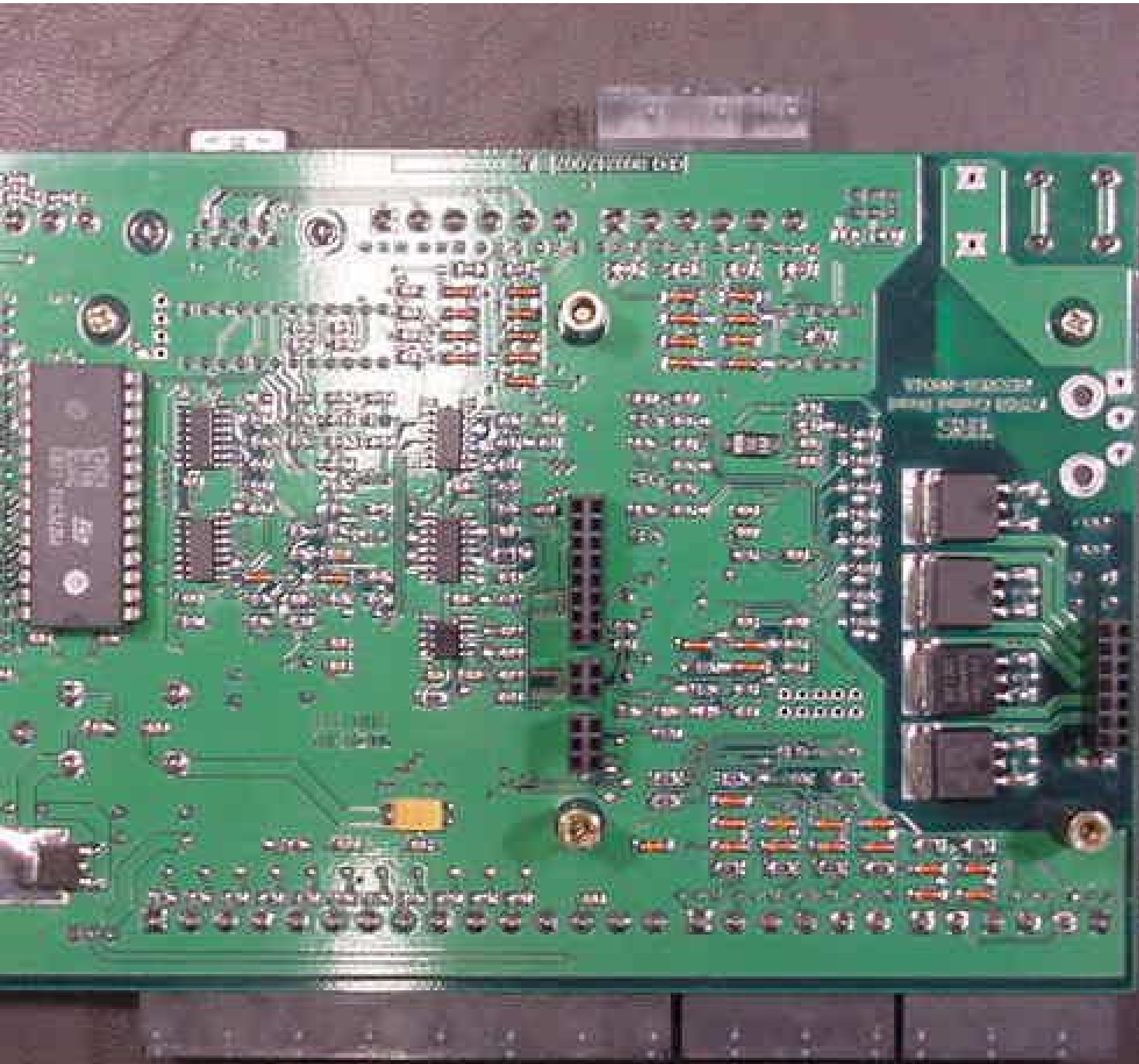


TI Main Board Side 1



TI main Board Side 2



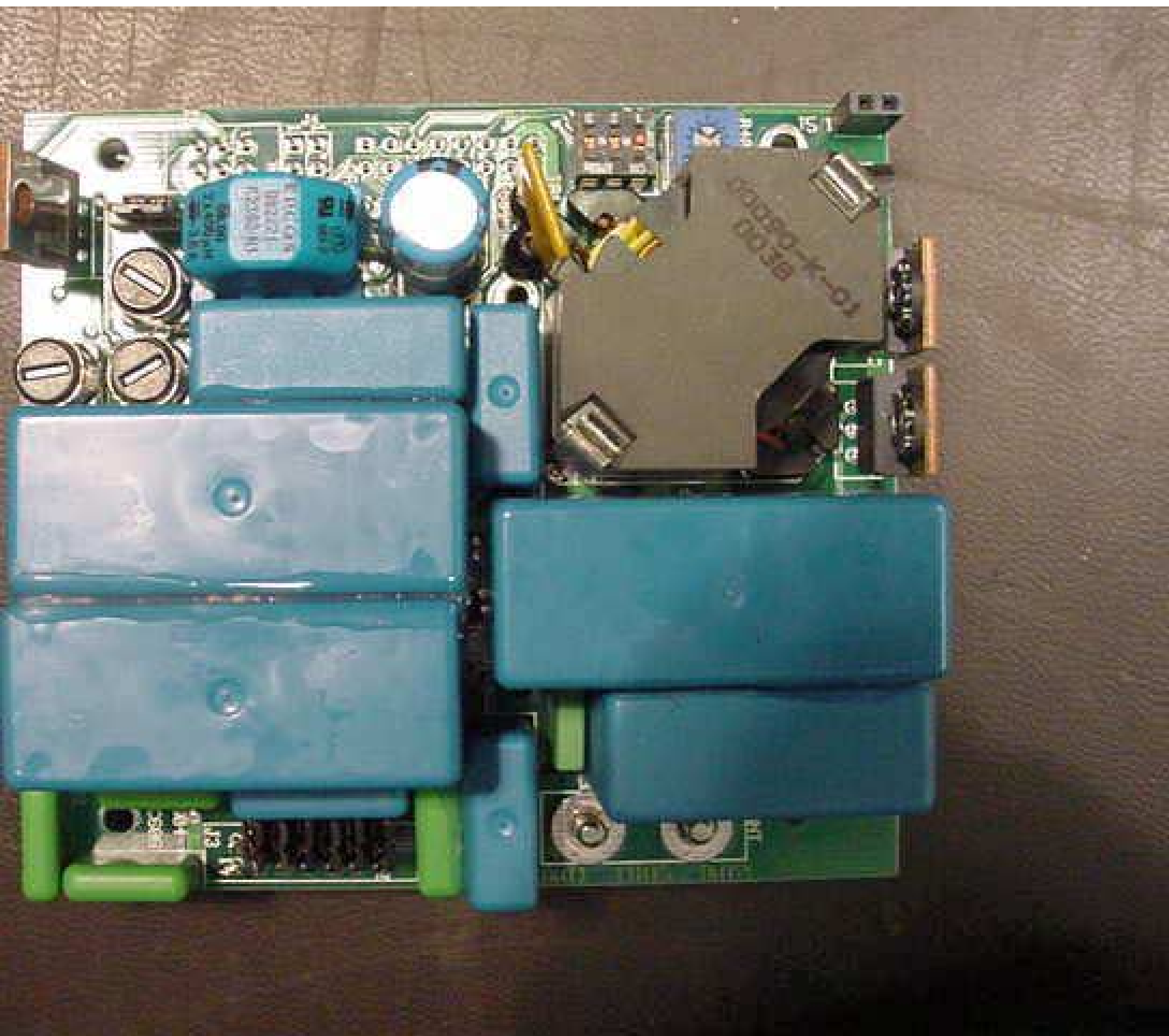
TI main Board Side 2 with RFM removed



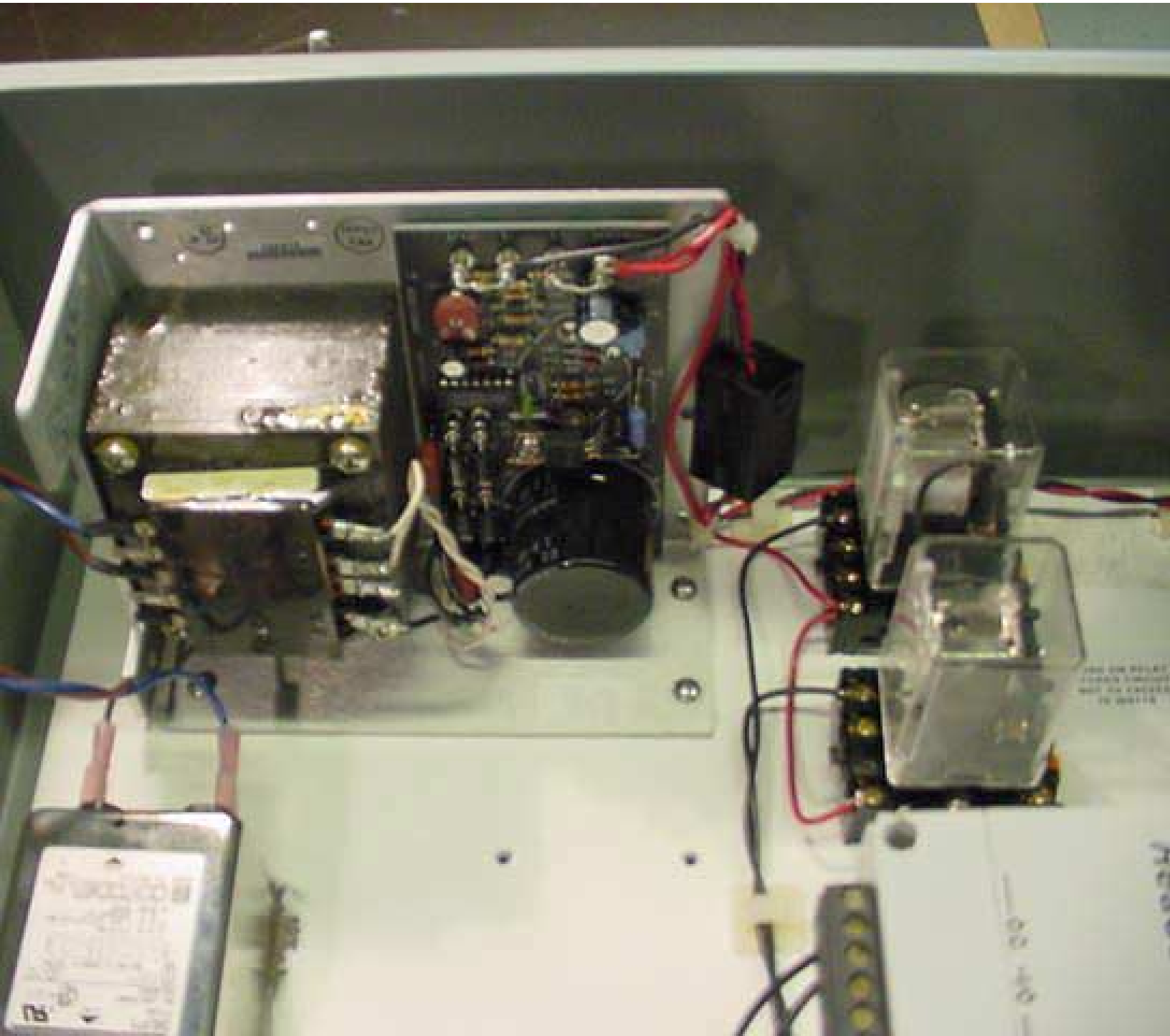
TI RFM Board Side 1



TI RFM Board Side 2 with heatsink



TI RFM Board Side 2 without heatsinks.
Blue covers are potted components and cannot be removed.



Closeup of 24 Vdc Supply and Relays

Closeup of Fuse and EMI Filters





TIRIS Technology by
Texas Instruments
Reader S251B



Power 1 Full General Purpose Input / Output
Power Range Setting

0V -10

RS232

RS422 / 485

RS422
RS485
DAT



CTL Status

- EM
- TX Active
- Base OK

- RF Power Output Adj.
- EM / Sync Level Adj.
- L ->
- OK
- L ->

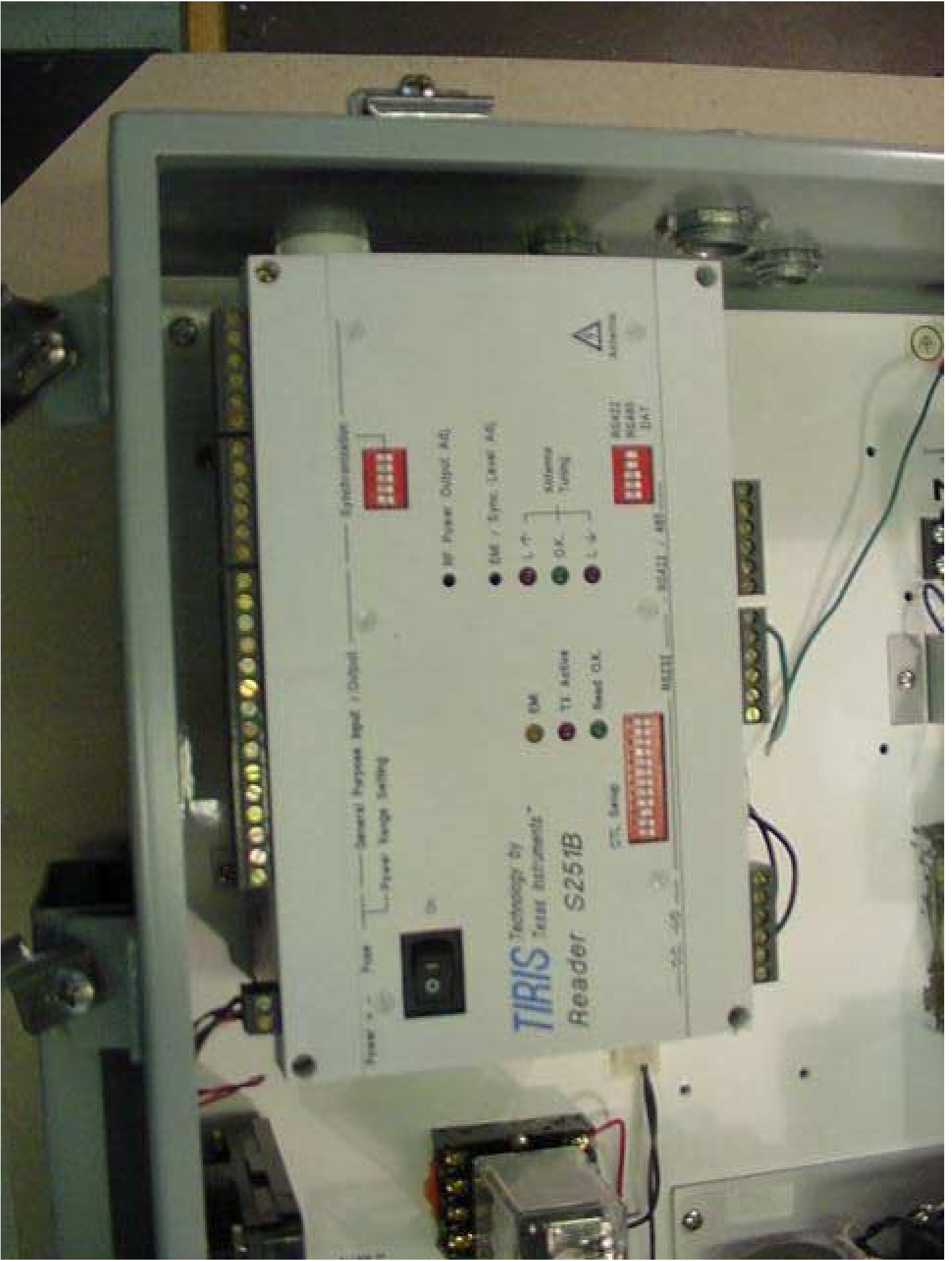


Antenna Tuning



00000

Closeup of S251B RS232 and Relay Hookup



Power Off On

General Purpose Input / Output
Power Supply Setting

TIRIS Technology by
Telex Instruments™
Reader S251B

- EM
- TX active
- Read O.K.

- RF Power Output A/D
- EM / Sync Drive A/D
- L ↑
- O.K.
- L ↓

Antenna
Tuning

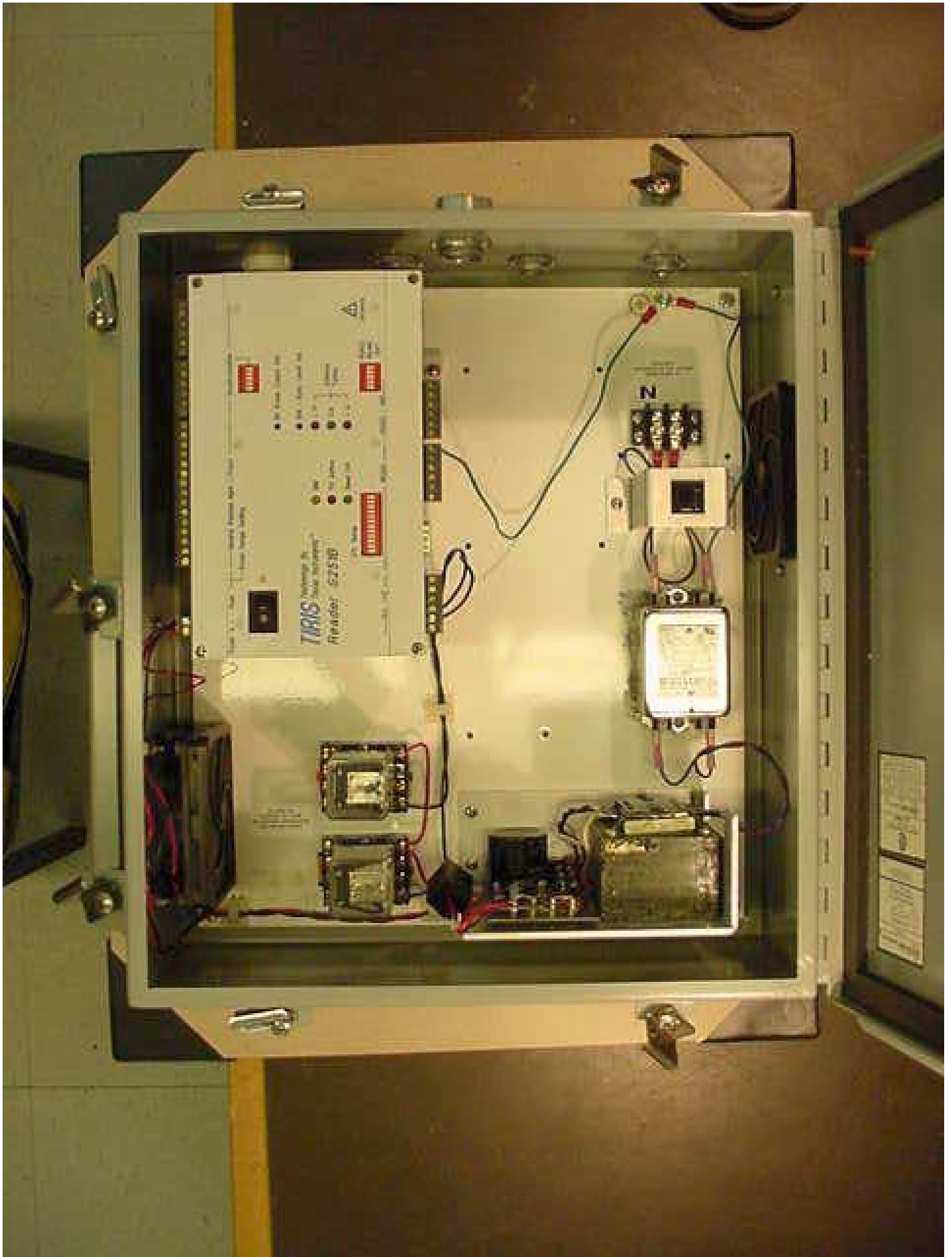
CTC Error

Synchronization

REAR
REAR
DAY



Closeup of TIRIS S251B Reader



VACS Interior #3