

OPERATING INSTRUCTIONS

INTRODUCTION

The Air Thunder Helicopter can fly up to 15 meters! Easy-to-use pistol grip controller features digital proportional control. Before take off, read the instruction manual to ensure you have a safe flight!

- C. Pull the trigger completely backward to fly higher. (See Diagram 10)
 D. The transmitter features a display panel that shows the amount of power given to the helicopter. (See Diagram 10)

LANDING THE HELICOPTER

- E. Release the trigger slowly to lower and land the helicopter. Do not abruptly release the trigger as the helicopter may sustain damage when hitting the ground too quickly. (See Diagram 11)

STOP OPERATION

- F. To stop the helicopter, release the trigger.



Diagram 10



Diagram 11

CONTENTS

- 1.1 Air Thunder RC Helicopter
 2.1 Launch Pad Charging Station
 3.1 Controller
 4.1 Instruction Manual

Battery Charging

BATTERY INSTALLATION / CHARGER

1. Unscrew to open the battery lids of the charger. (See Diagram 1)
2. Install 8 D-cell batteries into the battery compartments. Make sure that the (+) and (-) polarities are positioned properly. (See Diagram 2)
3. Replace and screw to lock the battery lids.

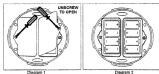


Diagram 1

Diagram 2

BATTERY CHARGING OF THE HELICOPTER

1. Ensure the "ON/OFF" switch is at the "OFF" position of the helicopter and the charger.
2. Lift up the charging plug of the charger. (See Diagram 3) and plug the charging socket of the helicopter into the charging plug. (See Diagram 4)
3. Slide the "ON/OFF" switch of the charger to the "ON" position. (See Diagram 5)

PERFORMANCE TIPS

1. If the helicopter can not be launched properly or if it descends slowly during flight, it is time to recharge.
2. The transmission range is approximately 70 meters. Do not fly on windy days as the helicopter can be knocked out of range. When the helicopter is out of range, it cannot be controlled.
3. In low wind conditions on a full charge, the helicopter can fly from 2 to 3 minutes. If the flight time is less than 2 to 3 minutes, replace the 8 D batteries in the charger with new ones and recharge the helicopter.
4. To conserve battery power, switch off the helicopter, the transmitter, and the charger when they are not in use.
5. Always use alkaline batteries for the transmitter and the charger.
6. Remove exhausted batteries from the transmitter and the charger as they will adversely affect the performance.
7. Do not release the trigger suddenly when the helicopter is flying, as the rotors will stop, causing the helicopter to fall immediately. Always release the trigger slowly to land and release the trigger completely for the helicopter to come to a full stop.

SAFETY PRECAUTIONS

1. Launch the helicopter in an open area away from people, animals, or trees. Be sure the helicopter is at least 4 meters (radius) or 15 feet clear in all directions prior to launch.
2. Keep your fingers, hair or eyes away from the moving rotor.
3. ALWAYS fly the helicopter on a warm and sunny day with no wind. Flying in poor weather conditions when it is raining, windy, or snowing will decrease the ability to control the helicopter.
4. Fly in temperatures between 10°C and 40°C. Flying the helicopter outside of the suggested temperature range will affect performance and can damage the helicopter.
5. Do not launch the helicopter when the rotor is damaged or broken. It may lead to damage or injury.
6. Make sure the "ON/OFF" switch of the helicopter is at the "OFF" position when it is not in use.

- The power indicator will flash during charging and stop flashing when the battery is fully charged. (See Diagram 6)
- The rechargeable battery pre-installed in the helicopter is not charged. Please charge it for 6 minutes for the first two times of flight. Subsequent charges will only require 4 minutes.

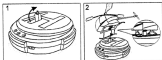


Diagram 3

Diagram 4

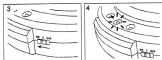


Diagram 5

Diagram 6

BATTERY INSTALLATION: TRANSMITTER

- Unscrew to open the battery lid. (See Diagram 3)
- Insert a new 9V battery. (See Diagram 7)
- Replace and screw to lock the battery lid.



Diagram 7

Operation

PREPARE FOR TAKEOFF

- Unplug the helicopter from the charger.
- Screw the antenna onto the top of the transmitter and extend to full length.
- Slide the "ON/OFF" switch of the helicopter to the "ON" position. (See Diagram 8)
- Make sure the trigger of the transmitter is released.
- Slide the "ON/OFF" switch of the transmitter to the "ON" position. The power indicator will light up when the power is on. (See Diagram 9)

LAUNCHING THE HELICOPTER

- Make sure the helicopter is placed on an open and even surface prior to launch.
- Pull the trigger of the transmitter backward half way to launch the helicopter.

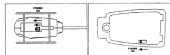


Diagram 8

Diagram 9

- Electrical, CB interference, mobile phones, air conditioning, elevators and steel girders in buildings will affect the operation of the helicopter.
- Do not leave the helicopter or the transmitter near sources of heat or in direct sunlight for long periods of time.
- Make sure the helicopter is at a complete stop when retrieving.
- The helicopter will be hot after continuous flight! Rest the helicopter for a minimum of 10 minutes after 3 consecutive flights to cool down.
- Do not try to retrieve the helicopter if it falls into places difficult to access or places which pose risk. Avoid retrieving the helicopter if it falls into water, slopes, high altitudes (cliffs, trees, rooftops), electric posts, etc. Do not put yourself at dangerous positions. Be sure to use common sense and caution.

CAUTION ON BATTERY

- Do not charge the battery when the charging connectors are wet.
- Do not charge the battery when it is hot, wet or shows signs of leakage or corrosion.
- Explosion may happen if the battery is exposed to flame!
- Do not disassemble the battery.
- The rechargeable battery can be charged for much longer period without harm. However, it is recommended to unplug the charger if it will no be used for several days.
- Remove the battery from the transmitter and the charging perform when they are not in use for an extended period of time.
- Do not mix old and new batteries.
- Do not mix alkaline, standard, rechargeable batteries, or different types of batteries.
- Battery installation should be done by an adult.
- Non-rechargeable batteries are not to be recharged.
- Rechargeable batteries are to be removed from the toy before being charged (if removable).
- Rechargeable batteries are only to be charged under adult supervision (if removable).

- Only batteries of the same or equivalent type as recommended are to be used.
- Batteries are to be inserted with the correct polarity.
- Exhausted batteries are to be removed from the toy.
- The supply terminals are not to be short-circuited.
- Use only the charger supplied with the Air Thunder Helicopter. Do not use other sources to charge the Air Thunder Helicopter.

ATTENTION PARENTS:

It is recommended that this toy and all accessories be periodically examined for potential hazards and that any potentially hazardous parts be repaired or replaced.

FOC NOTE: THE MANUFACTURER IS NOT RESPONSIBLE FOR ANY RADIO OR TV INTERFERENCE CAUSED BY UNAUTHORIZED MODIFICATIONS TO THIS EQUIPMENT. SUCH MODIFICATIONS COULD VOID THE USER'S AUTHORITY TO OPERATE THE EQUIPMENT.

© 2003 SCIENTIFIC TOYS, LTD. ALL RIGHTS RESERVED. PRINTED IN CHINA. OIM 000