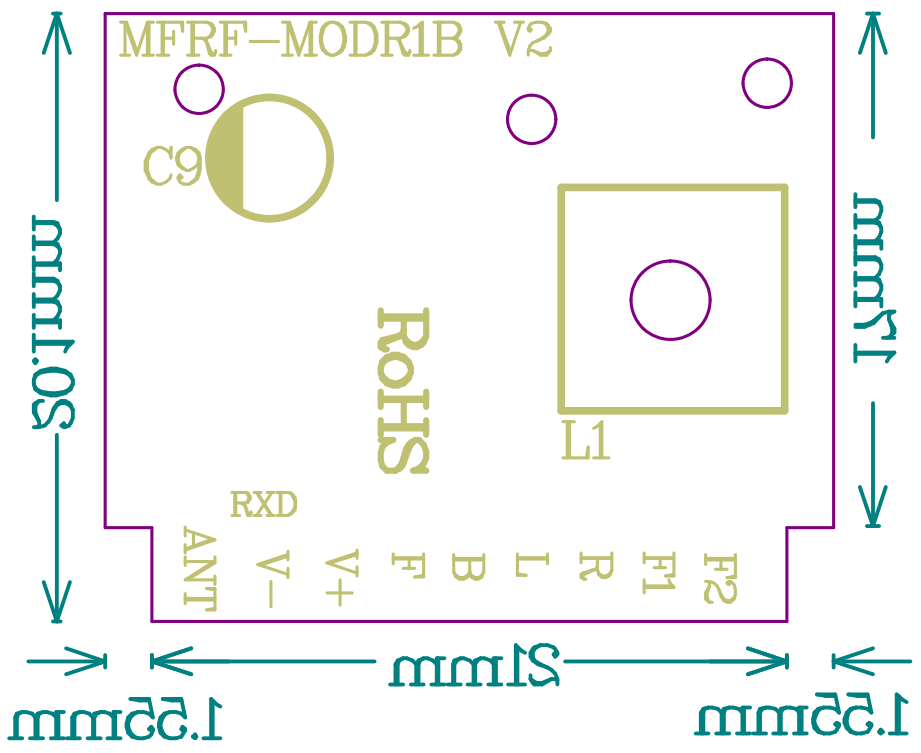
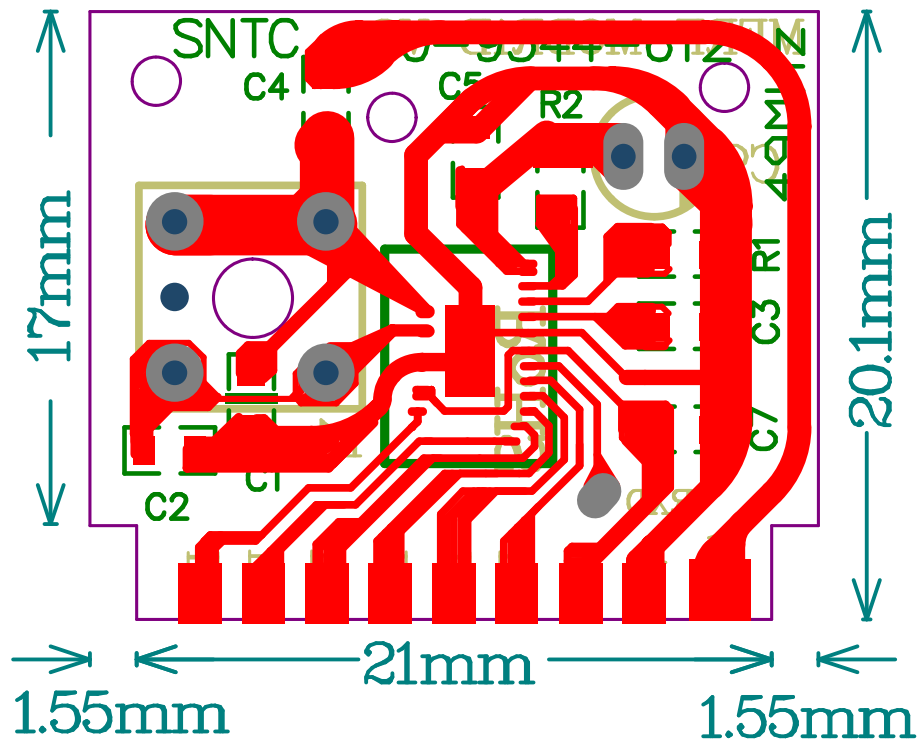
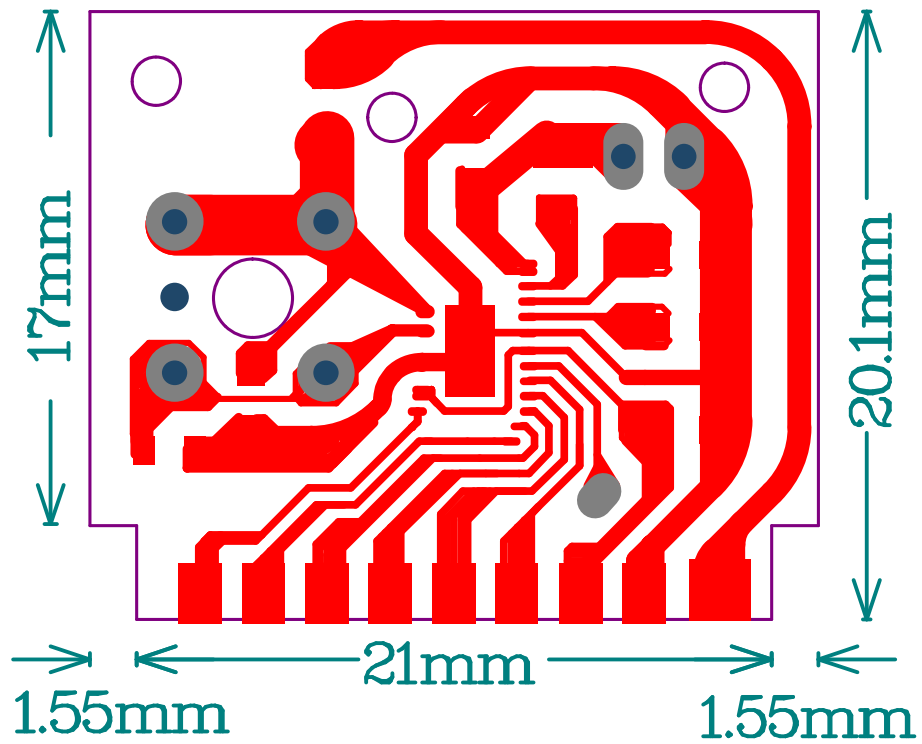


PCB No. : D0-2244-815 2MLC

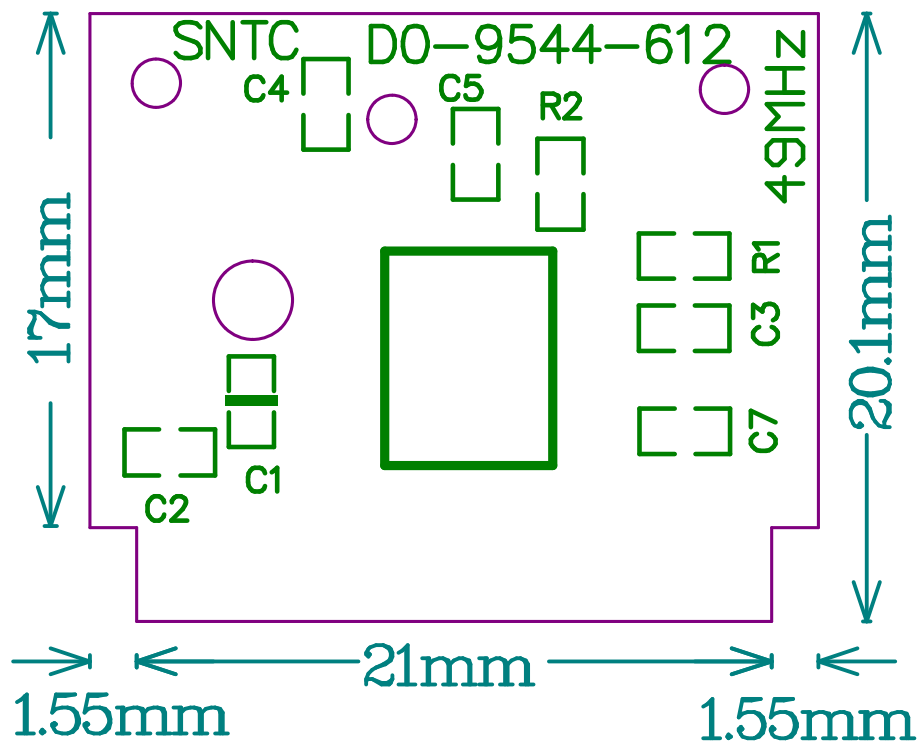




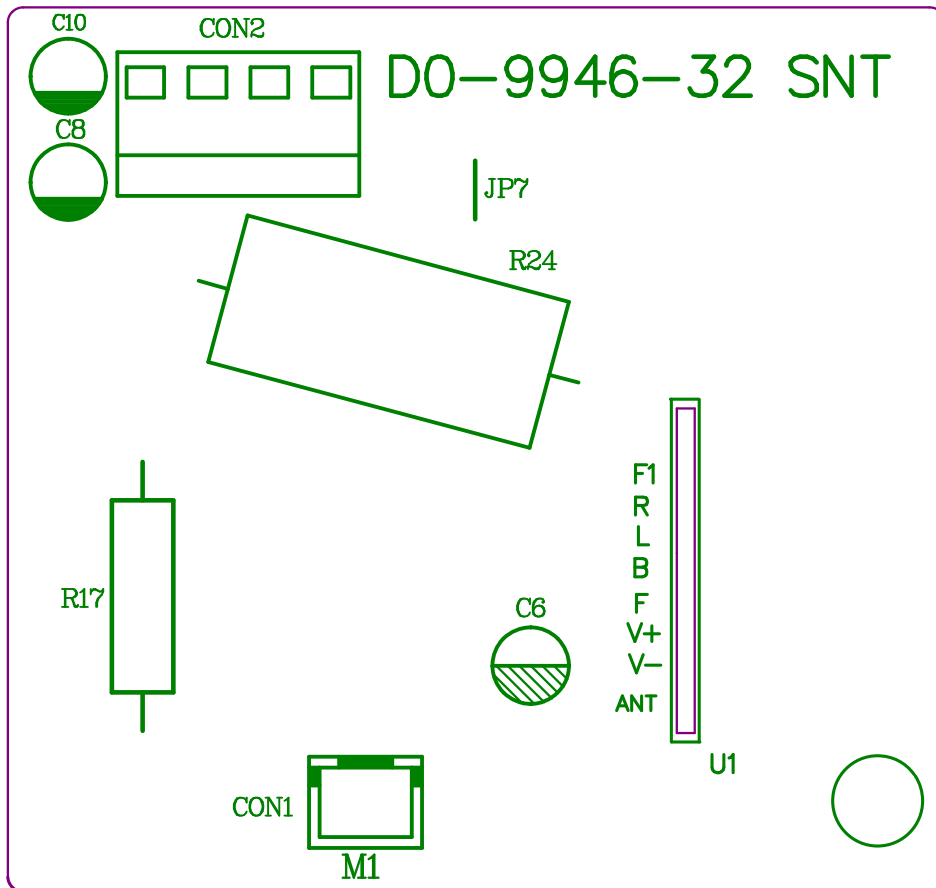
PCB No. : D0-9544-612 SNTC



PCB No. : D0-9544-612 SNTC

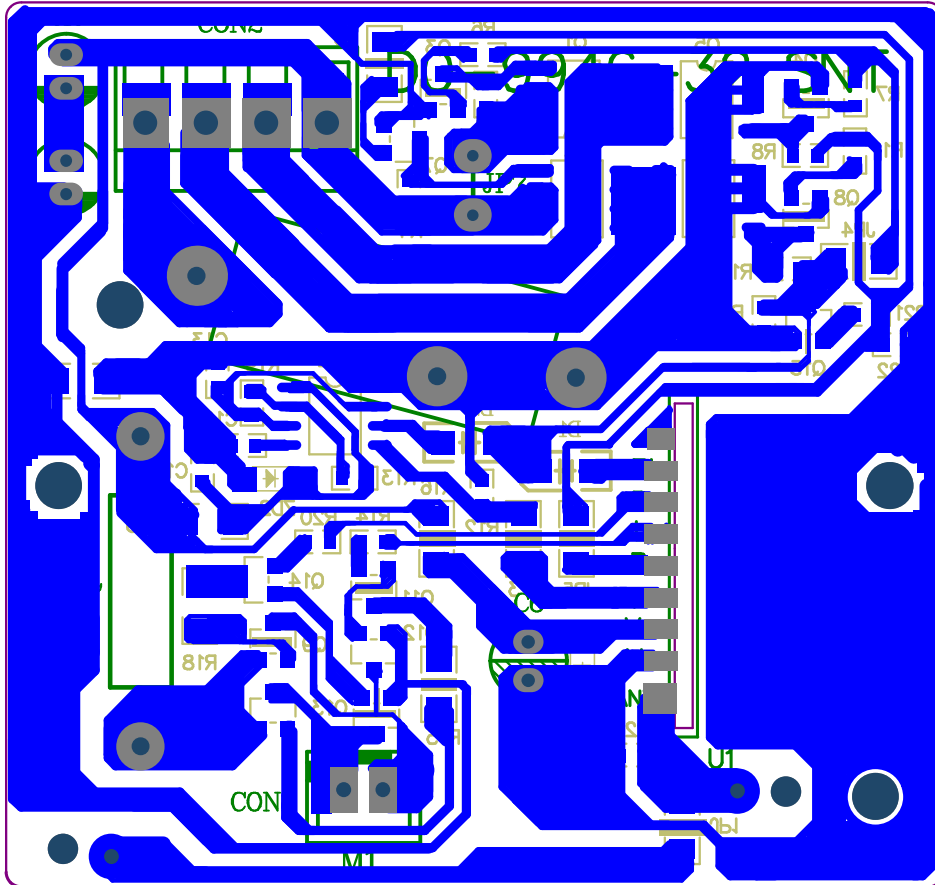


PCB No. : D0-9544-612 SNTC



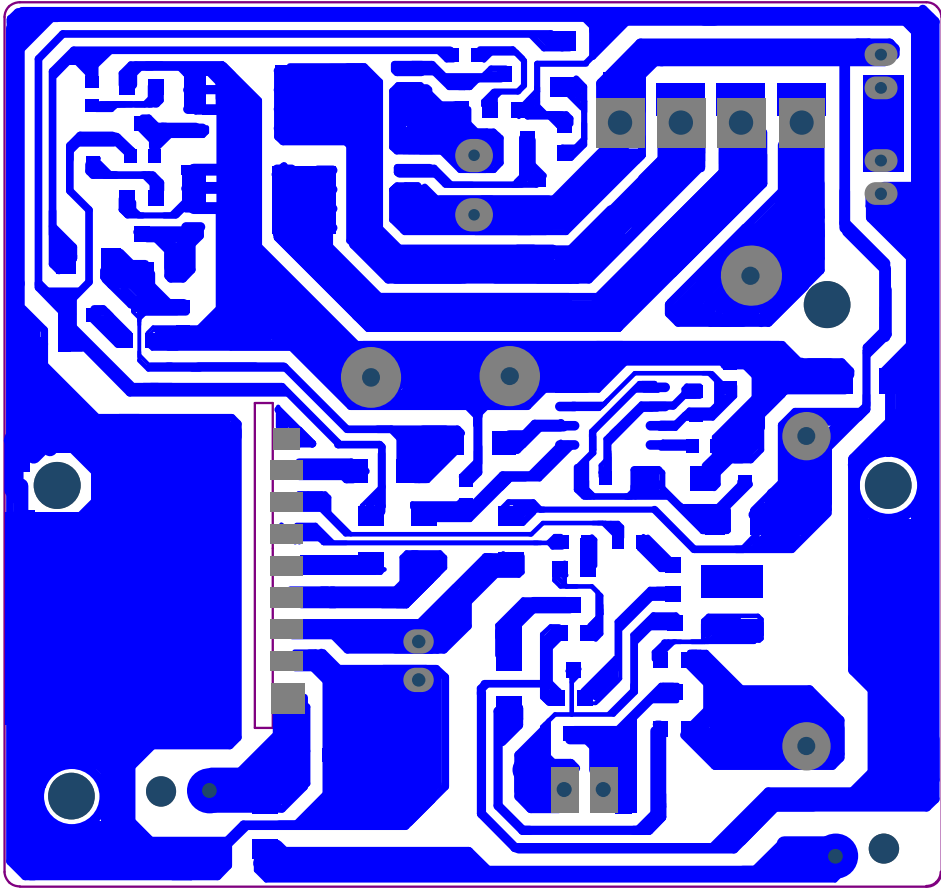
PCB No. : D0-9946-32 SNT

62mm x 58.5mm

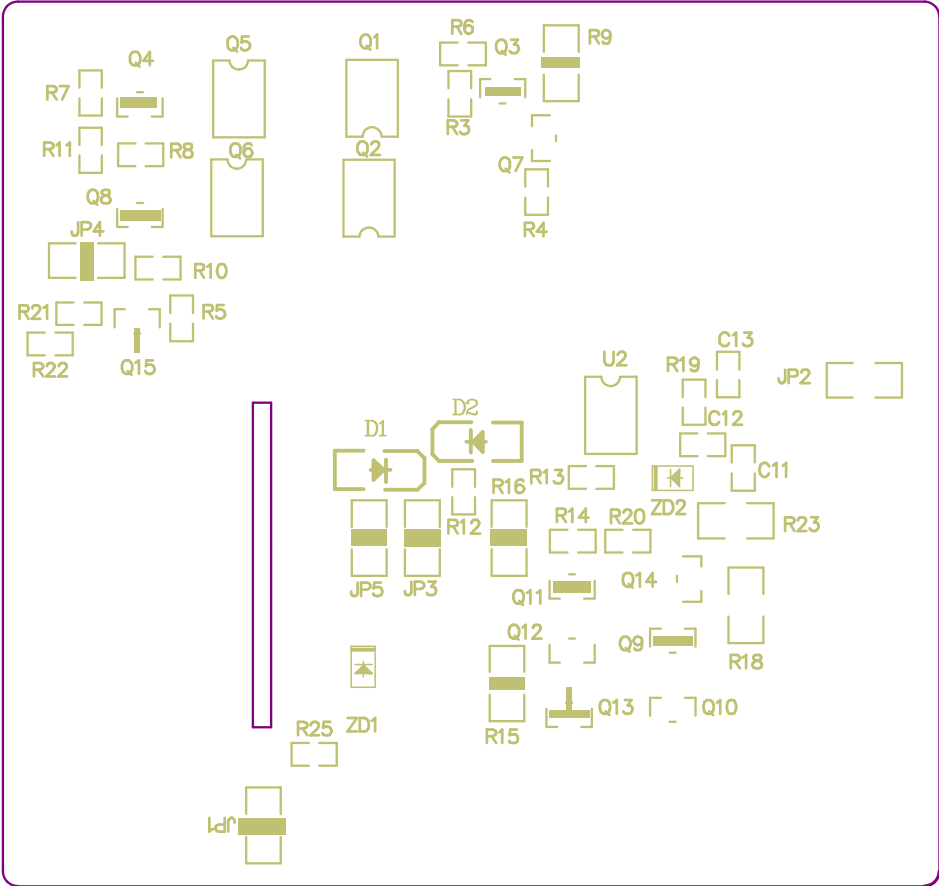


PCB No. : D0-9946-32 SNT

62mm x 58.5mm



PCB No. : D0-0046-3S 2MT



PCB No. : D0-0048-35 2MT