

**OPERATING INSTRUCTIONS:**

**Remember to take out all batteries from Tarantula and transmitter after playing.**

1. Do not mix old and new batteries.
2. Do not mix alkaline, standard (Carbon-Zinc), or rechargeable batteries.

**BATTERY INSTALLATION**  
(FOR MAXIMUM PERFORMANCE, ONLY USE ALKALINE BATTERIES)

**SPIDER**

1. Make sure the ON/OFF switch of the Tarantula is at the OFF position (See Diagram 1)
2. Unscrew to open the battery cover (See Diagram 1)
3. Insert batteries by matching (+) and (-) sign as indicated in the battery compartment (See Diagram 2)
4. Replace the battery cover and screw tightly.

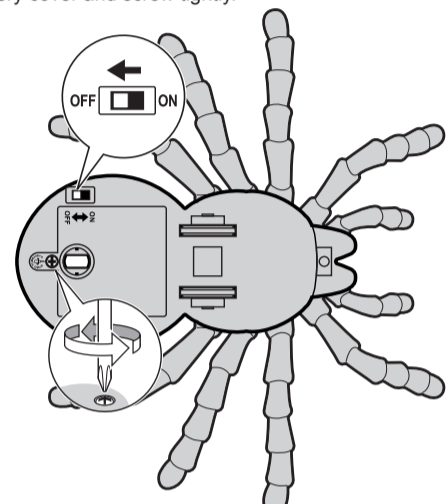


DIAGRAM 1

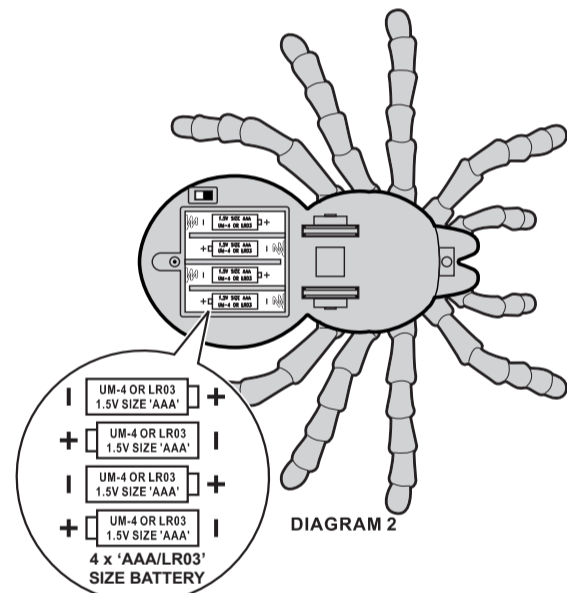


DIAGRAM 2

**TRANSMITTER**

1. Slide the battery cover and install a 9V battery by matching (+) and (-) sign as indicated in the battery compartment. (See Diagram 3).
2. Replace the battery cover.

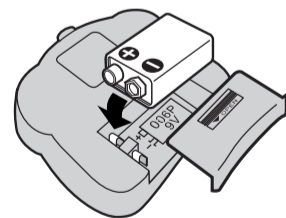
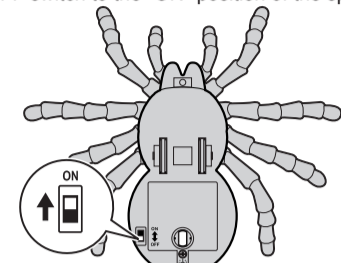


DIAGRAM 3

**HOW TO PLAY**

**START TO PLAY**

1. Push the ON/OFF switch to the "ON" position of the spider (See Diagram 4)



STOP

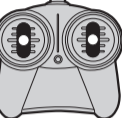
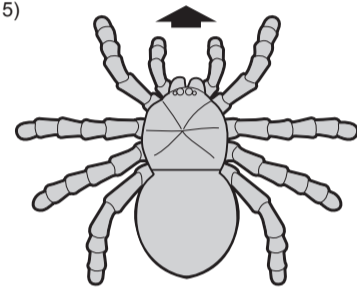


DIAGRAM 4

**FORWARD RUNNING**

2. Push both the Driving Control Sticks forward for forward motion. (See Diagram 5)



FORWARD

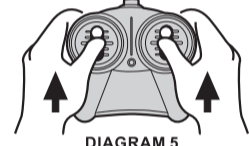
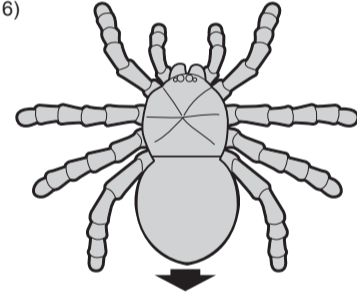


DIAGRAM 5

**REVERSE RUNNING**

3. Pull both the Driving Control Sticks backward for reverse motion. (See Diagram 6)



REVERSE

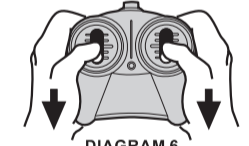


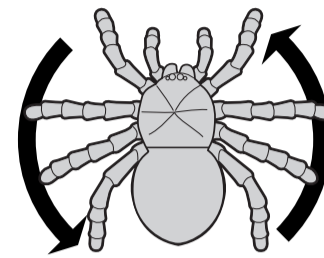
DIAGRAM 6



**WARNING: CHOKING HAZARD.**  
Small parts. Not for children under 3 years

**360 DEGREE SPINS**

4. Push the Right Driving Control Stick forward while pulling the Left Driving Control Stick backward at the same time. (See Diagram 7)
5. Push the Left Driving Control Stick forward while pulling the Right Driving Control Stick backward at the same time. (See Diagram 8)



SPINS LEFT

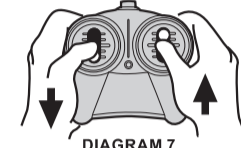
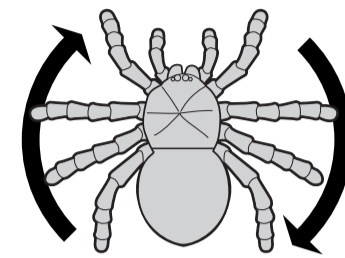


DIAGRAM 7



SPINS RIGHT

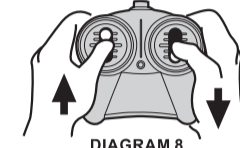


DIAGRAM 8

**STEERING OPERATION**

6. Push only the Left Driving Control Stick forward to turn Right. (See Diagram 9)
7. Push only the Right Driving Control Stick forward to turn Left. (See Diagram 10)

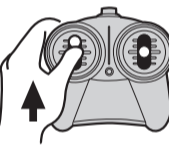
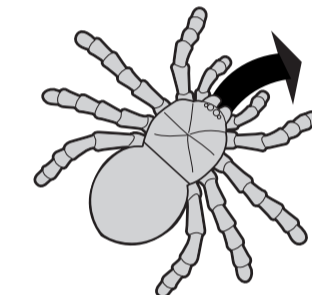


DIAGRAM 9

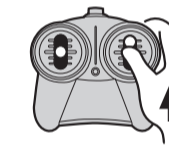
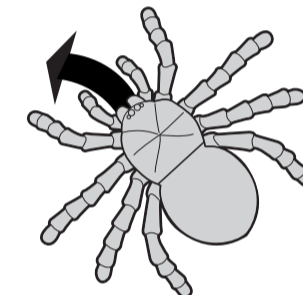


DIAGRAM 10

**STEERING OPERATION**

8. Pull only the Right Driving Control Stick backward to turn Right. (See Diagram 11)
9. Pull only the Left Driving Control Stick backward to turn Left. (See Diagram 12)

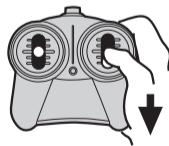
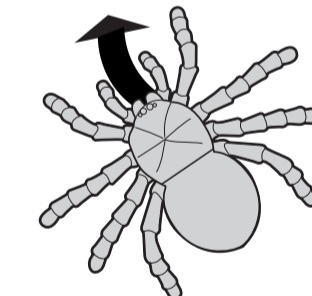


DIAGRAM 11

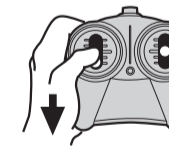
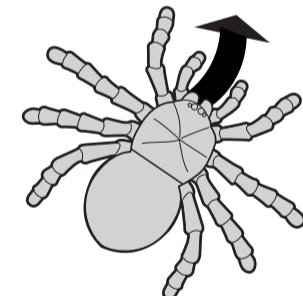


DIAGRAM 12

**STOP OPERATION**

10. Release both Driving Control Sticks, the Tarantula will Stop.

**PERFORMANCE TIPS:**

- Don't drive in grass, sand or carpet.
- Don't go through water.
- Use fresh alkaline batteries.
- Be sure to rest your spider for at least 30 minutes after every 15 minutes of operation.
- Make sure ON/OFF switch on your spider is OFF when not in use.
- Don't bend antenna.
- Electrical, CB interference, mobile phones, air conditioning, elevators and steel girders in building will affect the operation of your spider.
- Don't leave the spider or transmitter near sources of heat or under direct sunlight for long periods of time.
- Remove the batteries from the spider and transmitter when not in use.

**BATTERY CAUTIONS**

1. For maximum performance, use alkaline batteries.
2. Do not mix old and new batteries.
3. Do not mix alkaline, standard (carbon-zinc), or rechargeable batteries.
4. Do not recharge non-rechargeable battery.
5. Ensure batteries are inserted with the correct polarity.
6. Remove batteries when toy is not in use.
7. Remove exhausted batteries from toy and dispose of in accordance with the makers recommendation.
8. Rechargeable batteries should only be charged under adult supervision.
9. Remove rechargeable batteries from toy before charging.
10. The supply terminals are not to be short-circuited.
11. The antenna wires are not to be inserted into socket outlet.

**NOT SUITABLE FOR CHILDREN UNDER 3 YEARS OF AGE, DUE TO SMALL PARTS.**

**FCC NOTE:**

THE ANTENNA PROVIDED IS A UNIQUE ANTENNA. BY INSTALLATION OF UNAUTHORIZED ANTENNA TO THIS EQUIPMENT. SUCH UNAUTHORIZED INSTALLATION COULD VOID THE USER'S AUTHORITY TO OPERATE THE EQUIPMENT.

THE MANUFACTURER IS NOT RESPONSIBLE FOR ANY RADIO OR TV INTERFERENCE CAUSED BY UNAUTHORIZED MODIFICATIONS TO THIS EQUIPMENT. SUCH MODIFICATIONS COULD VOID THE USER'S AUTHORITY TO OPERATE THE EQUIPMENT.

**ATTENTION PARENTS:**

IT IS RECOMMENDED THAT THIS TOY AND ALL ACCESSORIES BE PERIODICALLY EXAMINED FOR POTENTIAL HAZARDS AND THAT ANY POTENTIALLY HAZARDOUS PARTS BE REPAIRED OR REPLACED.