

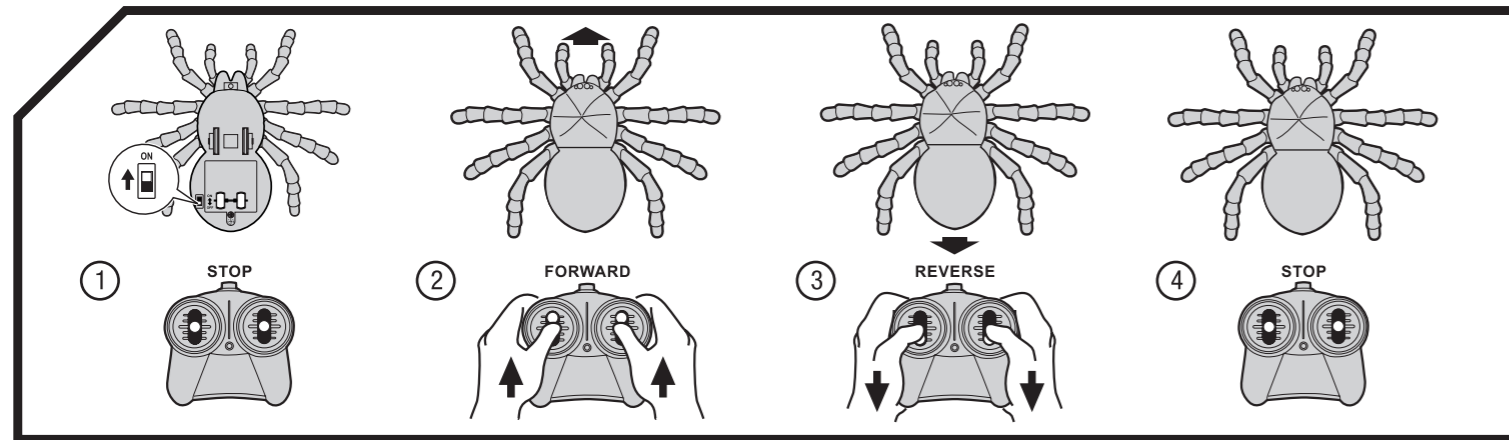
# English



## RADIO CONTROL TARANTULA

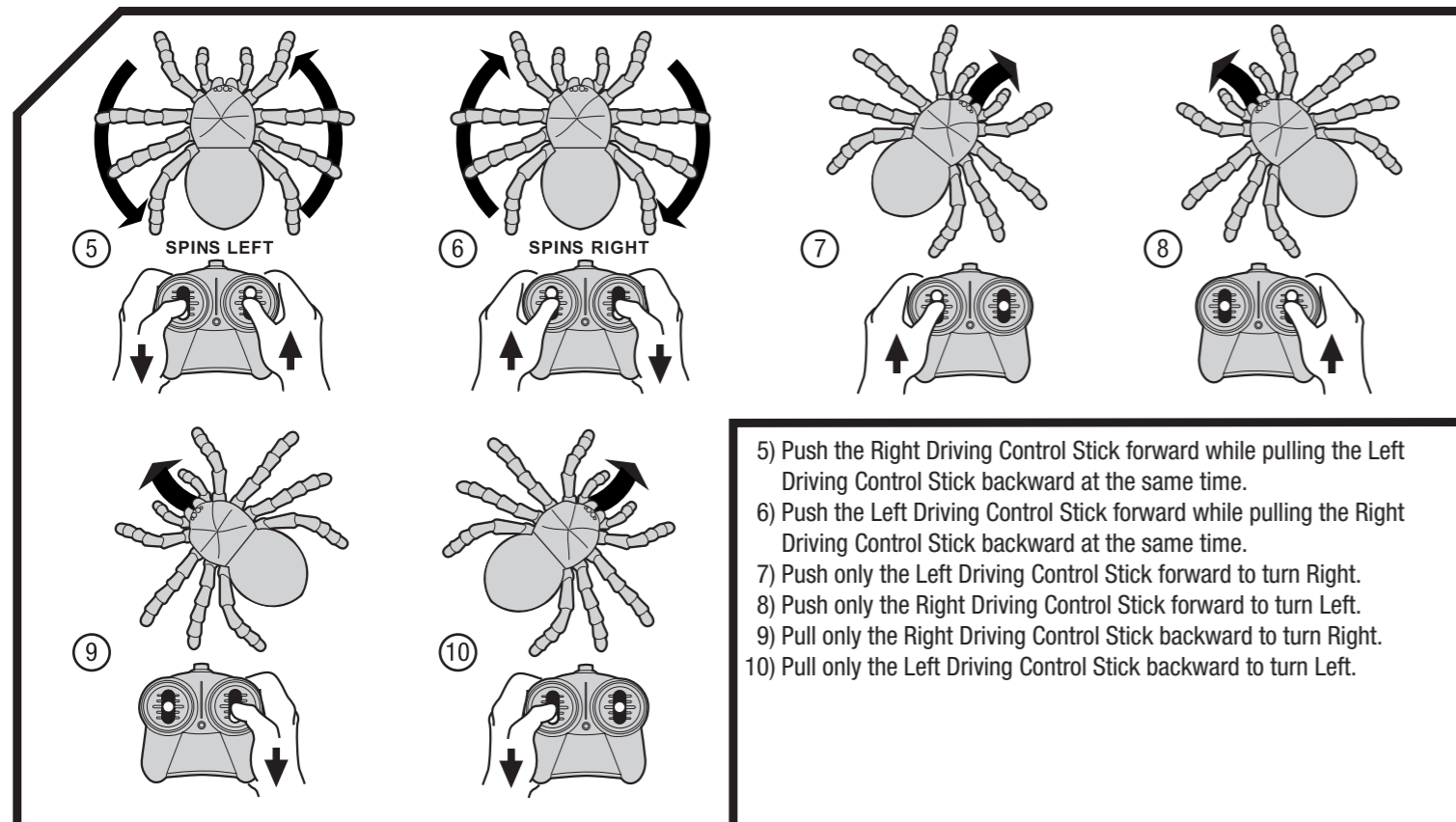
### How to Play

#### START TO PLAY:



- 1) Push the ON/OFF switch to the "ON" position of the spider.
- 2) Push both the Driving Control Sticks forward for forward motion.
- 3) Pull both the Driving Control Sticks backward for reverse motion.
- 4) Release both Driving Control Sticks, the Black Widow will Stop.

#### 360 DEGREE SPINS:



- 5) Push the Right Driving Control Stick forward while pulling the Left Driving Control Stick backward at the same time.
- 6) Push the Left Driving Control Stick forward while pulling the Right Driving Control Stick backward at the same time.
- 7) Push only the Left Driving Control Stick forward to turn Right.
- 8) Push only the Right Driving Control Stick forward to turn Left.
- 9) Pull only the Right Driving Control Stick backward to turn Right.
- 10) Pull only the Left Driving Control Stick backward to turn Left.

O.I. NO.6251

#AD18000

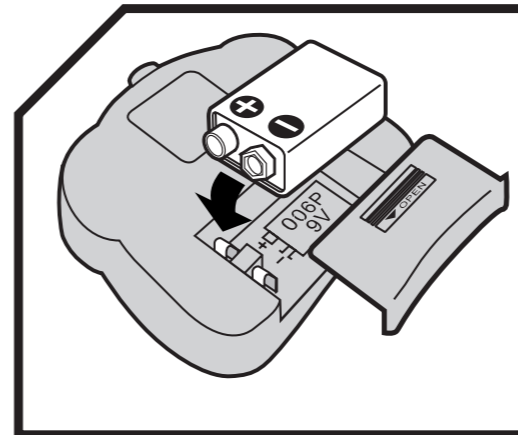
6+

AAAx4  
NOT INCLUDED

9Vx1  
NOT INCLUDED

### Battery Installation (FOR MAXIMUM PERFORMANCE, ONLY USE ALKALINE BATTERIES)

#### TRANSMITTER:



- 1) Slide the battery cover and install a 9V battery by matching (+) and (-) sign as indicated in the battery compartment.
- 2) Replace the battery cover.

#### PERFORMANCE TIPS:

- Don't use in grass, sand or carpet.
- Don't go through water.
- Use fresh alkaline batteries.
- Be sure to rest your spider for at least 30 minutes after every 15 minutes of operation.
- Make sure ON/OFF switch on your spider is OFF when not in use.
- Don't bend antenna.
- Electrical, CB interference, mobile phones, air conditioning, elevators and steel girders in buildings may affect the operation of your spider.
- Don't leave the spider or transmitter near sources of heat or under direct sunlight for long periods of time.
- Remove the batteries from the spider and transmitter when not in use.

#### FCC NOTE:

This equipment has been tested and found to comply with the limits for a Class B digital device, pursuant to Part 15 of the FCC Rules. These limits are designed to provide reasonable protection against harmful interference in a residential installation. This equipment generates, uses, and can radiate radio frequency energy and, if not installed and used in accordance with the instructions, may cause harmful interference to radio communications. However, there is no guarantee that interference will not occur in a particular installation. If this equipment does cause harmful interference to radio or television reception, which can be determined by turning the equipment off and on, the user is encouraged to try to correct the interference by one or more of the following measures:

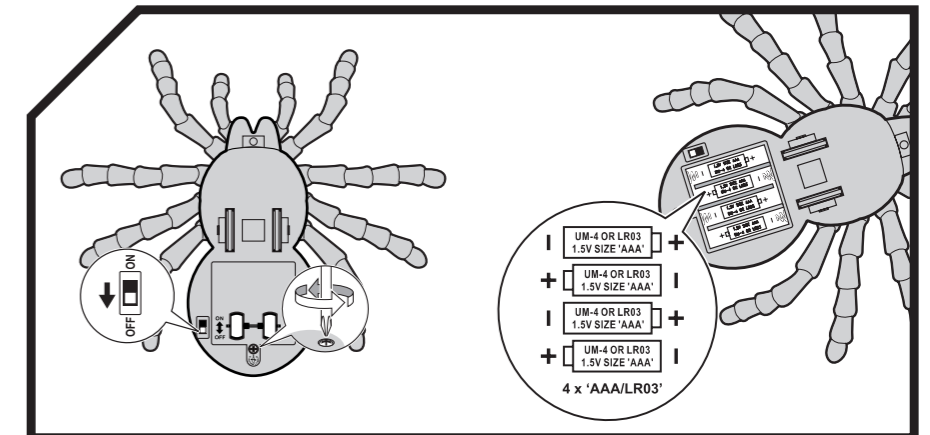
- Reorient or relocate the receiving antenna.
- Increase the separation between the equipment and receiver.
- Connect the equipment into an outlet on a circuit different from that to which the receiver is connected.
- Consult the dealer or an experienced radio/TV technician for help.

Warning: Changes or modifications to this unit not expressly approved by the party responsible for compliance could void the user's authority to operate the equipment.

#### ATTENTION PARENTS:

IT IS RECOMMENDED THAT THIS TOY AND ALL ACCESSORIES BE PERIODICALLY EXAMINED FOR POTENTIAL HAZARDS AND THAT ANY POTENTIALLY HAZARDOUS PARTS BE REPAIRED OR REPLACED.

#### TARANTULA:



- 1) Make sure the ON/OFF switch of the Black Widow is at the OFF position.
- 2) Unscrew to open the battery cover.
- 3) Insert batteries by matching (+) and (-) sign as indicated in the battery compartment.
- 4) Replace the battery cover and screw tightly.



CONFORMS TO THE SAFETY REQUIREMENTS OF ASTM F963.

Contents and colors may vary.

#### CAUTION:

Remove all twist-ties and plastic loops before giving toy to child.

Do not mix old and new batteries. Do not mix alkaline, standard (carbon-zinc), or rechargeable batteries.

Non-rechargeable batteries are not to be recharged. Remove exhausted batteries from the toy. Supply terminals are not to be short circuited.

© 2018 DISCOVERY COMMUNICATIONS, LLC. ANIMAL PLANET AND THE ANIMAL PLANET LOGO ARE TRADEMARKS OF (ET LE LOGO ANIMAL PLANET SONT DES MARQUES DÉPOSÉES DE/Y EL LOGO DE LA ANIMAL PLANET SON MARCAS REGISTRADAS DE) DISCOVERY COMMUNICATIONS, LLC, USED UNDER LICENSE (UTILISÉES SOUS LICENCE/UTILIZADO BAJO LICENCIA). ALL RIGHTS RESERVED (TOUS DROITS RÉSERVÉS/TODOS LOS DERECHOS RESERVADOS). ANIMALPLANET.COM ANIMALPLANET.CA

© 2018 GEOFFREY, LLC, A SUBSIDIARY OF (UNE FILIALE DE/UNA SUBSIDIARIA DE) TOYS"R"US, LLC. MADE IN CHINA (FABRIQUÉ EN CHINE/FABRICADO EN CHINA), DISTRIBUTED IN THE UNITED STATES BY (DISTRIBUÉ AUX ÉTATS-UNIS PAR/DISTRIBUIDO EN LOS ESTADOS UNIDOS POR) TOYS"R"US, INC., WAYNE, NJ 07470. IMPORTED BY (IMPORTÉ PAR/IMPORTADO POR) TOYS"R"US (CANADA) LTD. (LTÉE), 2777 LANGSTAFF ROAD, CONCORD, ON L4K 4M5. DISTRIBUTED IN AUSTRALIA BY (DISTRIBUÉ EN AUSTRALIE PAR/ DISTRIBUIDO EN AUSTRALIA POR) TOYS"R"US (AUSTRALIA (AUSTRALIE)) PTY LTD.(LTÉE), REGENTS PARK NSW 2143. www.toysrus.com www.toysrus.ca