

Diagram 1

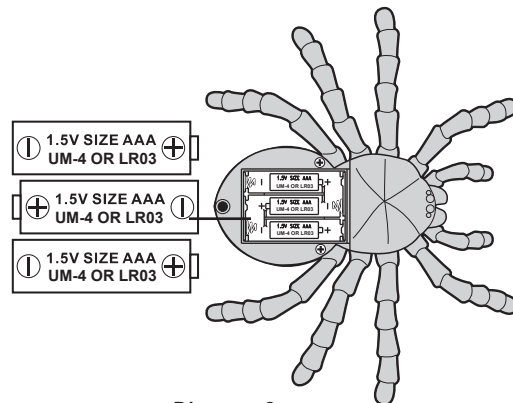


Diagram 2

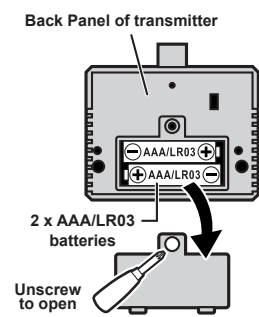


Diagram 3

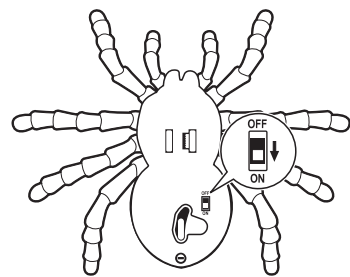


Diagram 4

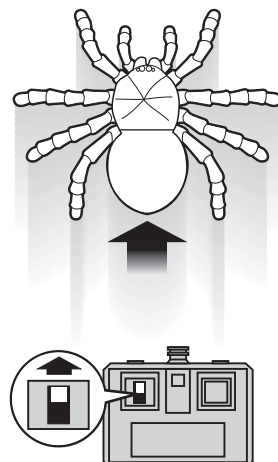


Diagram 5

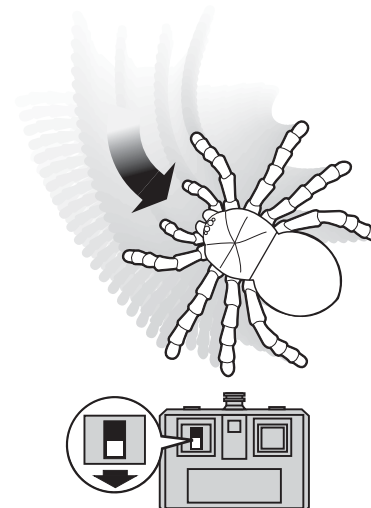


Diagram 6

OPERATING INSTRUCTIONS:

INSTRUCTION SHEET & PACKAGING MUST BE RETAINED SINCE IT CONTAINS IMPORTANT INFORMATION.

Remember to take out all batteries from spider and transmitter after playing.

1. Do not mix old and new batteries.
2. Do not mix alkaline, standard (Carbon-Zinc), or rechargeable batteries.

BATTERY INSTALLATION

(FOR MAXIMUM PERFORMANCE, ONLY USE ALKALINE BATTERIES)

SPIDER

1. Make sure the ON/OFF switch of the spider is at the OFF position. (See Diagram 1)
2. Unscrew to open the battery cover. (See Diagram 1)
3. Insert batteries by matching (+) and (-) sign as indicated in the battery pack. (See Diagram 2)
4. Replace and screw the battery cover.

TRANSMITTER

1. Remove battery cover and install 2 x AAA batteries by matching (+) and (-) sign as indicated in the battery compartment. (See Diagram 3).
2. Replace the battery cover.

HOW TO PLAY

START TO PLAY

1. Push the ON/OFF switch to the "ON" position of the spider. (See Diagram 4)

FORWARD RUNNING

2. Push the Driving Control Stick forward for forward running. (See Diagram 5)

REVERSE RUNNING

3. Pull the Driving Control Stick backward, the spider will turn in reverse. (See Diagram 6)

STOP OPERATION

4. Release the Driving Control Stick to stop the spider.

PERFORMANCE TIPS:

- Don't drive in grass, sand or on carpet.
- Don't go through water.
- Use fresh alkaline batteries.
- Be sure to rest your spider for at least 30 minutes after every 15 minutes of operation.
- Make sure ON/OFF switch on your spider is OFF when not in use.
- Don't bend antenna.
- Electrical, CB interference, mobile phones, air conditioning, elevators and steel girders in building will affect the operation of your spider.
- Don't leave the spider or transmitter near sources of heat or under direct sunlight for long periods of time.
- Remove the batteries from the spider and transmitter when not in use.

BATTERY CAUTIONS

1. For maximum performance, use alkaline batteries.
2. Do not mix old and new batteries.
3. Do not mix alkaline, standard (carbon-zinc), or rechargeable batteries.
4. Do not recharge non-rechargeable battery.
5. Ensure batteries are inserted with the correct polarity.
6. Remove batteries when toy is not in use.
7. Remove exhausted batteries from toy and dispose of in accordance with the makers recommendation.
8. Rechargeable batteries should only be charged under adult supervision.
9. Remove rechargeable batteries from toy before charging.
10. The supply terminals are not to be short-circuited.
11. The antenna wires are not to be inserted into socket outlet.

NOT SUITABLE FOR CHILDREN UNDER 3 YEARS OF AGE, DUE TO SMALL PARTS.

FCC NOTE:

THE ANTENNA PROVIDED IS A UNIQUE ANTENNA. BY INSTALLATION OF UNAUTHORIZED ANTENNA TO THIS EQUIPMENT, SUCH UNAUTHORIZED INSTALLATION COULD VOID THE USER'S AUTHORITY TO OPERATE THE EQUIPMENT.

THE MANUFACTURER IS NOT RESPONSIBLE FOR ANY RADIO OR TV INTERFERENCE CAUSED BY UNAUTHORIZED MODIFICATIONS TO THIS EQUIPMENT. SUCH MODIFICATIONS COULD VOID THE USER'S AUTHORITY TO OPERATE THE EQUIPMENT.

Warning: Changes or modifications to this unit not expressly approved by the party responsible for compliance could void the user's authority to operate the equipment.

NOTE: This equipment has been tested and found to comply with the limits for a Class B digital device, pursuant to Part 15 of the FCC Rules. These limits are designed to provide reasonable protection against harmful interference in a residential installation. This equipment generates, uses and can radiate radio frequency energy and, if not installed and used in accordance with the instructions, may cause harmful interference to radio communications.

However, there is no guarantee that interference will not occur in a particular installation. If this equipment does cause harmful interference to radio or television reception, which can be determined by turning the equipment off and on, the user is encouraged to try to correct the interference by one or more of the following measures:

- Reorient or relocate the receiving antenna.
- Increase the separation between the equipment and receiver.
- Connect the equipment into an outlet on a circuit different from that to which the receiver is connected.
- Consult the dealer or an experienced radio/TV technician for help.

ATTENTION PARENTS:

IT IS RECOMMENDED THAT THIS TOY AND ALL ACCESSORIES BE PERIODICALLY EXAMINED FOR POTENTIAL HAZARDS AND THAT ANY POTENTIALLY HAZARDOUS PARTS BE REPAIRED OR REPLACED.

EZTEC[®]
www.eztec.hk

EZ-TEC[®] IS A REGISTERED TRADEMARK OWNED BY SCIENTIFIC TOYS, LTD.

© 2019 SCIENTIFIC TOYS LTD. 1108, TOWER B,
14 SCIENCE MUSEUM ROAD, TSIMSHATSUI, HONG KONG.
PRINTED IN CHINA
O.I. NO.6521



**WARNING:
CHOKING HAZARD-**
Small parts, Not for children under 3 years