

## TO REPLACE THE WHEELS

The wheels can be removed to change the style of the wheel hubs (See diagram 13).

1. Remove the tire to take off the hub.
2. Replace the spare tire with new style wheel hub.

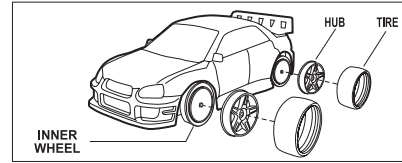


Diagram 13

3. Do not remove the inner wheel when replacing the hub and tire.

## PERFORMANCE TIPS

1. Operate your vehicle in a safe place. Do not drive in the street. Avoid driving through sand, mud, and water, which can impair the performance of your car.
2. Do not leave your transmitter or car near sources of heat or under direct sunlight for long periods of time.
3. Do not expose your transmitter or car to humidity for long periods of time as dampness can damage interior mechanism.
4. Clean the toy vehicle regularly with a slightly damp cloth.
5. When the vehicle slows down or begins to move erratically, replace the batteries with new ones.
6. Concrete walls, metal posts, wire fence, and other electrical appliances and machineries can interfere with the transmission signal of your transmitter and result in erratic performance of your car. In this case, change to a different location.
7. If another radio control car or CB radio is operating at your same location, they will interfere with the performance of your car.
8. Alkaline batteries are highly recommended.

#96173  
315mm x 148mm  
65-3082-100-0100

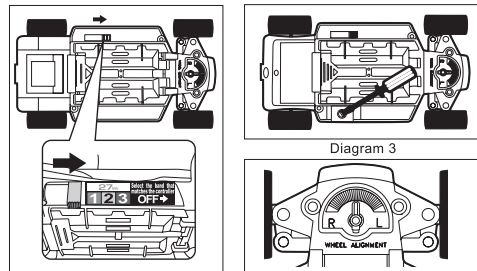


Diagram 2

Diagram 4

## OPERATION

1. Pass the cable of the vehicle through the antenna tube provided and insert the tube into the vehicle tightly (See diagram 5).
2. To switch ON the car, slide the ON/OFF switch to one of the bands, e.g. Band 1 (See diagram 6).
3. Slide the band of the transmitter to the same band that matches the car.
4. Operate the vehicle with the transmitter. Functions include: Forward, Reverse, Left and Right, Stop. (See diagram 7)
5. Turn OFF the vehicle after playing and remove all batteries from the transmitter and the car.
6. If the vehicle does not run straight, adjust the "Steering Alignment Lever" on the underside of the vehicle. (See diagram 4)

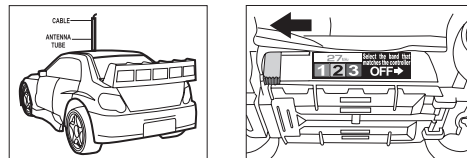


Diagram 5

Diagram 6

## BATTERY CAUTIONS

1. Do not mix old and new batteries.
2. Do not mix alkaline, standard (carbon-zinc), or rechargeable (nickel-cadmium) batteries.
3. Batteries are to be inserted with correct polarity.
4. Exhausted batteries are to be removed from the toy.
5. The supply terminals are not to be short-circuited.

FCC NOTE : THE MANUFACTURER IS NOT RESPONSIBLE FOR ANY RADIO OR TV INTERFERENCE CAUSED BY UNAUTHORIZED MODIFICATIONS TO THIS EQUIPMENT. SUCH MODIFICATIONS COULD VOID THE USER'S AUTHORITY TO OPERATE THE EQUIPMENT.



© 2005 SCIENTIFIC TOYS, LTD.  
CHAI WAN, HONG KONG  
PRINTED IN CHINA

OI. NO.3082

## OPERATING INSTRUCTIONS

### INTRODUCTION

The Multi-Player Control System allows up to 6 cars to be raced at the same time. To achieve the best performance, please read the instructions carefully before use, then collect the entire series and go racing!

### BATTERY REQUIREMENT

Vehicle: 3 "AAA" batteries  
Transmitter: 2 "AA" batteries

### BATTERY INSTALLATION

#### TRANSMITTER

1. Remove the battery cover and install 2 "AA" batteries by matching the (+) and (-) signs as indicated in the battery compartment (See diagram 1).
2. Replace the battery cover.

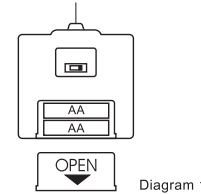


Diagram 1

#### VEHICLE

1. Make sure the ON/OFF switch at the underside of the vehicle is at the OFF position (See diagram 2).
2. UNSCREW to open the battery compartment (See diagram 3).
3. Insert 3 "AAA" batteries by matching the (+) and (-) signs as indicated in the battery compartment.
4. Replace the battery lid.

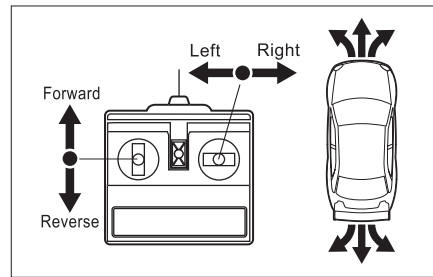


Diagram 7

### CHANGING BANDS FOR MULTI-PLAYER CONTROL SYSTEM

Collect multiple Multi-Player Control System vehicles to run up to 6 cars at the same time.

1. Assign a different band to each car. The 6 available bands are Band 1, Band 2, and Band 3 for 27MHz (See diagram 8); Band 4, Band 5, and Band 6 for 49 MHz (See diagram 9).
2. Adjust the transmitter to match the band selected for the car. For example, if Band 2 is selected for the car, slide the band switch of the transmitter to Band 2. (See diagrams 10 and 11).

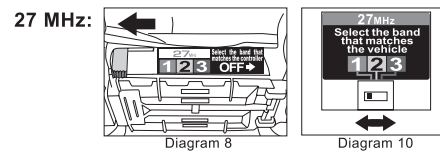


Diagram 8

Diagram 10

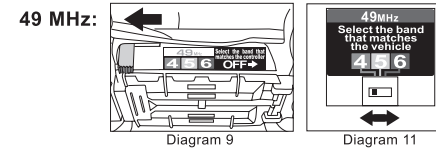


Diagram 9

Diagram 11

3. Select a different band for each pair of car and transmitter and go racing. (See diagram 12)

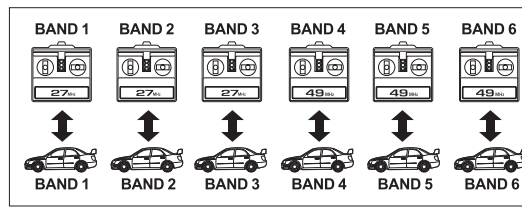


Diagram 12

### TIPS FOR THE MULTI-PLAYER CONTROL SYSTEM

1. When operating multiple cars, only one pair of car and transmitter shall be using the same band. Interference may occur if i) more than one car is set to the same band; or ii) more than one transmitter is set to the same band.
2. If a car does not respond, check the transmitter and the car to ensure that both are set to the same band.
3. The Multi-Player Control System allows multiple cars within the collection to be raced at the same time. Use of other radio control products that are not part of this Multi-Player Control System may cause interference and loss of control to the cars.