

OPERATING INSTRUCTIONS:

Remember to take out all batteries from snake and transmitter after playing.

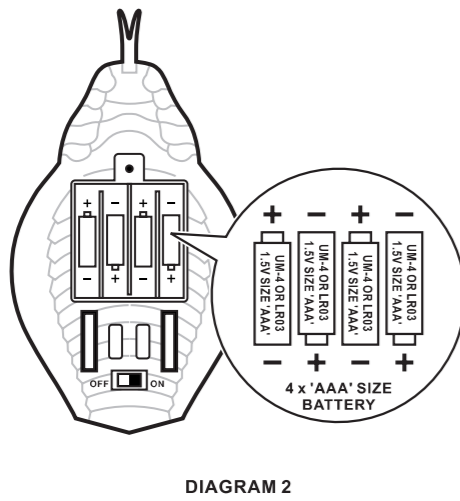
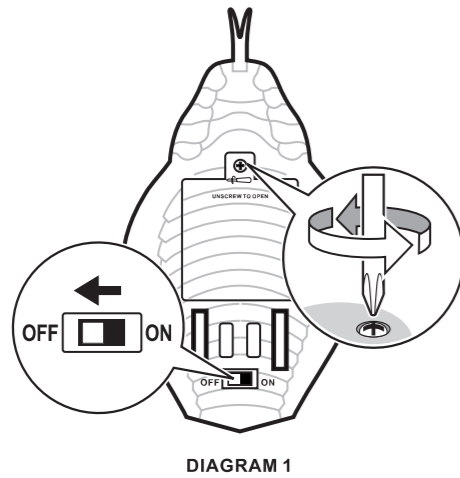
1. Do not mix old and new batteries.
2. Do not mix alkaline, standard (Carbon-Zinc), or rechargeable batteries.

BATTERY INSTALLATION

(FOR MAXIMUM PERFORMANCE, ONLY USE ALKALINE BATTERIES)

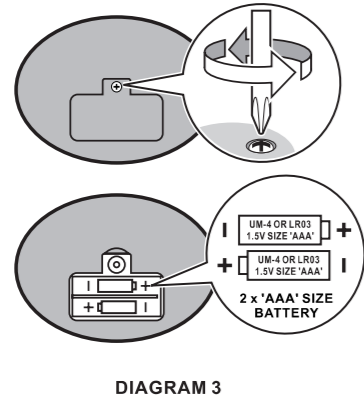
SNAKE

1. Make sure the ON/OFF switch of the snake is at the OFF position (See Diagram 1)
2. Unscrew to open the battery cover (See Diagram 1)
3. Insert 4 x AAA/LR3 battery by matching (+) and (-) sign as indicated in the battery pack (See Diagram 2)
4. Replace and screw the battery cover



TRANSMITTER

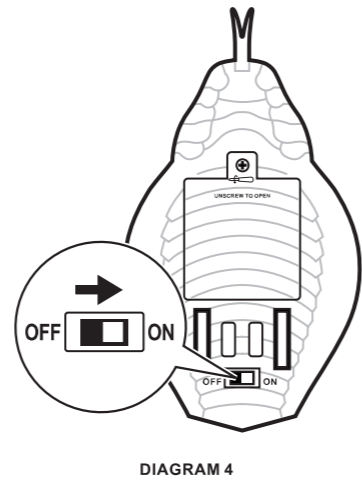
1. Remove battery cover and install 2 x AAA/LR3 battery by matching (+) and (-) sign as indicated in the battery compartment. (See Diagram 3).
2. Replace the battery cover.



HOW TO PLAY

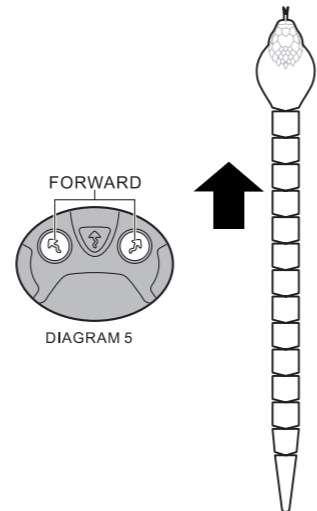
START TO PLAY

1. Push the ON/OFF switch to the "ON" position of the snake. (See Diagram 4)



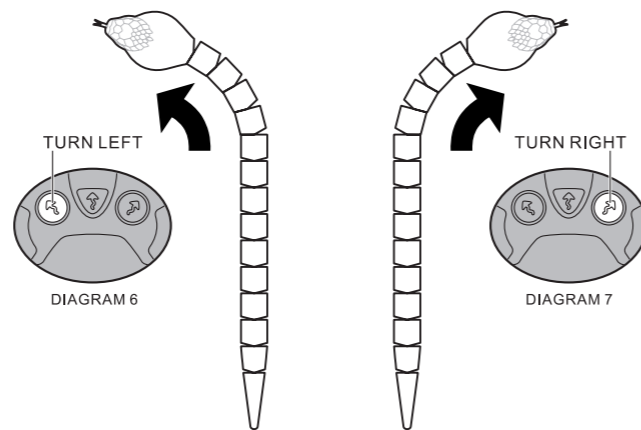
FORWARD RUNNING

2. Press both "LEFT" and "RIGHT" at the same time for forward motion. (See Diagram 5)



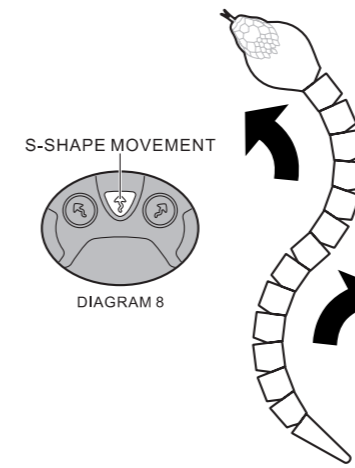
STEERING OPERATION

3. Press "LEFT" button to turn left. (See Diagram 6)
4. Press "RIGHT" button to turn right. (See Diagram 7)



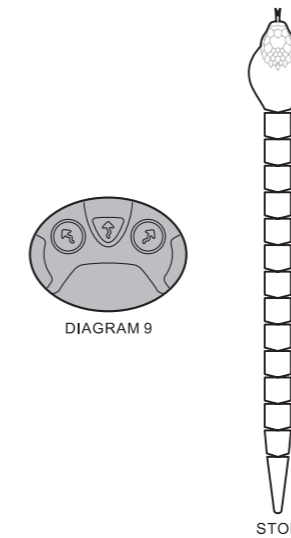
S-SHAPE MOVEMENT

5. Press the button in the middle for "S-Shape movement". (See Diagram 8)



STOP OPERATION

6. Release all buttons, the snake will stop. (See Diagram 9)



PERFORMANCE TIPS:

- Don't drive in grass, sand or carpet.
- Don't go through water.
- Use fresh alkaline batteries.
- Be sure to rest your toy for at least 30 minutes after every 15 minutes of operation.
- Make sure ON/OFF switch on your toy is OFF when not in use.
- Don't bend antenna.
- Electrical, CB interference, mobile phones, air conditioning, elevators and steel girders in building will affect the operation of your toy.
- Don't leave the toy or transmitter near sources of heat or under direct sunlight for long periods of time.
- Remove the batteries from the toy and transmitter when not in use.

BATTERY CAUTIONS

1. For maximum performance, use alkaline batteries.
2. Do not mix old and new batteries.
3. Do not mix alkaline, standard (carbon-zinc), or rechargeable batteries.
4. Do not recharge non-rechargeable battery.
5. Ensure batteries are inserted with the correct polarity.
6. Remove batteries when toy is not in use.
7. Remove exhausted batteries from toy and dispose of in accordance with the makers recommendation.
8. Rechargeable batteries should only be charged under adult supervision.
9. Remove rechargeable batteries from toy before charging.
10. The supply terminals are not to be short-circuited.
11. The antenna wires are not to be inserted into socket outlet.

NOT SUITABLE FOR CHILDREN UNDER 3 YEARS OF AGE, DUE TO SMALL PARTS.

FCC NOTE:

THE ANTENNA PROVIDED IS A UNIQUE ANTENNA. BY INSTALLATION OF UNAUTHORIZED ANTENNA TO THIS EQUIPMENT. SUCH UNAUTHORIZED INSTALLATION COULD VOID THE USER'S AUTHORITY TO OPERATE THE EQUIPMENT.

THE MANUFACTURER IS NOT RESPONSIBLE FOR ANY RADIO OR TV INTERFERENCE CAUSED BY UNAUTHORIZED MODIFICATIONS TO THIS EQUIPMENT. SUCH MODIFICATIONS COULD VOID THE USER'S AUTHORITY TO OPERATE THE EQUIPMENT.

ATTENTION PARENTS:

IT IS RECOMMENDED THAT THIS TOY AND ALL ACCESSORIES BE PERIODICALLY EXAMINED FOR POTENTIAL HAZARDS AND THAT ANY POTENTIALLY HAZARDOUS PARTS BE REPAIRED OR REPLACED.



WARNING:
CHOKING HAZARD-
Small parts, Not for children under 3 years

EZTEC®
www.ez-tec.com

EZ-TEC® IS A REGISTERED TRADEMARK OWNED BY SCIENTIFIC TOYS, LTD.
© 2012 SCIENTIFIC TOYS, LTD.
1108, TOWER B, 14 SCIENCE MUSEUM ROAD,
TSM SHATSUI, HONG KONG.
O.I. NO. 5156