

TO WHOM IT MAY CONCERN

Gothenburg, 29:th July 2020

MODEL DIFFERENCE LETTER, IC: 3724B-SH2D, FCC ID BXZSH2D

This letter is to explain the differences between the different variants of Ascom SH2 with the following model numbers:

Model	Description	FCC ID	IC ID
SH2-ABAA	Myco 3 WiFi only	BXZSH2	3724B-SH2
SH2-ADAA	Myco 3 WiFi + DECT	BXZSH2D	3724B-SH2D

SH2-ABAA contains disabled cellular circuitry (used in EU, unused in US), including antennas for 1.9GHz, and this disabled cellular circuitry are replaced with DECT circuitry.

SH2-ADAA is compared to SH2-ABAA, an overview.

- Wifi, NFC, GPS and Bluetooth circuitry, including its antennas has been kept as-is.
- Cellular antennas in SH2-ABAA also include the US range of DECT frequencies and has not been modified, nor it's matching network.
- Circuitry for cellular parts (2G+3G+4G) has been removed and has been replaced with DECT circuits.
- No other circuitry has been modified.

The differences in details:

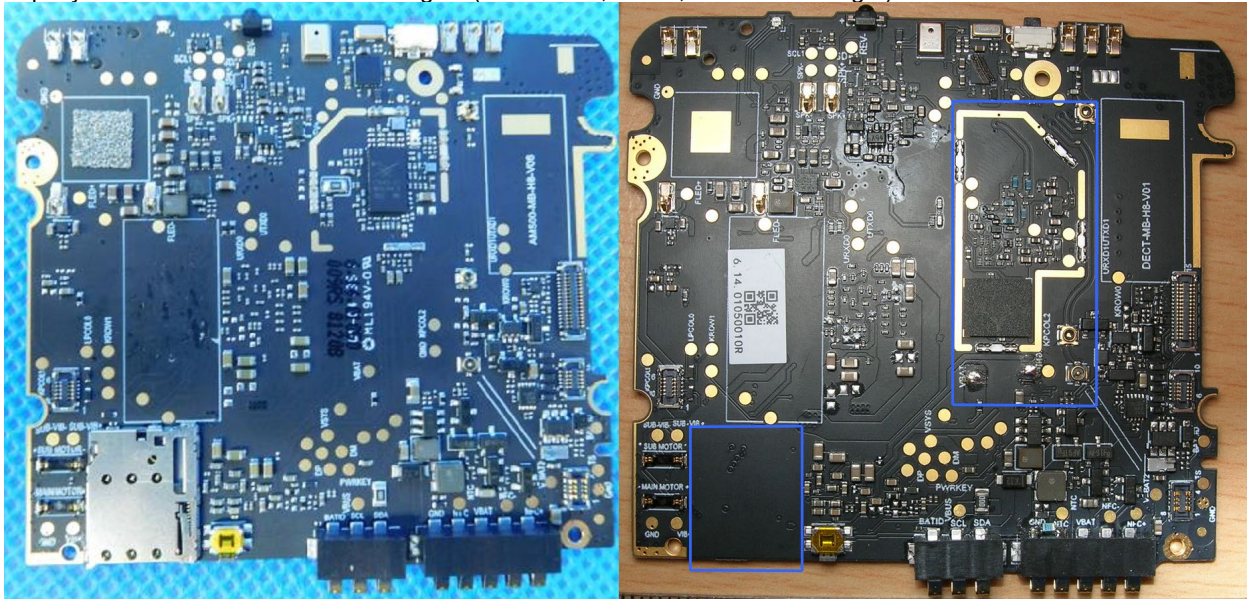
Internal images from BXZSH2 "Internal phones" (SH2-ABAA)

<https://apps.fcc.gov/eas/GetApplicationAttachment.html?id=4228169>



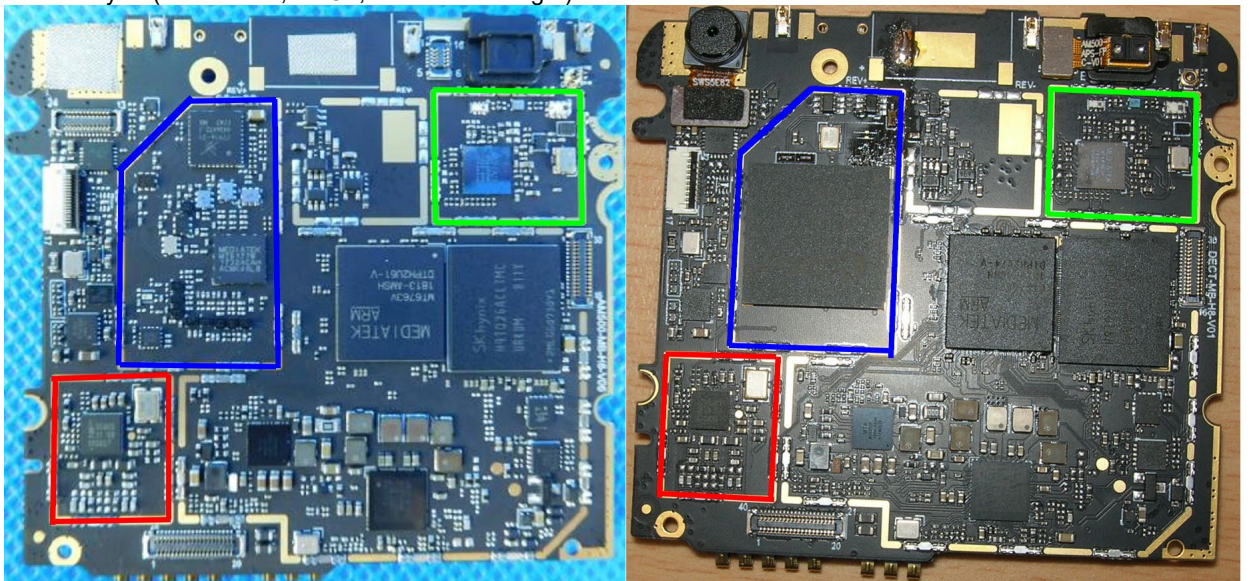
Antennas in the right picture are re-used as DECT antennas, not changed. Bottom PCB in not changed at all.

Top layer on the Bottom PCB has changes: (SH2-ADAA, DECT, variant to the right)



SIM card are removed, and RF frontend for Cellular are removed and replaced with a DECT counterpart in the blue squares.

Bottom layer: (SH2-ADAA, DECT, variant to the right)



NFC (Red square) + Wifi (Green square) are not changed in any way.
RF frontend for Cellular are removed and replaced with a DECT counterpart in the blue square.

Best regards,

Peter Söderberg
QA/RA Project manager

<p>Ascom Wireless Solutions Ascom (Sweden) AB Adress: Grimbodalen 2, SE-417 49 Göteborg Mail: P.O. Box 8783, SE-402 76 Göteborg, Sweden Phone: +46-31-559300 Fax: +46-31-552031 Website: www.ascom.com/ws Company reg. no.: 556336-6292 VAT no: SE556336629201 MNS no: 356107490 Head office: GÖTEBORG, Sweden</p>	 <p>CERTIFICATIONS: ISO 9001 ISO 14001 ISO 13485</p>
--	--