

Annex 2: Internal photographs to  
**TEST REPORT**  
No.: 6-0592-14-2-8a







According to:  
**FCC Regulations**  
Part 15.109

for

**ASCOM AB**

**SH1-ACAA**  
**Cellular/Wi-Fi Smartphone**  
(GPS & USB communication mode)

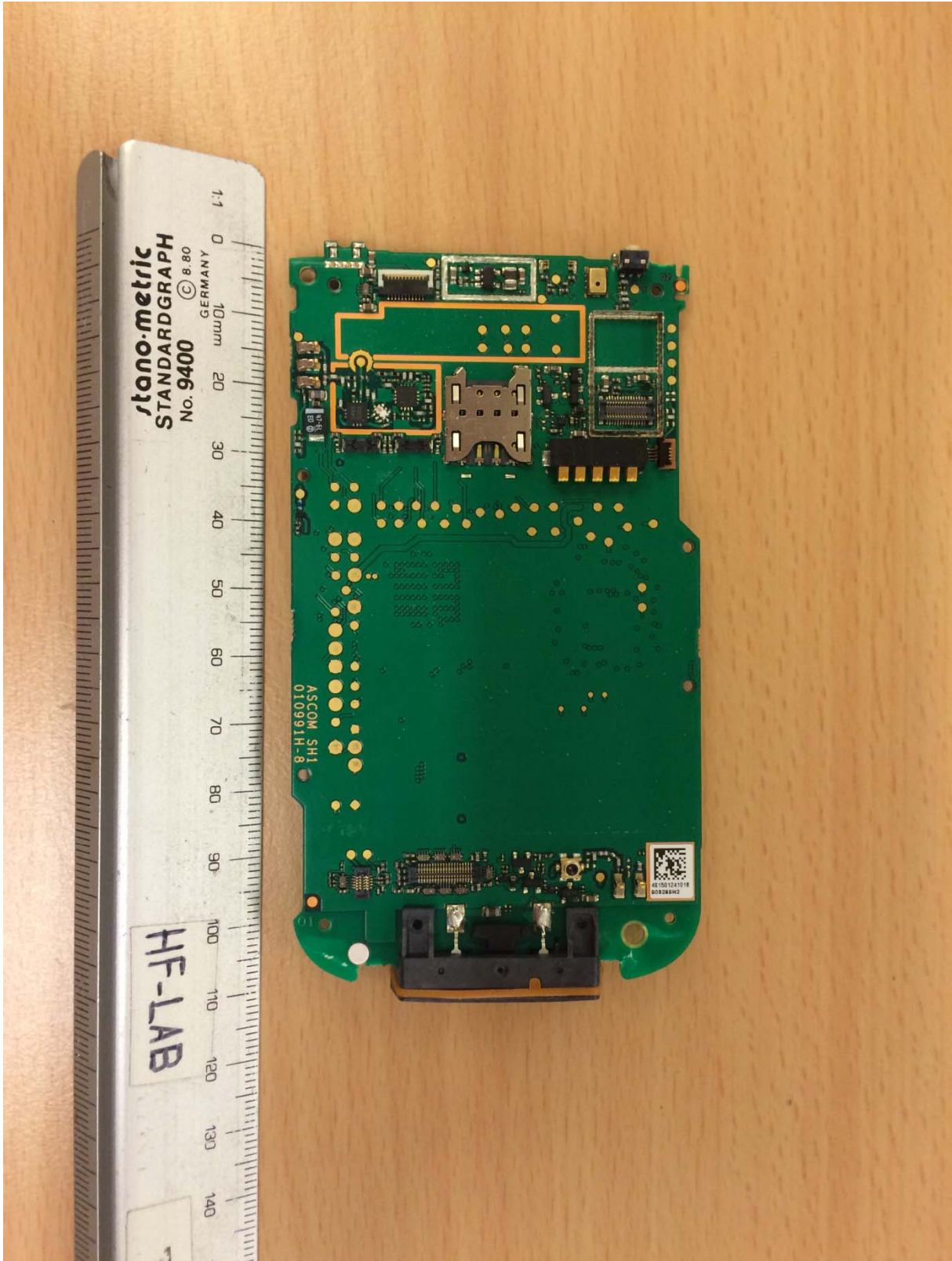
**FCC ID: BXZSH1C**

Laboratory Accreditation and Listings			
 <b>Deutsche Akkreditierungsstelle</b> D-PL-12047-01-01	 Reg. No.: 736496 MRA US-EU 0003	 Industry Canada Reg. No.: 3462D-1 Reg. No.: 3462D-2 Reg. No.: 3462D-3	 Voluntary Controls for Electromagnetic Emissions Reg. No.: R-2666 C-2914, T-1967, G-301
 <b>AUTHORIZED RF LABORATORY</b>	 <b>LAB CODE 20011130-00</b>		
accredited according to DIN EN ISO/IEC 17025			
<b>CETECOM GmbH</b> Laboratory Radio Communications & Electromagnetic Compatibility Im Teelbruch 116 • 45219 Essen • Germany Registered in Essen, Germany, Reg. No.: HRB Essen 8984 Tel.: + 49 (0) 20 54 / 95 19-954 • Fax: + 49 (0) 20 54 / 95 19-964 E-mail: info@cetecom.com • Internet: www.cetecom.com			

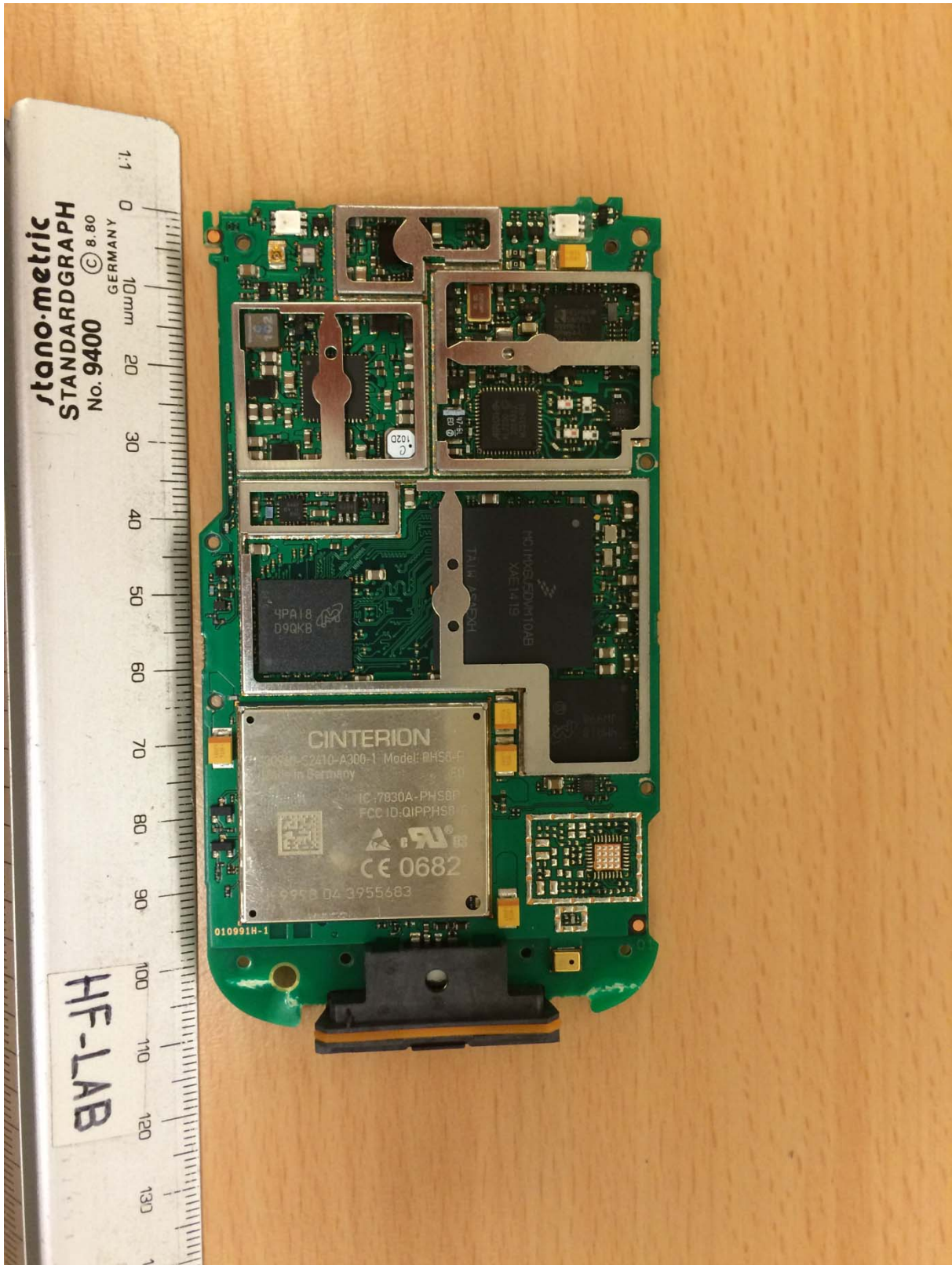
## Table of contents

1. INTERNAL PHOTOGRAPHS .....	3
-------------------------------	---

## 1. Internal photographs



**Photograph 1:** EUT inside, PCB side 1



Photograph 2: EUT inside, PCB side 2