

Annex 2: Internal photographs to
TEST REPORT
No.: 6-0592-14-2-8b

According to:
FCC Regulations
Part 15.109

for

ASCOM AB

SH1-ABAA
Wi-Fi Smartphone
(Continuous MP3 play + Camera mode)

FCC ID: BXZSH1B







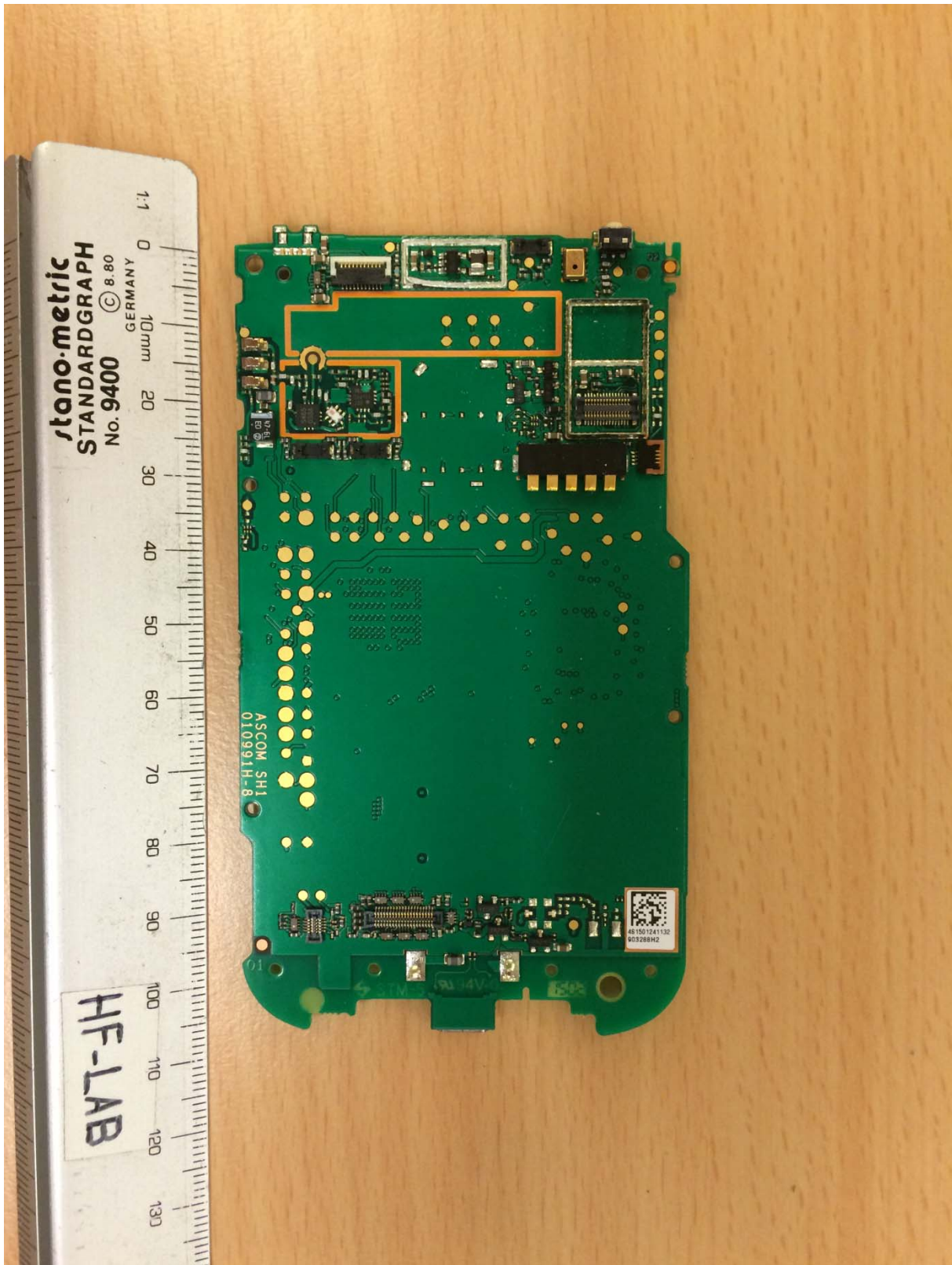
Laboratory Accreditation and Listings			
 <p>DAkKS Deutsche Akkreditierungsstelle D-PL-12047-01-01</p>	 <p>FEDERAL COMMUNICATIONS COMMISSION FC USA Reg. No.: 736496 MRA US-EU 0003</p>	 <p>Industry Canada Reg. No.: 3462D-1 Reg. No.: 3462D-2 Reg. No.: 3462D-3</p>	 <p>Voluntary Controls for Electromagnetic Emissions Reg. No.: R-2666 C-2914, T-1967, G-301</p>
 <p>WiFi ALLIANCE AUTHORIZED RF LABORATORY</p>	 <p>CTIA Authorized Test Lab LAB CODE 20011130-00</p>		
accredited according to DIN EN ISO/IEC 17025			
<p>CETECOM GmbH Laboratory Radio Communications & Electromagnetic Compatibility Im Teelbruch 116 • 45219 Essen • Germany Registered in Essen, Germany, Reg. No.: HRB Essen 8984 Tel.: + 49 (0) 20 54 / 95 19-954 • Fax: + 49 (0) 20 54 / 95 19-964 E-mail: info@cetecom.com • Internet: www.cetecom.com</p>			

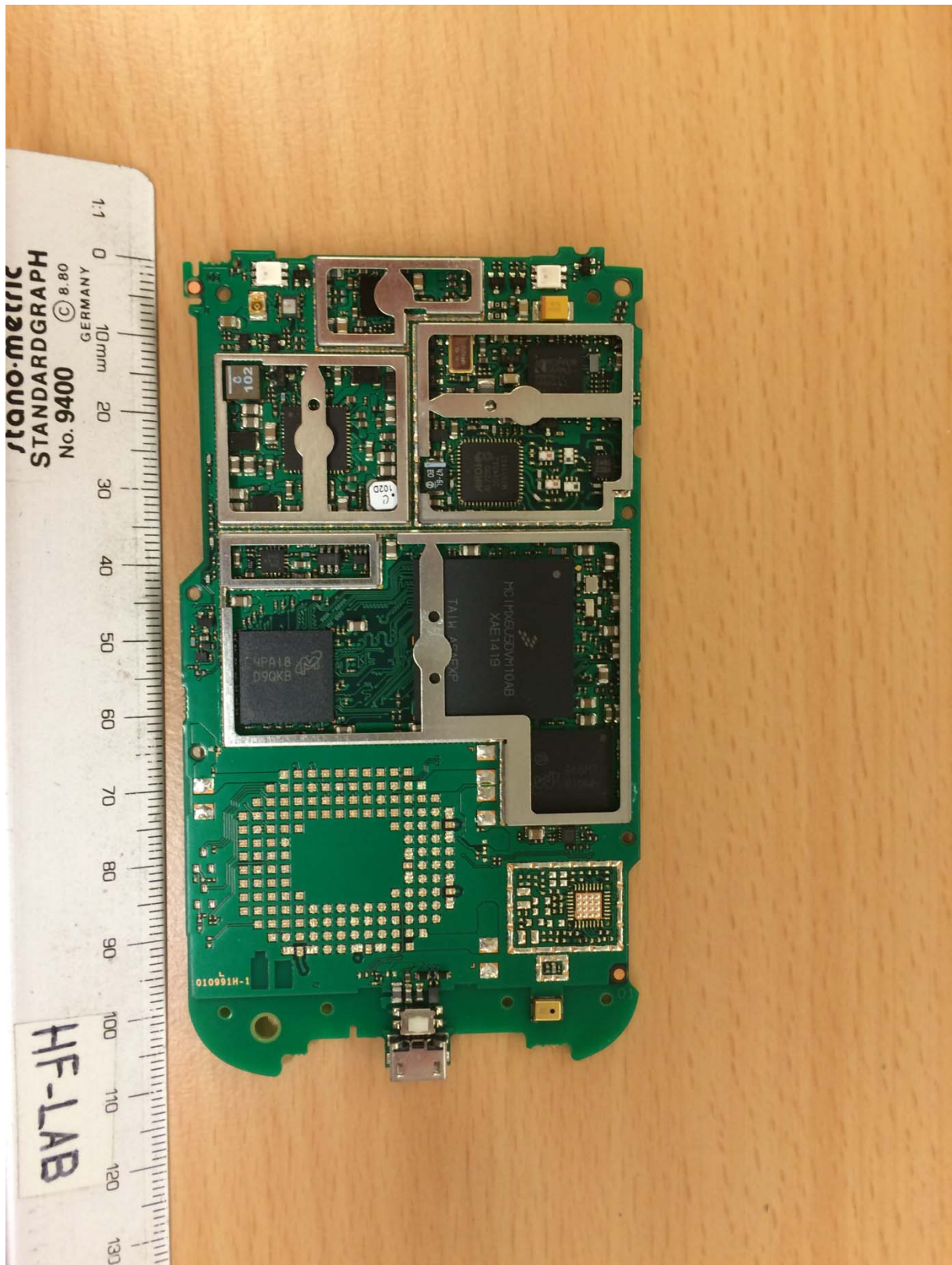
Table of contents

1. INTERNAL PHOTOGRAPHS3

1. Internal photographs



Photograph 1: EUT inside, PCB side 1



Photograph 2: EUT inside, PCB side 2