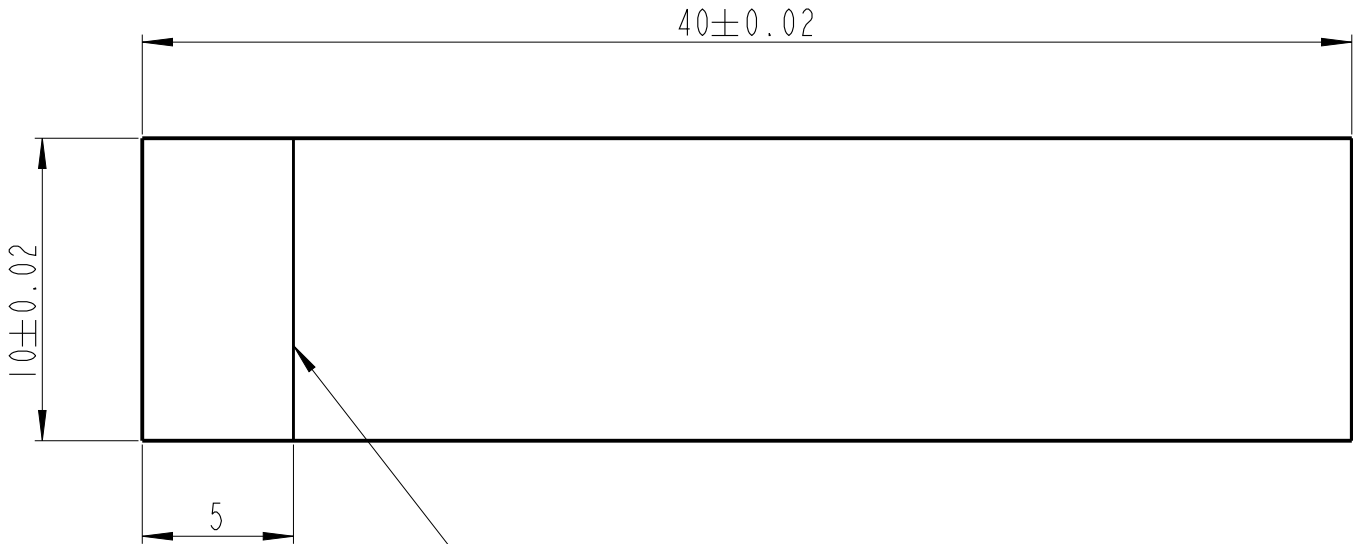


Note! This drawing shall not be duplicated or used for any purpose other than that for which provided. The information disclosed here is the property of Ascom, and except for rights explicitly granted by written consent, such information shall not be disclosed or disseminated whole or in part. Ascom reserves all rights in the event of the grant of patent, copyright, design, use, sale, manufacturing and reproduction rights there to.

Model version: B.1	Drawing version: A.1
Model modified? NO	Drawing modified? **
CAD Model Name:	M69302

Safety & Compliance	
Ex (!C):	NO
El.safety (!S):	NO
MDD:	NO

Rev		Change Description:	Change Date:	Changed By:	Approved By:
A					TBD



FAR SIDE (ADHESIVE): Perforate paper backing here to allow removal in two sections

Each section should have easy pull tab for removal



Notes:

1. Material: Self Adhesive Film, PET50K2411 PA-T1 8K
2. Digital shape model no.: M69302_A.igs and/or .stp is basis where dimensions are omitted
3. Label durability according to PGDQ2 or PGJ12
4. Label layout according to Ascom Agile /PLM-system
5. Color according to Ascom Agile /PLM-system
6. Tolerances according to ISO 2768-c
7. To be supplied with protective liner for adhesive
8. Purchasing cycle max 6 months to avoid adhesive deterioration before use
9. RoHS and REACH compliant

FUNCTIONAL DIMENSIONING The part described on this drawing is represented in graphic detail to show all of its features for the purpose of engineering documentation. Only those dimensions which affect the fit and function of the overall product assembly have been included for various purposes of inspection. Listed below All dimensions and drw note requirements shown shall be inspected and reported for initial part qualification. Dimensions noted with an "X" are critical dimensions and must be inspected according to a control plan in a reoccurring process. Dimensions noted with an "X" are process control (cp,cpk) dimensions and must be inspected and stored in a continuous process. All remaining features, not specified by dimension and tolerance, are cosmetic and mostly for the manufacturability of the part, but must still be approved by Ascom Engineering Department prior to initial qualification of the tool and part. The dimensional values for features not dimensioned are to be obtained from the Digital Shape Model (DSM) listed in the title block. The allowable tolerance on these features shall be as stated in the general tolerance chart ISO 2768 or GD &T "Profile of surface" symbol in the text note block.

Authoring Application: Creo Parametric					
Title: LABEL BLANK 10X40MM			General tolerances acc. to ISO		Scale:
			Dimensions acc. to ISO-2768		2:1
Resp. Engineer: <i>Nermin Hromic</i>			Originally Drawn By: <i>M Bodi</i>		Originally Approved: <i>Nermin Hromic</i>
			Drawing no. M69302		Revision: A
Creation Date: 2016-12-02			Format: A3		Sheet: 1/1

ascom

Gothenburg
Sweden