

User Manual

Ascom a51 Alarm Transmitter

Contents

1 Introduction	1
1.1 Abbreviations and Glossary	1
1.2 Ascom a51 Versions	2
2 Description	2
2.1 Ascom a51 Alarm Transmitter	2
2.2 Single Charger for Ascom a51 Alarm Transmitter	3
2.3 PCR Charging Rack	3
2.4 Accessories	4
3 Safety Instructions	5
4 Basic Operation	6
4.1 Switch the Alarm Transmitter On/Off	6
4.2 Mute the Beep/Vibrator/LED Signal	6
4.3 Charge the Battery	6
5 Alarm Functions	7
5.1 Push-button Alarms	8
5.2 Pull-cord Alarm	8
5.3 Man-down & No-movement Alarm	8
5.4 Acoustic Location Signal (ALS)	9
5.5 Location Function (IR or LF)	9
5.6 Special location	10
5.7 External alarm	10
5.8 Deactivate/activate Alarms	10
5.9 Show Status of the Alarm Transmitter	10
6 Operation Notice	10
6.1 Operation Condition	10
6.2 Maintenance and Repairs	11
7 Related Documents	12
8 Document History	13
Appendix A: Programming the Alarm Transmitter	14

1 Introduction

This document provides a description of the Ascom a51 Alarm Transmitter. The Alarm Transmitter is described in default programmed version but additional functions and factory settings are also included, providing a full description of the functionality.

Note that your system may not supply all functions described in this document. For information about your system, please contact your supplier.

The following documents are recommended as a complement:

- *System Description, Personal Security System, TD 90677GB*
- *System Description, On-site Paging System, TD 91034GB.*

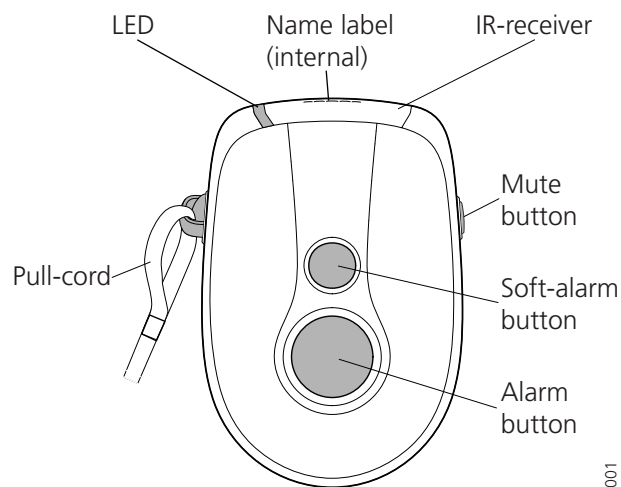


Figure 1. Ascom a51 Alarm Transmitter.

1.1 Abbreviations and Glossary

ALS	Acoustic Location Signal. A ramped up signal that can be played after an alarm from an Alarm Transmitter.
IR	Infra Red
LED	Light Emitting Diode
LF	Low Frequency
PCR	Portable Charging Rack
PDM	Portable Device Manager
SIM	Subscriber Identity Module
System 900	Generic term for telePROTECT, teleCOURIER and CTS 900 systems.

1.2 Ascom a51 Versions

The a51 Alarm Transmitter included in the Personal Security System, is easy to carry and operate and is designed to function in tough environments. It is available in two different versions, basic and advanced:

	a51 Basic	a51 Advanced
Push-button alarms	Yes	Yes
Pull-cord alarm	Yes	Yes
Vibrator alert	Yes	Yes
Man-down & No-movement alarm	No	Yes
Acoustic Location Signal (ALS)	No	Yes
Location function (IR and LF)	No	Yes
Battery check function	Yes	Yes

Alarms are transmitted on the UHF band 420-475 MHz. The code format is compatible with the System 900, which means that functions and units from the two systems can be integrated with each other.

2 Description

2.1 Ascom a51 Alarm Transmitter

Case

The case is made of durable PC/ABS plastic and is IP40 classified. The Alarm Transmitter also fulfils IEC 68-2-32 procedure 1, which makes it drop proof from one meter onto concrete.

Antenna

The antenna used for communicating with the fixed system is integrated in the Alarm Transmitter. This makes the Alarm Transmitter robust and easy to handle.

Top

The transparent smoke coloured top covers the IR receiver, integral name label. On the top is also the LED.

Buttons

The Alarm Transmitter has three buttons, see also [figure 1](#) on page 1:

Alarm button, big button on the front of the handset, for sending alarm. The button can also be used for test alarm. The function of this button is configurable.

Soft-alarm button, small button marked with "!" used as a request for discreet assistance. The button can also be used for test alarm. The function of this button is configurable.

Mute button, button on the right side, used to silence the beep, vibrator and LED signal including the Acoustic Location Signal (ALS).

Clip

On the back of the Alarm Transmitter there is a clip used to fasten the Alarm Transmitter to, for example, the belt or pocket.

Battery

The battery placed behind the battery lid is a rechargeable Li-Ion battery.

SIM Card

All personal settings in the Alarm Transmitter are programmed and stored in the Subscriber Identity Module (SIM) card. The SIM card can easily be moved to another Alarm Transmitter. By this it is easy to keep personal settings, such as identity and alert signal. This can be handy in case of break down or when changing operation environment and switching Alarm Transmitter.

Pull-cord (Option)

The pull-cord is made of an ABS attachment connected to a canvas ribbon. The end of the ribbon has a clip which must be safely attached, for example, to the clothes. The Pull-cord is also used as a security string, which prevents the Alarm Transmitter to, for example, fall on the ground.

The Alarm Transmitter can be used without the Pull-cord option. Remove the Pull-cord and plug the hole with the provided ABS lid.

2.2 Single Charger for Ascom a51 Alarm Transmitter

The Single Charger is a separate unit used for charging the Alarm Transmitter. It is connected to a power supply. The power supply has four exchangeable plug-in contacts which fit into an ordinary wall socket in many countries.

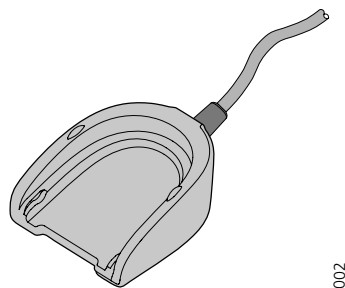


Figure 2. Single Charger for Ascom a51 Alarm Transmitter.

For further information about the Single Charger refer to its Data Sheet TD 92353GB.

2.3 PCR Charging Rack

The wall mounted PCR Charging Rack is used for charging Ascom a51 Alarm Transmitters. The Charging Rack is a modular system that consists of a master module (PCR-M), extension modules (PCR-E) and power supplies. Each Charging Rack module has six charging slots.

One PCR-M can support up to 20 PCR-E, which gives a charging possibility of 126 Alarm Transmitters. A power supply feeds up to three Charging Rack modules (one PCR-M and two PCR-E), which results in seven power supplies for the above example.

Alarm Transmitters with a pull-cord and/or a security string can be charged in the PCR Charging Rack without removing the pull-cord or security string.

For further information about the PCR Charging Rack refer to its Data Sheet TD 92355GB and Installation Guide TD 92356GB.

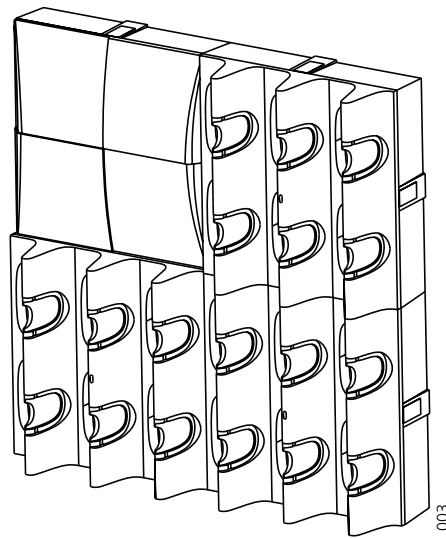


Figure 3. PCR Charging Rack with power supply, one PCR-M and two PCR-E.

2.4 Accessories

Leather case

As accessory, there is a leather case especially designed for the Alarm Transmitter used to increase the protection of wear and tear. It is possible to use the Alarm Transmitter while it is placed in the case. The clip of the Alarm Transmitter is not necessary to remove.

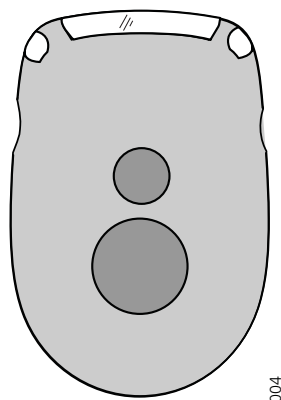


Figure 4. Leather case for the Ascom a51 Alarm Transmitter.

Security String

See [Pull-cord \(Option\)](#) on page 3.

Name label kit

For the Alarm Transmitter, a name label kit can be ordered. The internal name label is possible to use for own means of identification.

3 Safety Instructions

Read this chapter before using your a51 Alarm Transmitter.

For safe and efficient operation of your Alarm Transmitter, observe the guidelines given in this manual and all necessary safety precautions when using the Alarm Transmitter. Follow the operating instructions and adhere to all warnings and safety precautions located on the product, the Quick Reference Guide and this User Manual.

Charging

This product shall only be used with the following batteries:

P/N: 660089 Battery

Desktop chargers shall only be connected with power adapters supplied by the manufacturer.

Available power adapter:

P/N: FW7650/05 Power supply unit AC/5V DC/1A

Warranty notification

Do not disassemble the Alarm Transmitter. Disassembling the handset voids the warranty. The a51 Alarm Transmitter consists of no consumer serviceable components. Service should be performed only by Authorized Service centre.

Modifications

Changes or modifications to the equipment not expressly approved by the party responsible for compliance could void the user's authority to operate the equipment.

FCC compliance statements

This equipment has been tested and found to comply with the limits for a Class B digital device, pursuant to part 15 of the FCC Rules. These limits are designed to provide reasonable protection against harmful interference in a residential installation. This equipment generates, uses and can radiate radio frequency energy and, if not installed and used in accordance with the instructions, may cause harmful interference to radio communications. However, there is no guarantee that interference will not occur in a particular installation. If this equipment does cause harmful interference to radio or television reception, which can be determined by turning the equipment off and on, the user is encouraged to try to correct the interference by one or more of the following measures:

- Reorient or relocate the receiving antenna.
- Increase the separation between the equipment and receiver.
- Connect the equipment into an outlet on a circuit different from that to which the receiver is connected.
- Consult the dealer or an experienced radio/TV technician for help.

Information to user

This device complies with Part 15 of the FCC Rules. Operation is subject to the following two conditions:

- (1) this device may not cause harmful interference, and
- (2) this device must accept any interference received, including interference that may cause undesired operation.

4 Basic Operation

Note: The Ascom a51 Alarm Transmitter may have functions other than described here, depending on the pre-programmed parameters.

4.1 Switch the Alarm Transmitter On/Off

Insert/remove the battery.

4.2 Mute the Beep/Vibrator/LED Signal

Press the Mute button.

4.3 Charge the Battery

Three battery levels exist:

- OK
- Warning
- Shutdown

During the battery warning phase, a beep signal played once each 10 s. during one minute and a fast flashing red LED indicates a low battery. Place the Alarm Transmitter in a Single Charger or a wall mounted Charging Rack. If a Charging Rack is used for charging, just insert the Alarm Transmitter without opening the clip, to make it fasten securely. Be sure to hear a beep and see the LED charging indication when inserting the Alarm Transmitter in the charging rack.

A slowly flashing orange LED indicates charging. A green steady LED indicates a fully charged battery. It takes approximately two hours to fully charge the battery. Note that it is normal for the battery to get slightly warm while charging.

If the battery level goes below the shutdown level, a shutdown warning beep is played for 10 s. after which the Alarm Transmitter enters deep sleep. The best way to wake up the Alarm Transmitter from deep sleep is to put it into a Single Charger or wall mounted Charging Rack. It is also possible to make a cold start, see [4.1 Switch the Alarm Transmitter On/Off](#) on page 6.

Note: While the Alarm Transmitter is attached to the Single Charger or put in the wall mounted Charging Rack, only the push-button alarms (Alarm- and Soft-alarm button) and the Pull-cord alarm are enabled. This means that, if existing, Man-down & No-movement alarms are deactivated. The Location Function (IR and LF) is also deactivated. (If a push-

button alarm is sent, the last stored location before charging the Alarm Transmitter, is sent).

Note: If the Alarm Transmitter is put into the charger during the shutdown warning beep, the beep will stop and the Alarm Transmitter will not enter deep sleep at this time.

Note: Check the battery status every time you start to use the Alarm Transmitter. It is recommended that the Alarm Transmitter is charged daily. This is even more important when the Alarm Transmitter is used in temperatures below 0°C.

5 Alarm Functions

In order to assure a safe transmission of an alarm to the system, every alarm is sent in two sequences. The number of times to resend an alarm in each sequence is configurable with parameters.

A beep/vibrator/LED signal can confirm that an alarm has been sent. These feedback signals of a sent alarm are all configurable.

The alarms are handled by FIFO (First In First Out) and thus no alarm prioritation is made by the system.

Common alarm configurations

The following parameters are common for the Test alarm, Alarm, Soft-alarm, Man-down & No-movement and Pull-cord alarm types.

- Number of alarm transmissions per sequence
- Beep feedback
- LED feedback
- Vibrator feedback
- Alarm deactivation (Only Man-down & No-movement alarm)

5.1 Push-button Alarms

Test alarm

Press the Alarm- or Soft-alarm button for at least one second. Depending on set parameters, a beep is heard, the green LED flashes once and the vibrator stirs.

Note: To test the Alarm Transmitter and system, a test alarm should be sent every day.

Alarm

Press the Alarm push-button twice or more. Depending on set parameters, a beep is heard, the green LED flashes once and the vibrator stirs.

Soft-alarm

This alarm can be used as a request for discreet assistance.

Press the Soft-alarm push button twice or more. Depending on set parameters, a beep is heard, the green LED flashes once and the vibrator stirs.

Configuration of push-button alarms

The following parameters are configurable:

- Alarm type for multiple press
- Alarm type for single press (long press 1 s. by default)
- Time of push-button press for single press
- Number of presses for multiple press alarm
- ALS

5.2 Pull-cord Alarm

An alarm is sent when the pull-cord is pulled off the Alarm Transmitter. Depending on set parameters, a beep/vibrator/LED signal confirms that the alarm has been sent.

Note: Make sure that the clip of the Pull-cord is safely attached to the clothes. To make a test, remove the battery of the Alarm Transmitter, pull the Alarm Transmitter and make sure that the pull-cord releases first.

Configuration of Pull-cord Alarm

- ALS

5.3 Man-down & No-movement Alarm

Man-down alarm: The Alarm Transmitter is tilted more than 55° for a preset time, for example when falling.

No-movement alarm: Movement is not detected during a pre-set time.

Before the alarm is sent, the Alarm Transmitter enters a warning phase called Man-down/No-movement Warning (MDW), with a repeated warning tone (default: 7 seconds). The beep signal always starts with a pair of low volume beeps and then continues with high volume beeps, and is alternating with the vibrator.

Press the Mute button during this warning phase to prevent the alarm from being sent.

If the Mute button is not pressed an alarm is sent. Depending on set parameters, a beep/vibrator/LED signal confirms that the alarm has been sent.

Extra Delay

If the parameter "Extra delay" is enabled, the detection of Man-down & No-movement alarm can be disabled for 10 minutes. When the warning signal sounds, press and hold the Mute button to delay the next warning signal 10 minutes. One long beep followed by vibrator indicates that the Extra delay is set.

Configuration of Man-down & No-movement Alarm

The following parameters are configurable:

- Time of Man-down detection phase (time of a tilted state)
- Time of No-movement detection phase (time of a non moving state)
- Time of Man-down/No-movement Warning (MDW) phase
- ALS activation
- Extra delay activation

5.4 Acoustic Location Signal (ALS)

Depending on set parameters, the ramped up Acoustic Location Signal (ALS) is played after an alarm. The signal is always ramped from the lowest volume to the highest. Press the Mute button to turn the ALS off.

5.5 Location Function (IR or LF)

The location of the Alarm Transmitter, received via either infrared light (IR) or low frequency transmission (LF), is automatically sent along with an alarm.

If both IR and LF are enabled, the Alarm Transmitter first handles IR and then LF. If a location is detected, the location function is put to sleep until the next scan interval, which is defined by a parameter. Depending on set parameters, a beep signal and/or a flashing green LED indicates that a location (a new or the same) has been received.

Note: An Ascom a51 Alarm Transmitter with an IR-receiver must always be visible, never covered, see [figure 5](#) below.

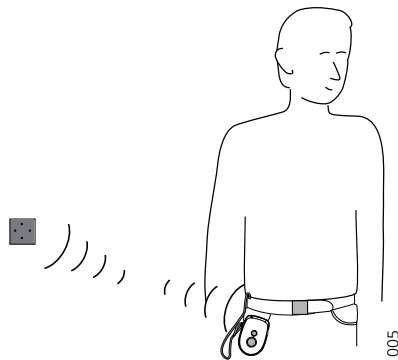


Figure 5. IR-function of Alarm Transmitter.

The following parameters are configurable:

- Reading of location code interval
- Beep activation when receiving the location
- LED activation when receiving the location

5.6 Special location

If the fixed locators are set to send a "special location code", the portable automatically can send an alarm directly after it has received the code.

5.7 External alarm

The portable can send an alarm when triggered by an incoming external alarm signal. A Single Charger has to be modified for this purpose, see *Configuration Manual, Ascom a71 Alarm Transceiver and p71 Transceiver, TD 92439*.

5.8 Deactivate/activate Alarms

If this parameter is set, the Man-down & No-movement alarm can be turned off/on by pressing twice on the Mute button. Depending on set parameters, a beep is heard, the green LED flashes twice and the vibrator starts when indicating deactivation/activation of alarms. See also [5.9 Show Status of the Alarm Transmitter](#) below.

Note: The Alarm and Soft-alarm push-buttons and Pull-cord alarm are always enabled.

5.9 Show Status of the Alarm Transmitter

LEDs	Status
Green steady:*	Battery OK, all alarms active.
Green slow flashing:*	Battery OK, Man-down/No-movement alarm deactive.
Red fast flashing:*	Low battery indication
Red steady:	Fatal error
Orange flashing:	Charging

*Press and hold the Mute button to see the status.

6 Operation Notice

6.1 Operation Condition

Alarm Transmitter

Only use the handset in temperatures from -10 °C to +55 °C. Avoid exposing in direct sunlight and other heat sources.

Protect your Alarm Transmitter from aggressive liquids and vapours. Keep the Alarm Transmitter away from strong electromagnetic fields and explosive environments.

Battery

Do not immerse in water or throw into fire. Use the Single Charger or wall mounted Charging Rack for charging. Charge the battery for at least two hours the first time you use it. See also [4.3 Charge the Battery](#) on page 6.

6.2 Maintenance and Repairs

Use only original accessories. Installation and repairs should be done by authorised personnel only.

Keep the recharging contacts on the Alarm Transmitter away from metallic and greasy objects.

Replace the Battery

Two plastic, ribbed plates at the back of the Alarm Transmitter are used to lock/unlock the battery lid.

Open the battery lid: Pull the plates upwards to release the battery lid, see (1) in [figure 6](#) below. Put the battery into the battery compartment (2). Put on the battery lid and close it by pulling the plates downwards (3).

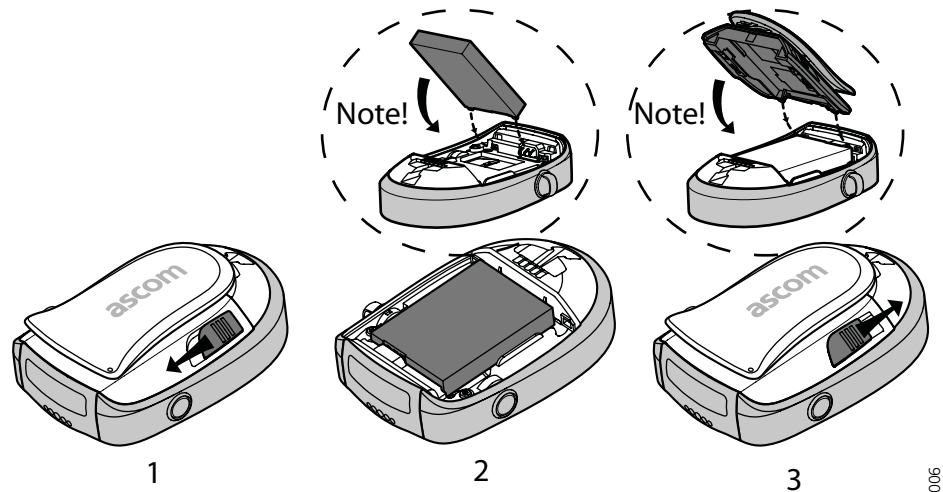


Figure 6. Battery replacement.

Remove the SIM Card

Note: It is recommended that the SIM card is changed in an environment without static electricity.

- 1 Remove the battery, see section [Replace the Battery](#) above. The SIM card is placed under the battery unit in a hatch. See 1 in [figure 7](#) on page 11: Press down the flexible stop (1) and move the SIM card back as far as possible (2). Be sure that the SIM card is entirely out of the hatch before removing it. The easiest way to ensure this is to turn the Alarm Transmitter upside down and let the SIM card falls out in your hand.
- 2 Replace the SIM card with a new, see 2 in [figure 7](#) on page 11: Put down the SIM card so it lies flat on the flexible stop (1) and push it carefully into the hatch (2).

Note: Be careful not to bend the SIM card.

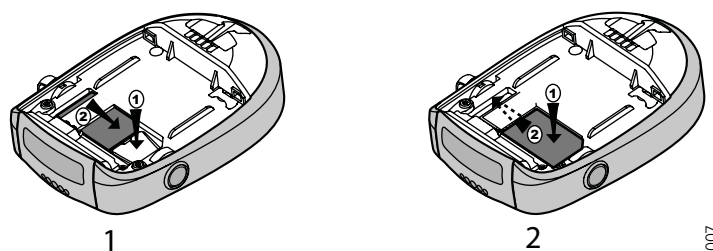


Figure 7. Removal and replacement of the SIM card.

Replace the Name Label

Open the battery lid, see section [Replace the Battery](#) above, replace the old name label with a new from the Name label kit (extra ordered).

Restore the Clip

The clip has a special release function to prevent it from breaking when strained. When the clip is released and becomes slack, just snap it back with a hard press.

If the clip has fallen entirely off its fastening, perform the following:

- 1 Put the axle of the link clip in the closed hole on the clip, see 1.
- 2 Push the axle until it snaps into the open hole in the clip.
- 3 Snap the clip to the Alarm Transmitter with a hard press.

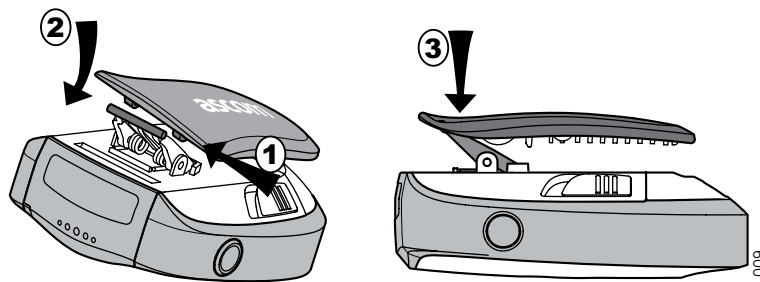


Figure 8. How to restore the clip.

7 Related Documents

Installation and Operation Manual, Portable Device Manager

TD92325GB

8 Document History

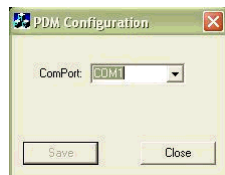
For details, see change bars in the document.

Version	Date	Description
A	2006-04-03	First released version
B	2006-05-09	Minor updates
C	2007-03-15	Update with safety instructions, special location and external alarm

Appendix A: Programming the Alarm Transmitter

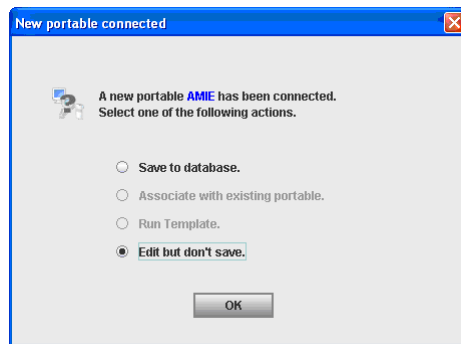
The Ascom a51 Alarm Transmitter parameters can be programmed using the Portable Device Manager (PDM) software PDM-SB. To program the Alarm Transmitter do as below:

- 1 Connect the RS232 Programming Adapter to the computer.
- 2 The computer COM port corresponding to the RS232 Programming Adapter and the COM port settings for the PDM software must match. The PDM software uses default COM port 1, but can be changed as follows:
 - 1) In the *Start* menu, select PDM Configuration.
 - 2) In the *PDM Configuration* window, select desired COM port > Save.

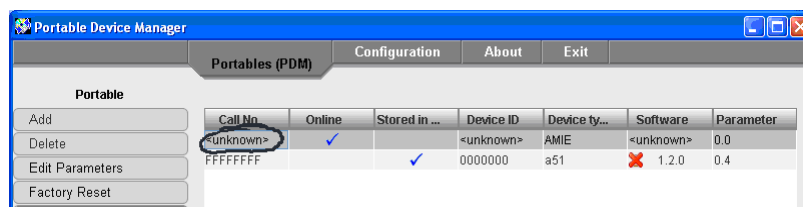


- 3 Start the PDM application.
- 4 Connect the Ascom a51 Alarm Transmitter to the RS232 Programming Adapter.
- 5 For instructions on how to use the PDM, see Installation and Operation Manual, Portable Device Manager (PDM), TD 92325GB.

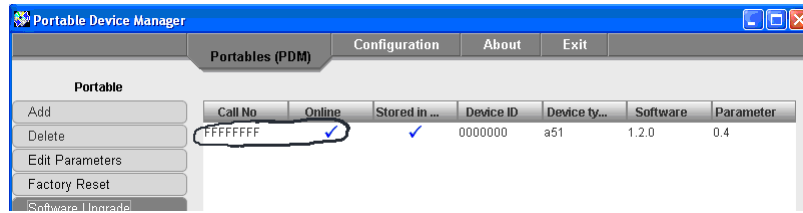
Note: If the software upgrade of the Ascom a51 Alarm Transmitter is interrupted, for example if the cable is removed, the a51 Alarm Transmitter turns to download mode (shown by a steady red LED). When the a51 is connected again, the *New portable connected* window appears. Select "Edit but don't save" > OK, see figure below.



The a51 Alarm Transmitter is added as an "unknown" entry in the PDM, see figure below.



Repeat the software upgrade for this unit again. The software upgrade is successfully performed when the Call No. of the portable changes from <unknown> to its real Call No. and gets online, see figure below.



Editing Parameters

When delivered, the Alarm Transmitter parameters usually is pre-programmed. If any settings should be changed, the PDM can be used to edit the parameters.

For instructions on how to edit parameters, see *Installation and Operation Manual, Portable Device Manager (PDM), TD 92325GB*.

Note: If the ascom a51 Alarm Transmitter is ordered without customer programming, the UserID has to be set before editing other parameters.

Upgrading the Firmware

Follow the instructions in *Installation and Operation Manual, Portable Device Manager (PDM), TD 92325GB*.