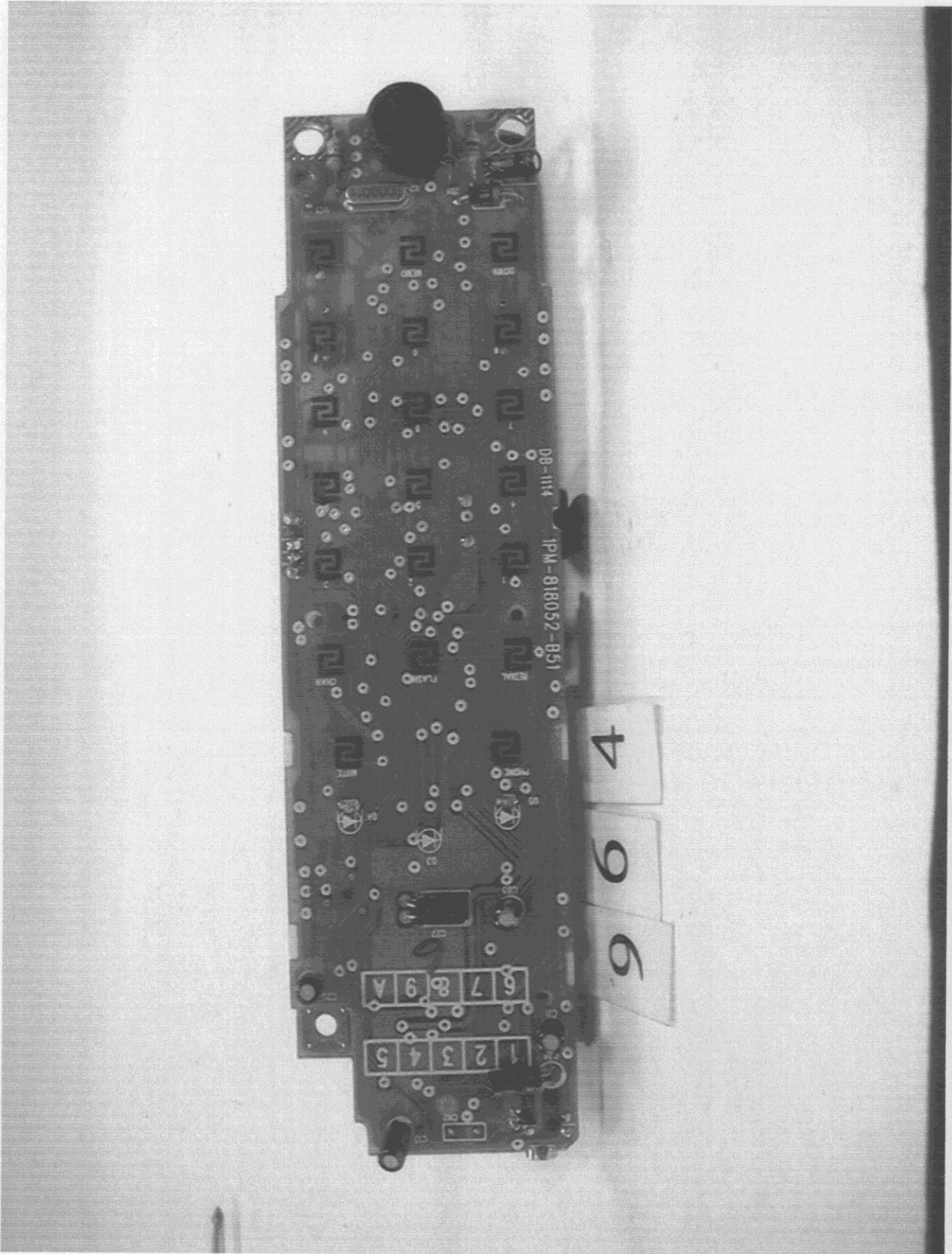


4

6

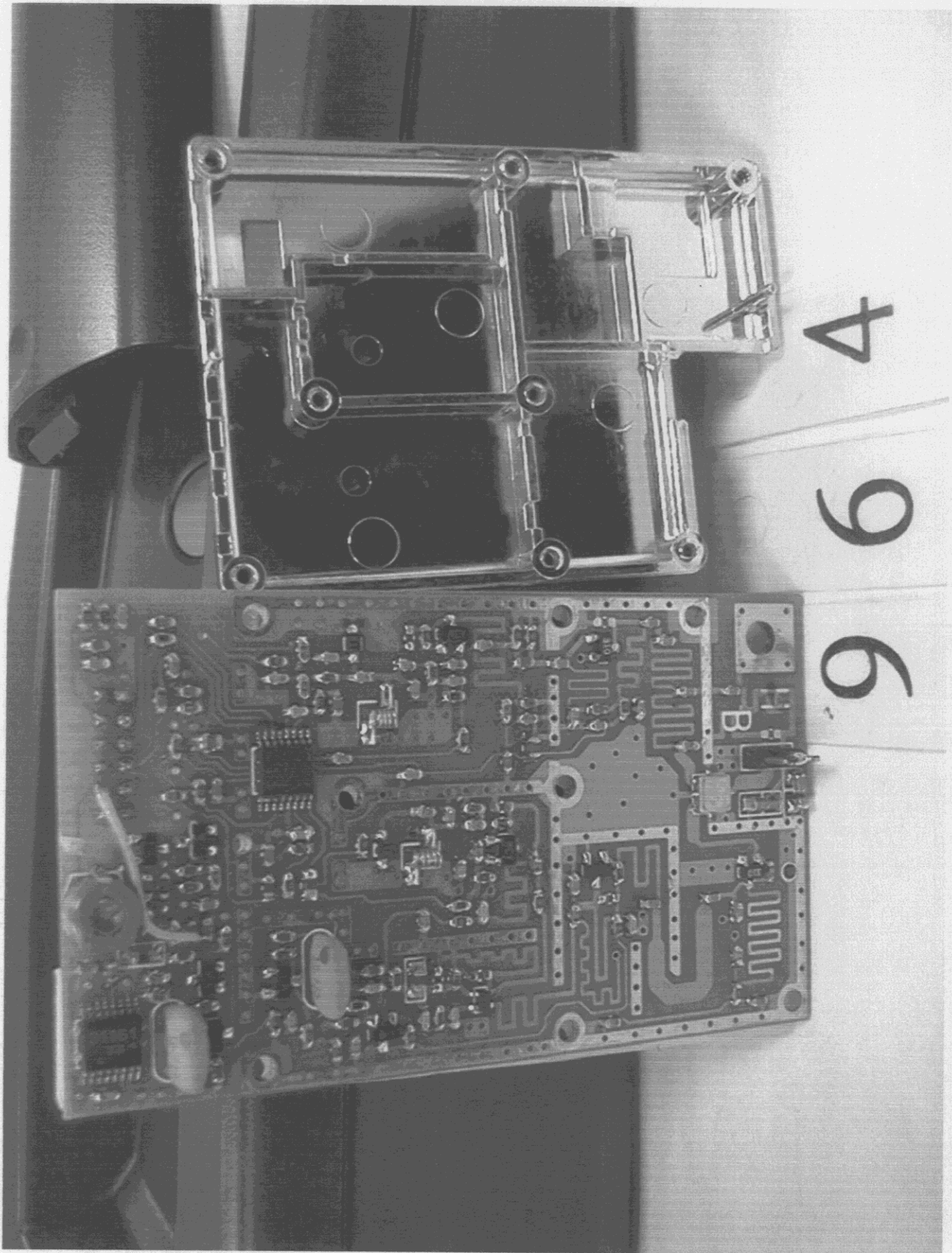
9



964

1 2 3 4 5  
6 7 8 9 A

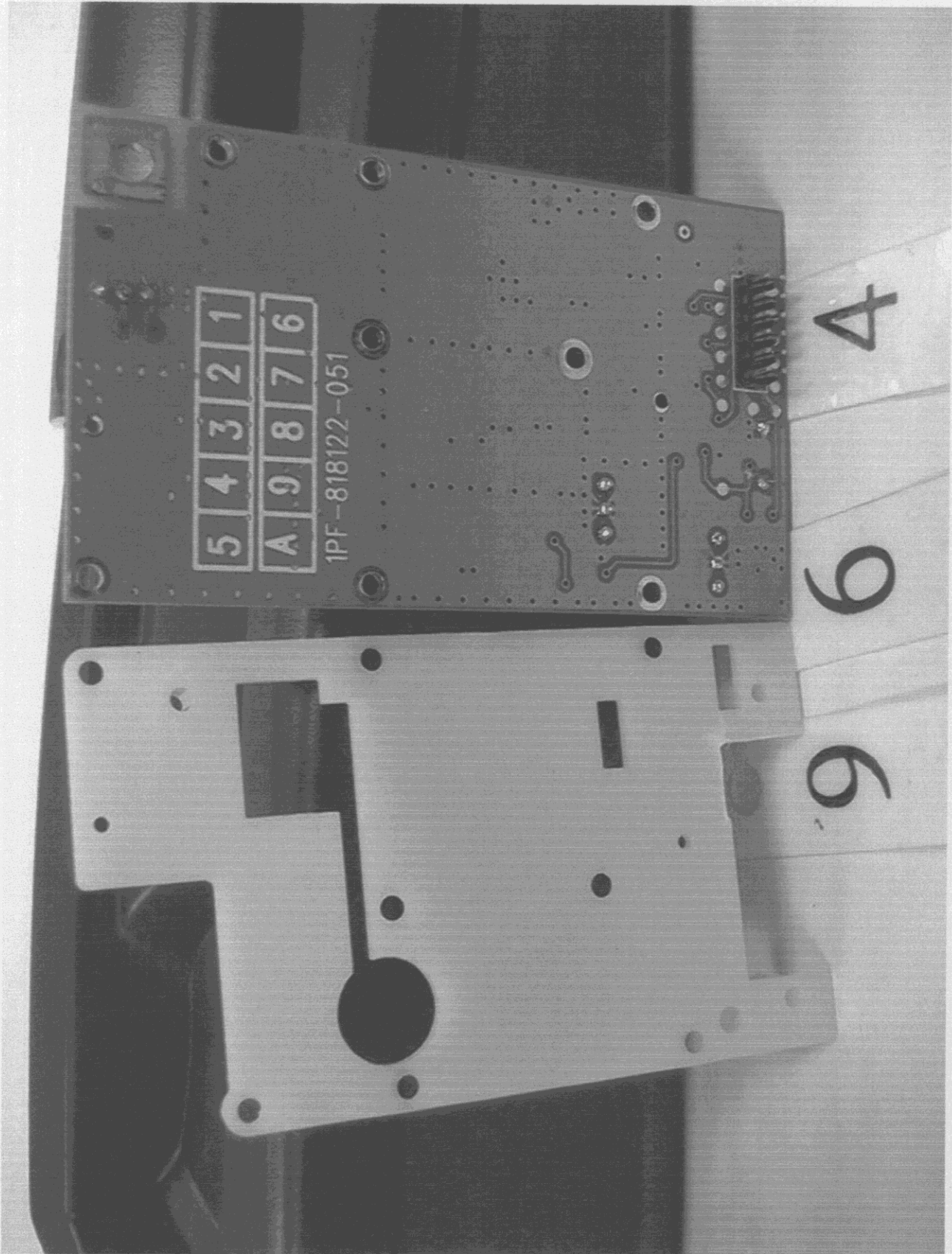
08-1114  
1PM-818052-851



9

6

4



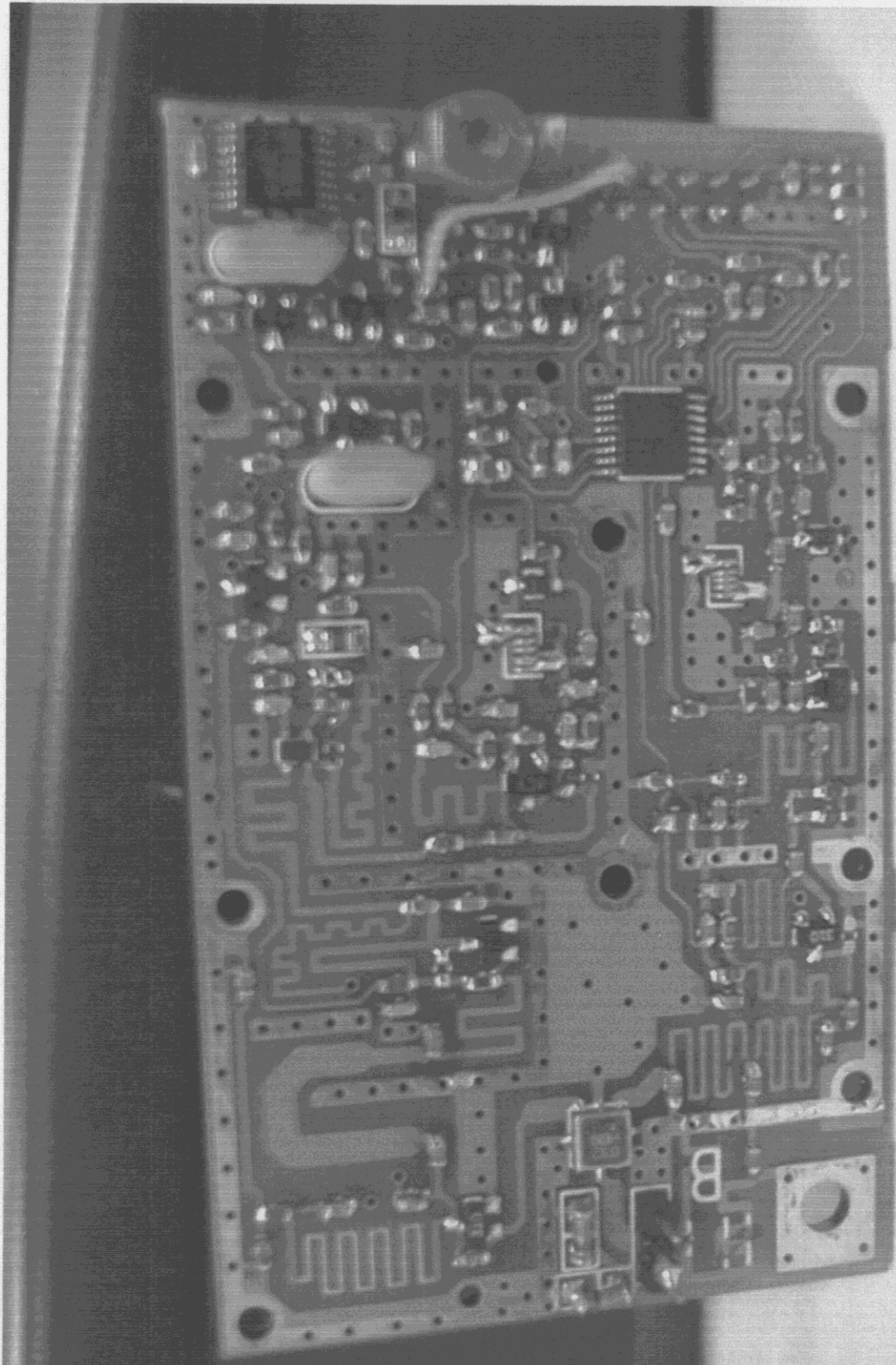
5 4 3 2 1  
A 9 8 7 6

1PF-818122-051

4

6

9



4

6

9

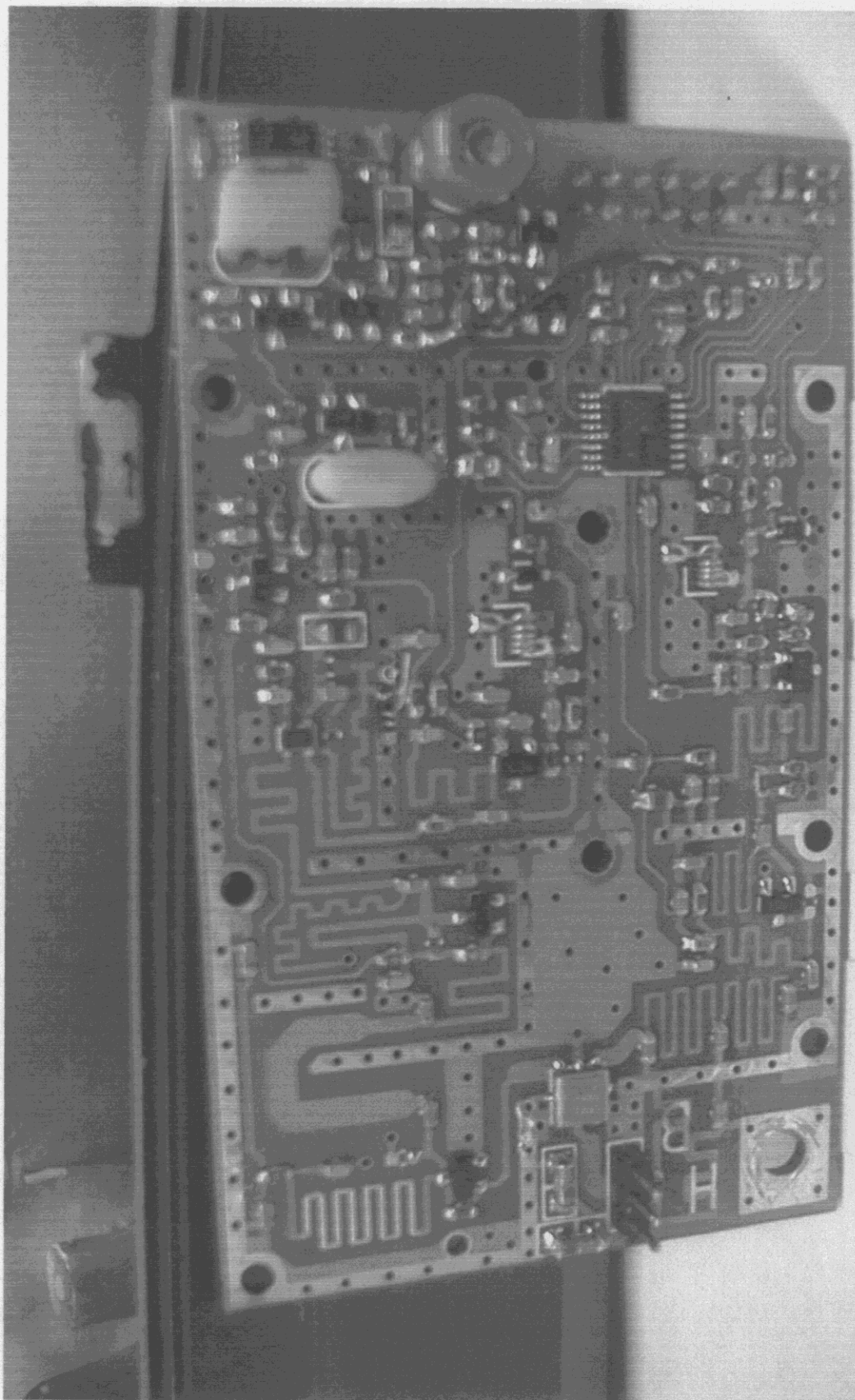
5	4	3	2	1
A	9	8	7	6

1PF-818122-051

4

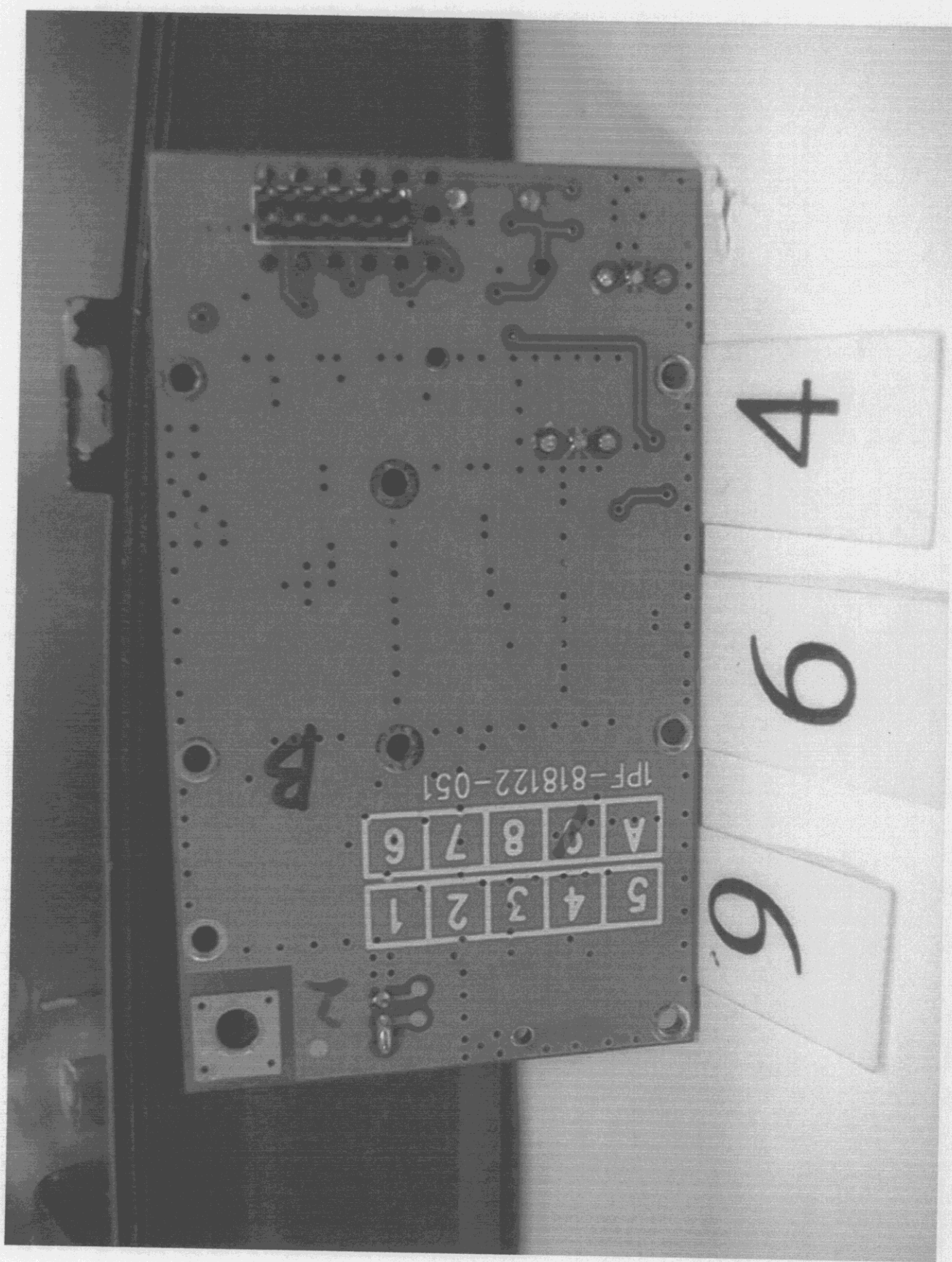
6

9



9 6 4





4

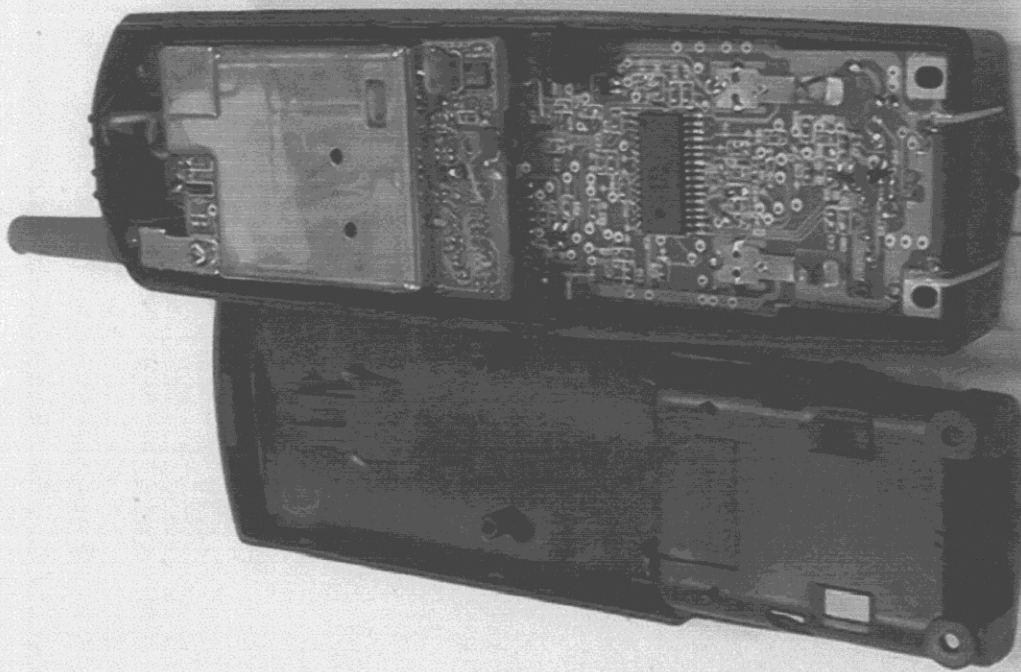
9

6

1PF-818122-051

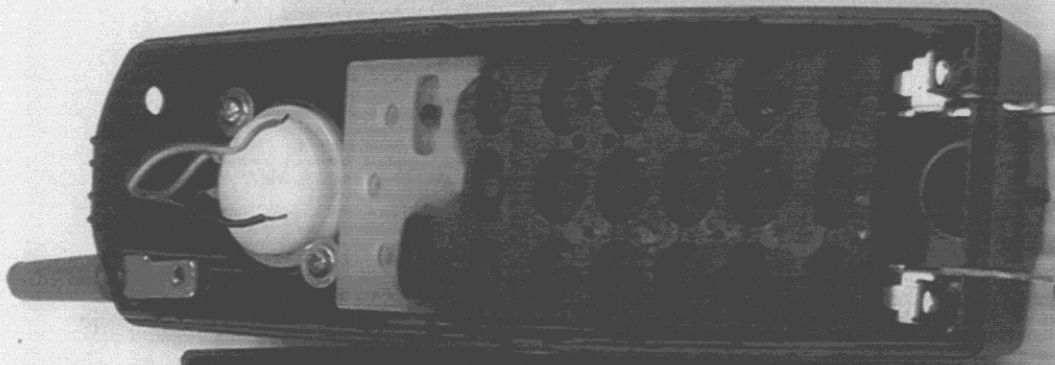
B

5	4	3	2	1
A	9	8	7	6

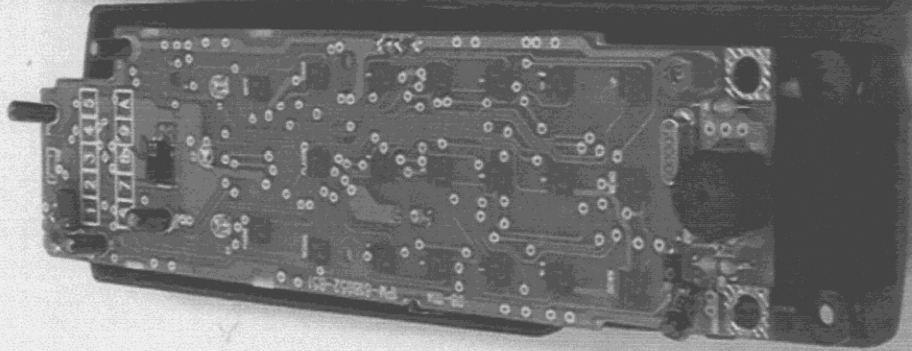


4

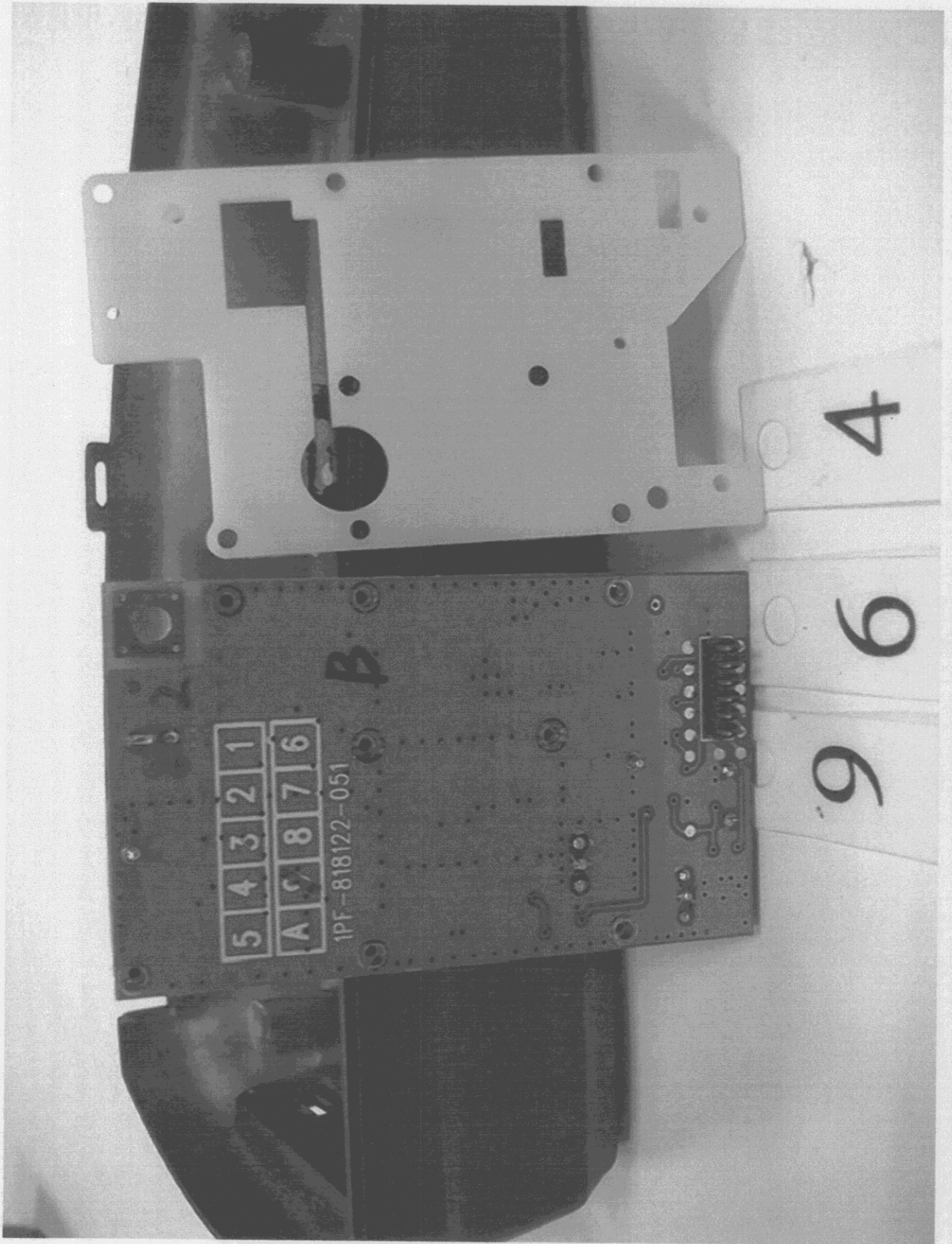
96



9 6 4



9



5 4 3 2 1  
A 8 7 6

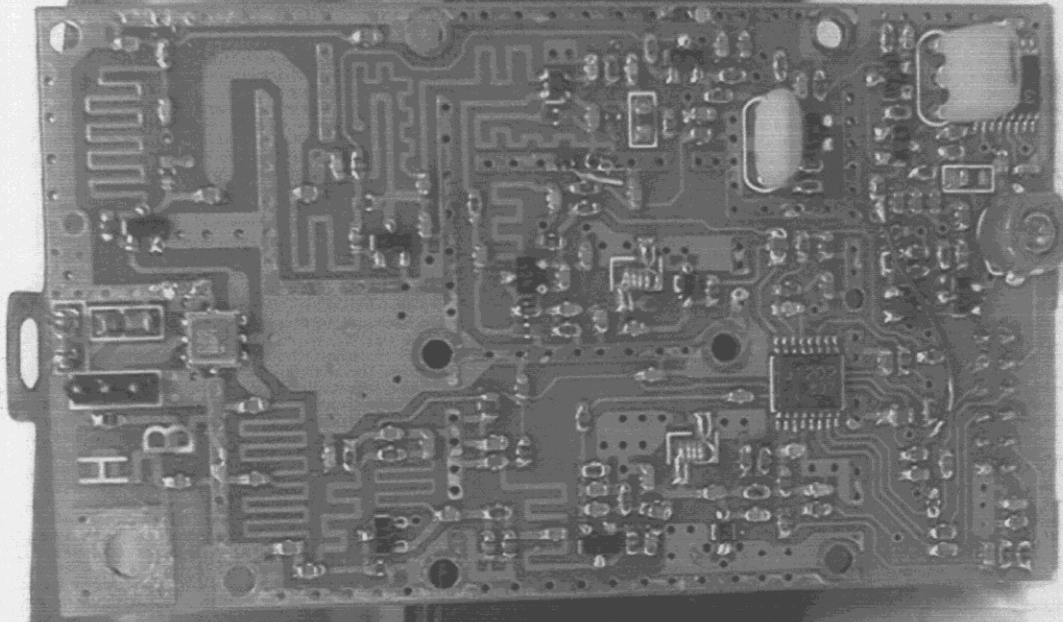
IPF-818122-051

B

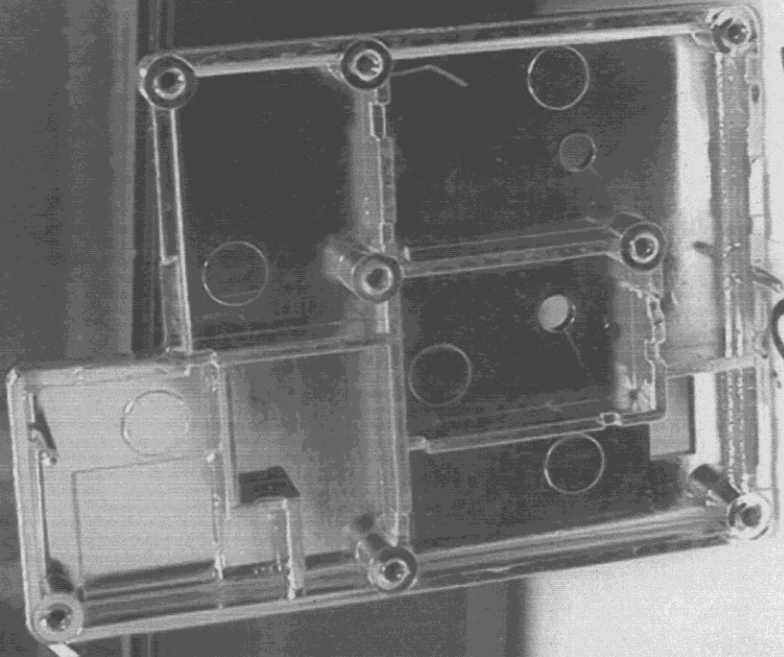
9

6

4

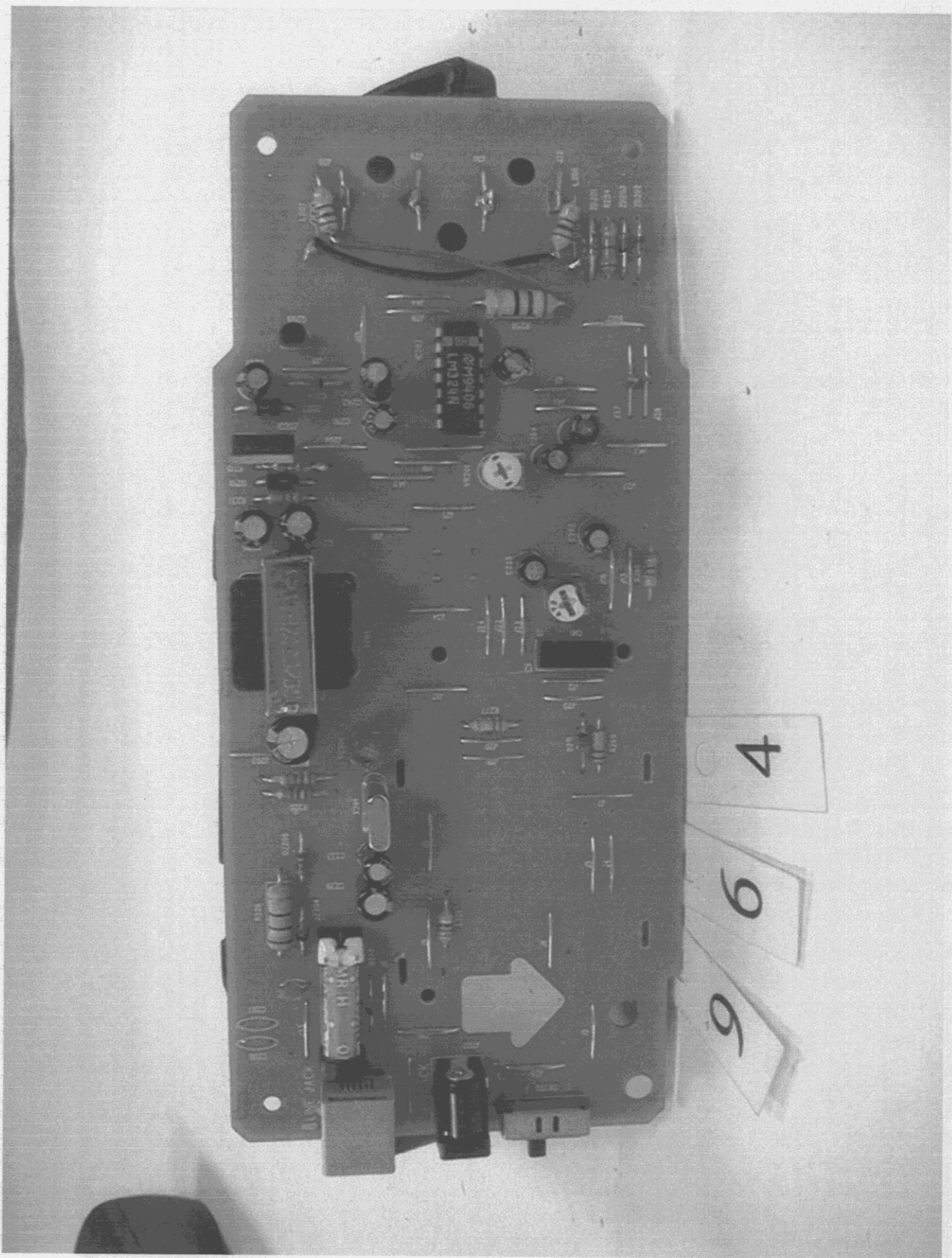


4



6

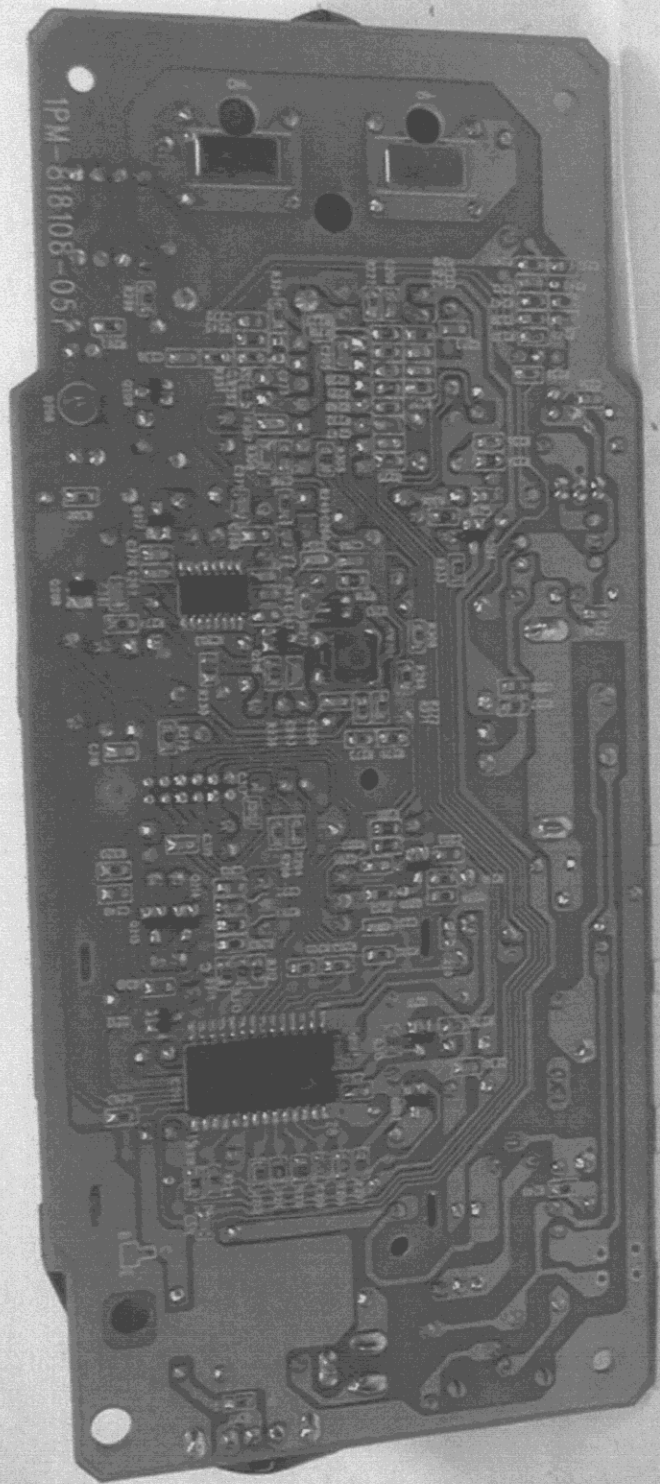
9



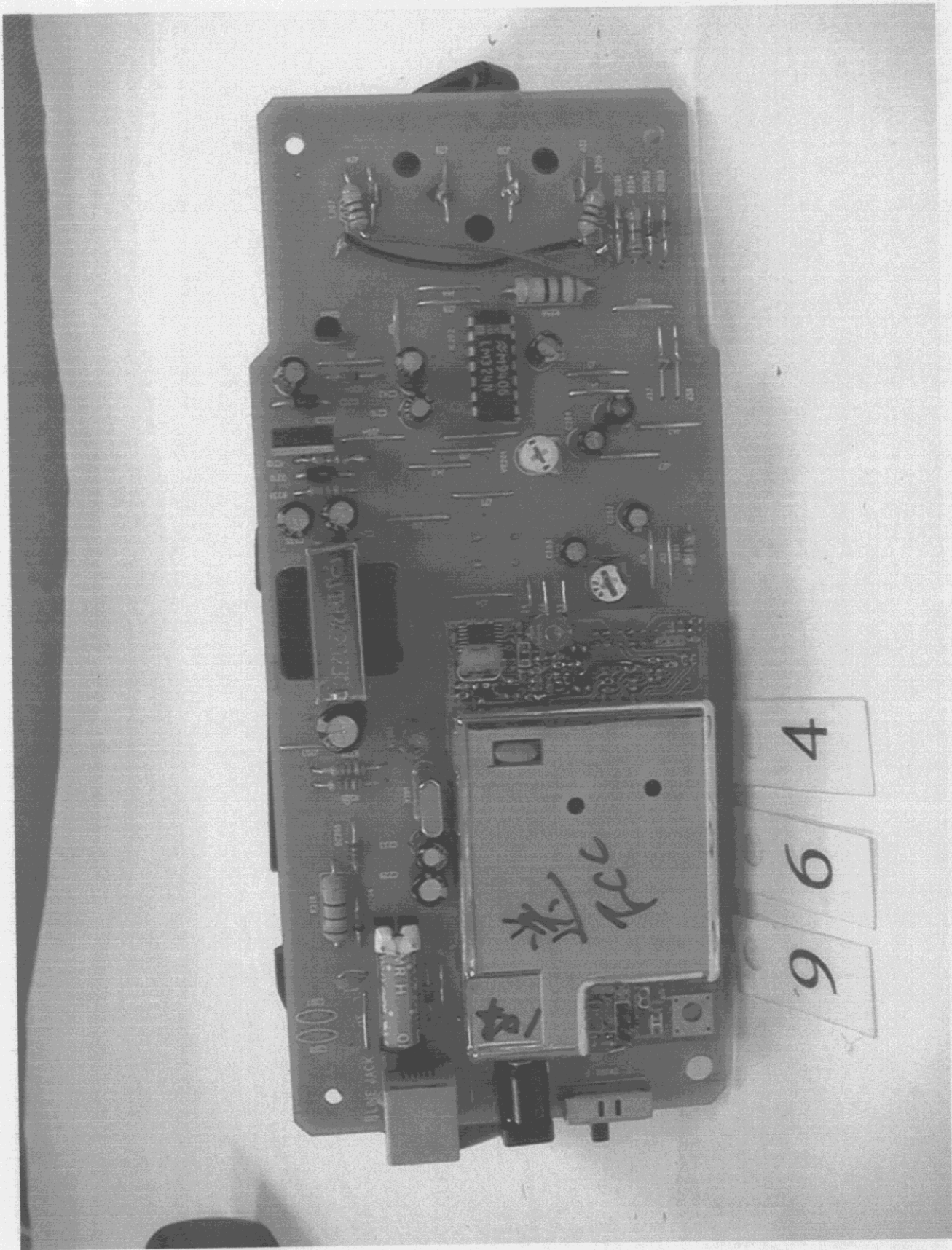
This is a printed circuit board (PCB) populated with various electronic components. The board is oriented vertically. Key components include:

- Central IC:** A quad operational amplifier labeled 'LM324N' is mounted in the center.
- Resistors:** Numerous resistors of various values are distributed across the board, including a large one near the top center.
- Capacitors:** Several electrolytic and ceramic capacitors are present, including a large one near the bottom center.
- Connectors:** There are several connectors, including a multi-pin connector at the top and a D-sub connector at the bottom.
- Other Components:** The board features several integrated circuits, diodes, and other passive components.

9  
 6  
 4



9 6 4



4

6

9

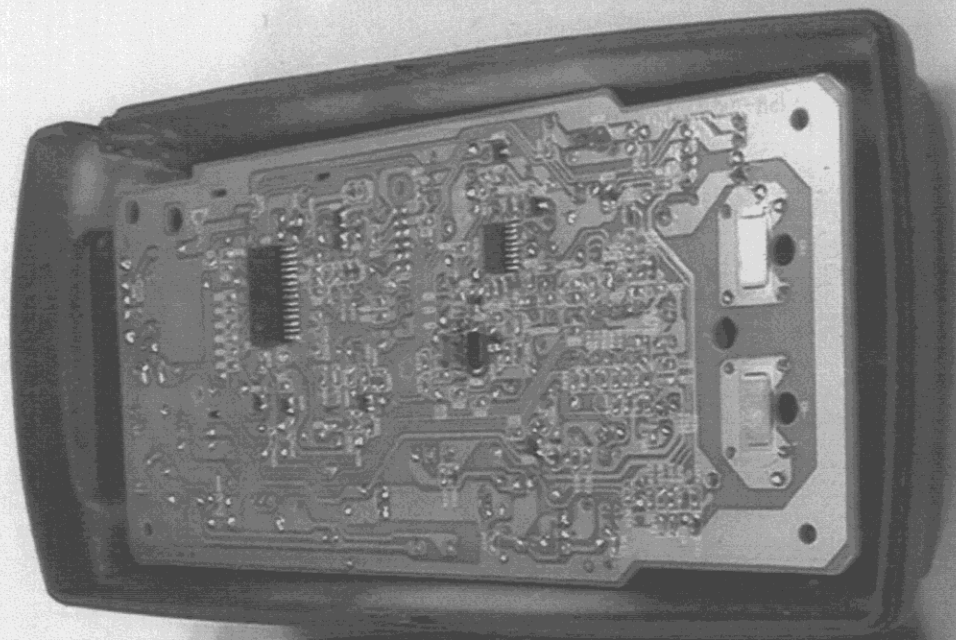
23A  
200

BLUE JACK

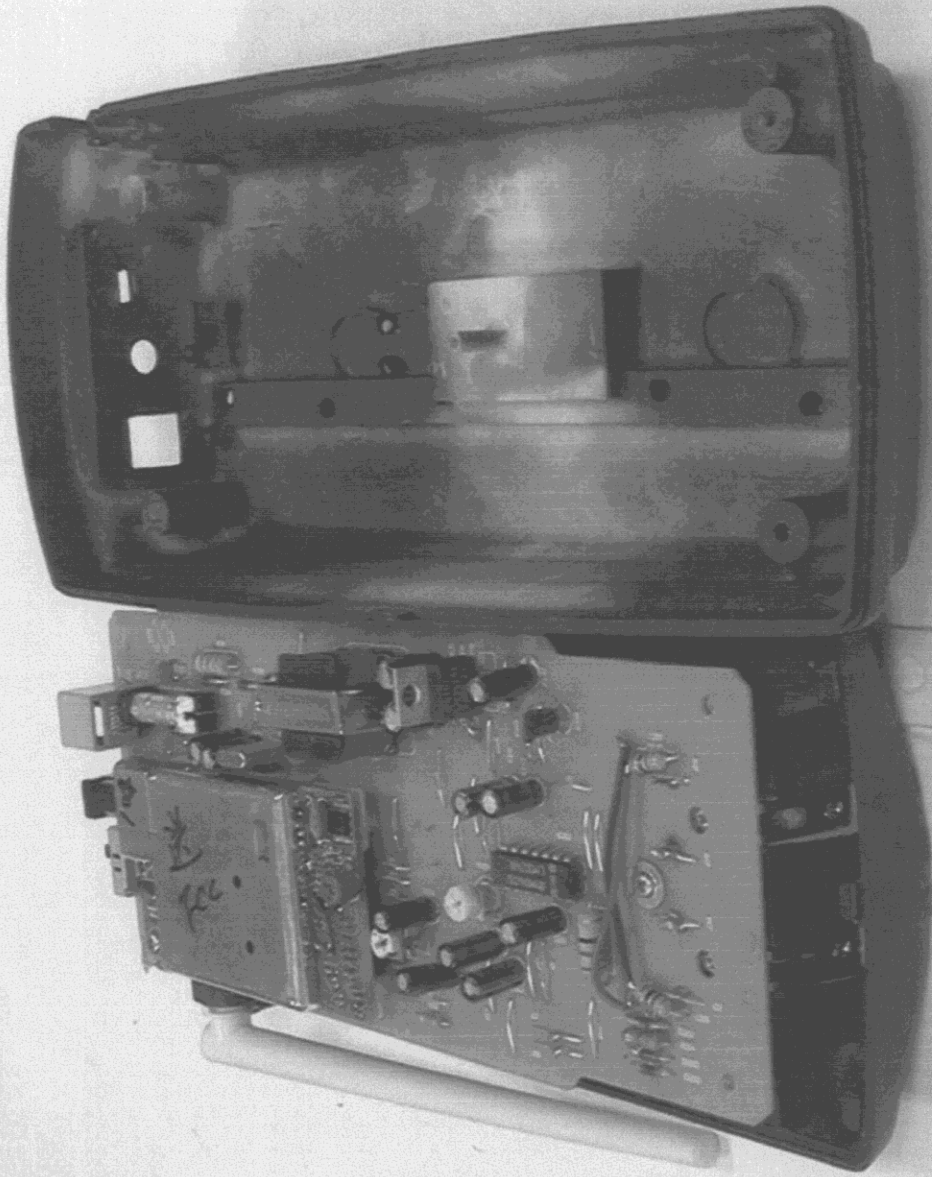
MRH

M2643  
9096M20





964



9 6 4