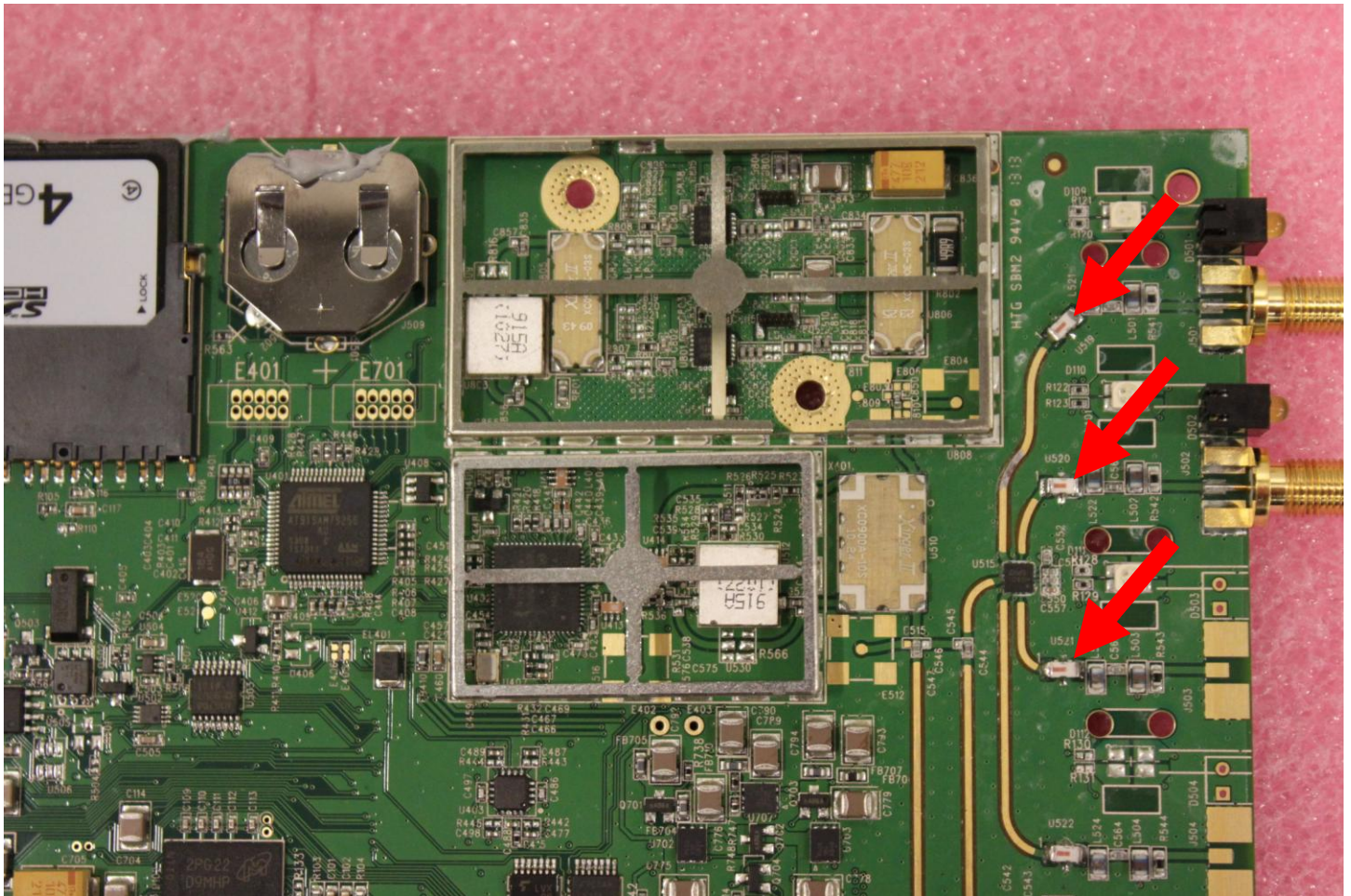


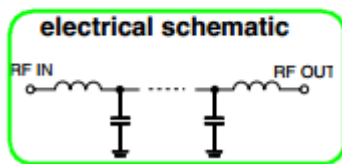
Locations of changed filter, 8 times in the antenna paths.
 Transmitter is to left inside of shielding cans with covers removed.



Filters from Mini Circuits.

VSWR (:1)		NO. OF SECTIONS
Stopband	Passband	
Typ.	Typ.	
20	1.2	7

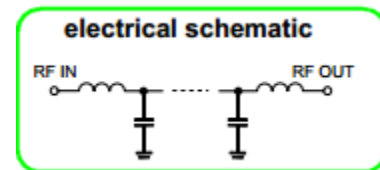
1200D (DC Resistance to ground is 100 Mohms min.)



LFCN-1200 (old):

VSWR (:1)		NO. OF SECTIONS
Stopband	Passband	
Typ.	Typ.	
20	1.3	7

1000D (DC Resistance to ground is 100 Mohms min.)



LFCN-1000 (new):

<http://www.minicircuits.com/pdfs/LFCN-1200.pdf>

<http://www.minicircuits.com/pdfs/LFCN-1000.pdf>