

FCC ID: BVCDMS915

Confirmation Number: EA99258

Correspondence Ref Number: 17507

Occupied Bandwidth, 111.5 kHz Carrier, Modulated

15:17:43 DEC 21, 2000

IF BANDWIDTH
200 Hz

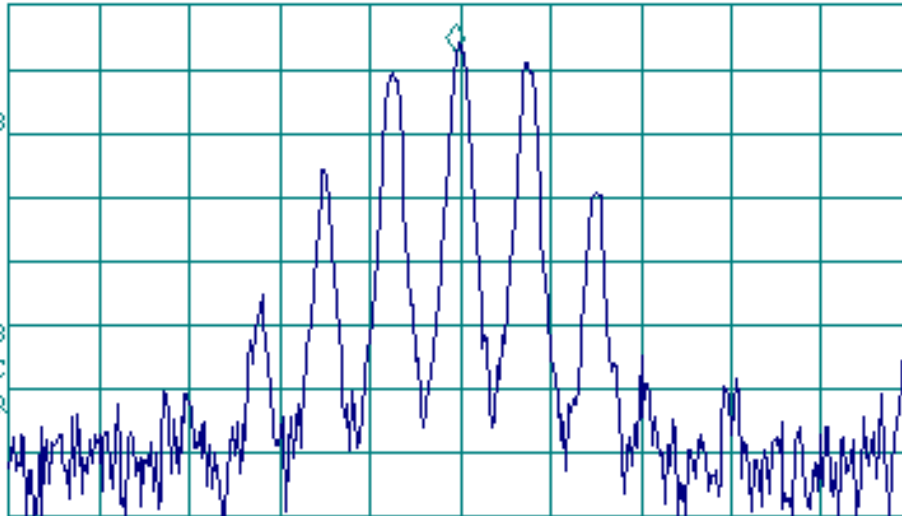
ACTV DET: PEAK
MEAS DET: PEAK QP AVG
MKR 111.45 kHz
31.17 dB μ V

120 kHz
EMI BW

9 kHz
EMI BW

LOG REF 35.0 dB μ V

5
dB/
ATN
10 dB



200 Hz
EMI BW

IF BW
AUTO MAN

WA SB
SC FC
CORR

AVG BW
AUTO MAN

More
1 of 2

CENTER 111.50 kHz
#IF BW 200 Hz

AVG BW 300 Hz

SPAN 10.00 kHz
SWP 4.71 sec