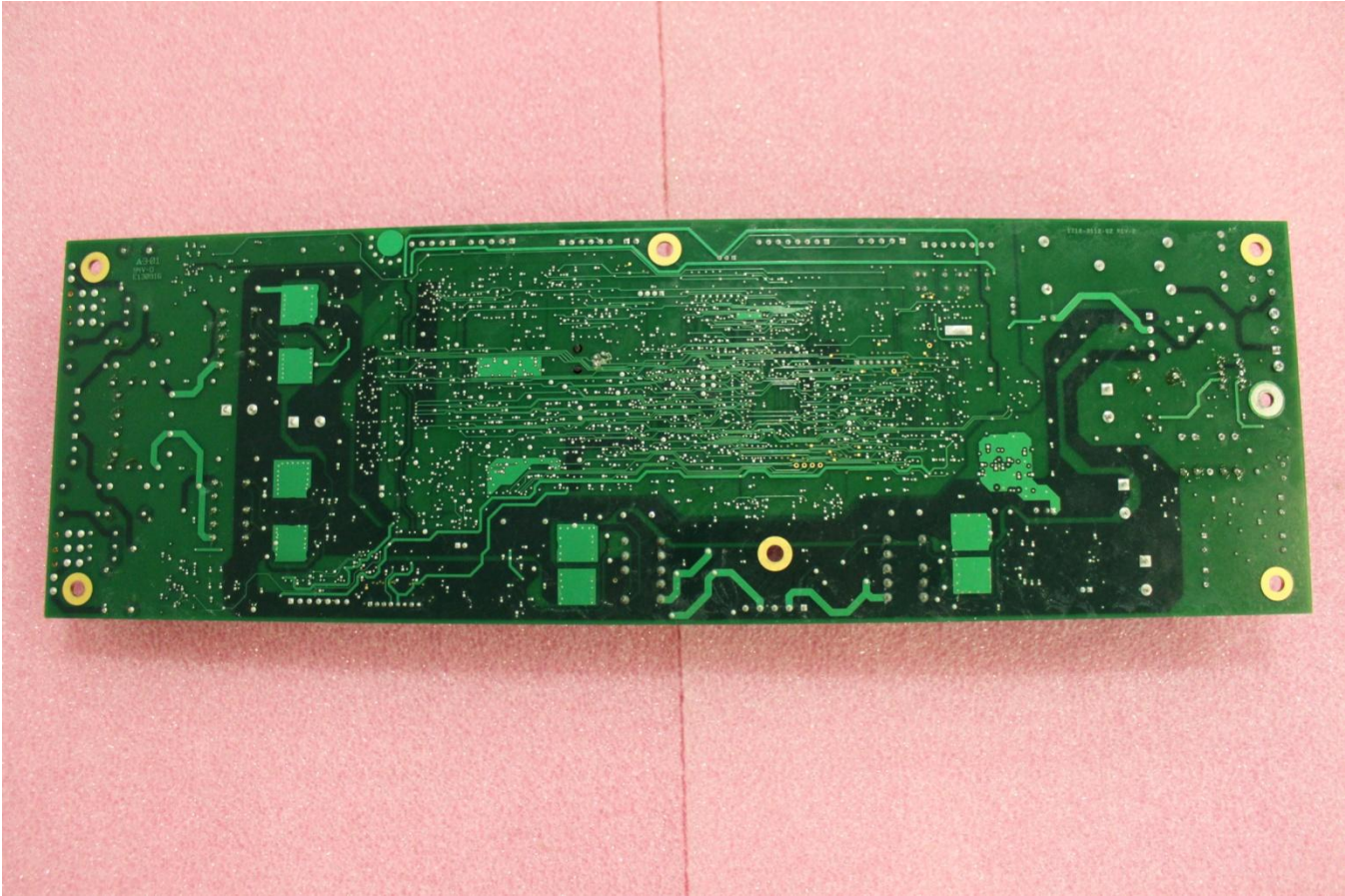


BVCAMSUSUP

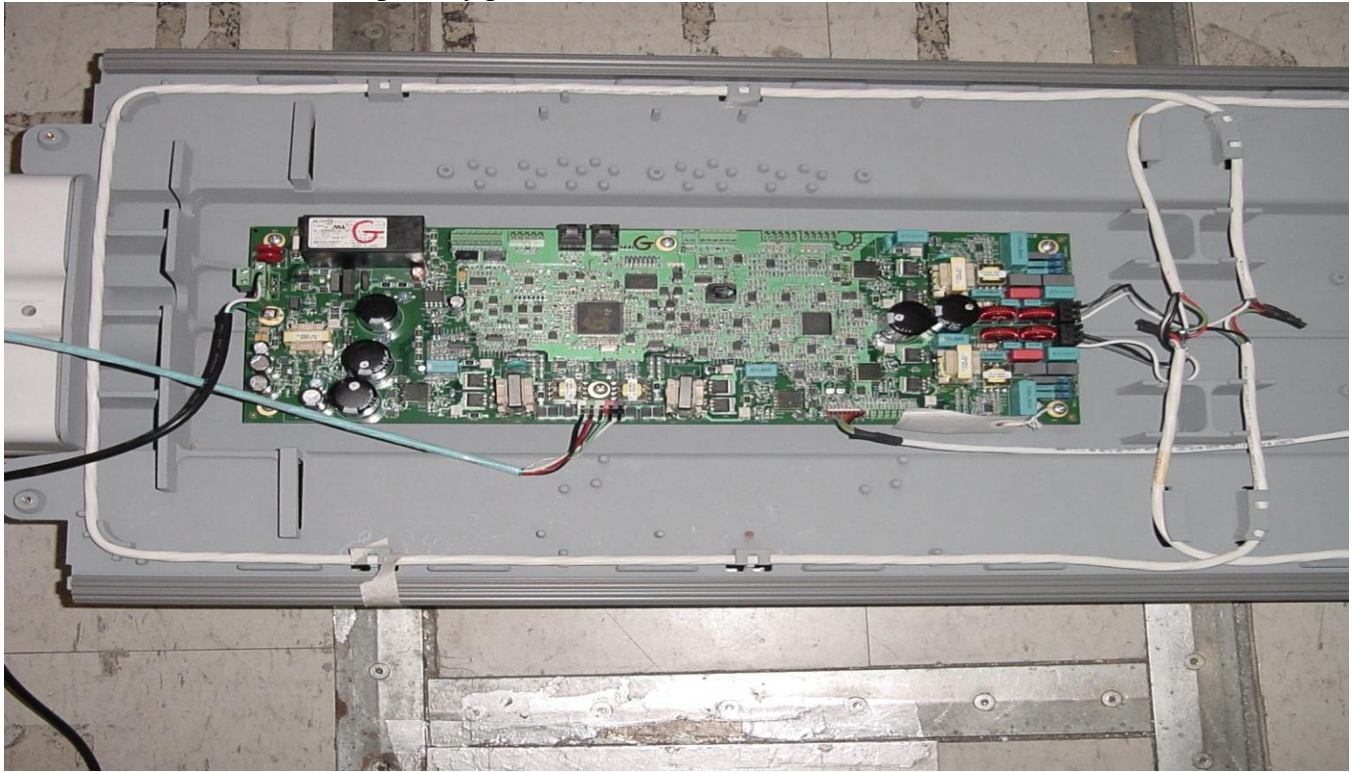
**1 EQUIPMENT UNDER TEST PHOTOS**

Controller board unmounted and turned over.

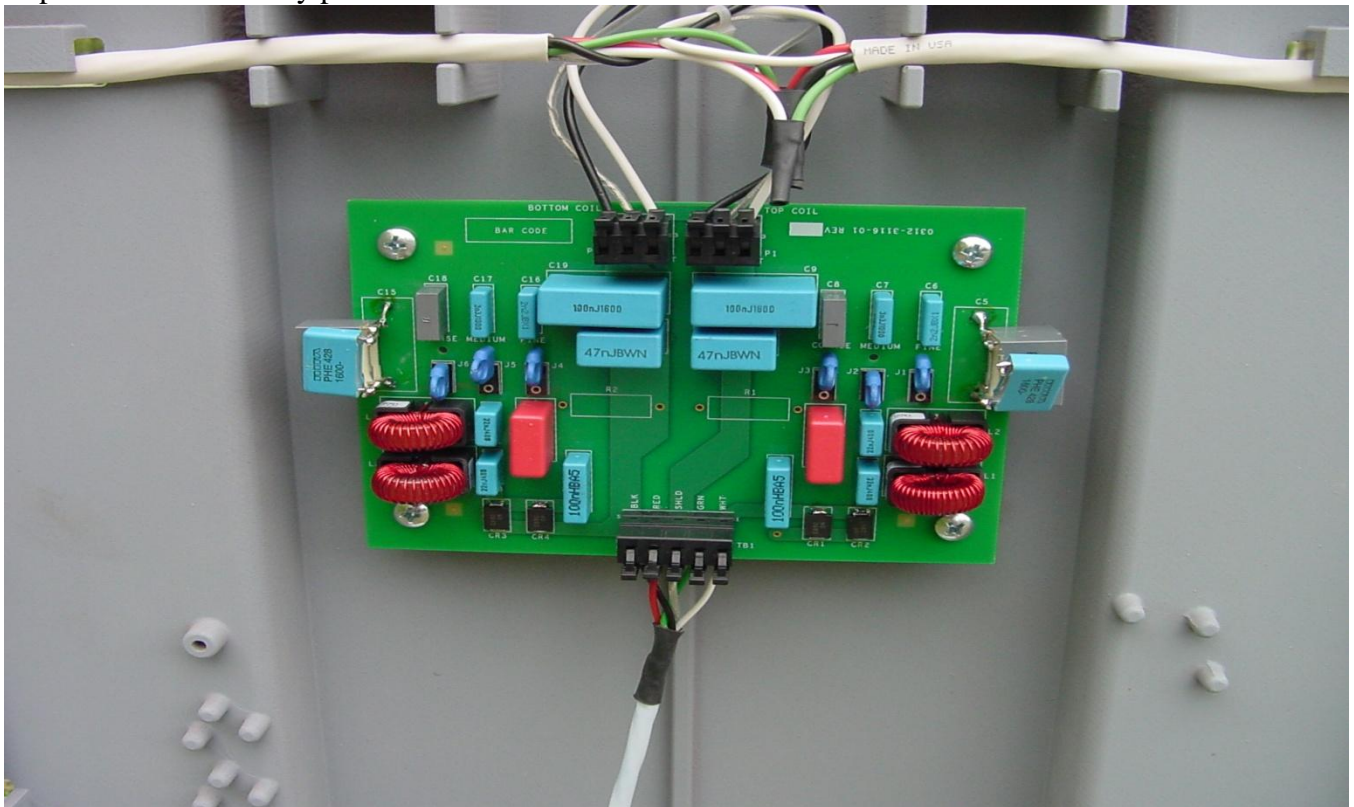


# BVCAMSUSUP

Controller board mounted in primary pedestal.



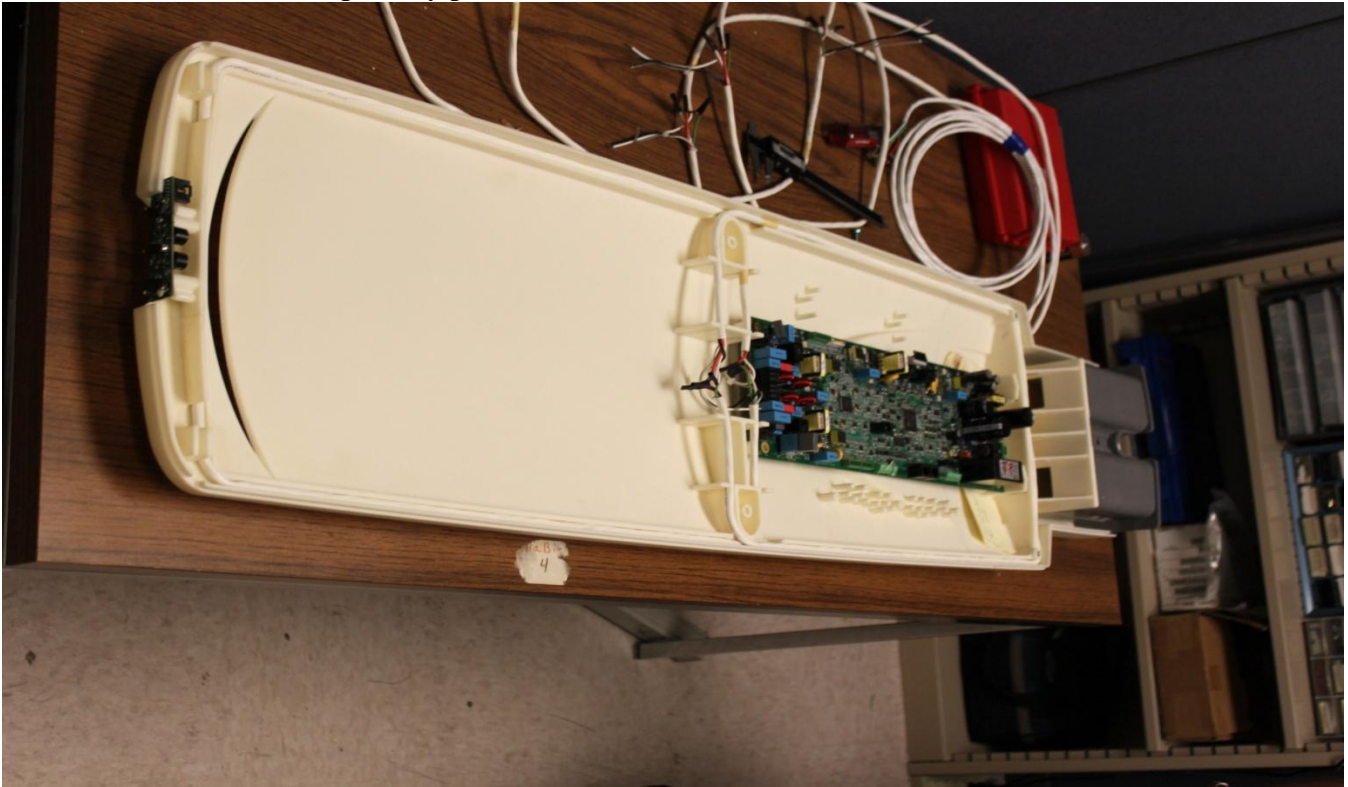
Cap board in Secondary pedestal





BVCAMSUSUP

UltraShield5, AMS-1003, primary pedestal



Cap board in Secondary pedestal

