

Nemco ComLab AS

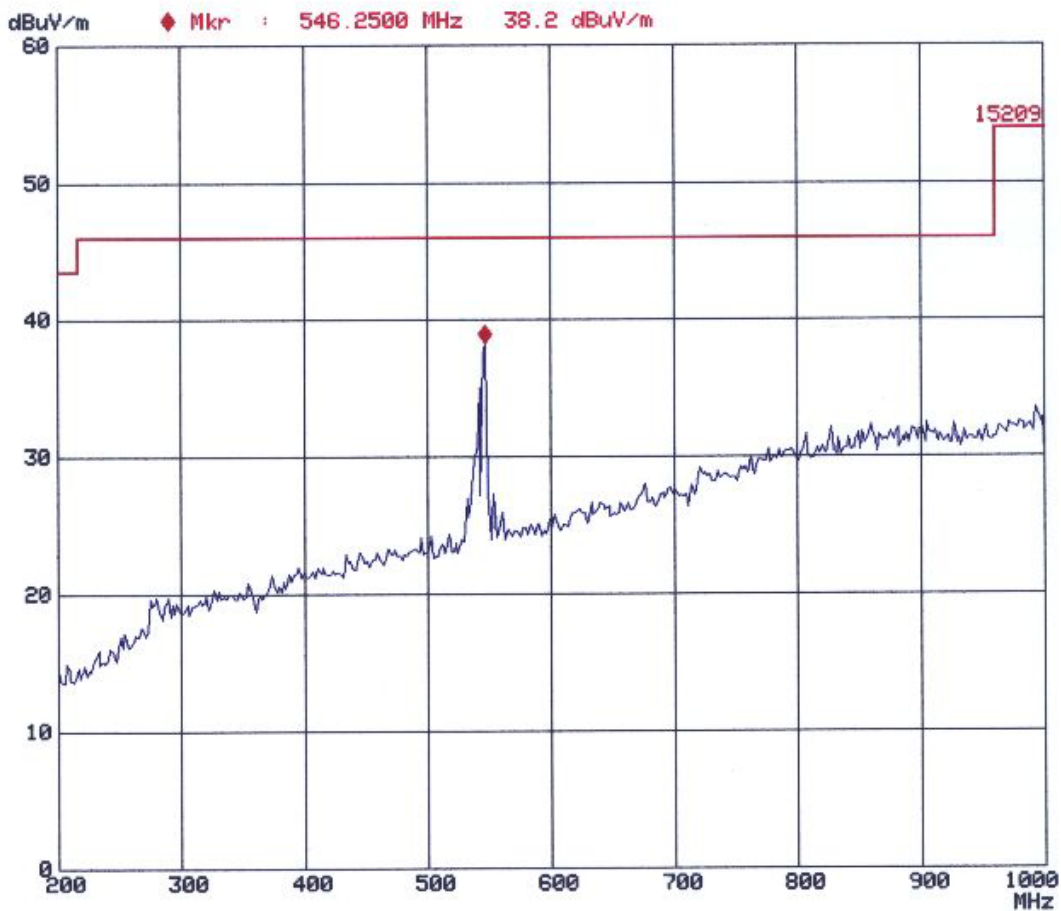
Peak

EUT: Beoline PP
Manuf: B 0
Op Cond: VP 1 m
Operator: Egh
Test Spec: 15209
Date: 15. Sep 03 18:51

Scan Settings (1 Range)

Frequencies			Receiver Settings					
Start	Stop	Step	IF BW	Detector	M-Time	Atten	Preamp	OpRge
200M	1000M	50k	120k	PK	20ms	AUTO	LN ON	60dB

Transducer	No.	Start	Stop	Name
	21	200M	1000M	HL223



Portable part

Nemco ComLab AS

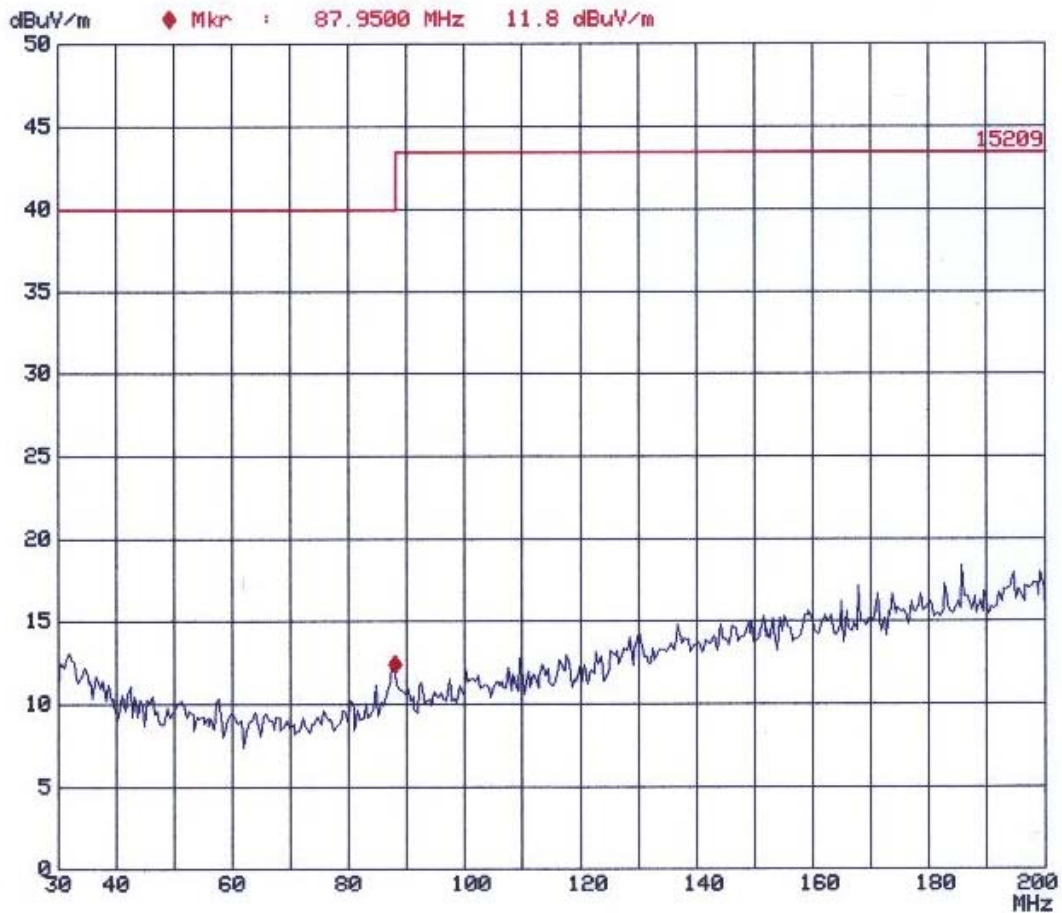
Peak

EUT: Beoline PP
Manuf: B O
Op Cond: HP 4 m
Operator: Egh
Test Spec: 15209
Date: 15. Sep 03 19:32

Scan Settings (1 Range)

Frequencies			Receiver Settings					
Start	Stop	Step	IF BW	Detector	M-Time	Atten	Preamp	OpRge
30M	200M	50k	120k	PK	20ms	AUTO	LN ON	60dB

Transducer	No.	Start	Stop	Name
	20	30M	200M	HK116



Portable Part

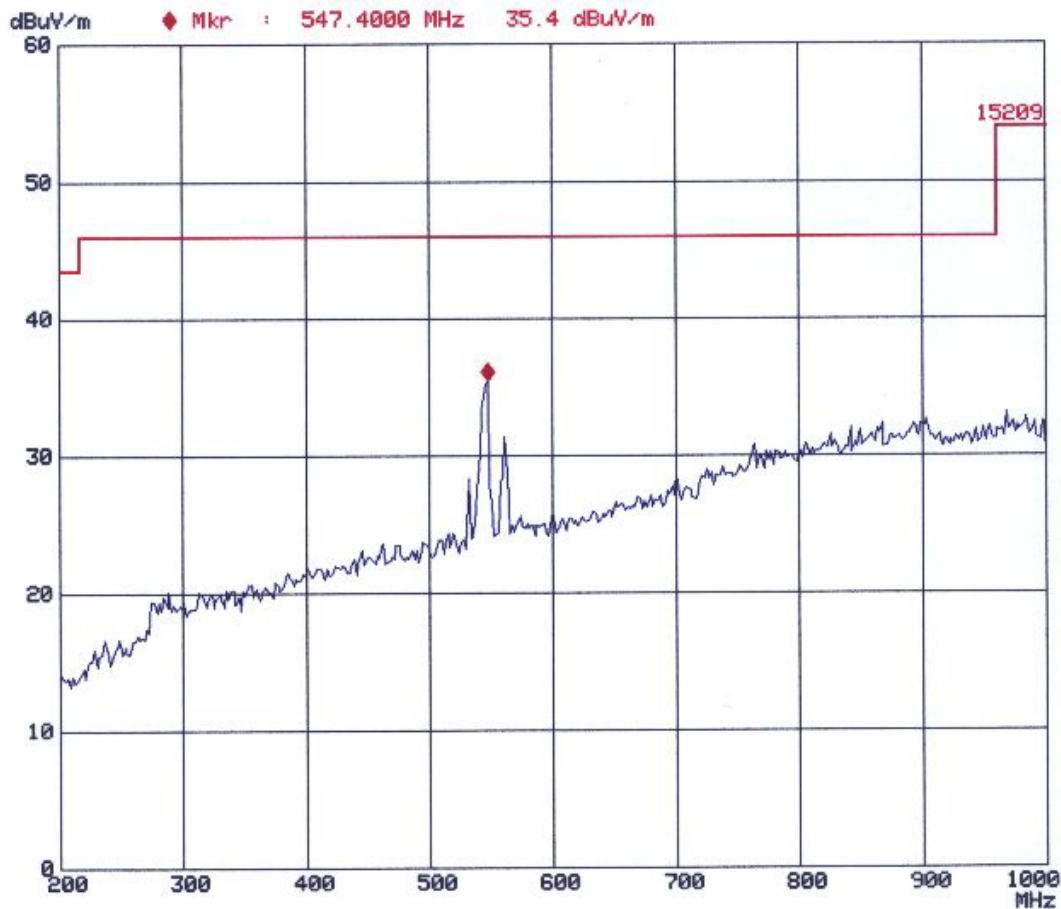
Nemco Comlab AS
Peak

EUT: Beoline PP
Manuf: B 0
Op Cond: HP 4 m
Operator: Egh
Test Spec: 15209
Date: 15. Sep 03 19:01

Scan Settings (1 Range)

Frequencies			Receiver Settings					
Start	Stop	Step	IF BW	Detector	M-Time	Atten	Preamp	OpRge
200M	1000M	50k	120k	PK	20ms	AUTO	LN ON	60dB

Transducer No.	Start	Stop	Name
21	200M	1000M	HL223



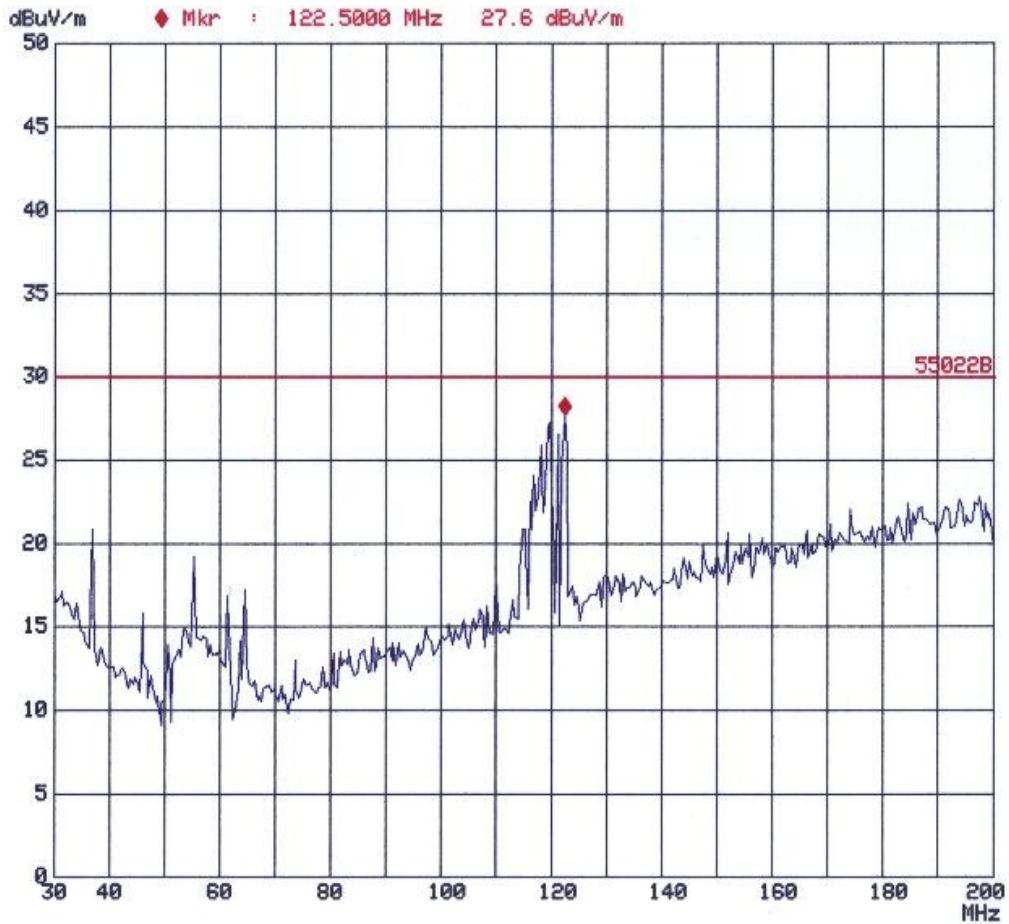
Portable part

Nemco Comlab AS
Peak
EUT: BeoLine
Manuf: Bang & Olufsen
Op Cond: One line operative
Operator: Egh
Test Spec: CISPR 22 Class B
Comment: 1 m VP
Date: 23. Jul 03 12:13

Scan Settings (1 Range)

Frequencies			Receiver Settings					
Start	Stop	Step	IF BW	Detector	M-Time	Atten	Preamp	OpRge
30M	200M	50k	120k	PK	20ms	AUTO	LN ON	60dB

Transducer No.	Start	Stop	Name
11	30M	200M	3104C



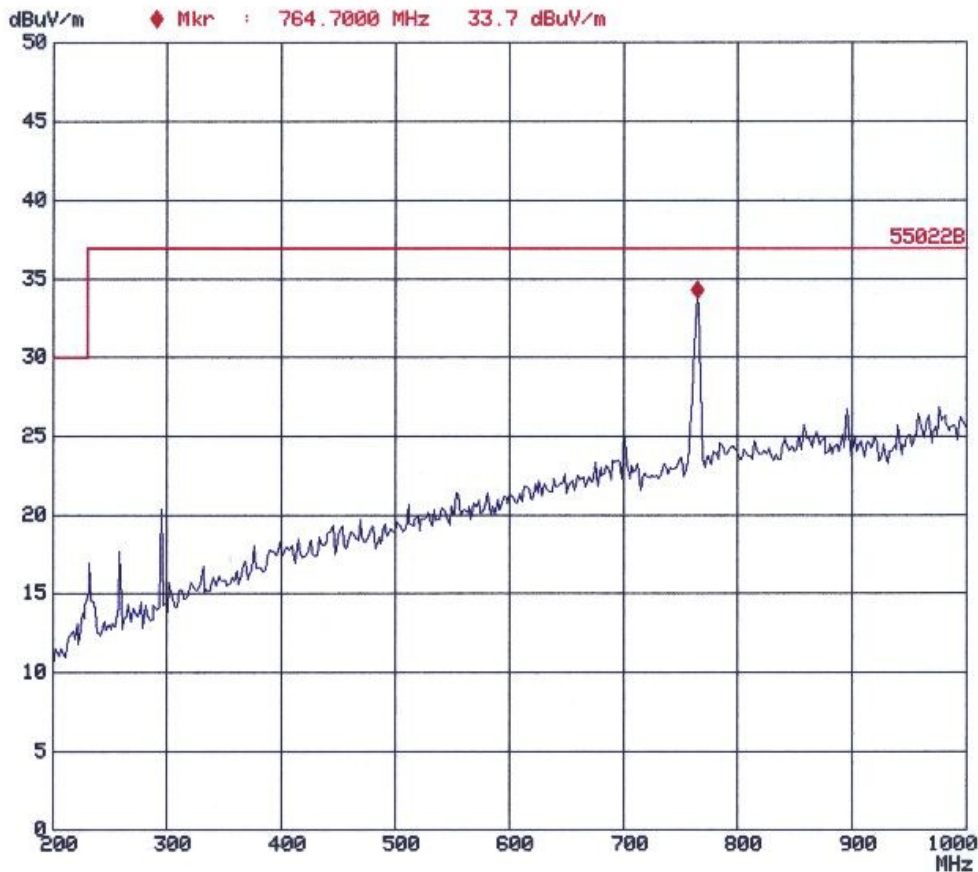
Fixed part

Nemco ComLab AS
Peak
EUT: BeoLine
Manuf: Bang & Olufsen
Op Cond: One line operative
Operator: Egh
Test Spec: CISPR 22 Class B
Comment: 4 m HP
Date: 23. Jul 03 13:13

Scan Settings (1 Range)

Frequencies			Receiver Settings					
Start	Stop	Step	IF BW	Detector	M-Time	Atten	Preamp	OpRge
200M	1000M	50k	120k	PK	20ms	AUTO	LN ON	60dB

Transducer	No.	Start	Stop	Name
	22	200M	1000M	HL223HP



Fixed part

Radiated emission 10 kHz – 30 MHz

See attached graph.

Measuring distance 10 metres. Both Portable part and Fixed part are measured. When receiver is in scanning mode, Peak detector is used.

Nemco Comlab AS
PEAK

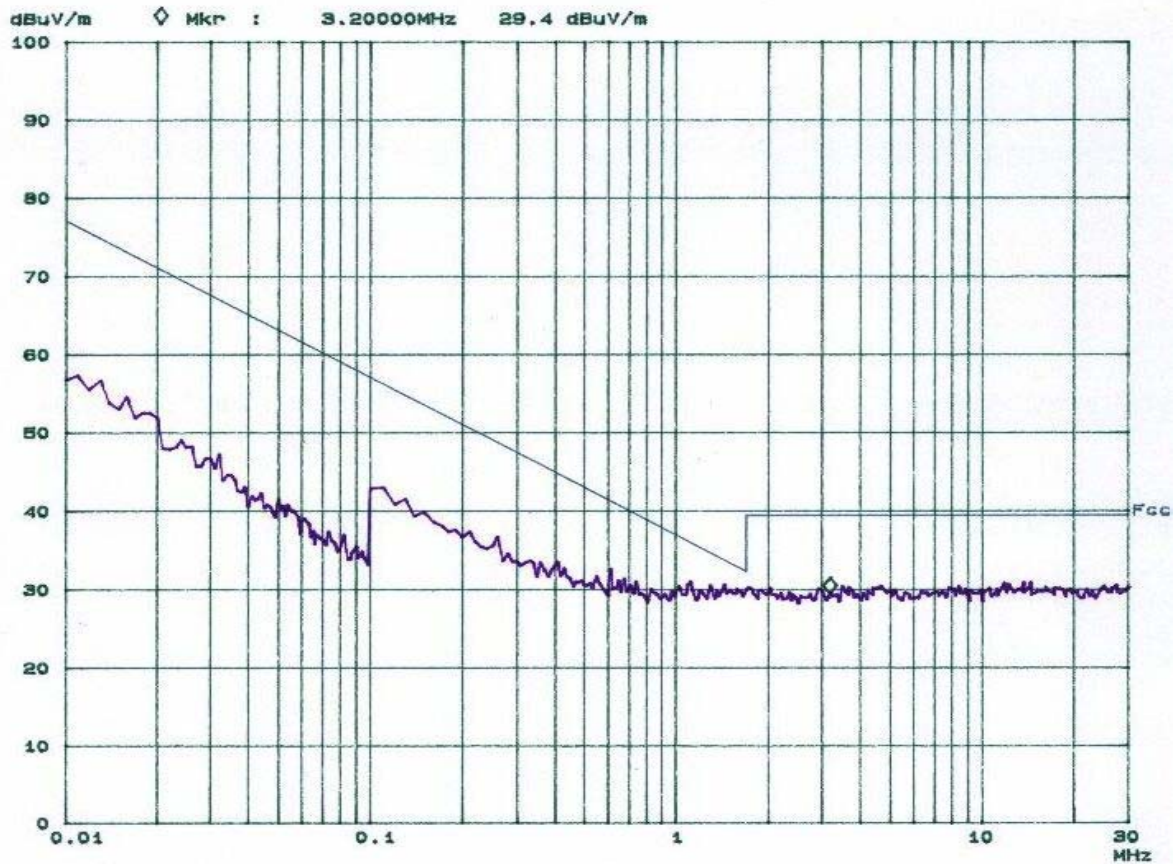
02. Jul 03 18:11

Operator: FS
Comment: BEOCOM
FCC 15
89+HS FRONT
COMLAB 6
LINE 1

Scan Settings (4 Ranges)

Frequencies			Receiver Settings					
Start	Stop	Step	IF BW	Detector	M-Time	Atten	Preamp	OpRge
10k	100k	1k	1k	PK	100ms	0dB	BLN ON	60dB
100k	1M	10k	9k	PK	100ms	0dB	BLN ON	60dB
1M	10M	10k	9k	PK	100ms	0dB	BLN ON	60dB
10M	30M	10k	9k	PK	100ms	0dB	BLN ON	60dB

Transducer No. Start Stop Name
13 10k 30M HFH222



Portable and fixed part.

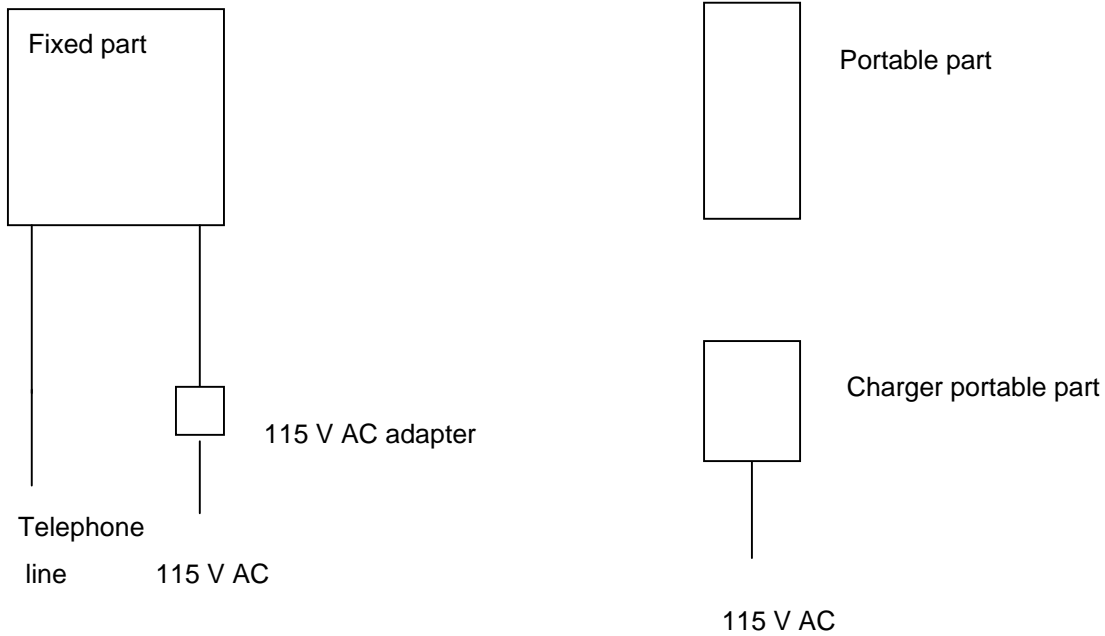
5 LIST OF TEST EQUIPMENT

To facilitate inclusion on each page of the test equipment used for related tests, each item of test equipment and ancillaries are identified (numbered) by the Test Laboratory.

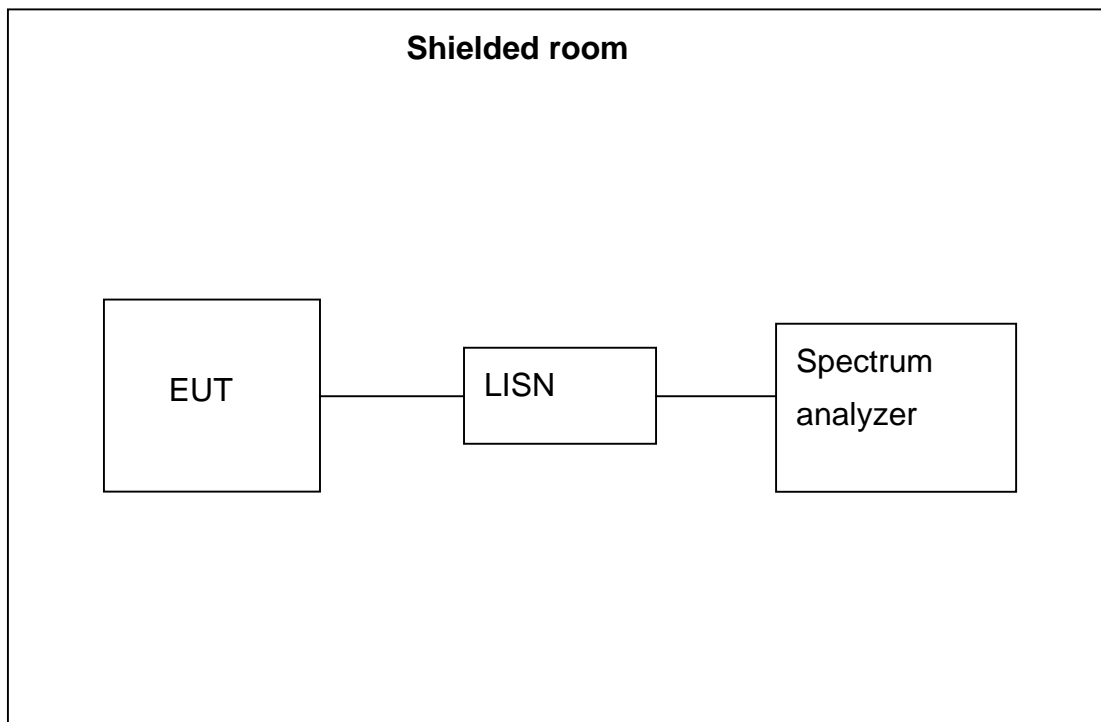
No.	Instrument/ancillary	Type of instrument/ancillary	Manufacturer	Ref. no.
1	FSEK	Spectrum Analyzer	Rohde & Schwarz	LR 1337
2	ESAI	Spectrum Analyzer	Rohde & Schwarz	LR 1090
3	3115	Antenna horn	EMCO	LR 1330
4	643	Antenna horn	Narda	LR 093
5	642	Antenna horn	Narda	LR 220
6	PM7320X	Antenna horn	Siverts lab	LR 103
7	DBF-520-20	Antenna horn	Systron Donner	LR 101
8	638	Antenna horn	Narda	LR 098
9	5VF1000/2000	BP filter	Trilithic	LR 1174
10	5VF2000/4000	BP filter	Texscan	LR 42
11	ESH3-Z3	LISN	Rohde & Schwarz	LR 1076
12	8449B	Amplifier	Hewlett Packard	LR 1322
13	959C	Printer	Hewlett Packard	LR 1414
14	HFH2-Z2	Antenna loop	Rohde and Schwarz	LR 285
15	10855A	Amplifier	Hewlett Packard	LR 1445
16	HL223	Antenna log.per	Rohde & Schwarz	LR 1261
17	3104C	Antenna biconic	EMCO	LR 1262
18	R3271	Spectrum Analyzer	Advantest	LR 1123
19				

6 BLOCK DIAGRAM

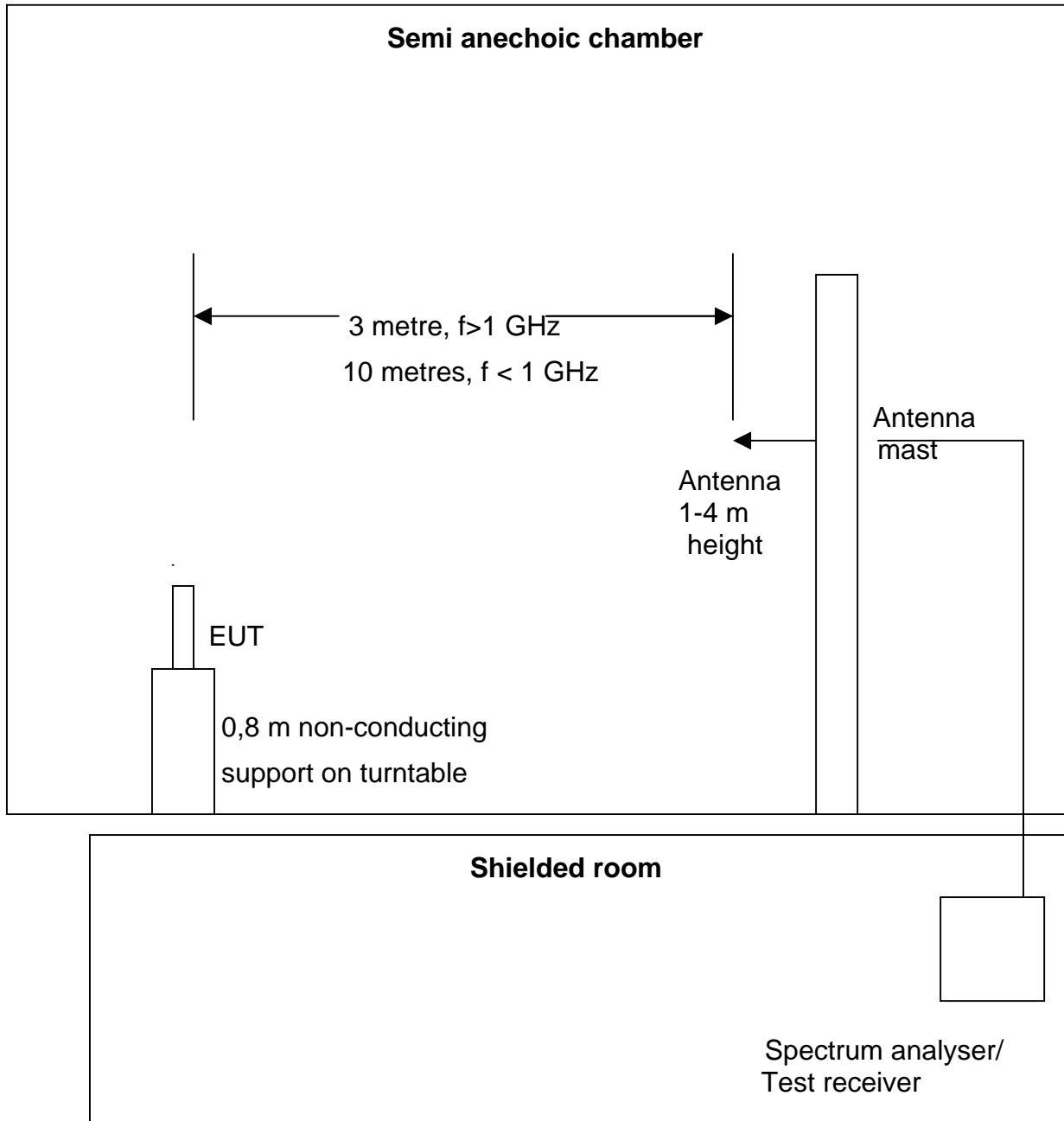
6.1 System set up



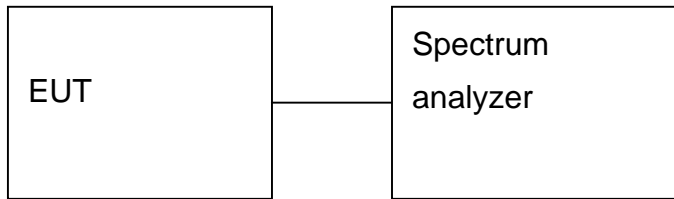
6.2 Powerline Conducted Emission



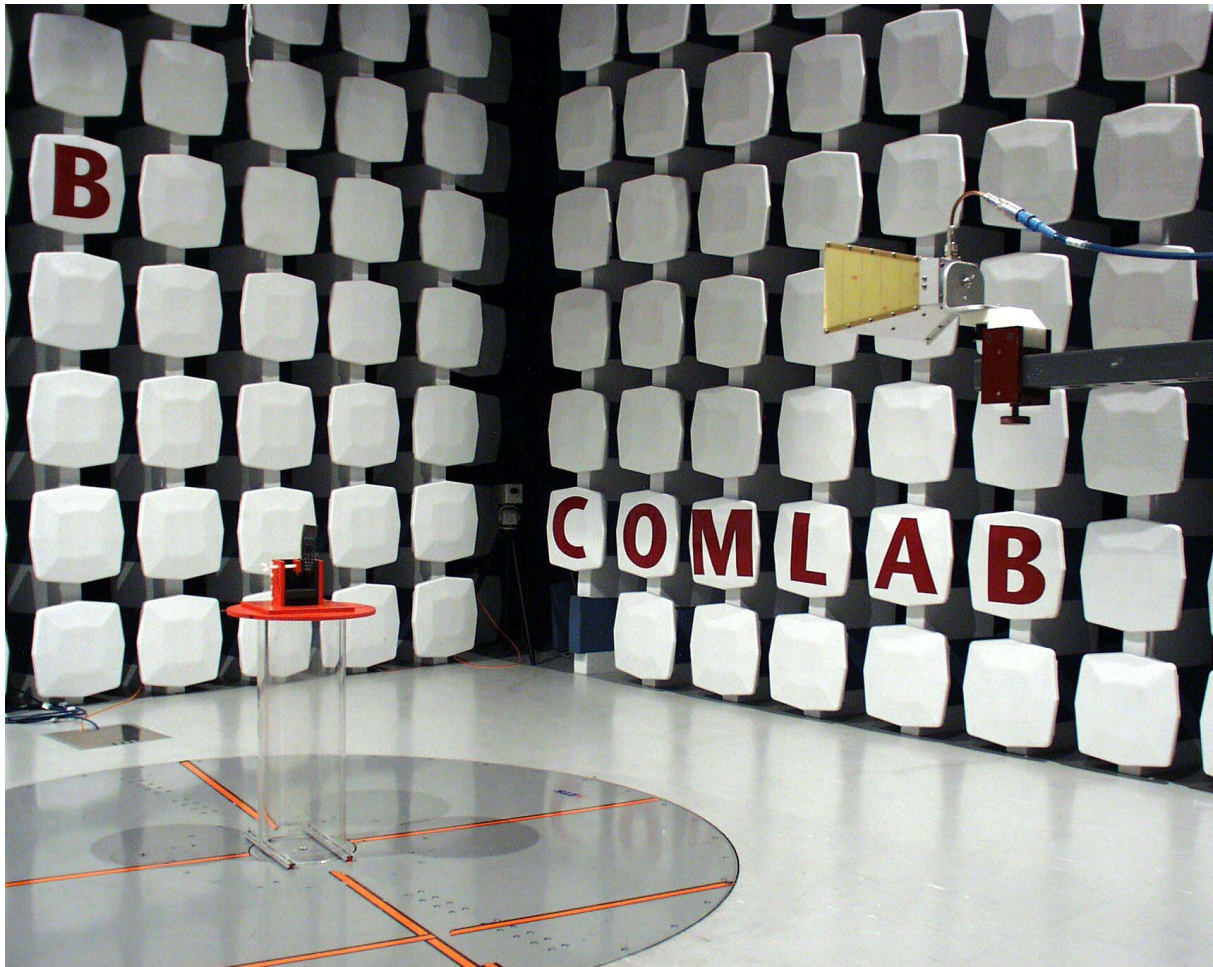
6.3 Test Site Radiated Emission



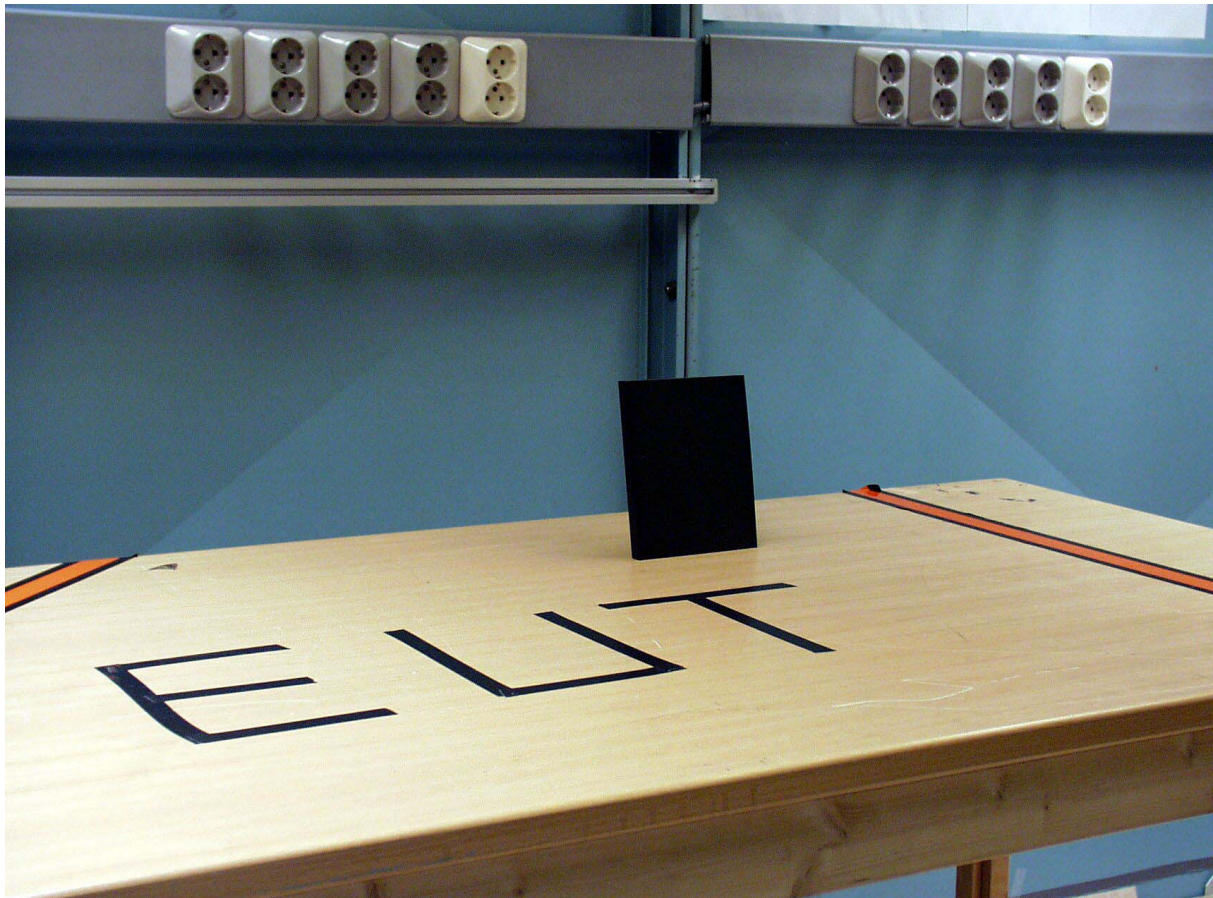
6.4 Peak Power Output



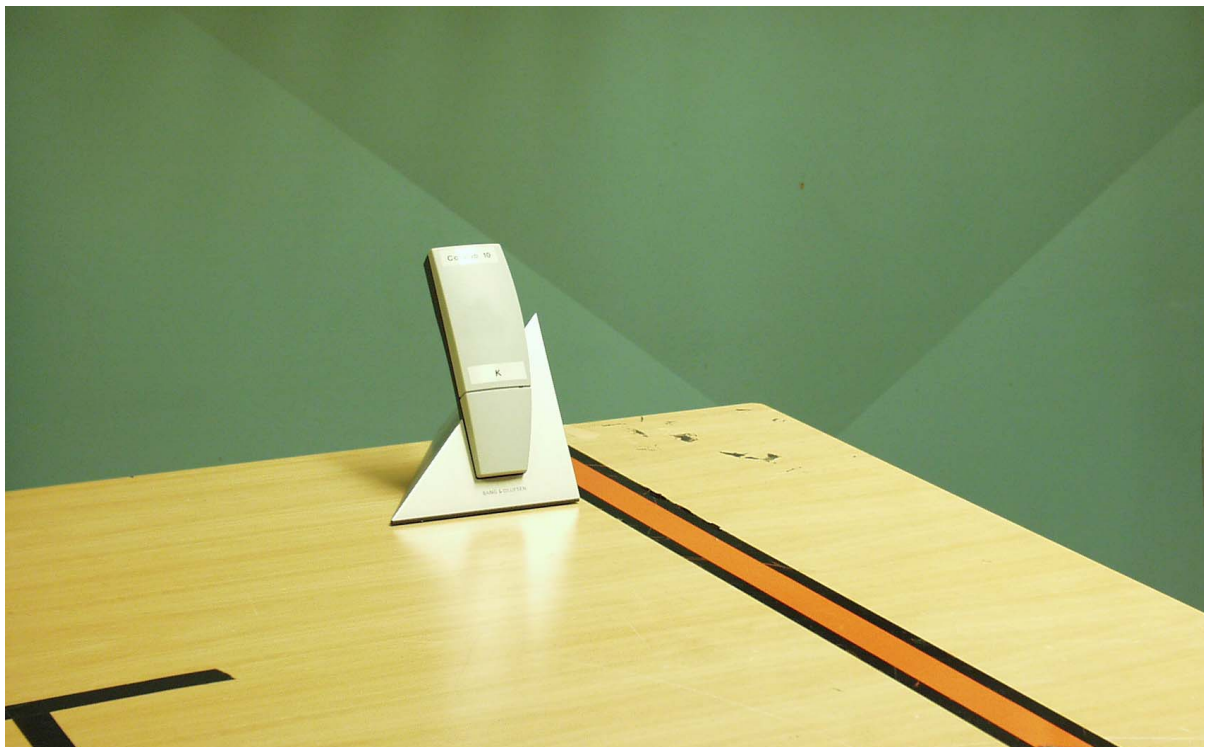
7 PICTURES OF TEST SET-UP AND THE TESTED EQUIPMENT



Radiated emission



Conducted emissions, Base



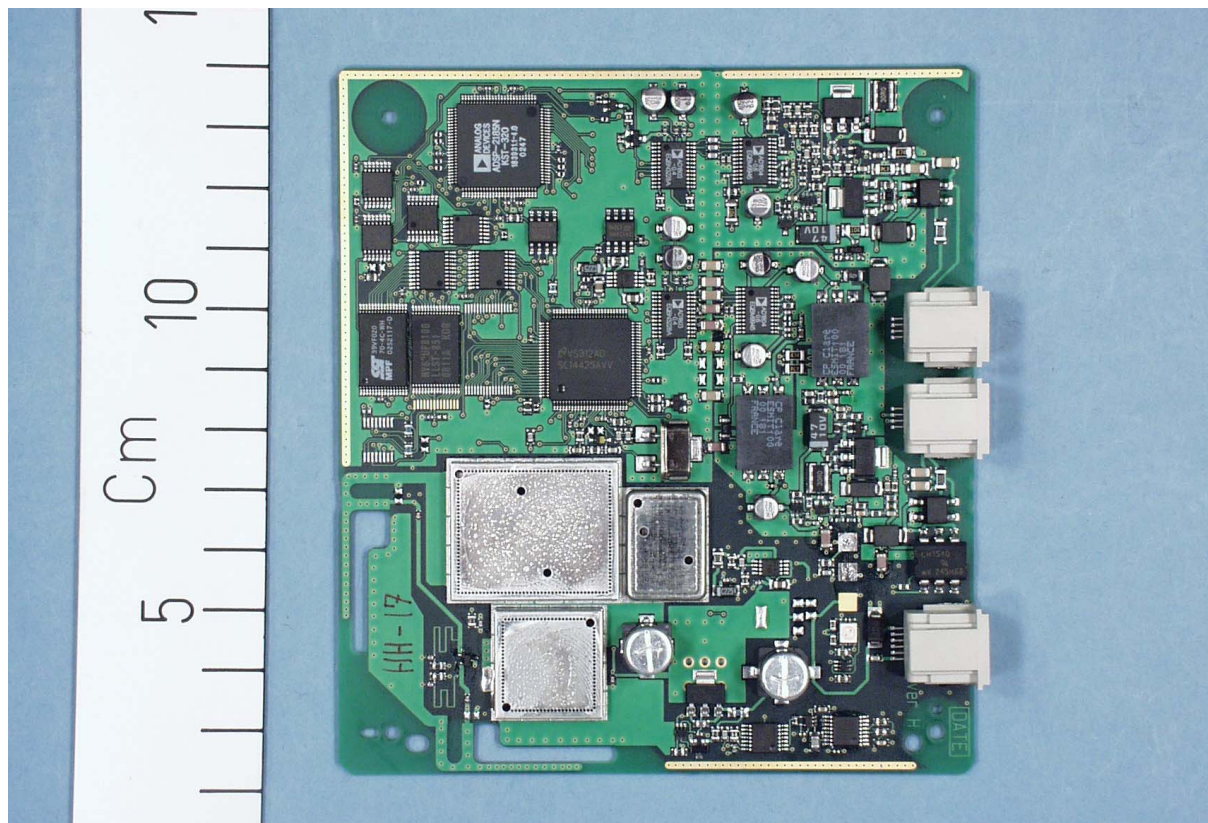
Conducted emissions, Portable



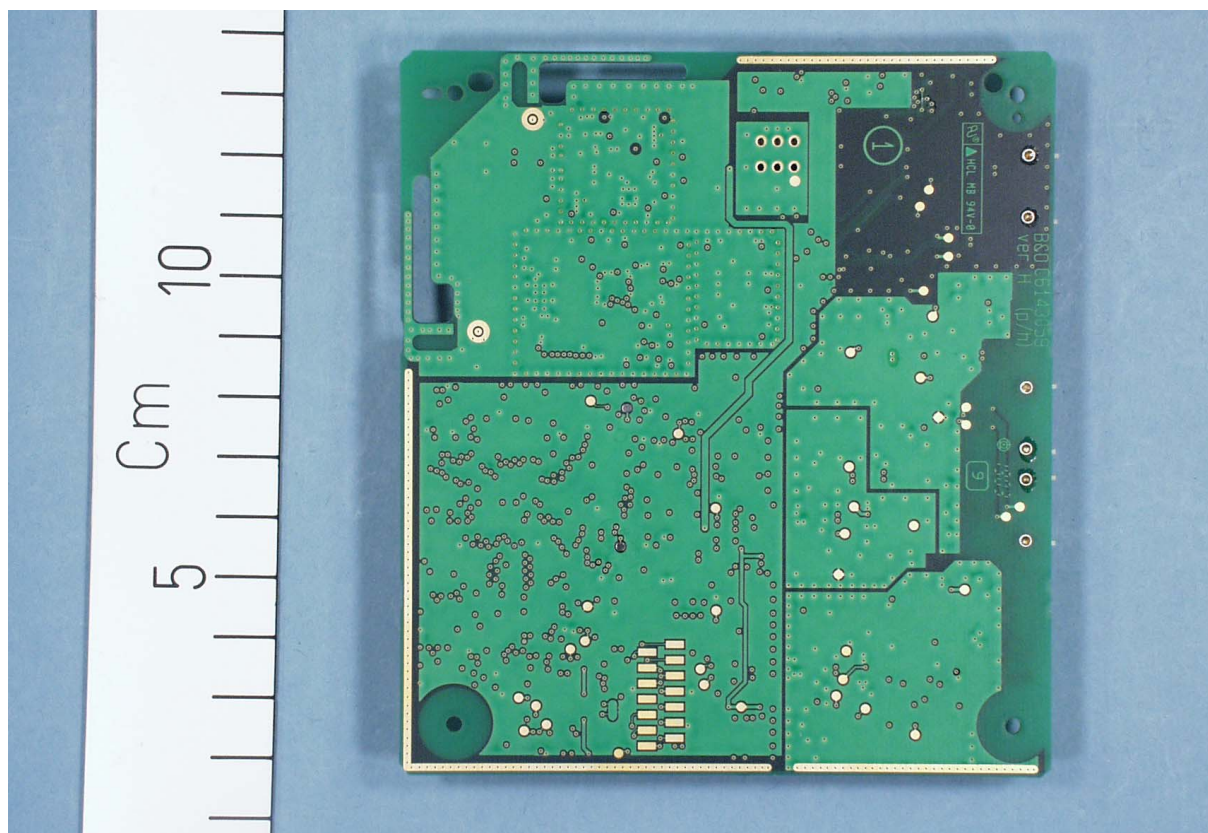
Conducted Emissions test



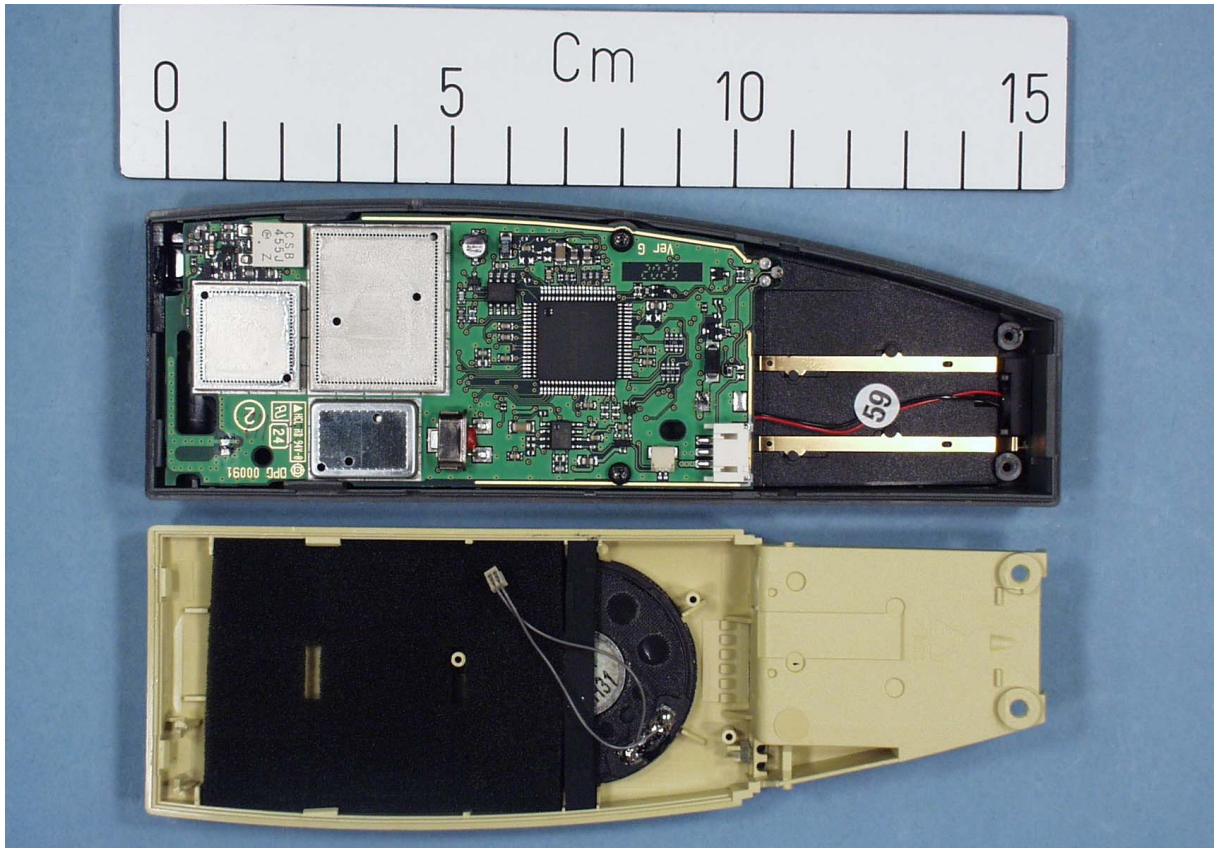
Overview of tested equipment



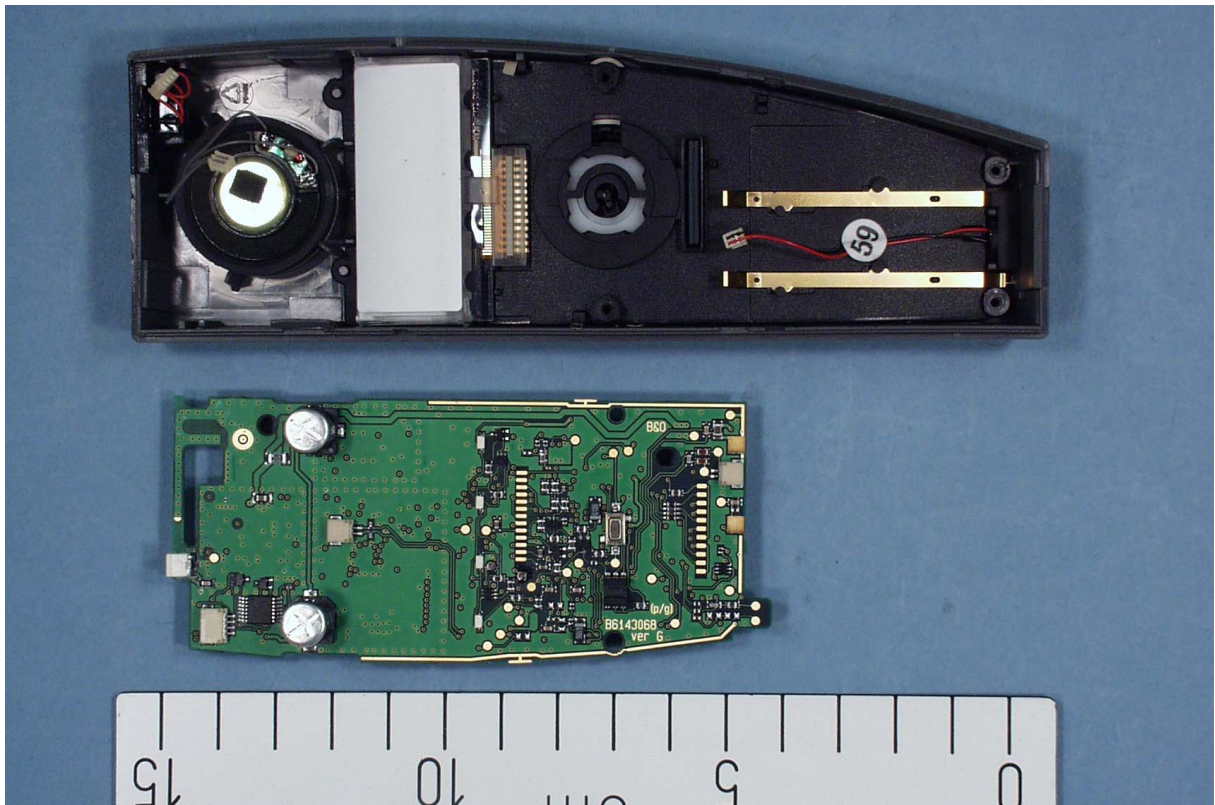
Base, Inside view 1



Base, Inside view 2



Handset, Inside view 1



Handset, Inside view 2

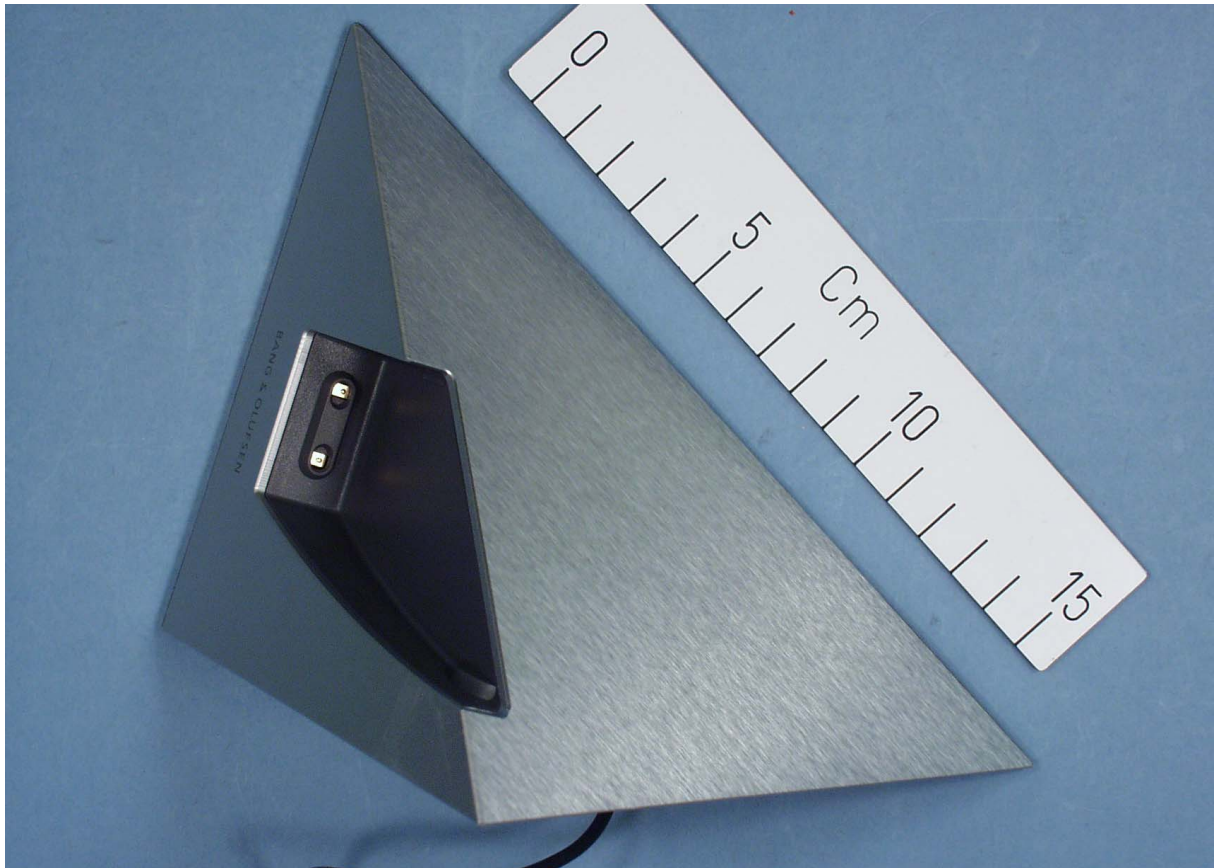
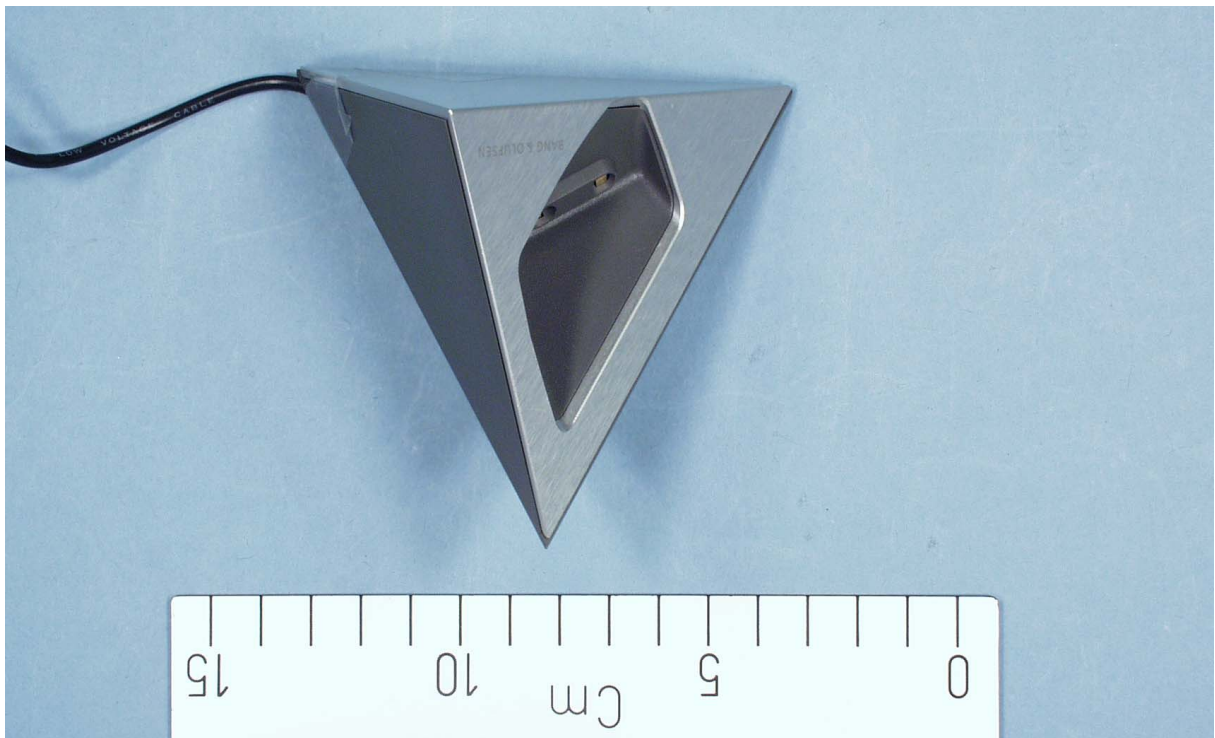


Table charger



Wall charger