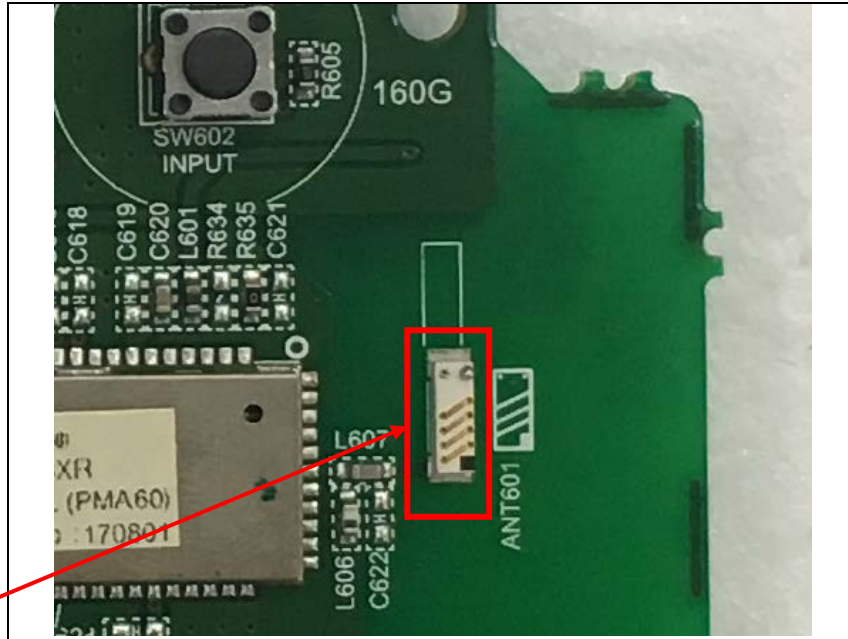


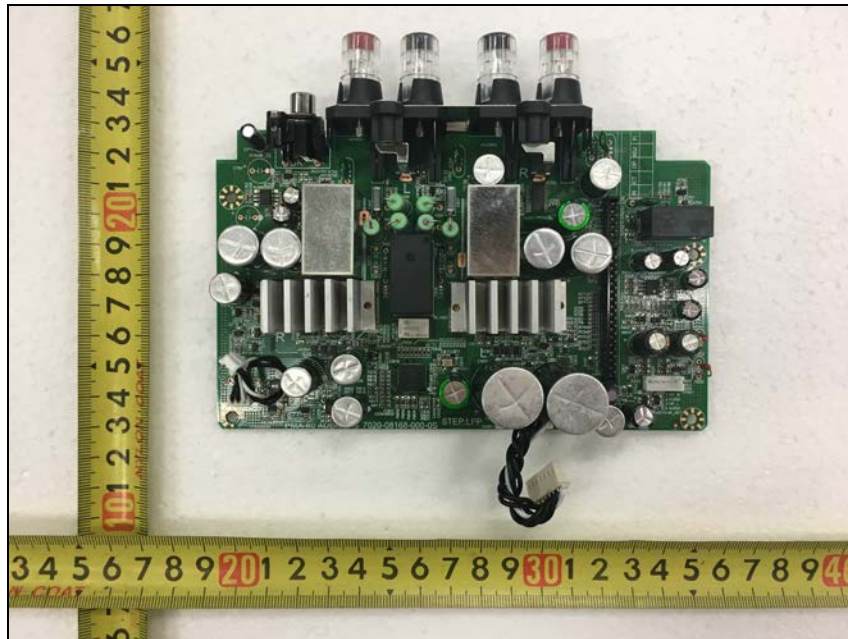
Internal photos of EUT

Antenna view of EUT

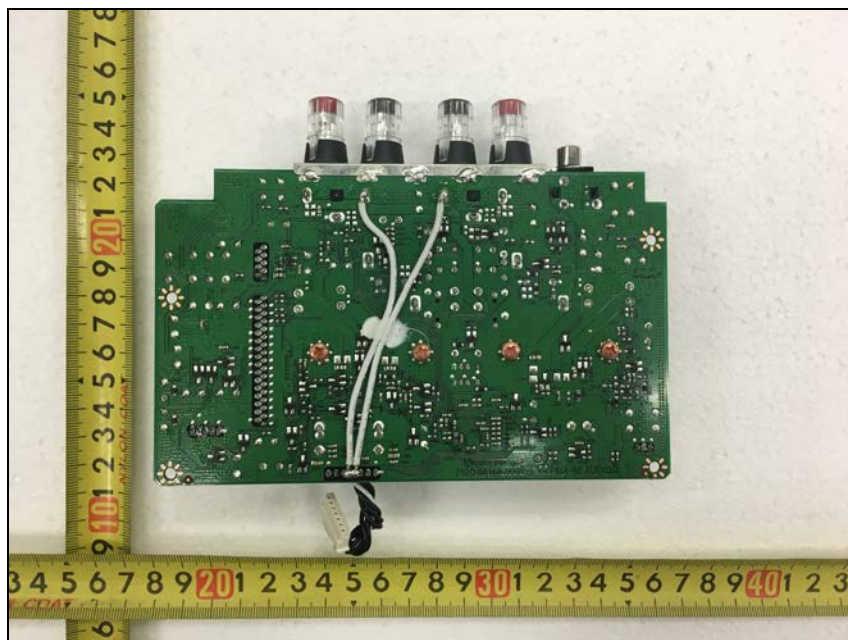


Chip Antenna

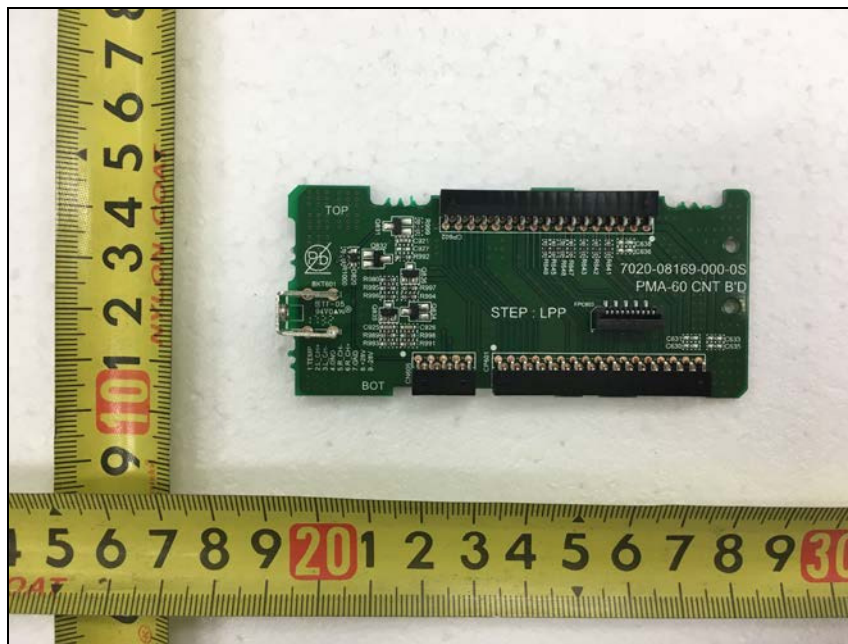
Top view of AUDIO B'D



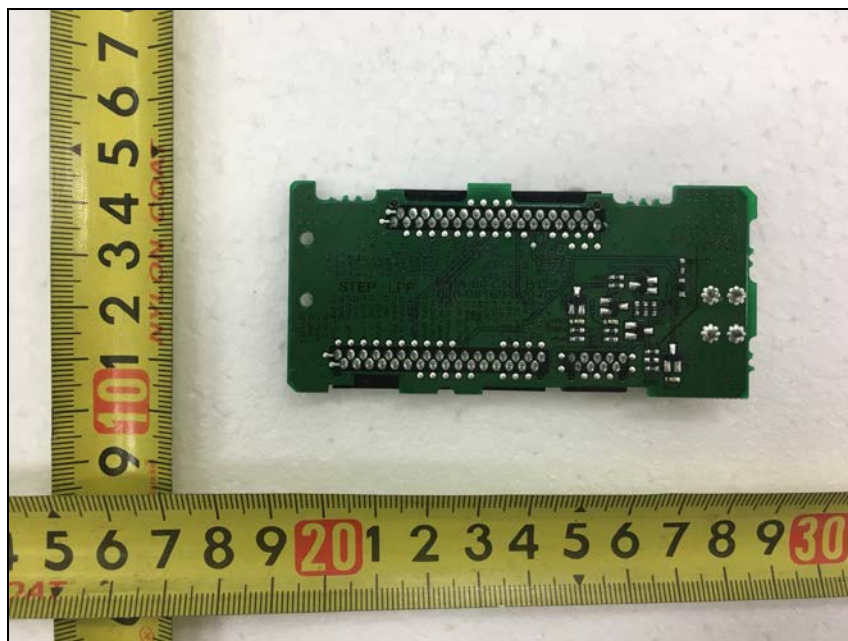
Bottom view of AUDIO B'D



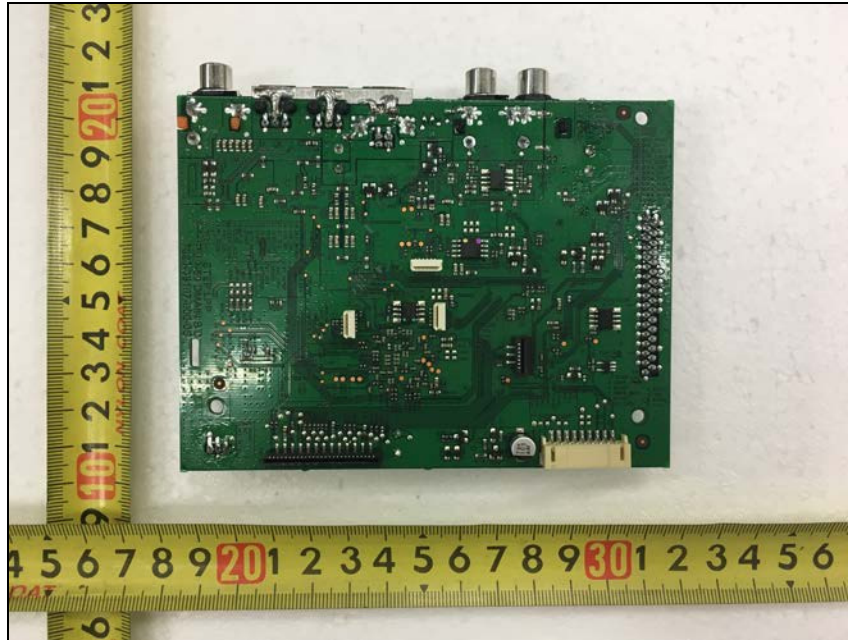
Top view of CNT B'D



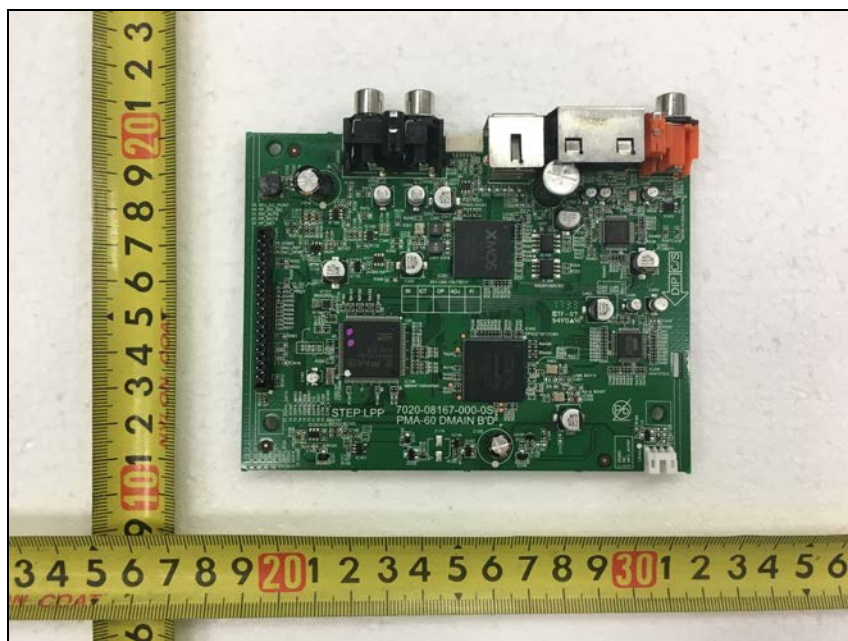
Bottom view of CNT B'D



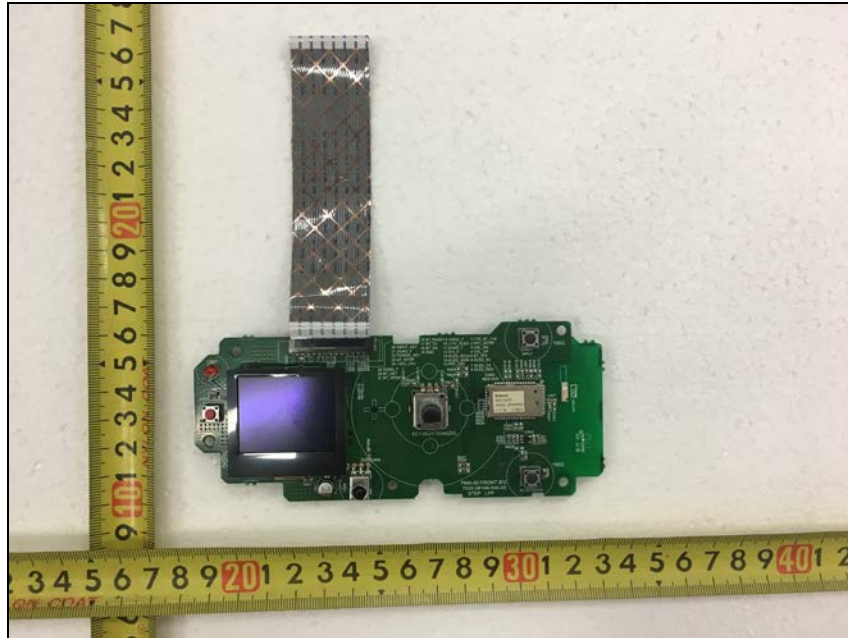
Top view of CNT B'D



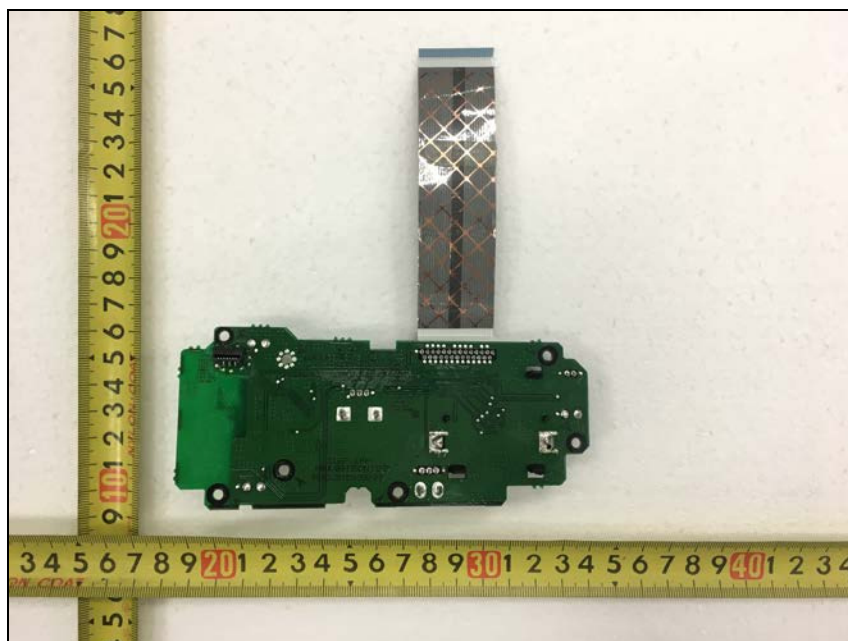
Bottom view of CNT B'D



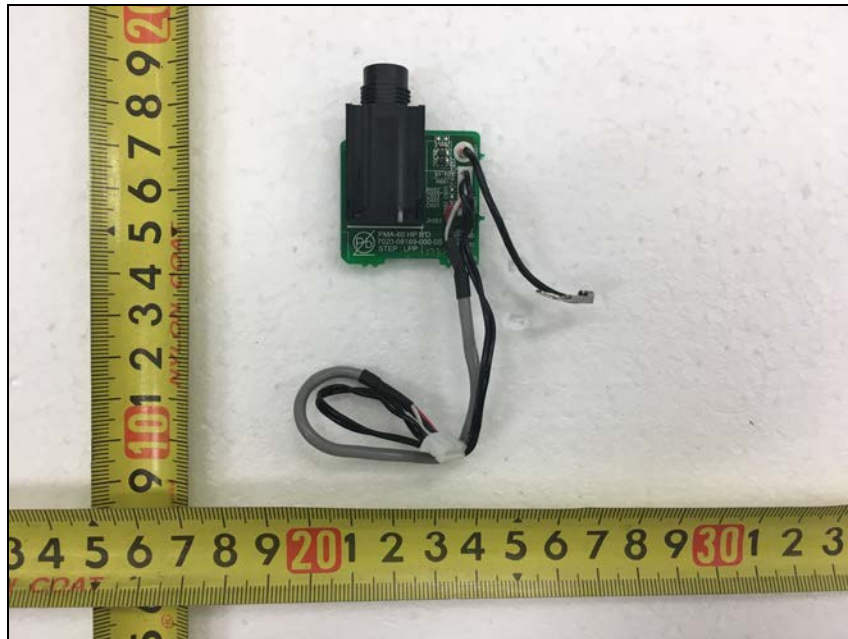
Top view of FRONT B'D



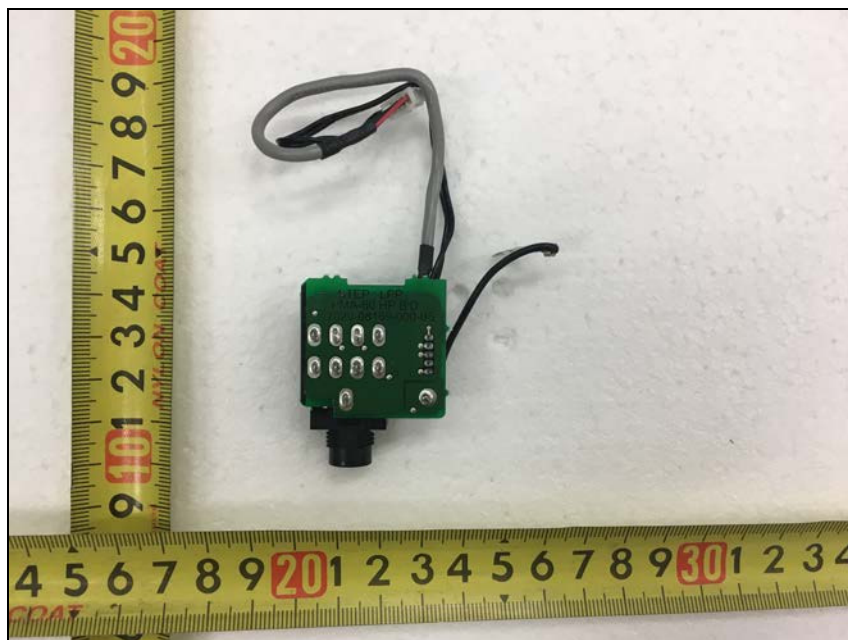
Bottom view of FRONT B'D



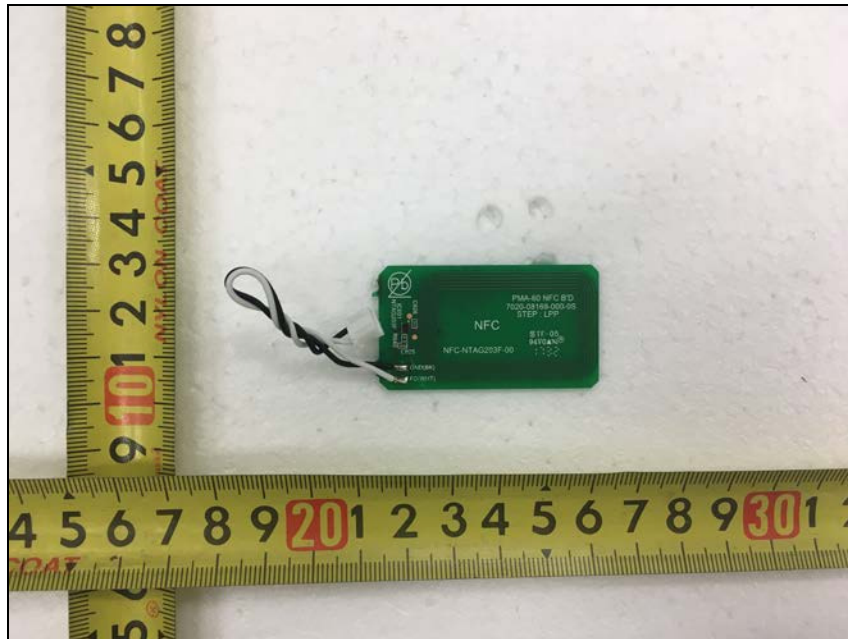
Top view of HP B'D



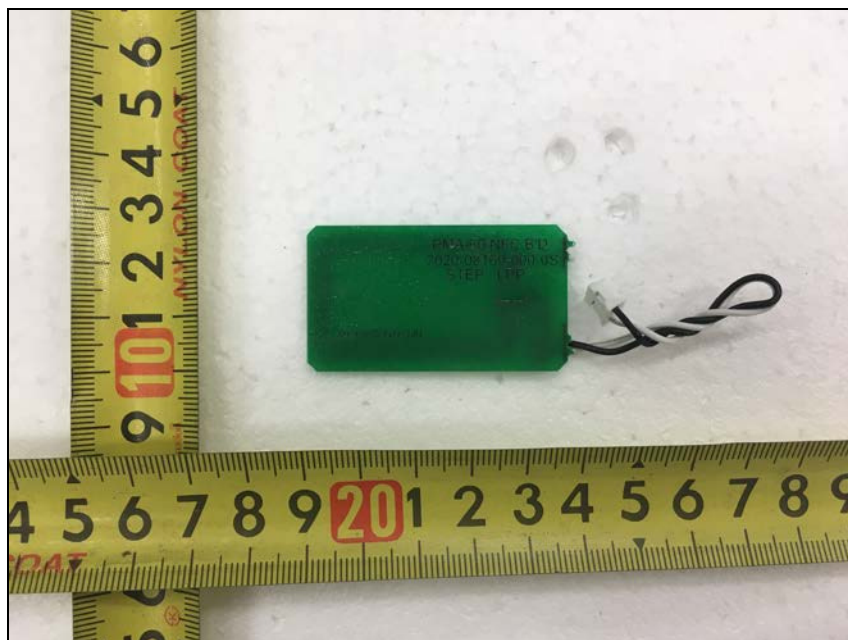
Bottom view of HP B'D



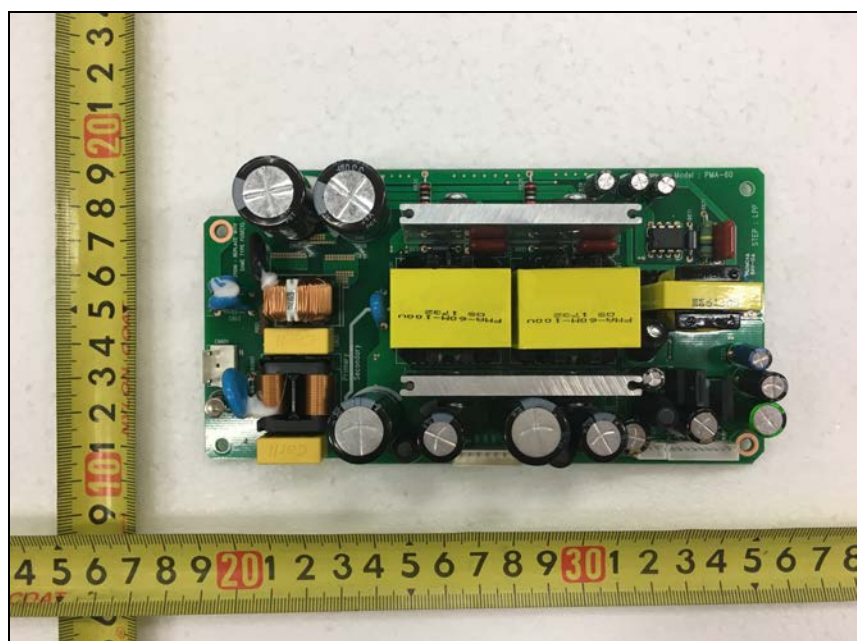
Top view of NFC B'D



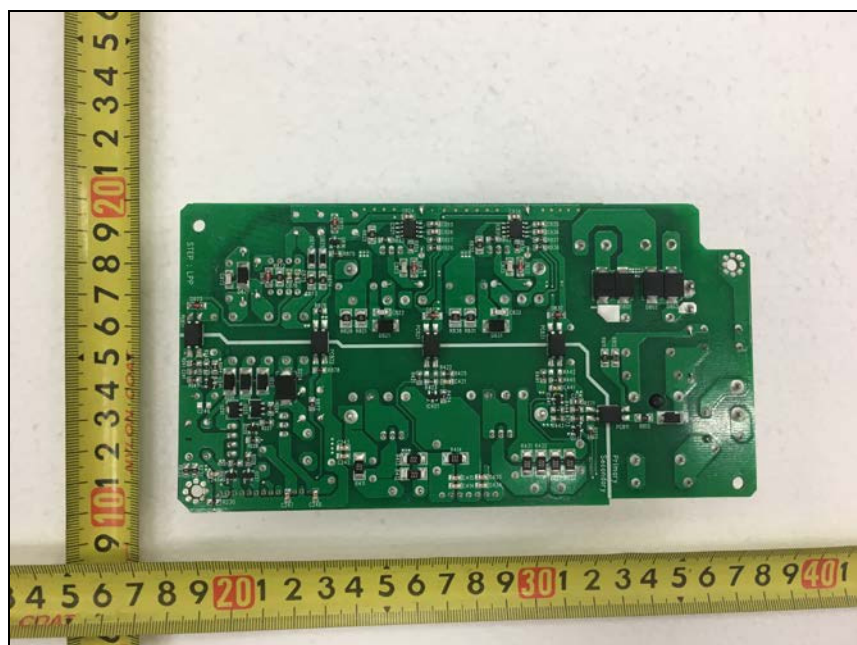
Bottom view of NFC B'D



Top view of SMPS

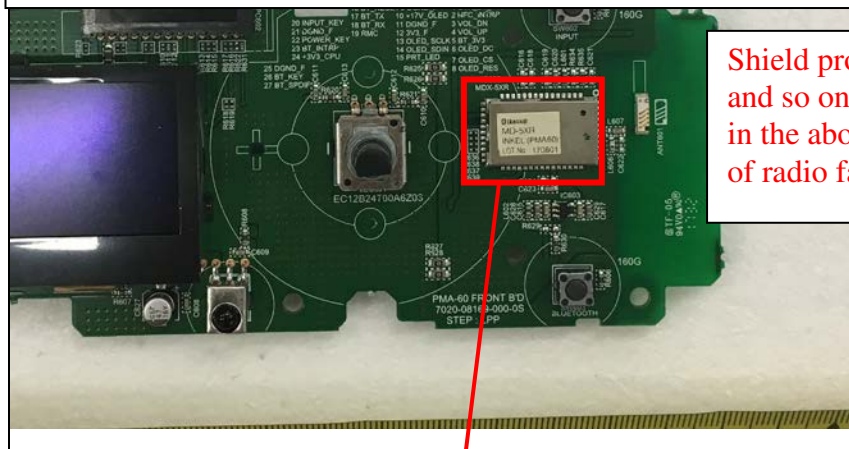


Bottom view of SMPS



Top view of Front PCB (Shield can on Bluetooth module)

It is secured that the structure of the important radio circuit or the system of the specified radio equipment which is in the single housing, shall not be capable of being opened easily as shown in the following picture.



Shield processing and so on is given in the above picture of radio facilities.

Remove Shield can (Bluetooth module)

