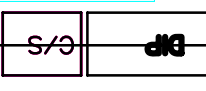
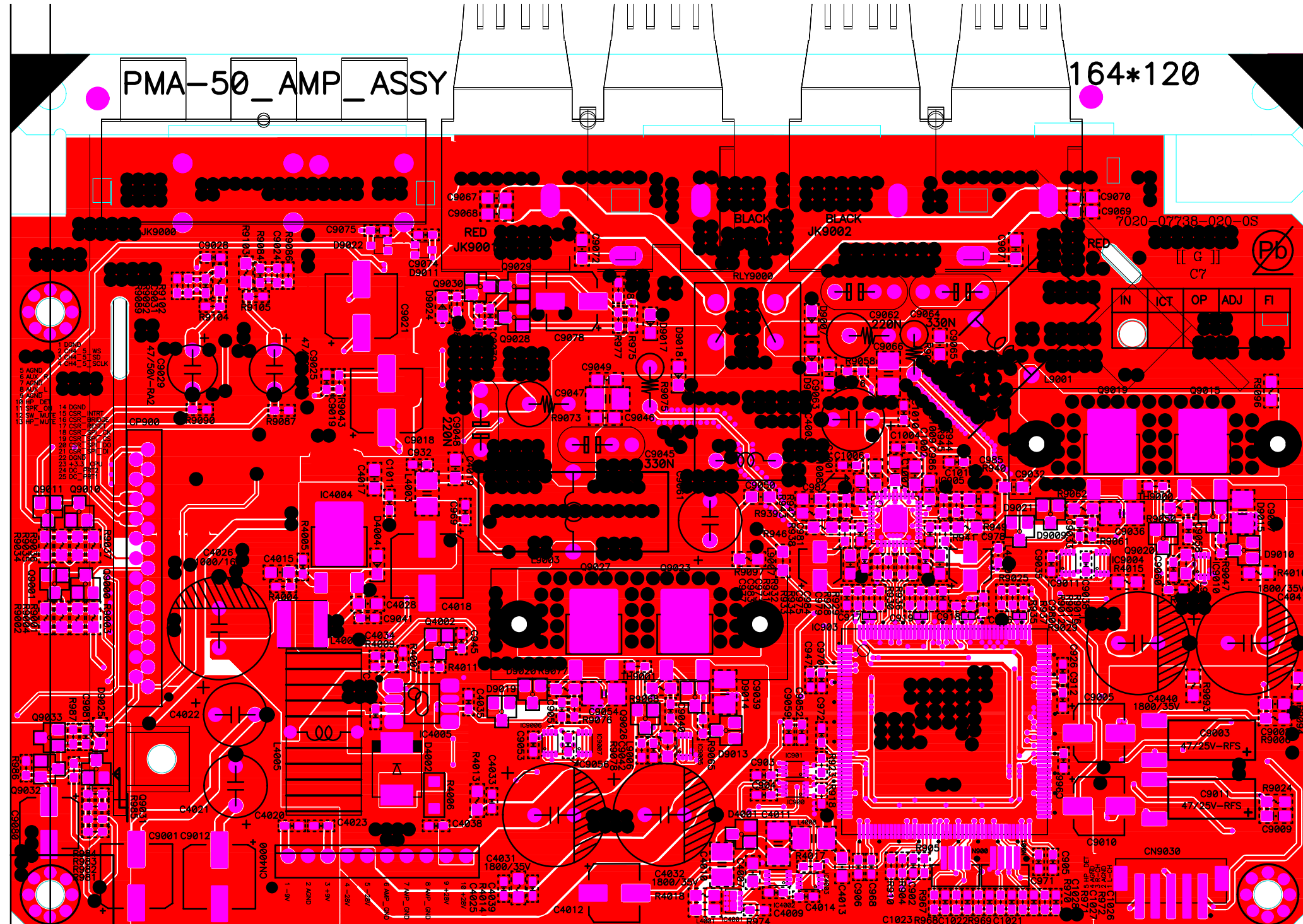


PMA-50_AMP_ASSY

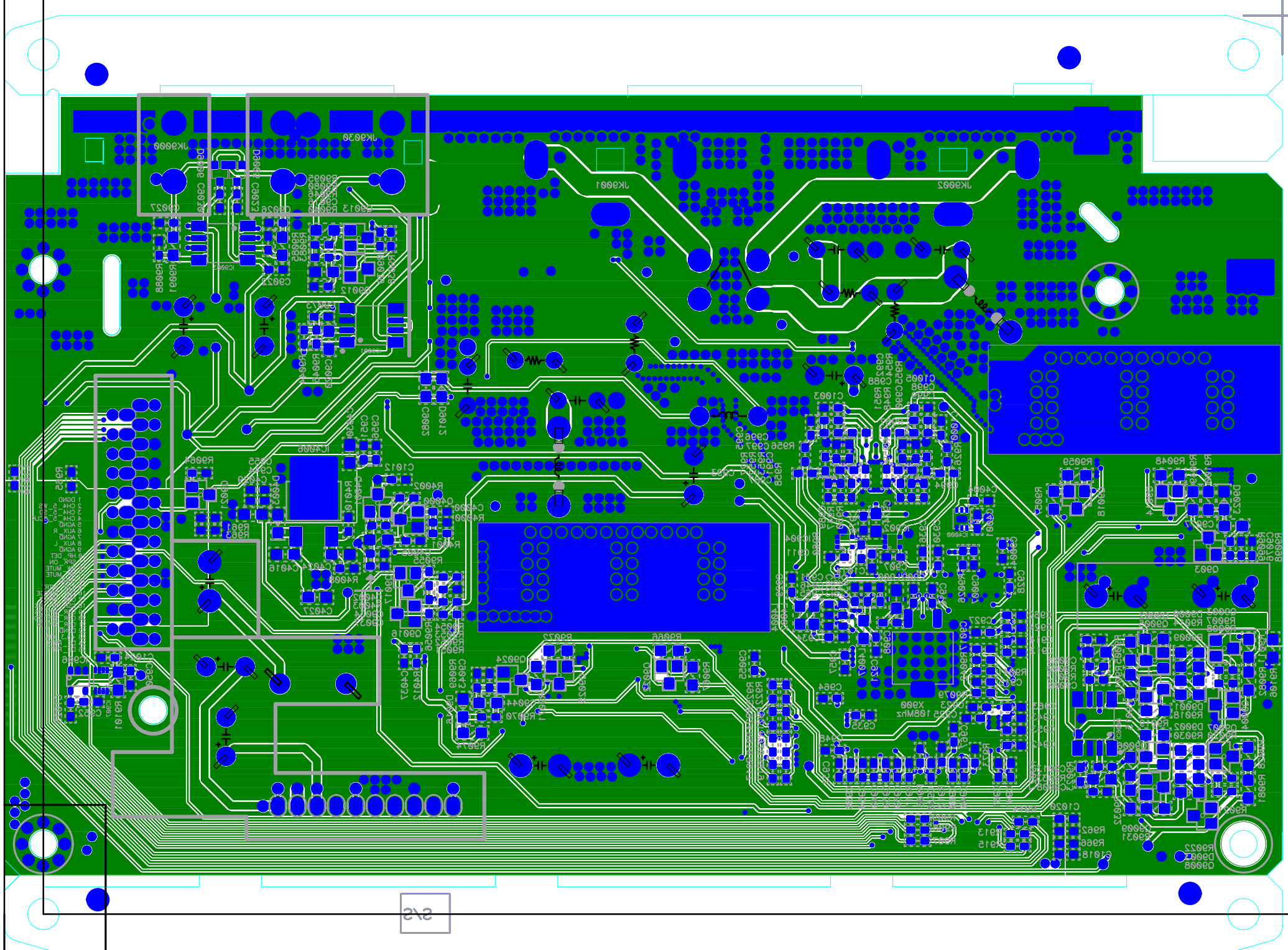
164*120



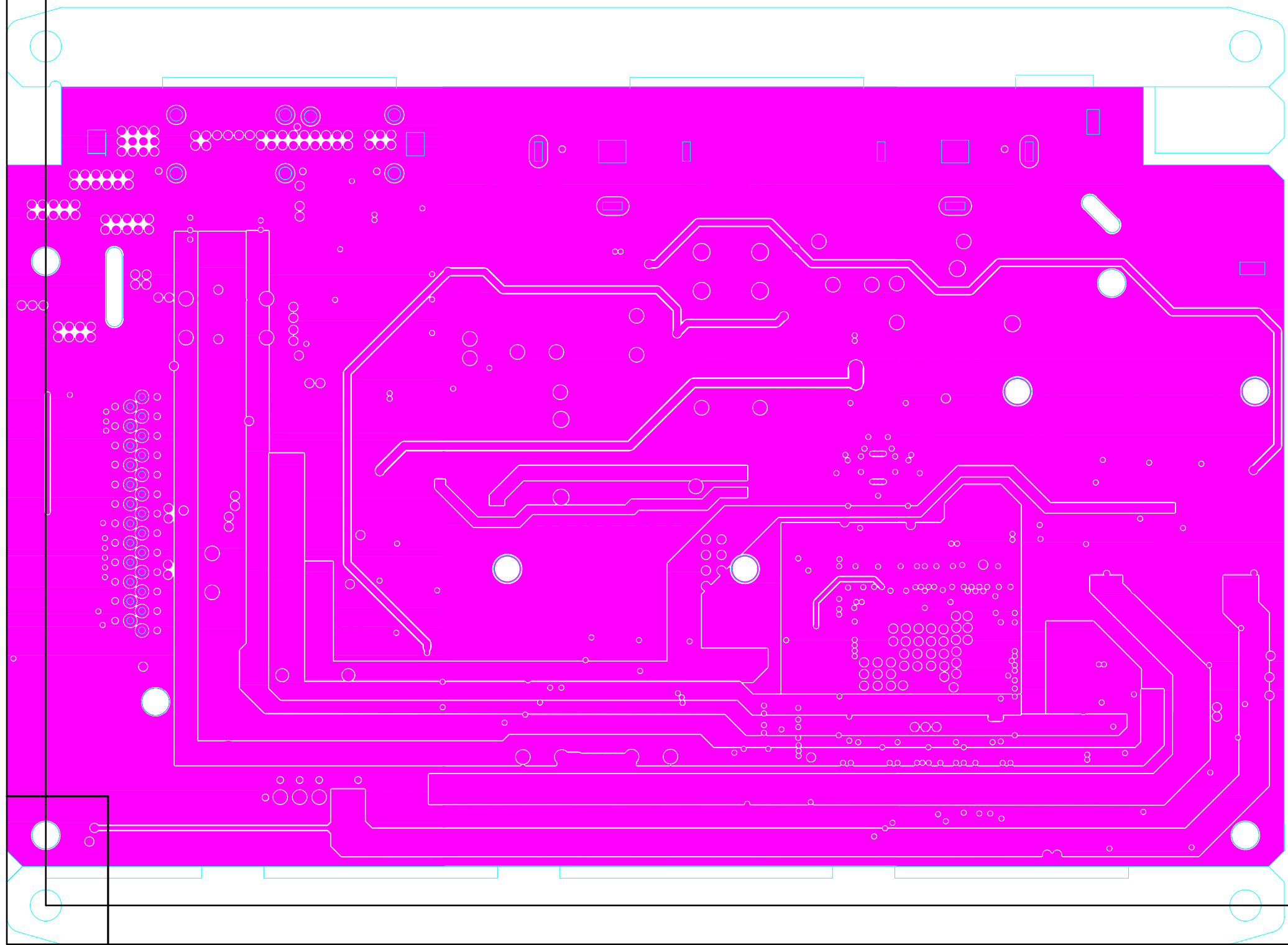
7020-07738-020-0S

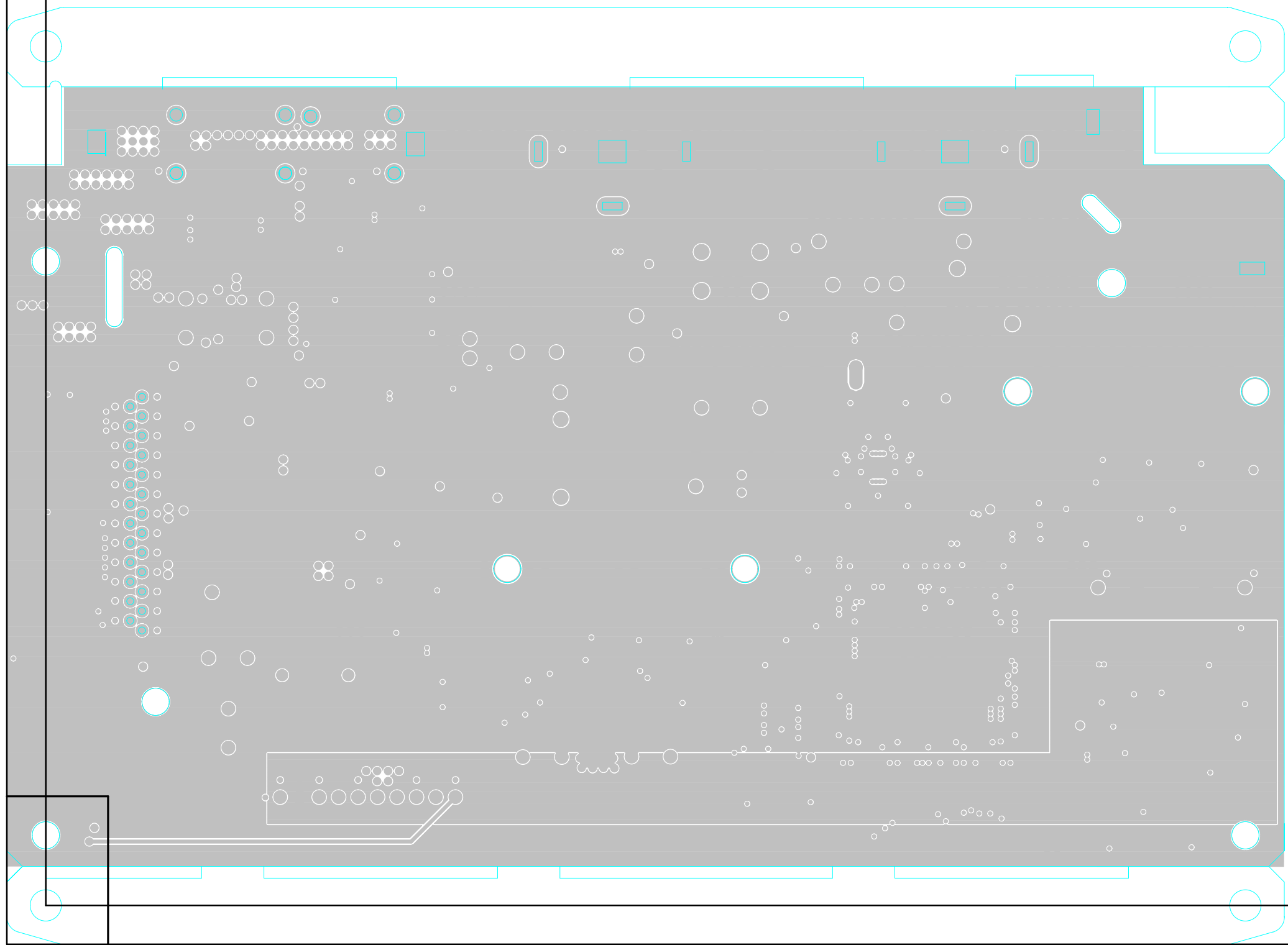
PMA-50_AMP_ASSY

164*120



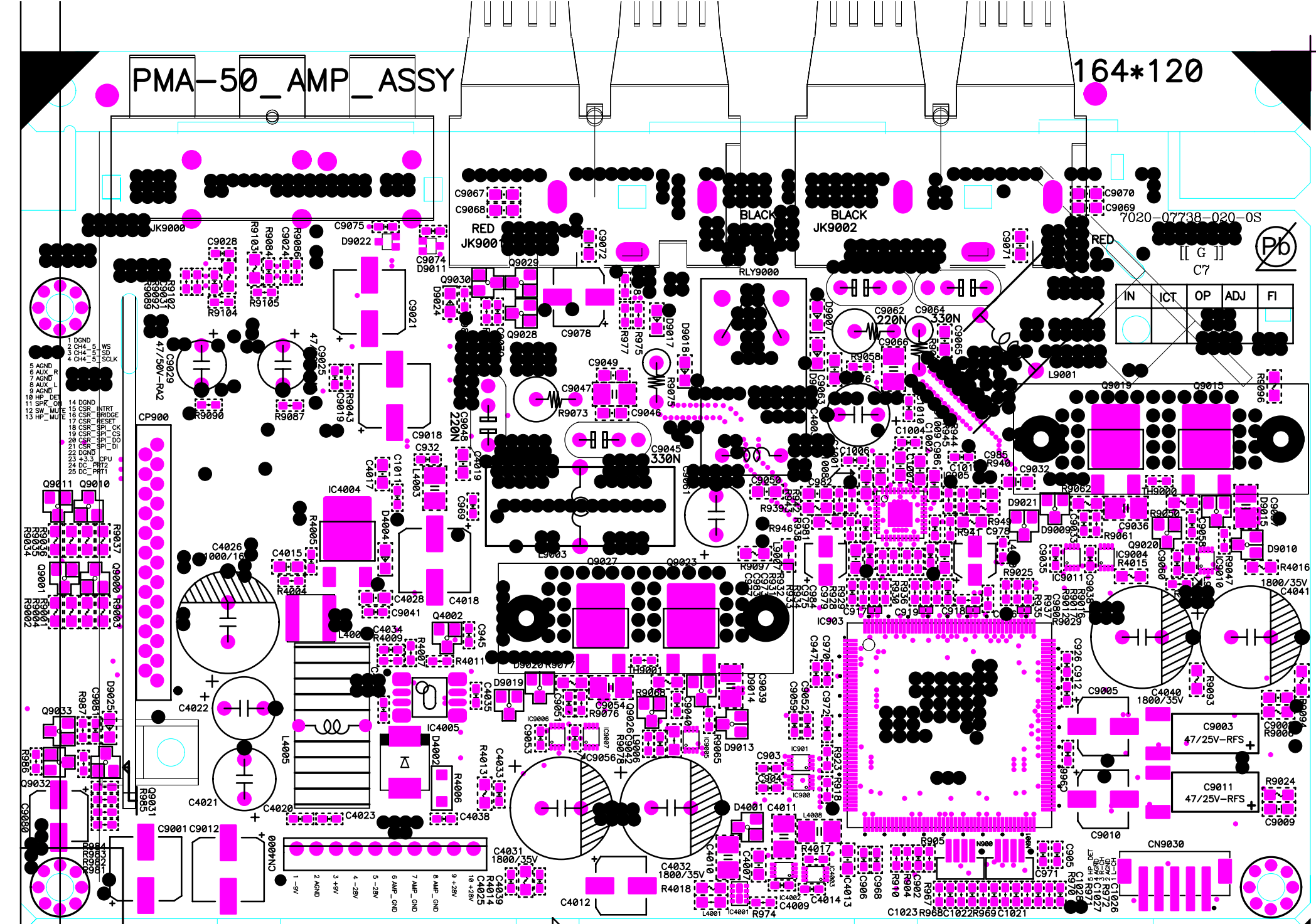
2/2





PMA-50_AMP_ASSY

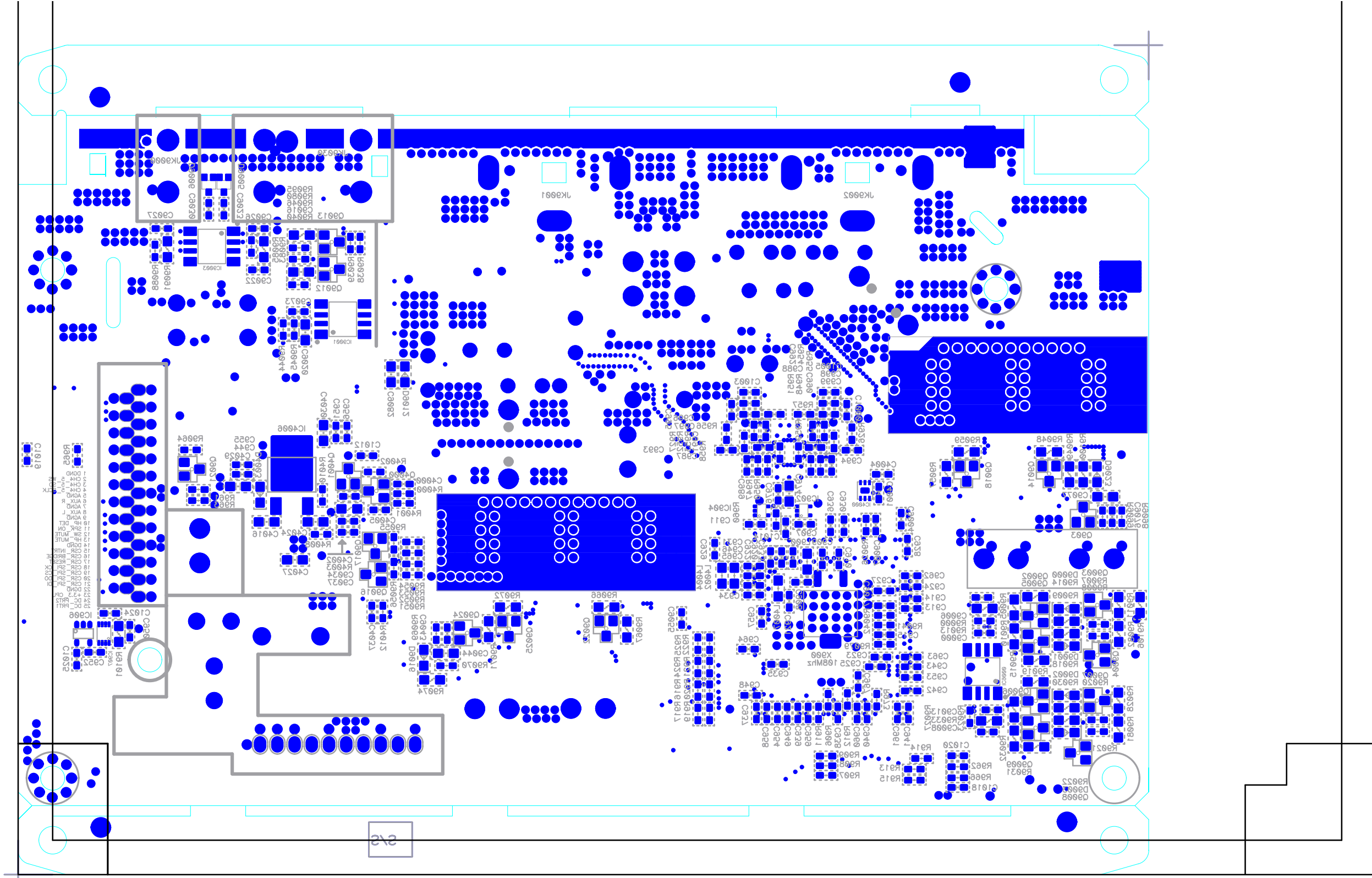
164*120

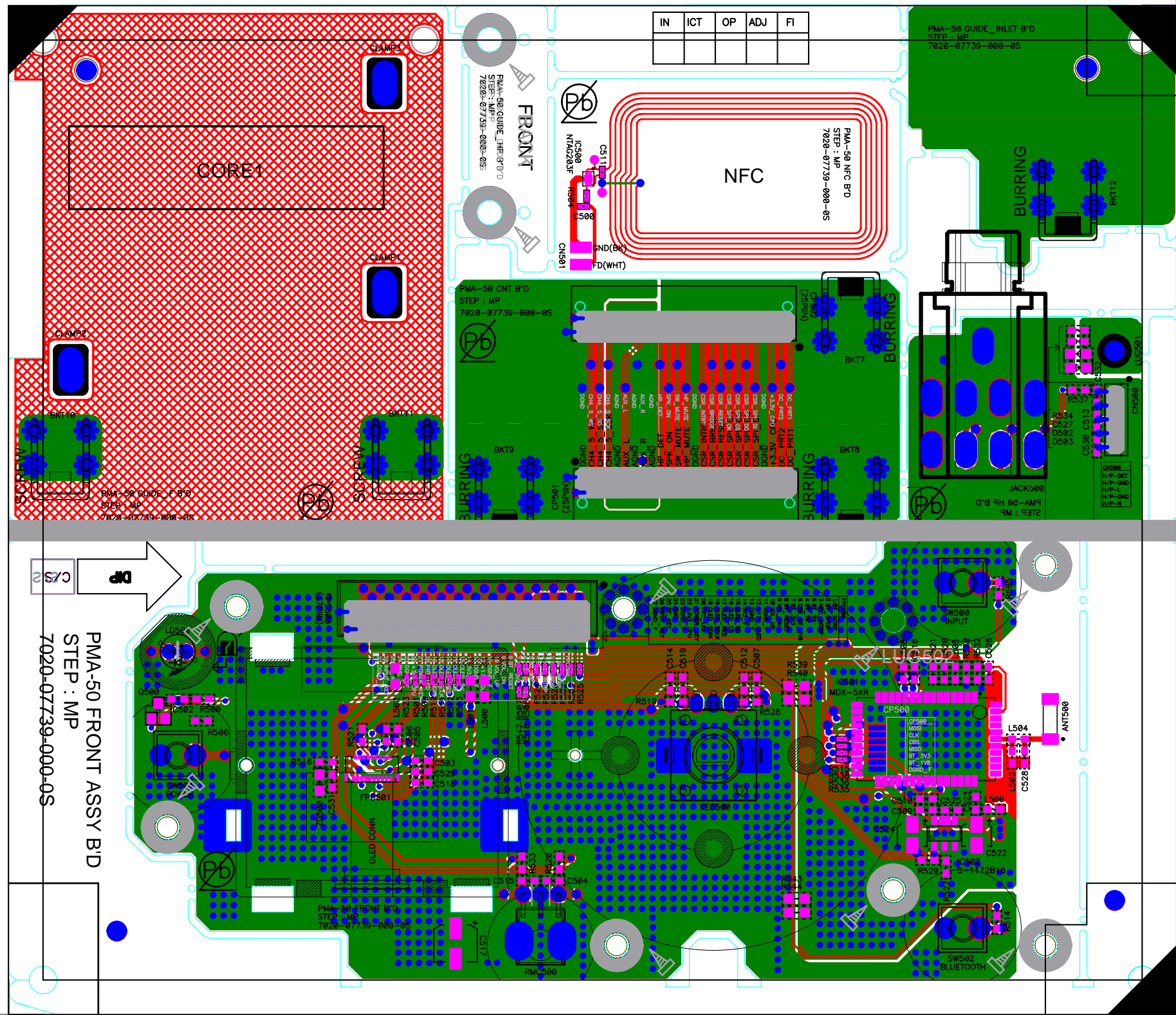


PMA-50_AMP_ASSY

7020-07738-020-0S

164*120





IN	ICT	OP	ADJ	FI

PMA-50 FRONT ASSY B'D
STEP : MP
7020-07739-000-05

PMA-50 GUIDE_INLET B'D
STEP : MP
7020-07739-000-05

PMA-50 CNT B'D
STEP : MP
7020-07739-000-05

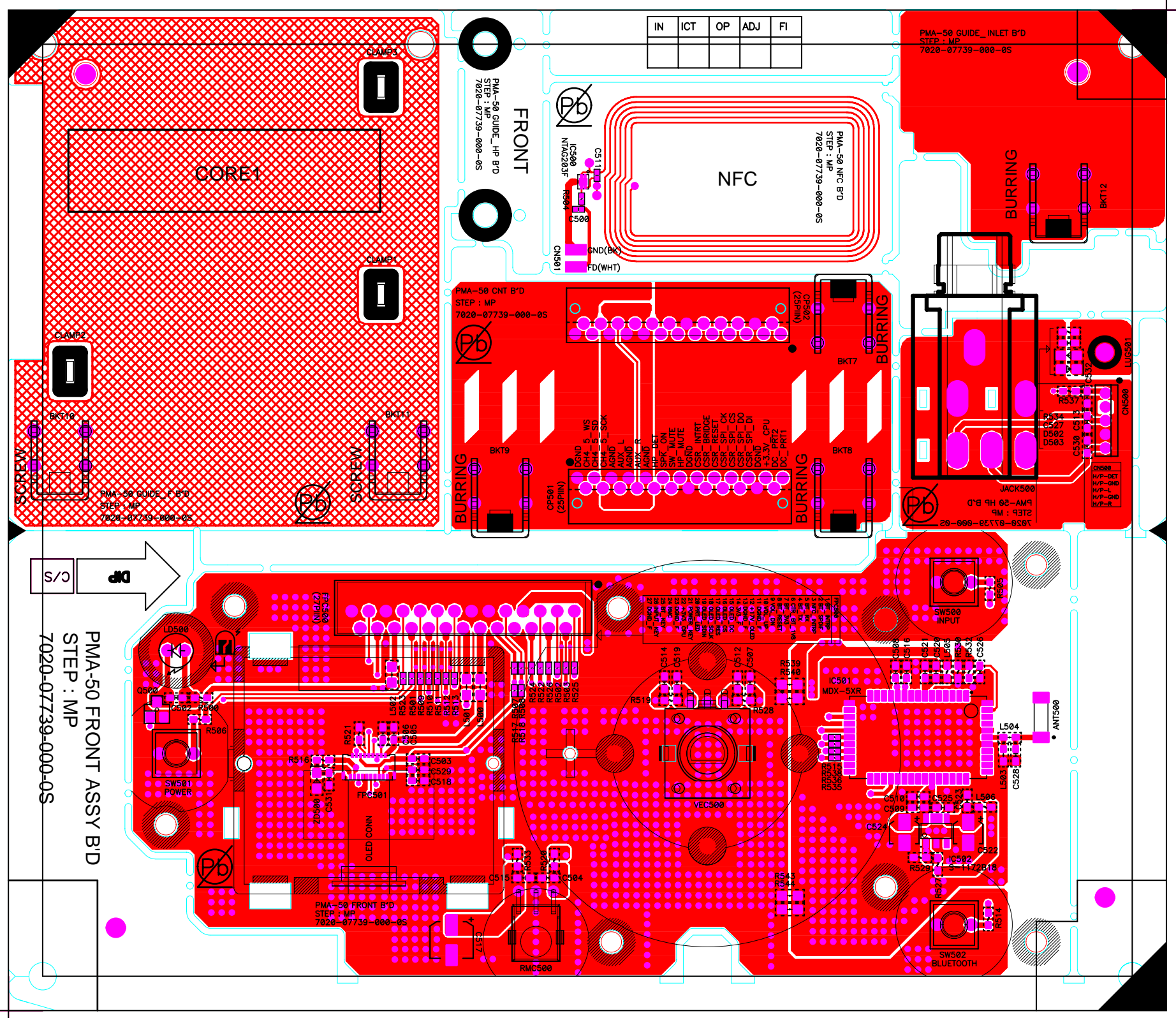
PMA-50 GUIDE_INLET B'D
STEP : MP
7020-07739-000-05

PMA-50 NFC B'D
STEP : MP
7020-07739-000-05

PMA-50 GUIDE_F B'D
STEP : MP
7020-07739-000-05

PMA-50 HP B'D
STEP : MP
7020-07739-000-05

PMA-50 FRONT B'D
STEP : MP
7020-07739-000-05



IN	ICT	OP	ADJ	FI

CORE1

NFC

BARRING

BARRING

SW501 POWER

SW502 BLUETOOTH

SW500 INPUT

VECS00

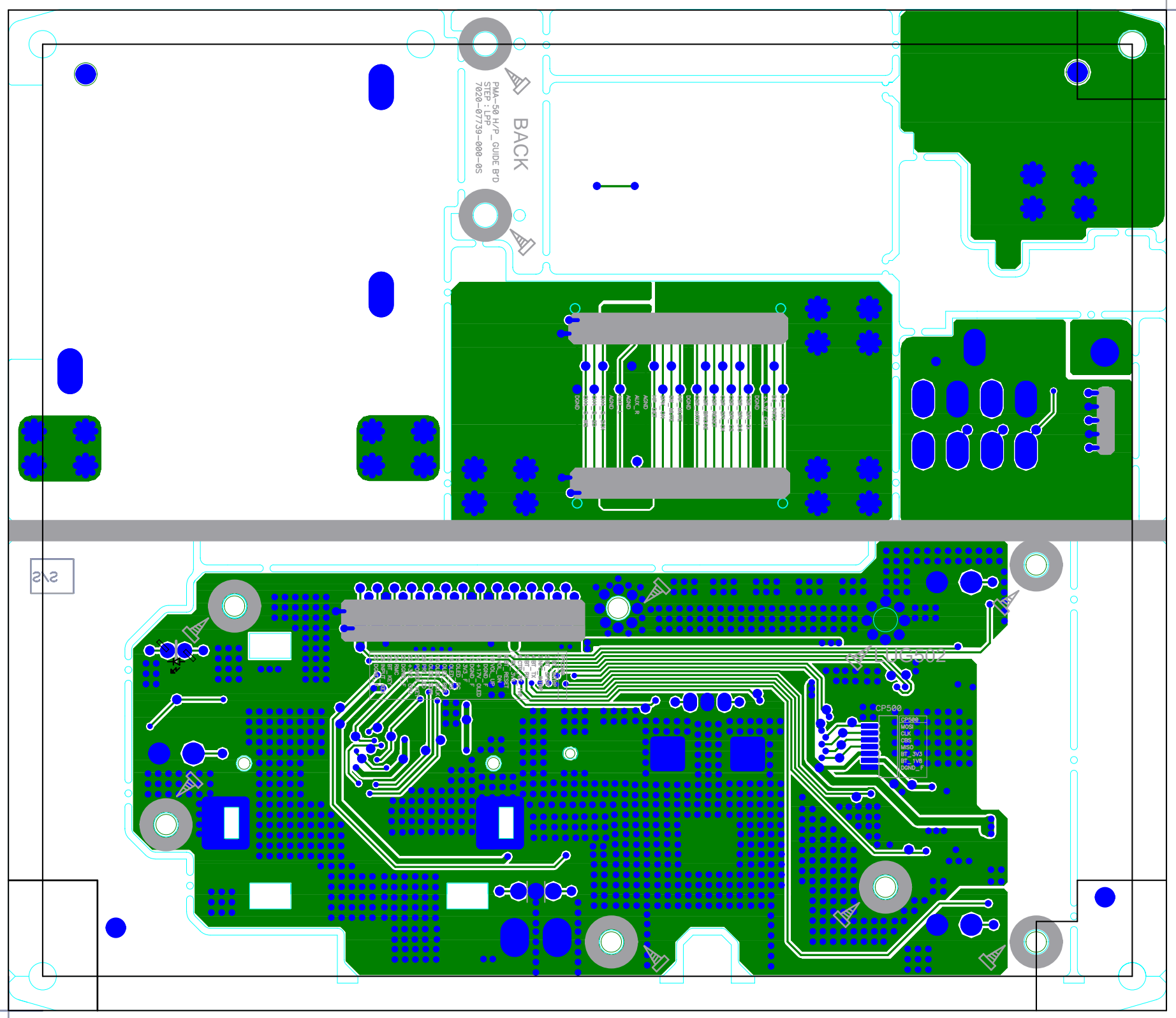
R500 R501 R502 R503 R504 R505 R506 R507 R508 R509 R510 R511 R512 R513 R514 R515 R516 R517 R518 R519 R520 R521 R522 R523 R524 R525 R526 R527 R528 R529 R530

C500 C501 C502 C503 C504 C505 C506 C507 C508 C509 C510 C511 C512 C513 C514 C515 C516 C517 C518 C519 C520 C521 C522 C523 C524 C525 C526 C527 C528 C529 C530

PMA-50 FRONT B'D
STEP: MP
7020-07739-000-05

PMA-50 FRONT ASSY B'D
STEP: MP
7020-07739-000-05

C/S



PMA-50 H/P GUIDE BTD
STEP : LPP-07739-000-05

BACK

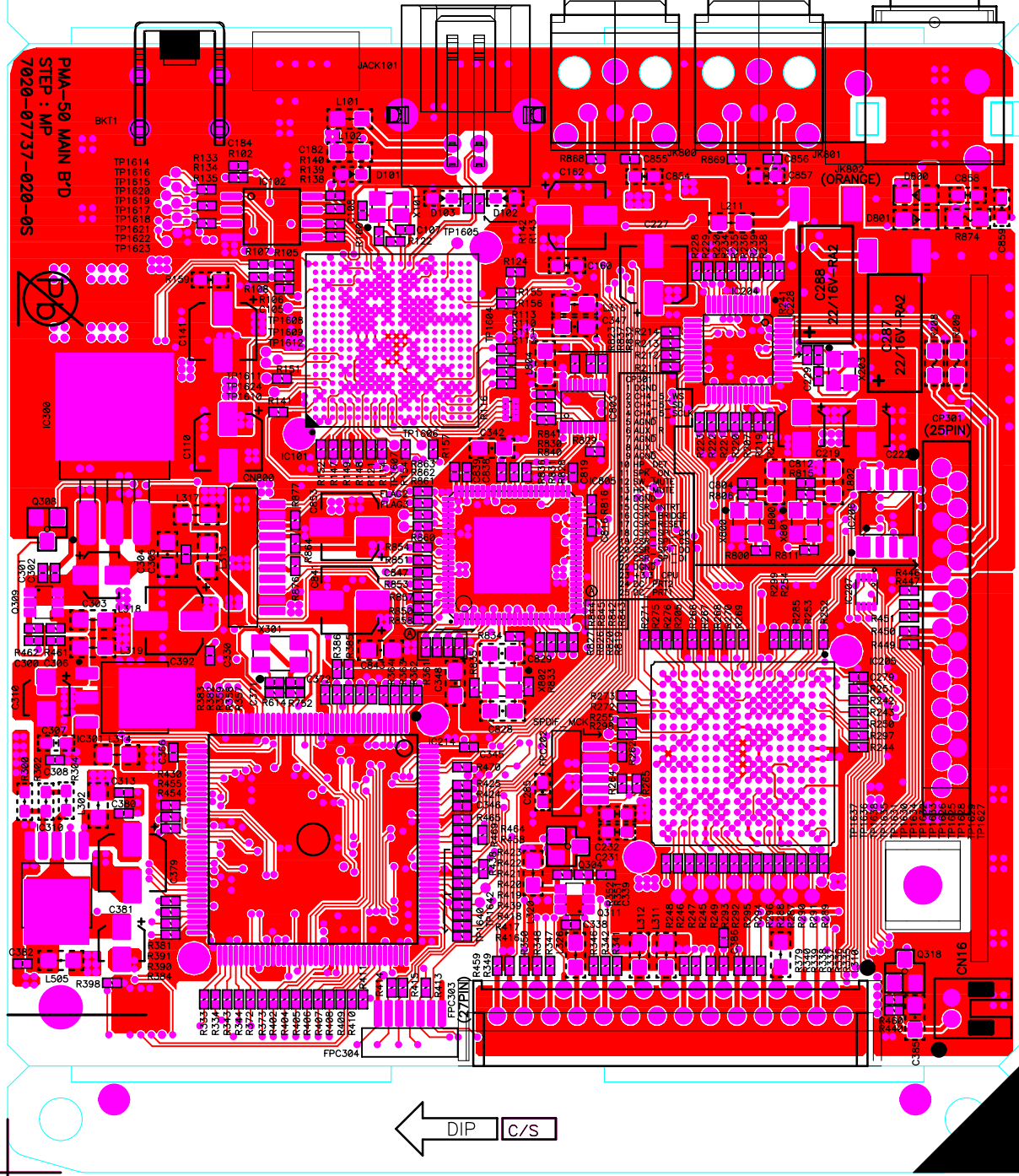
252

U1502

CP500

CP500
MOS
CLK
CS0
MISO
MOSI
BT_TV8
MCRD_F

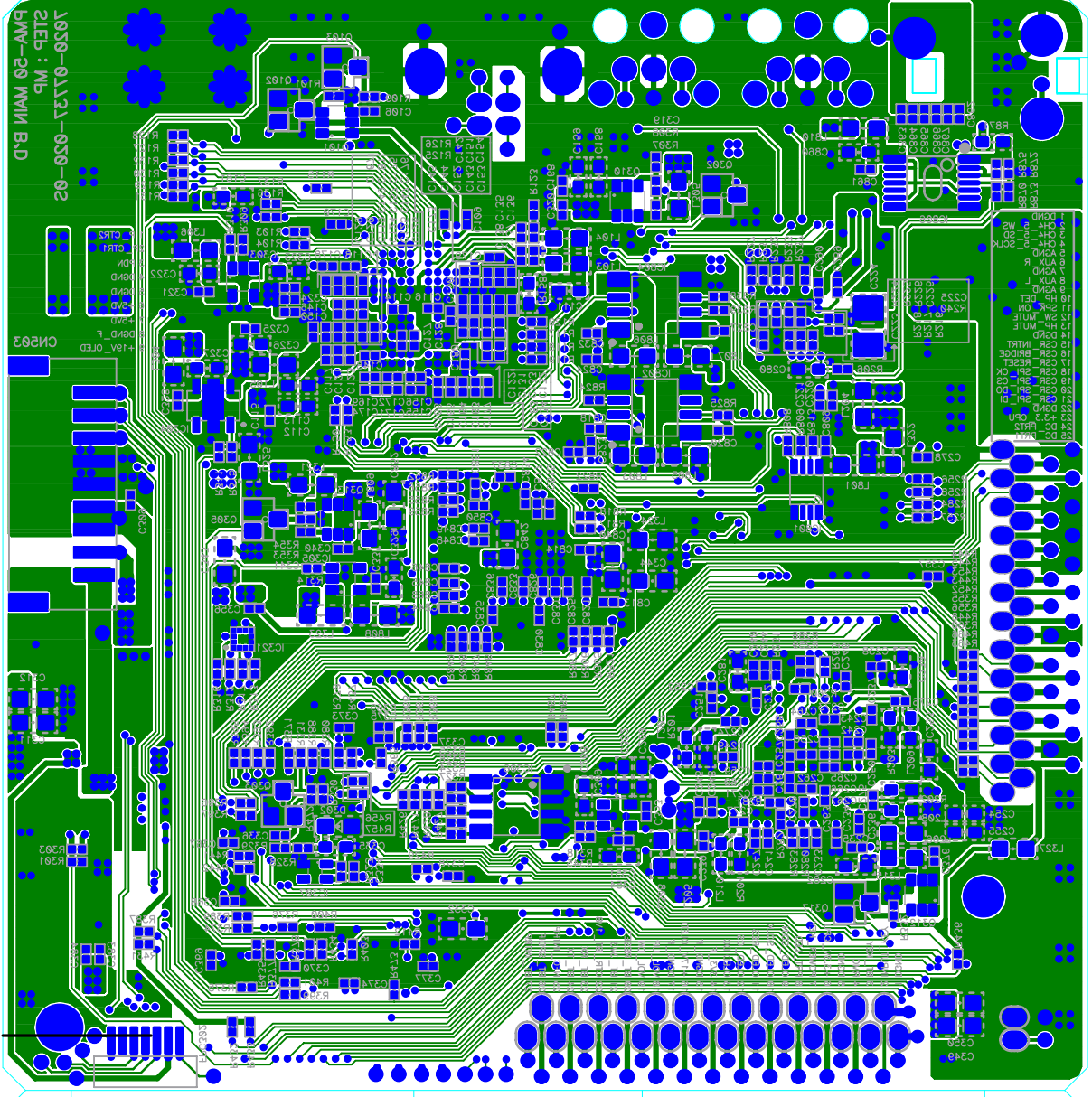
PMA-50 MAIN ASSY B'D
STEP : MP
7020-07737-020-0S



PMA-50 MAIN B'D
STEP : MP
7020-07737-020-0S

← DIP C/S

7050-01131-050-02
STEP : MP
PMA-20 MAIN ASSY B,D



7050-01131-050-02
STEP : MP
PMA-20 MAIN B,D

2/2

