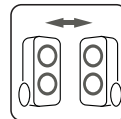
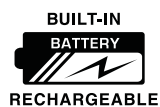


SHARP®

SPEAKER SYSTEM
ENCEINTES ACOUSTIQUES

MODEL
MODÈLE
PS-955

OPERATION MANUAL
MODE D'EMPLOI



ENGLISH

--- Please refer to pages E-1 to E-11

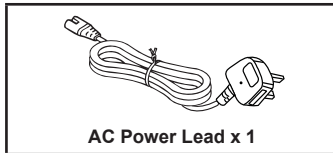
ENGLISH

Introduction

Thank you for purchasing this SHARP product. To obtain the best performance from this product, please read this manual carefully. It will guide you in operating your SHARP product.

Accessory

The following accessory is included.



Contents

	Page		Page
Introduction	1	USB operation	8
Accessory	1	USB playback.....	8
Contents	1	Repeat play	8
Special notes	2	Tuner operation	9
Battery information	3	Tuning.....	9
Removal of waste batteries and accumulators	3	Memorising a station	9
Precautions	4	Auto preset memory/scan.....	9
General.....	4	To tune to a preset station	9
Volume control	4	Audio in operation	9
Controls and indicators	5	Line in/out operation	9
Top view.....	5	Mic operation	9
Front and rear view	5	Microphone volume control	9
System connections	6	Microphone echo control	9
AC connection (Charging the battery).....	6	Key control.....	9
General control	7	Troubleshooting chart	10
To turn the power on or off.....	7	General.....	10
Input mode.....	7	Bluetooth	10
Volume control	7	Condensation	10
Bass control	7	If problem occurs during operation	10
Flashing light	7	Reset to factory default.....	10
Dimmer	7	Maintenance	10
Equalizer	7	Cleaning the cabinet.....	10
Vocal cancel	7	Specification	11
Muting	7	General.....	11
Recording.....	7	Bluetooth	11
Bluetooth operation	8		
Bluetooth connection	8		
Connect two PS-955 via Bluetooth (TWS).....	8		

Special notes

Supply of this product does not convey a license nor imply any right to distribute content created with this product in revenue-generating broadcast systems (terrestrial, satellite, cable and/or other distribution channels), revenue-generating streaming applications (via Internet, intranets and/or other networks), other revenue-generating content distribution systems (pay-audio or audio-on-demand applications and the like) or on revenue-generating physical media (compact discs, digital versatile discs, semiconductor chips, hard drives, memory cards and the like). An independent license for such use is required. For details, please visit <http://mp3licensing.com>

MPEG Layer-3 audio coding technology licensed from Fraunhofer IIS and Thomson.

The *Bluetooth*® word mark and logos are registered trademarks owned by Bluetooth SIG, Inc. and any use of such marks by SHARP is under license. Other trademarks and trade names are those of their respective owners.

Warnings:

- When this unit is in stand-by condition, mains voltage is still present inside the unit.
- This unit contains no user serviceable parts. Never remove covers unless qualified to do so.
- This unit contains dangerous voltages, always remove mains plug from the socket before any service operation and when not in use for a long period.
- To prevent fire or shock hazard, do not expose this appliance to dripping or splashing. No objects filled with liquids, such as vases, shall be placed on the apparatus.

Note:

Audio-visual material may consist of copyrighted works which must not be recorded without the authority of the owner of the copyright. Please refer to relevant law in your country.

Special notes (continued)

■ Battery information

- A rechargeable battery has a long service life if treated properly.
- A new battery or one that has not been used for a long period of time could have reduced capacity the first few times it is used. Do not expose the battery to extreme temperatures, never above 40°C (104°F) or below 5°C (41°F).
- For maximum battery capacity, use the battery at room temperature.
- If the battery is used in low temperatures, the battery capacity will be reduced. The battery can only be charged in temperatures between 5°C (41°F) and 40°C (104°F).
- **RISK OF EXPLOSION IF BATTERY IS REPLACED BY AN INCORRECT TYPE. DISPOSE OF USED BATTERIES ACCORDING TO THE INSTRUCTIONS.**

■ Removal of waste batteries and accumulators

(Product with embedded battery ONLY)

In case this product contains a battery incorporated within the product which cannot be readily removed by end users, SHARP recommends that only qualified professionals remove the battery, either for replacement or for recycling at the end of this product's working life. To prevent damage to the product, and for their own safety, users should not attempt to remove the battery and should contact authorised independent service providers for advice.

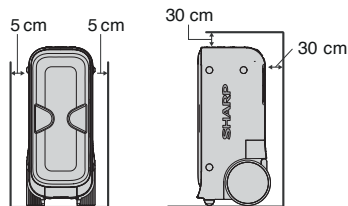
CAUTION:

- Internal lithium battery in the unit should not be replaced by end users due to danger of explosion if battery is incorrectly replaced and must be replaced with the exact type battery by authorised service providers.
- Risk of explosion if the battery is replaced by an incorrect type.
- High or low extreme temperatures that a battery can be subjected to during use, storage or transportation; and low air pressure at high altitude.
- Replacement of a battery with an incorrect type that can defeat a safeguard (for example, in the case of some lithium battery types);
- Disposal of a battery into fire or a hot oven, or mechanically crushing or cutting of a battery, that can result in an explosion.
- Leaving a battery in an extremely high temperature surrounding environment that can result in an explosion or the leakage of flammable liquid or gas.
- A battery subjected to extremely low air pressure that may result in an explosion or the leakage of flammable liquid or gas.
- Batteries (battery pack or batteries installed) shall not be exposed to excessive heat such as sunshine, fire or the like.

Precautions

■ General

- Please ensure that the equipment is positioned in a well ventilated area and ensure that there is a free space along the sides, top and back of the equipment as below.



- Use the unit on a firm, level surface free from vibration.
- Keep the unit away from direct sunlight, strong magnetic fields, excessive dust, humidity and electronic/electrical equipment (home computers, facsimiles, etc.) which generate electrical noise.
- Do not place anything on top of the unit.
- Do not expose the unit to moisture, to temperatures higher than 40°C (104°F) or below 5°C (41°F).
- If the unit does not work properly, unplug and plug it in again. Then turn on the unit.
- In case of an electrical storm, unplug the unit for safety.
- Hold the AC power plug by the head when removing it from the wall socket, as pulling the lead can damage internal wires.
- The AC power plug is used as a disconnect device and shall always remain readily operable.
- **Do not remove the outer cover, as this may result in electric shock. Refer internal service to your local SHARP service facility.**
- The ventilation should not be impeded by covering the ventilation openings with items, such as news papers, tablecloths, curtains, etc.
- No naked flame sources, such as lighted candles, should be placed on the apparatus.
- Attention should be drawn to the environmental aspects of battery disposal.
- Always follow basic safety precautions when using this appliance, especially when children are present.
- Children should be supervised to ensure that they do not play with the appliance.
- Do not disconnect or connect the power lead with wet hands. It may cause an electric shock.
- Do not use this product immediately after unpacking. Wait until it warms up to room temperature before using it.
- Ensure the product and its parts is not overhanging the edge of the supporting furniture.
- Do not install near any heat sources such as radiators, heat registers, stoves or other apparatus (including amplifiers) that produce heat.
- Don't mount this product on a wall or ceiling.
- Do not place the unit near TVs, speakers and other objects that generate magnetic fields.
- Do not leave the unit unattended when it is in use.
- Storms are dangerous for all electric appliances. If the mains or aerial wiring is struck by lightning, the appliance might get damaged, even if it is turned off.
- All the cables and connectors should be disconnected from the appliance before a storm.
- This unit should only be used within the range of 5°C - 40°C (41°F - 104°F).
- SHARP are not responsible for damage due to improper use. Refer all servicing to a SHARP authorised service centre.

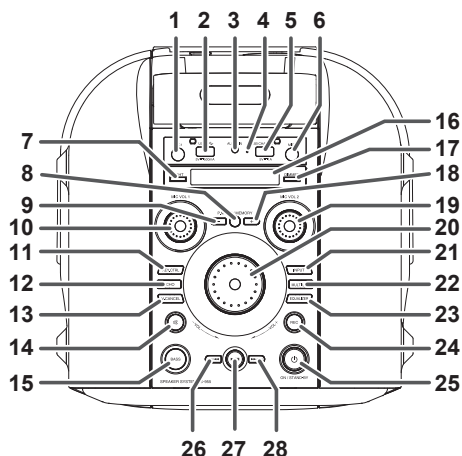
Warning:

The voltage used must be the same as that specified on this unit. Using a higher voltage is dangerous and may result in a fire or other type of accident causing damage. SHARP will not be held responsible for any damage resulting from such usage.

■ Volume control

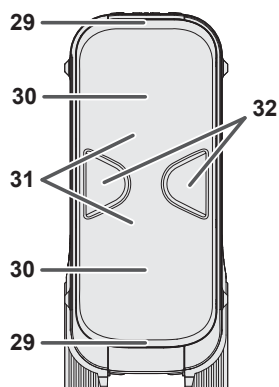
The sound level at a given volume setting depends on speaker efficiency, location and various other factors. It is advisable to avoid exposure to high volume levels, which occurs while turning the unit on with the volume control setting up high, or while continually listening at high volumes.

Controls and indicators



■ Top view

1. 6.3mm MIC 1 Terminal
2. USB Terminal
3. 3.5mm AUDIO IN Terminal
4. Restart Button
5. USB Charge Terminal
6. 6.3mm MIC 2 Terminal
7. LIGHT Button
8. PLAY MODE / MEMORY Button
9. Tuner Station Skip Down Button
10. Microphone 1 Volume Control Knob
11. Key Control Button
12. Microphone Echo Control Button
13. Vocal Cancel Button
14. Mute Button
15. Bass Button
16. LCD Display
17. DIMMER Button
18. Tuner Station Skip UP Button
19. Microphone 2 Volume Control Knob
20. Volume Control Knob
21. INPUT Button
22. MULTI LINK Button
23. EQUALIZER Button
24. Record Button
25. ON / STAND BY Button
26. Track Skip Down Button
27. Play / Pause Button
28. Track Skip Up Button



■ Front and rear view

29. Strobe Light
30. Woofer
31. Flashing LED Light
32. Mid range
33. Handle
34. FM aerial
35. Microphone Holder
36. Bass Reflex Duct
37. Wheels
38. LINE IN/OUT RCA Terminals
39. AC Input Terminal
40. Wheel Stopper

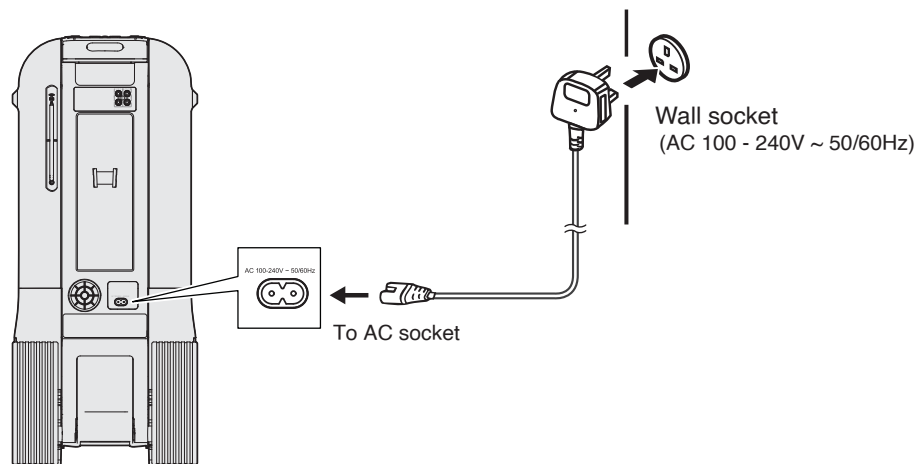
System connections

■ AC connection (Charging the battery)

1. Plug the AC power lead into the AC socket at the back of the unit.
2. Plug the AC power lead into a wall socket.

Notes:

- Unplug the AC power lead from the wall socket if the system will not be used for a prolonged period of time.
- Use only the supplied AC power lead. Using other AC power lead may cause an electric shock or fire.



Before using this unit, it is recommended that the internal lithium-ion battery is fully charged. Plug in the AC power lead and the battery starts charging. The display will show the battery charging status. When fully charged, remove the AC power lead from the AC socket.

Full charge : Battery indicator – 3 bars light up.

When the battery charge is low, 'beep' sound is heard and the battery indicator will be blinking.

WARNING:

Do not attempt to change or replace the battery. This can only be carried out by a qualified technician.

General control

■ To turn the power on or off

Press and hold the ON / STAND-BY button to turn the unit on. Press again to turn it off.

NOTE:

In USB / Bluetooth / AUDIO IN / LINE IN mode, when the unit is not receiving any signal for around 15 minutes, it will automatically switch into standby mode. Press and hold the ON / STAND-BY button to turn on the unit again.

Please note that low volume setting in the audio source may be recognized as “no audio signal”. This will affect the capability of signal detection from the device and can also originate an automatic switch into standby mode. If this happens please reactivate the audio signal transmission or increase the volume setting on the audio source player in order to resume playback.

■ Input mode

To change the function modes, press the INPUT button repeatedly.



■ Volume control

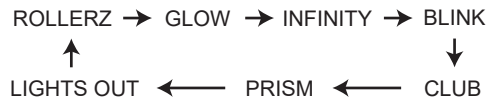
Rotate the VOL +/- knob on the unit to increase or decrease the music volume.

■ Bass control

Press the BASS button on the unit repeatedly to select bass on or off.

■ Flashing light

There are 8 modes for the DISCO LED lighting. Press the LIGHT button to choose the light modes.



Press and hold the LIGHT button to switch the strobe light on or off.

■ Dimmer

Press the DIMMER button repeatedly to select the display background light intensity.



■ Equalizer

Press the EQUALIZER button repeatedly to select the preset sound.



■ Vocal cancel

Press the V. CANCEL button repeatedly to cancel or resume the sound of music:



■ Muting

To mute the volume, press the  button. Press it again to restore the volume.

■ Recording

The unit can record tracks from other input modes into the USB drive.


1. Insert a USB drive into the USB terminal.
2. Press the REC button to start recording.
3. Play a track to be recorded from other input modes (Bluetooth, Line in, Audio in, Tuner).
4. Press the REC button again to stop recording.

Notes:

- Recording tracks from USB to USB is not possible.
- Do not unplug the USB drive from the unit when recording is in progress.

Bluetooth operation

■ Bluetooth connection

1. Press the INPUT button on the unit repeatedly to select BLUETOOTH function. “” will be blinking on the display.
2. Turn on the Bluetooth function on the source device, scan the unit “PS-955 SHARP” and connect, then input the password 0000 if required. The display will stop blinking once the connection is done.
3. Press ►/II button to start playback.
4. Rotate the VOLUME knob on the unit or adjust the volume on the source device to increase or decrease the music volume to your desired level.
5. To skip up or down a track, press ◀◀/◀◀ or ▶▶/▶▶ button.
6. To pause playback, press ►/II button. Press again to resume playback.
7. To disconnect Bluetooth, press and hold the ►/II button.

■ Connect two PS-955 via Bluetooth (TWS)

This unit can be linked with another same unit via Bluetooth.

1. Press the MULTI LINK button on two units. The first unit which MULTI LINK button is pressed will be the host speaker (left channel). Both unit will be linked automatically.
2. Press MULTI LINK button again to disconnect TWS.

Notes :

- The Bluetooth range is about 10 meters without obstacles.
- Pressing the ON/STAND-BY button on the host speaker will turn off both units at the same time.
- This unit will automatically connect to the last connected device when it is turned on.

USB operation

- The unit will automatically switch to USB mode when the USB flash drive is plugged in.
- This unit provides one USB terminal for music playback.

■ USB playback

1. Press the INPUT button repeatedly on the unit to select USB mode.
2. Plug the USB flash drive to the USB PLAYBACK terminal on top of the unit. Playback will start automatically.
3. To pause playback, press the ►/II button on the unit.
4. To resume playback, press the ►/II button again.
5. To select a desired track, press the ◀◀/◀◀ or ▶▶/▶▶ button respectively until the desired track appears on the display. The unit will start play automatically.
6. To fast forward or fast reverse during playback, press and hold the ◀◀/◀◀ or ▶▶/▶▶ button. Release the button for normal playback mode.

Notes :

- The USB PLAYBACK terminal is intended for data transfer only, other devices cannot be used with this USB connection.
- The use of USB extension cords is not recommended.
- Do not unplug the USB from the unit when playing or reading the USB device.

■ Repeat play

You can play one track or all tracks on the USB repeatedly.

To repeat a single track

Press the P.MODE/MEMORY button repeatedly to select “*REP ONE*”. Only the current track will be played repeatedly.

To repeat all the tracks

Press the P.MODE/MEMORY button repeatedly to select “*REP ALL*”. All tracks in the USB will be played repeatedly.

To repeat the folder (only for USB which contains more than one folder)

Press the P.MODE/MEMORY button repeatedly to select “*FOLDER*”. Only the current folder will be played repeatedly.

To cancel repeat play

Press the P.MODE/MEMORY button repeatedly to select “*REP OFF*”.

Tuner operation

Press the INPUT button repeatedly on the unit until the display appears FM radio frequency.

Note:

Extend the attached aerial to its full length in order to get the best reception.

■ Tuning

Tune to a station by pressing the ◀◀/◀◀ or ▶▶/▶▶ button repeatedly. Press and hold to search continuously. The station frequency is shown on the display.

■ Memorising a station

Tune in to a desired station, then, press P.MODE/MEMORY button to save that station.

■ Auto preset memory/scan

To scan for stations within reception range and save them to preset memory automatically, press and hold the ▶/II button.

After the unit is finished scanning, the unit will automatically tune to preset number 1 (FM01).

This unit can save up to 30 FM stations.

■ To tune to a preset station

To tune to the previous or next preset station, press the P.MODE/MEMORY — or + button.

Audio in operation

1. Press the INPUT button repeatedly until "AUDIO IN" is displayed.
2. Connect your audio device to the AUDIO IN terminal on the top panel of the unit with an audio cable (audio cable is not included).
3. Rotate the VOLUME knob on the unit or adjust the volume on the external device to increase or decrease the music volume to your desired level.
4. Control the playback with your audio device.

Line in/out operation

Use the RCA cable to connect your device to the LINE IN / OUT terminals at the rear panel. Control the playback with your audio device.

MIC operation

Microphone input is available in all modes.

Connect your microphone to the 6.3 mm MIC terminal (1 or 2) located on the top panel of the unit.

■ Microphone volume control

Rotate the MIC VOL 1/2 knob on the unit to increase or decrease the microphone volume.

■ Microphone echo control

Press the ECHO button on the unit repeatedly to change the microphone echo level.

Note:

This function is available when the microphone is inserted.



■ Key control

While connecting with the microphone, press the KEY CTRL button and then rotate the volume knob to adjust the key from: -10 to +10.

Troubleshooting chart

If something is wrong with this product, check the following before calling your authorised dealer or service centre.

■ General

Symptom	Possible cause
● No sound is heard.	<ul style="list-style-type: none"> ● The input signal (selection) is not set properly. ● The volume level is set to "0". ● Muting is activated at external device.
● Noise is heard during playback.	<ul style="list-style-type: none"> ● Move the speaker away from any computers or mobile phones.
● The power is not turned on.	<ul style="list-style-type: none"> ● The unit has not enough battery power. ● The protection circuit may be activated. Switch off and on the unit again. ● Battery is completely depleted. Recharge the battery.

(*1) The time may vary depending on the ambient temperature and the conditions used.

■ Bluetooth

Symptom	Possible cause
● No sound is heard.	<ul style="list-style-type: none"> ● The unit is too far from the Bluetooth audio source device. ● The unit is not paired with the Bluetooth audio source device
● Bluetooth sound is interrupted or distorted.	<ul style="list-style-type: none"> ● The unit is too near to a device that generates electromagnetic radiation. ● There is an obstacle between the unit and the Bluetooth audio source device.

■ Condensation

Sudden temperature changes, storage or operation in an extremely humid environment may cause condensation inside the cabinet. Condensation can cause the unit to malfunction. If this happens, leave the product under room temperature for about 1 hour. Wipe off any condensation on the product with a soft cloth before operating the unit.

■ If problem occurs during operation

When this product is subject to strong external interference (mechanical shock, excessive static electricity, abnormal supply voltage due to lightning, etc.) or if it is operated incorrectly, it may malfunction.

If such a problem occurs, do the following:

1. Switch off and on the unit again.
2. If the unit is not restored in the previous operation, do the reset operation.

■ Reset to factory default

In Line in mode, press and hold ►/II button until "RESET" appears on the display. The unit will return to Bluetooth function (default) when the reset process is completed.

Should the unit be in any irregularity conditions due to various unforeseen reasons, restart it by pressing the Restart button using a pin.

Maintenance

■ Cleaning the cabinet

Periodically wipe the cabinet with a soft cloth.

Caution:

- Do not use chemicals for cleaning (petrol, paint thinner, etc.). It may damage the cabinet finish.
- Do not apply oil to the inside of each component. It may cause malfunctions.

Specification

As part of our policy of continuous improvement, SHARP reserves the right to make design and specification changes for product improvement without prior notice. The performance specification figures indicated are nominal values of production units. There may be some deviations from these values in individual unit.

■ General

Power source	AC 100 - 240 V ~ 50/60 Hz
	DC 14.4 V, 2.5 Ah Rechargeable Battery
Power consumption	Power on: 15 W
Dimensions	Width: 300 mm Height: 696 mm Depth: 322 mm
Weight	11.4 kg
Output power	RMS : Total 60 W (30 W + 30 W) (10% T.H.D.)
Type	2-Way Speaker system 16.5 cm Woofer 7.8 cm Mid Range
Music playback time	(*1) Approx. 5 hours
Battery charging time	(*1) Approx. 4 hours

■ Bluetooth

Frequency bands	2402 MHz - 2480 MHz
Compatible Bluetooth Profile	A2DP (Advanced Audio Distribution Profile), Bluetooth 5.0

(*1) The time may vary depending on the ambient temperature and the conditions used.

FCC/IC STATEMENTS

This device complies with Part 15 of the FCC Rules. Operation is subject to the following two conditions:

- (1) This device may not cause harmful interference, and
- (2) this device must accept any interference received, including interference that may cause undesired operation.

NOTE:

This equipment has been tested and found to comply with the limits for a Class B digital device, pursuant to Part 15 of the FCC Rules. These limits are designed to provide reasonable protection against harmful interference in a residential installation. This equipment generates uses and can radiate radio frequency energy and, if not installed and used in accordance with the instructions, may cause harmful interference to radio communications.

However, there is no guarantee that interference will not occur in a particular installation. If this equipment does cause harmful interference to radio or television reception, which can be determined by turning the equipment off and on, the user is encouraged to try to correct the interference by one of following measures:

- Reorient or relocate the receiving antenna.
- Increase the separation between the equipment and receiver.
- Connect the equipment into an outlet on a circuit different from that to which the receiver is connected.
- Consult the dealer or an experienced radio/TV technician for help.

WARNING:

- Any changes or modifications not expressly approved by the party responsible for compliance could void the user's authority to operate this equipment.

FCC & IC RADIATION EXPOSURE STATEMENT:

This equipment complies with FCC and Canada radiation exposure limits set forth for an uncontrolled environment. This equipment should be installed and operated with a minimum distance of 20cm between the radiator and your body. This transmitter must not be co-located or operating in conjunction with any other antenna or transmitter.

FCC/ IC Déclaration d'exposition aux rayonnements

Cet appareil est conforme à FCC et IC l'exposition aux rayonnements limites fixées pour un environnement non contrôlé. Cet appareil doit être installé et utilisé avec une distance minimale de 20 cm entre le radiateur et votre corps. Cet transmetteur ne doit pas être cositué ou opérant en liaison avec toute autre antenne ou transmetteur.

FCC/IC STATEMENTS

CAN ICES(B)/NMB-3(B)

This device contains licence-exempt transmitter(s)/receiver(s) that comply with Innovation, Science and Economic Development Canada's licence-exempt RSS(s).

Operation is subject to the following two conditions:

- (1) This device may not cause interference.
- (2) This device must accept any interference, including interference that may cause undesired operation of the device.

L'émetteur/récepteur exempt de licence contenu dans le présent appareil est conforme aux CNR d'Innovation, Sciences et Développement économique Canada applicables aux appareils radio exempts de licence.

L'exploitation est autorisée aux deux conditions suivantes :

- (1) L'appareil ne doit pas produire de brouillage;
- (2) L'appareil doit accepter tout brouillage radioélectrique subi, même si le brouillage est susceptible d'en compromettre le fonctionnement.