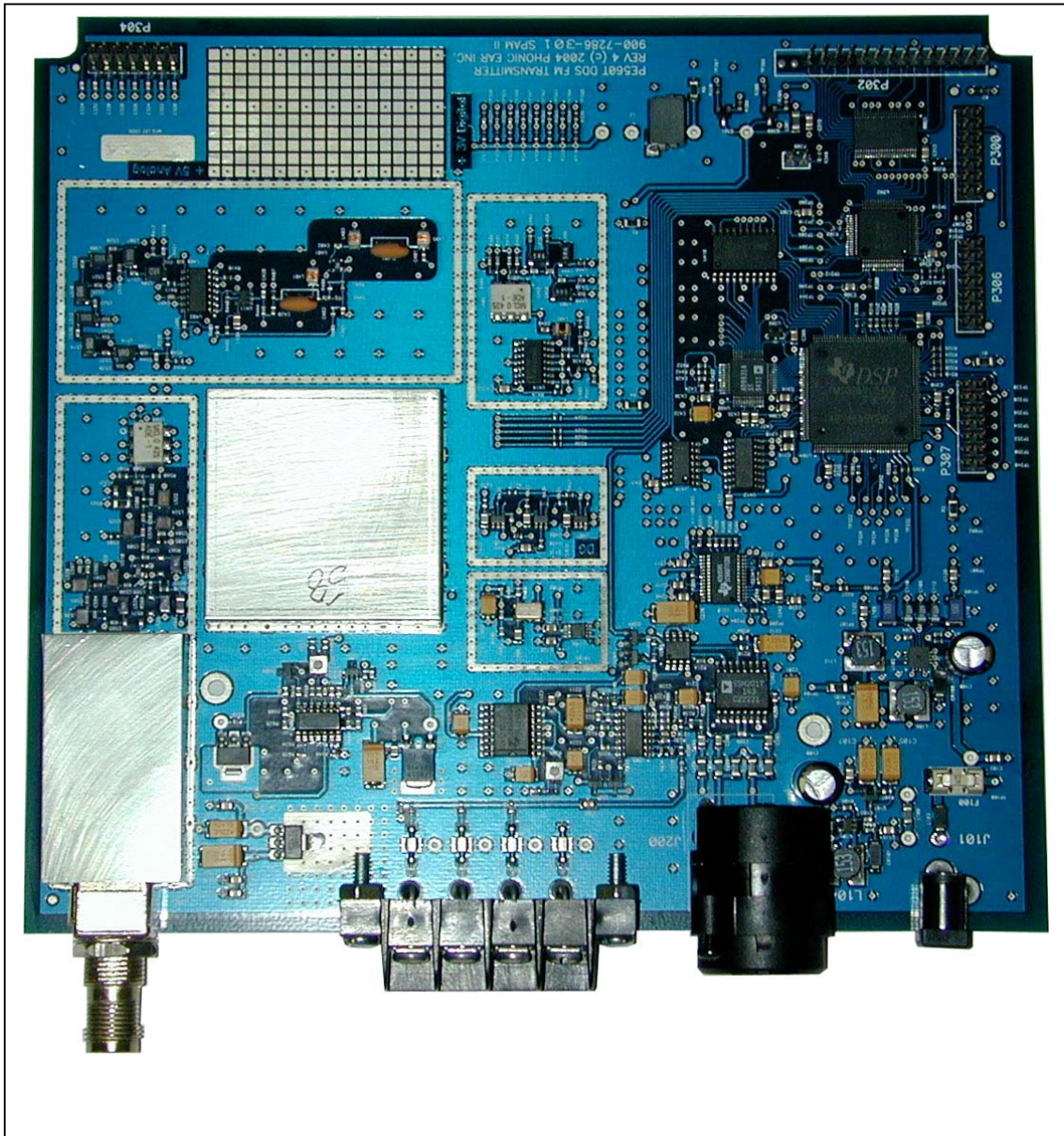
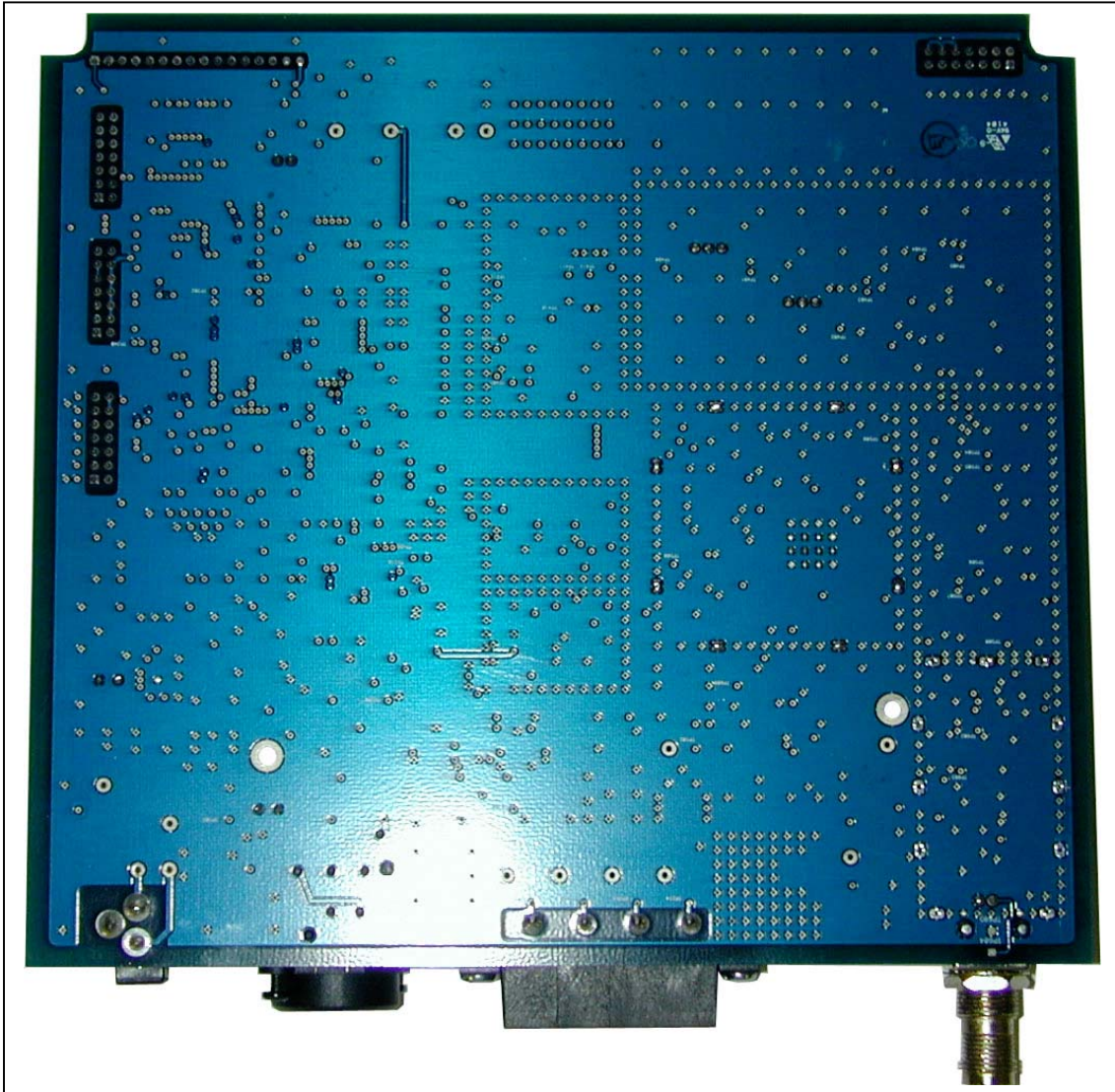


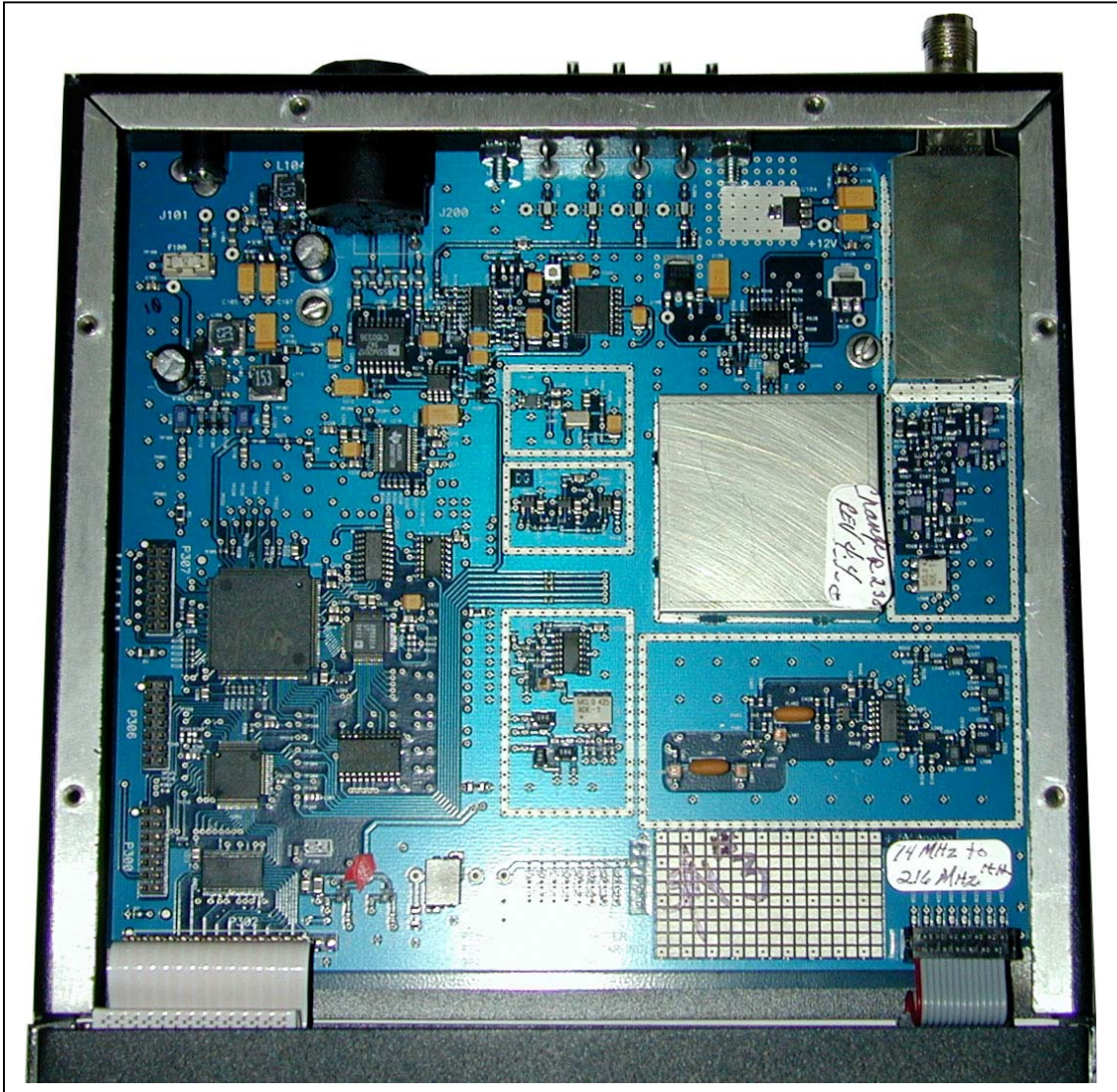
TOP VIEW OF PCB



BOTTOM VIEW OF PCB

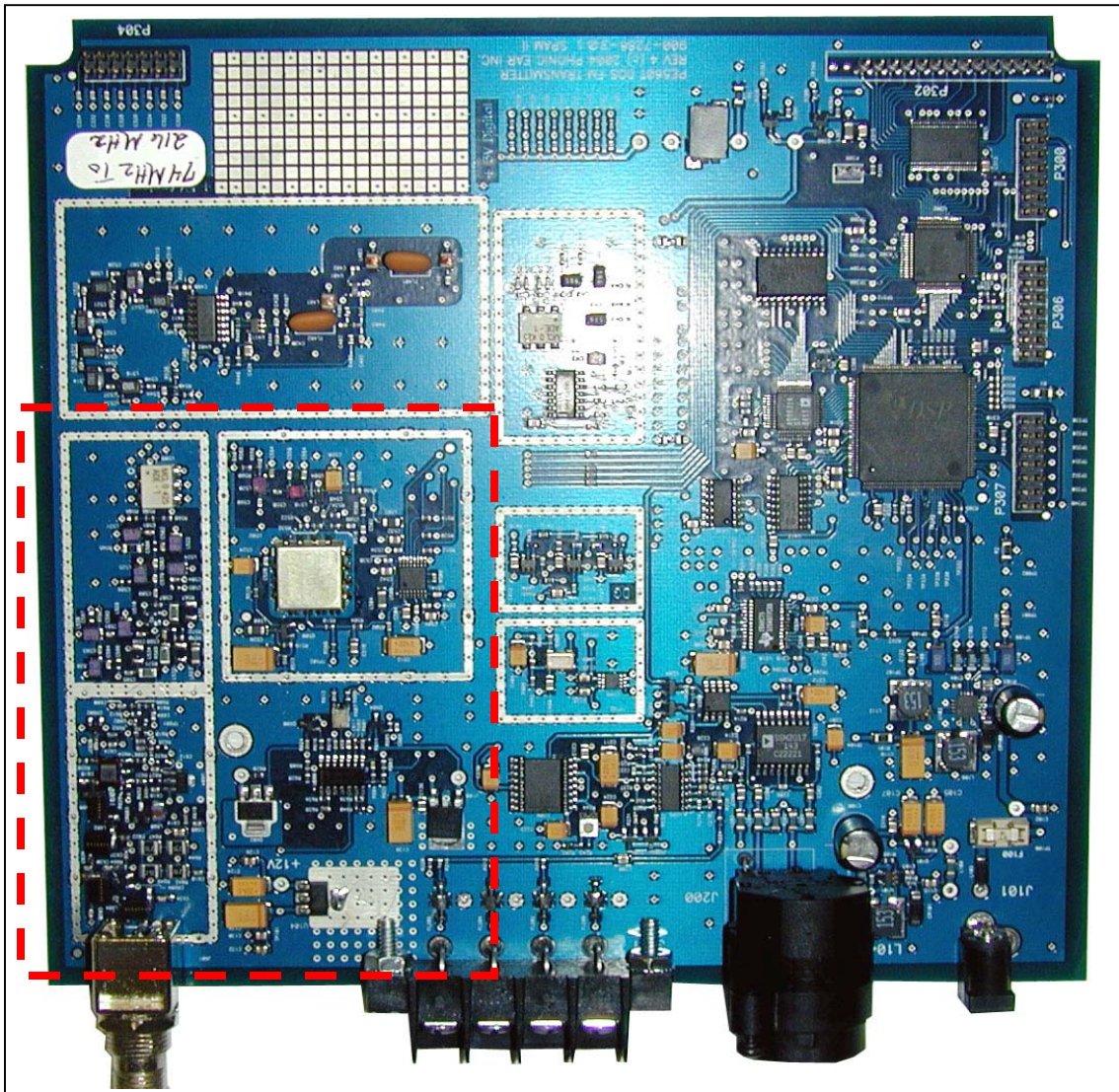








## PCB WITH OUT SHIELDS





The image displays four photographs of the internal components of a mobile phone, arranged in a 2x2 grid. The top-left photo shows the main circuit board (PCB) with various electronic components, including a large silver heat sink, capacitors, and integrated circuits. The top-right photo shows the battery, which is a large, rectangular, silver-colored component. The bottom-left photo shows the main circuit board with a large silver heat sink and various electronic components. The bottom-right photo shows the main circuit board with a large silver heat sink and various electronic components.

