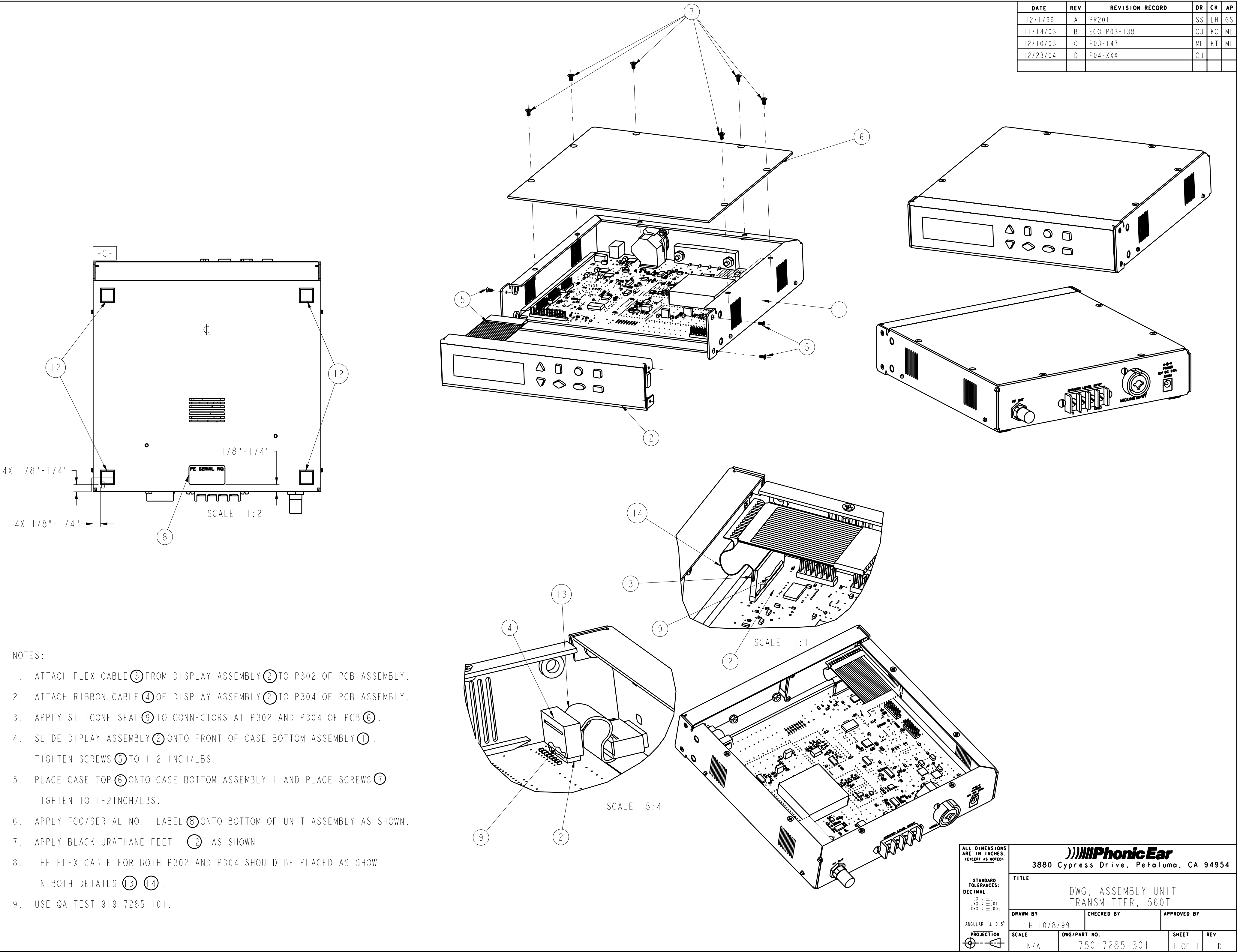


DATE	REV	REVISION RECORD	DR	CK	AP
12/1/99	A	PR201	SS	LH	GS
11/14/03	B	ECO P03-138	CJ	KC	ML
12/10/03	C	P03-147	ML	KT	ML
12/23/04	D	P04-XXX	CJ		



NOTES:

1. ATTACH FLEX CABLE (3) FROM DISPLAY ASSEMBLY (2) TO P302 OF PCB ASSEMBLY.
2. ATTACH RIBBON CABLE (4) OF DISPLAY ASSEMBLY (2) TO P304 OF PCB ASSEMBLY.
3. APPLY SILICONE SEAL (9) TO CONNECTORS AT P302 AND P304 OF PCB (6).
4. SLIDE DIPLAY ASSEMBLY (2) ONTO FRONT OF CASE BOTTOM ASSEMBLY (1).
TIGHTEN SCREWS (5) TO 1-2 INCH/LBS.
5. PLACE CASE TOP (6) ONTO CASE BOTTOM ASSEMBLY 1 AND PLACE SCREWS (7)
TIGHTEN TO 1-2INCH/LBS.
6. APPLY FCC/SERIAL NO. LABEL (8) ONTO BOTTOM OF UNIT ASSEMBLY AS SHOWN.
7. APPLY BLACK URATHANE FEET (12) AS SHOWN.
8. THE FLEX CABLE FOR BOTH P302 AND P304 SHOULD BE PLACED AS SHOW
IN BOTH DETAILS (3) (4).
9. USE QA TEST 919-7285-101.

ALL DIMENSIONS ARE IN INCHES. (EXCEPT AS NOTED)	Phonic Ear 3880 Cypress Drive, Petaluma, CA 94954	TITLE	
		DWG, ASSEMBLY UNIT TRANSMITTER, 560T	
STANDARD TOLERANCES: DECIMAL .X : ±.1 .XX : ±.01 .XXX : ±.005	DRAWN BY LH 10/8/99	CHECKED BY	
ANGULAR ± 0.5°	SCALE N/A	APPROVED BY	
PROJECTION N/A	DWG/PART NO. 750-7285-301	SHEET 1 OF 1	
		REV D	

DRAWING CONTAINS PROPRIETARY INFORMATION;
NOT TO BE USED UNLESS AUTHORIZED BY PHONIC EAR.