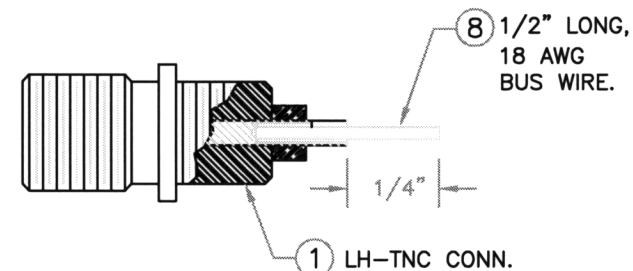
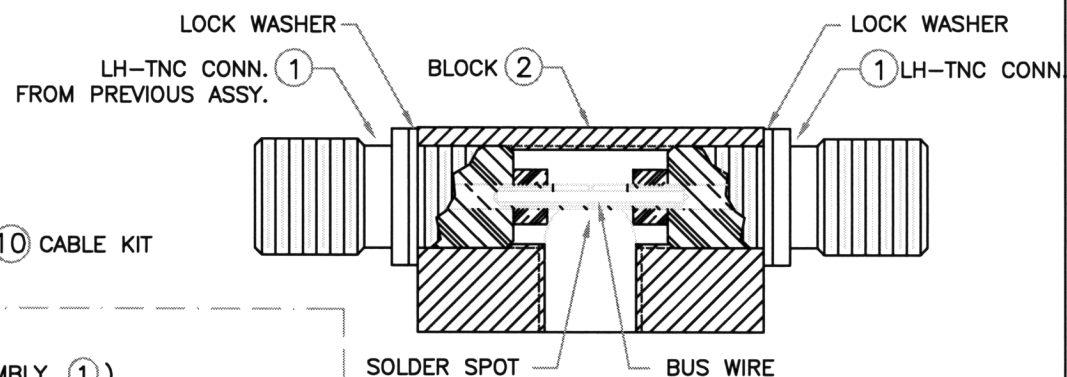


DATE	REV	REVISION RECORD	DR	CK	AP
8/25/99	A	INITIAL RELEASE	RD		



DETAIL A



DETAIL B

NOTES:

1. DISCARD FLAT WASHER AND HEX NUT (PARTS OF CONNECTOR ASSEMBLY ①).
2. INSERT ONE CONNECTOR AND LOCK WASHER INTO BLOCK. APPLY THREAD LOCKER LOCTITE ⑨ PRIOR TO ASSEMBLY.
3. INSERT BUSS WIRE ⑧ INTO OTHER CONNECTOR AS SHOWN IN DETAIL A. (DO NOT SOLDER PRIOR TO ASSEMBLY INTO BLOCK).
- ④ SCREW CONNECTOR W/LEAD AND LOCK WASHER INTO BLOCK ②. MAKE SURE LEAD INSERTS INTO OTHER CONNECTOR AS VIEWED THRU OPENING AT BOTTOM (SEE DETAIL B). USE THREAD LOCKER LOCTITE ⑨ ON THREADS.
5. SECURELY SOLDER CONNECTOR PINS TOGETHER THRU BOTTOM HOLE (SEE DETAIL B).
6. FASTEN BLOCK TO PLATE ③ WITH SCREW ④. CONNECTOR TO BE POINTING TO CENTER OF PLATE. TIGHTEN SCREW WITH WRENCH. DO NOT MARK PLATE. USE ASSEMBLY FIXTURE TO POSITION BLOCK ONTO GROUND PLATE.
7. REMOVE PAPER BACKING FROM FEET ⑤. ADHERE TO PLATE AS SHOWN (4 CORNERS).
8. PLACE ASSEMBLIES IN BAG ⑥ ⑩ WITH INSTRUCTIONS ⑦ FOLDED ON TOP OF PLATE. FOLD END OF BAG AND TAPE. (TITLE OF INSTRUCTIONS TO BE VISIBLE THRU BAG).

FILENAME: Z776M1A0

850-6302-904

TOLERANCES (EXCEPT AS NOTED)	Phonic Ear Inc. 3880 Cypress Drive, Petaluma, Ca. 94954		
	TITLE DWG ASSY, AT0776 LH-TNC ANTENNA GND PLANE W/ CABLE KIT		
	DRAWN RD 8/25/99	CHECKED	APPROVED
	SCALE N/A	DWG NO. 750-6302-104	REV A