

Body Back 0mm



Body Front 0mm



Edge 1(Top)



Edge 2(Right)





Edge 3(Bottom)


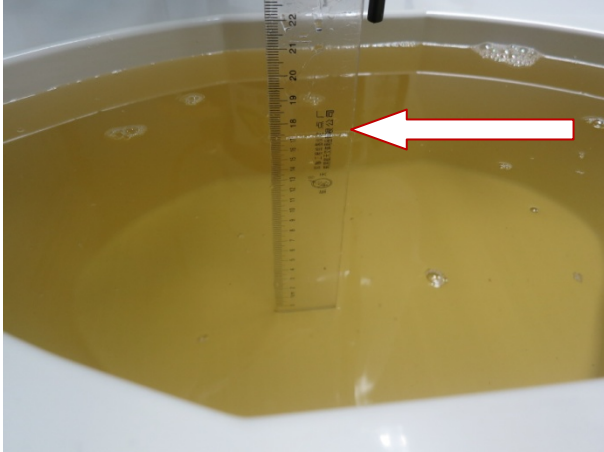




Edge 4(Left)



**DEPTH OF THE LIQUID IN THE PHANTOM—ZOOM IN**

Note: The position used in the measurement were according to IEEE 1528-2003

<p>850MHz head</p>  A photograph showing a ruler placed vertically in a white container filled with yellow liquid. A red arrow points to the liquid level on the ruler, which is approximately at the 16.5 cm mark.	<p>850MHz body</p>  A photograph showing a ruler placed vertically in a white container filled with yellow liquid. A red arrow points to the liquid level on the ruler, which is approximately at the 19.5 cm mark.
<p>1900MHz head</p>  A photograph showing a ruler placed vertically in a white container filled with light blue liquid. A red arrow points to the liquid level on the ruler, which is approximately at the 16.5 cm mark.	<p>1900MHz body</p>  A photograph showing a ruler placed vertically in a white container filled with yellow liquid. A red arrow points to the liquid level on the ruler, which is approximately at the 19.5 cm mark.



## EUT PHOTOGRAPHS

All VIEW OF EUT



TOP VIEW OF EUT





BOTTOM VIEW OF EUT



FRONT VIEW OF EUT





BACK VIEW OF EUT



LEFT VIEW OF EUT

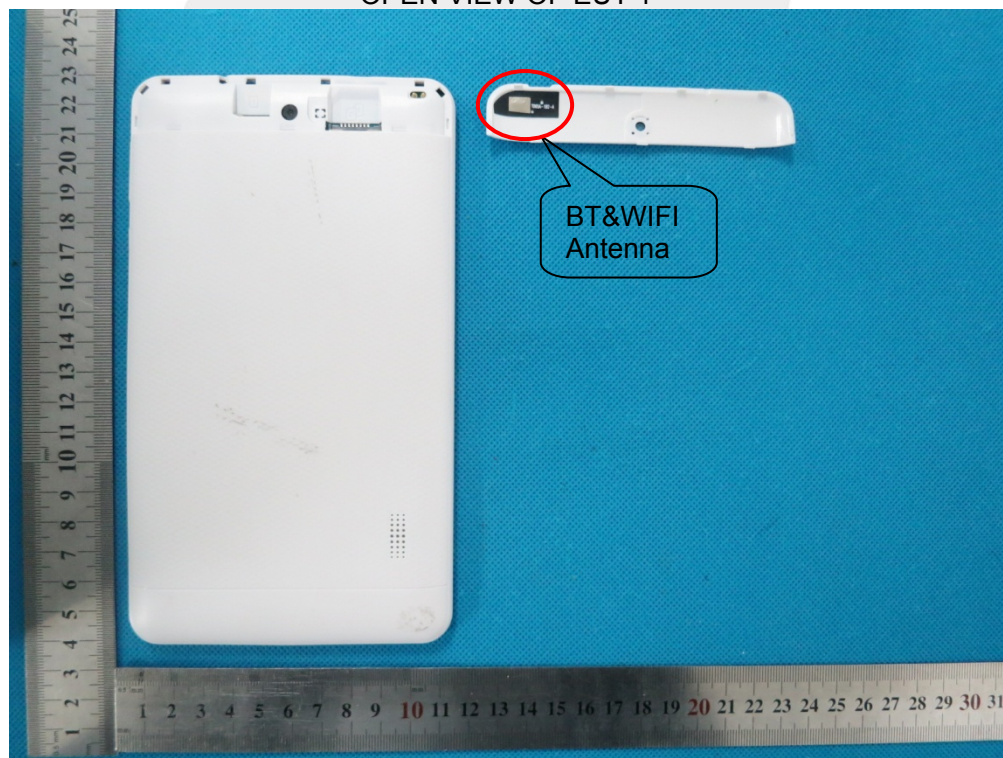




RIGHT VIEW OF EUT



OPEN VIEW OF EUT-1

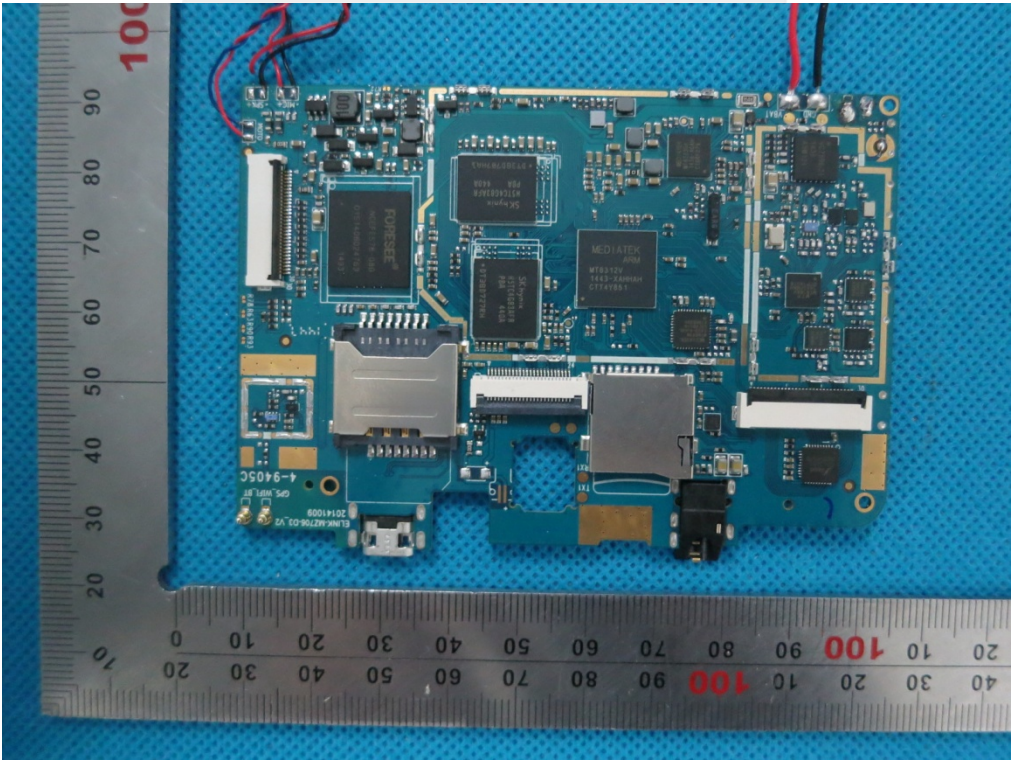




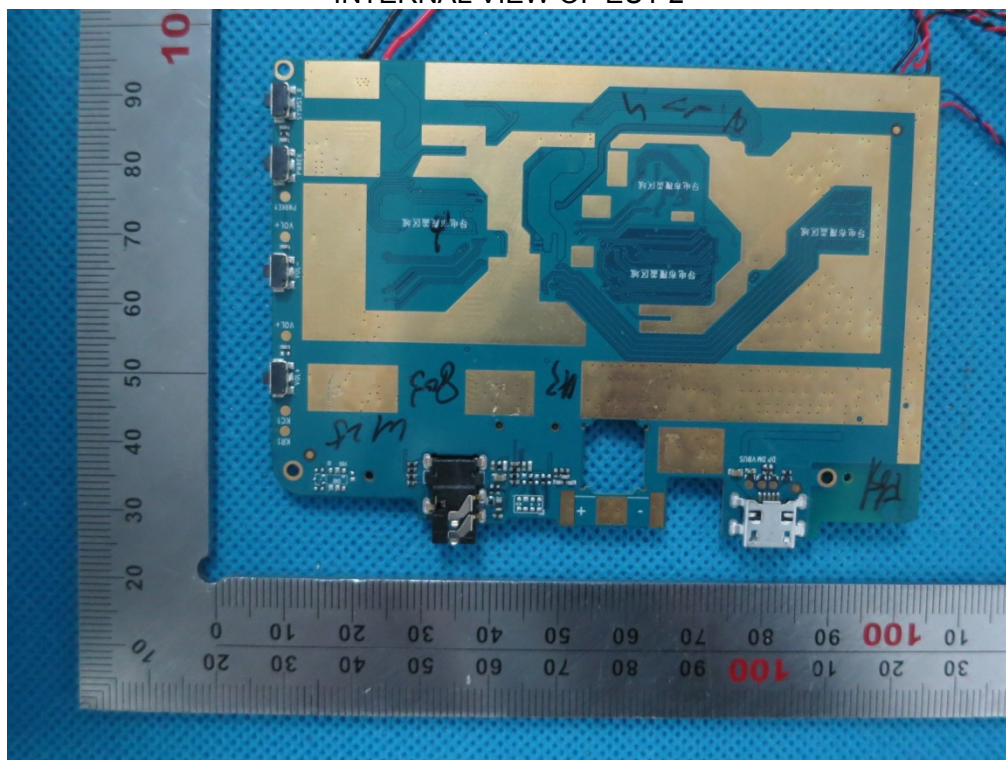
OPEN VIEW OF EUT-2



INTERNAL VIEW OF EUT-1



INTERNAL VIEW OF EUT-2





## APPENDIX D. PROBE CALIBRATION DATA AND DIPOLE CALIBRATION DATA

Refer the appendix Calibration Report.

