



- Introduction

- Install your USB module (Mechanical)

- Install USB software

- Hub (Windows 95 / Windows 98)
- USB monitor control (Windows 95)
- USB monitor control (Windows 98)

- Operating



INTRODUCTION

USB, called Universal Serial Bus, is a solution to complicated connectors and ports. It is implemented to ADI's new designed USB hub and is applicable to ADI's MicroScan Professional series and LCD monitors. USB hubs enable users to connect multiple devices and contain one upstream port and four downstream ports. The following information provides basic features and correct installation for further understanding.

Features

- USB replaces all the different kinds of serial and parallel port connectors with one standardized plug and port combination.
- No-hassle way to connect a new digital joystick, a scanner, a set of digital speakers, a digital camera or a PC telephone to the PC



system.

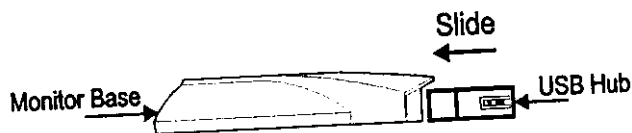
- With USB hub, users do not need to shut down and restart PC to attach or remove a peripheral. The PC automatically detect the peripheral and configures the necessary software.
- USB hubs, also USB peripherals, allow users to put multiple devices together with additional ports and distribute electrical power to devices.
- It is compatible with Windows 95 OSR 2.1 and Windows 98.
- For stand-alone and LCD monitor types, the one upstream port connects to your PC while the four down stream ports connect mainly to keyboard, mouse, or other devices such as a scanner, a joystick, speakers, or a PC phone.
- For add-on type, the control cable connects USB hub to your CRT/LCD monitor.



Install Your USB Hub

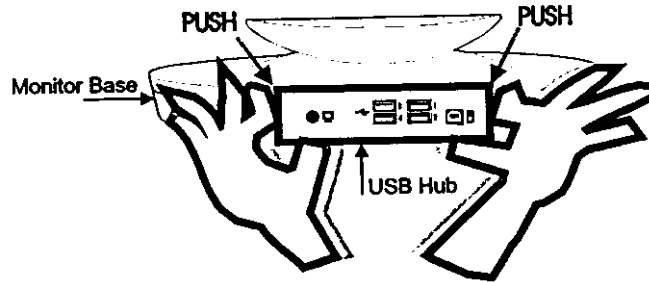
Insert the USB Hub Into the Monitor Base

Slide the USB hub horizontally into the monitor base.





To remove your USB hub, push down the slot located at right and left sides of the box. Then pull the box out.



Caution: Do not turn on the power before the USB hub is installed.

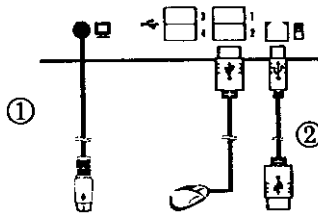


Connection setting

For CRT monitors (UH-200C)

After unpacking, there are two disks, one PC cable and this user's manual along with the USB hub.

Connect ①, monitor cable, upstream to your ADI monitor and ②, PC cable, to your PC. Connect USB mouse, USB keyboard, or joystick, etc. to the downstream ports.

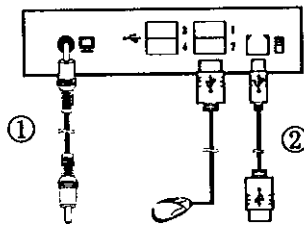




For LCD monitors (UH-200L)

The hub is only compatible to ADI's LCD monitors. Besides a PC cable and this user's manual, you will see a 5V DC power cord as well when you unpack the box. Your USB hub does not need an external power source but takes 5V from LCD power.

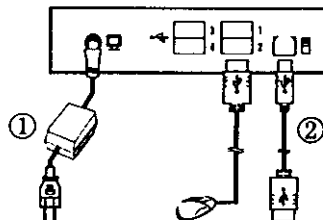
Connect ① the 5V power cord, upstream to the LCD monitor and ② the PC cable, to your PC.



For stand alone (UH-200S)

This type of ADI's USB hub also supports non ADI's monitors. Check that one PC cable, one adapter and this user's manual come with the purchase of this type of USB hub.

Connect ①, the adapter, one end to the hub and the other end to the power outlet. And connect ②, PC cable, to your PC.





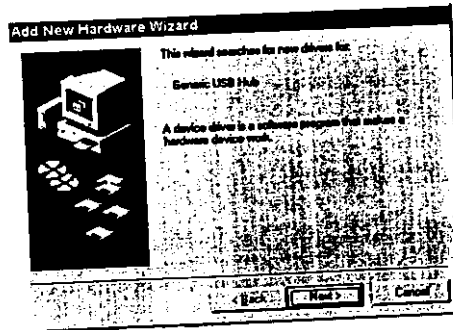
Install USB software

When the USB hub installation is finished, turn on your computer. The system will automatically detect the new device.

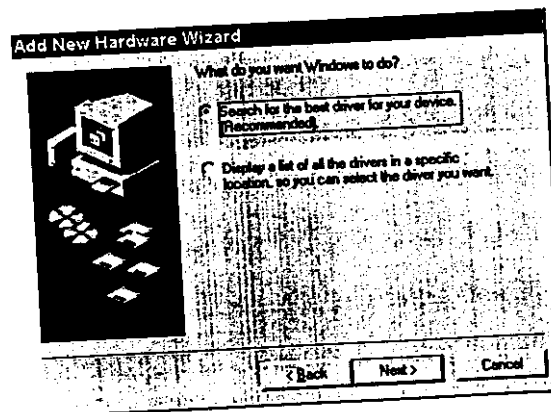
USB Hub Driver Installation

For both Win 95 / Win 98

Step 1 : Click Next > to start USB driver installation.

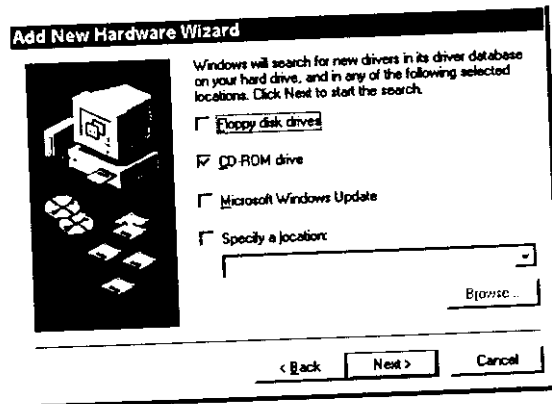


Step 2: Select "Search for the best driver for your device (Recommended)" and then click Next >.

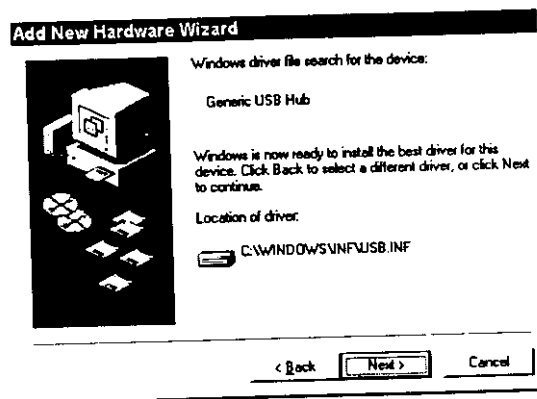




Step 3: Have your Win 95 or Win 98 CD-ROM ready to insert into CD-ROM driver. Tick on Win 95/Win 98 CD-ROM drive and then click **Next >**.

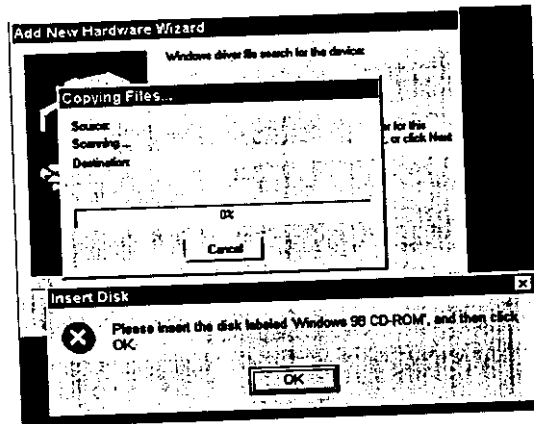


Step 4: When the Windows driver file search detects Generic USB Hub, click on **Next >**.

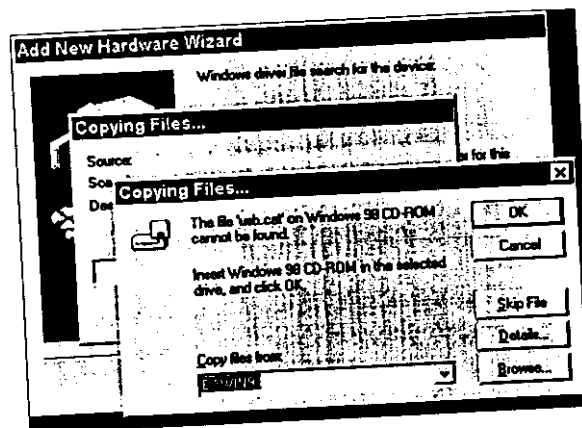




Step 5: Insert Windows 95 / Windows 98 CD-ROM into CD-ROM drive, and click **OK**.

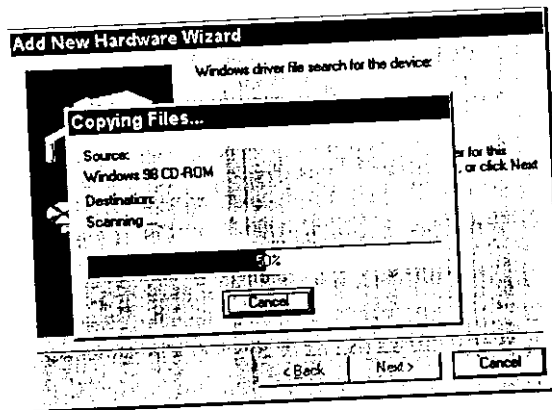


Step 6: Copy the file from where CD-ROM is. And then click **OK**.





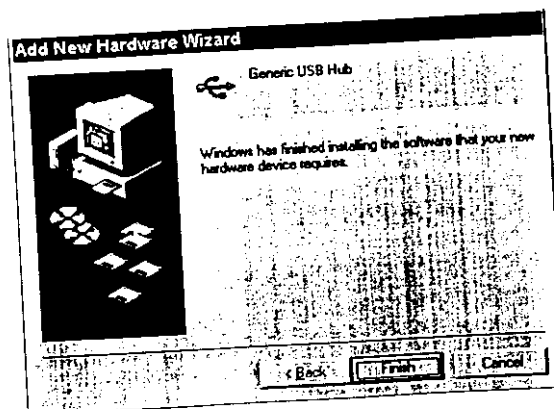
Step 7: Wait for the file copying is done. If **Cancel** is clicked any time during the copying, then it will stop installing USB hub.



15



Step 8: When the installation is done, you will see a confirmation message. Click **Finish** to complete USB hub installation.



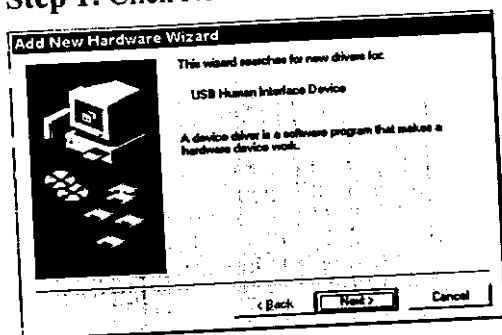


USB Monitor Interface and driver Installation (For UH-200C)

After USB hub installation is done, your PC will also detect USB for monitor.

Windows 95 environment

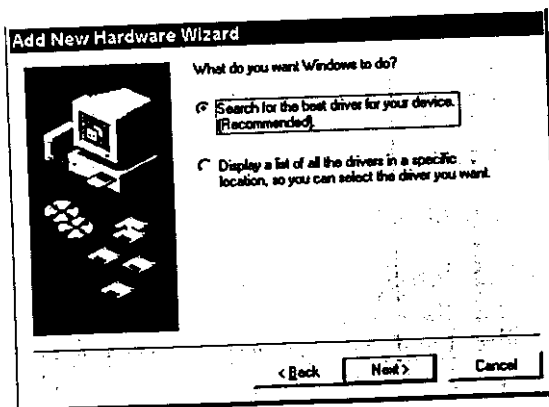
Step 1: Click Next > to continue.



17

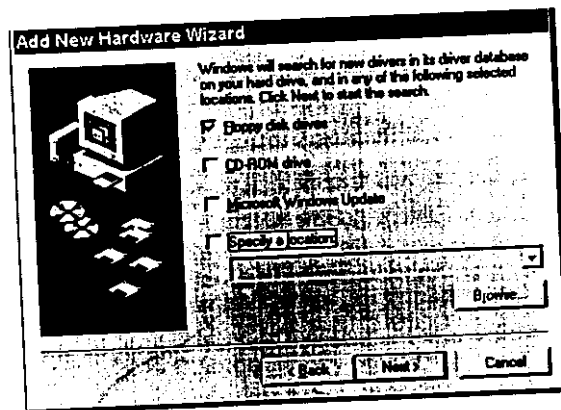


Step 2: Select "Search for the best driver for your device (Recommend)" and then click Next >.

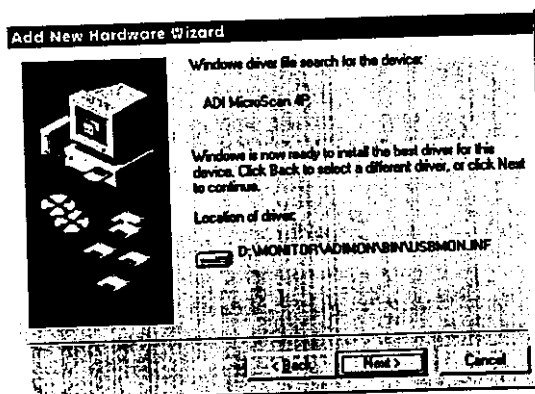




Step 3: Tick "Floppy disk drivers" and click Next >.

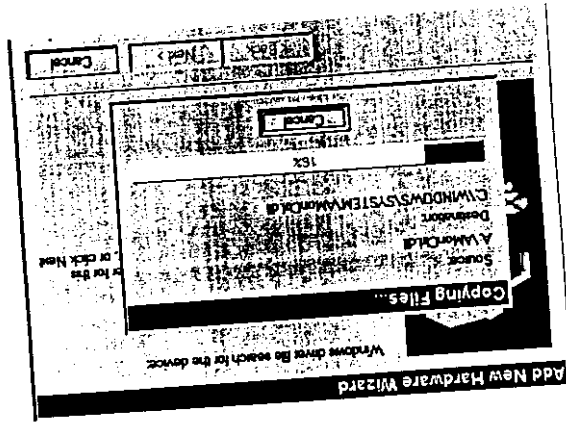


Step 4: When Windows driver file search detects ADI monitor, click Next >.





Step 6: When the installation is done, you will see a confirmation message. Click **Finish** to complete USB driver and monitor interface installation.

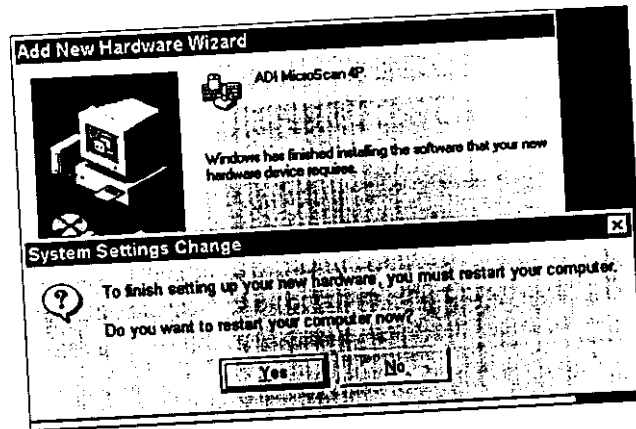


Step 5: Wait for the file copying done. If **Cancel** is clicked any time during the copying, then it will stop installing USB monitor control driver.





Step 7: You will be asked to restart your computer. Click **Yes** to restart your PC. If you click on **No**, monitor control function will not work until you restart the system.

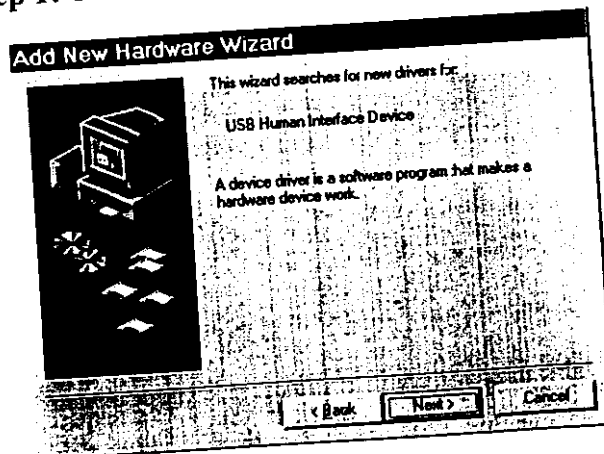


Windows 98 environment

Insert Windows 98 CD-ROM into your CD-ROM drive.

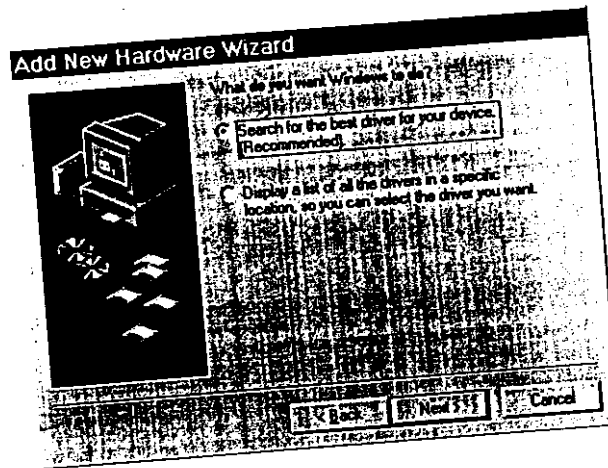
For monitor driver installation

Step 1: Click **Next >** to continue.

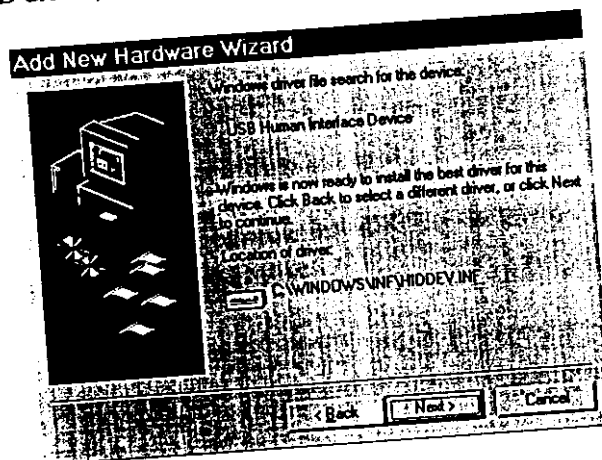




Step 2: Select "Search for the best driver for your device (Recommend)" and then click Next >.

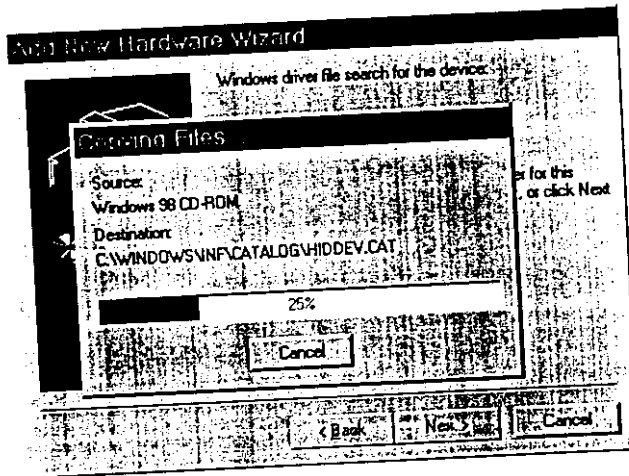


Step 3: When Windows driver file search detects USB driver, click Next >.

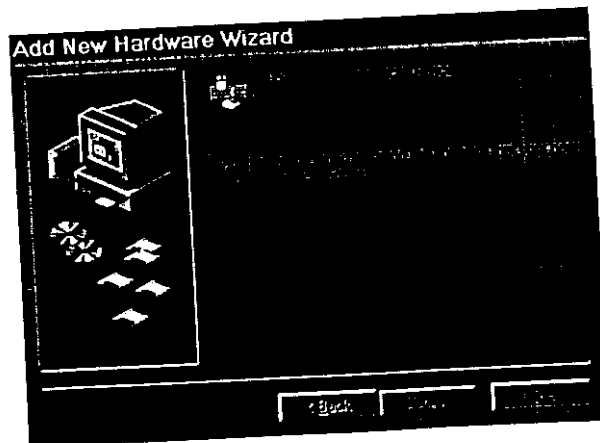




Step 4: Wait for the file copying done. If **Cancel** is clicked any time during the copying, then it will stop installing USB monitor control driver.



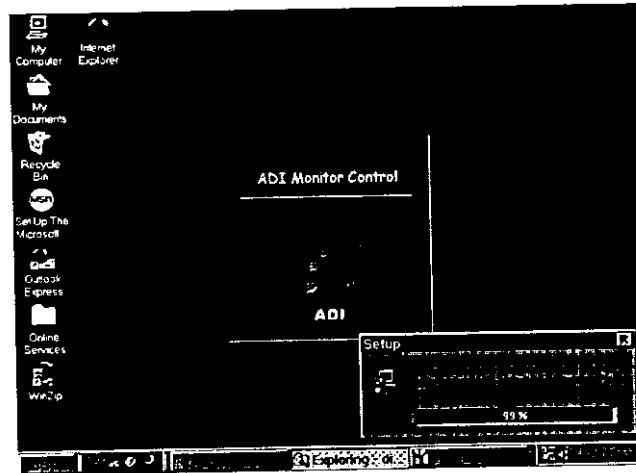
Step 5: When the installation is done, you will see a confirmation message. Click **Finish** to complete USB driver installation.



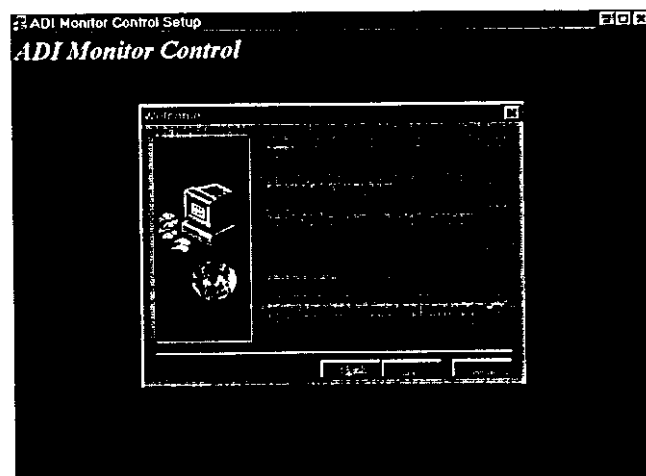


For USB monitor interface installation.

Step 1: Insert diskette (for Win 98) into floppy drive and run Setup.exe.

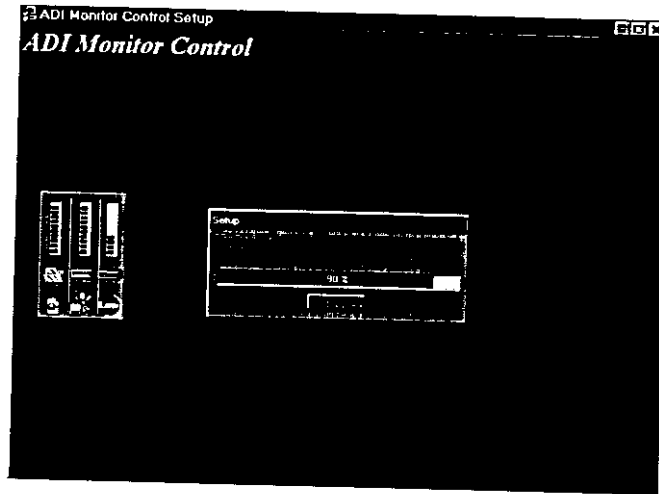


Step 2: Click Next > to continue.





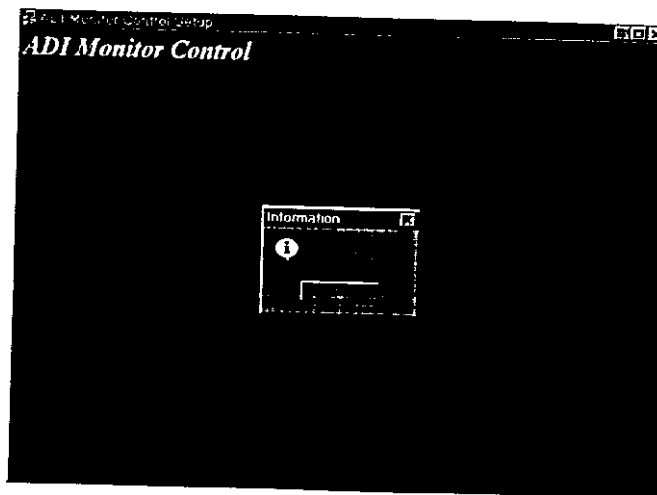
Step 3: Wait for the copying. If you hit **Back**, it will stop the setup.



31



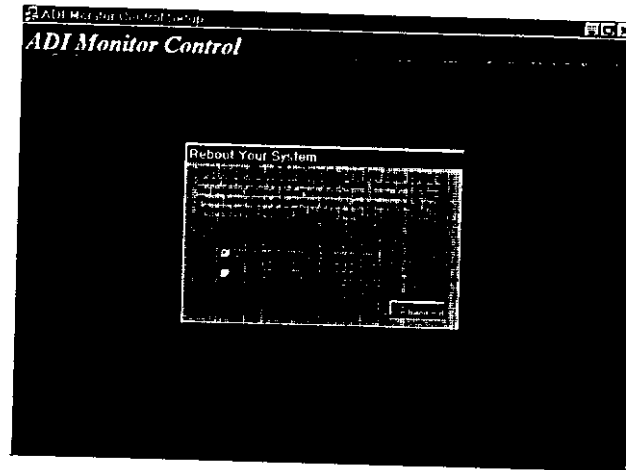
Step 4: If the setup is successful, you will see the message below. Click **OK** to complete.



32




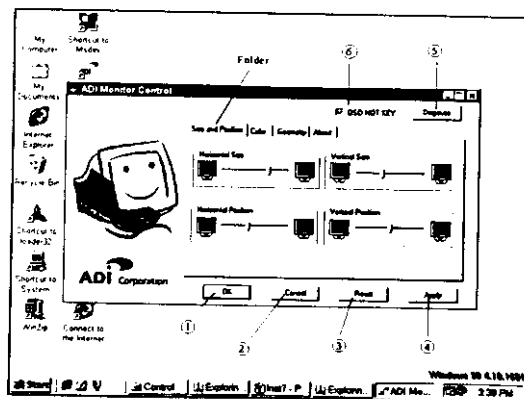
Step 5: Click **OK** to restart your PC. You have to restart the computer in order to initialize ADI USB monitor control. Otherwise, Windows will not activate ADI USB monitor control software until the next time your start Windows.



Operating Your Monitor with USB Hot Key.

ADI's Professional series and Graphic series adapt with USB monitor control.

Double click on icon  located at the System Menu Start bar on your monitor screen or press right button of your mouse and choose **Activate**






Monitor Control to display monitor control menu.

-
- | | | |
|---|----|--|
| ① | OK | Saves adjustments and quit the OSD menu. |
|---|----|--|
-
- | | | |
|---|--------|---|
| ② | Cancel | Cancels the setting and leave the OSD menu. |
|---|--------|---|
-
- | | | |
|---|-------|---|
| ③ | Reset | Resets the monitor controls to default or factory settings. |
|---|-------|---|
- Notes: Reset does not apply to Color controls.*
-
- | | | |
|---|-------|--|
| ④ | Apply | Saves adjustments and apply to the monitor screen. |
|---|-------|--|
-
- | | | |
|---|---------|---|
| ⑤ | Degauss | Demagnetizes the monitor and corrects color impurity caused by external magnetic field. |
|---|---------|---|
-



- | | | |
|---|-------------|--|
| ⑥ | OSD HOT KEY | If OSD HOT KEY is ticked and Function/Menu is pressed, software OSD will be present. Otherwise, monitor hardware OSD will showed up. |
|---|-------------|--|
-

Notes: You may click  located at the upper right-hand corner to close the OSD menu without any adjustment.



Inside Folder Layers

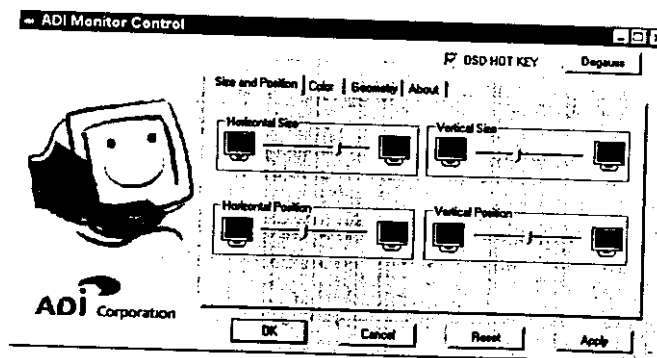
The parameters in the folder layers are similar to those in the monitor hardware OSD. You will find menu folders of Size and Position, Geometry, Color or Advance, depend on different models.

Size and Position

The menu folder of Size and Position includes parameters of Horizontal Size, Horizontal Position, Vertical Size and Vertical Position.



Click on any one of the parameters, and use left/right arrow keys on your keyboard to adjust. You may also drag the cursor of a parameter toward left/right for adjustment. Or you may click on the icons to make the desired adjustment.



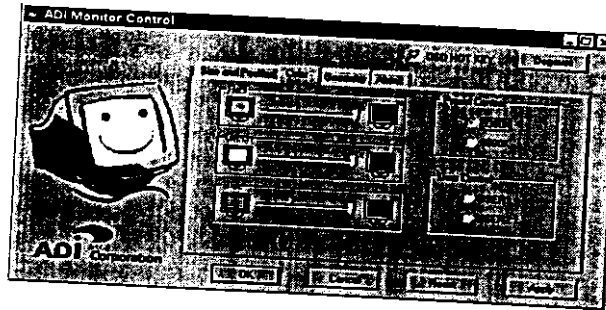
Color

The menu folder of Color is only available to



certain models.

Click on any one of the parameters, and use left/right arrow keys on your keyboard to adjust. You may also drag the cursor of a parameter toward left/right for adjustment.



Color menu has two options of Preset Control and User Control. You may choose color temperatures between 9300K and 6500K or 5500K within Preset

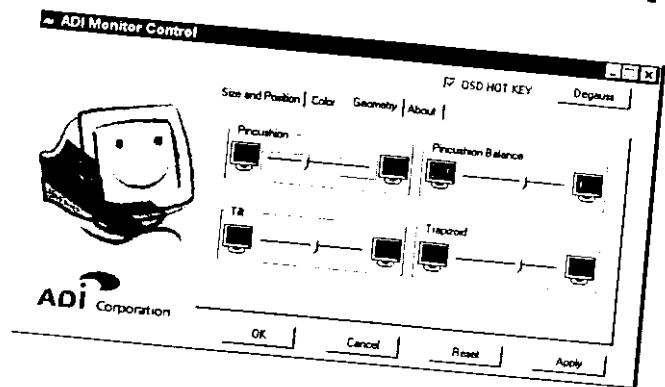


Control or create your own color preference saved as User 1/ User 2 or User 3.

Notes: You may not choose Preset Control and User Control at the same time. If any of the two preset controls is selected, you cannot adjust RGB by dragging the cursor. To adjust RGB columns, you should select User 1/User 2 or User 3.

Geometry

The menu folder of Geometry includes parameters of Pincushion, Trapezoid and Tilt or Moire.

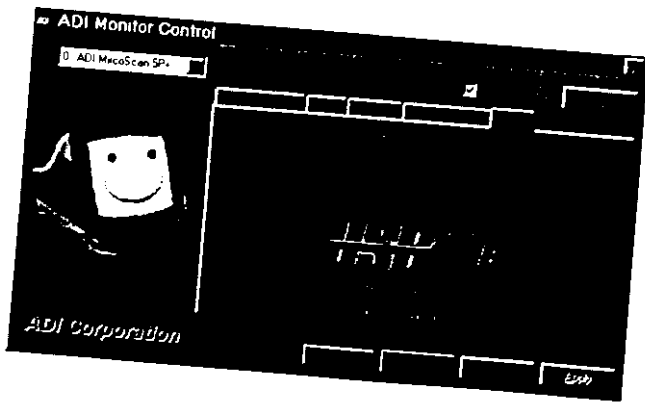


Click on any one of the parameters with your mouse, and use left/right arrow keys on your keyboard to adjust. You may also drag the cursor of a parameter toward left/right for adjustment.



About

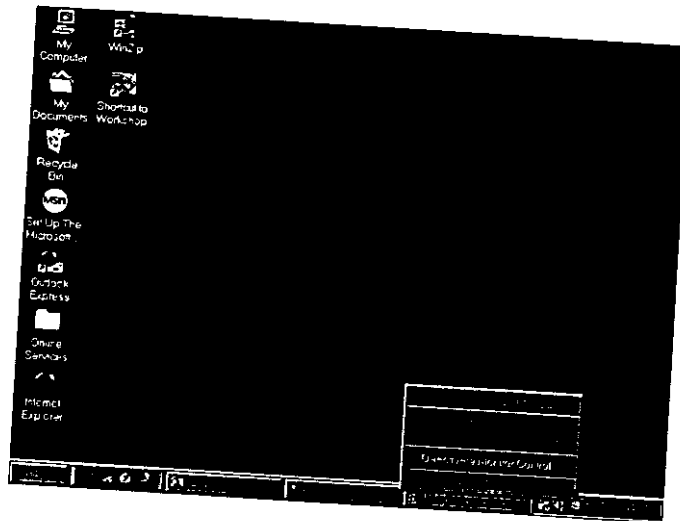
This is the statement of ADI monitor control.
If you find trouble with installation, please notify your local dealer or simply get on web for update information at www.adi.com.tw, ADI's website.





Other Function (For Windows 98 only)

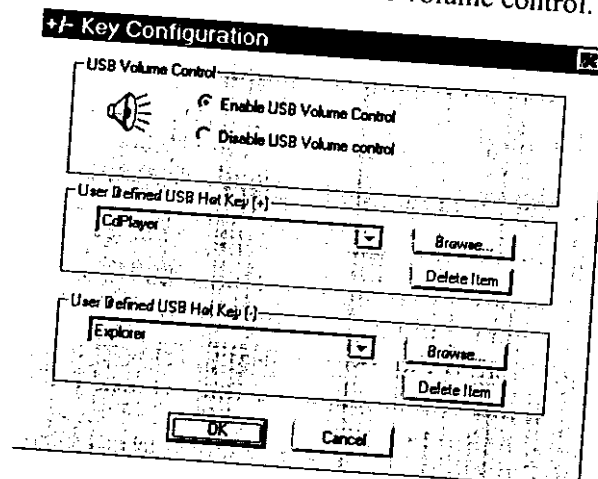
Press the right button of the mouse and select +/- Key Configuration.



43



Below is a +/- Key Configuration which you can use +/- keys to enable or disable volume control.



Disable Volume Control allows you to define an application for User Defined USB Hot Key +/- keys.



The default settings are Explore, Notepad, Calc (calculator), Pbrush (Paint brush) and Cdplayer (CD Player).

Specifications

Self Power Hub	<i>Yes</i>
Downstream Overcurrent Protection	<i>Yes</i>
Upstream Port	<i>1</i>
Downstream Port	<i>4</i>
Downstream Output Current	<i>500 mA (max)</i>



Ambient Temperature	<i>Operating : 0° C to 40° C Storage : -20° C to 65° C</i>
Humidity	<i>Operating : 20% to 95% Storage : 10% to 95%</i>
Dimension	<i>120mm * 89mm * 27.5mm</i>
Net Weight	<i>217 g</i>
Compliance with USB Hub Specification Version	<i>1.0</i>

NOTICE:
DUE TO OUR POLICY OF CONTINUOUS PRODUCT IMPROVEMENT, THE ABOVE SPECIFICATIONS ARE SUBJECT TO CHANGE WITHOUT NOTICE. ADI CORPORATION SHALL NOT BE LIABLE FOR TECHNICAL OR EDITORIAL ERRORS OR OMISSIONS CONTAINED HEREIN; NOR FOR INCIDENTAL OR CONSEQUENTIAL DAMAGES WHATSOEVER RESULTING FROM FURNISHING, PERFORMANCE OR USE OF THIS MATERIAL.