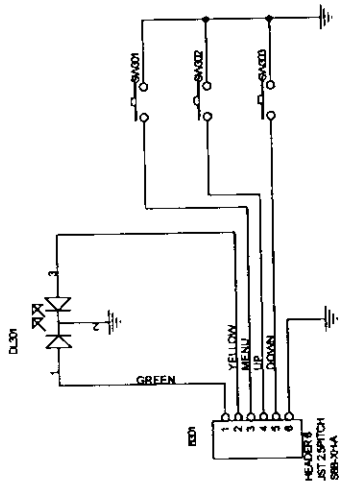
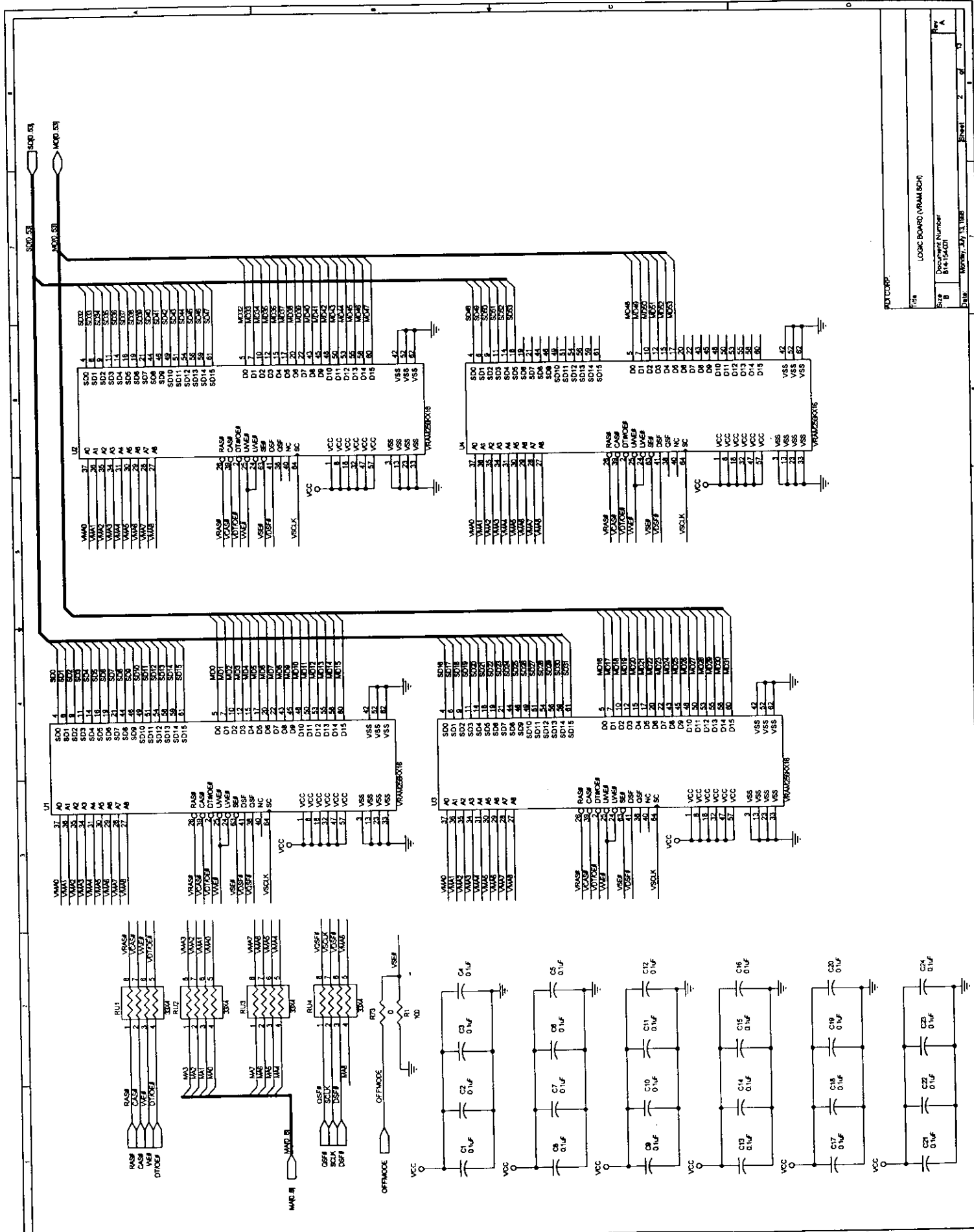


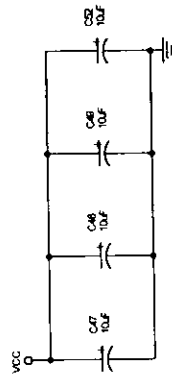
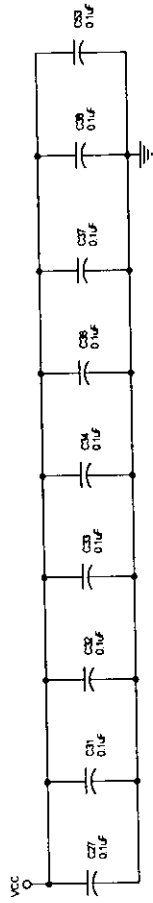
NOTE: CS19, CS20, FB523, FB524
CLOSE B503 AND B502

DRAWN		DATE	ADI CORP.
CHK		DATE	I/O BOARD (IN-OUT.SCH)
APVD		DATE	DOCUMENT NUMBER B14-163-003
		DATE	REV. 1
		DATE	REV. 2



DRWN	DATE	ADI CORP.	
CHK	DATE	OSD BOARD (OSD.SCH)	
APVD	DATE	Doc. No.	Rev.
		B 14-163-002	A
		Year	Printed
		1988	9





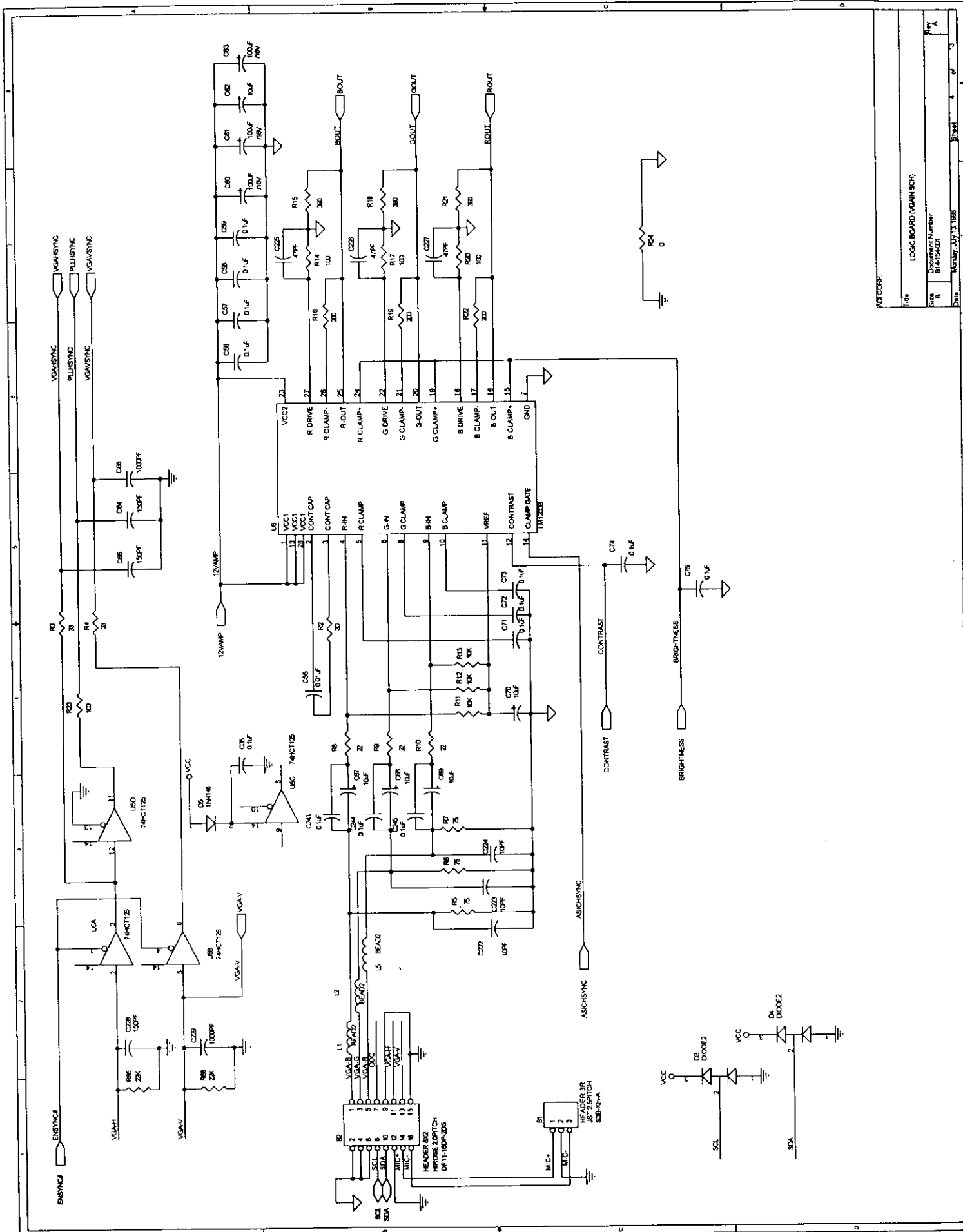
ROUTED:

Title: LOGIC BOARD (CAP SCH)

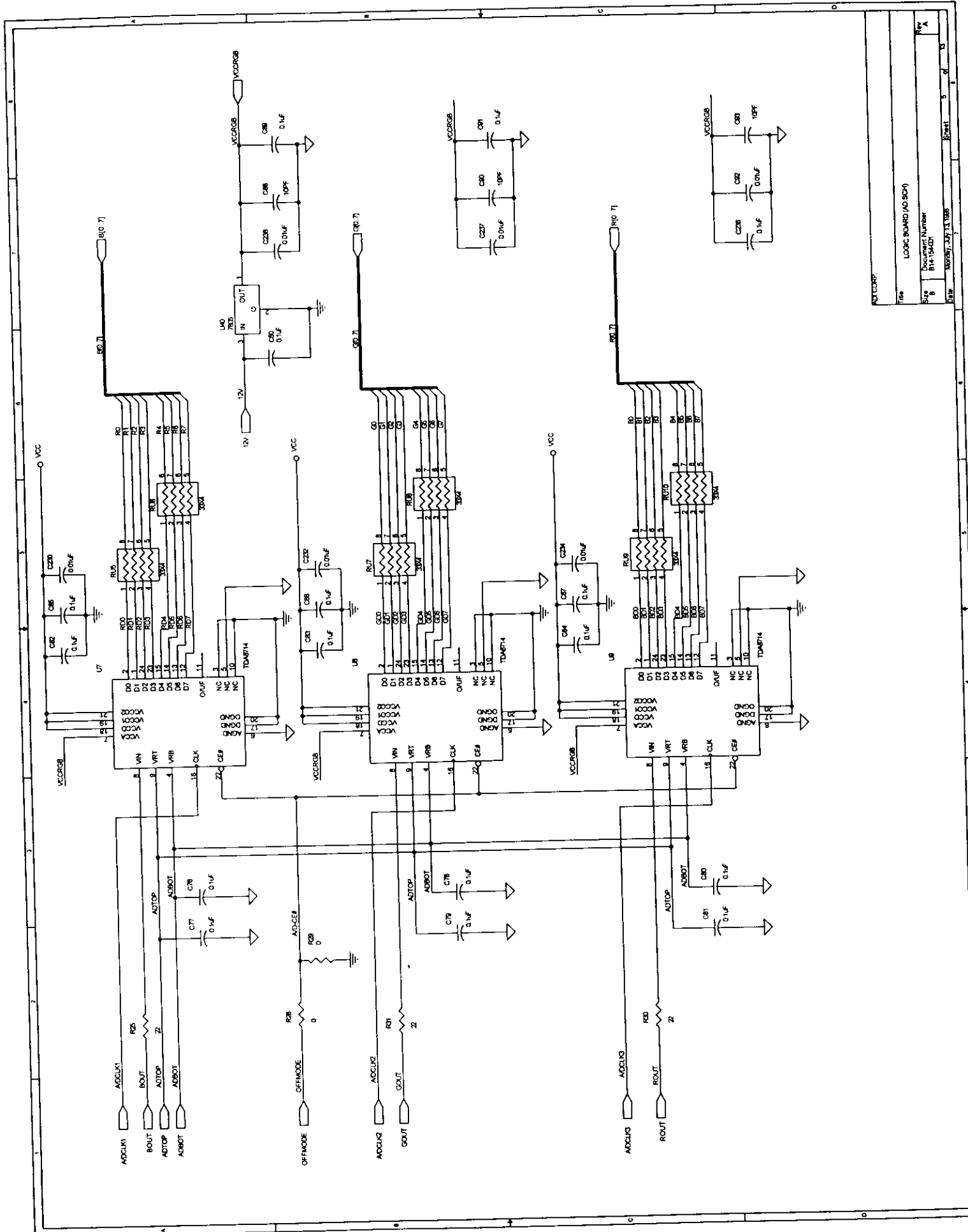
Size: B
Document Number: B14-15401

Date: 10/20/87 BY: TJS

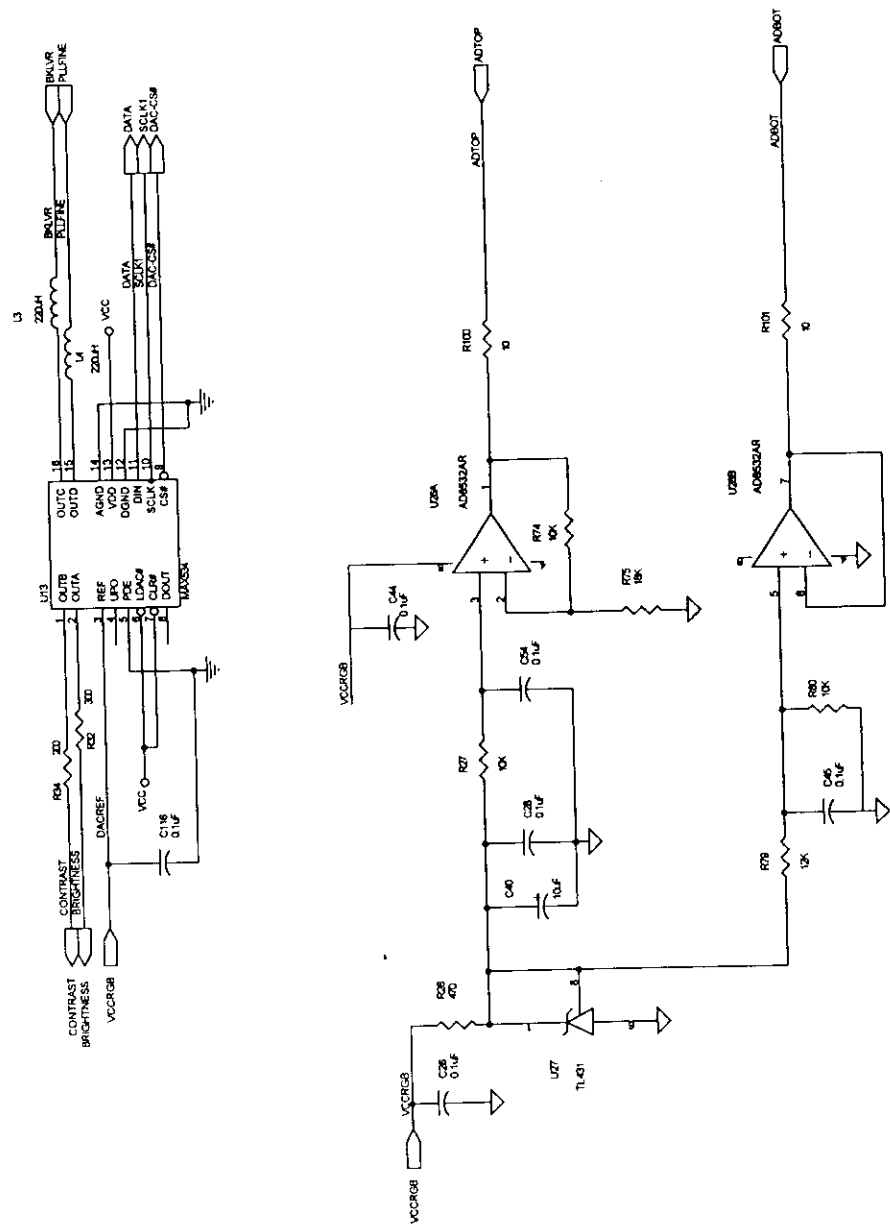
Sheet: 3 of 3 Rev: A



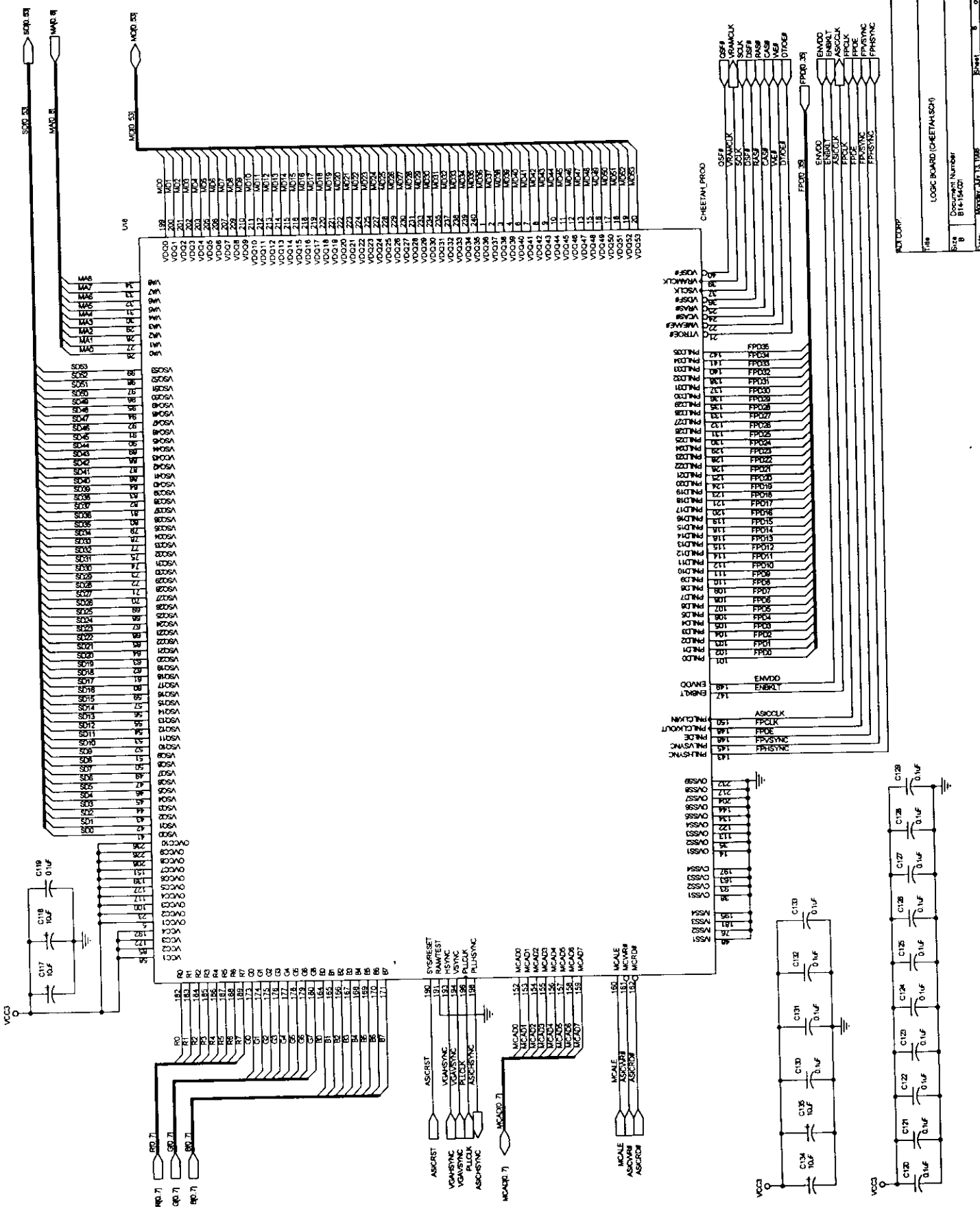
Title: LOGIC BOARD (VGA IN SCH)
 Size: B14-15A-D1
 Date: Monday, July 13, 1986
 Sheet: 1 of 13

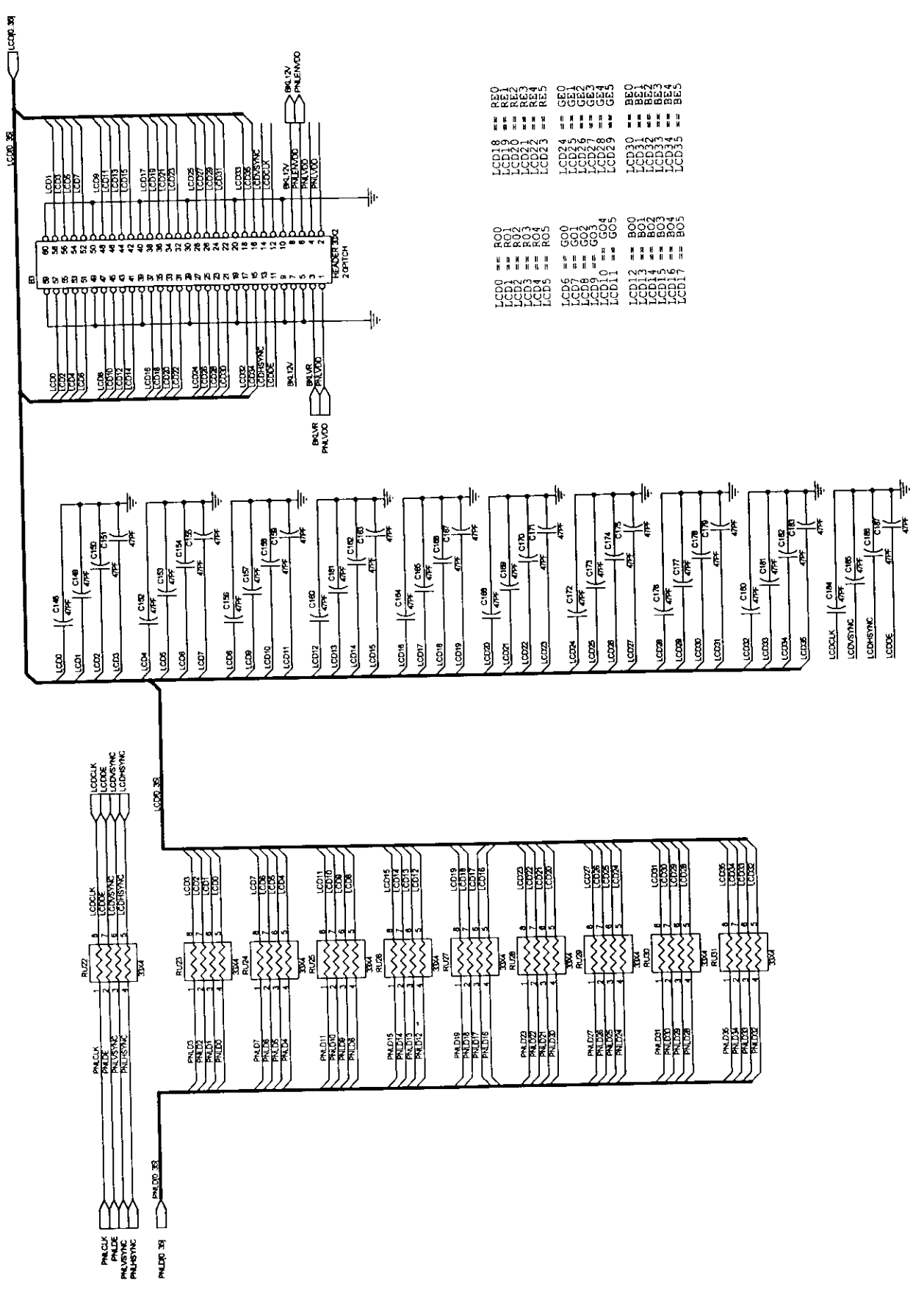


AO 80H
 Title: LOGIC BOARD (AO 80H)
 Sheet: 8 of 10
 Drawing Number: 11-15401
 Date: 11/11/88
 Rev: A

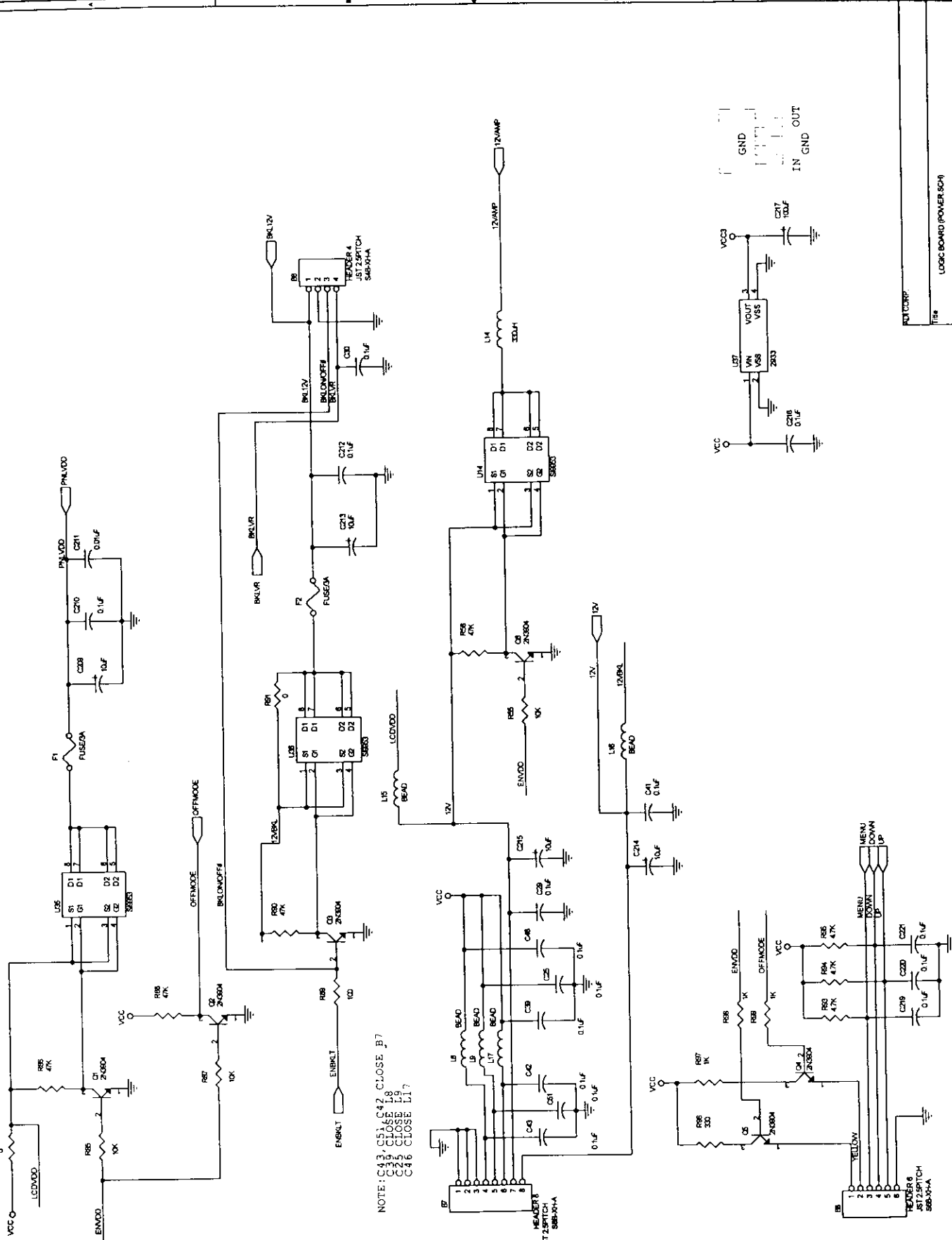


REV. 0001	
Title	LOGIC BOARD (VLSI)
Size	B
Doc. Number	B14-154-001
Date	March 1977
Sheet	1 of 1

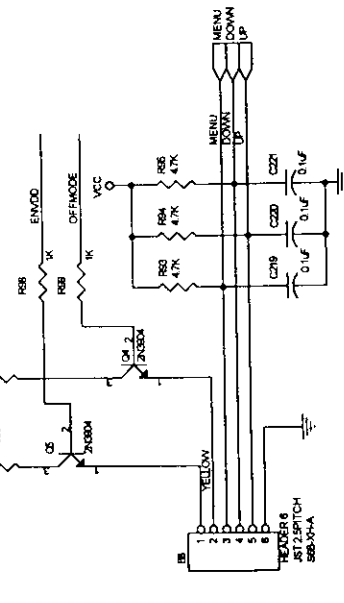
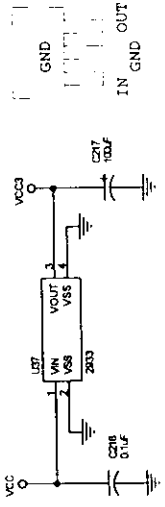




- LCD0 == R00
- LCD1 == R01
- LCD2 == R02
- LCD3 == R03
- LCD4 == R04
- LCD5 == R05
- LCD6 == G00
- LCD7 == G01
- LCD8 == G02
- LCD9 == G03
- LCD10 == G04
- LCD11 == G05
- LCD12 == B00
- LCD13 == B01
- LCD14 == B02
- LCD15 == B03
- LCD16 == B04
- LCD17 == B05
- LCD18 == BE0
- LCD19 == BE1
- LCD20 == BE2
- LCD21 == BE3
- LCD22 == BE4
- LCD23 == BE5
- LCD24 == G00
- LCD25 == G01
- LCD26 == G02
- LCD27 == G03
- LCD28 == G04
- LCD29 == G05
- LCD30 == B00
- LCD31 == B01
- LCD32 == B02
- LCD33 == B03
- LCD34 == B04
- LCD35 == BE5



NOTE: C43, C51, C42, C106, C18, C29, C105, C17, C28, C104, C11



NOTE: C219, C220, C221 CLOSE B0

REV	A
DATE	11 13 1985
DESIGNER	...
CHECKED	...
APPROVED	...
TITLE	LOGIC BOARD (POWER SO4)
SYMBOL NUMBER	814-16421
REV	A

