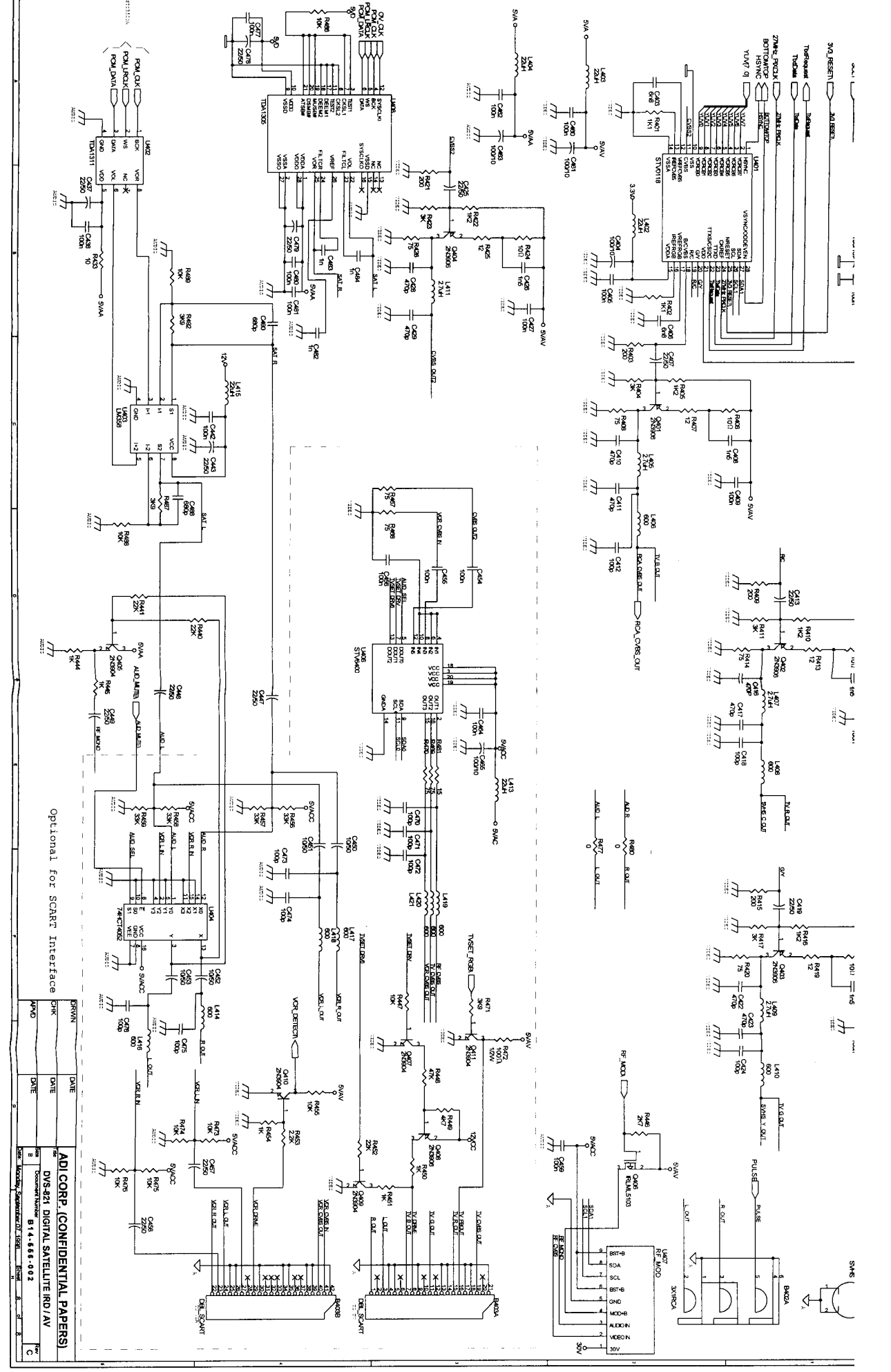


DRAWN	DATE
CHK	DATE
APP'D	DATE

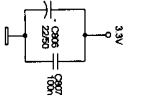
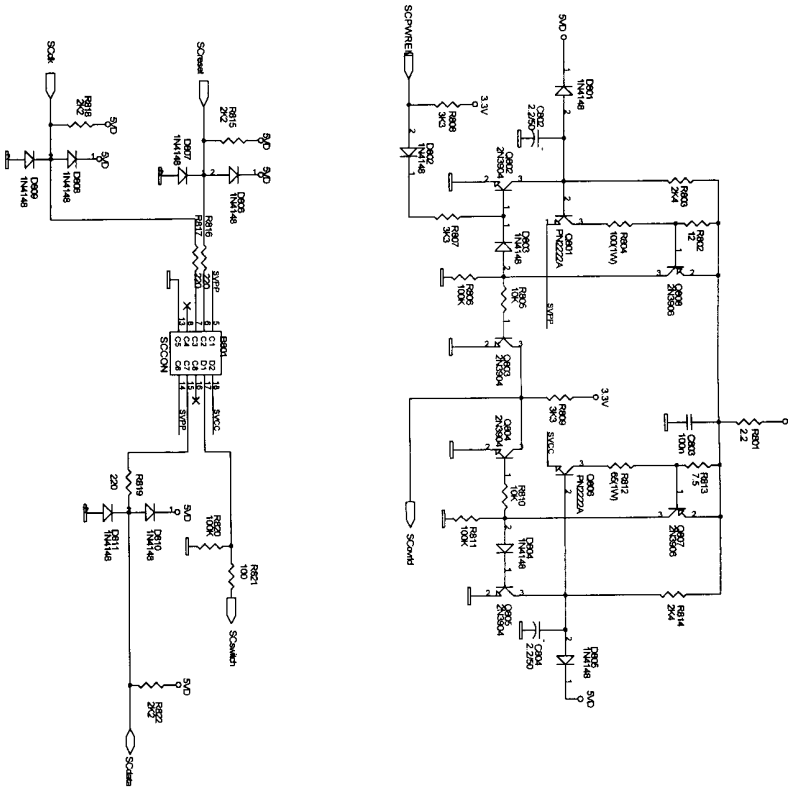
ADI CORP. (CONFIDENTIAL PAPERS)
 DVS-821 DIGITAL SATELLITE/RG/DRAM
 DOCUMENT NUMBER: B14-686-002
 DATE: 1984



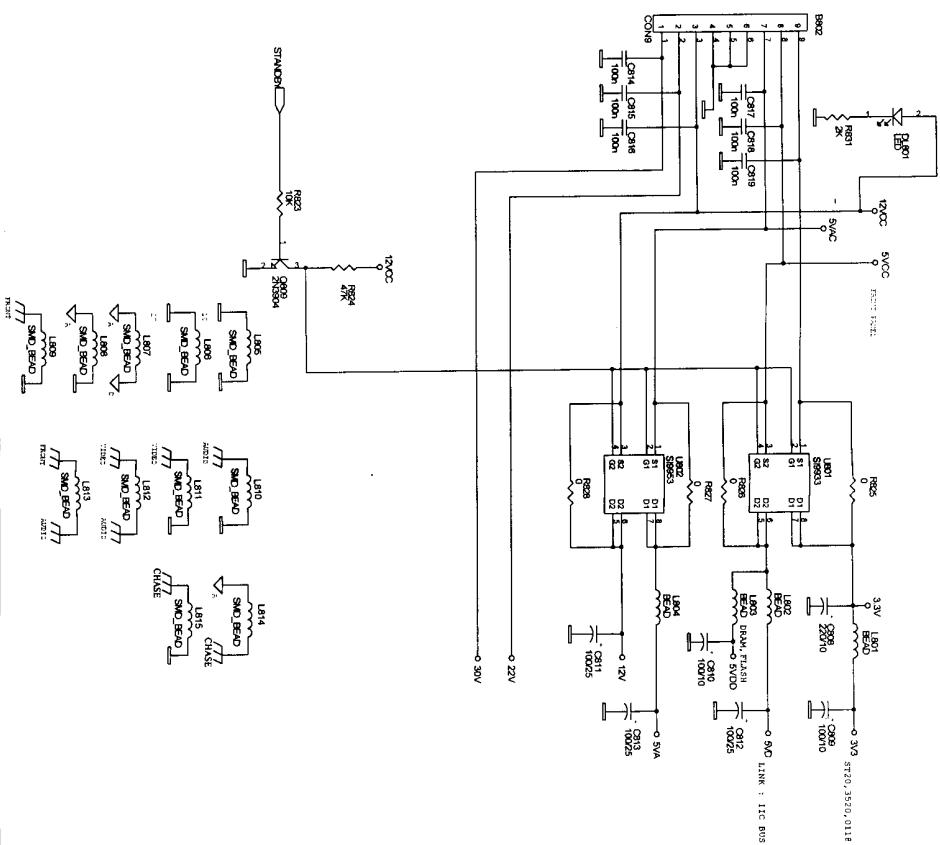
Optional for SCART Interface

REV	DATE	BY	CHK	DATE	BY
1					
2					
3					
4					
5					
6					
7					
8					
9					
10					

ADICORP. (CONFIDENTIAL PAPERS)
 DVS-824 DIGITAL SATELLITE RFD / V
 Document Number B14-888-002
 Rev. 10/88
 Copyright © 1988 ADICORP.

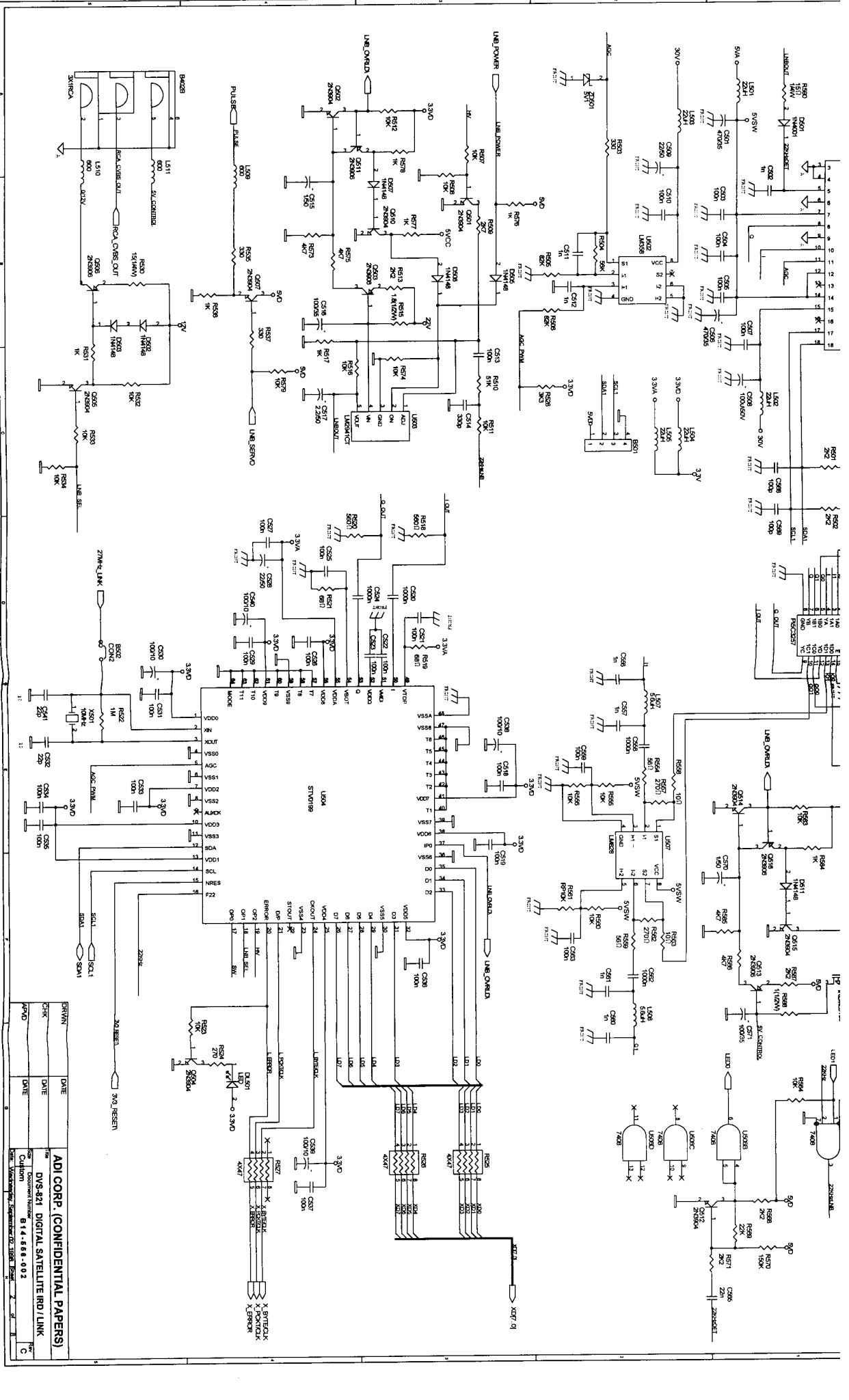


Optional Parts



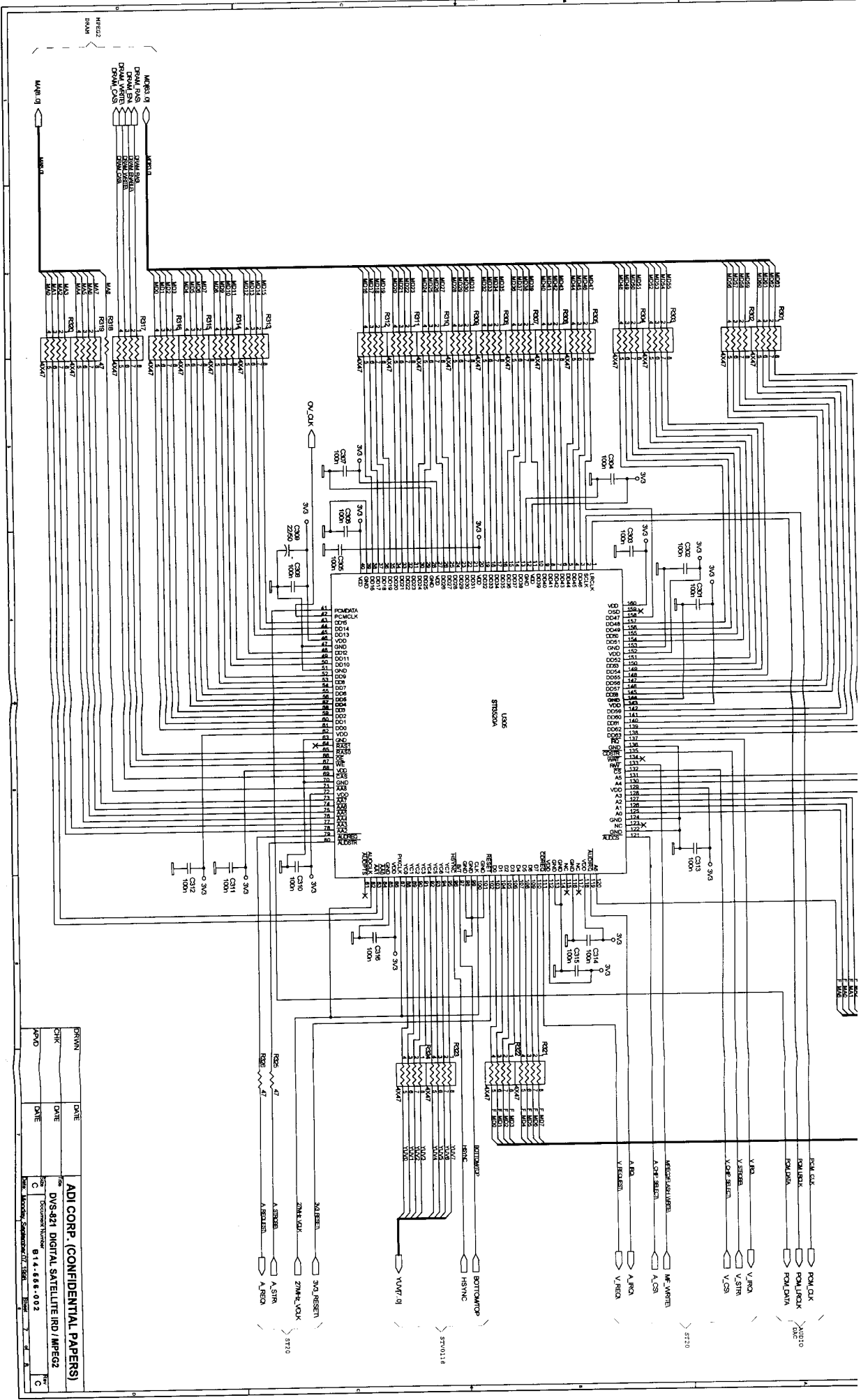
REV	DATE	DESCRIPTION
1		
2		
3		
4		
5		
6		
7		
8		
9		
10		
11		
12		
13		
14		
15		
16		
17		
18		
19		
20		
21		
22		
23		
24		
25		
26		
27		
28		
29		
30		
31		
32		
33		
34		
35		
36		
37		
38		
39		
40		
41		
42		
43		
44		
45		
46		
47		
48		
49		
50		
51		
52		
53		
54		
55		
56		
57		
58		
59		
60		
61		
62		
63		
64		
65		
66		
67		
68		
69		
70		
71		
72		
73		
74		
75		
76		
77		
78		
79		
80		
81		
82		
83		
84		
85		
86		
87		
88		
89		
90		
91		
92		
93		
94		
95		
96		
97		
98		
99		
100		

ADI CORP. (CONFIDENTIAL PAPERS)
 DVS-821 DIGITAL SATELLITE IRD / INTER
 Document Number: B14-668-002
 Rev: 1
 Date: 11/18/88
 Location: Sunnyvale, CA

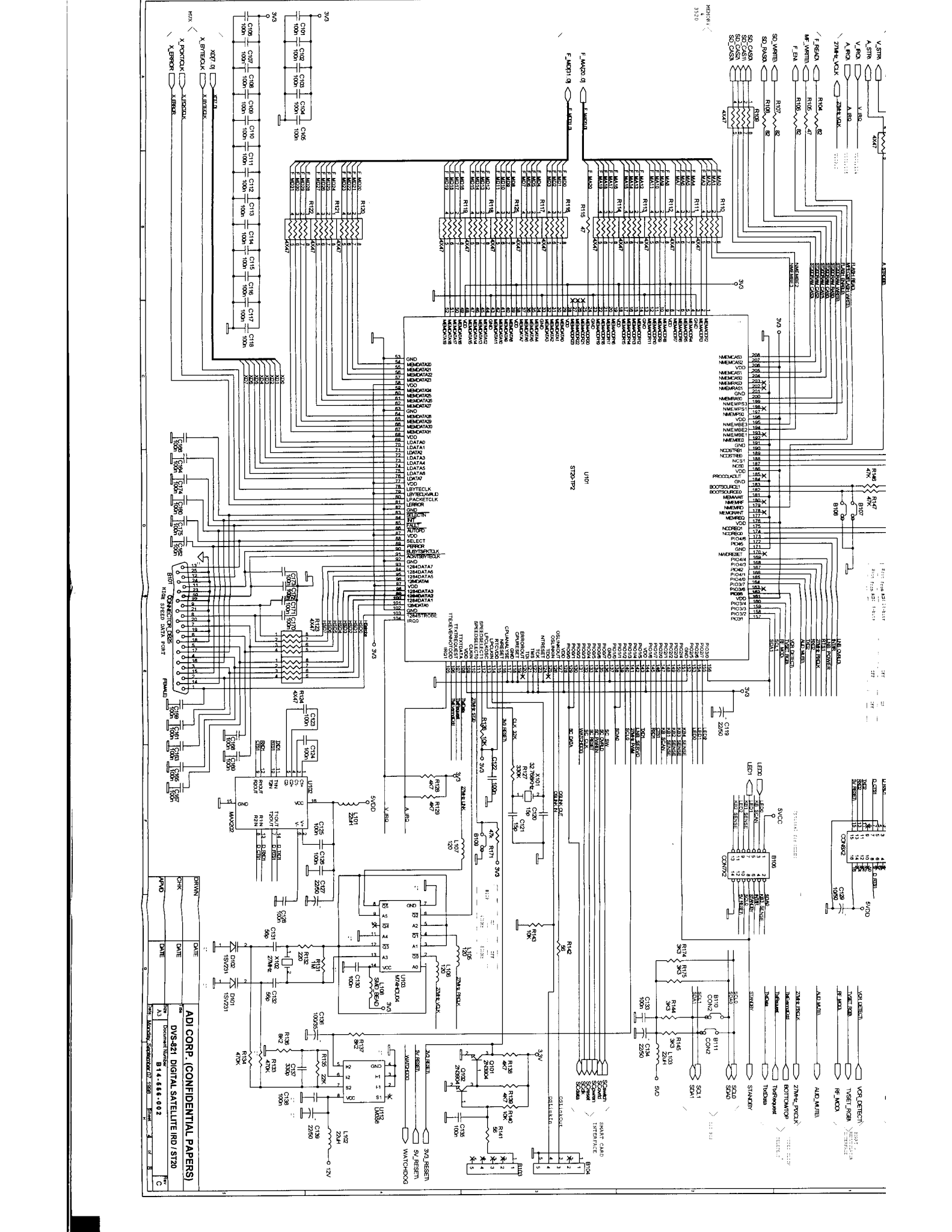


REV	DATE	BY	CHKD
1			
2			
3			
4			
5			
6			
7			
8			
9			
10			
11			
12			
13			
14			
15			
16			
17			
18			
19			
20			
21			
22			
23			
24			
25			
26			
27			
28			
29			
30			
31			
32			
33			
34			
35			
36			
37			
38			
39			
40			
41			
42			
43			
44			
45			
46			
47			
48			
49			
50			
51			
52			
53			
54			
55			
56			
57			
58			
59			
60			
61			
62			
63			
64			
65			
66			
67			
68			
69			
70			
71			
72			
73			
74			
75			
76			
77			
78			
79			
80			
81			
82			
83			
84			
85			
86			
87			
88			
89			
90			
91			
92			
93			
94			
95			
96			
97			
98			
99			
100			

ADJ CORP. (CONFIDENTIAL PAPERS)
 DVS-821 DIGITAL SATELLITE RFD / LINK
 Document Number: B14-888-002
 Date: 7/28/88
 Rev: 1



DRAWN: _____ DATE: _____
 CHK: _____ DATE: _____
 APP'D: _____ DATE: _____
ADI CORP. (CONFIDENTIAL PAPERS)
 DVS-821 DIGITAL SATELLITE RD / MPEG2
 DOCUMENT NUMBER: 614-668-002
 REV: _____



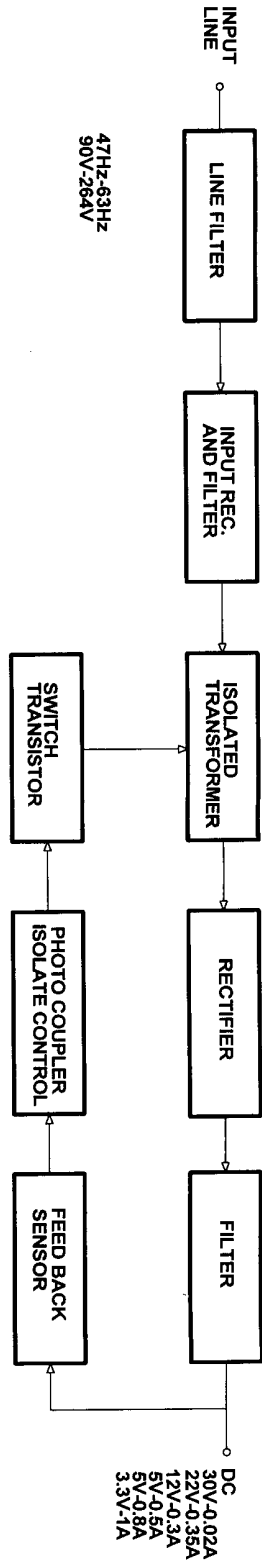
ADI CORP. (CONFIDENTIAL PAPERS)

DVS-421 DIGITAL SATELLITE RND / S170

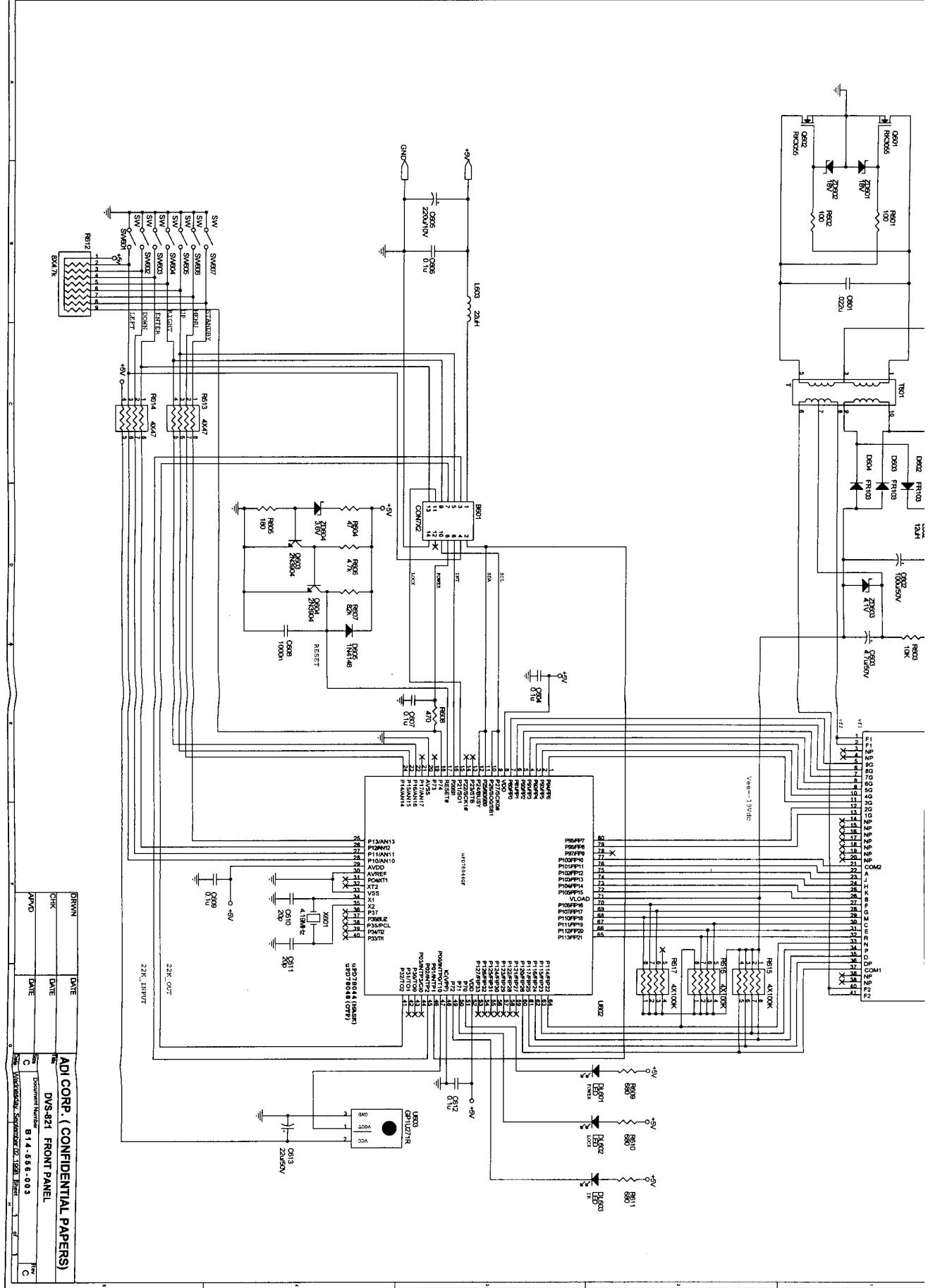
REV	DATE	BY	CHK	APP
1				
2				
3				
4				
5				
6				
7				
8				
9				
10				

Document Number: B 14-668-002

Rev: 10



DRWN	DATE	ADI CORP. (CONFIDENTIAL PAPERS)	
CHK	DATE	Title	DVS-821 S.P.S. BLOCK DIAGRAM
APVD	DATE	Size	A3
		Document Number	B 14-556-001-B
		Date	Monday, June 01 1998
		Sheet	1 of 1
		Rev	A



DATE	DATE
CHK	DATE
APVD	DATE

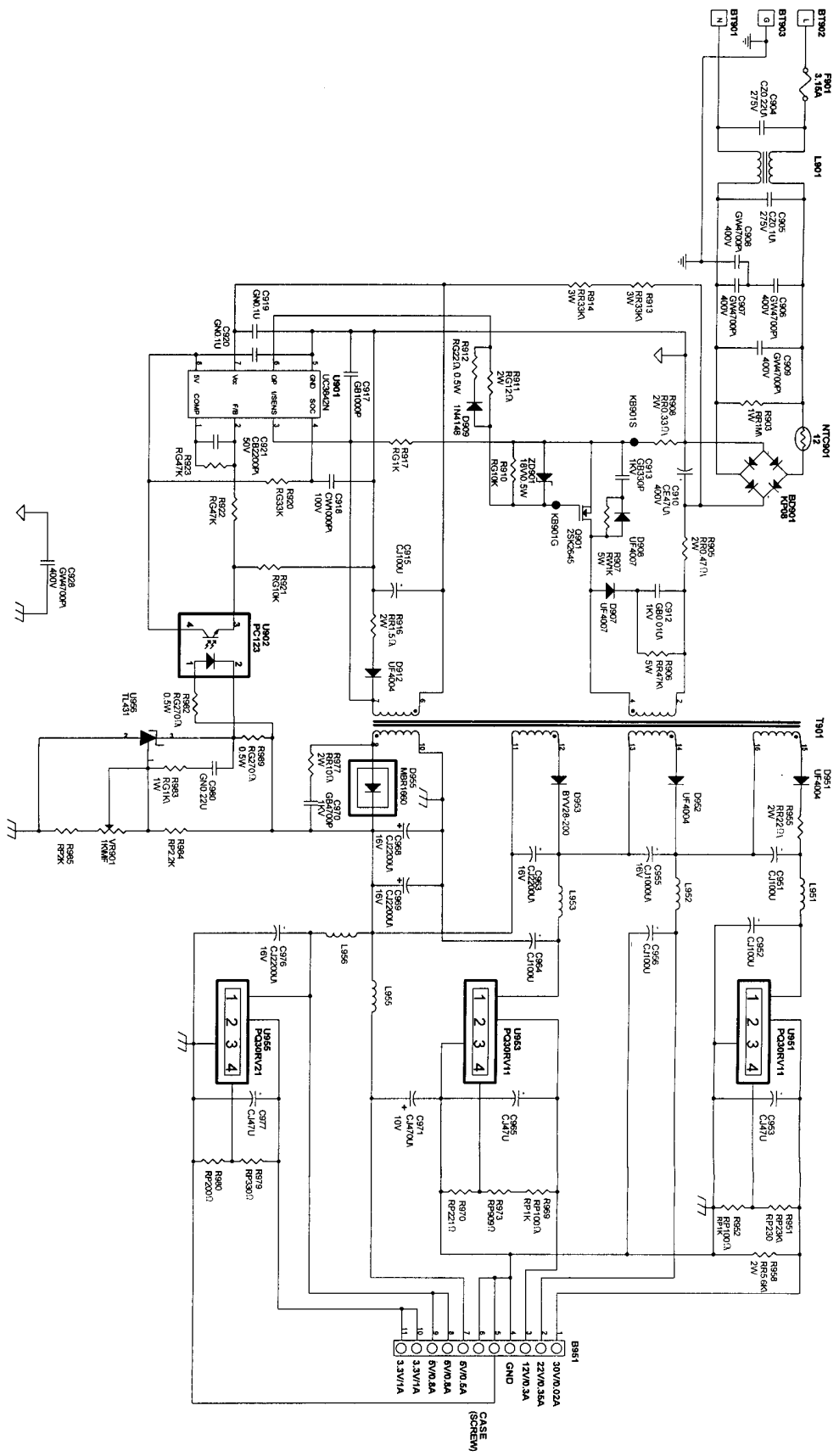
ADI CORP. (CONFIDENTIAL PAPERS)

DVS-921 FRONT PANEL

Document Number B 14-555-003

REV C

10/15/80



REVISED	DATE	BY	ADJ CORP. (CONFIDENTIAL PAPERS)
CHK	DATE	BY	DVS-821 SWITCHING POWER SUPPLY
APP'D	DATE	BY	Document Number B 14-686-001
			Part: Modelling, September 07, 1968, Boston