

1.1.6 Optional Socket

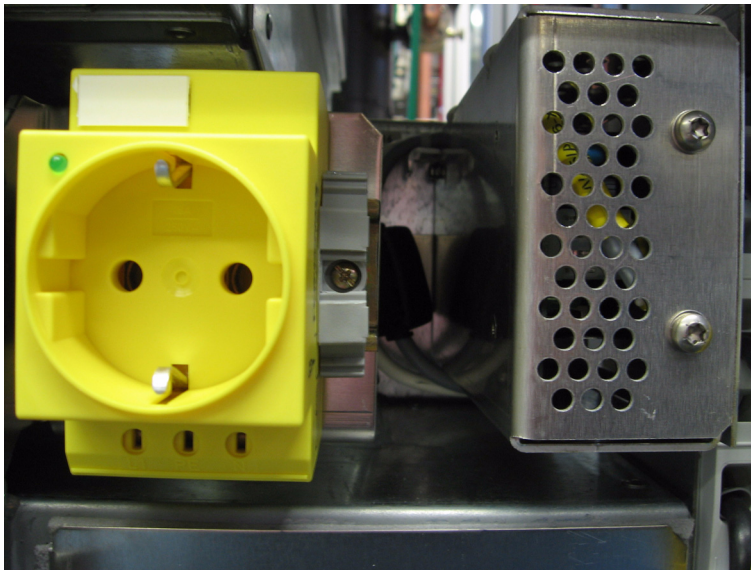


Fig. 10 *Optional socket*

The optional socket is not connected with the transmitter network and must be supplied by means of a separate power lead.

1.1.7 Grounding Bolt

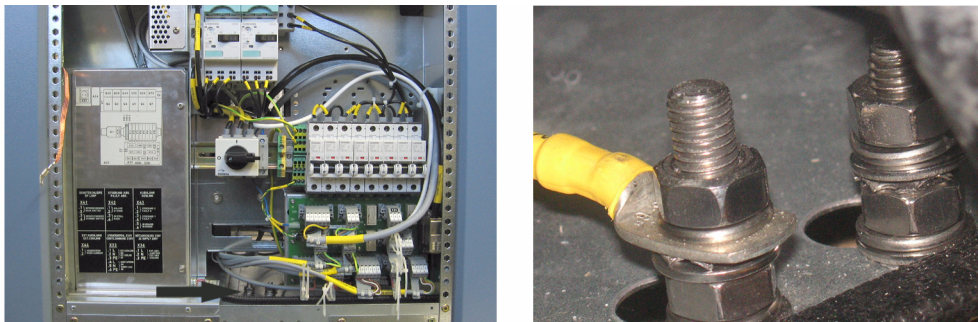


Fig. 11 *Grounding bolt*

The grounding bolt connects the rack with the station's main grounding terminal.

Note *The rack must be connected to the main grounding terminal in all cases.*