

1.1.3 Automatic Line Fuse

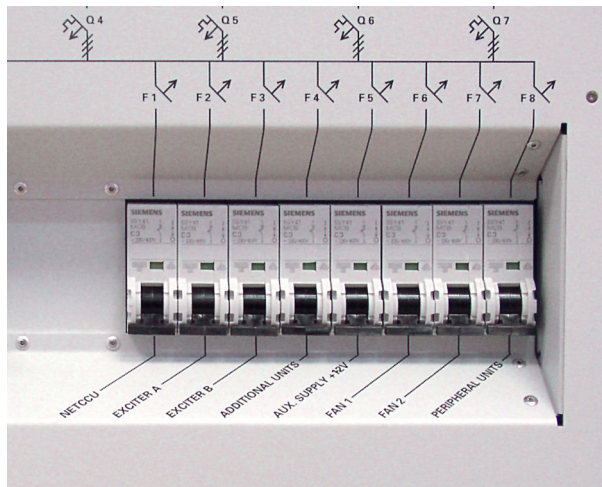


Fig. 7 Automatic line fuses

The automatic line fuses are used to protect the power lines, e.g. in the event of a short-circuit and when the following equipment is switched on and off:

- NetCCU® (F1)
- EXCITER A/B (F2/F3)
- Optional add-on equipment (F4)
- Auxiliary power supply (F5)
- Fan (F6/F7)
- Controller (F8)
 - External cooling system
 - Controller for dummy antennas
 - Optional external fan

The arrangement of the equipment and the automatic line fuses is shown on the cover.

1.1.4 Power Distribution Board

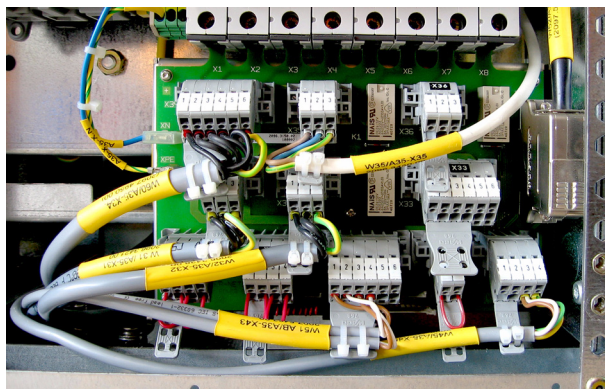


Fig. 8 Power distribution board