

July 12, 1999

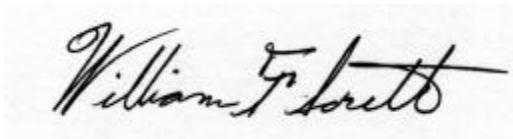
FEDERAL COMMUNICATIONS COMMISSION
Chief Mass Media Bureau
c/o Authorization and Evaluation Division
7435 Oakland Mills Road
Columbia, MD 21046

RE: FCC ID BQM22802332

Dear Sirs:

This letter forms a request for waiver of FCC Rules Section 74.750(c)(2) to allow measurement of the mean power of the spurious emissions, in lieu of peak, as outlined in the letters from Thomas P. Stanley, Chief Engineer, FCC to Dane Erickson, Hammett and Edison and Robert L. Cutts, FCC to Timothy P. Hulick, Acrodyne, for the above referenced certification submittal.

Regards,

A handwritten signature in black ink, reading "William F. Soreth". The signature is written in a cursive style with a large, stylized "W" and "S".

William F. Soreth,
System Design

WFS/mgd

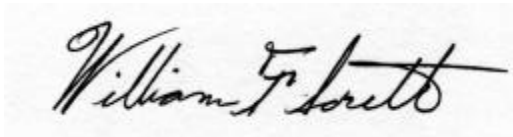
July 12, 1999

FEDERAL COMMUNICATIONS COMMISSION
Authorization and Evaluation Services
7435 Oakland Mills Road
Columbia, MD 21046

Dear Sirs:

Enclosed is a submission for certification of an ACRODYNE TRH/1KE television transmitter.

Regards

A handwritten signature in black ink, reading "William F. Soreth". The signature is written in a cursive style with a large, stylized 'W' and a long, sweeping horizontal line extending from the end of the name.

William F. Soreth
Systems Engineer

Enclosures

Certification Submission For Acrodyne Model TRH/1KE Television Transmitter

LIST OF EXHIBITS

<u>PARAGRAPH</u>	<u>TITLE</u>
1. 2.1033(c)(1)	Name of Applicant
2. 2.1033(c)(2)	FCC Identifier
3. 2.1033(c)(4)	Type of Emissions
4. 2.1033(c)(5)	Frequency Range
5. 2.1033(c)(6)	Operating Power Range
6. 2.1033(c)(7)	Maximum Power Rating
7. 2.1033(c)(8)	Power Amplifier DC Source
8. 2.1033(c)(9)	Tune-up Procedure
9. 2.1033(c)(10)	Power and Frequency control circuitry
10. 2.1033(c)(11)	Equipment Identification Plate
11. 2.1033(c)(12)	Photographs
12. 2.1033(c)(13)	Digital Modulation Details
13. 2.1033(c)(14)	Required Data
14. 2.1046	RF Power Output
15. 2.1047(d)	Modulation Characteristics
16. 2.1049	Occupied Bandwidth
17. 2.1051	Spurious Emissions
18. 2.1053	Field Strength of Spurious Emissions
19. 2.1055	Frequency Stability

20. 2.1057	Spectrum Investigation
21. 74.750(c)(1)	Frequency Response
22. 74.750(c)(2)	Spurious and Harmonic Outputs
23. 74.750(c)(3)	Carrier Frequency Stability
24. 74.750(c)(4)	AGC Operation
25. 74.750(c)(5)	Automatic On/Off Operation
26. 74.750(c)(6)	Power Tube (device) Rating
27. 74.750(c)(7)	Automatic Station Identification
28. 74.750(c)(8)	Wiring and Shielding
29. 74.750(d)(1)	Visual Transmitter
30. 74.750(d)(2)	Aural Transmitter

APPLICATION FOR CERTIFICATION

FCC IDENTIFICATION NUMBER: BQM22802332

DATE: July 12, 1999

APPLICABLE FCC PARAGRAPH: 2.1033(c)

SUB-PARAGRAPH: (1)

PARAGRAPH TITLE: NAME OF APPLICANT

AA

This application is submitted by the manufacturer Acrodyne Industries, Inc., 516 Township Line Rd. Blue Bell PA, 19422

APPLICATION FOR CERTIFICATION

FCC IDENTIFICATION NUMBER: BQM22802332

DATE: July 12, 1999

APPLICABLE FCC PARAGRAPH: 2.1033(c)

SUB-PARAGRAPH: (2)

PARAGRAPH TITLE: FCC IDENTIFIER

AA

The following is the FCC Identifier for the Acrodyne model number TRH/1KE equipment for which certification is sought:

BQM22802332

The following is the description of the Acrodyne model number TRH/1KE equipment for which certification is sought:

INPUT: Baseband video and audio.

OUTPUT: Any single TV channel between 174 and 216 MHz (channels 7 to 13).

POWER: 1000 watts peak of sync visual power maximum, 100 watts average aural power.

The equipment identification plate is shown in paragraph section 2.983(f) in this application.
The location of the identification plate is shown in paragraph section 2.983(g) in this application.

Quantity production of the TRH/1KE is planned.

APPLICATION FOR CERTIFICATION

FCC IDENTIFICATION NUMBER: **BQM22802332**

DATE: **July 12, 1999**

APPLICABLE FCC PARAGRAPH: **2.1033(c)**

SUB-PARAGRAPH: **(4)**

PARAGRAPH TITLE: **TYPE OF EMISSIONS**

AA

The TRH/1KE television transmitter is used to broadcast C3F visual and F3E aural emissions.

APPLICATION FOR CERTIFICATION

FCC IDENTIFICATION NUMBER: BQM22802332
DATE: July 12, 1999
APPLICABLE FCC PARAGRAPH: 2.1033(c)
SUB-PARAGRAPH: (5)
PARAGRAPH TITLE: FREQUENCY RANGE
AA

The output frequency range of the TRH/1KE is from 174 to 216 MHz.

APPLICATION FOR CERTIFICATION

FCC IDENTIFICATION NUMBER: BQM22802332

DATE: July 12, 1999

APPLICABLE FCC PARAGRAPH: 2.1033(c)

SUB-PARAGRAPH: (6)

PARAGRAPH TITLE: OPERATING POWER RANGE

AA

The power rating of the output of the TRH/1KE is between 500 and 1000 watts peak of sync visual, and 50 and 100 watts average aural. Varying the output level is accomplished by varying the IF level within the Exciter Chassis.

APPLICATION FOR CERTIFICATION

FCC IDENTIFICATION NUMBER: **BQM22802332**

DATE: **July 12, 1999**

APPLICABLE FCC PARAGRAPH: **2.1033(c)**

SUB-PARAGRAPH: **(7)**

PARAGRAPH TITLE: **MAXIMUM POWER RATING**

AA

The maximum power rating of the TRH/1KE is 1000 watts peak of sync visual power and 100 watt average aural. Proper operation is excess of 100 percent is limited by final power amplifier non-linearities.

APPLICATION FOR CERTIFICATION

FCC IDENTIFICATION NUMBER: **BQM22802332**

DATE: **July 12, 1999**

APPLICABLE FCC PARAGRAPH: **2.1033(c)**

SUB-PARAGRAPH: **(8)**

PARAGRAPH TITLE: **POWER AMPLIFIER DC SOURCE**

AA

The TRH/1KE final amplifier module is made up of two RF power transistors configured in parallel. Four such modules are used to produce the required output power. The total current and voltage requirement of the final power stage is 6 amperes at 27 volts DC. A device data sheet is included in section 75.750(c)(6).

APPLICATION FOR CERTIFICATION

FCC IDENTIFICATION NUMBER: BQM22802332

DATE: July 12, 1999

APPLICABLE FCC PARAGRAPH: 2.1033(c)

SUB-PARAGRAPH: (9)

PARAGRAPH TITLE: TUNE-UP PROCEDURE

AA

The transmitter tune up procedure is contained in the TRH/1KE technical manual supplied. No tuning is required for the RF stages as they are all broadband stages.

APPLICATION FOR CERTIFICATION

FCC IDENTIFICATION NUMBER: BQM22802332

DATE: July 12, 1999

APPLICABLE FCC PARAGRAPH: 2.1033(c)

SUB-PARAGRAPH: (10)

PARAGRAPH TITLE: POWER AND FREQUENCY CONTROL

AA

The output frequency of the TRH/1KE is determined by the stability of the visual intermediate frequency oscillator and the up conversion oscillator. The description of these circuits is contained in the instruction manual supplied.

The linearity of the output amplifier RF devices requires the use of an output bandpass filter to suppress spurious radiation below that required by the applicable section of the rules.

APPLICATION FOR CERTIFICATION

FCC IDENTIFICATION NUMBER: BQM22802332
DATE: July 12, 1999
APPLICABLE FCC PARAGRAPH: 2.1033(c)
SUB-PARAGRAPH: (11)
PARAGRAPH TITLE: EQUIPMENT IDENTIFICATION PLATE
AA

FCC ID: BQM22802332
TRH/1KE
ACRODYNE INDUSTRIES, INC

APPLICATION FOR CERTIFICATION

FCC IDENTIFICATION NUMBER: BQM22802332

DATE: July 12, 1999

APPLICABLE FCC PARAGRAPH: 2.1033(c)

SUB-PARAGRAPH: (12)

PARAGRAPH TITLE: EQUIPMENT PHOTOGRAPHS

AA



APPLICATION FOR CERTIFICATION

FCC IDENTIFICATION NUMBER: BQM22802332

DATE: July 12, 1999

APPLICABLE FCC PARAGRAPH: 2.1033(c)

SUB-PARAGRAPH: (12)

PARAGRAPH TITLE: EQUIPMENT PHOTOGRAPHS

AA



APPLICATION FOR CERTIFICATION

FCC IDENTIFICATION NUMBER: BQM22802332

DATE: July 12, 1999

APPLICABLE FCC PARAGRAPH: 2.1033(c)

SUB-PARAGRAPH: (13)

PARAGRAPH TITLE: DIGITAL MODULATION DETAILS

AA

This section requiring a description of any digital modulation techniques is not applicable to the certification sought.

APPLICATION FOR CERTIFICATION

FCC IDENTIFICATION NUMBER: BQM22802332

DATE: July 12, 1999

APPLICABLE FCC PARAGRAPH: 2.1033(c)

SUB-PARAGRAPH: (14)

PARAGRAPH TITLE: DATA REQUIRED

AA

The data required by sections 2.985 through 2.997 inclusive will be found under the appropriate paragraph listings following.

APPLICATION FOR CERTIFICATION

FCC IDENTIFICATION NUMBER: BQM22802332

DATE: July 12, 1999

APPLICABLE FCC PARAGRAPH: 2.1046

SUB-PARAGRAPH:

PARAGRAPH TITLE: RF POWER OUTPUT

AA

The output power rating of the TRH/1KE is 1000 watts peak of sync visual. The aural carrier power rating is 100 watts.

The following is a list of equipment used to determine output power.

1. Narda 3020A Directional Coupler.
2. Hewlett-Packard model 8753D Network Analyzer
4. Hewlett-Packard model 435A Power Meter with Hewlett-Packard model 8481A Power Sensor.
5. Hewlett-Packard model 8590A Spectrum Analyzer.

The directional coupler coupling value was measured over the frequency band of interest using the network analyzer.

With a sync and blanking only video test signal applied, the visual carrier only power was measured using the power meter. The meter reading, in dBm, is the peak output power rating of the transmitter in dBm minus the directional coupler coupling loss in dB multiplied by the peak-to-average conversion factor of 0.595. The aural carrier is then applied and the spectrum analyzer is used to establish at minus 10dB aural to visual power ratio.

APPLICATION FOR CERTIFICATION

FCC IDENTIFICATION NUMBER: BQM22802332
DATE: July 12, 1999
APPLICABLE FCC PARAGRAPH: 2.1047
SUB-PARAGRAPH: (d)
PARAGRAPH TITLE: MODULATION CHARACTERISTICS
AA

The modulation characteristics are addressed in paragraph 74.750(c)(1) and (d)(1).

Various photographs showing the basic transmitter linearity are provided.

APPLICATION FOR CERTIFICATION

FCC IDENTIFICATION NUMBER: BQM22802332

DATE: July 12, 1999

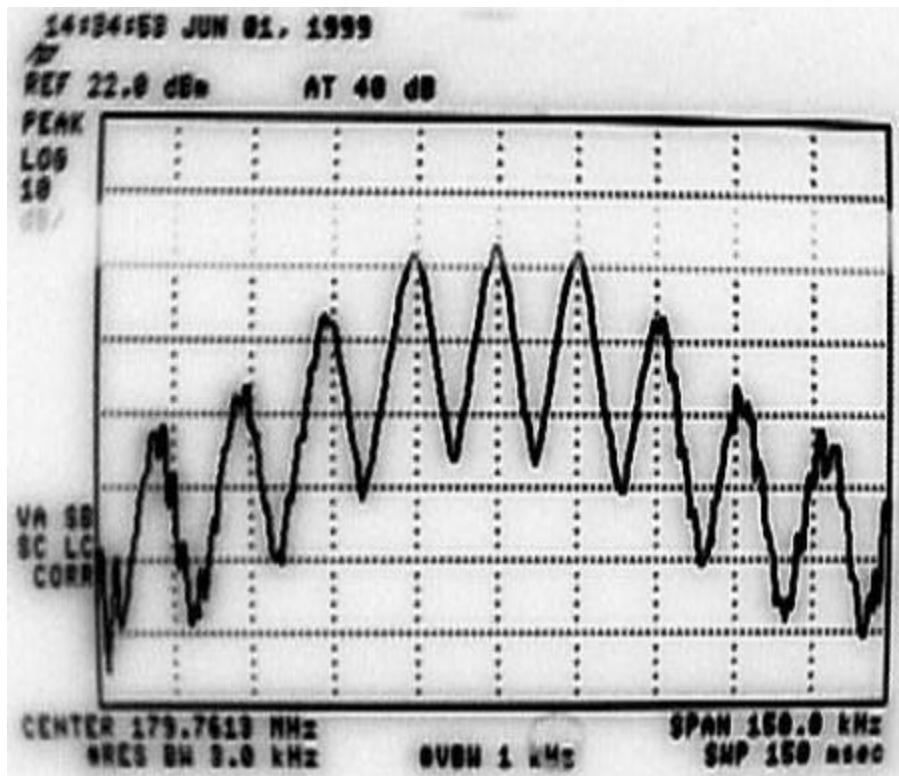
APPLICABLE FCC PARAGRAPH: 2.1049

SUB-PARAGRAPH:

PARAGRAPH TITLE: OCCUPIED BANDWIDTH

AA

The photograph shows the occupied bandwidth of the aural carrier modulation at a modulating frequency of 15 kHz at 21.25 kHz deviation.



APPLICATION FOR CERTIFICATION

FCC IDENTIFICATION NUMBER: BQM22802332

DATE: July 12, 1999

APPLICABLE FCC PARAGRAPH: 2.1051

SUB-PARAGRAPH:

PARAGRAPH TITLE: SPURIOUS EMISSIONS

AA

The out-of-band spurious signals measured are listed in the table below. The photographs provided display peak visual power at the top graticule line. Vertical scale factor is 10 dB per major division. The values for the spurious signals were obtained with the use of video filtering within the spectrum analyzer to achieve average, versus peak, signals. The reporting of average spurious signal levels is done in accordance with "EIA Electrical Performance Standards for Television Broadcast Transmitters, Out of Channel Intermodulation Distortion". The video filtering was in place when the photographs were taken. A 75% color bar video test signal was used. All other spurious signals were greater than 80 dB below the peak of sync reference.

SPURIOUS EMISSION FREQUENCY MHZ, REL. TO F VISUAL	AMPLITUDE, DB, REL. TO PEAK VISUAL
-4.50	-64
+9.00	-77

APPLICATION FOR CERTIFICATION

FCC IDENTIFICATION NUMBER: BQM22802332

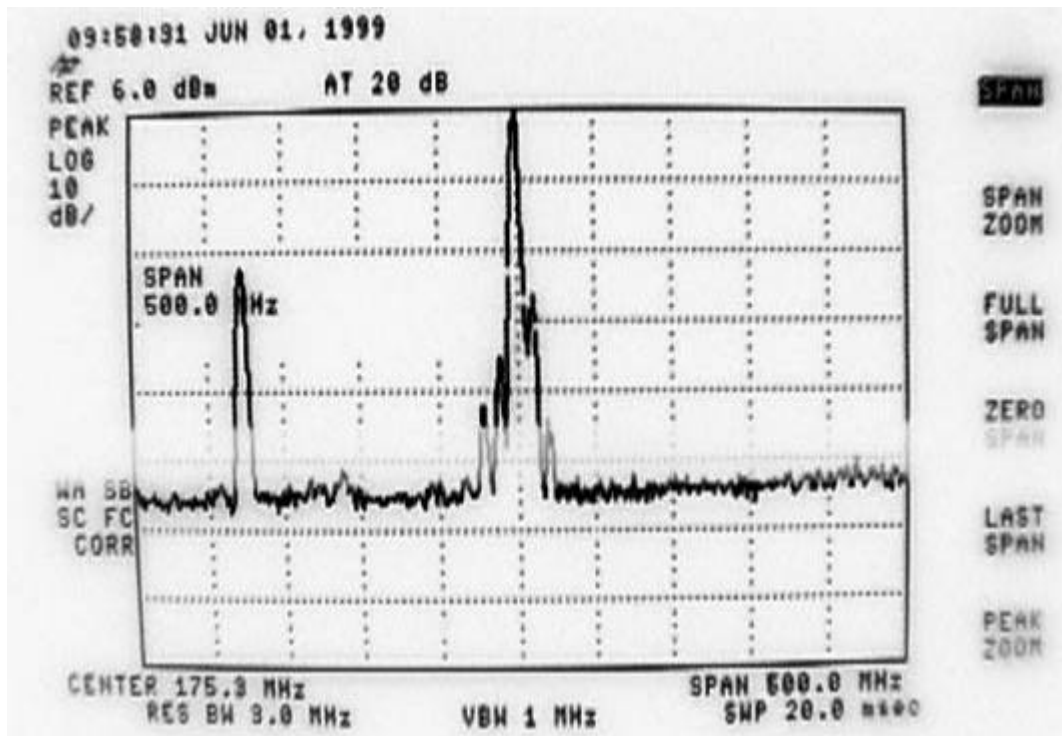
DATE: July 12, 1999

APPLICABLE FCC PARAGRAPH: 2.1051

SUB-PARAGRAPH:

PARAGRAPH TITLE: SPURIOUS EMISSIONS

AA



APPLICATION FOR CERTIFICATION

FCC IDENTIFICATION NUMBER: BQM22802332

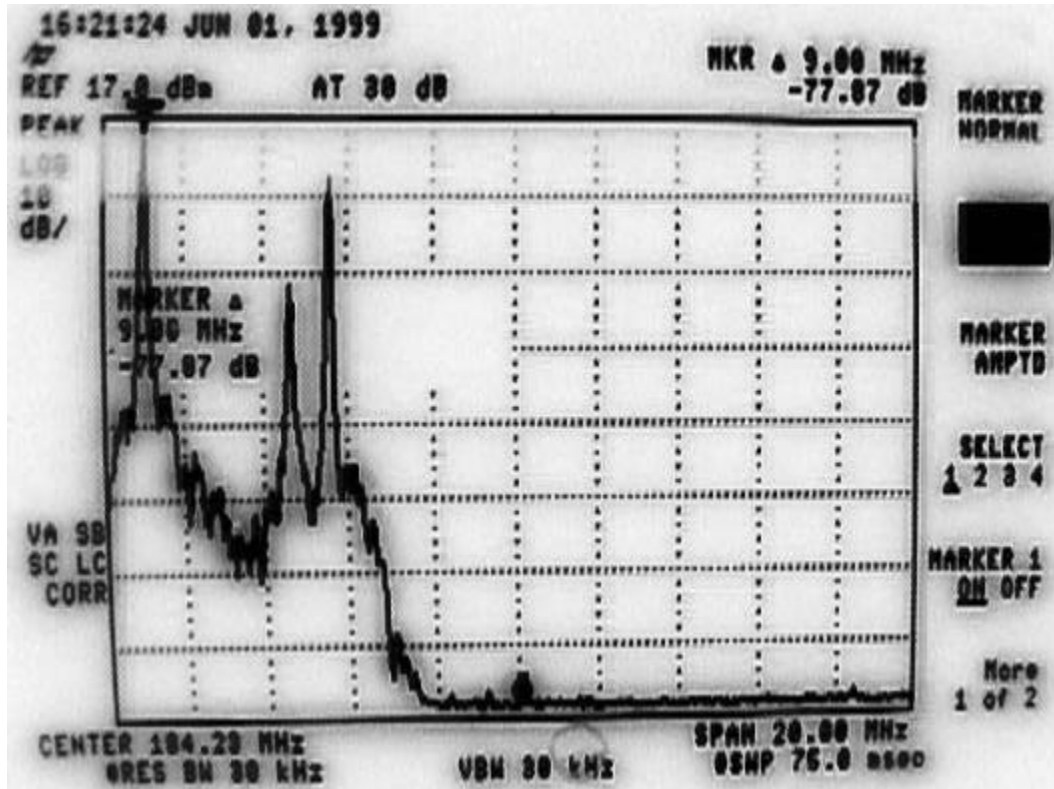
DATE: July 12, 1999

APPLICABLE FCC PARAGRAPH: 2.1051

SUB-PARAGRAPH:

PARAGRAPH TITLE: SPURIOUS EMISSIONS

AA



APPLICATION FOR CERTIFICATION

FCC IDENTIFICATION NUMBER: BQM22802332

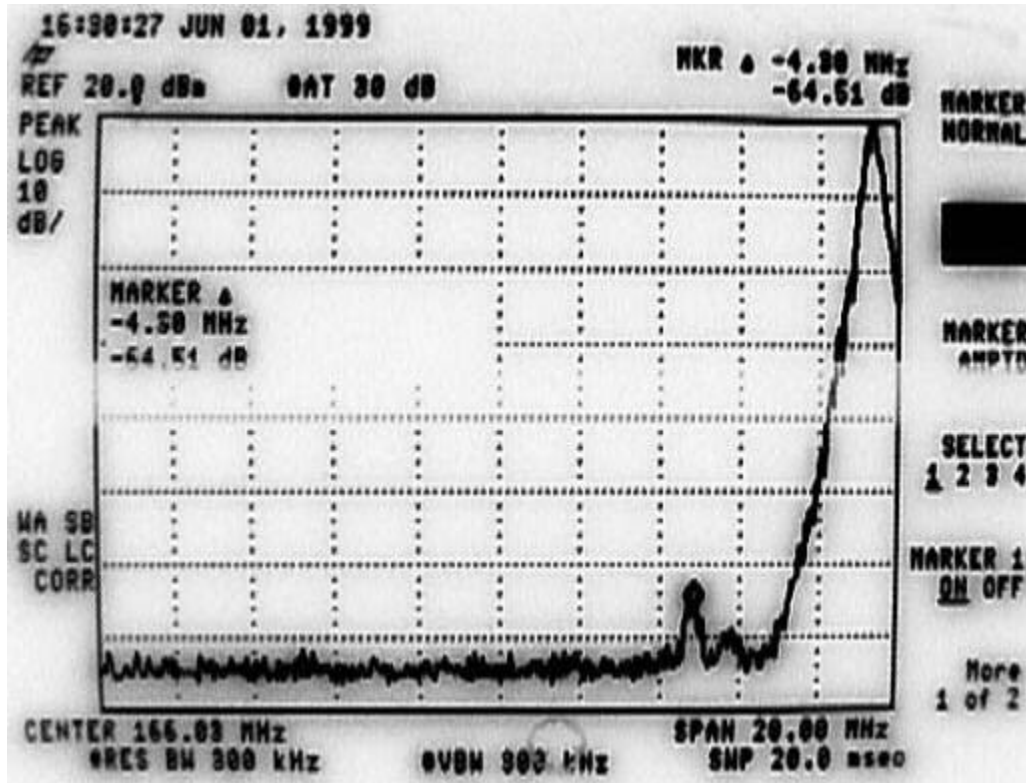
DATE: July 12, 1999

APPLICABLE FCC PARAGRAPH: 2.1051

SUB-PARAGRAPH:

PARAGRAPH TITLE: SPURIOUS EMISSIONS

AA



APPLICATION FOR CERTIFICATION

FCC IDENTIFICATION NUMBER: BQM22802332

DATE: July 12, 1999

APPLICABLE FCC PARAGRAPH: 2.1053

SUB-PARAGRAPH:

PARAGRAPH TITLE: FIELD STRENGTH OF SPURIOUS
EMISSIONS

AA

Cabinet radiation was checked with the transmitter operating at full rated visual and aural power into a dummy load. A calibrated antenna and spectrum analyzer was used to measure the radiation. The receiving antenna was located approximately three meters from the transmitter cabinet. All emissions were greater than 80dB below 1000 watts.

Power line radiation was checked by lightly coupling a spectrum analyzer to the AC line. No spurious signals attributable to the transmitter were observed. The frequency range from 0.01 to 6.5 GHz was investigated during the preceding test.

APPLICATION FOR CERTIFICATION

FCC IDENTIFICATION NUMBER: BQM22802332

DATE: July 12, 1999

APPLICABLE FCC PARAGRAPH: 2.1055

SUB-PARAGRAPH:

PARAGRAPH TITLE: FREQUENCY STABILITY

AA

Information pertaining to the frequency stability of the TRH/1KE is contained in section 74.750 (c) (3) of this application.

APPLICATION FOR CERTIFICATION

FCC IDENTIFICATION NUMBER: BQM22802332

DATE: July 12, 1999

APPLICABLE FCC PARAGRAPH: 2.1057

SUB-PARAGRAPH:

PARAGRAPH TITLE: SPECTRUM INVESTIGATION

AA

The information required by this paragraph is covered in section 2.991.

APPLICATION FOR CERTIFICATION

FCC IDENTIFICATION NUMBER: BQM22802332

DATE: July 12, 1999

APPLICABLE FCC PARAGRAPH: 74.750

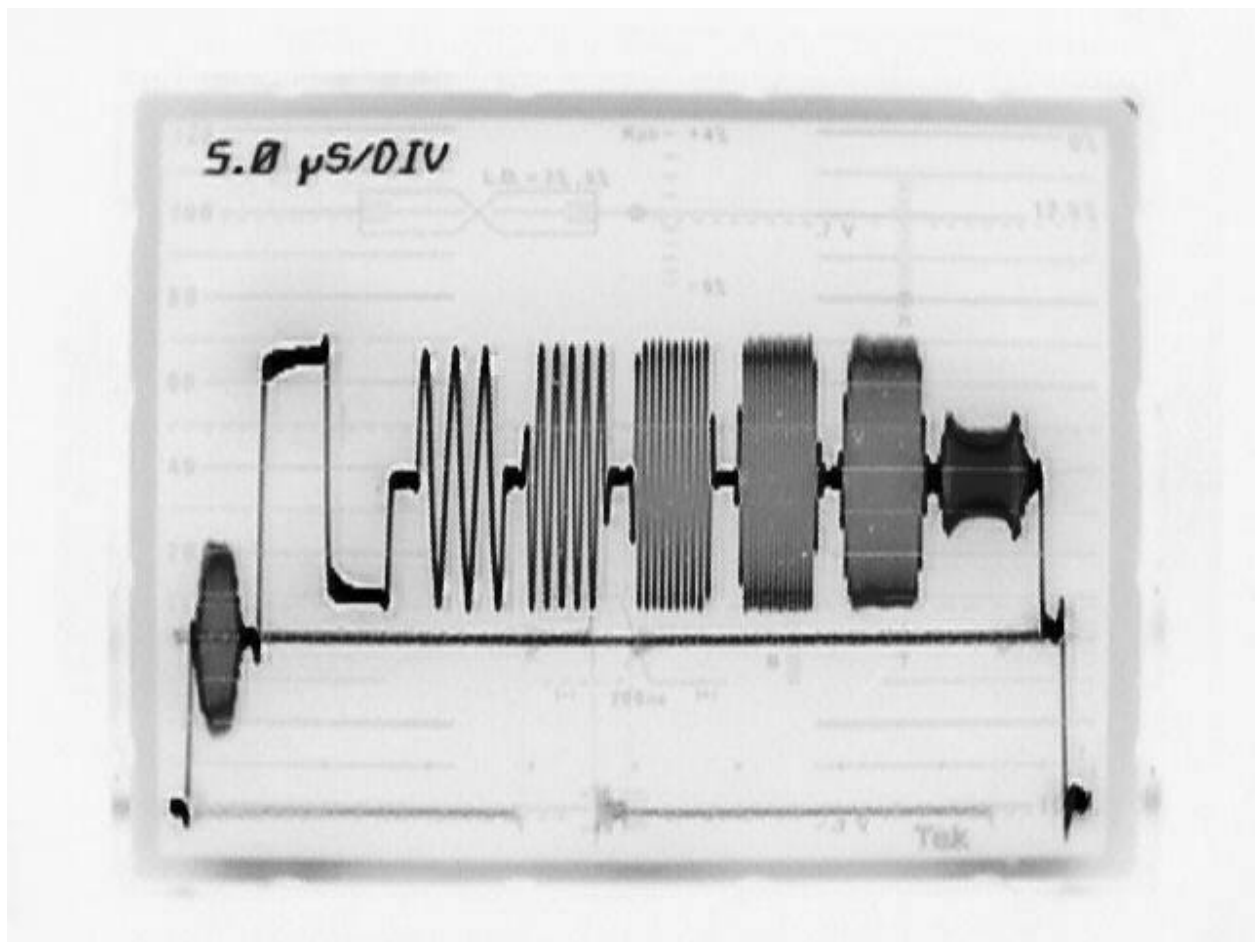
SUB-PARAGRAPH: (c)(1)

PARAGRAPH TITLE: FREQUENCY RESPONSE

AA

The transmitter for which certification is sought has baseband video as its input. The frequency response of the transmitter is demonstrated in the photographs of section 74.750(d)(1).

The transfer characteristics of the transmitter are demonstrated in the following photographs.



Multiburst-one line

APPLICATION FOR CERTIFICATION

FCC IDENTIFICATION NUMBER: BQM22802332

DATE: July 12, 1999

APPLICABLE FCC PARAGRAPH: 74.750

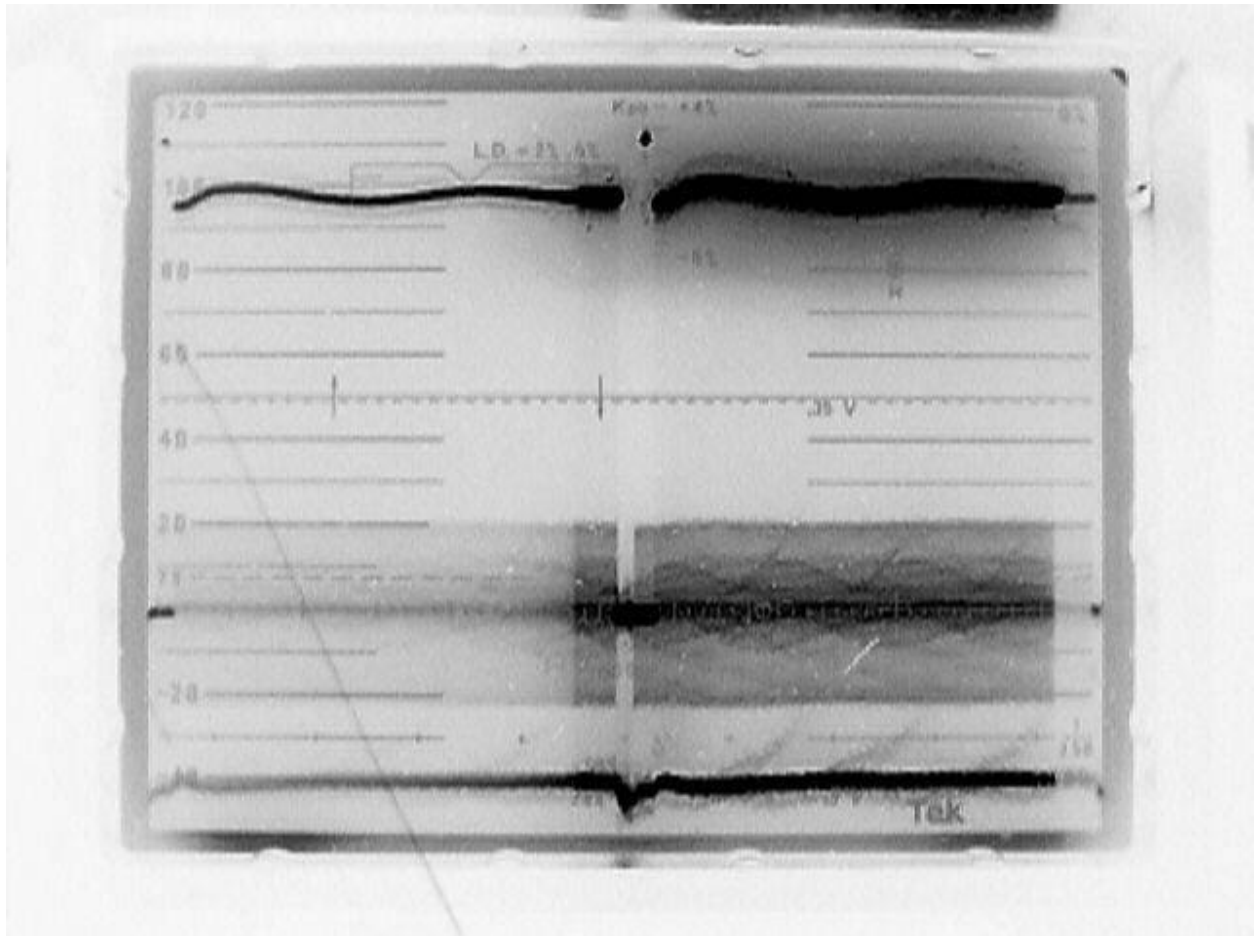
SUB-PARAGRAPH: (c)(1)

PARAGRAPH TITLE: FREQUENCY RESPONSE

AA

The transmitter for which certification is sought has baseband video as its input. The frequency response of the transmitter is demonstrated in the photographs of section 74.750(d)(1).

The transfer characteristics of the transmitter are demonstrated in the following photographs.



Two Field

APPLICATION FOR CERTIFICATION

FCC IDENTIFICATION NUMBER: BQM22802332

DATE: July 12, 1999

APPLICABLE FCC PARAGRAPH: 74.750

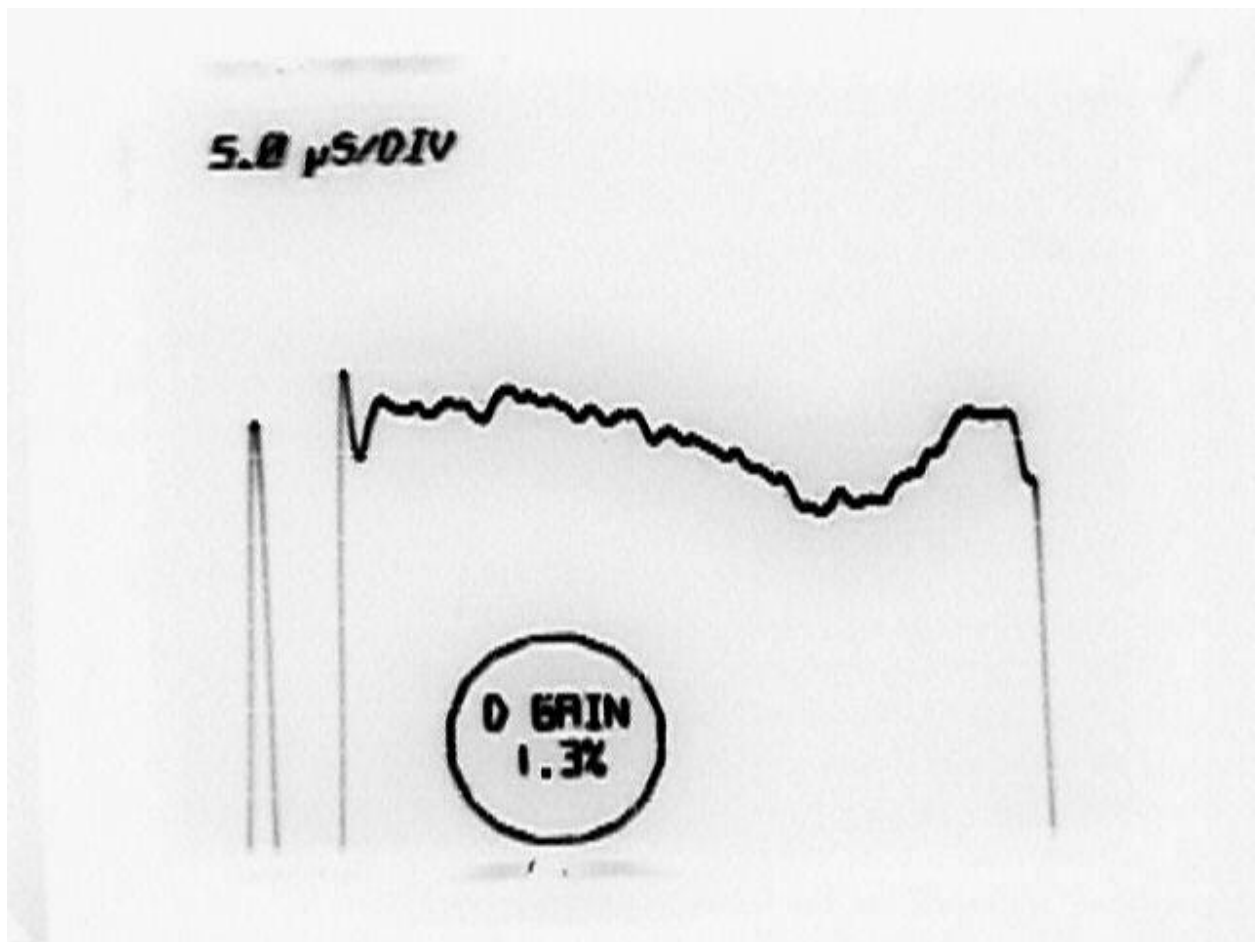
SUB-PARAGRAPH: (c)(1)

PARAGRAPH TITLE: FREQUENCY RESPONSE

AA

The transmitter for which certification is sought has baseband video as its input. The frequency response of the transmitter is demonstrated in the photographs of section 74.750(d)(1).

The transfer characteristics of the transmitter are demonstrated in the following photographs.



Differential Gain

APPLICATION FOR CERTIFICATION

FCC IDENTIFICATION NUMBER: BQM22802332

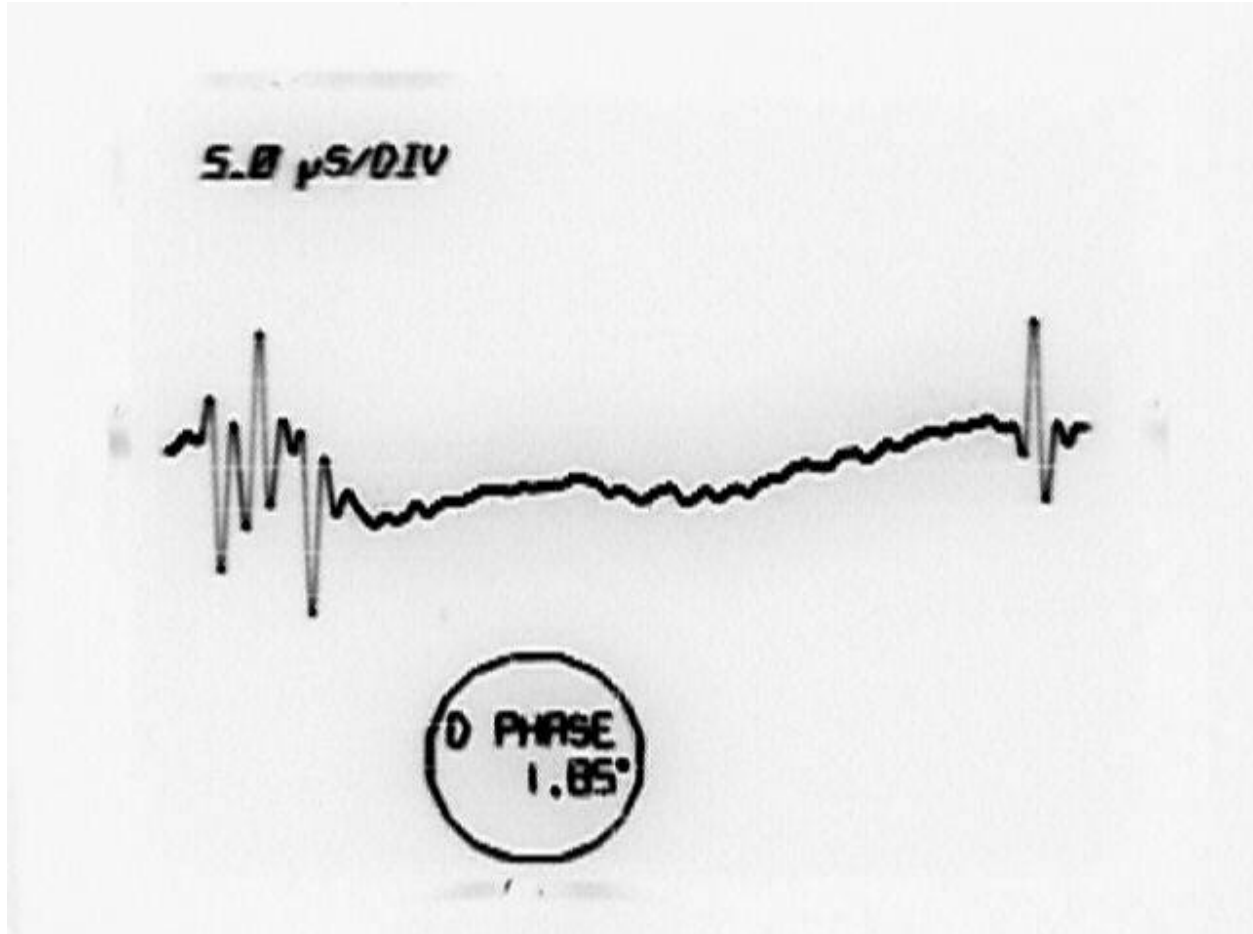
DATE: July 12, 1999

APPLICABLE FCC PARAGRAPH: 74.750

SUB-PARAGRAPH: (c)(1)

PARAGRAPH TITLE: FREQUENCY RESPONSE

AA



Differential Phase

APPLICATION FOR CERTIFICATION

FCC IDENTIFICATION NUMBER: BQM22802332
DATE: July 12, 1999
APPLICABLE FCC PARAGRAPH: 74.750
SUB-PARAGRAPH: (c)(2)
PARAGRAPH TITLE: SPURIOUS AND HARMONICS OUTPUTS
AA

The information required by this section is covered in section 2.991.

APPLICATION FOR CERTIFICATION

FCC IDENTIFICATION NUMBER: BQM22802332

DATE: July 12, 1999

APPLICABLE FCC PARAGRAPH: 74.750

SUB-PARAGRAPH: (c)(3)

PARAGRAPH TITLE: CARRIER FREQUENCY STABILITY
AA

The transmitter visual carrier operating frequency is dependent on the stability of both the visual IF 45.75 MHz reference oscillator and the upconversion local oscillator. Oscillator frequency stability data is presented on the following pages. A regulated dc supply provides power to the oscillators and as a result changes in frequency over the 85% to 115% ac input voltage range are immeasurable. Worst case visual carrier operating frequency stability occurs if both oscillators shift in a direction such that the frequency changes add.

45.75 MHz Crystal Maximum Deviation	.15khz
Channel Oscillator Maximum Deviation	<u>+.48kHz</u>

Maximum Visual Carrier Output Frequency Deviation	.63khz
---	--------

The transmitter aural carrier operating frequency is dependent on the aural IF modulated 4.5 MHz oscillator, the visual IF modulator 45.75 MHz oscillator and the up conversion oscillator. Oscillator frequency stability data is presented on the following pages. Worst case aural carrier operating stability occurs if the three oscillators shift in a direction such that the frequency shifts add.

45.75 MHz Crystal Maximum Deviation	.15khz
4.5 MHz Crystal Maximum Deviation	.25khz
Channel Oscillator Maximum Deviation	<u>+.48khz</u>

Maximum Aural Carrier Output Frequency Deviation	.88khz
--	--------

APPLICATION FOR CERTIFICATION

FCC IDENTIFICATION NUMBER: BQM22802332

DATE: July 12, 1999

APPLICABLE FCC PARAGRAPH: 74.750

SUB-PARAGRAPH: (c)(3)

PARAGRAPH TITLE: CARRIER FREQUENCY STABILITY

AA

CHANNEL LOCAL OSCILLATOR
FREQUENCY VS. TEMPERATURE

fo= 221.00000

TEMP, °C	FREQ, MHz	ΔF, kHz
-30	221.00020	.20
-20	221.00032	.32
-10	221.00028	.28
0	221.00005	.05
+10	221.00042	.42
+20	221.00048	.48
+30	221.00048	.48
+40	221.00047	.47
+50	221.00020	.20

MAXIMUM FREQUENCY DEVIATION: .48kHz

APPLICATION FOR CERTIFICATION

FCC IDENTIFICATION NUMBER: BQM22802332

DATE: July 12, 1999

APPLICABLE FCC PARAGRAPH: 74.750

SUB-PARAGRAPH: (c)(3)

PARAGRAPH TITLE: CARRIER FREQUENCY STABILITY

AA

4.5 MHz REFERENCE CRYSTAL FREQUENCY VS. TEMPERATURE

TEMP, °C	FREQ, MHz	ΔF , kHz
-30	4.50025	.25
-20	4.50025	.25
-10	4.50022	.22
0	4.50017	.17
+10	4.50012	.12
+20	4.50007	.07
+30	4.50003	.03
+40	4.50001	.01
+50	4.49995	.05

MAXIMUM FREQUENCY DEVIATION: .25kHz

APPLICATION FOR CERTIFICATION

FCC IDENTIFICATION NUMBER: BQM22802332

DATE: July 12, 1999

APPLICABLE FCC PARAGRAPH: 74.750

SUB-PARAGRAPH: (c)(3)

PARAGRAPH TITLE: CARRIER FREQUENCY STABILITY

AA

45.75 MHz CRYSTAL
FREQUENCY VS. TEMPERATURE

TEMP, °C	FREQ, MHz	ΔF , kHz
-30	45.74999	.04
-20	45.74999	.01
-10	45.74985	.15
0	45.74998	.02
+10	45.75000	---
+20	45.75000	---
+30	45.75005	.05
+40	45.75008	.08
+50	45.75010	.10

MAXIMUM FREQUENCY DEVIATION: .15kHz

APPLICATION FOR CERTIFICATION

FCC IDENTIFICATION NUMBER: **BQM22802332**

DATE: **July 12, 1999**

APPLICABLE FCC PARAGRAPH: **74.750**

SUB-PARAGRAPH: **(c)(4)**

PARAGRAPH TITLE: **AGC OPERATION**

AA

The transmitter has as its input signal baseband video. Variation in the amplitude of its input baseband video signal will result a change in the depth of modulation of the visual output signal, but not in peak output power

APPLICATION FOR CERTIFICATION

FCC IDENTIFICATION NUMBER: **BQM22802332**

DATE: **July 12, 1999**

APPLICABLE FCC PARAGRAPH: **74.750**

SUB-PARAGRAPH: **(c)(5)**

PARAGRAPH TITLE: **AUTOMATIC ON/OFF OPERATION**

AA

Automatic on/off operation is accomplished in the video input section of the Modulator of the TRH/1KE. The presence of video is detected and is processed to control a relay which turns the final power amplifier power supply on and off. A more detailed description of the circuit is available in the instruction manual.

APPLICATION FOR CERTIFICATION

FCC IDENTIFICATION NUMBER: BQM22802332
DATE: July 12, 1999
APPLICABLE FCC PARAGRAPH: 74.750
SUB-PARAGRAPH: (c)(6)
PARAGRAPH TITLE: POWER TUBE (DEVICE) RATING
AA

The final output stage of the TRH/1KE consists of two transistors operating in parallel. A copy of the device data sheet is included.

An analog meter located on the front panel of the final amplifier module permits the operator to determine the power supply voltage applied and the current drawn by the four transistors.

APPLICATION FOR CERTIFICATION

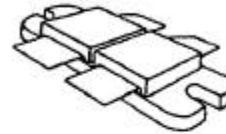
FCC IDENTIFICATION NUMBER: BQM22802332
DATE: July 12, 1999



SD1485

RF & MICROWAVE TRANSISTORS TV/LINEAR APPLICATIONS

- 170 - 230 MHz
- 32 VOLTS
- COMMON EMITTER
- GOLD METALLIZATION
- CLASS AB PUSH PULL
- INTERNAL INPUT MATCHING
- HIGH SATURATED POWER CAPABILITY
- DESIGNED FOR HIGH POWER LINEAR OPERATION
- $P_{OUT} = 200$ W MIN. WITH 11.0 dB GAIN

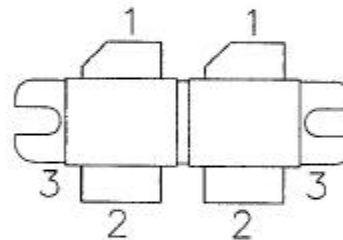


2 x .437 x .450 2LFL (M175)
epoxy sealed

ORDER CODE
SD1485

BRANDING
SD1485

PIN CONNECTION



1. Collector 3. Emitter
2. Base

DESCRIPTION

The SD1485 is a gold metallized epitaxial silicon NPN planar transistor using diffused emitter ballast resistors for high linearity Class AB operation in VHF and Band III television transmitters and transposers.

ABSOLUTE MAXIMUM RATINGS ($T_{case} = 25^{\circ}C$)

Symbol	Parameter	Value	Unit
V_{CBO}	Collector-Base Voltage	65	V
V_{CEO}	Collector-Emitter Voltage	35	V
V_{EBO}	Emitter-Base Voltage	3.0	V
I_C	Device Current	25	A
P_{DISS}	Power Dissipation	385	W
T_J	Junction Temperature	+200	$^{\circ}C$
T_{STG}	Storage Temperature	- 50 to +150	$^{\circ}C$

THERMAL DATA

$R_{TH(j-c)}$	Junction-Case Thermal Resistance	0.45	$^{\circ}C/W$
---------------	----------------------------------	------	---------------

APPLICATION FOR CERTIFICATION

FCC IDENTIFICATION NUMBER: BQM22802332

DATE: July 12, 1999

APPLICABLE FCC PARAGRAPH: 74.750

SUB-PARAGRAPH: (c)(7)

PARAGRAPH TITLE: AUTOMATIC STATION IDENTIFICATION
AA

Station identification of the TRH/1KE is accomplished by amplitude modulating the aural FM carrier. A modulating tone frequency of 500 Hz is used. The output from the 500 Hz oscillator is fed to a trap tuned to the aural intermediate frequency which causes 40 % modulation of the carrier. The oscillator is controlled by a solid state encoder which repeats the proper code sequence every 20 minutes. The stations call sign is transmitted twice every time the encoder is activated.

APPLICATION FOR CERTIFICATION

FCC IDENTIFICATION NUMBER: BQM22802332
DATE: July 12, 1999
APPLICABLE FCC PARAGRAPH: 74.750
SUB-PARAGRAPH: (c)(8)
PARAGRAPH TITLE: WIRING AND SHIELDING
AA

The TRH/1KE is wired in accordance with good electrical and mechanical engineering practice. The entire unit is self contained in a cabinet 22 inches that is completely enclosed.

APPLICATION FOR CERTIFICATION

FCC IDENTIFICATION NUMBER: BQM22802332

DATE: July 12, 1999

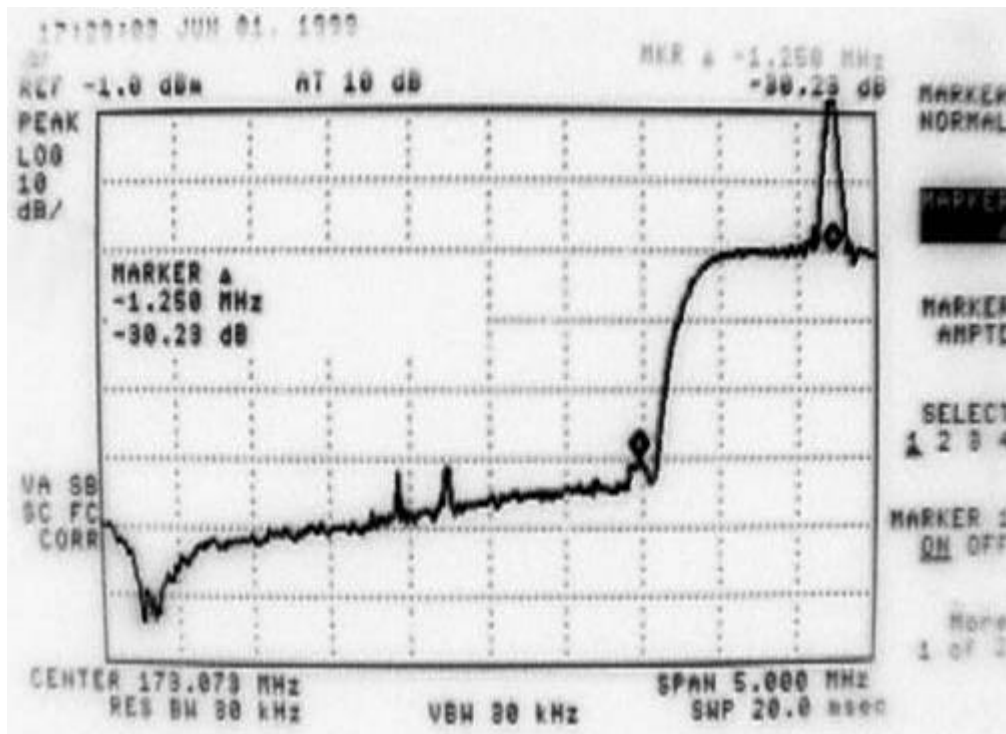
APPLICABLE FCC PARAGRAPH: 74.750

SUB-PARAGRAPH: (d)(1)

PARAGRAPH TITLE: VISUAL TRANSMITTER

AA

The following photographs show the in-channel visual modulation characteristics as produced at the output of the transmitter operating at 1000 watts peak of sync.



APPLICATION FOR CERTIFICATION

FCC IDENTIFICATION NUMBER: BQM22802332

DATE: July 12, 1999

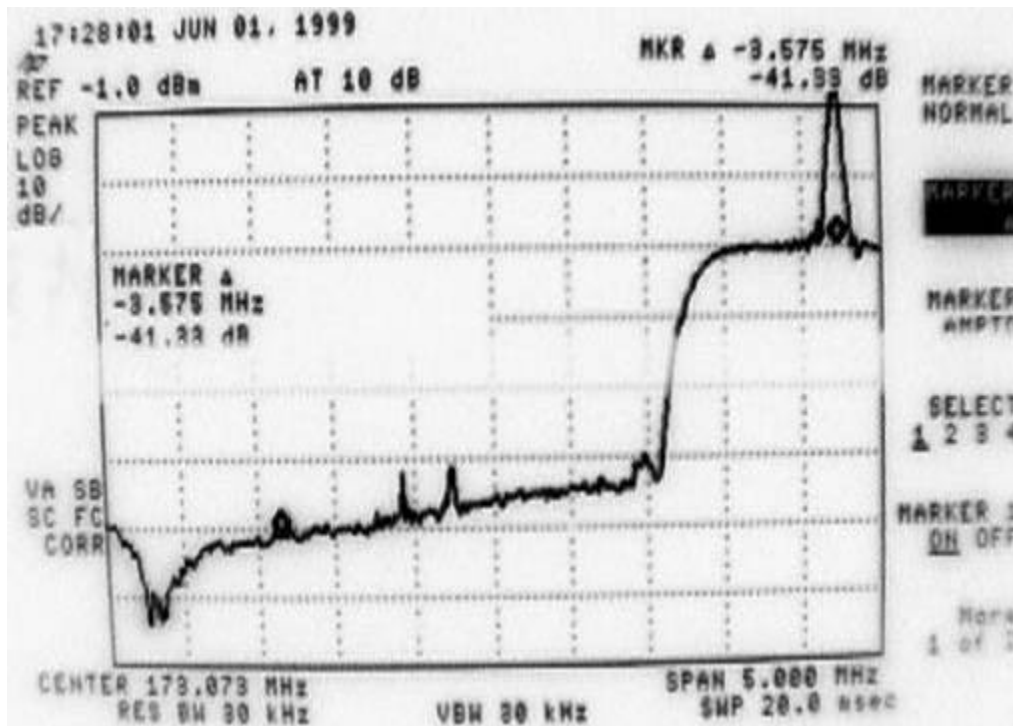
APPLICABLE FCC PARAGRAPH: 74.750

SUB-PARAGRAPH: (d)(1)

PARAGRAPH TITLE: VISUAL TRANSMITTER

AA

The following photographs show the in-channel visual modulation characteristics as produced at the output of the transmitter operating at 1000 watts peak of sync.



APPLICATION FOR CERTIFICATION

FCC IDENTIFICATION NUMBER: BQM22802332

DATE: July 12, 1999

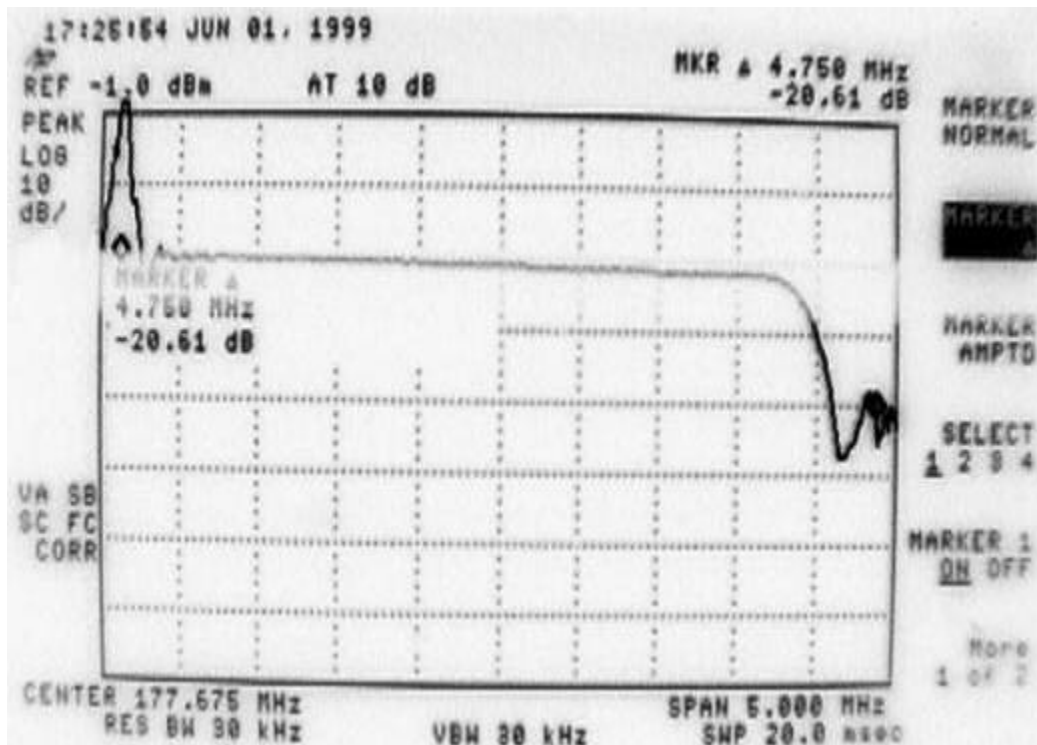
APPLICABLE FCC PARAGRAPH: 74.750

SUB-PARAGRAPH: (d)(1)

PARAGRAPH TITLE: VISUAL TRANSMITTER

AA

The following photographs show the in-channel visual modulation characteristics as produced at the output of the transmitter operating at 1000 watts peak of sync.



APPLICATION FOR CERTIFICATION

FCC IDENTIFICATION NUMBER: BQM22802332

DATE: July 12, 1999

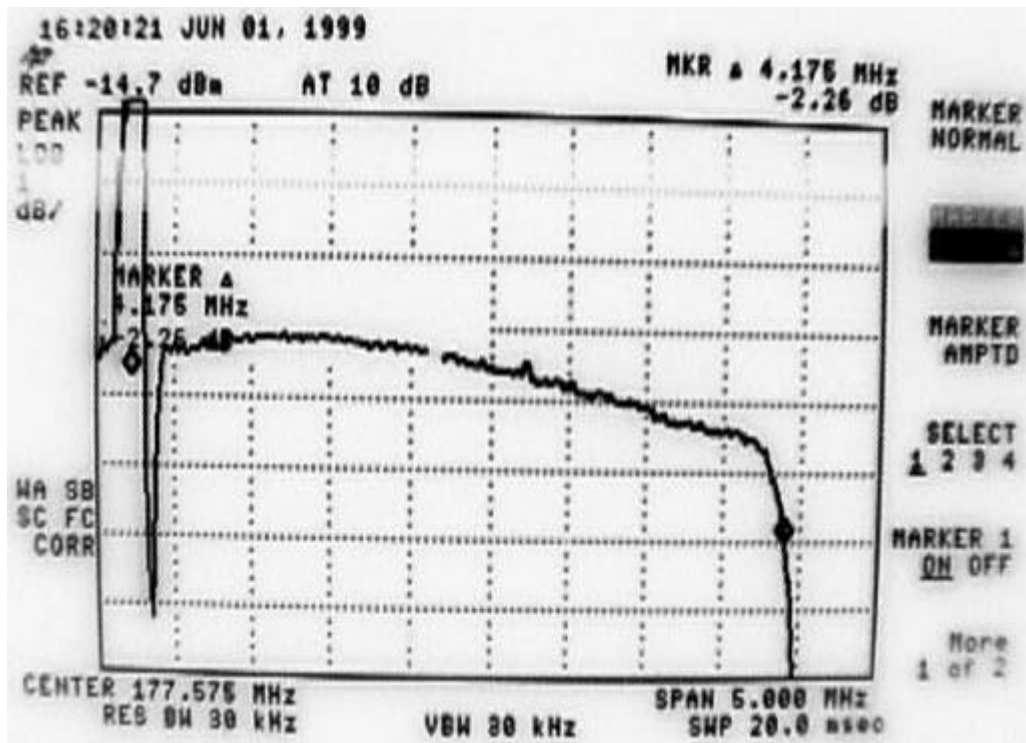
APPLICABLE FCC PARAGRAPH: 74.750

SUB-PARAGRAPH: (d)(1)

PARAGRAPH TITLE: VISUAL TRANSMITTER

AA

The following photographs show the in-channel visual modulation characteristics as produced at the output of the sync transmitter operating at 1000 watts peak of sync.



APPLICATION FOR CERTIFICATION

FCC IDENTIFICATION NUMBER: BQM22802332

DATE: July 12, 1999

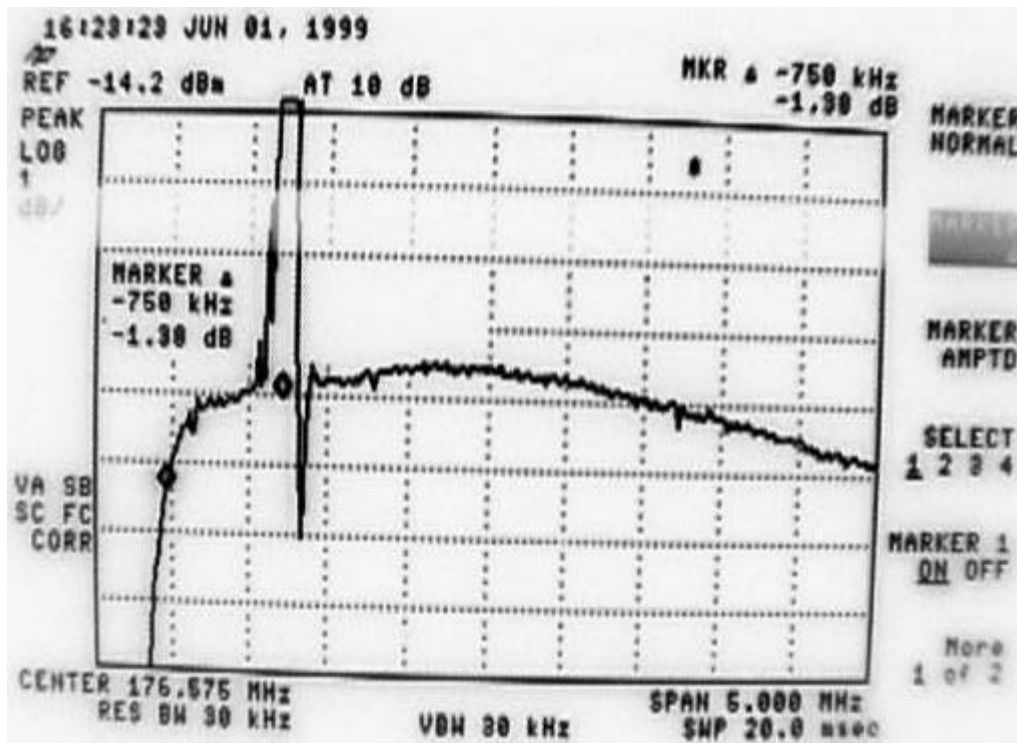
APPLICABLE FCC PARAGRAPH: 74.750

SUB-PARAGRAPH: (d)(1)

PARAGRAPH TITLE: VISUAL TRANSMITTER

AA

The following photographs show the in-channel visual modulation characteristics as produced at the output of the sync transmitter operating at 1000 watts peak of sync.



APPLICATION FOR CERTIFICATION

FCC IDENTIFICATION NUMBER: BQM22802332

DATE: July 12, 1999

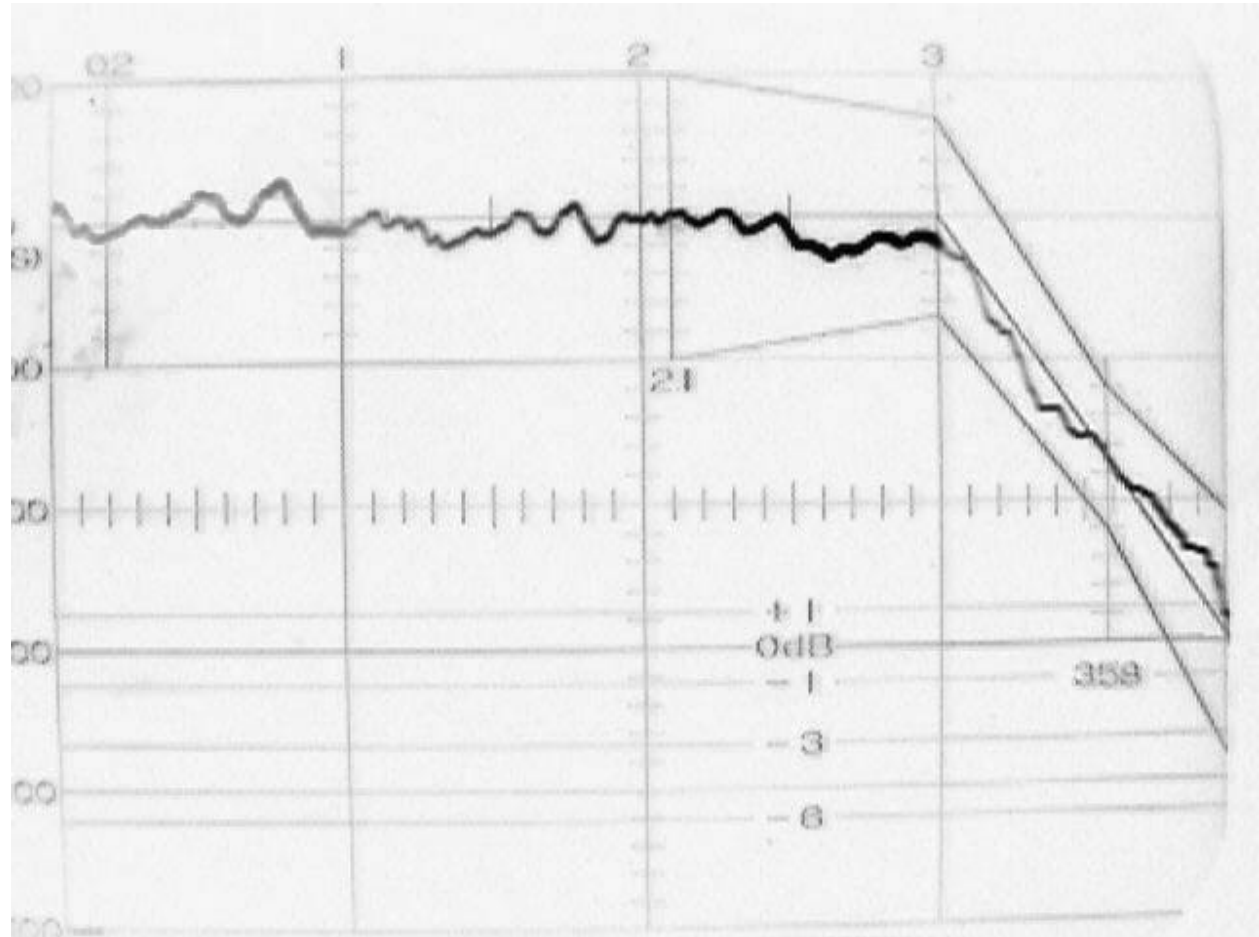
APPLICABLE FCC PARAGRAPH: 74.750

SUB-PARAGRAPH: (d)(1)

PARAGRAPH TITLE: VISUAL TRANSMITTER

AA

The following photograph shows the envelope delay characteristic of the transmitter.



APPLICATION FOR CERTIFICATION

FCC IDENTIFICATION NUMBER: BQM22802332

DATE: July 12, 1999

APPLICABLE FCC PARAGRAPH: 74.750

SUB-PARAGRAPH: (d)(2)

PARAGRAPH TITLE: AURAL TRANSMITTER

AA

The stability of the aural carrier, relative to the visual carrier, is dependent on the stability of the 45.75 MHz visual IF oscillator and the 4.5 MHz aural IF oscillator. Oscillator frequency versus temperature data is included in paragraph 74.750(c)(3) of this application. Adding the worst case deviation of both oscillators produces a maximum .44 kHz aural to visual carrier deviation. Combined carrier amplification is used therefore the aural to visual carrier separation will remain unchanged through the rest of the transmitter.