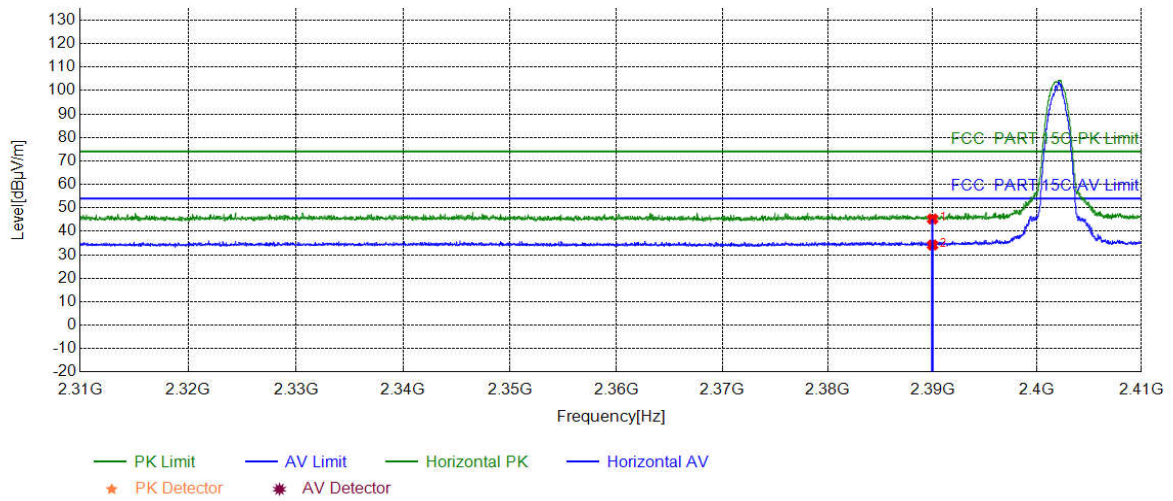


Mode:	$\pi/4$ DQPSK Transmitting	Channel:	2402
Remark:			

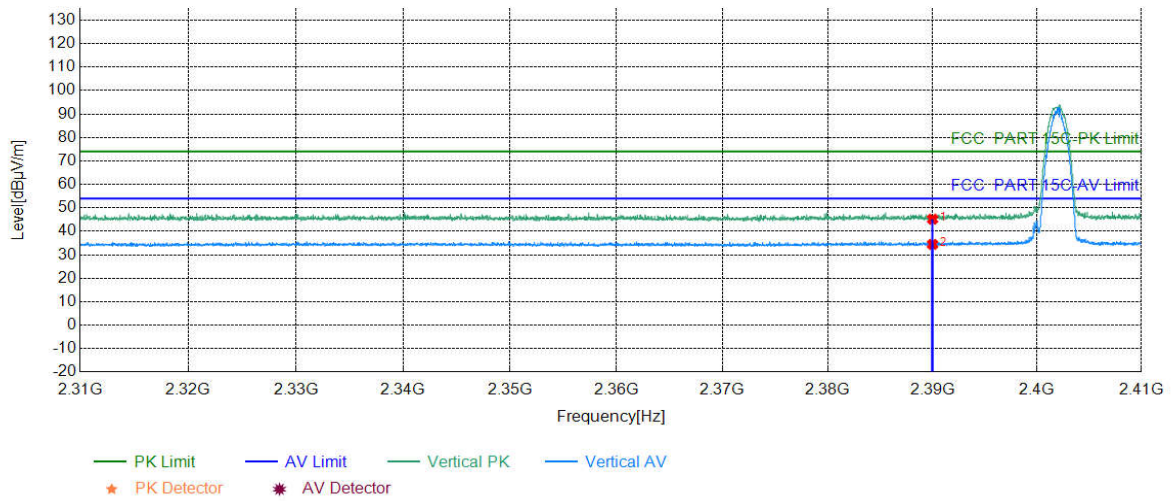
Test Graph



Suspected List									
NO	Freq. [MHz]	Factor [dB]	Reading [dBμV]	Level [dBμV/m]	Limit [dBμV/m]	Margin [dB]	Result	Polarity	Remark
1	2390.0000	5.77	39.49	45.26	74.00	28.74	PASS	Horizontal	PK
2	2390.0000	5.77	28.38	34.15	54.00	19.85	PASS	Horizontal	AV

Mode:	$\pi/4$ DQPSK Transmitting	Channel:	2402
Remark:			

Test Graph

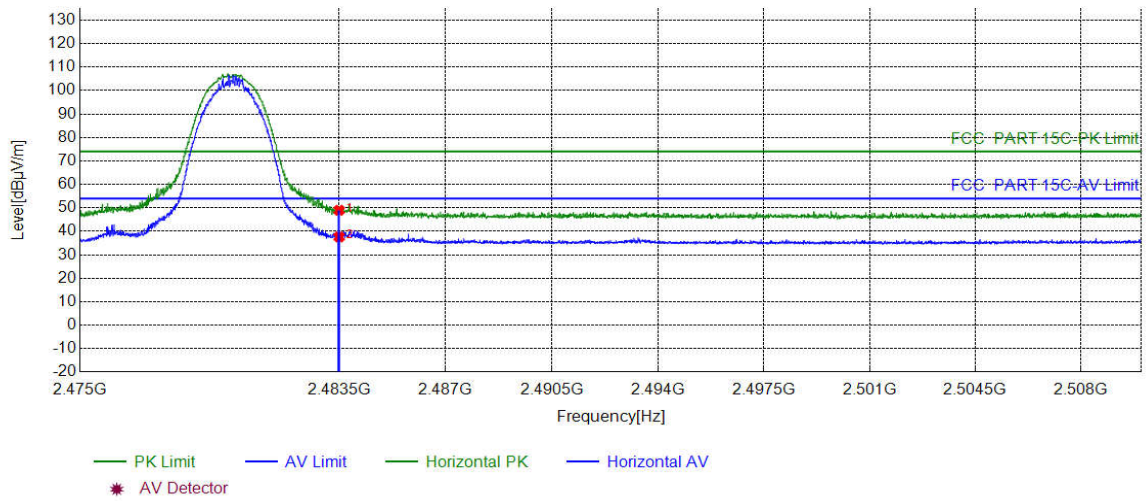


Suspected List

NO	Freq. [MHz]	Factor [dB]	Reading [dBμV]	Level [dBμV/m]	Limit [dBμV/m]	Margin [dB]	Result	Polarity	Remark
1	2390.0000	5.77	39.41	45.18	74.00	28.82	PASS	Vertical	PK
2	2390.0000	5.77	28.67	34.44	54.00	19.56	PASS	Vertical	AV

Mode:	$\pi/4$ DQPSK Transmitting	Channel:	2480
Remark:			

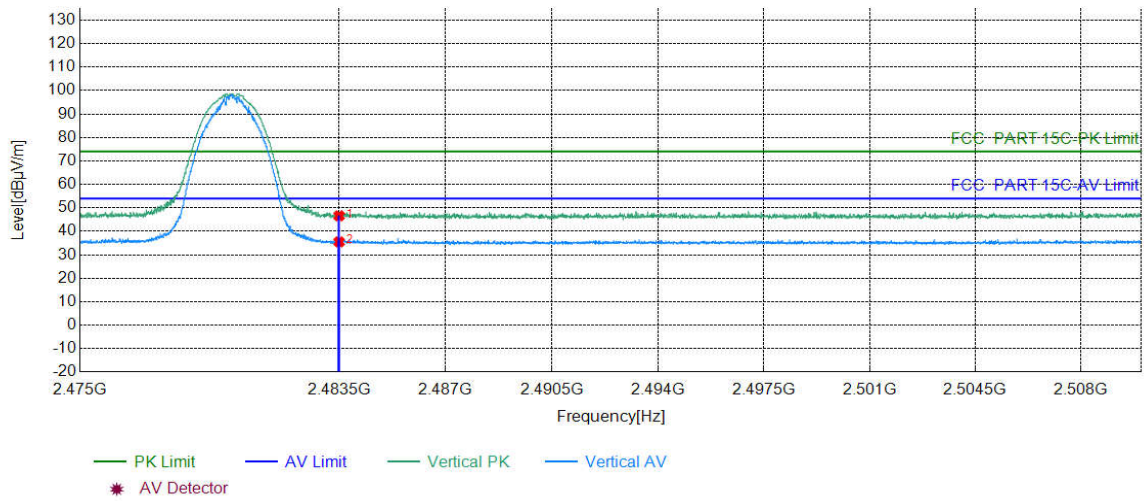
Test Graph



Suspected List									
NO	Freq. [MHz]	Factor [dB]	Reading [dBμV]	Level [dBμV/m]	Limit [dBμV/m]	Margin [dB]	Result	Polarity	Remark
1	2483.5000	6.57	42.40	48.97	74.00	25.03	PASS	Horizontal	PK
2	2483.5000	6.57	31.05	37.62	54.00	16.38	PASS	Horizontal	AV

Mode:	$\pi/4$ DQPSK Transmitting	Channel:	2480
Remark:			

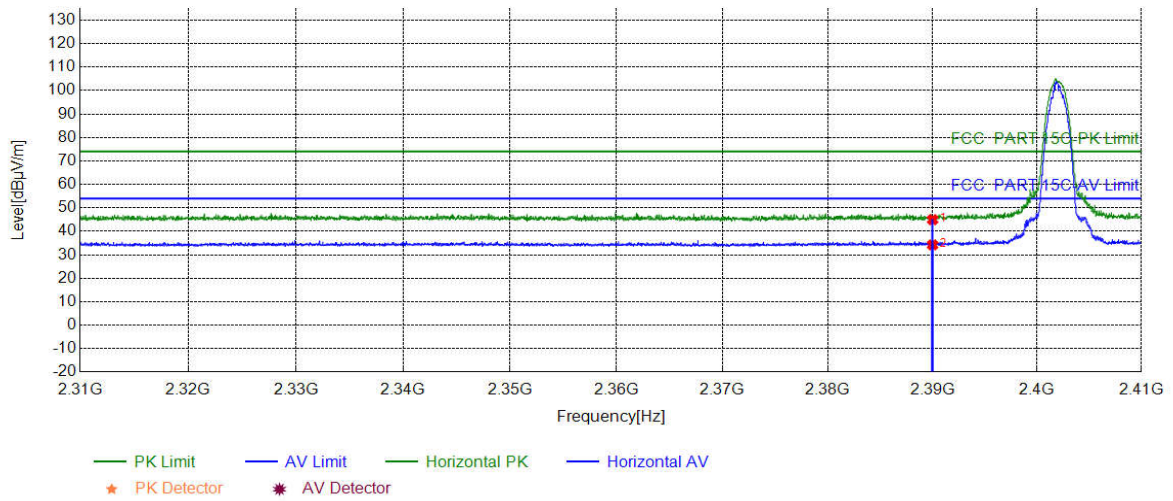
Test Graph



Suspected List									
NO	Freq. [MHz]	Factor [dB]	Reading [dBμV]	Level [dBμV/m]	Limit [dBμV/m]	Margin [dB]	Result	Polarity	Remark
1	2483.5000	6.57	40.03	46.60	74.00	27.40	PASS	Vertical	PK
2	2483.5000	6.57	28.93	35.50	54.00	18.50	PASS	Vertical	AV

Mode:	8DPSK Transmitting	Channel:	2402
Remark:			

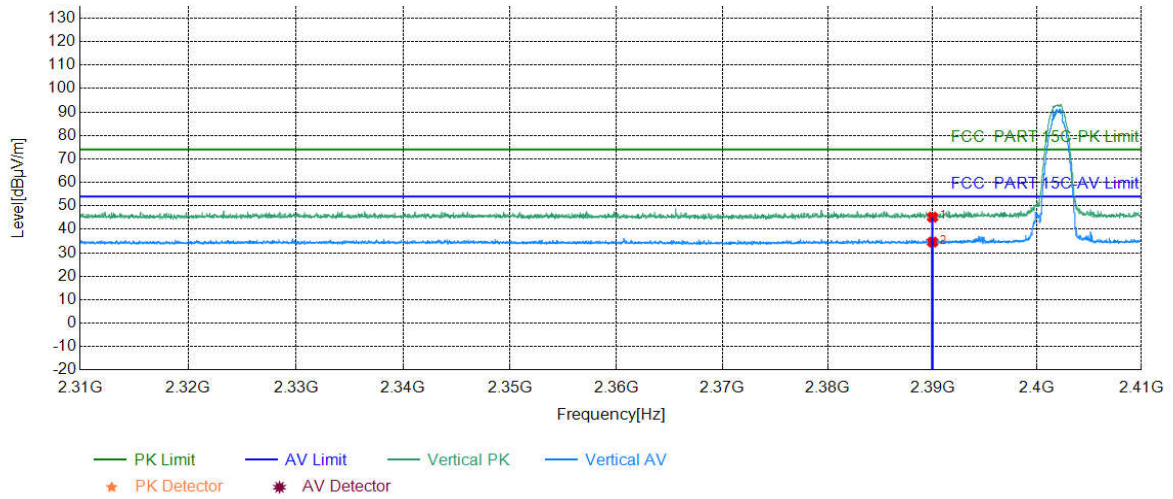
Test Graph



Suspected List										
NO	Freq. [MHz]	Factor [dB]	Reading [dBµV]	Level [dBµV/m]	Limit [dBµV/m]	Margin [dB]	Result	Polarity	Remark	
1	2390.0000	5.77	39.19	44.96	74.00	29.04	PASS	Horizontal	PK	
2	2390.0000	5.77	28.45	34.22	54.00	19.78	PASS	Horizontal	AV	

Mode:	8DPSK Transmitting	Channel:	2402
Remark:			

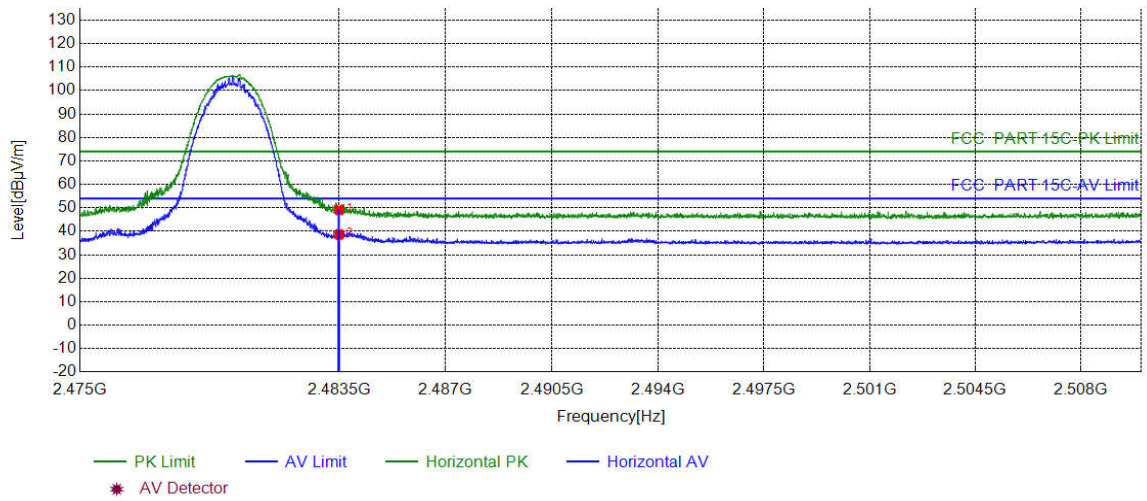
Test Graph



Suspected List									
NO	Freq. [MHz]	Factor [dB]	Reading [dBµV]	Level [dBµV/m]	Limit [dBµV/m]	Margin [dB]	Result	Polarity	Remark
1	2390.0000	5.77	39.43	45.20	74.00	28.80	PASS	Vertical	PK
2	2390.0000	5.77	28.81	34.58	54.00	19.42	PASS	Vertical	AV

Mode:	8DPSK Transmitting	Channel:	2480
Remark:			

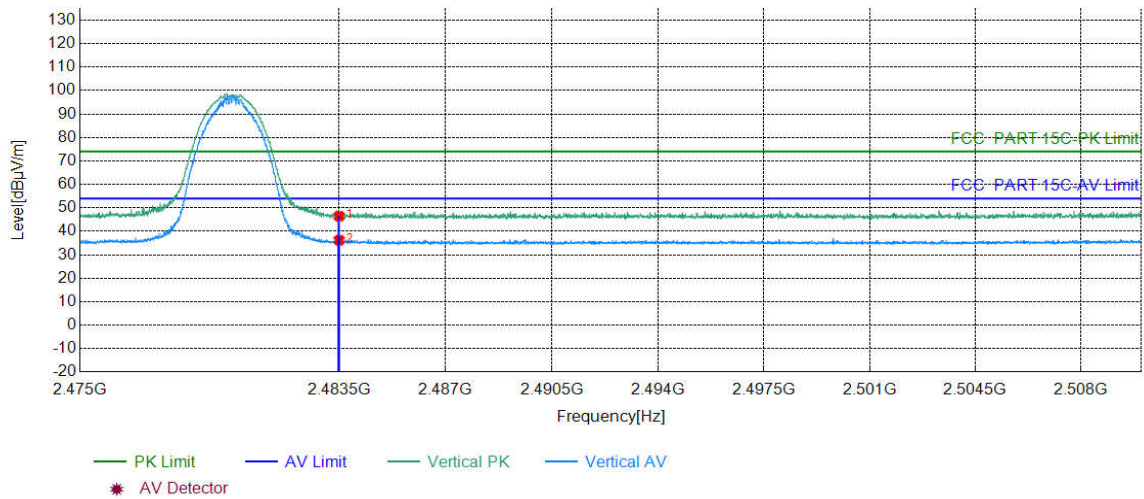
Test Graph



Suspected List									
NO	Freq. [MHz]	Factor [dB]	Reading [dBµV]	Level [dBµV/m]	Limit [dBµV/m]	Margin [dB]	Result	Polarity	Remark
1	2483.5000	6.57	42.54	49.11	74.00	24.89	PASS	Horizontal	PK
2	2483.5000	6.57	32.12	38.69	54.00	15.31	PASS	Horizontal	AV

Mode:	8DPSK Transmitting	Channel:	2480
Remark:			

Test Graph



Suspected List									
NO	Freq. [MHz]	Factor [dB]	Reading [dBµV]	Level [dBµV/m]	Limit [dBµV/m]	Margin [dB]	Result	Polarity	Remark
1	2483.5000	6.57	39.90	46.47	74.00	27.53	PASS	Vertical	PK
2	2483.5000	6.57	29.64	36.21	54.00	17.79	PASS	Vertical	AV

Note:

The field strength is calculated by adding the Antenna Factor, Cable Factor & Preamplifier. The basic equation with a sample calculation is as follows:

Final Test Level = Receiver Reading - Correct Factor

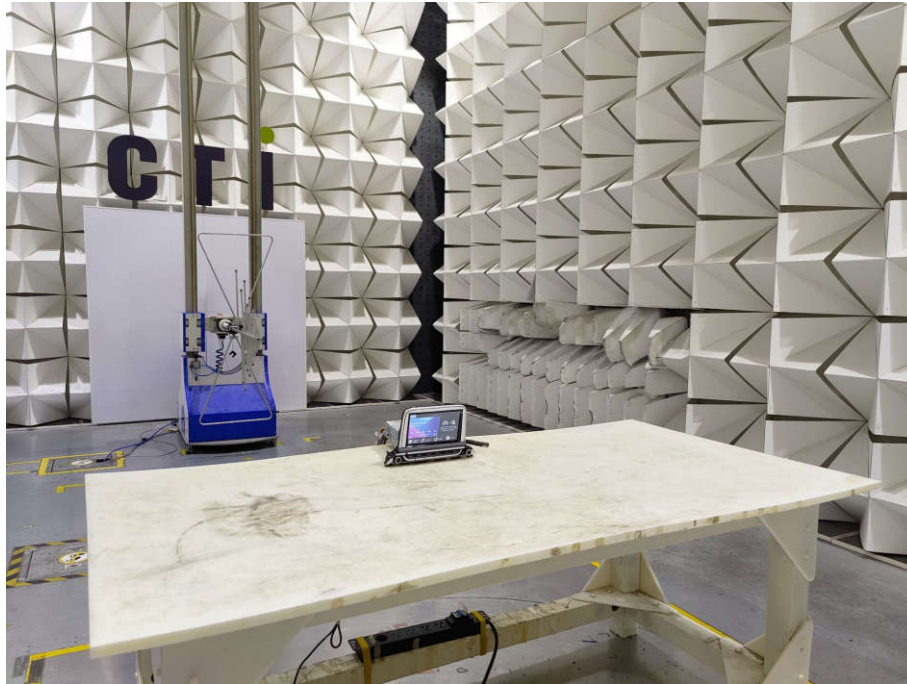
Correct Factor = Preamplifier Factor - Antenna Factor - Cable Factor

6 Appendix A

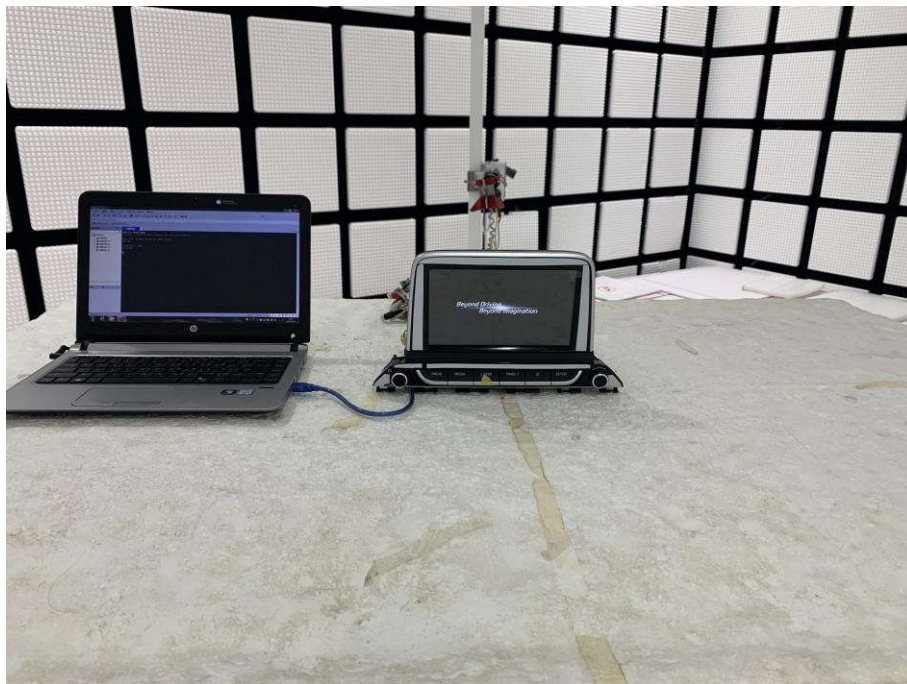
Refer to Appendix: Bluetooth Classic of EED32O80607501

7 PHOTOGRAPHS OF TEST SETUP

Test model No.:MTXMO420LBR2PE



Radiated spurious emission Test Setup-1(Below 1GHz)



Radiated spurious emission Test Setup-2(Above 1GHz)



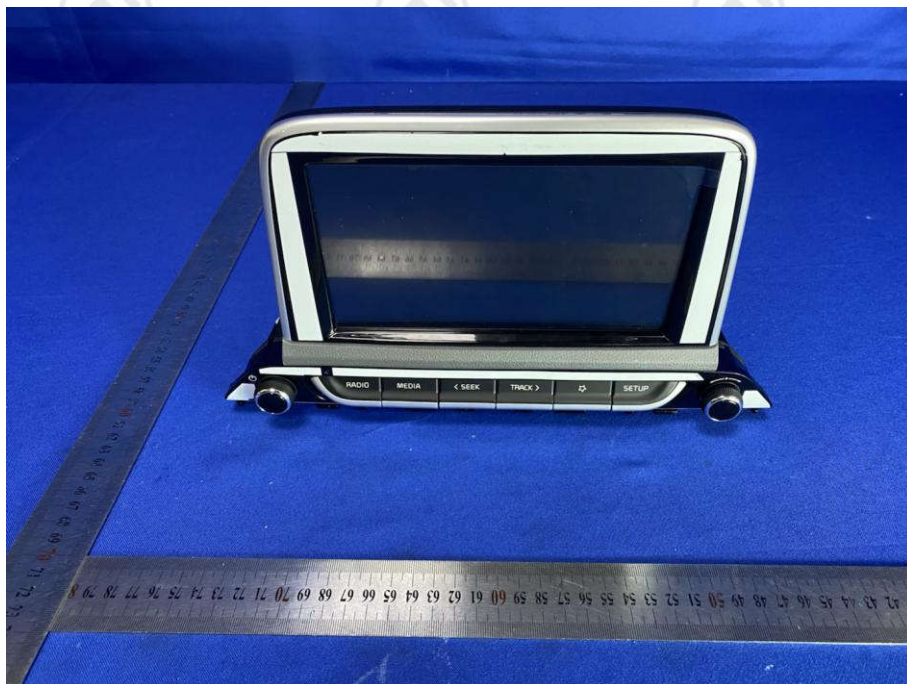
**Radiated spurious emission Test Setup-3(Above 1GHz)
There are absorbing materials under the ground.**

8 PHOTOGRAPHS OF EUT Constructional Details

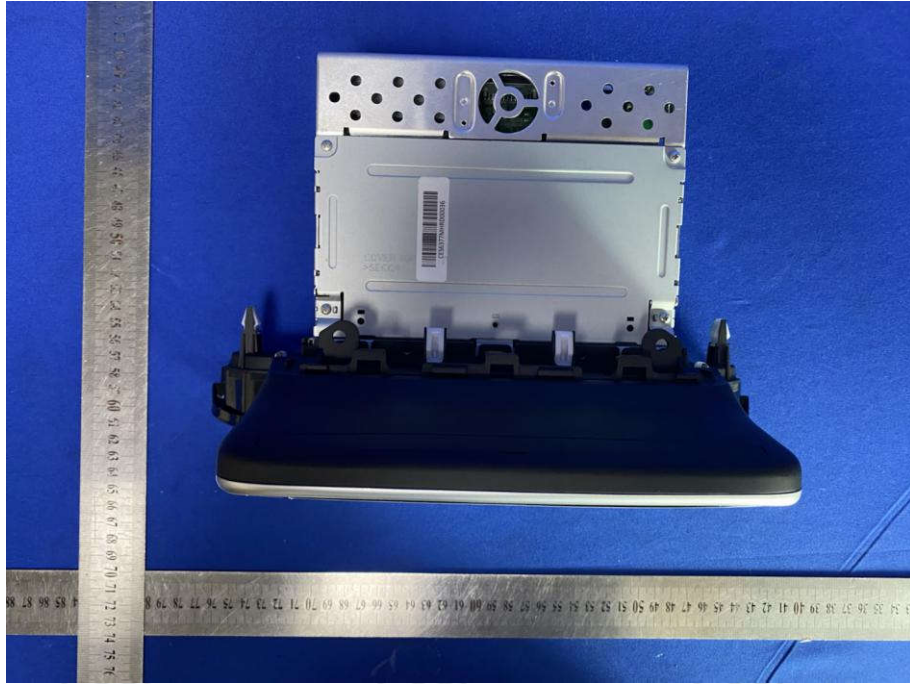
Test model No.: MTXMO420LBR2PE



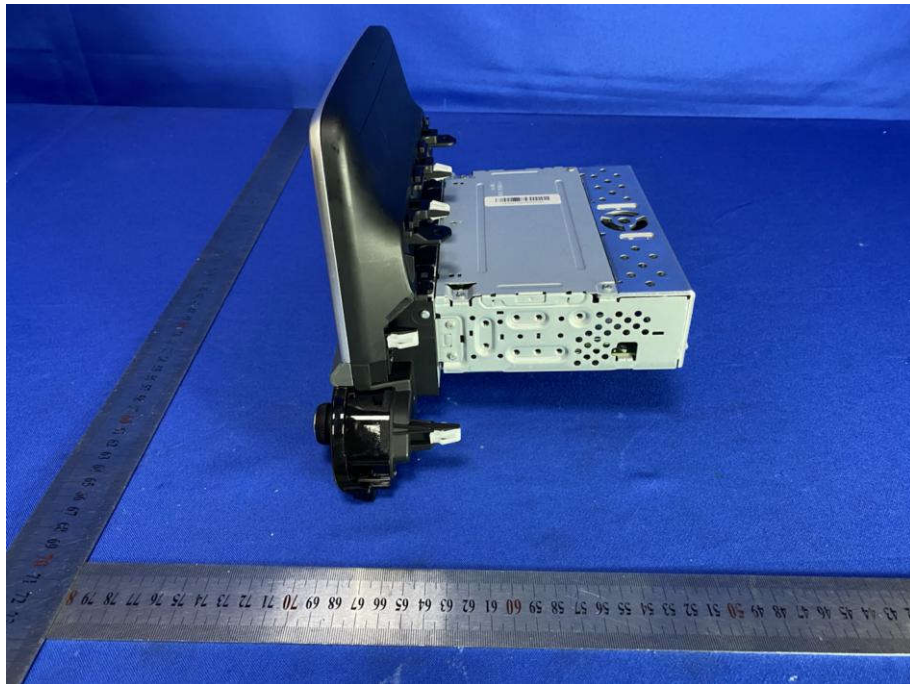
View of Product-1



View of Product-2



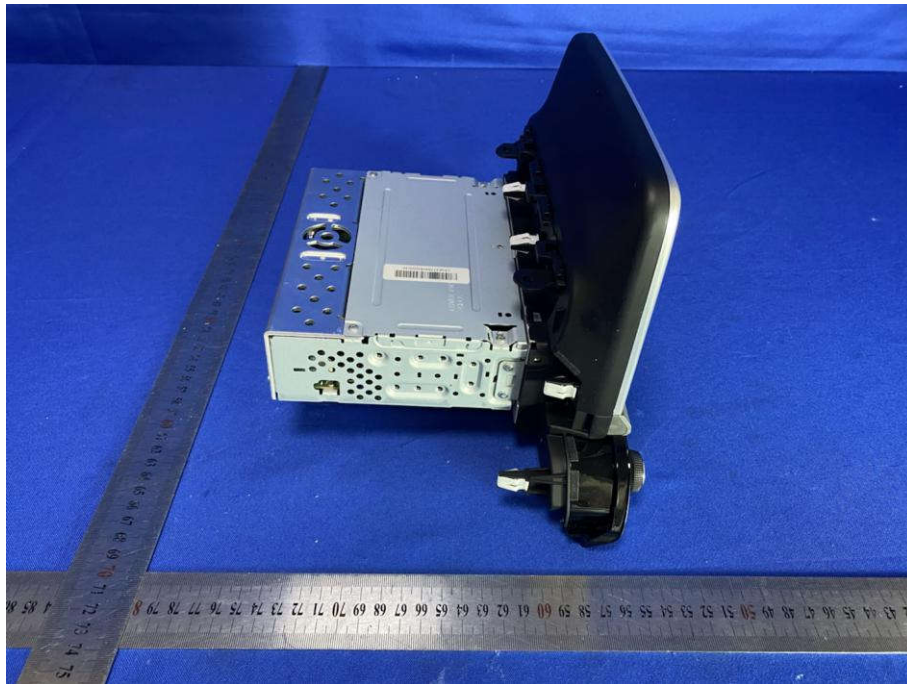
View of Product-3



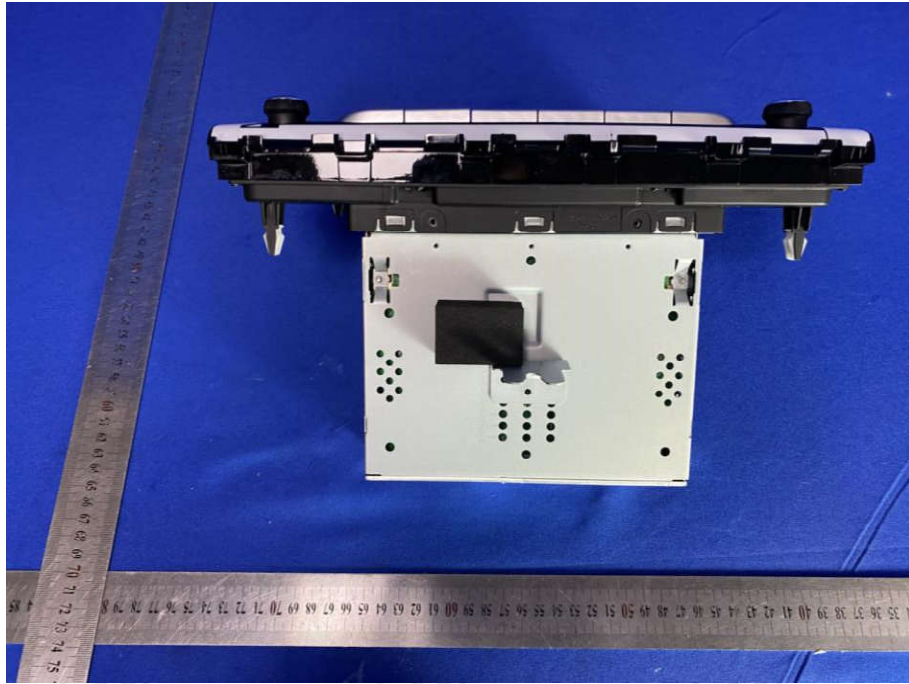
View of Product-4



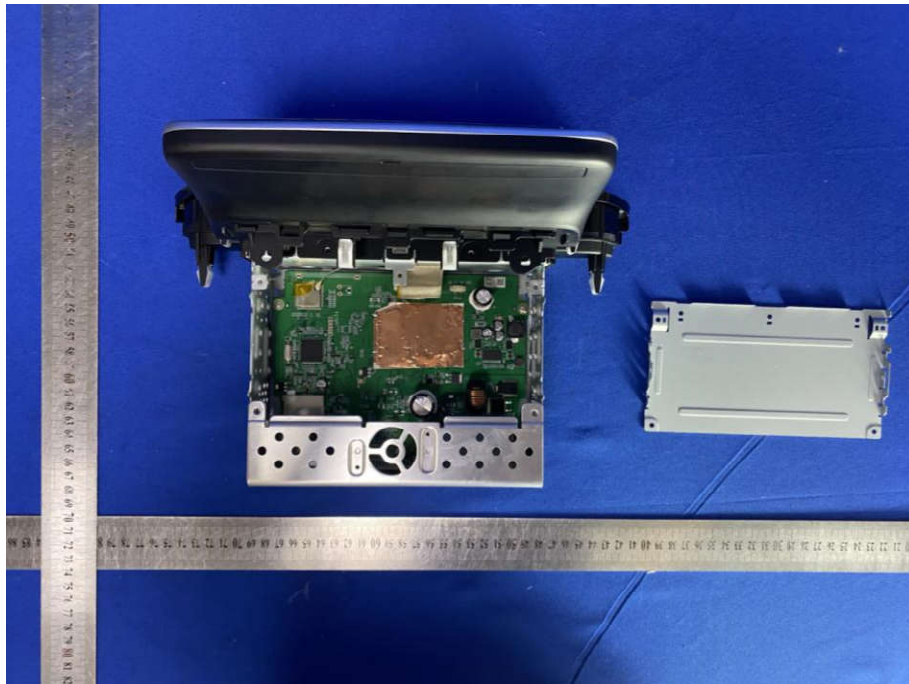
View of Product-5



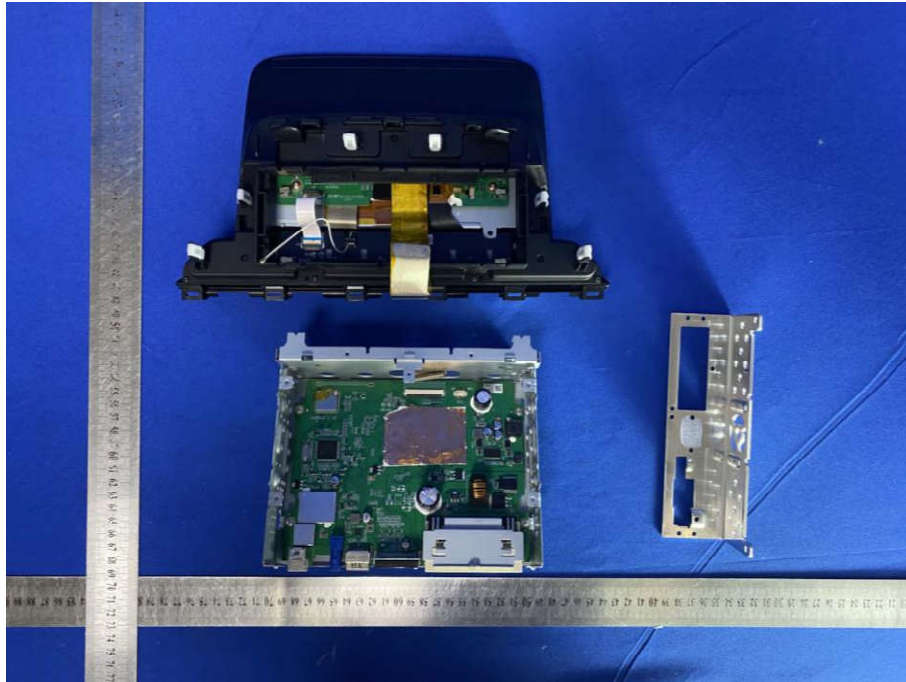
View of Product-6



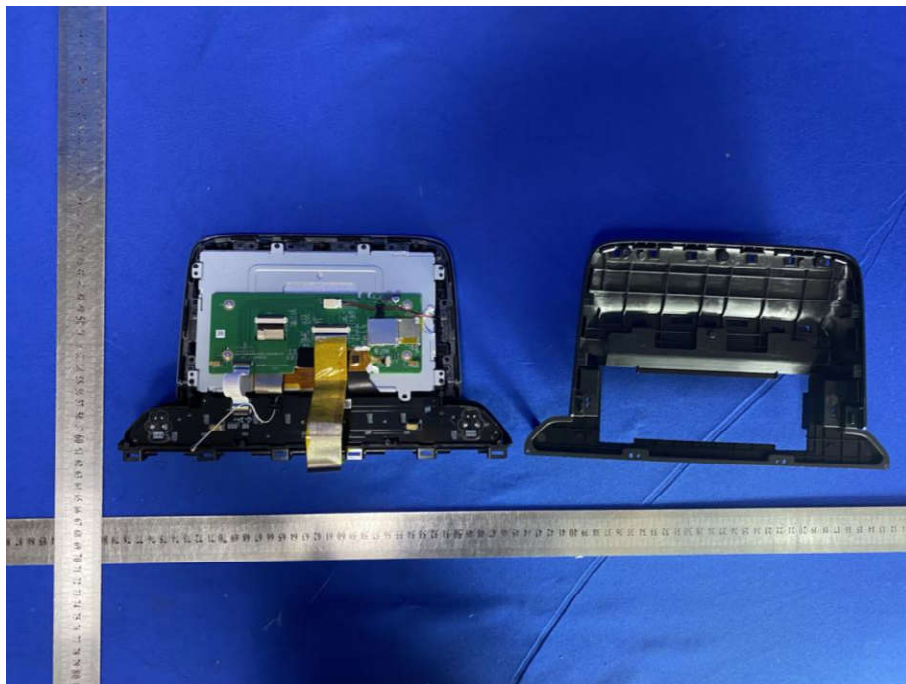
View of Product-7



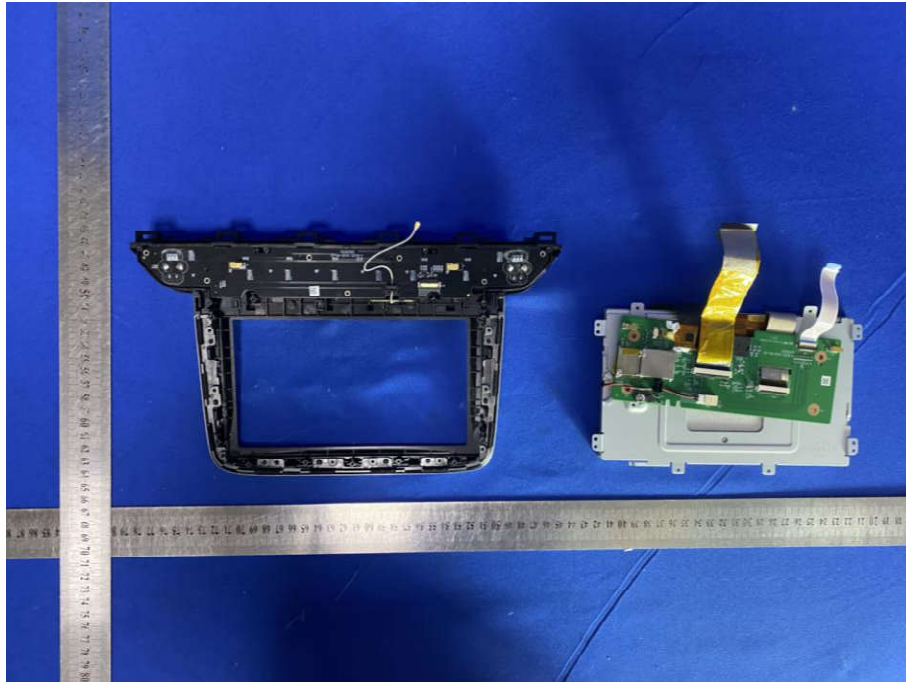
View of Product-8



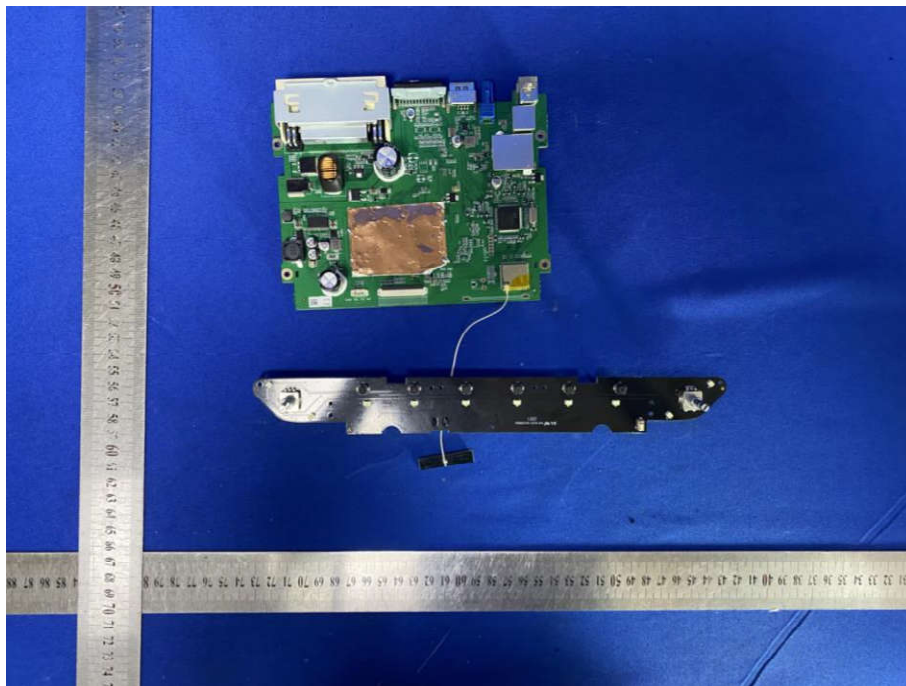
View of Product-9



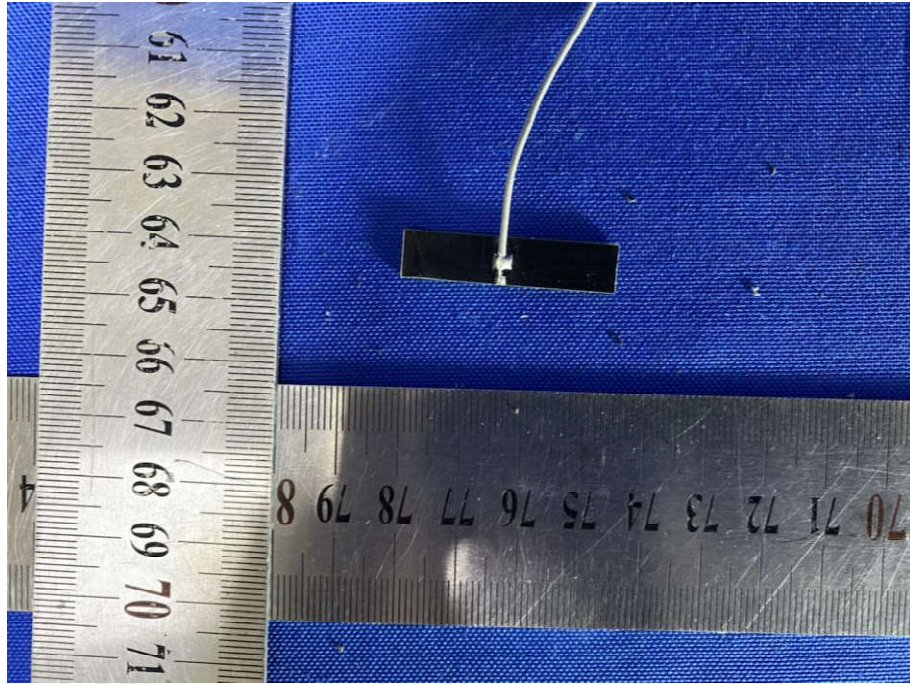
View of Product-10



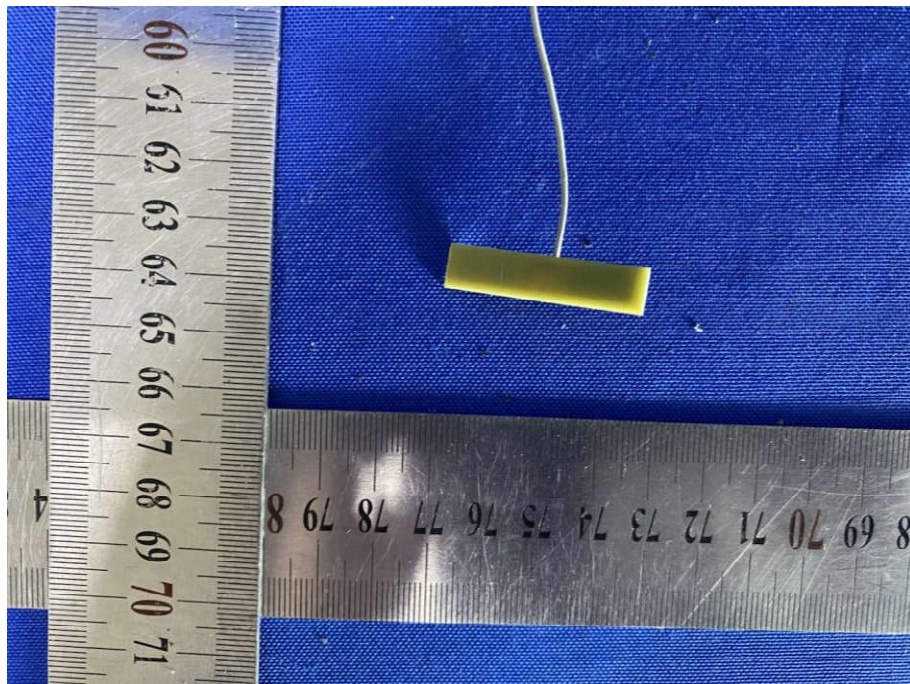
View of Product-11



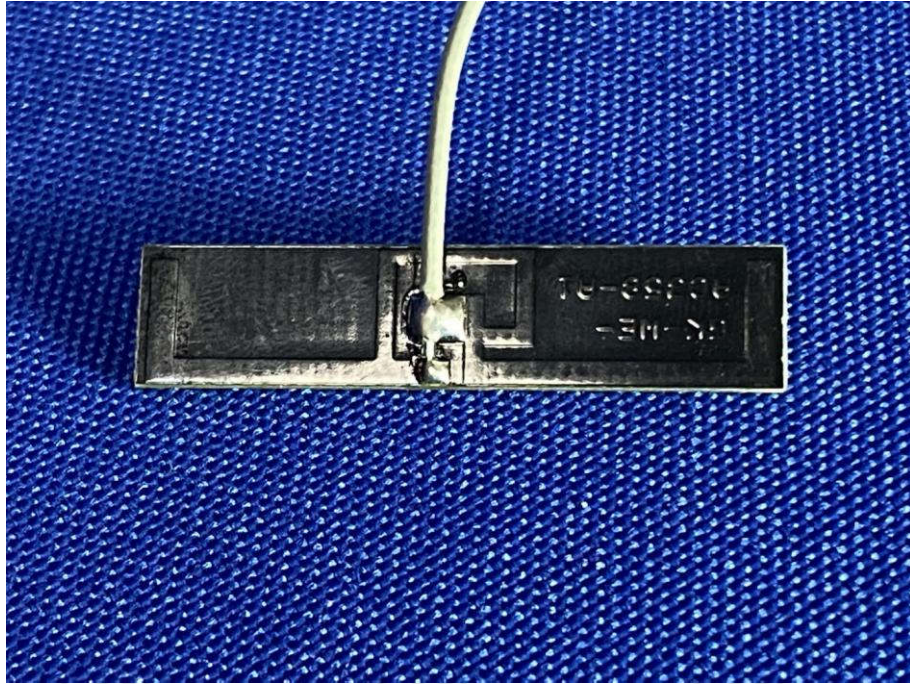
View of Product-12



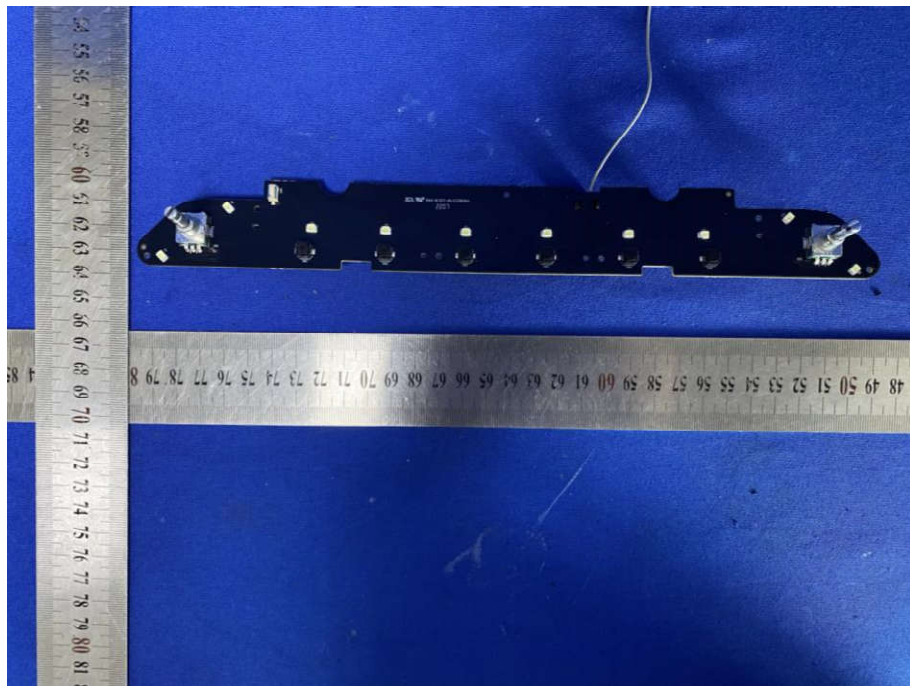
View of Product-13



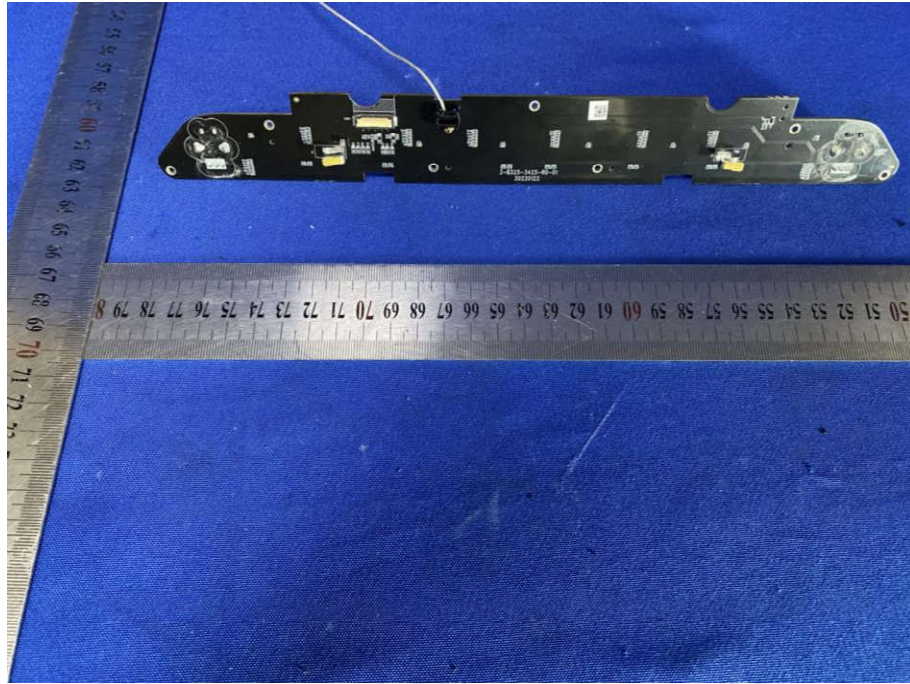
View of Product-14



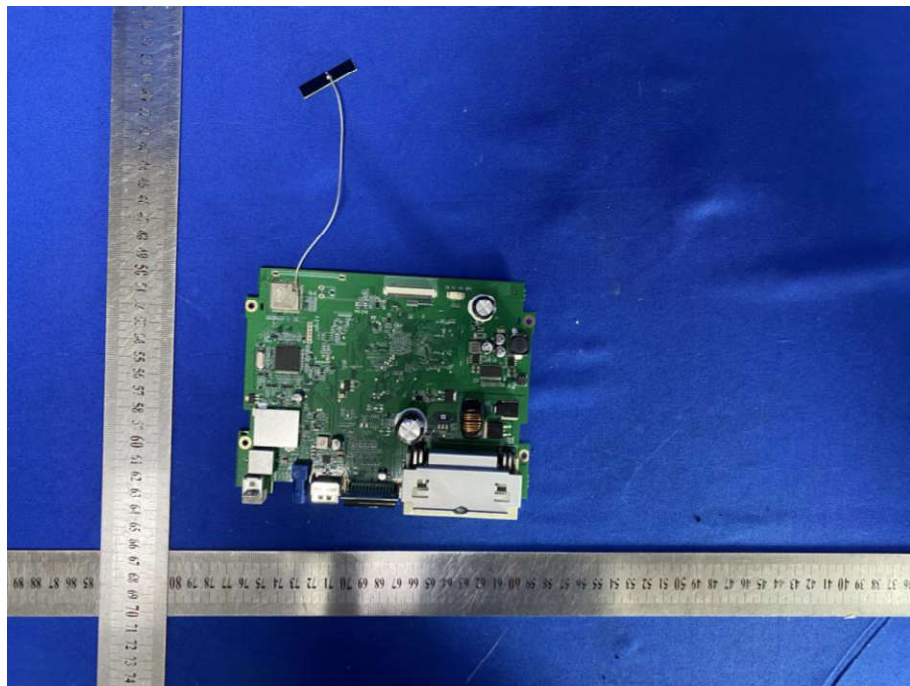
View of Product-15



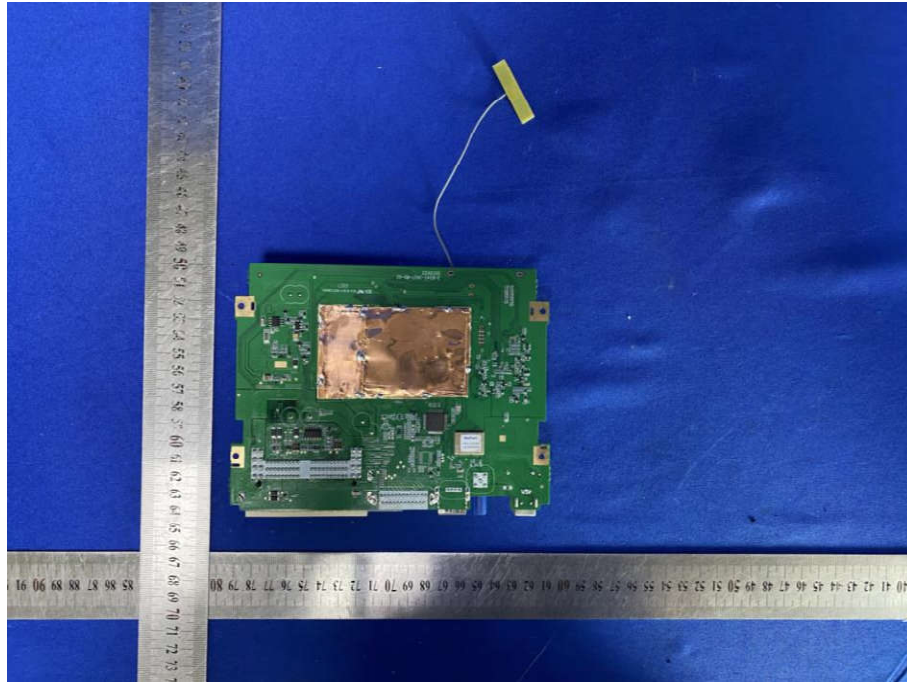
View of Product-16



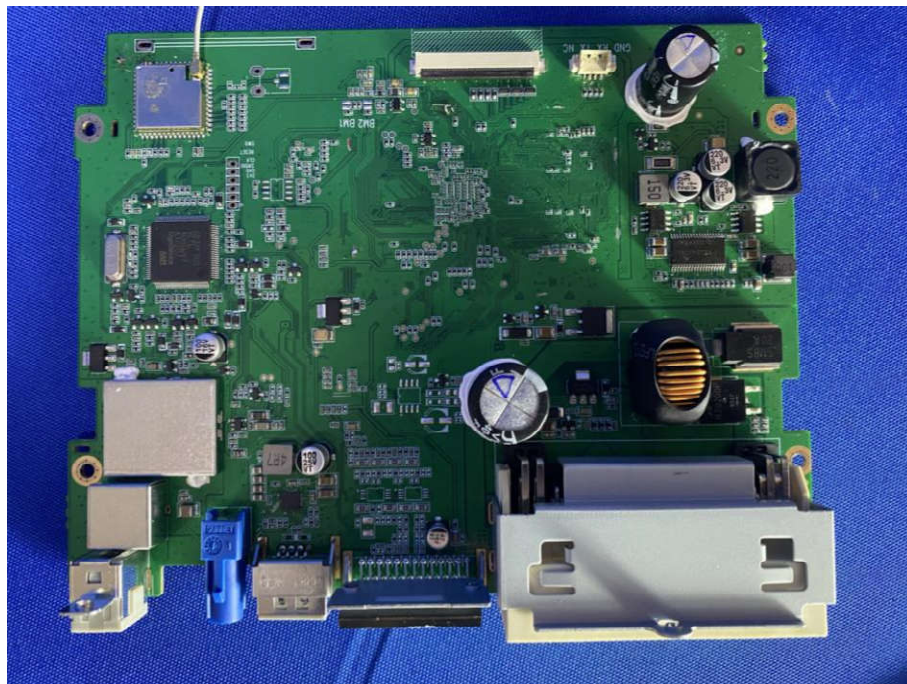
View of Product-17



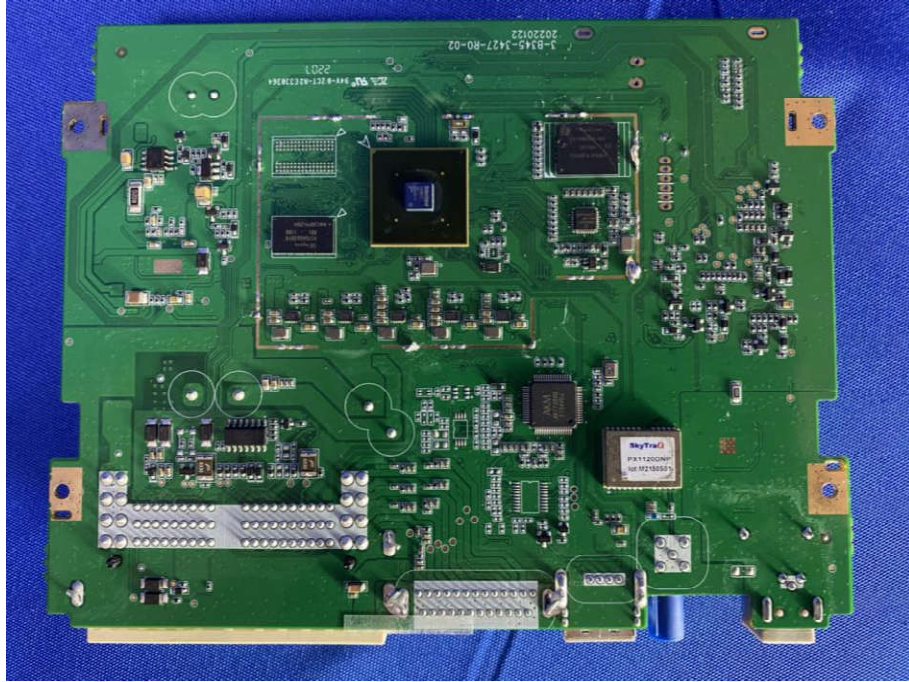
View of Product-18



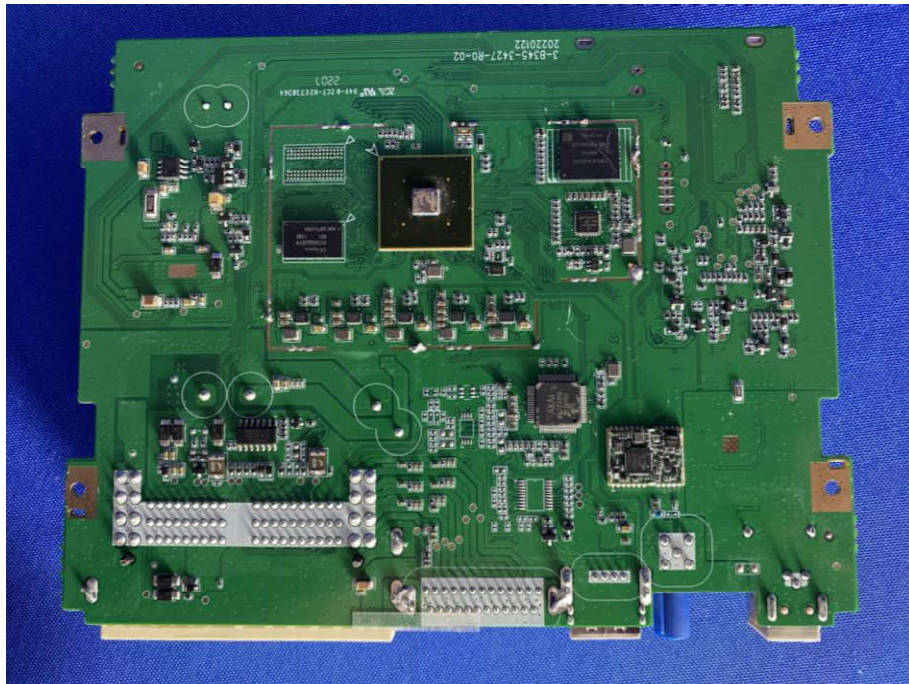
View of Product-19



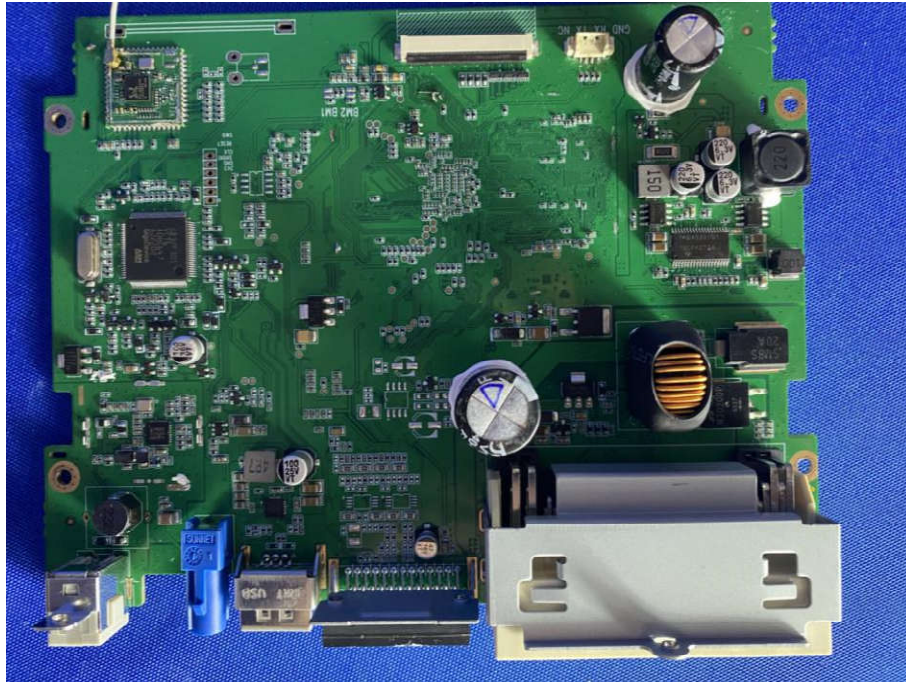
View of Product-20



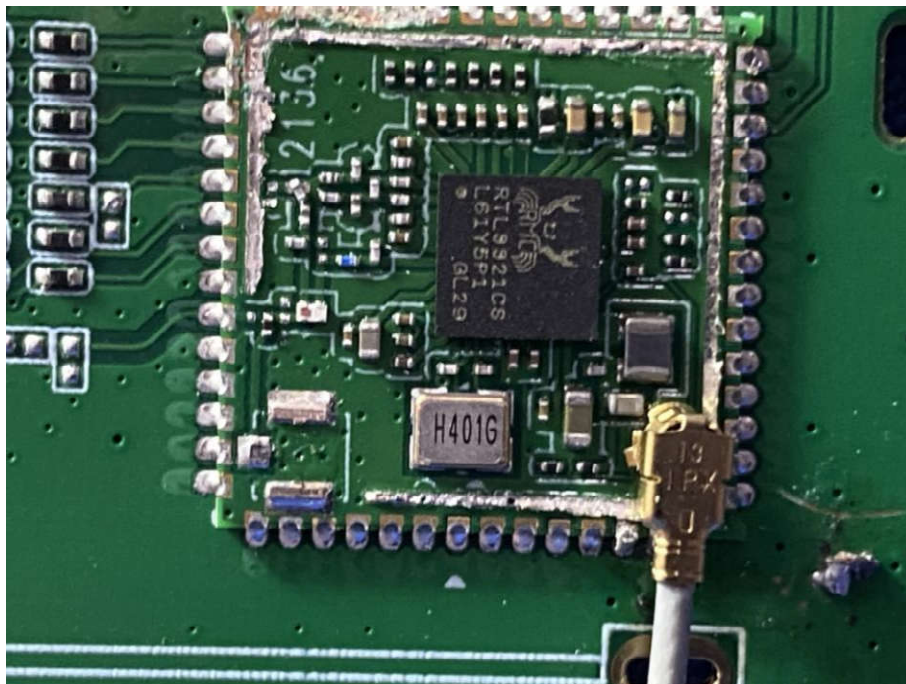
View of Product-21



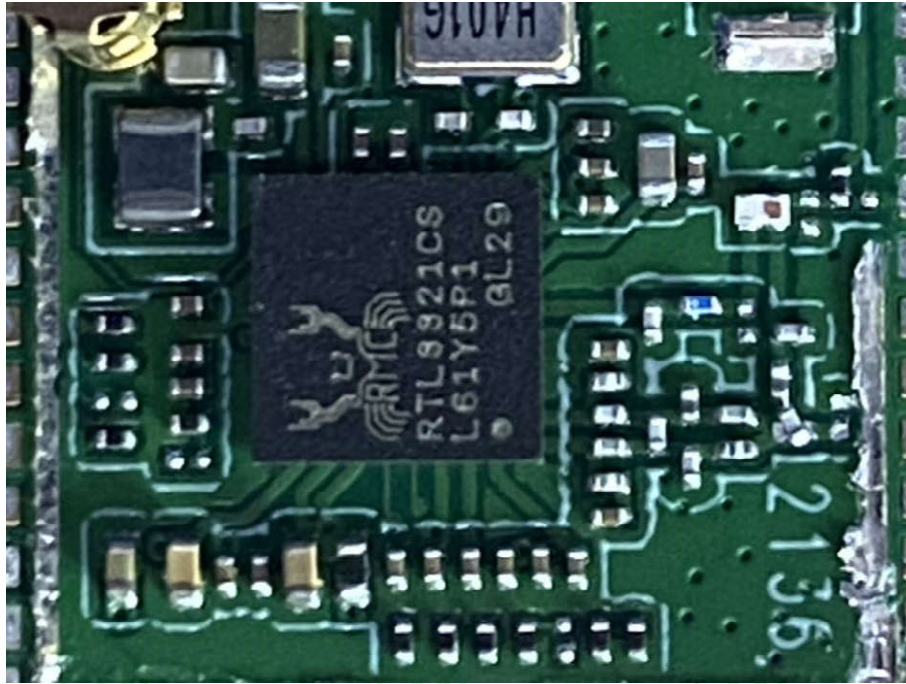
View of Product-22



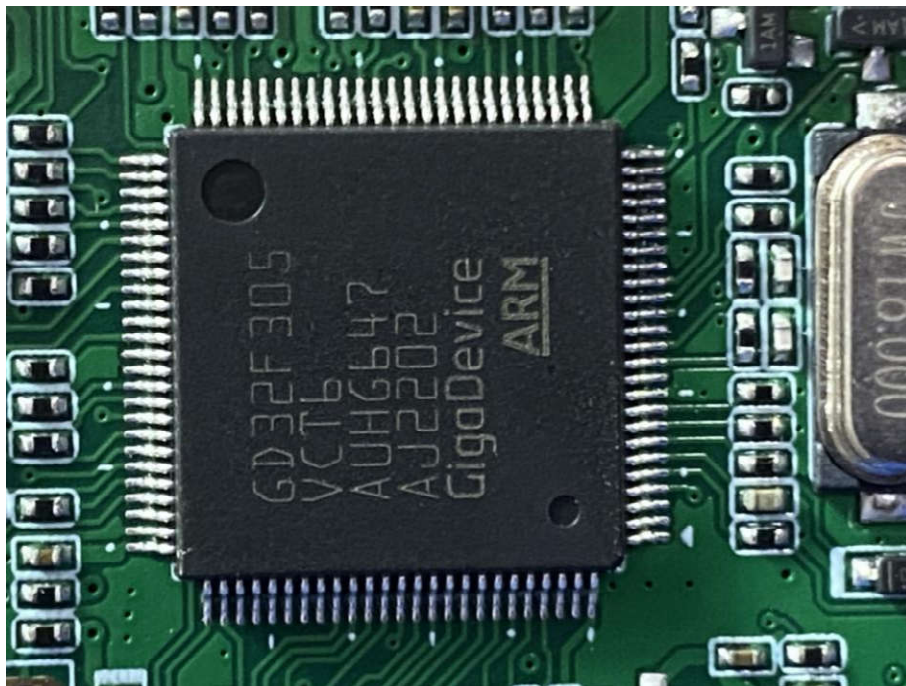
View of Product-23



View of Product-24



View of Product-25



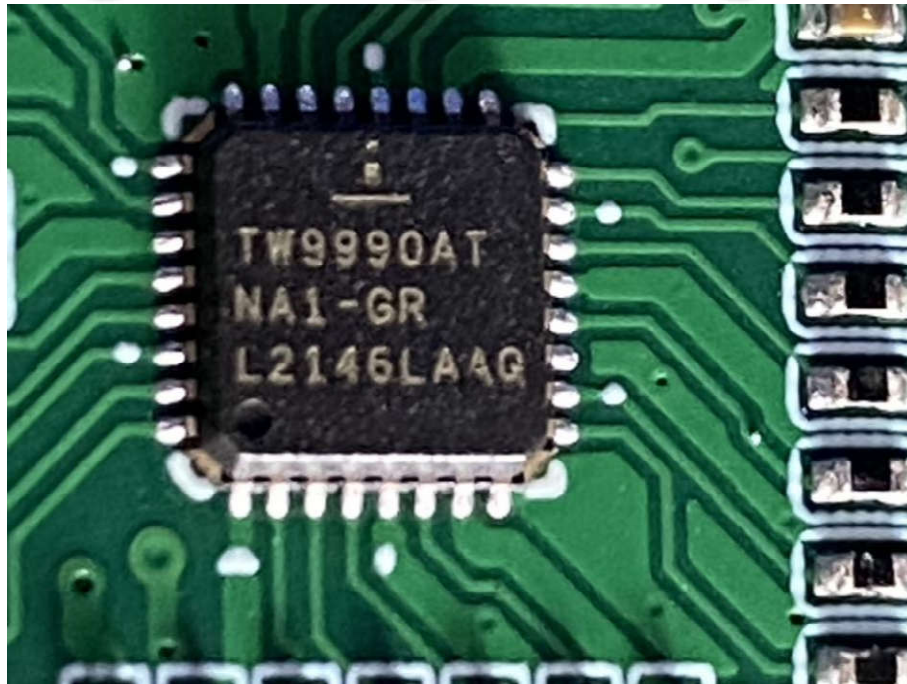
View of Product-26



View of Product-27



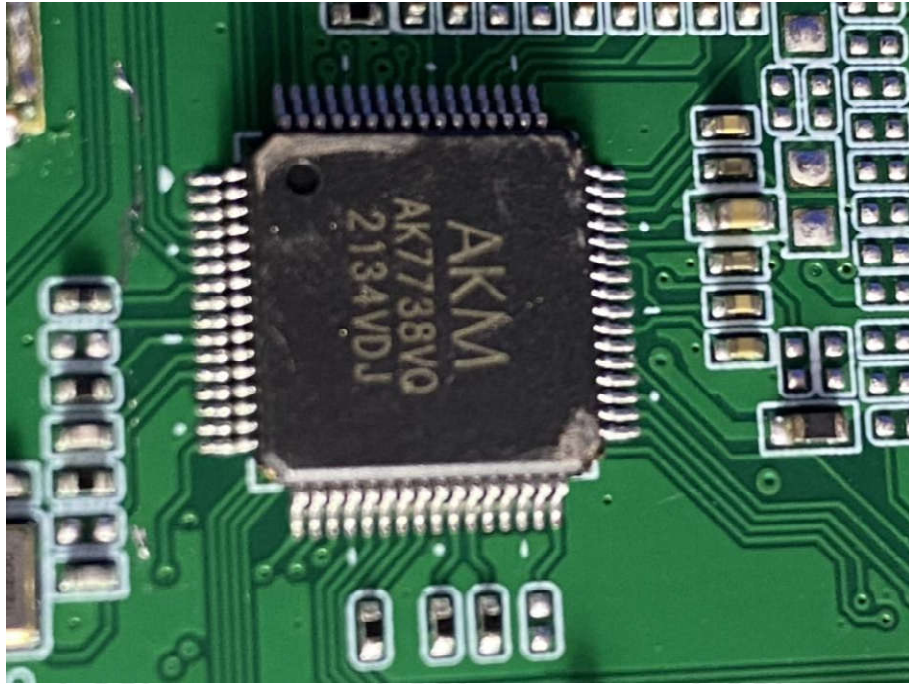
View of Product-28



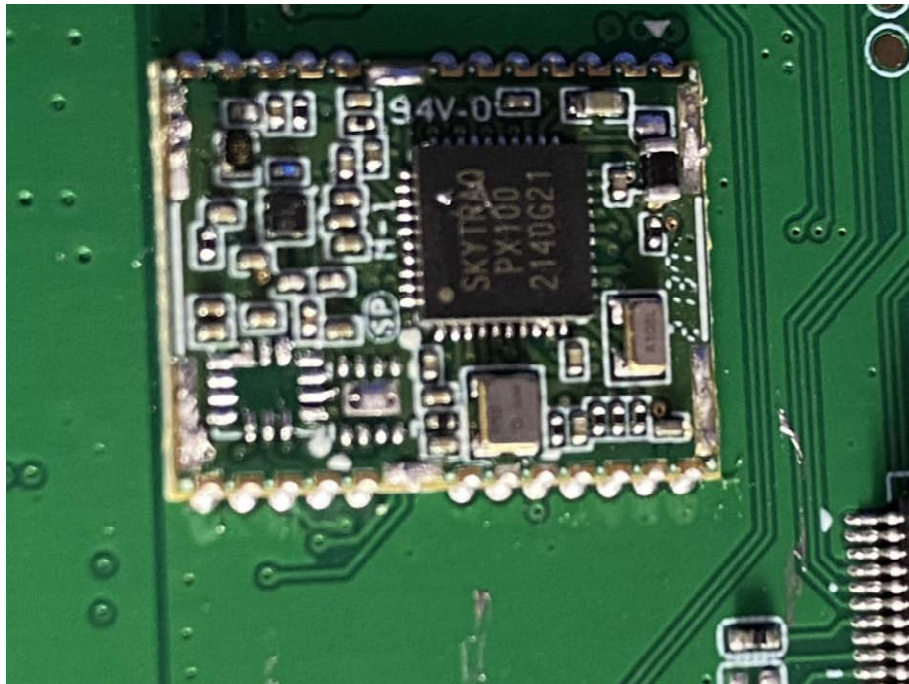
View of Product-29



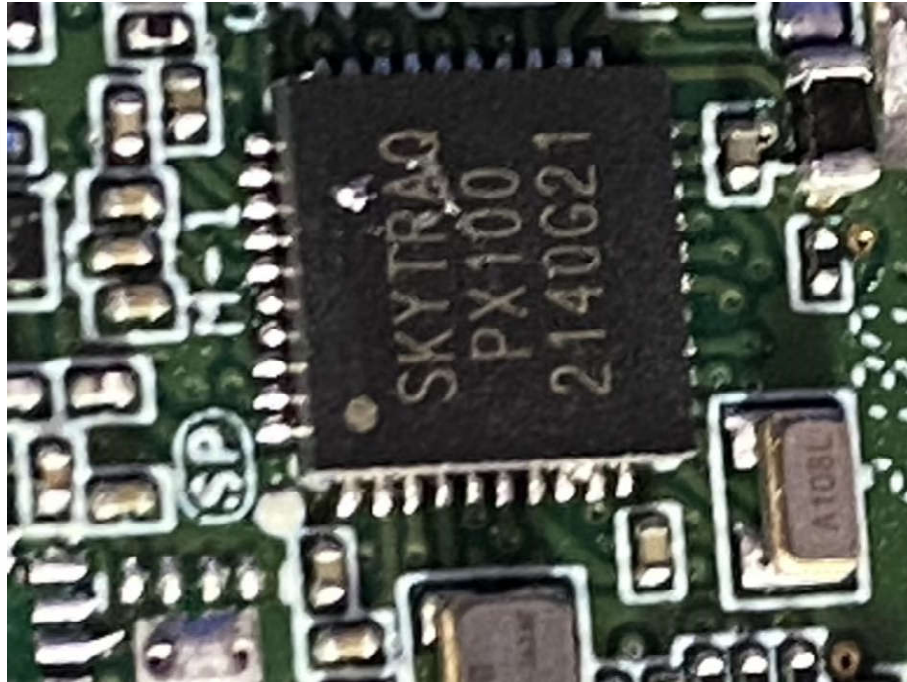
View of Product-30



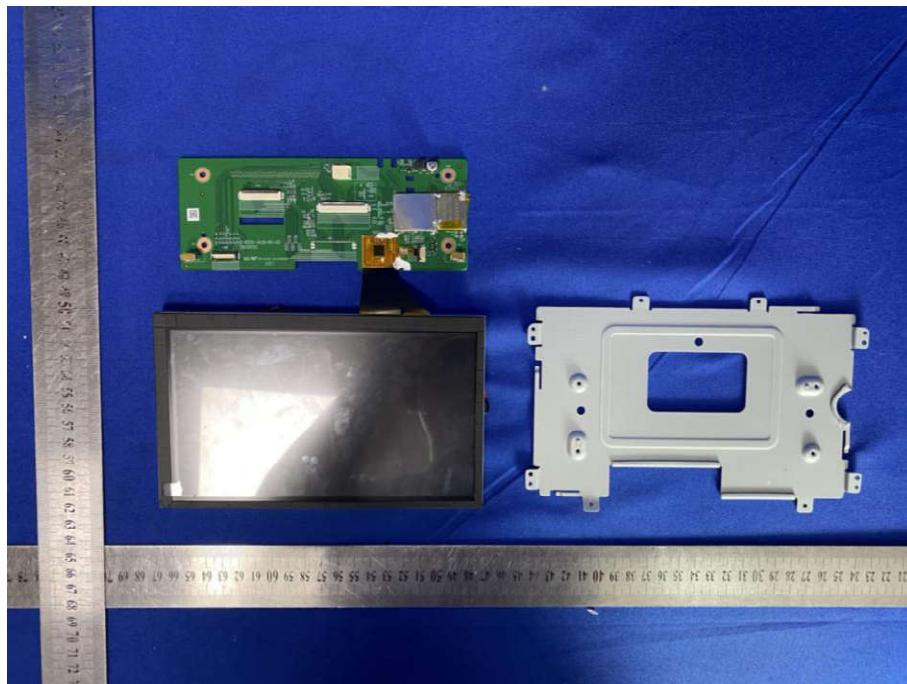
View of Product-31



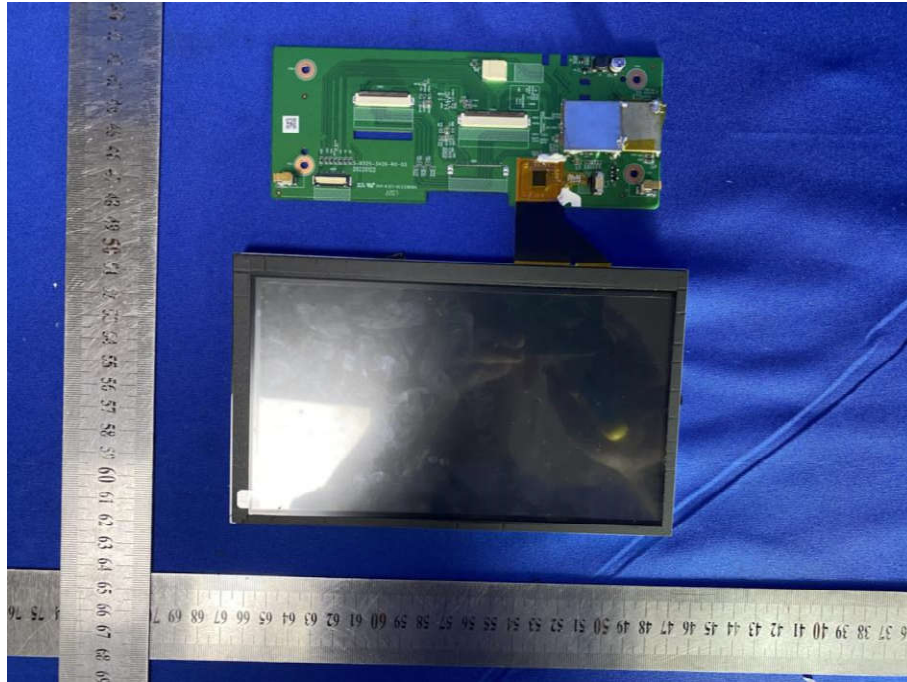
View of Product-32



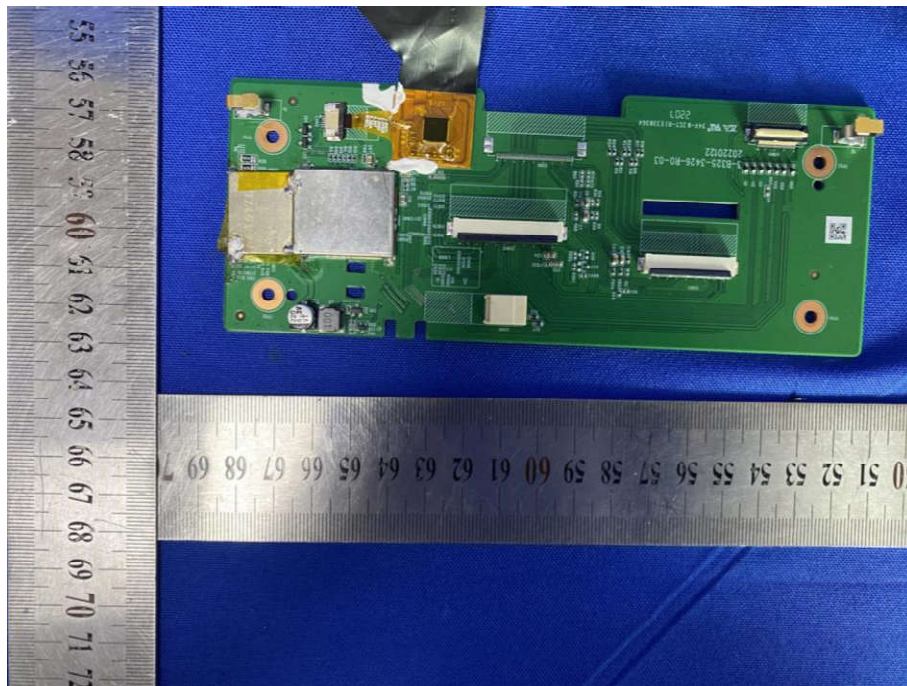
View of Product-33



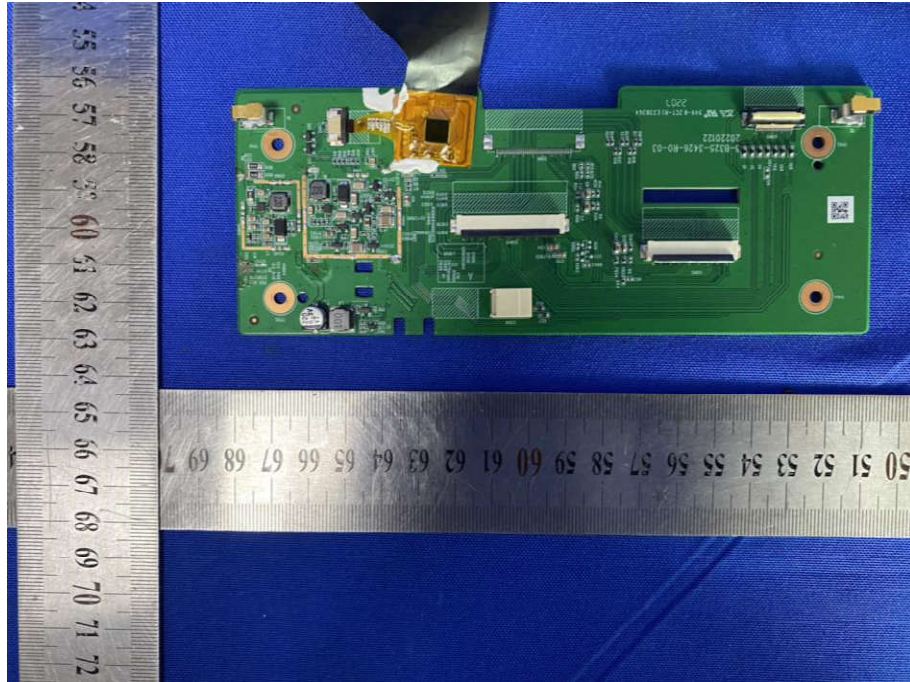
View of Product-34



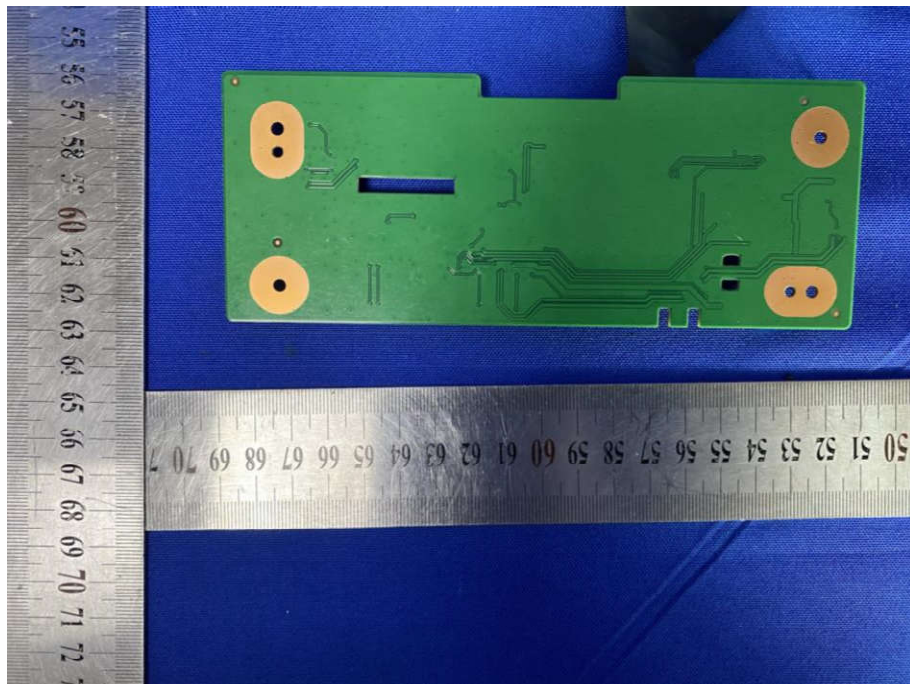
View of Product-35



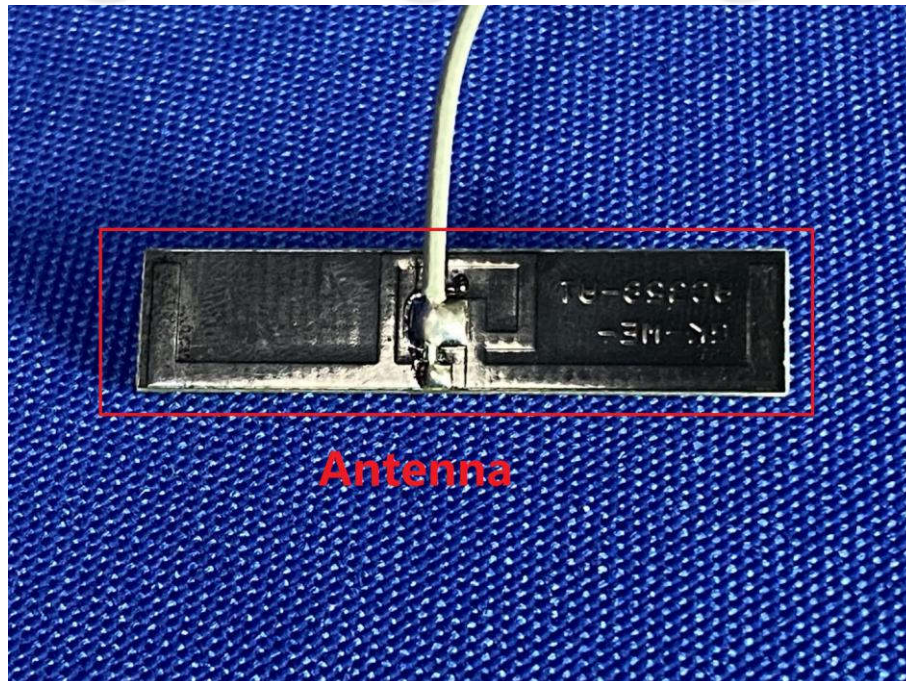
View of Product-36



View of Product-37



View of Product-38



View of Product-39

The test report is effective only with both signature and specialized stamp, The result(s) shown in this report refer only to the sample(s) tested. Without written approval of CTI, this report can't be reproduced except in full.

*** End of Report ***