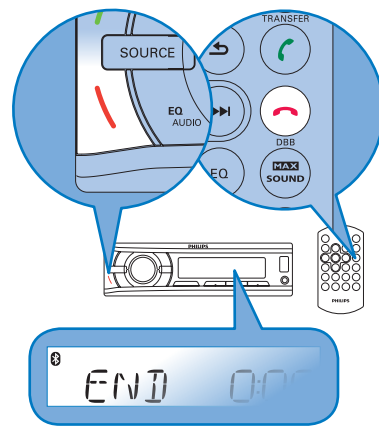
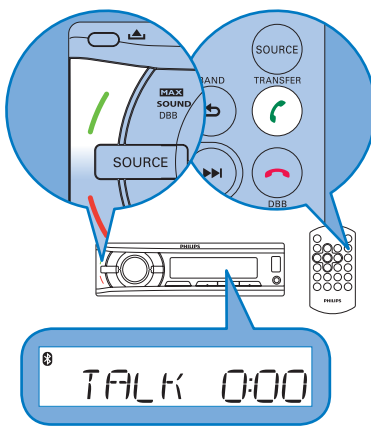


Radio

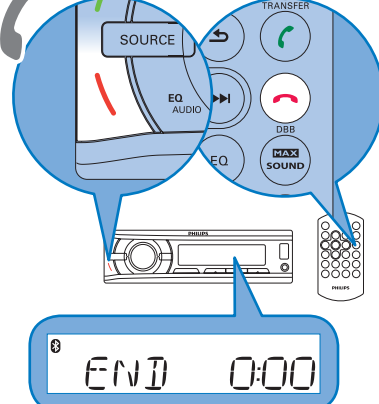
End a call



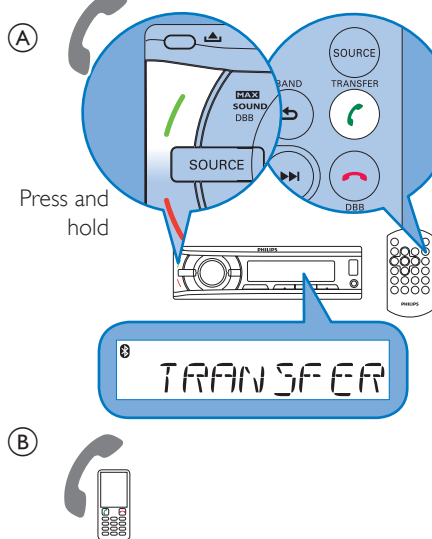
Answer a call



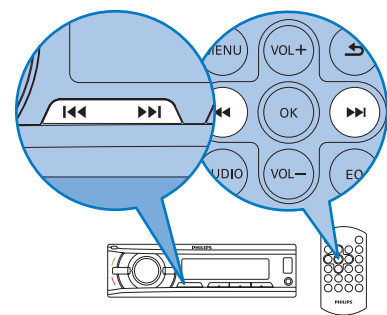
Reject incoming call



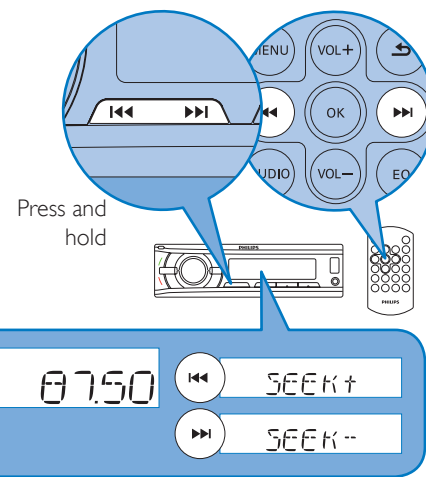
Transfer a call



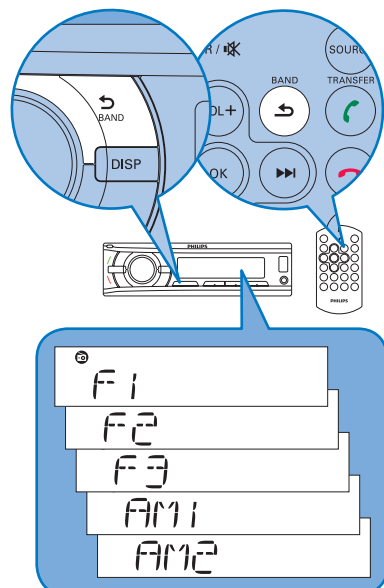
Manual tune



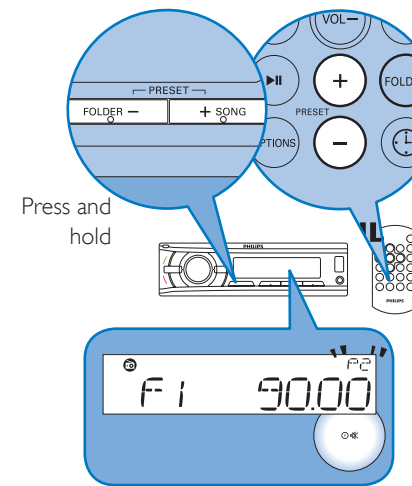
Auto tune



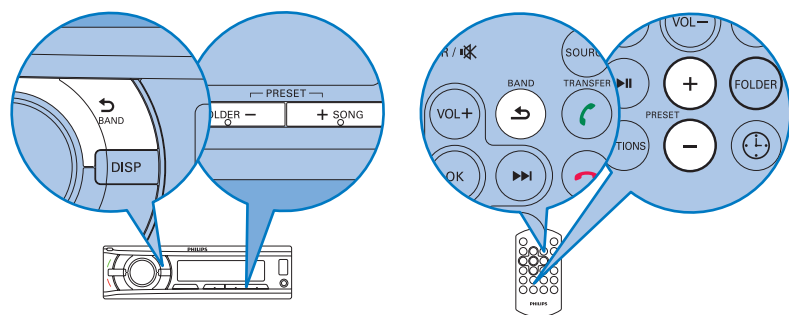
Select band



Preset station

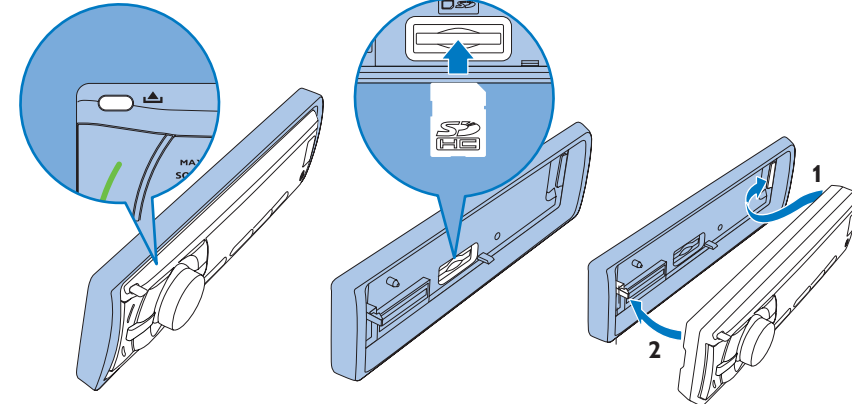


Tune to a radio station

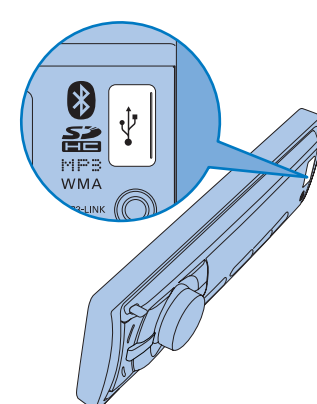


SD card / USB

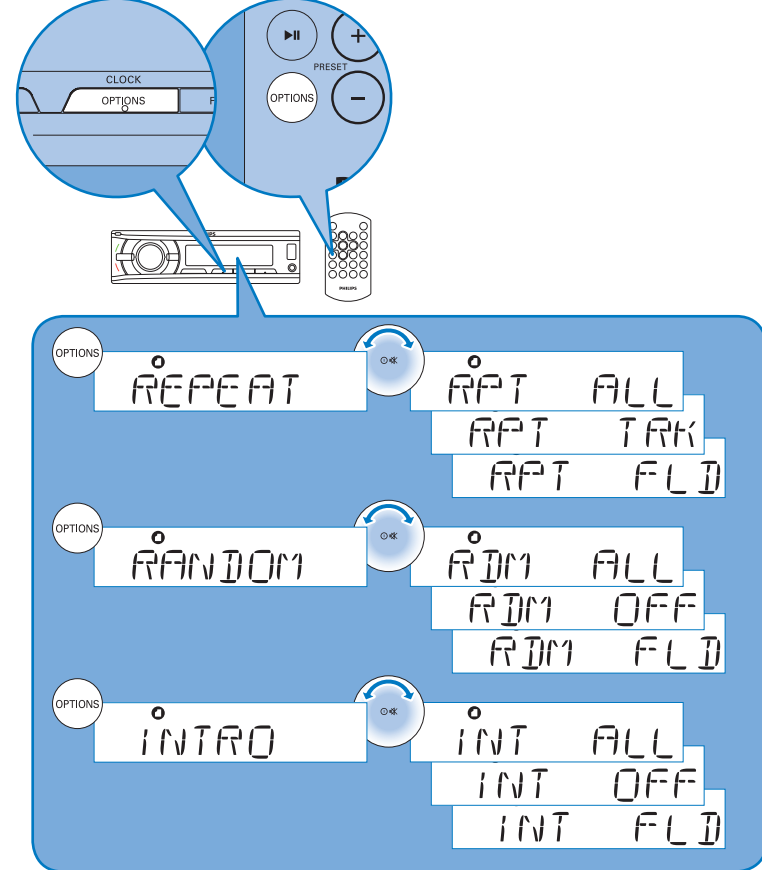
Insert SD card



Insert USB device

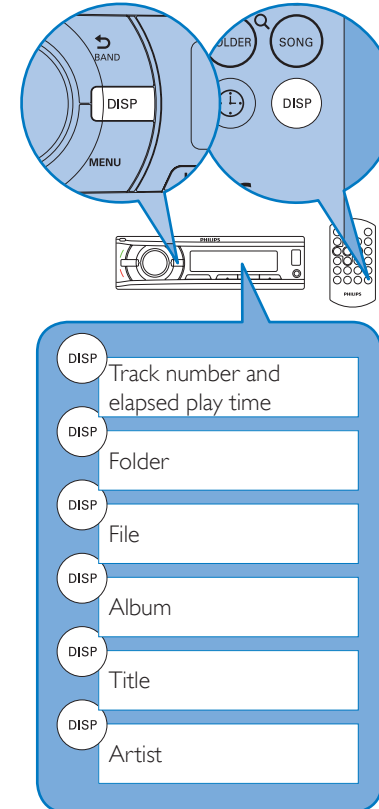


Play option

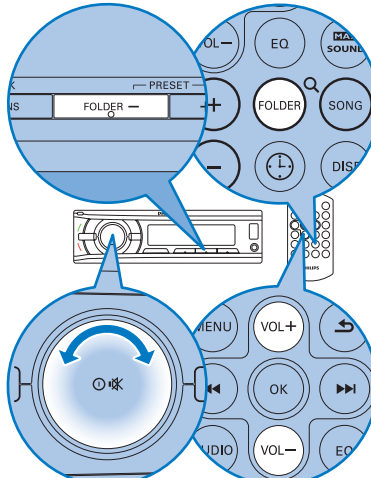


MP3-Link

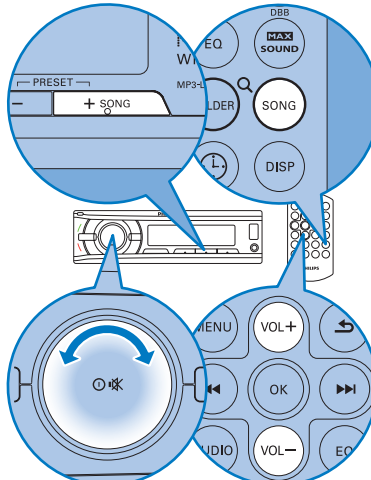
View play information



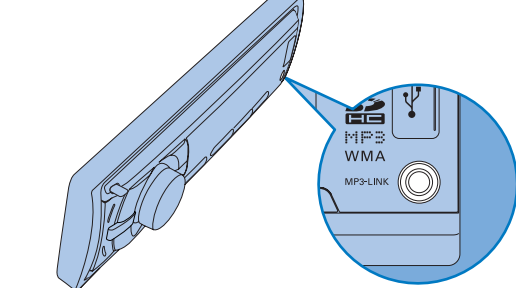
Folder search



Song search



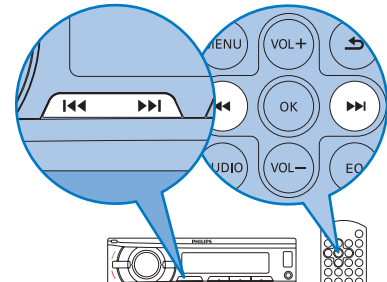
Listen to other source



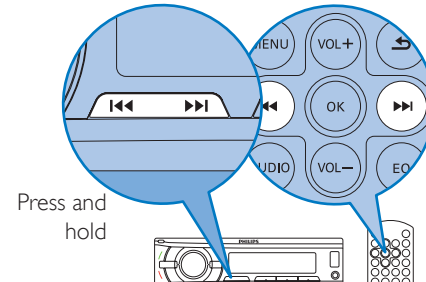
SD card / USB

Bluetooth audio

Skip track



Search within a track



Product information

Note Product information is subject to change without prior notice.	
Power supply	12VDC (11V-16V), negative ground
Fuse	15A
Suitable speaker impedance	4 - 8 Ω
Maximum power output	45 W x 4 channels
Continuous power output	22 W x 4 RMS (4Ω 10% T.H.D.)
Pre-Amp output voltage	2.5 V
Aux-in level	≥500 mV
Dimensions (W x H x D)	188 x 58 x 140 mm
Weight	0.8 kg

Radio	
Frequency range - FM	87.5 - 108.0 MHz (100kHz per step in auto search and 50kHz per step in manual search)
Frequency range - AM(MW)	522 - 1620 KHz (9 kHz)
Usable sensitivity - FM	530 - 1710 kHz (10 kHz)
Usable sensitivity - AM(MW) (S/N= 20 dB)	8 μV
Usable sensitivity - FM	30 μV
Bluetooth	
Output power	0 dBm (Class 2)
Frequency band	2.4000 GHz - 2.4835 GHz ISM Band
Range	3 meters(free space)
Standard	Bluetooth 2.0 specification

Compatible USB devices

- USB flash memory: USB 1.1 host with interface reading all speed support (1.1, 2.0)
- USB flash players: USB 1.1 host with interface reading all speed support (1.1, 2.0)
- memory cards (SD / SDHC)

Supported formats

- USB or memory file format: FAT16, FAT32
- MP3 bit rate (data rate): 32-320 Kbps and variable bit rate
- WMA V4, V7, V8, V9 (L1, L2)
- Maximum title number: 512 (depending on file name length)
- Maximum album number: 255
- Supported sampling frequencies: 2 kHz, 44.1 kHz, 48 kHz
- Supported Bit-rates: 2-256 (kbps), variable bit rates
- Directory nesting up to a maximum of 8 levels
- Number of albums/ folders: USB maximum 199
- Number of tracks/titles: maximum 999
- ID3 tag v2.0 or later
- File name in Unicode UTF8 (maximum length 64 bytes)

Unsupported formats

- Empty albums: an empty album is an album that does not contain MP3/WMA files, and is not be shown in the display.
- Unsupported file formats are skipped. For example, Word documents (.doc) or MP3 files with extension .dlf are ignored and not played.
- AAC, WAV, PCM audio files
- DRM protected WMA files (.wav, .m4a, .m4p, .mp4, .aac)
- WMA files in Lossless format

Troubleshooting

- Caution**
Never remove the casing of this apparatus.

To keep the warranty valid, never try to repair the system yourself. If you encounter problems when using this apparatus, check the following points before requesting service. If the problem remains unsolved, go to the Philips web site (www.philips.com/support). When you contact Philips, ensure that your apparatus is nearby and the model number and serial number are available.

No power or no sound

- Car engine is not on. Turn the car engine on.
- Cable is not correctly connected. Check connections.
- Fuse is burnt. Replace fuse.
- Volume is too low. Adjust volume.
- If the above solutions cannot help, press the RESET button.
- Ensure that the track played is of a compatible format.

Noise in broadcasts

- Signals are too weak. Select other stations with stronger signals.
- Check the connection of the car antenna.
- Change broadcast from Stereo to mono.

Preset stations lost

- Battery cable is not correctly connected. Connect the battery cable to the terminal that is always live.

Display show ERR-1

- The disc, USB or SD device cannot be read in two minutes.

Display show ERR-3

- USB/SD data error.

Display show ERR-5

- Communication error or component is damaged.

About Bluetooth device

Cannot pair the Bluetooth enabled device with the car audio system.

- The device does not support the profiles required for the system.
- The Bluetooth function of the device is not enabled. Refer to the user manual of the device for how to enable the function.

The audio quality is poor after connection with a Bluetooth-enabled device.

- The Bluetooth reception is poor. Move the device closer to the car audio system or remove any obstacle between the device and the system.

Music playback is unavailable on the system even after successful Bluetooth connection.

- The device cannot be used with the system to play music.

The paired mobile phone connects and disconnects constantly.

- The Bluetooth reception is poor. Move the mobile phone closer to the car audio system or remove any obstacle between the mobile phone and the system.
- Some mobile phones may connect and disconnect constantly when you make or end calls. This does not indicate any malfunction of the system.
- For some mobile phones, the Bluetooth connection may be deactivated automatically as a power-saving feature.
- This does not indicate any malfunction of the system.

Important

Safety

- Read and understand all instructions before you use your apparatus. If damage is caused by failure to follow instructions, the warranty does not apply.

- This apparatus is designed for negative ground (earth) 12 V DC operation only.
- To ensure safe driving, adjust the volume to a safe and comfortable level.
- Improper fuses can cause damage or fire. When you need to change the fuse, consult a professional.
- Use only the supplied mounting hardware for a safe and secure installation.
- To avoid short circuit, do not expose the apparatus, remote control or remote control batteries to rain or water.
- Never insert objects into the ventilation slots or other openings on the apparatus.
- Clean the apparatus and frame with a soft, damp cloth. Never use substances such as alcohol, chemicals or household cleaners on the apparatus.
- Never place any objects other than discs into the apparatus.
- Never use solvents such as benzene, thinner, cleaners available commercially, or anti-static sprays intended for discs.
- Visible and invisible laser radiation when open. Avoid exposure to beam.
- Risk of damage to the apparatus screen! Never touch, push, rub or strike the screen with any object.

Caution

Use of controls or adjustments or performance of procedures other than herein may result in hazardous radiation exposure or other unsafe operation.

Notice

The making of unauthorized copies of copy-protected material, including computer programs, files, broadcasts and sound

recordings, may be an infringement of copyrights and constitute a criminal offence. This equipment should not be used for such purposes.

Recycling



Your product is designed and manufactured with high quality materials and components, which can be recycled and reused. When you see the crossed-out wheel bin symbol attached to a product, it means the product is covered by the European Directive 2002/96/EC.



Never dispose of your product with other household waste. Please inform yourself about the local rules on the separate collection of electrical and electronic products. The correct disposal of your old product helps prevent potentially negative consequences on the environment and human health. Your product contains batteries covered by the European Directive 2006/66/EC, which cannot be disposed of with normal household waste. Please inform yourself about the local rules on separate collection of batteries. The correct disposal of batteries helps prevent potentially negative consequences on the environment and human health.

This device complies with part 15 of the FCC rules. Operation is subject to the following two conditions: (1) this device may not cause harmful interference, and (2) this device must accept any interference received, including interference that may cause undesired operation. NOTE: The manufacturer is not responsible for any radio or TV interference caused by unauthorized modifications to this equipment. Such modifications could void the user's authority to operate the equipment.

182019M
01A1N5LW1550513D

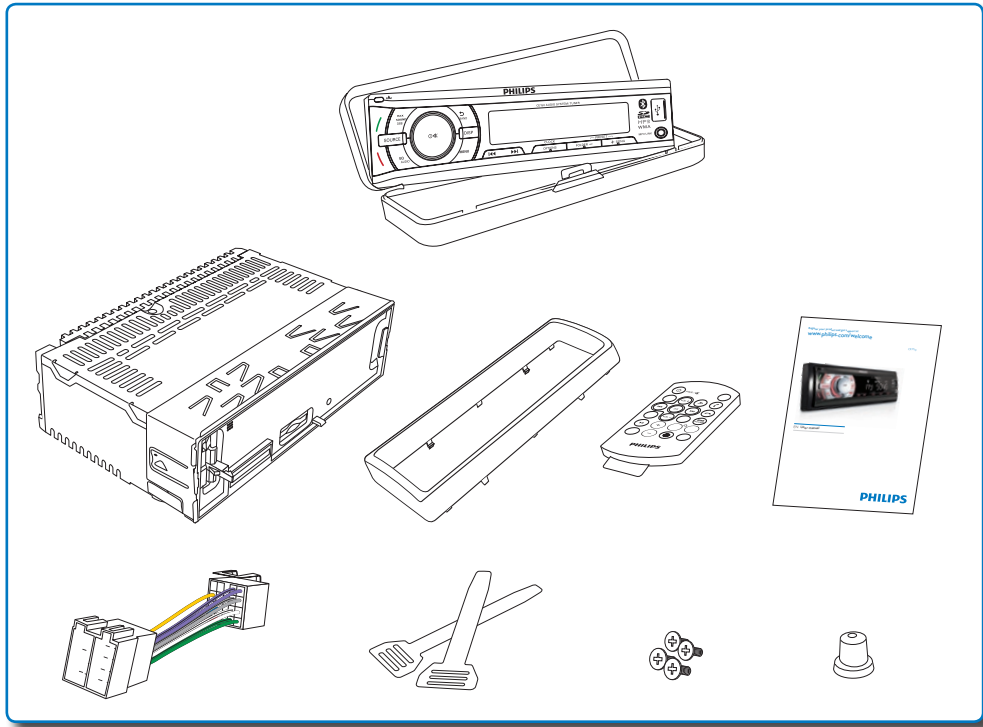


Congratulations on your purchase, and welcome to Philips!
To fully benefit from the support that Philips offers, register your product at www.Philips.com/welcome.
Read this user manual carefully before you install and use the unit. Save it for future reference.

Introduction

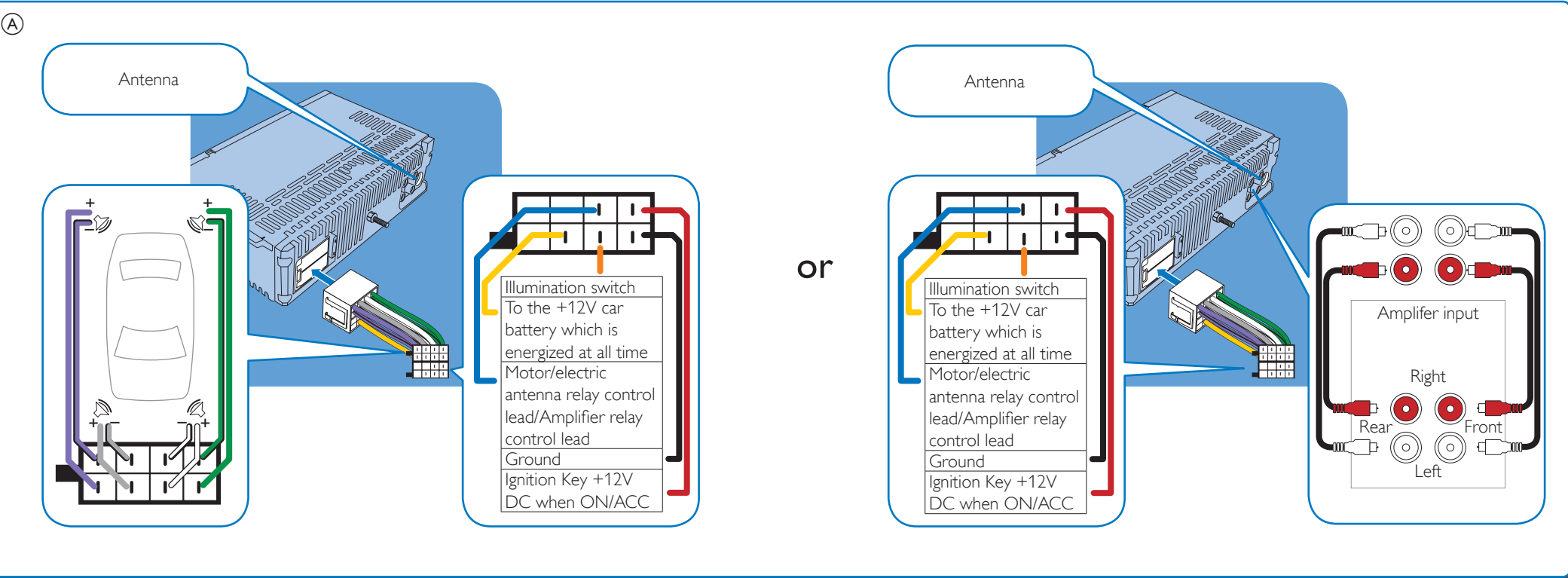
With the in-car audio system, you can enjoy your drive while you listen to:

- FM or AM (MW) radio
- Audio from a USB drive
- Audio from a SD/SDHC card
- Audio from external devices



Always follow the sequential instructions in the manual. If you contact Philips, you will be asked for the model and serial number of your unit. The model number and serial number are on the back or side of your unit. Write the numbers here: Model No.: _____ Serial No.: _____

1 Connect



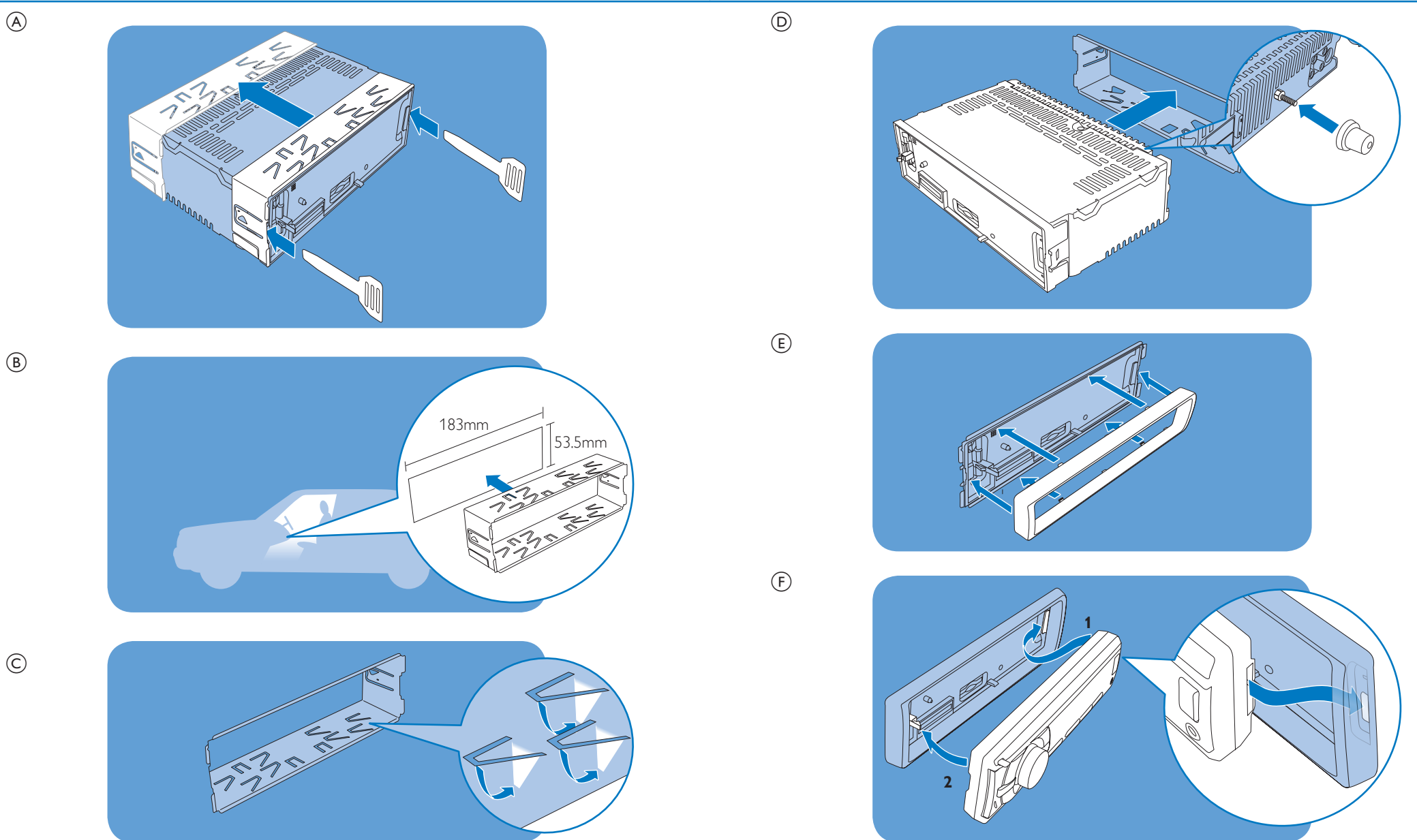
Caution

Ensure that all leads are insulated with electrical tape.

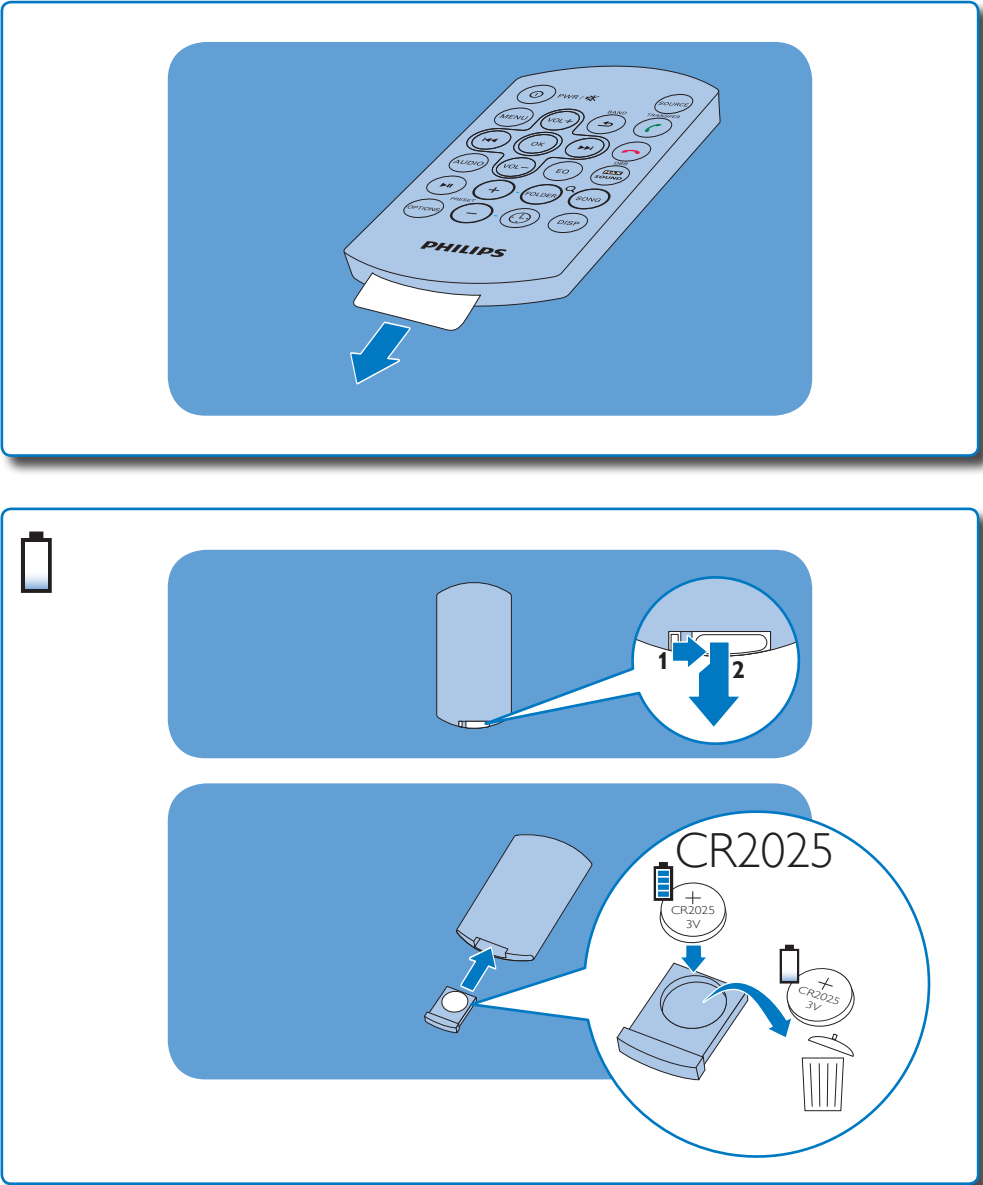
Note

Consult a professional to connect CE150 different from user manual instructions.

2 Mount into dashboard

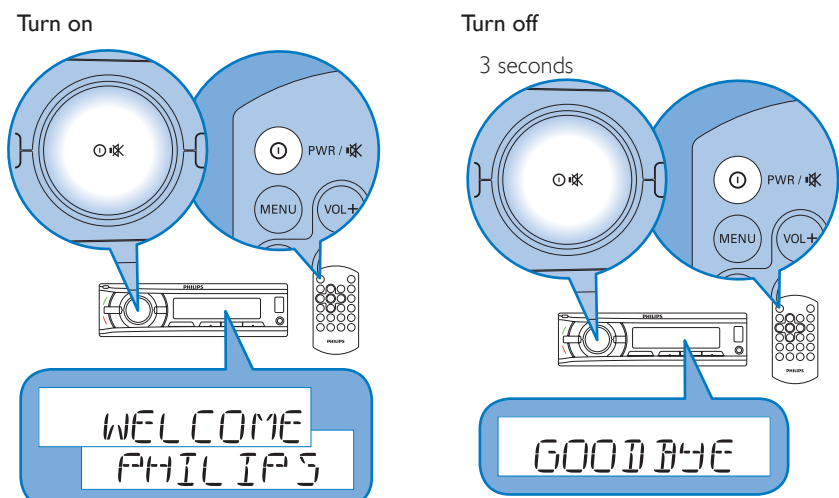


Remote control

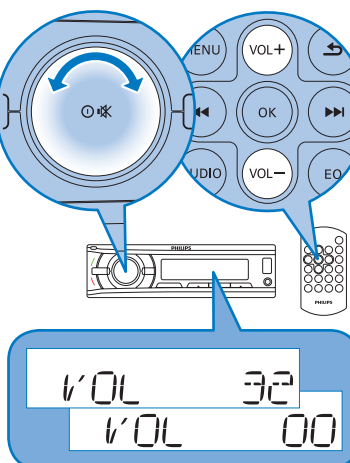


3 Get started

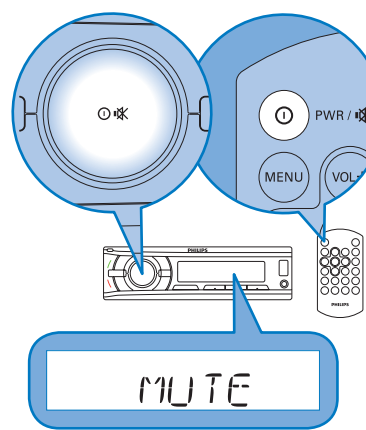
1 Turn on / Turn off



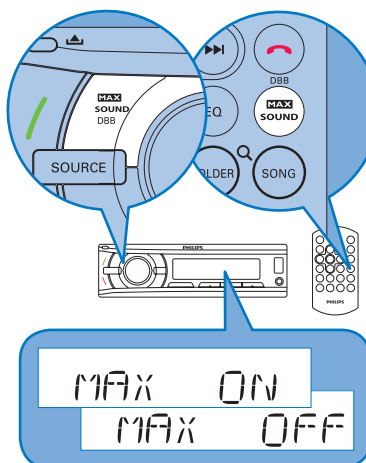
Adjust volume



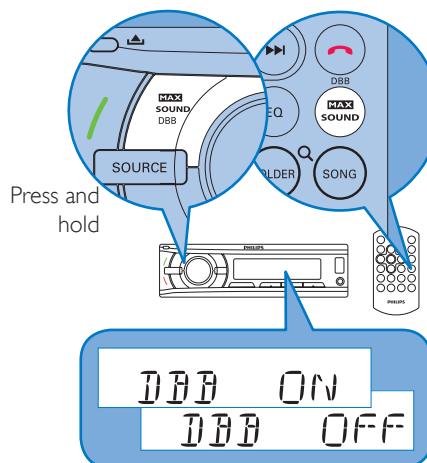
Mute



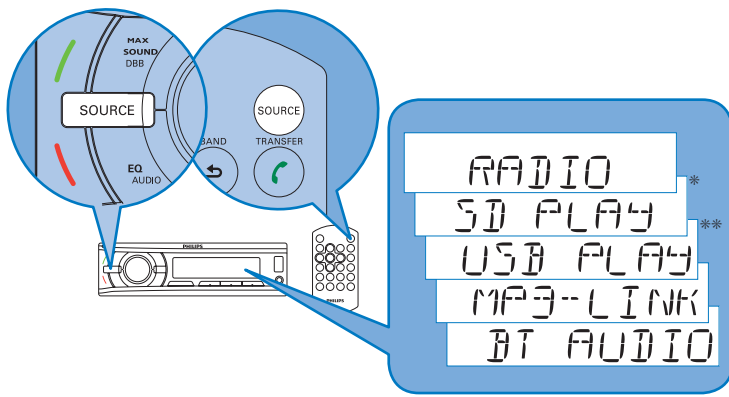
MAX SOUND Maximizing volume



DBB Dynamic Bass Boost

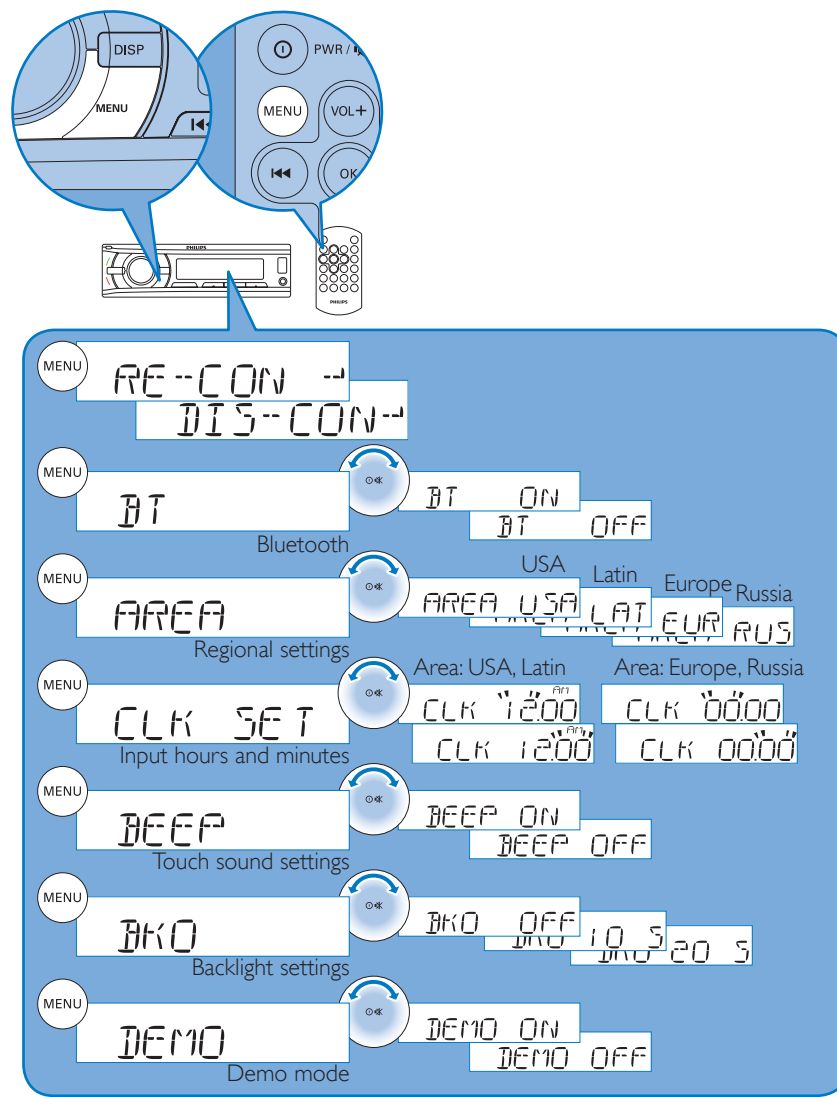


Source

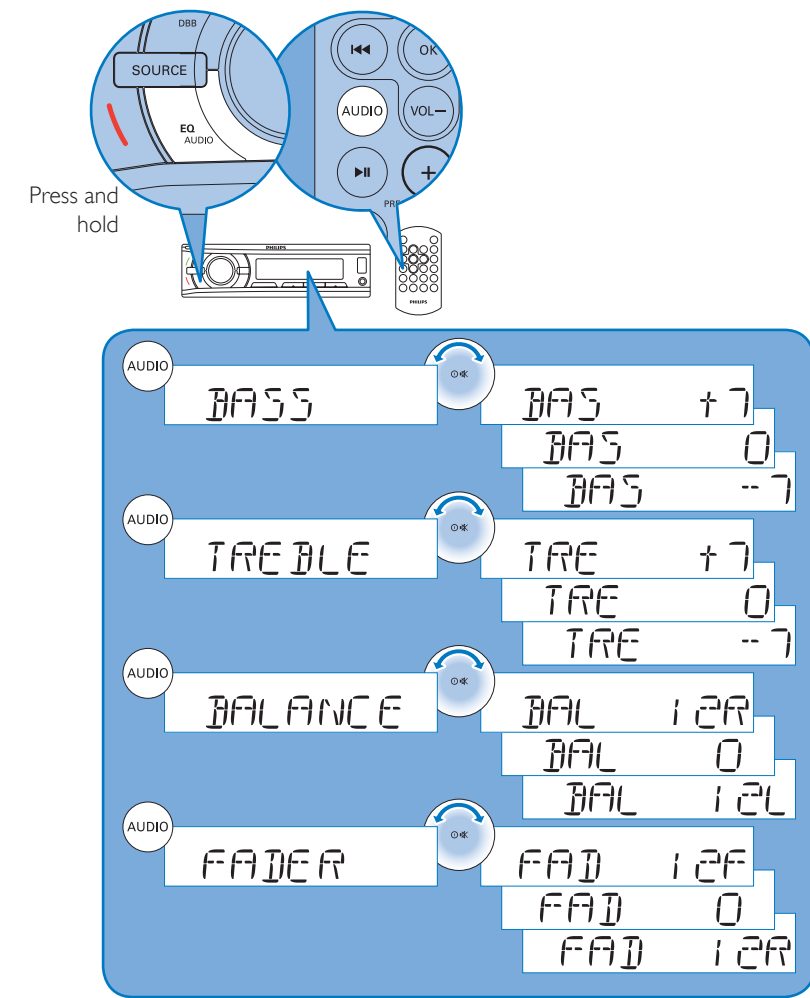


* if SD card is inserted
** if USB device is inserted

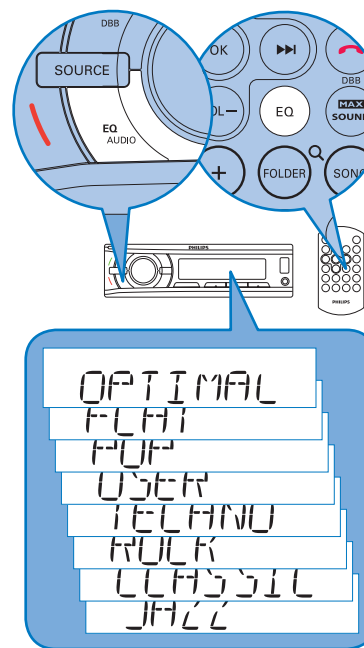
Adjust system settings



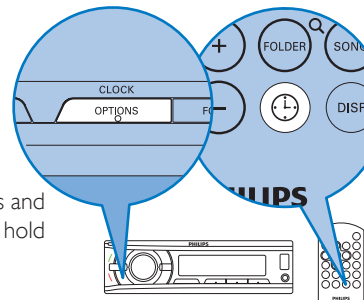
Adjust sound settings



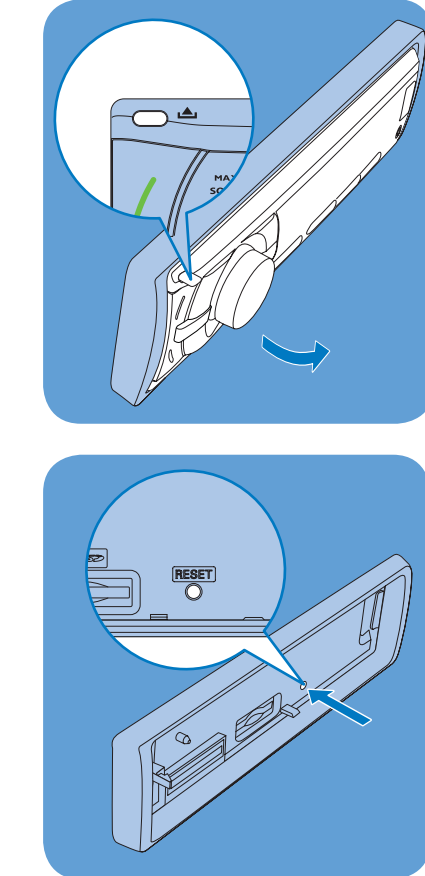
Equalizer



View clock



Reset

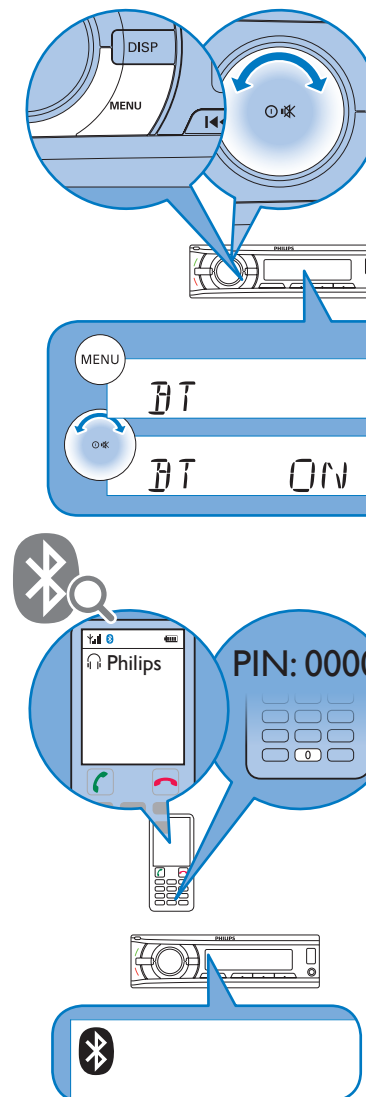


Caution

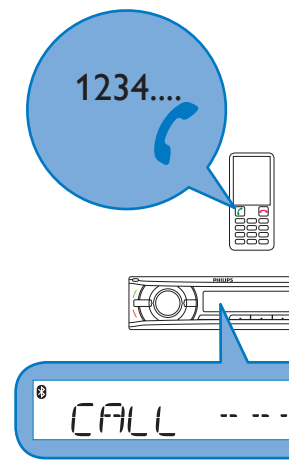
Once it is restore, it cannot be undone.

Connect Bluetooth

Pairing



Make a call



Redial

