



EN Short User Manual  
ES Manual de usuario corto  
FR Bref mode d'emploi



P&F USA Inc.  
PO Box 2248  
Alpharetta, GA 30023-2248  
Phone: 1 866 309 0845  
Meet Philips at the Internet  
<http://www.philips.com/welcome>



All registered and unregistered trademarks are property of their respective owners.  
© 2013 Koninklijke Philips Electronics N.V.  
All rights reserved.

BTM2180\_37\_Short User Manual\_V1.1



Register online at [www.philips.com/welcome](http://www.philips.com/welcome) today to get the very most from your purchase.

Registering your model with PHILIPS makes you eligible for all of the valuable benefits listed below so don't miss out. Register online at [www.philips.com/welcome](http://www.philips.com/welcome) to ensure:

- \*Product Safety Notification**  
By registering your product, you'll receive notification - directly from the manufacturer.
- \*Additional Benefits**  
Registering your product guarantees that you'll receive all of the privileges to which you're entitled, including special money-saving offers.

**PHILIPS**  
Congratulations on your purchase, and welcome to the "family!"

Dear PHILIPS product owner:  
Thank you for your confidence in PHILIPS. You've selected one of the best-built, best-backed products available today. We'll do everything in our power to keep you happy with your purchase for many years to come.

As a member of the PHILIPS "family," you're entitled to protection by one of the most comprehensive warranties in the industry. What's more, your purchase guarantees you'll receive all the information and special offers for which you qualify plus easy access to accessories from our convenient home shopping network.

Most importantly, you can count on our uncompromising commitment to your total satisfaction.

All of this is our way of saying welcome - and thanks for investing in a PHILIPS product.

**PS.** To get the most from your PHILIPS purchase, be sure to register online at:  
[www.philips.com/welcome](http://www.philips.com/welcome)

Regístrate en línea en [www.philips.com/welcome](http://www.philips.com/welcome) hoy mismo para aprovechar al máximo su compra.

Al registrar su modelo con PHILIPS usted cumplirá con los requisitos para obtener todos los valiosos beneficios que se indican a continuación, no se los pierda! Regístrese en línea en [www.philips.com/welcome](http://www.philips.com/welcome) para asegurarse de:

- \*Seguridad del producto Notificación**  
Al registrar su producto, recibirá la notificación (directamente del fabricante).
- \*Beneficios adicionales**  
Registrar su producto garantiza que recibirá todos los privilegios a los cuales tiene derecho, incluyendo las ofertas especiales para ahorrar dinero.

**PHILIPS**  
¡Felicitaciones por su compra y bienvenido a la "familia!"

Estimado propietario de un producto PHILIPS:  
Gracias por su confianza en PHILIPS. Usted ha escogido uno de los productos mejor contruidos y con mejor respaldo disponible hoy en día. Haremos todo lo que está a nuestro alcance por mantenerle satisfecho con su compra durante muchos años.

Como miembro de la "familia" PHILIPS, usted tiene derecho a estar protegido con una de las garantías más completas de la industria. Lo que es más, su compra le garantiza que recibirá toda la información y ofertas especiales a las que tiene derecho, además de un fácil acceso a los accesorios desde nuestra cómoda red de compra desde el hogar.

Y lo que es más importante, usted puede confiar en nuestro ininterrotto compromiso con su satisfacción total.

Todo esto es nuestra manera de decirle bienvenido y gracias por invertir en un producto PHILIPS.

**PS.** Para aprovechar al máximo su compra PHILIPS, asegúrese de registrarse en línea en:  
[www.philips.com/welcome](http://www.philips.com/welcome)

Enregistrez-vous en ligne à [www.philips.com/welcome](http://www.philips.com/welcome) le plus tôt possible pour profiter pleinement de votre achat.

L'enregistrement de votre modèle auprès de PHILIPS confirme votre éligibilité à tous les bénéfices mentionnés ci-dessus. Enregistrez-vous en ligne à [www.philips.com/welcome](http://www.philips.com/welcome) pour assurer :

- \*Avis sur la sécurité des produits**  
En enregistrant votre produit, vous serez avisé - directement par le fabricant.
- \*Bénéfices additionnels**  
L'enregistrement de votre produit garantit que vous bénéficierez de tous les privilèges auxquels vous avez droit y compris des offres spéciales.

**PHILIPS**  
Nous vous félicitons de votre achat et vous souhaitons la bienvenue dans la "famille"!

Cher propriétaire d'un produit PHILIPS :  
Merci de votre confiance en PHILIPS. Vous avez choisi un produit de fabrication et de garantie supérieures parmi les meilleurs disponibles sur le marché. Et nous ferons tout en notre pouvoir pour que vous soyez pleinement satisfait de votre achat pour des années à venir.

En tant que membre de la "famille" PHILIPS, vous avez droit à une protection inégalable par l'une des garanties les plus complètes de l'industrie.

De plus, votre achat garantit que vous recevrez toutes les informations et offres spéciales auxquelles vous avez droit, ainsi qu'un accès facile à toute une gamme d'accessoires disponibles via notre réseau de téléachat.

Mais ce qui est encore plus important, vous pouvez compter sur notre engagement total quand il s'agit de votre entière satisfaction. C'est notre façon de vous souhaiter la bienvenue et de vous remercier de votre investissement dans un produit PHILIPS.

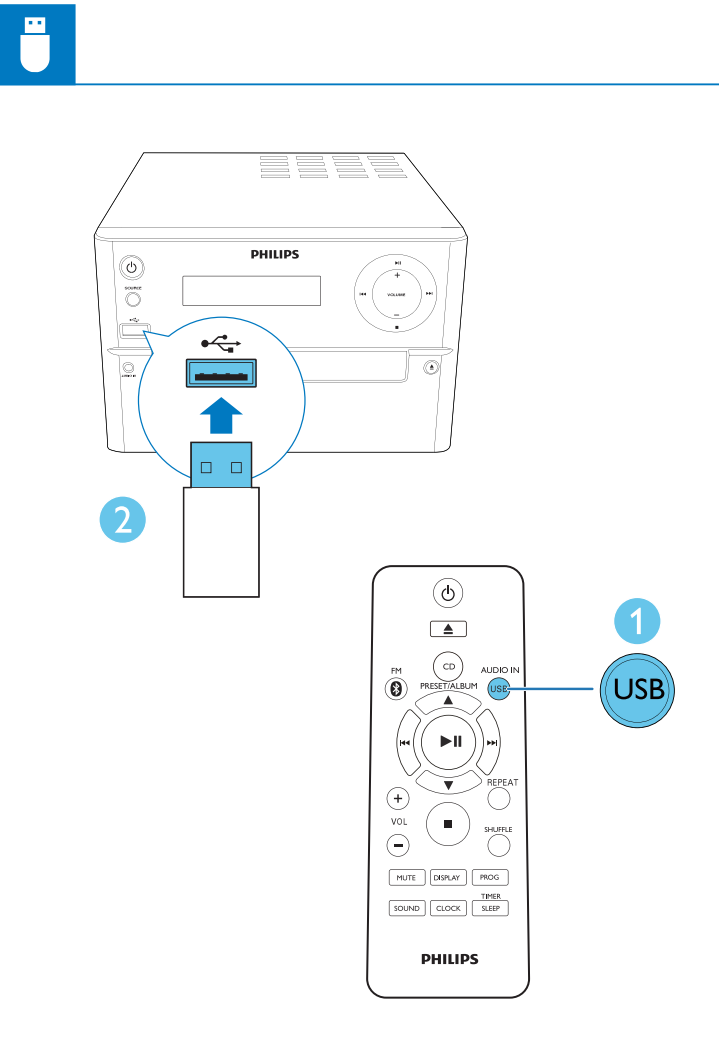
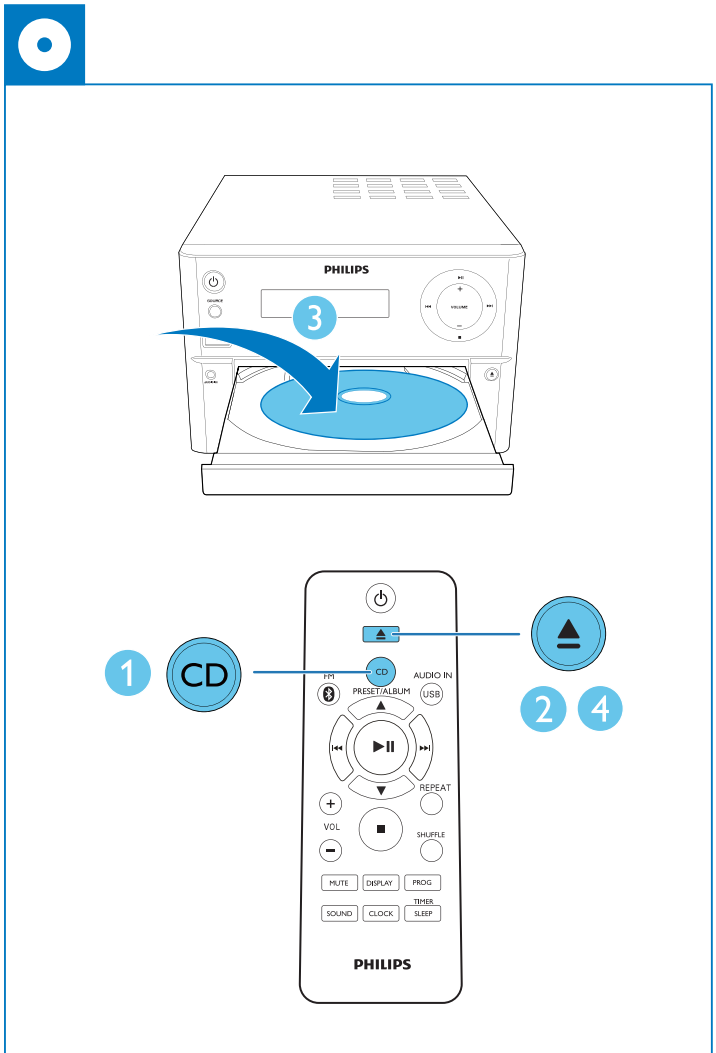
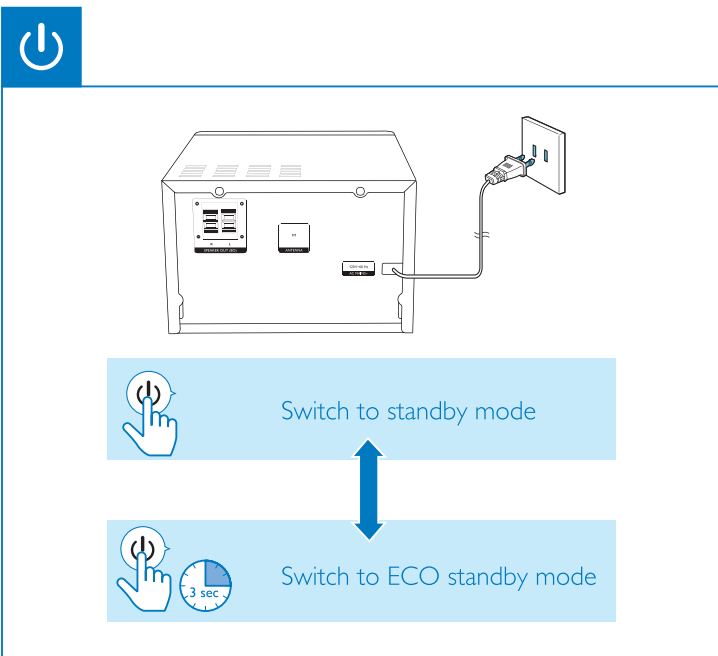
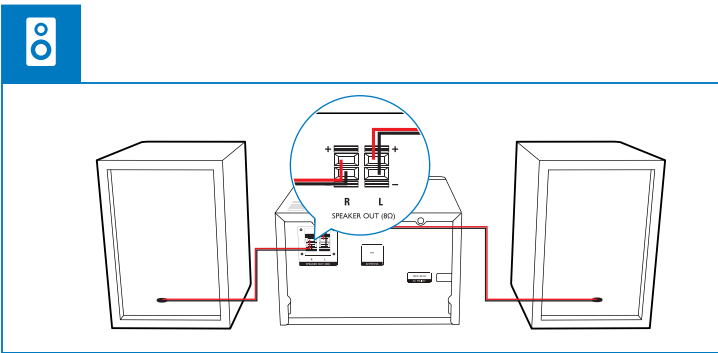
**PS.** Pour bénéficier au maximum de votre produit PHILIPS, assurez-vous de vous enregistrer en ligne à:  
[www.philips.com/welcome](http://www.philips.com/welcome)

Before using your product, read all accompanying safety information.

PHILIPS Visit our World Wide Web Site at <http://www.philips.com/welcome>

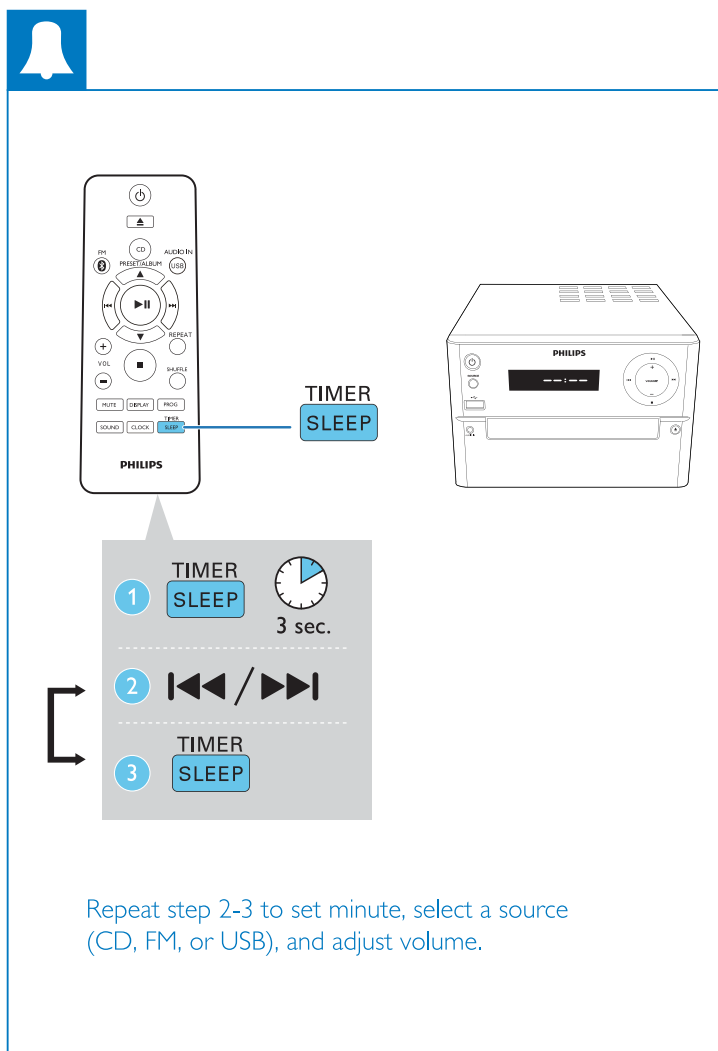
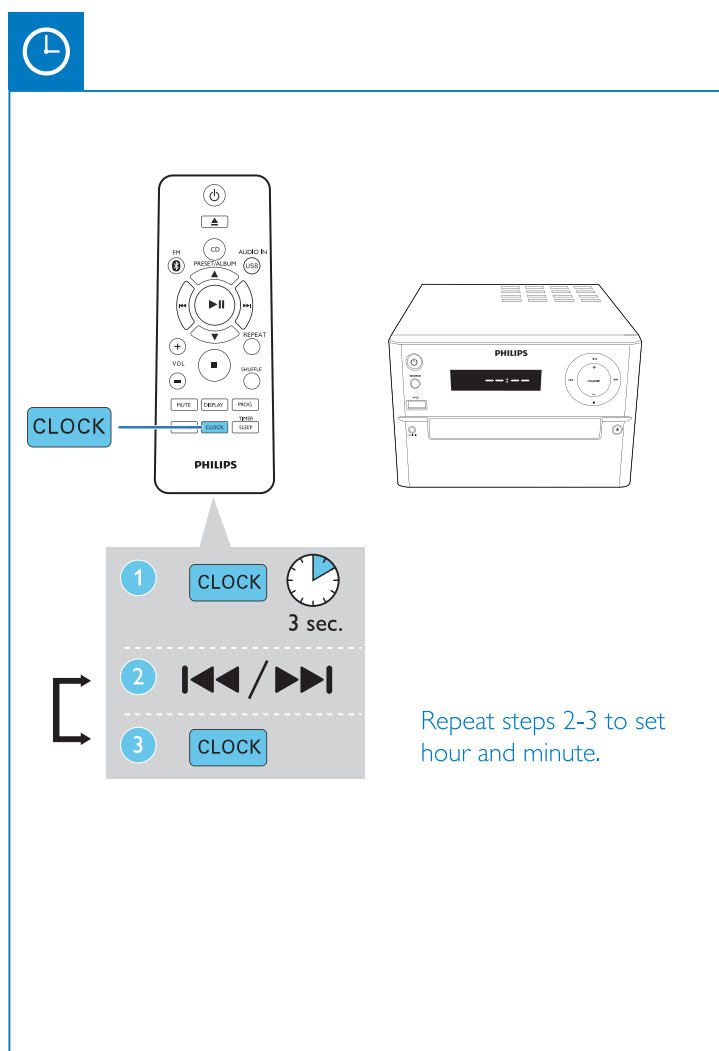
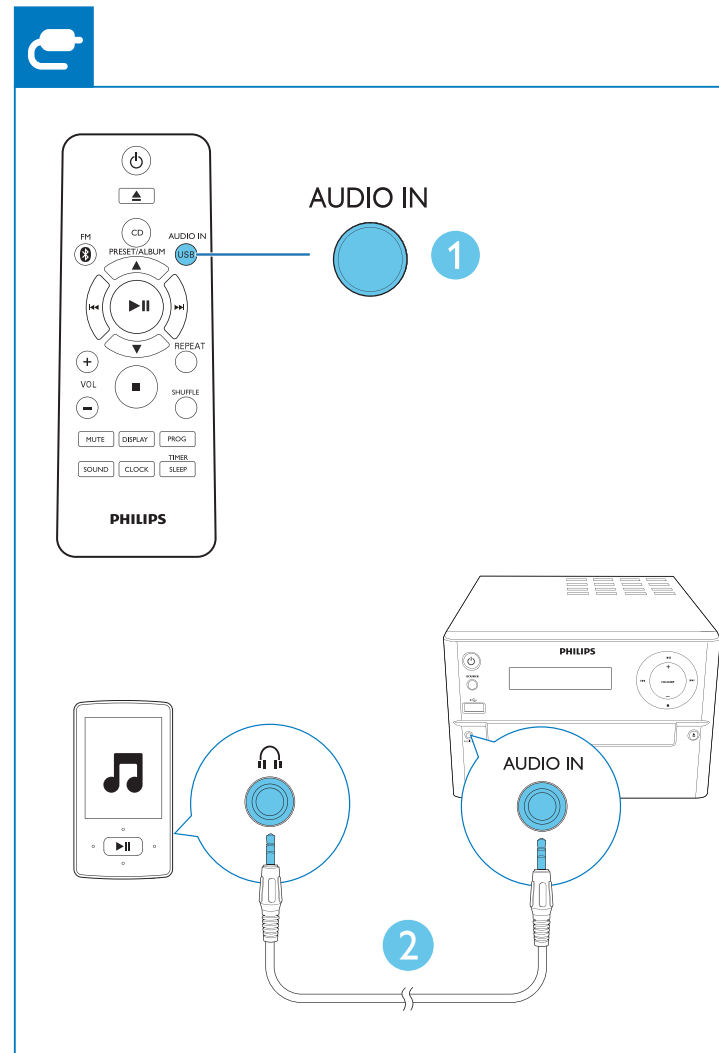
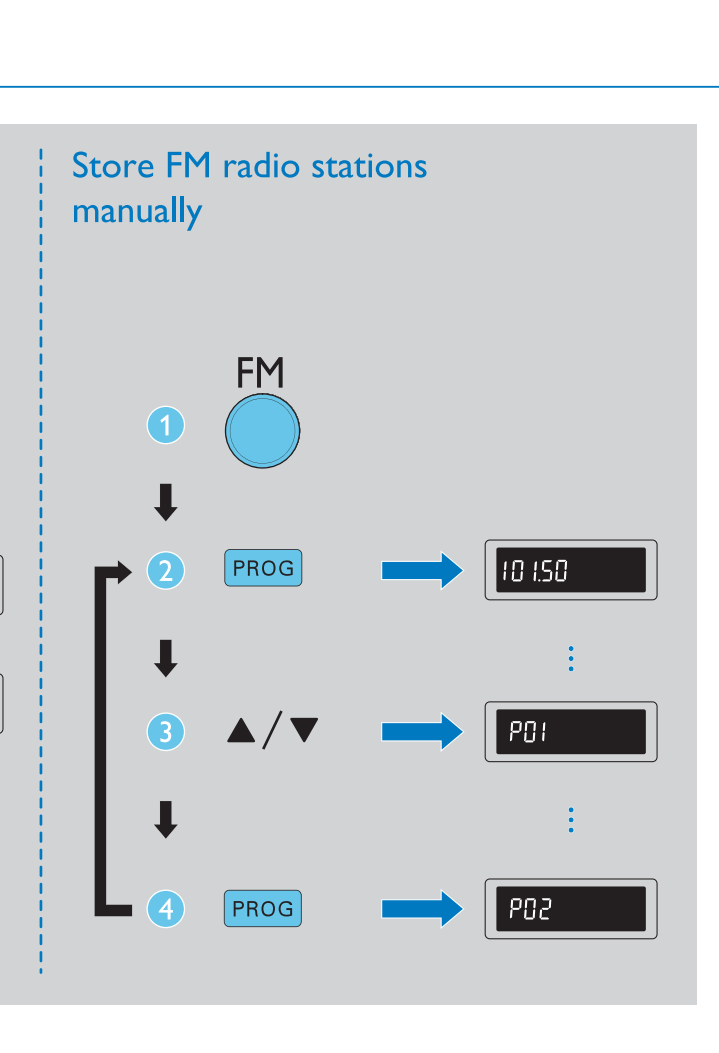
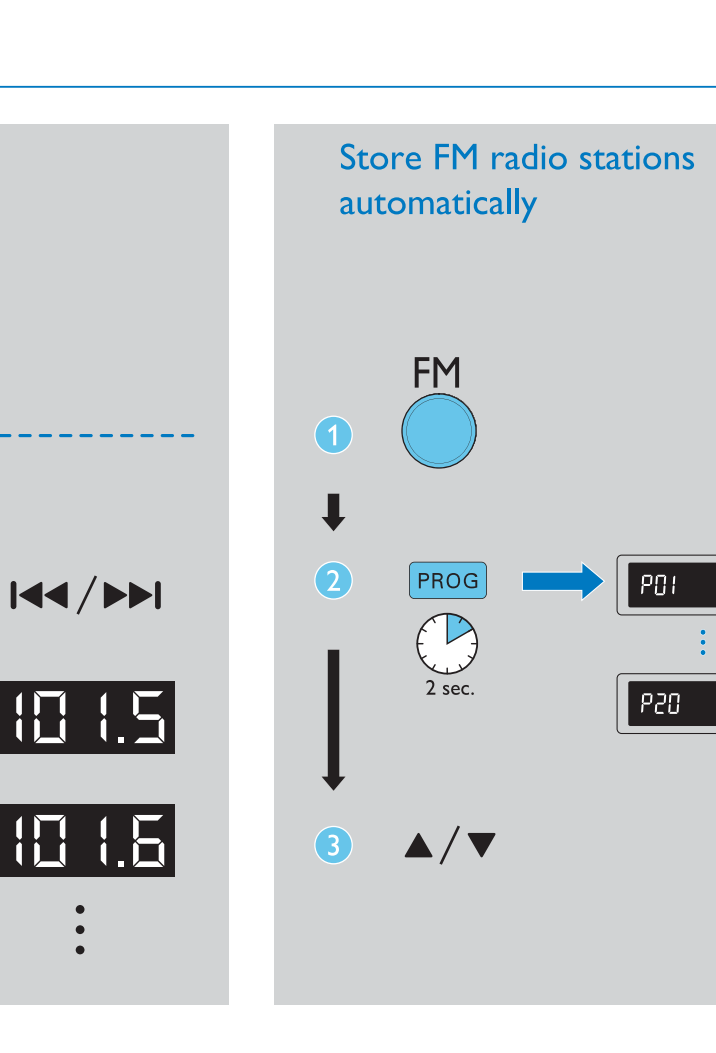
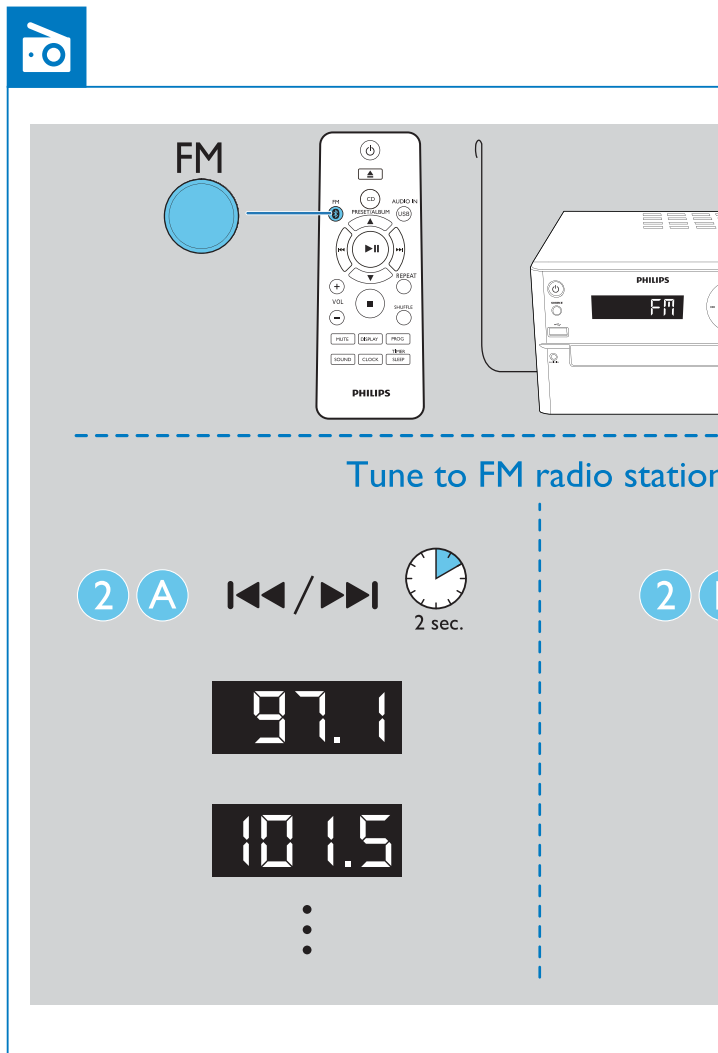
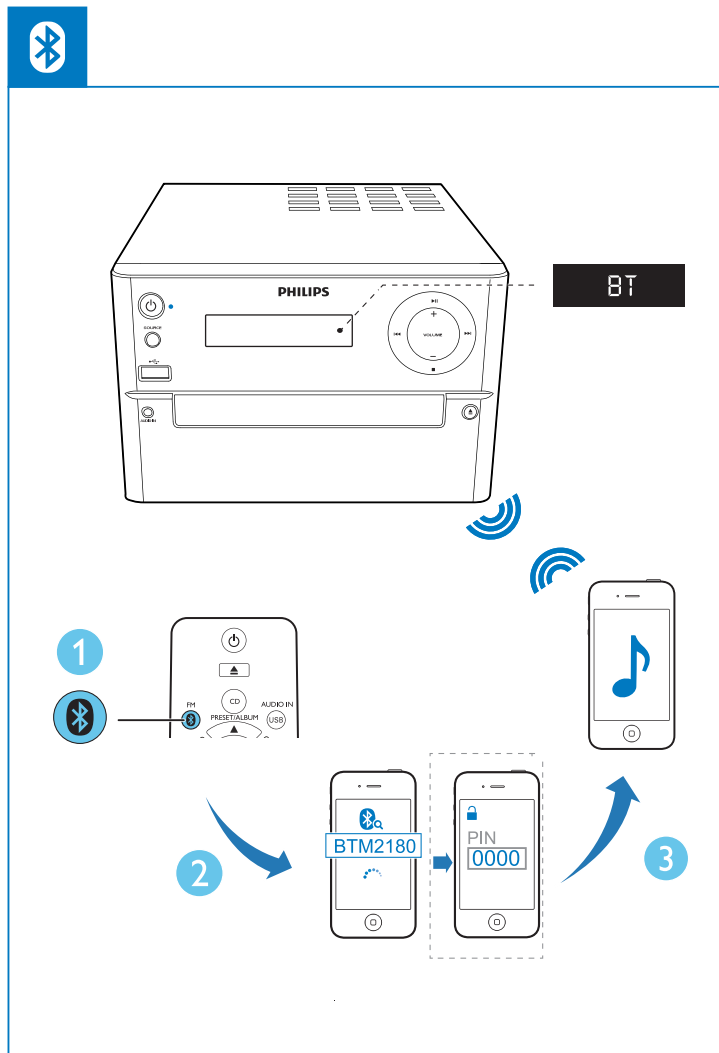
PHILIPS Visite nuestro sitio en el World Wide Web en <http://www.philips.com/welcome>

PHILIPS Visitez notre site sur le Web à <http://www.philips.com/welcome>



**Control play**

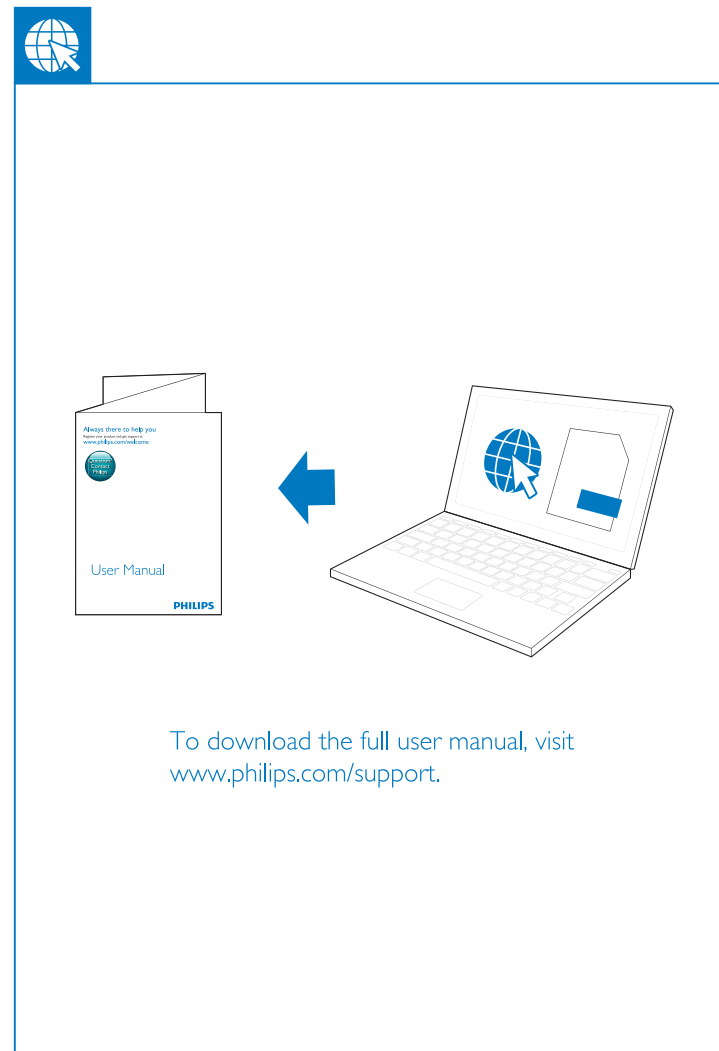
▲/▼	Select a folder.
◀/▶	Select an audio file.
⏸	Pause or resume play.
■	Stop play.
REPEAT	Play a track or all tracks repeatedly.
SHUFFLE	Play tracks randomly.
VOL +/-	Increase or decrease the volume.
MUTE	Mute or restore sound.
SOUND	Enrich sound effect with DSC: balanced, clear, powerful, warm, and bright.
DISPLAY	Adjust display brightness.



**Specifications**

Output Power	70 W RMS (30% THD) 50 W RMS (10% THD)
Bluetooth version	V2.1 + EDR
Frequency band	2.4GHz - 2.48GHz ISM Band
Range	10m (free space)
Tuning Range	87.5-108 MHz
Tuning grid	50 KHz
USB Direct Version	2.0 full speed
USB 5 V Power	≤500 mA
Disc Diameter	12 cm/8 cm
Support Disc	CD-DA, CD-R, CD-RW, MP3-CD
AC power	120V ~ 60 Hz
Operation Power Consumption	30 W
Eco Standby Power Consumption	<0.5 W
Dimensions	
- Main Unit (W x H x D)	180 x 121 x 239 mm
- Speaker Box (W x H x D)	140 x 260 x 185 mm
Weight	
- Main Unit	1.6 kg
- Speaker Box	2 x 2.1 kg

- Compatible USB devices:**
- USB flash memory (USB2.0 or USB1.1)
  - USB flash players (USB2.0 or USB1.1)
  - Memory cards (requires an additional card reader to work with this unit)
- Supported formats:**
- USB or memory file format: FAT12, FAT16, FAT32 (sector size: 512 bytes)
  - MP3 bit rate (data rate): 32-320 Kbps and variable bit rate
  - Directory nesting up to a maximum of 8 levels
  - Number of albums/folders: maximum 99
  - Number of tracks/titles: maximum 999
  - ID3 tag V2.0 or later
  - File name in Unicode UTF8 (maximum length: 32 bytes)
- Supported MP3 disc formats**
- ISO9660 Joliet
  - Maximum title number: 128 (depending on file name length)
  - Maximum album number: 99
  - Supported sampling frequencies: 32 kHz, 44.1 kHz, 48 kHz
  - Supported Bitrates: 32-256 (kbps), variable bit rates





- Antes de utilizar el producto,lea toda la información de seguridad que se adjunta.
- Activación del modo de espera
- Cómo pasar a modo de espera de bajo consumo:
- Para descargar el manual de usuario completo, visite [www.philips.com/support](http://www.philips.com/support).
- Control de reproducción**
- ▶/▼ Seleccione una carpeta.
- ◀/▶ Seleccione un archivo de audio.
- ⏸ Hace una pausa o reanuda la reproducción.
- Deñene la reproducción.
- REPEAT Reproduce una pista o todas varias veces.
- SHUFFLE Reproduce las pistas de manera aleatoria.
- VOL +/- Aumenta o reduce el volumen.
- MUTE Para silenciar o activar el sonido.
- SOUND Enriquezca el efecto de sonido con DSC: equilibrado, nítido, potente, cálido y brillante.
- DISPLAY Ajusta el brillo de la pantalla

- Sintonización de emisoras de radio FM.
- Almacenamiento automático de las emisoras de radio FM.
- Almacenamiento manual de las emisoras de radio FM.
- Repita los pasos 2 y 3 para configurar la hora y los minutos.
- Repita los pasos 2 y 3 para ajustar los minutos,seleccionar una fuente (CD, FM o USB) y ajustar el volumen.

**Especificaciones**

máx.	70 W RMS (30% THD) 50 W RMS (10% THD)
Versión de Bluetooth	V2.1 + EDR
Banda de frecuencia	Banda ISM de 2,4 GHz – 2,48 GHz
Alcance	10 m (espacio libre)
Rango de sintonización	87,5 - 108 MHz
Intervalo de sintonización	50 kHz
Versión de USB directo	2,0 de alta velocidad
USB con potencia de 5V	≤500 mA
Diámetro del disco	12 cm /8 cm
Discos compatibles	CD-DA, CD-R, CD-RW, MP3-CD
Alimentación de CA	120V~ 60 Hz
Consumo de energía en funcionamiento	30 W
Consumo en modo de espera de bajo consumo	< 0,5 W
Dimensiones	
- Unidad principal (ancho x alto x profundo)	180 x 121 x 239 mm
- Caja de altavoz (ancho x alto x profundo)	140 x 260 x 185 mm
Peso	
- Unidad principal	1,6 kg
- Caja de altavoz	2 x 2,1 kg

- Dispositivos USB compatibles:**
- Memoria flash USB (USB 2.0 o USB 1.1)
  - Reproductores flash USB (USB 2.0 o USB 1.1)
  - Tarjetas de memoria (requieren un lector de tarjetas adicional para funcionar en esta unidad).

- Formatos compatibles**
- USB o formato de archivo de memoria FAT12, FAT16, FAT32 (tamaño del sector: 512 bytes).
  - Velocidad de bits (velocidad de datos): de MP3: 32 a 320 Kbps y velocidad de bits variable
  - Directorios anidados hasta un máximo de 8 niveles
  - Cantidad máxima de álbumes o carpetas: 99
  - Cantidad máxima de pistas o títulos: 999
  - Etiqueta ID3 v2.0 o superior
  - Caja de archivo en formato UTF8 (longitud máxima: 32 bytes)
- Formatos de disco MP3 compatibles**
- ISO9660 Joliet
  - Número máximo de títulos: 128 (en función de la longitud del nombre del archivo)
  - Cantidad máxima de álbumes: 99
  - Frecuencias de muestreo compatibles: 32 kHz; 44,1 kHz; 48 kHz
  - Velocidades de bits compatibles: 32–256 (kbps), velocidades de bits variables

- Avant d'utiliser votre produit, lisez toutes les informations sur la sécurité fournies.
- Activation du mode veille.
- Pour activer le mode veille d'économie d'énergie.
- Pour télécharger le manuel d'utilisation complet, rendez-vous sur [www.philips.com/support](http://www.philips.com/support).
- Controlar a reprodução**
- ▶/▼ Permet de sélectionner un dossier.
- ◀/▶ Permet de sélectionner un fichier audio.
- ⏸ Permet de suspendre ou de reprendre la lecture.
- Permet d'arrêter la lecture.
- REPEAT (répéter) Permet de lire une piste ou toutes les pistes en boucle.
- SHUFFLE (aléatoire) Permet de lire les pistes de façon aléatoire.
- VOL +/- Permet d'augmenter ou de réduire le volume.
- MUTE (silence) Permet de couper ou de rétablir le son.
- SOUND (son) Permet d'enrichir l'effet sonore avec la fonction DSC : équilibré, clair, puissant, chaud et lumineux.
- DISPLAY (afficheur) Permet de régler la luminosité de l'écran.
- Réglage des stations de radio FM.
- Mémoire automatique des stations de radio FM.
- Programmation manuelle des stations de radio FM.
- Répétez les étapes 2 et 3 pour régler l'heure et les minutes.
- Répétez l'étape 2 et 3 pour régler les minutes, sélectionner une source (CD, FM ou USB) et régler le volume.

**Especificações**

Puissance de sortie	70 W RMS (THD 30 %) 50 W RMS (THD 10 %)
Versión Bluetooth	V2.1 + EDR
Frecuencia de transmisión	Banda ISM 2,4 GHz - 2,48 GHz
Portée	10 m (sans obstacle)
Gamme de fréquences	87,5-108 MHz
Grille de sintonisation	50 kHz
Versión USB Direct	2,0 ultrarápido
Alimentación USB 5 V	≤500 mA
Diámetro del disco	12 cm / 8 cm
Discos pris en charge	CD-DA, CD-R, CD-RW, MP3-CD (sans sheet)
Alimentation par secteur	120V~ 60 Hz
Consommation électrique en mode de fonctionnement	30 W
Consommation électrique en mode veille d'économie d'énergie	< 0,5 W
Dimensions	
- Unité principale (l x H x P)	180 x 121 x 239 mm
- Encinte (l x H x P)	140 x 260 x 185 mm
Poids	
- Unité principale	1,6 kg
- Encinte	2 x 2,1 kg

- Periféricos USB compatibles :**
- Mémoires flash USB (USB 2.0 ou USB 1.1)
  - Lecteurs flash USB (USB 2.0 ou USB 1.1)
  - Cartes mémoire (exigent un lecteur de cartes supplémentaire requis pour votre appareil)
- Formats pris en charge :**
- USB ou format de fichier mémoire : FAT12, FAT16, FAT32 (taille de secteur : 512 octets)
  - Débit binaire MP3 (taux de données) : 32 - 320 Kbit/s et débit binaire variable
  - Imbrication de répertoires jusqu'à 8 niveaux
  - Nombre d'albums/dossiers : 99 maximum
  - Nombre de pistes/titres : 999 maximum
  - ID3 tag version 2.0 ou ultérieure
  - Nom de fichier dans un dossier UTF8 (longueur maximale : 32 octets)

- Formatos de disco MP3 pris en charge**
- ISO9660 Joliet
  - Número de títulos maximum : 128 (según la longitud de los nombres de fichier)
  - Número d'álbums maximum : 99
  - Frecuencias de echantillonnage puestas en charge : 32 kHz; 44,1 kHz; 48 kHz
  - Débits binaires pris en charge : 32 - 256 (Kbit/s), débits variables

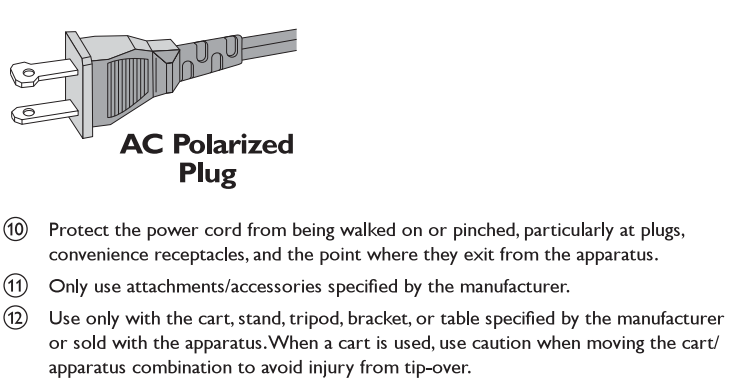
# 1 Important

## Safety



This bolt of lightning indicates unshielded material within the device may cause an electrical shock. For the safety of everyone in your household, please do not remove the covering. The exclamation mark calls attention to features for which you should read the enclosed literature closely to prevent operating and maintenance problems. WARNING: To reduce the risk of fire or electric shock, the device should not be exposed to rain or moisture and objects filled with liquids, such as vases, should not be placed on the device. CAUTION: To prevent electric shock, fully insert the plug. (For regions with polarized plugs: To prevent electric shock, match wide blade to wide slot.)

- Important Safety Instructions**
- Read these instructions.
  - Keep these instructions.
  - Heed all warnings.
  - Follow all instructions.
  - Do not use this apparatus near water.
  - Clean only with dry cloth.
  - Do not block any ventilation openings. Install in accordance with the manufacturer's instructions.
  - Do not install near any heat sources such as radiators, heat registers, stoves, or other apparatus (including amplifiers) that produce heat.
  - Do not defeat the safety purpose of the polarized or grounding-type plug. A polarized plug has two blades with one wider than the other. A grounding type plug has two blades and a third grounding prong. The wide blade or the third prong are provided for your safety. If the provided plug does not fit into your outlet, consult an electrician for replacement of the obsolete outlet.



- Protect the power cord from being walked on or pinched, particularly at plugs, convenience receptacles, and the point where they exit from the apparatus.
- Only use attachments/accessories specified by the manufacturer.
- Use only with the cart, stand, tripod, bracket, or table specified by the manufacturer or sold with the apparatus. When a cart is used, use caution when moving the cart/apparatus combination to avoid injury from tip-over.
- Unplug this apparatus during lightning storms or when unused for long periods of time.
- Refer all servicing to qualified service personnel. Servicing is required when the apparatus has been damaged in any way, such as power-supply cord or plug is damaged, liquid has been spilled or objects have fallen into the apparatus, the apparatus has been exposed to rain or moisture, does not operate normally, or has been dropped.
- Battery usage CAUTION – To prevent battery leakage which may result in bodily injury, property damage, or damage to the unit:
  - The battery (packed or installed) shall not be exposed to excessive heat such as sunshine, fire or the like.
  - Remove the battery when the device is not used for a long time.
- Apparatus shall not be exposed to dripping or splashing.
- Do not place any sources of danger on the apparatus (e.g. liquid filled objects, lighted candles).
- This product may contain lead and mercury. Dispose of these materials may be regulated due to environmental considerations. For disposal or recycling information, please contact your local authorities or the Electronic Industries Alliance [www.eia.org](http://www.eia.org).
- Where the MAINS plug or an appliance coupler is used as the disconnect device, the disconnect device shall remain readily operable.

- Protect the power cord from being walked on or pinched, particularly at plugs, convenience receptacles, and the point where they exit from the apparatus.
- Only use attachments/accessories specified by the manufacturer.
- Use only with the cart, stand, tripod, bracket, or table specified by the manufacturer or sold with the apparatus. When a cart is used, use caution when moving the cart/apparatus combination to avoid injury from tip-over.
- Unplug this apparatus during lightning storms or when unused for long periods of time.
- Refer all servicing to qualified service personnel. Servicing is required when the apparatus has been damaged in any way, such as power-supply cord or plug is damaged, liquid has been spilled or objects have fallen into the apparatus, the apparatus has been exposed to rain or moisture, does not operate normally, or has been dropped.
- Battery usage CAUTION – To prevent battery leakage which may result in bodily injury, property damage, or damage to the unit:
  - The battery (packed or installed) shall not be exposed to excessive heat such as sunshine, fire or the like.
  - Remove the battery when the device is not used for a long time.
- Apparatus shall not be exposed to dripping or splashing.
- Do not place any sources of danger on the apparatus (e.g. liquid filled objects, lighted candles).
- This product may contain lead and mercury. Dispose of these materials may be regulated due to environmental considerations. For disposal or recycling information, please contact your local authorities or the Electronic Industries Alliance [www.eia.org](http://www.eia.org).
- Where the MAINS plug or an appliance coupler is used as the disconnect device, the disconnect device shall remain readily operable.

## Warning

- Never remove the casing of this device.
- Never lubricate any part of this device.
- Never place this device on other electrical equipment.
- Keep the device away from direct sunlight, naked flames or heat.
- Never look into the laser beam inside the device.
- Ensure that you always have easy access to the power cord, plug or adaptor to disconnect this product from the power.

# 2 Notice

Any changes or modifications made to this device that are not expressly approved by Philips Consumer Lifestyle may void the user's authority to operate the equipment. This equipment has been tested and found to comply with the limits for a Class B digital device, pursuant to part 15 of the FCC Rules. These limits are designed to provide reasonable protection against harmful interference in a residential installation. This equipment generates, uses, and can radiate radio frequency energy and, if not installed and used in accordance with the instruction manual, may cause harmful interference to radio communications. However, there is no guarantee that interference will not occur in a particular installation. If this equipment does cause harmful interference to radio or television reception, which can be determined by turning the equipment off and on, the user is encouraged to try to correct the interference by one or more of the following measures:

- Relocate the receiving antenna.
  - Increase the separation between equipment and receiver.
  - Connect the equipment into an outlet on a circuit different from that to which the receiver is connected.
  - Consult the dealer or an experienced radio/TV technician for help.
- This digital apparatus does not exceed the Class B limits for radio noise emissions from digital apparatus as set out in the Radio Interference Regulations of the Canadian Department of Communications. This Class B digital apparatus complies with Canadian ICES-003. This device complies with Industry Canada licence-exempt RSS standard(s). Operation is subject to the following two conditions:
- This device may not cause harmful interference, and
  - This device must accept any interference received, including interference that may cause undesired operation.
- Your product is designed and manufactured with high quality materials and components which can be recycled and reused.
- Never dispose of your product with other household waste. Please inform yourself about the local rules on the separate collection of electrical and electronic products and batteries. The correct disposal of these products helps prevent potentially negative consequences on the environment and human health.
- Your product contains batteries which cannot be disposed of with normal household waste. Please inform yourself about the local rules on separate collection of batteries. The correct disposal of batteries helps prevent potentially negative consequences on the environment and human health. Please visit [www.recycle.philips.com](http://www.recycle.philips.com) for additional information on a recycling center in your area.
- Environmental information**
- All unnecessary packaging has been omitted. We have tried to make the packaging easy to separate into three materials: cardboard (box), polystyrene foam (buffer) and polyethylene (bags, protective foam sheet).
- Your system consists of materials which can be recycled and reused if disassembled by a specialized company. Please observe the local regulations regarding the disposal of packaging materials, exhausted batteries and old equipment.
- This equipment complies with FCC's and IC's RF radiation exposure limits set forth in an uncontrolled environment. The antenna(s) used for this transmitter must be installed and operated to provide a separation distance of at least 20 cm from all persons and must not be collocated or operating in conjunction with any other antenna or transmitter. Installers must ensure that 20cm separation distance will be maintained between the device (excluding its handset) and users.

Cet appareil est conforme aux limites d'exposition au rayonnement RF stipulées par la FCC et ITC pour une utilisation dans un environnement non contrôlé. Les antennes utilisées pour cet équipement doivent être installées et fonctionner à au moins 20 cm de distance des utilisateurs et ne doivent pas être placées près d'autres antennes ou émetteurs ou fonctionnent avec ceux-ci. Les installateurs doivent s'assurer qu'une distance de 20 cm sépare l'appareil (à l'exception du combiné) des utilisateurs.

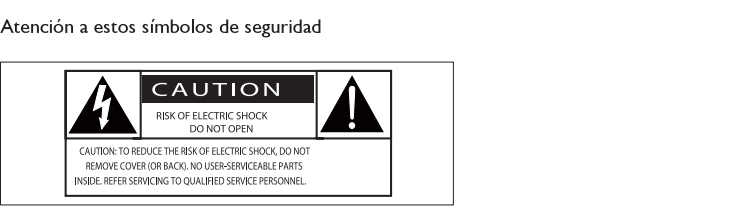
- Be responsible Respect copyrights**
- The making of unauthorized copies of copy-protected material, including computer programs, films, broadcasts and sound recordings, may be an infringement of copyrights and constitute a criminal offence. This equipment should not be used for such purposes.
- The Bluetooth® word mark and logos are registered trademarks owned by Bluetooth SIG, Inc. and any use of such marks by Philips is under license.
- This apparatus includes this label:



- Note**
- The type plate is located on the back of the device.

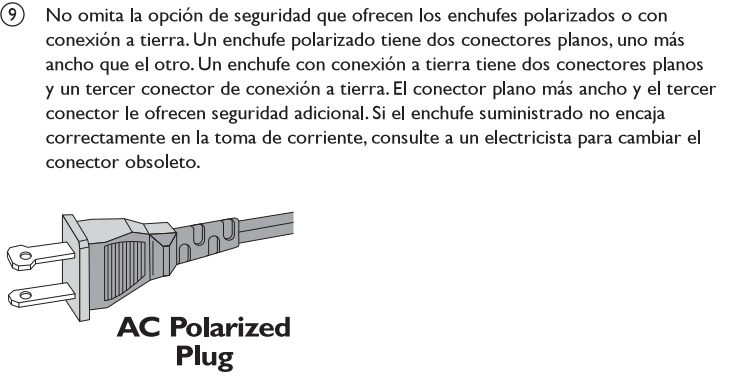
# 1 Importante

## Seguridad



El símbolo del rayo indica que los componentes sin aislamiento dentro del dispositivo pueden generar una descarga eléctrica. Para la seguridad de todas las personas de su hogar, no quite la cubierta. El signo de exclamación indica las características importantes cuya información debe leer en los manuales adjuntos a fin de evitar problemas en el funcionamiento y en el mantenimiento. ADVERTENCIA: Para reducir el riesgo de incendio o descarga eléctrica, el dispositivo no debe exponerse a la lluvia ni a la humedad ni se deben colocar sobre éste objetos que contengan líquidos. ATENCIÓN: Para evitar riesgos de una descarga eléctrica, inserte el enchufe por completo. (En regiones con enchufes polarizados: Para evitar riesgos de descarga eléctrica, el ancho de los conectores planos debe coincidir con el ancho de la ranura de conexión).

- Instrucciones de seguridad importantes**
- Lea estas instrucciones.
  - Guarde estas instrucciones.
  - Preste atención a todas las advertencias.
  - Siga todas las instrucciones.
  - No use este aparato cerca del agua.
  - Utilice únicamente un paño seco para la limpieza.
  - No bloquee las aberturas de ventilación. Realice la instalación de acuerdo con las indicaciones del fabricante.
  - No instale cerca ninguna fuente de calor como, por ejemplo, radiadores, rejillas de calefacción, hornos u otros aparatos que produzcan calor (incluidos los amplificadores).
  - No omita la opción de seguridad que ofrecen los enchufes polarizados o con conexión a tierra. Un enchufe polarizado tiene dos conectores planos, uno más ancho que el otro. Un enchufe con conexión a tierra tiene dos conectores planos y un tercer conector de conexión a tierra. El conector plano más ancho y el tercer conector le ofrecen seguridad adicional. Si el enchufe suministrado no encaja correctamente en la toma de corriente, consulte a un electricista para cambiar el conector obsoleto.



- Evite que el cable de alimentación se pise o se doble, en particular junto a los enchufes, tomas de corriente y en el punto donde sale del aparato.
- Use exclusivamente los dispositivos/accesorios indicados por el fabricante.
- Use únicamente el carrito, soporte, tripode o mesa indicados por el fabricante o que se incluya con el aparato. Cuando use un carrito, tenga cuidado al mover juntos el carrito y el aparato para evitar lesiones, ya que se puede volcar.
- Unplug this apparatus during lightning storms or when unused for long periods of time.
- Refer all servicing to qualified service personnel. Servicing is required when the apparatus has been damaged in any way, such as power-supply cord or plug is damaged, liquid has been spilled or objects have fallen into the apparatus, the apparatus has been exposed to rain or moisture, does not operate normally, or has been dropped.
- Battery usage CAUTION – To prevent battery leakage which may result in bodily injury, property damage, or damage to the unit:
  - The battery (packed or installed) shall not be exposed to excessive heat such as sunshine, fire or the like.
  - Remove the battery when the device is not used for a long time.
- Apparatus shall not be exposed to dripping or splashing.
- Do not place any sources of danger on the apparatus (e.g. liquid filled objects, lighted candles).
- This product may contain lead and mercury. Dispose of these materials may be regulated due to environmental considerations. For disposal or recycling information, please contact your local authorities or the Electronic Industries Alliance [www.eia.org](http://www.eia.org).
- Where the MAINS plug or an appliance coupler is used as the disconnect device, the disconnect device shall remain readily operable.

- Protect the power cord from being walked on or pinched, particularly at plugs, convenience receptacles, and the point where they exit from the apparatus.
- Only use attachments/accessories specified by the manufacturer.
- Use only with the cart, stand, tripod, bracket, or table specified by the manufacturer or sold with the apparatus. When a cart is used, use caution when moving the cart/apparatus combination to avoid injury from tip-over.
- Unplug this apparatus during lightning storms or when unused for long periods of time.
- Refer all servicing to qualified service personnel. Servicing is required when the apparatus has been damaged in any way, such as power-supply cord or plug is damaged, liquid has been spilled or objects have fallen into the apparatus, the apparatus has been exposed to rain or moisture, does not operate normally, or has been dropped.
- Battery usage CAUTION – To prevent battery leakage which may result in bodily injury, property damage, or damage to the unit:
  - The battery (packed or installed) shall not be exposed to excessive heat such as sunshine, fire or the like.
  - Remove the battery when the device is not used for a long time.
- Apparatus shall not be exposed to dripping or splashing.
- Do not place any sources of danger on the apparatus (e.g. liquid filled objects, lighted candles).
- This product may contain lead and mercury. Dispose of these materials may be regulated due to environmental considerations. For disposal or recycling information, please contact your local authorities or the Electronic Industries Alliance [www.eia.org](http://www.eia.org).
- Where the MAINS plug or an appliance coupler is used as the disconnect device, the disconnect device shall remain readily operable.

## Advertencia

- No quite nunca la carcasa del dispositivo.
- No lubrique ninguna pieza de este dispositivo.
- No coloque nunca este dispositivo sobre otro equipo eléctrico.
- No exponga el dispositivo a la luz solar directa, al calor o a las llamas.
- No mire nunca al haz láser que está dentro del dispositivo.
- Asigne de tener siempre un fácil acceso al cable de alimentación, al enchufe o al adaptador para desconectar el dispositivo de la corriente.

# 2 Aviso

Cualquier cambio o modificación que se realice en este dispositivo que no esté aprobada expresamente por Philips Consumer Lifestyle puede anular la autoridad del usuario para utilizar el equipo. Este equipo ha sido probado y cumple los límites establecidos para los dispositivos digitales de clase B de acuerdo con la sección 15 del reglamento FCC. Estos límites se han establecido para proporcionar una protección razonable contra las interferencias perjudiciales en instalaciones particulares. Este aparato genera, utiliza y puede emitir energía de frecuencias de radio y si no se instala y utiliza según el manual de instrucciones, puede provocar interferencias perjudiciales en las comunicaciones de radio.

- No obstante, no hay garantías de que no se produzcan interferencias en una instalación particular. Si el equipo causa interferencias perjudiciales en la recepción de radio o televisión, que se puedan percibir oncediendo y apagando el equipo, se recomienda al usuario que intente corregirlas tomando una o más de las siguientes medidas:
- Cambiar la posición de la antena receptora.
  - Aumentar la separación entre el aparato y el receptor.
  - Conectar el equipo a una toma de corriente de un circuito distinto al que está conectado al receptor.
  - Para obtener ayuda, póngase en contacto con el distribuidor o con un técnico de radio o televisión con experiencia.

Este dispositivo digital no excede los límites de Clase B en cuanto a emisiones de ruido de radio de dispositivos digitales; tal y como se establece en la regulación de interferencias de radio del departamento canadiense de comunicaciones (Radio Interference Regulations of the Canadian Department of Communications). Este aparato digital de clase B cumple la regulación canadiense ICES-003.

Este dispositivo cumple la CNR d'industrie Canada aplicables aux appareils radio exempts.

El funcionamiento está sujeto a dos condiciones:

- Este dispositivo no puede causar interferencias dañinas y
- Este dispositivo debe aceptar cualquier interferencia que reciba, incluyendo aquellas que puedan causar un funcionamiento no deseado.

El producto ha sido diseñado y fabricado con materiales y componentes de alta calidad que pueden reciclarse y reutilizarse.

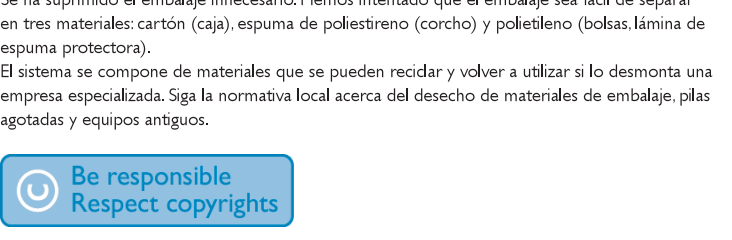
Nunca se deslaga del producto con el resto de la basura doméstica. Infórme de la legislación local sobre la recogida selectiva de pilas y productos eléctricos y electrónicos. La eliminación correcta de estos productos ayuda a evitar consecuencias potencialmente negativas para el medio ambiente y la salud humana.

Este producto contiene pilas que no se pueden desechar con la basura normal del hogar. Infórme de la legislación local sobre la recogida selectiva de pilas. La eliminación correcta de las pilas ayuda a prevenir posibles consecuencias negativas para el medio ambiente y la salud. Visite [www.recycle.philips.com](http://www.recycle.philips.com) para obtener más información sobre un centro de reciclaje de su zona.

**Información medioambiental**

Se ha suprimido el embalaje innecesario. Hemos intentado que el embalaje sea fácil de separar en tres materiales: cartón (caja), espuma de poliestireno (corcho) y polietileno (bolsas; láminas de espuma protectora).

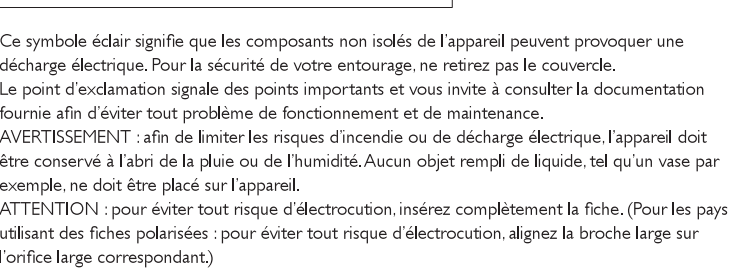
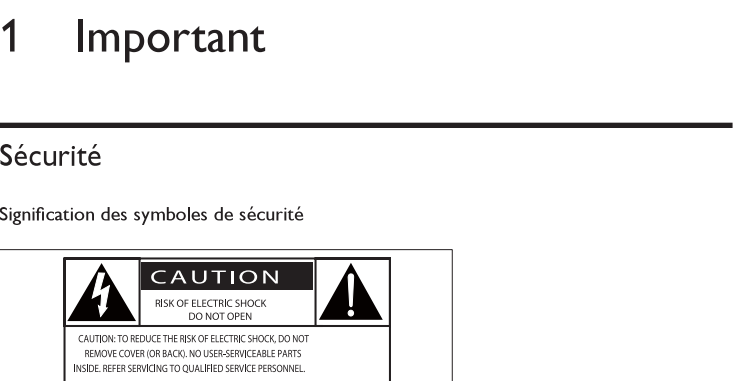
El sistema se compone de materiales que se pueden reciclar y volver a utilizar si se desmonta una empresa especializada. Siga la normativa local acerca del desecho de materiales de embalaje, pilas agotadas y equipos antiguos.



La copia no autorizada de material protegido contra copia, incluidos programas informáticos, archivos, emisiones y grabaciones de sonido, puede infringir los derechos de copyright y constituir un delito. Este equipo no se debe utilizar para tales fines. La marca nominativa Bluetooth® y los Logotipos son marcas comerciales registradas propiedad de Bluetooth SIG, Inc. Philips utiliza siempre estas marcas con licencia.

Este aparato incluye esta etiqueta:

- Note**
- The type plate is located on the back of the device.



Le symbole éclair signifie que les composants non isolés de l'appareil peuvent provoquer une décharge électrique. Pour la sécurité de votre entourage, ne retirez pas le couvercle. Le point d'exclamation signale des points importants et vous invite à consulter la documentation fournie afin d'éviter tout problème de fonctionnement et de maintenance. AVERTISSEMENT: afin de limiter les risques d'incendie ou de décharge électrique, l'appareil doit être conservé à l'abri de la pluie ou de l'humidité. Aucun objet rempli de liquide, tel qu'un vase par exemple, ne doit être placé sur l'appareil. ATTENTION: Pour éviter tout risque d'électrocution, insérez complètement la fiche. (Pour les pays utilisant des fiches polarisées: Pour éviter tout risque d'électrocution, alignez la broche large sur l'orifice large correspondant).

- Consignes de sécurité importantes**
- Lisez attentivement ces consignes.
  - Conservez soigneusement ces consignes.
  - Tenez compte de tous les avertissements.
  - Respectez toutes les consignes.
  - N'utilisez pas cet appareil à proximité d'une source d'eau.
  - Nettoyez l'appareil avec un chiffon sec uniquement.
  - N'obstruez pas les orifices de ventilation. Installez l'appareil conformément aux consignes du fabricant.
  - N'installez pas l'appareil à proximité de sources de chaleur telles que des radiateurs, registres de chaleur, poêles ou autres appareils (amplificateurs par exemple) produisant de la chaleur.
  - Respectez la fonction de sécurité de la fiche polarisée ou de mise à la terre. Une fiche polarisée possède deux broches dont l'une est plus large que l'autre. Une fiche de mise à la terre possède deux broches et une patte de mise à la terre. La broche large ou la troisième patte sont fournies pour des raisons de sécurité. Si la fiche fournie n'est pas adaptée à votre support de prise, demandez à un électricien de vous le remplacer.



- Évitez de marcher sur le cordon d'alimentation ou de le pincer, notamment au niveau des fiches, des prises de courant et de son point de sortie sur l'appareil.
- Utilisez uniquement les pièces de fixation/accessoires spécifiés(e)s par le fabricant.
- Utilisez uniquement l'appareil avec le chariot, le socle, le trépied, le support ou la table spécifiés(e) par le fabricant ou vendus(e) avec l'appareil. Lorsque vous utilisez un chariot, prenez garde à ne pas le faire basculer avec l'appareil lorsque vous le déplacez. Vous risqueriez de vous blesser.
- Unplug this apparatus during lightning storms or when unused for long periods of time.
- Refer all servicing to qualified service personnel. Servicing is required when the apparatus has been damaged in any way, such as power-supply cord or plug is damaged, liquid has been spilled or objects have fallen into the apparatus, the apparatus has been exposed to rain or moisture, does not operate normally, or has been dropped.
- Battery usage CAUTION – To prevent battery leakage which may result in bodily injury, property damage, or damage to the unit:
  - The battery (packed or installed) shall not be exposed to excessive heat such as sunshine, fire or the like.
  - Remove the battery when the device is not used for a long time.
- Apparatus shall not be exposed to dripping or splashing.
- Do not place any sources of danger on the apparatus (e.g. liquid filled objects, lighted candles).
- This product may contain lead and mercury. Dispose of these materials may be regulated due to environmental considerations. For disposal or recycling information, please contact your local authorities or the Electronic Industries Alliance [www.eia.org](http://www.eia.org).
- Where the MAINS plug or an appliance coupler is used as the disconnect device, the disconnect device shall remain readily operable.

- Protect the power cord from being walked on or pinched, particularly at plugs, convenience receptacles, and the point where they exit from the apparatus.
- Only use attachments/accessories specified by the manufacturer.
- Use only with the cart, stand, tripod, bracket, or table specified by the manufacturer or sold with the apparatus. When a cart is used, use caution when moving the cart/apparatus combination to avoid injury from tip-over.
- Unplug this apparatus during lightning storms or when unused for long periods of time.
- Refer all servicing to qualified service personnel. Servicing is required when the apparatus has been damaged in any way, such as power-supply cord or plug is damaged, liquid has been spilled or objects have fallen into the apparatus, the apparatus has been exposed to rain or moisture, does not operate normally, or has been dropped.
- Battery usage CAUTION – To prevent battery leakage which may result in bodily injury, property damage, or damage to the unit:
  - The battery (packed or installed) shall not be exposed to excessive heat such as sunshine, fire or the like.
  - Remove the battery when the device is not used for a long time.
- Apparatus shall not be exposed to dripping or splashing.
- Do not place any sources of danger on the apparatus (e.g. liquid filled objects, lighted candles).
- This product may contain lead and mercury. Dispose of these materials may be regulated due to environmental considerations. For disposal or recycling information, please contact your local authorities or the Electronic Industries Alliance [www.eia.org](http://www.eia.org).
- Where the MAINS plug or an appliance coupler is used as the disconnect device, the disconnect device shall remain readily operable.

- Protect the power cord from being walked on or pinched, particularly at plugs, convenience receptacles, and the point where they exit from the apparatus.
- Only use attachments/accessories specified by the manufacturer.
- Use only with the cart, stand, tripod, bracket, or table specified by the manufacturer or sold with the apparatus. When a cart is used, use caution when moving the cart/apparatus combination to avoid injury from tip-over.
- Unplug this apparatus during lightning storms or when unused for long periods of time.
- Refer all servicing to qualified service personnel. Servicing is required when the apparatus has been damaged in any way, such as power-supply cord or plug is damaged, liquid has been spilled or objects have fallen into the apparatus, the apparatus has been exposed to rain or moisture, does not operate normally, or has been dropped.
- Battery usage CAUTION – To prevent battery leakage which may result in bodily injury, property damage, or damage to the unit:
  - The battery (packed or installed) shall not be exposed to excessive heat such as sunshine, fire or the like.
  - Remove the battery when the device is not used for a long time.
- Apparatus shall not be exposed to dripping or splashing.
- Do not place any sources of danger on the apparatus (e.g. liquid filled objects, lighted candles).
- This product may contain lead and mercury. Dispose of these materials may be regulated due to environmental considerations. For disposal or recycling information, please contact your local authorities or the Electronic Industries Alliance [www.eia.org](http://www.eia.org).
- Where the MAINS plug or an appliance coupler is used as the disconnect device, the disconnect device shall remain readily operable.

- Protect the power cord from being walked on or pinched, particularly at plugs, convenience receptacles, and the point where they exit from the apparatus.
- Only use attachments/accessories specified by the manufacturer.
- Use only with the cart, stand, tripod, bracket, or table specified by the manufacturer or sold with the apparatus. When a cart is used, use caution when moving the cart/apparatus combination to avoid injury from tip-over.
- Unplug this apparatus during lightning storms or when unused for long periods of time.
- Refer all servicing to qualified service personnel. Servicing is required when the apparatus has been damaged in any way, such as power-supply cord or plug is damaged, liquid has been spilled or objects have fallen into the apparatus, the apparatus has been exposed to rain or moisture, does not operate normally, or has been dropped.
- Battery usage CAUTION – To prevent battery leakage which may result in bodily injury, property damage, or damage to the unit:
  - The battery (packed or installed) shall not be exposed to excessive heat such as sunshine, fire or the like.
  - Remove the battery when the device is not used for a long time.
- Apparatus shall not be exposed to dripping or splashing.
- Do not place any sources of danger on the apparatus (e.g. liquid filled objects, lighted candles).
- This product may contain lead and mercury. Dispose of these materials may be regulated due to environmental considerations. For disposal or recycling information, please contact your local authorities or the Electronic Industries Alliance [www.eia.org](http://www.eia.org).
- Where the MAINS plug or an appliance coupler is used as the disconnect device, the disconnect device shall remain readily operable.

- Protect the power cord from being walked on or pinched, particularly at plugs, convenience receptacles, and the point where they exit from the apparatus.
- Only use attachments/accessories specified by the manufacturer.
- Use only with the cart, stand, tripod, bracket, or table specified by the manufacturer or sold with the apparatus. When a cart is used, use caution when moving the cart/apparatus combination to avoid injury from tip-over.
- Unplug this apparatus during lightning storms or when unused for long periods of time.
- Refer all servicing to qualified service personnel. Servicing is required when the apparatus has been damaged in any way, such as power-supply cord or plug is damaged, liquid has been spilled or objects have fallen into the apparatus, the apparatus has been exposed to rain or moisture, does not operate normally, or has been dropped.
- Battery usage CAUTION – To prevent battery leakage which may result in bodily injury, property damage, or damage to the unit:
  - The battery (packed or installed) shall not be exposed to excessive heat such as sunshine, fire or the like.
  - Remove the battery when the device is not used for a long time.
- Apparatus shall not be exposed to dripping or splashing.
- Do not place any sources of danger on the apparatus (e.g. liquid filled objects, lighted candles).
- This product may contain lead and mercury