

DVF series Transmitter FCC Certification Application

Application for Equipment Certification

EXHIBIT H ATLAS Mobile Cabinet Photos

1. Overall photos

Photos of the DVF5000 transmitter can be seen in EXHIBIT M – TEST REPORT, on pages 7, 9 and 10.

2. Cabinet Internal Photos

This set of photos shows detailed views of the RF I/O distribution and the liquid coolant distribution to and from the PA (Power Amplifier) modules.

PA Module RF Input and Control Connections



The photo is of the RF splitter assembly and the distribution of control signals to the PA (Power Amplifier) Modules.

DVF series Transmitter FCC Certification Application

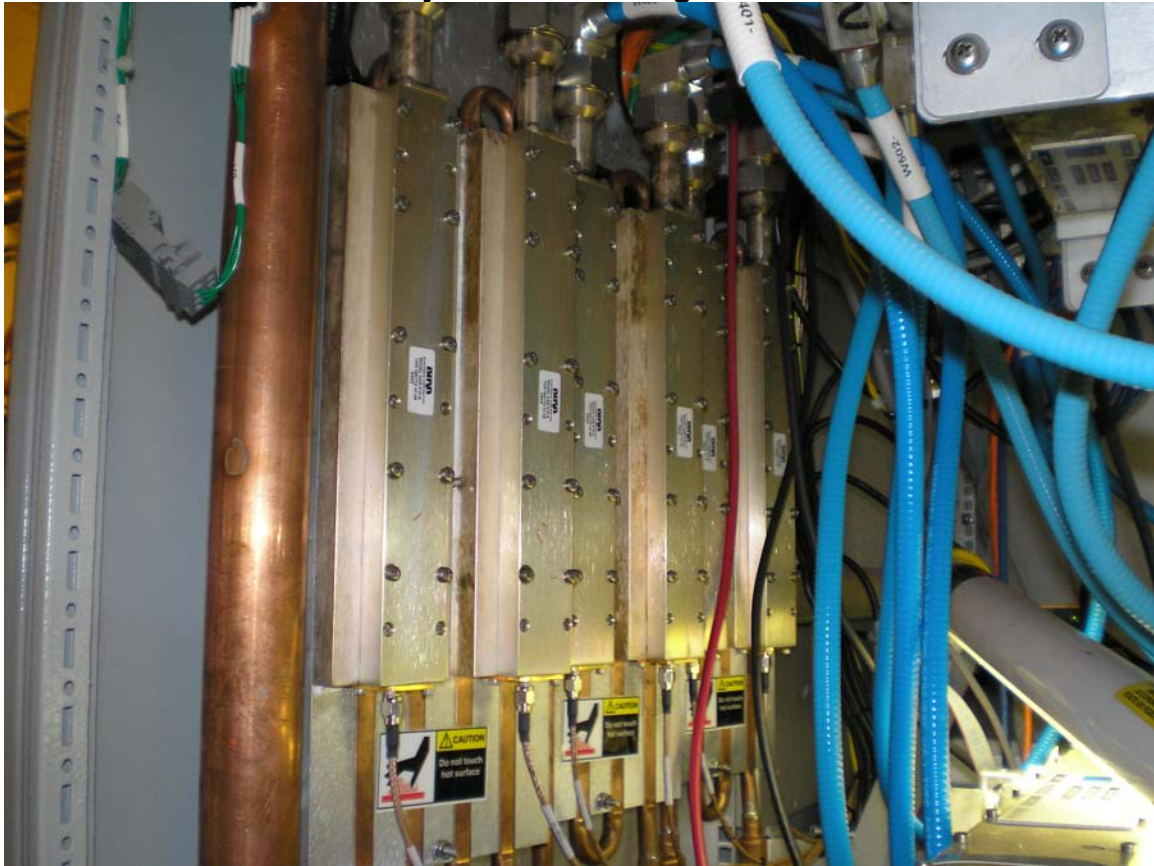
RF Combiners and Reject Loads



This photo of the rear upper area of the cabinet shows the two 3dB 4-way combining assemblies, above each other at the center, and the RF Load cooling plate on the left. Coolant lines from the cabinet connection points at the top of the cabinet can be seen at the left and the right. Coolant is distributed to all modules and to a cooling plate on which are mounted the reject loads.

DVF series Transmitter FCC Certification Application

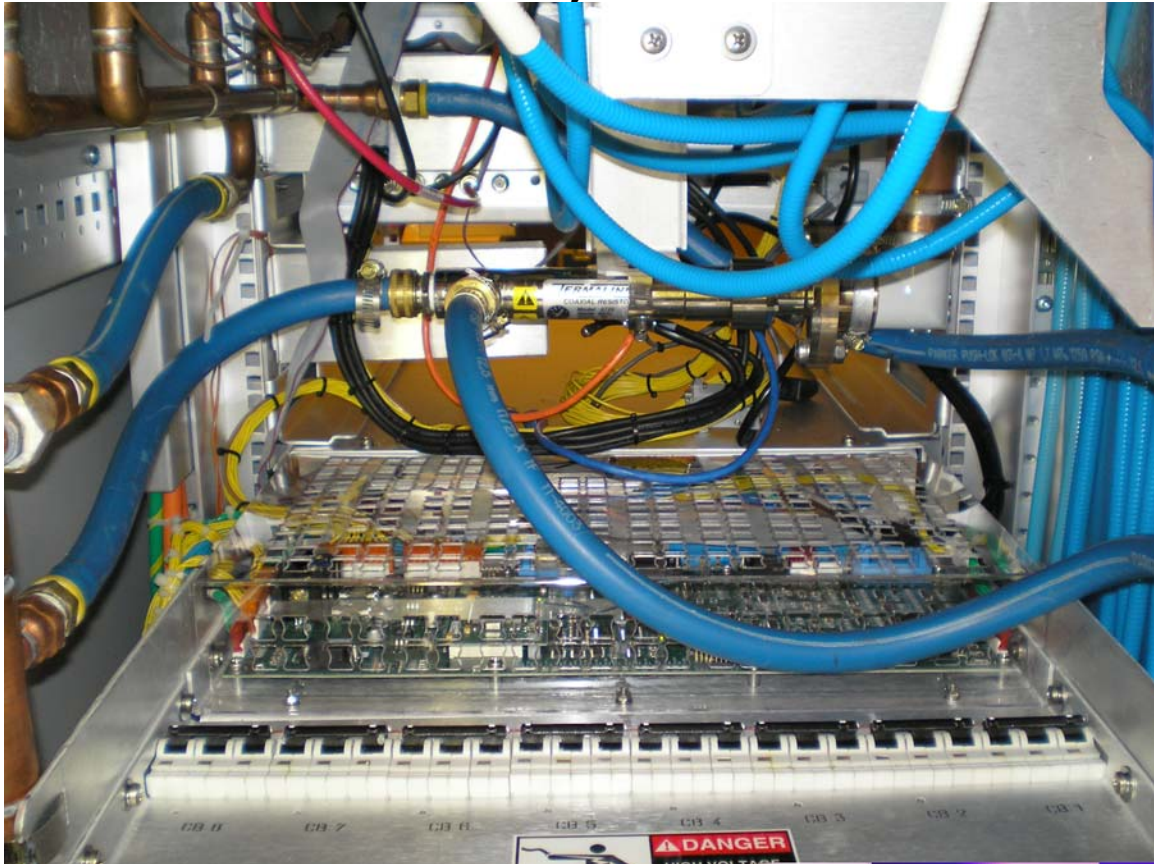
Reject Load Cooling Plate



This photo is of the reject loads mounted on the cooling plate.

DVF series Transmitter FCC Certification Application

Main Reject Load



A single 3 dB combiner combines the outputs of the two 4-way hybrid combiners. The reject load for the single 3 dB combiner is shown mounted horizontally, with coolant lines connected.

DVF series Transmitter FCC Certification Application

Liquid Coolant Distribution



In this photo, the coolant distribution to the input and output connections of the either modules can be seen.