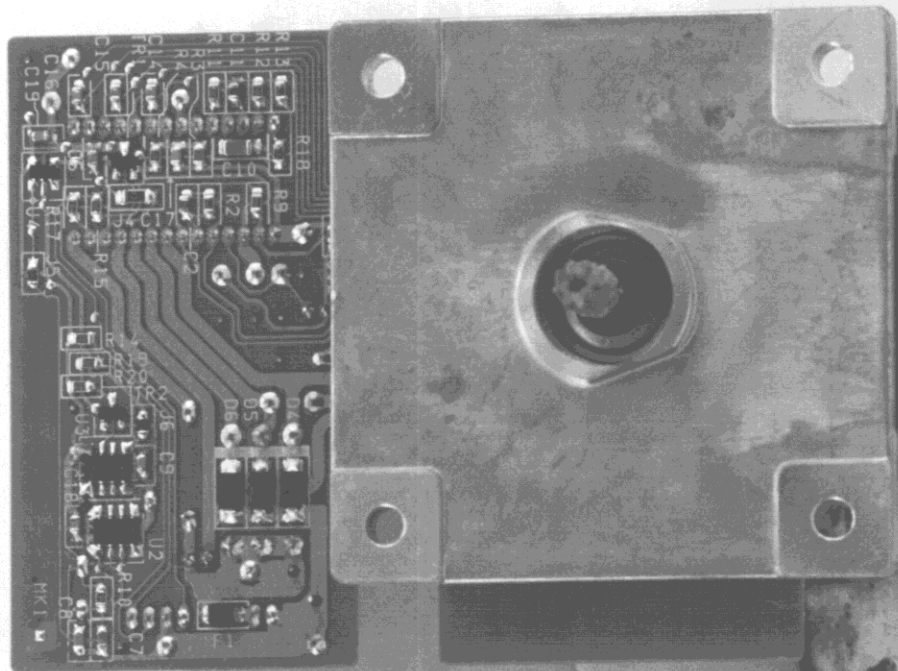




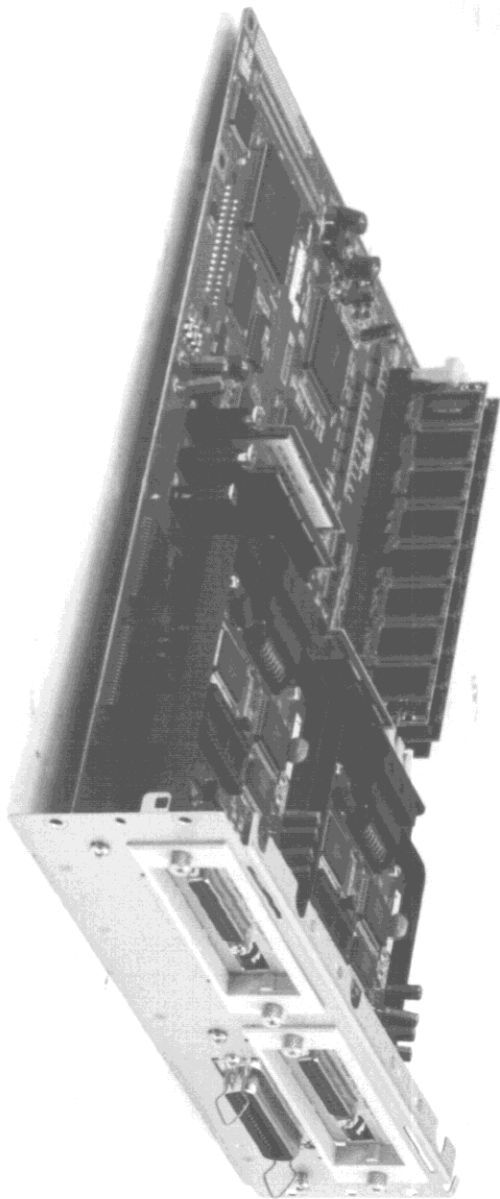
FCC ID : BKMFBYBA-1

29) Rear view of the photo conductor unit.



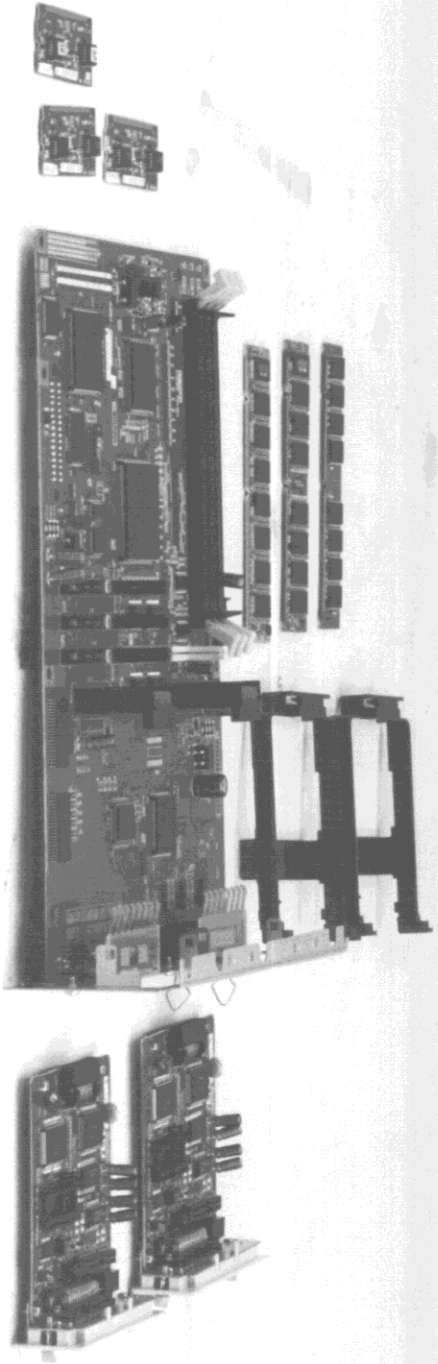
FCC ID : BKMFBYBA-1

28) No.3 Motor & Motor control board side B.



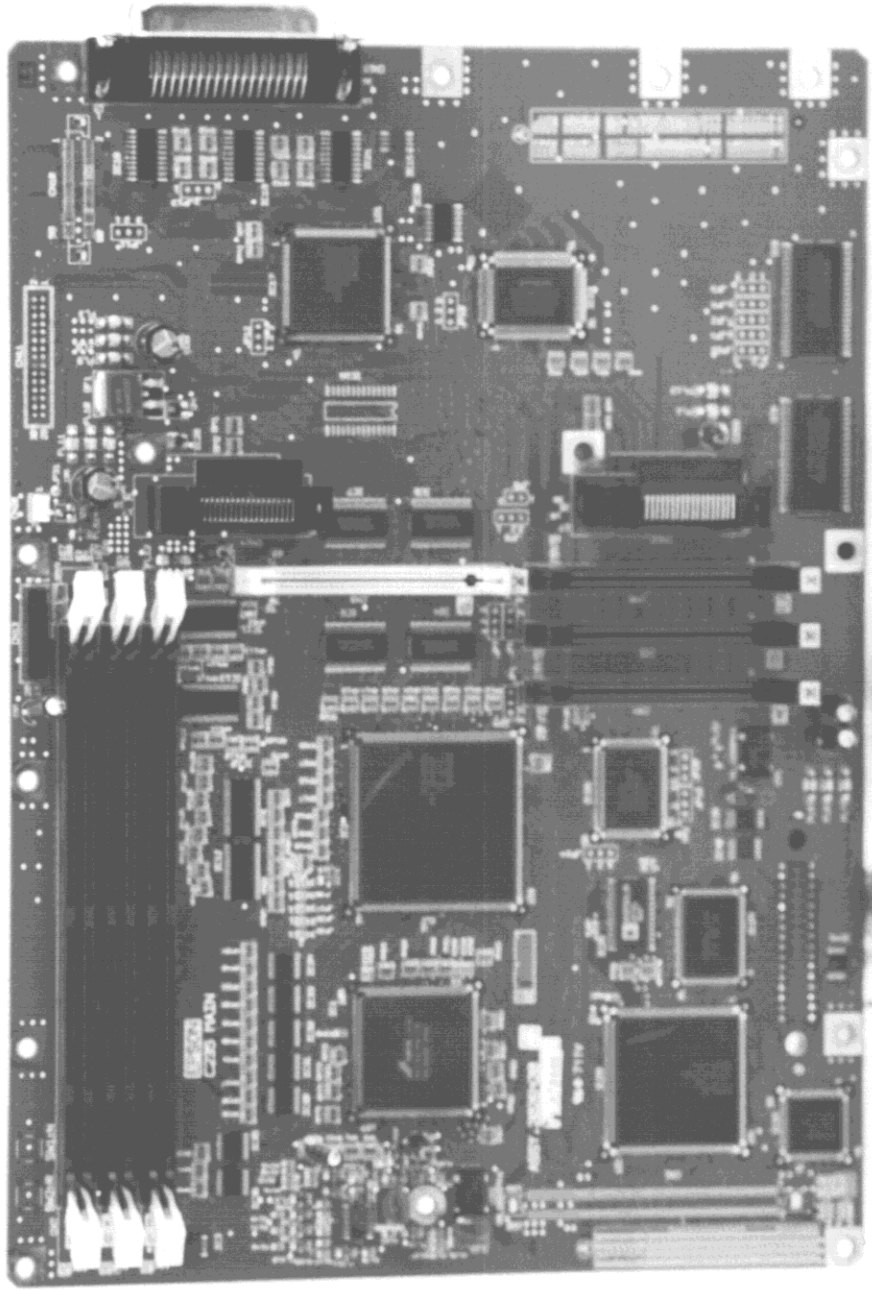
FCC ID : BKMEBYBA-1

32) The Main board with it's options.



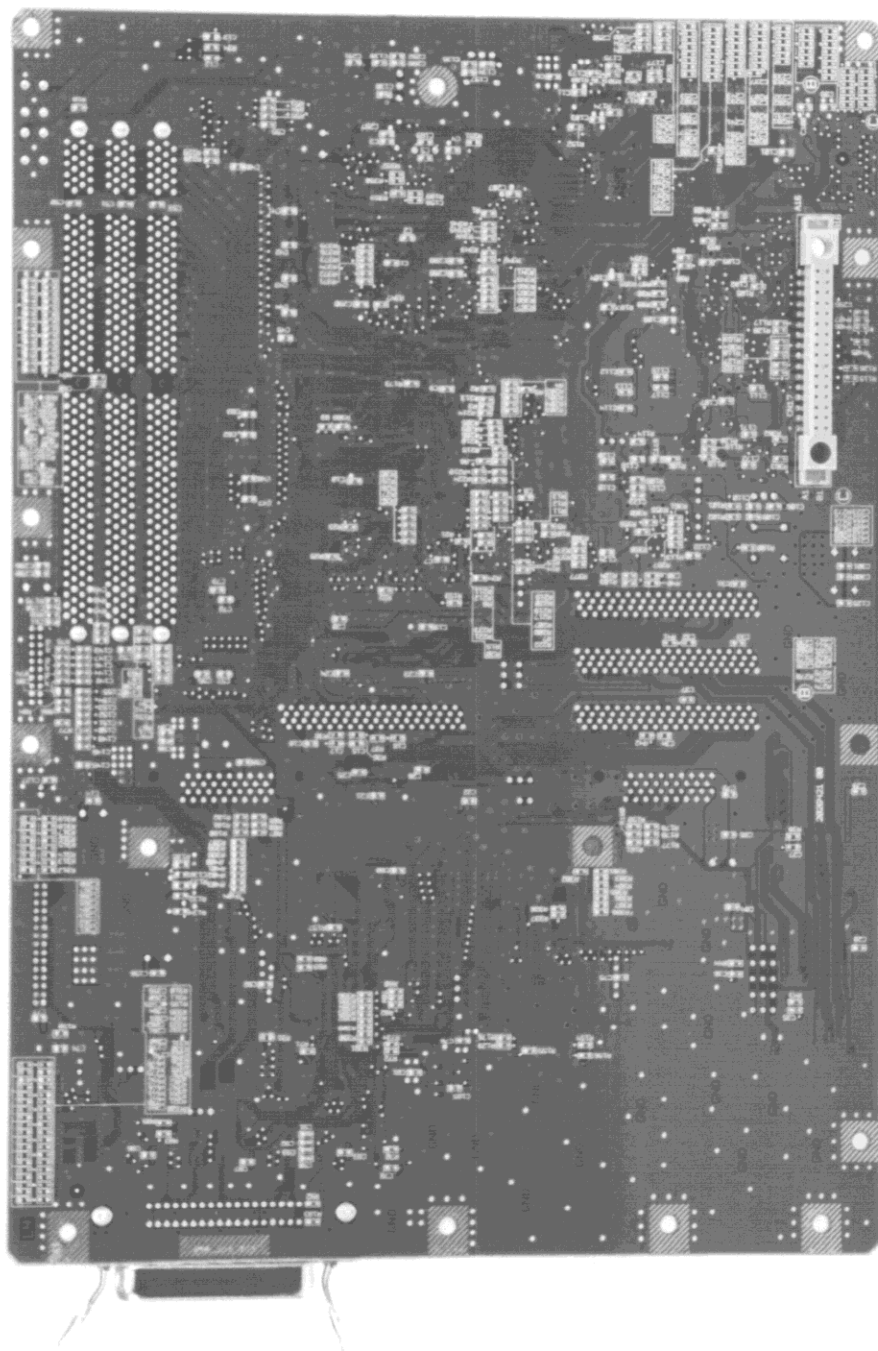
FCC ID : BKMPBYBA-1

33) The Main board with it's options not mounted.



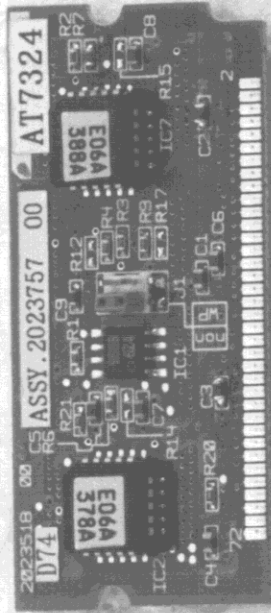
FCC ID : BKMFBYBA-1

34) The Main board side A.



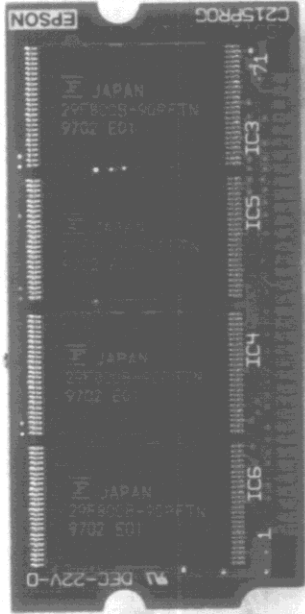
FCC ID : BKMFBYBA-1

35) The Main board side B.



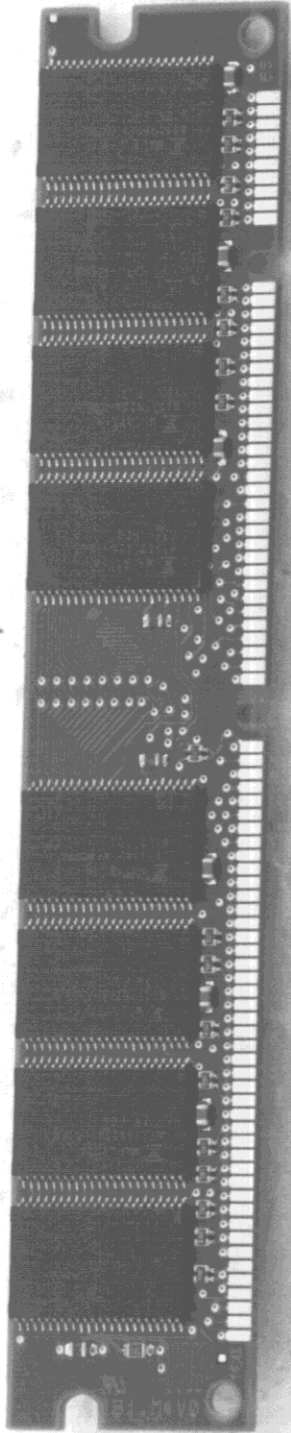
FCC ID : BKMFBYBA-1

36) The flash ROM board side A.



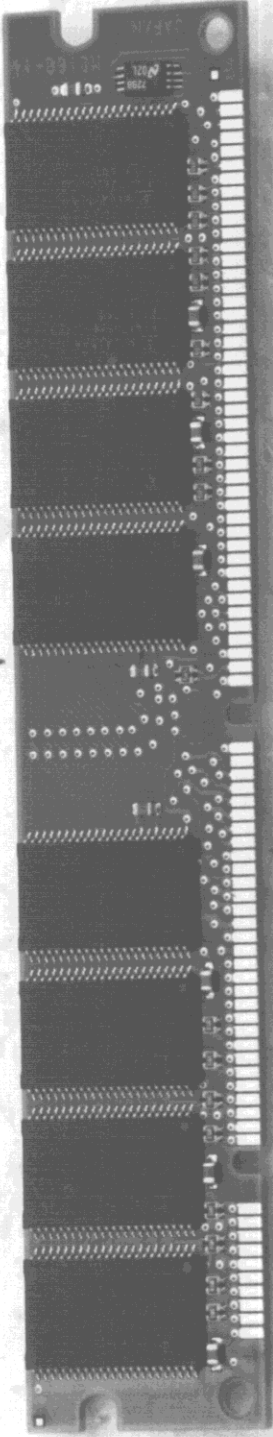
FCC ID : BKMFYBA-1

37) The flash ROM board side B.

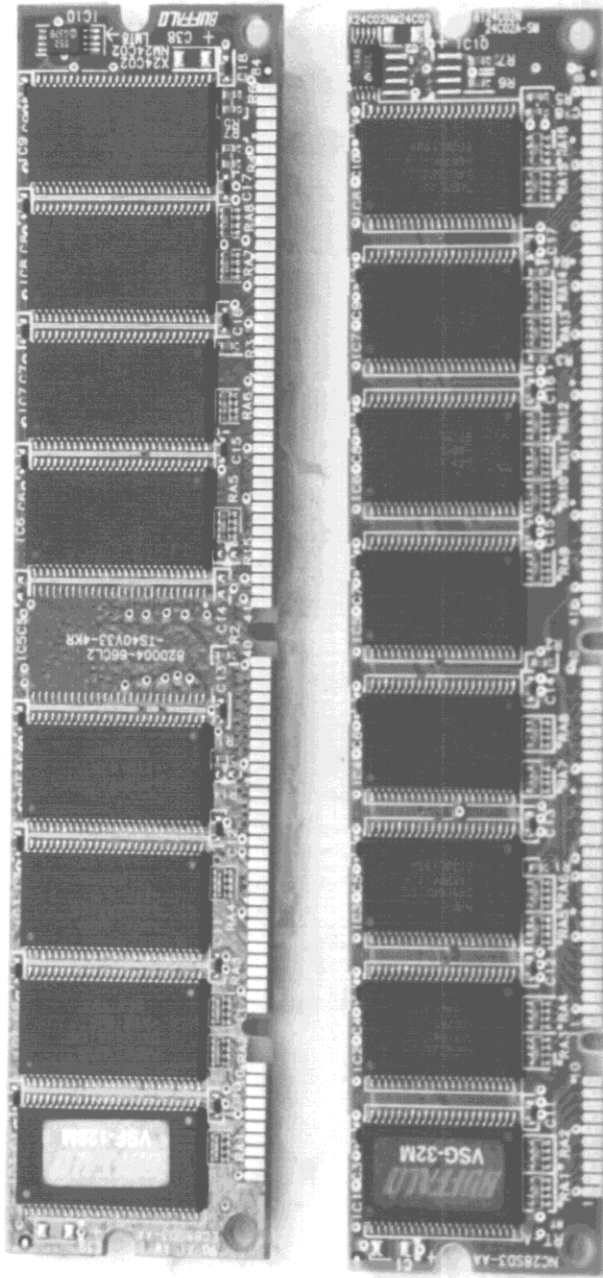


FCC ID : BKMFYBA-1

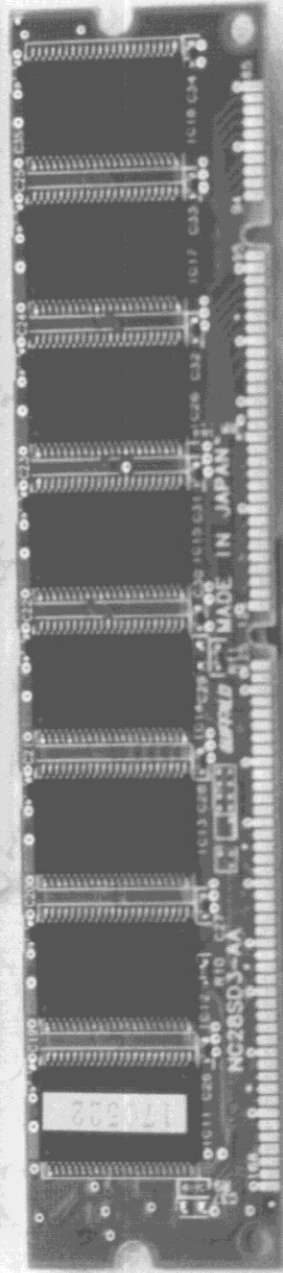
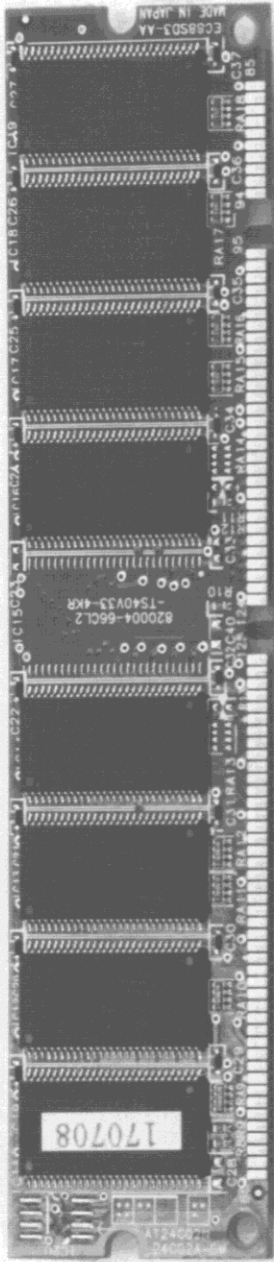
38) The built-in SD-RAM DIMM side A.



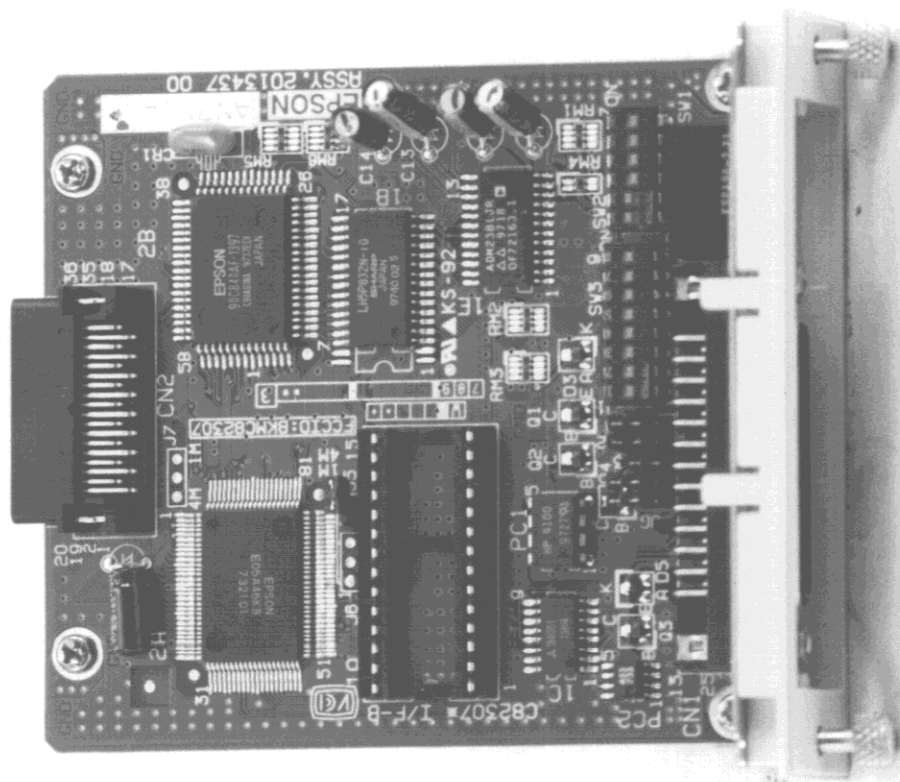
FCC ID : BKMFBYBA-1
39) The built-in SD-RAM DIMM side B.



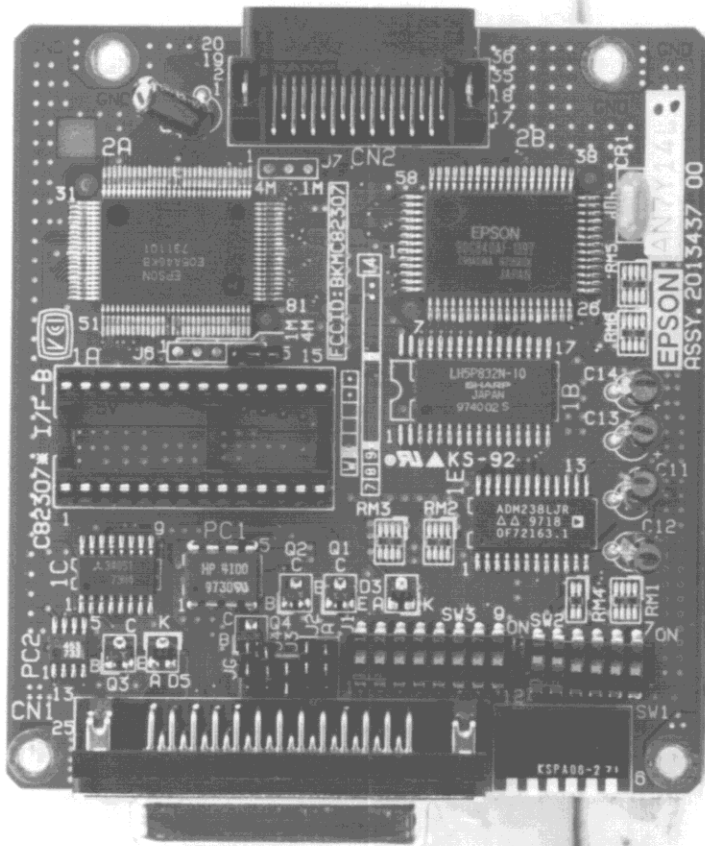
FCC ID : BKMFBYA-1
40) The optional SD-RAM DIMM side A.



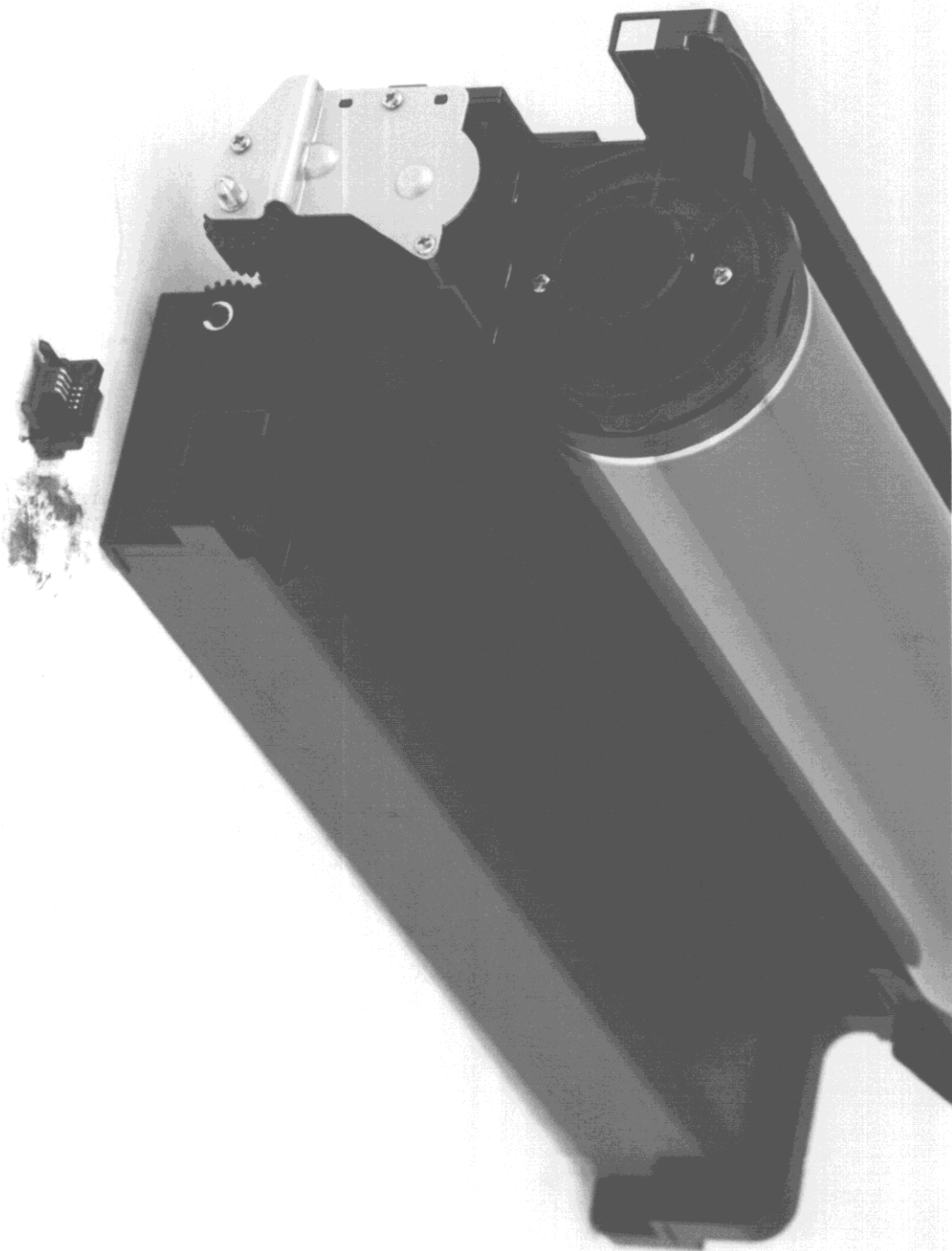
FCC ID : BKMFYBA-1
41) The optional SD-RAM DIMM side B.



FCC ID : BKMFBYA-1
42) The optional serial interface card.
(Model:C82307)

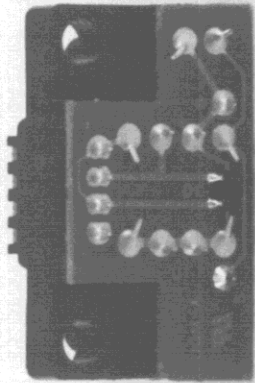


FCC ID : BKMFYBA-1
43) The optional serial interface card side A. (Model:C82307)



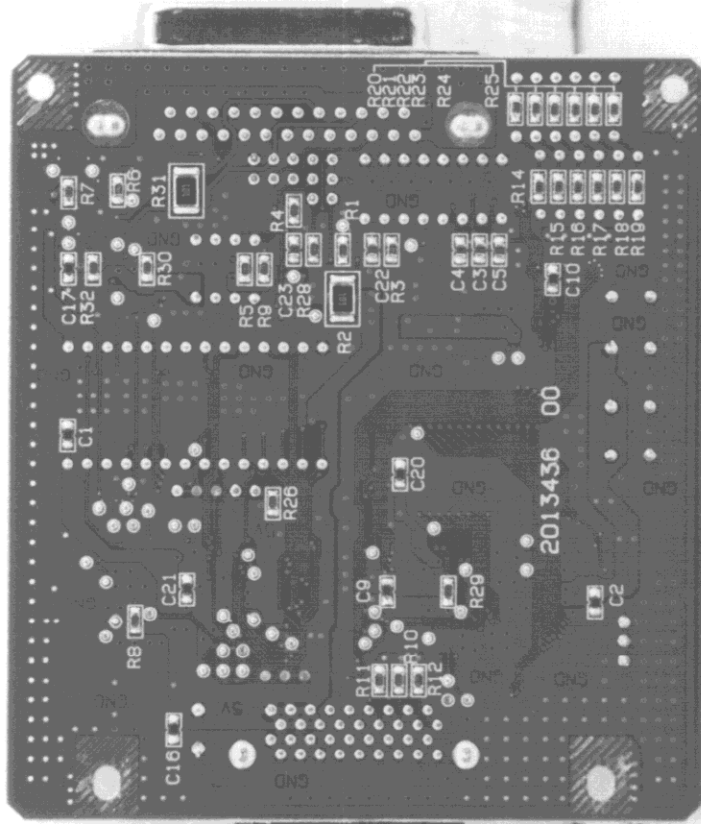
FCC ID : BKMFBYMA-1

30) Rear view of the photo conductor unit
with EE-PROM unit not mounted.

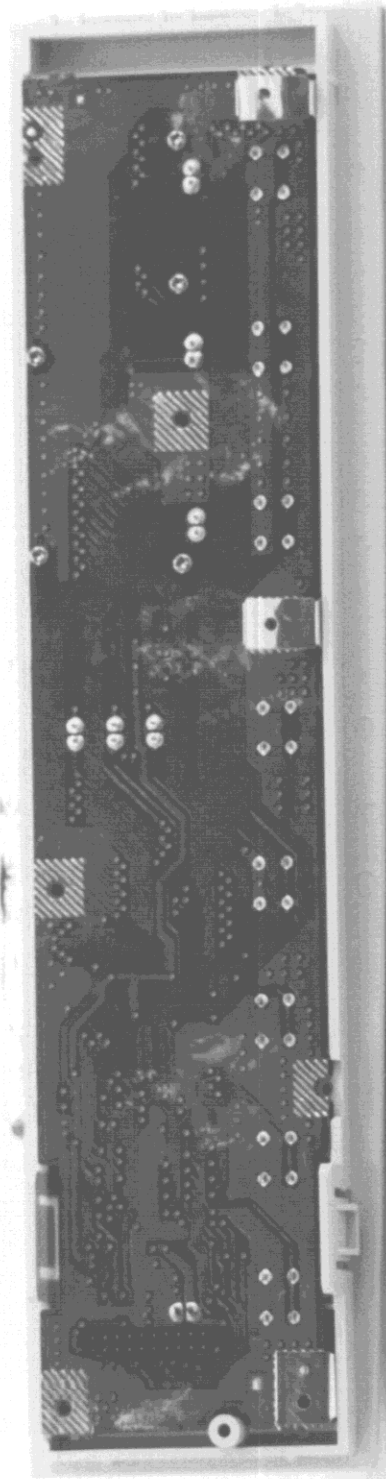


FCC ID : BKMFYBA-1

31) Rear view of the EE-PROM unit.

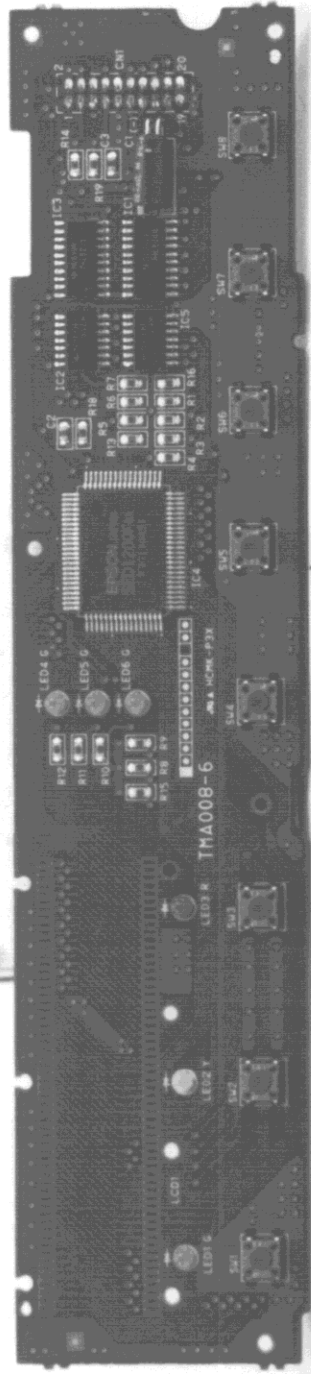


FCC ID : BKMFBYBA-1
44) The optional serial interface card
side B. (Model:C82307)

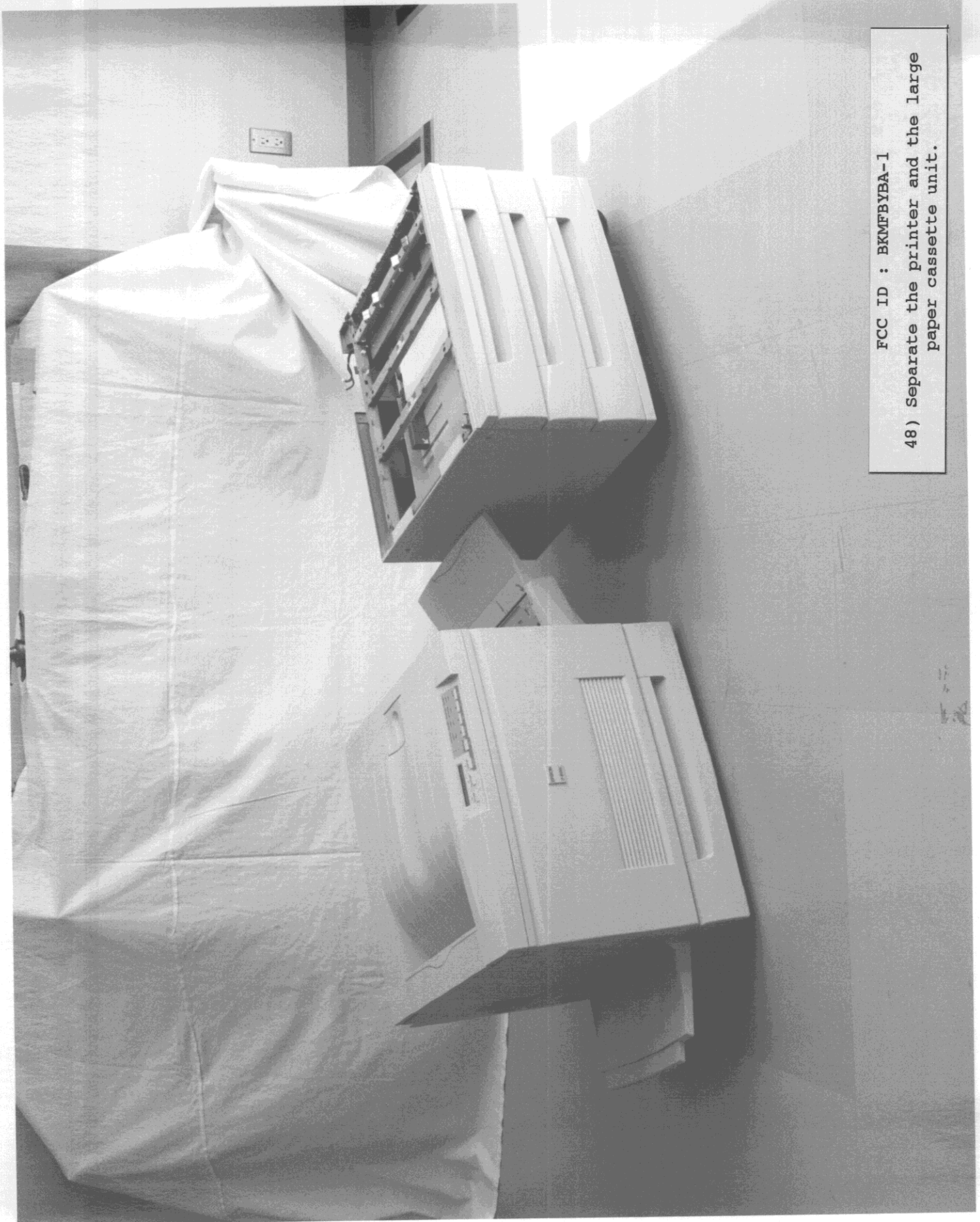


FCC ID : BKMFBYBA-1

47) The operation panel board side B.



FCC ID : BKMFBYBA-1
46) The operation panel board side A.



FCC ID : BKMFBYBA-1

48) Separate the printer and the large paper cassette unit.