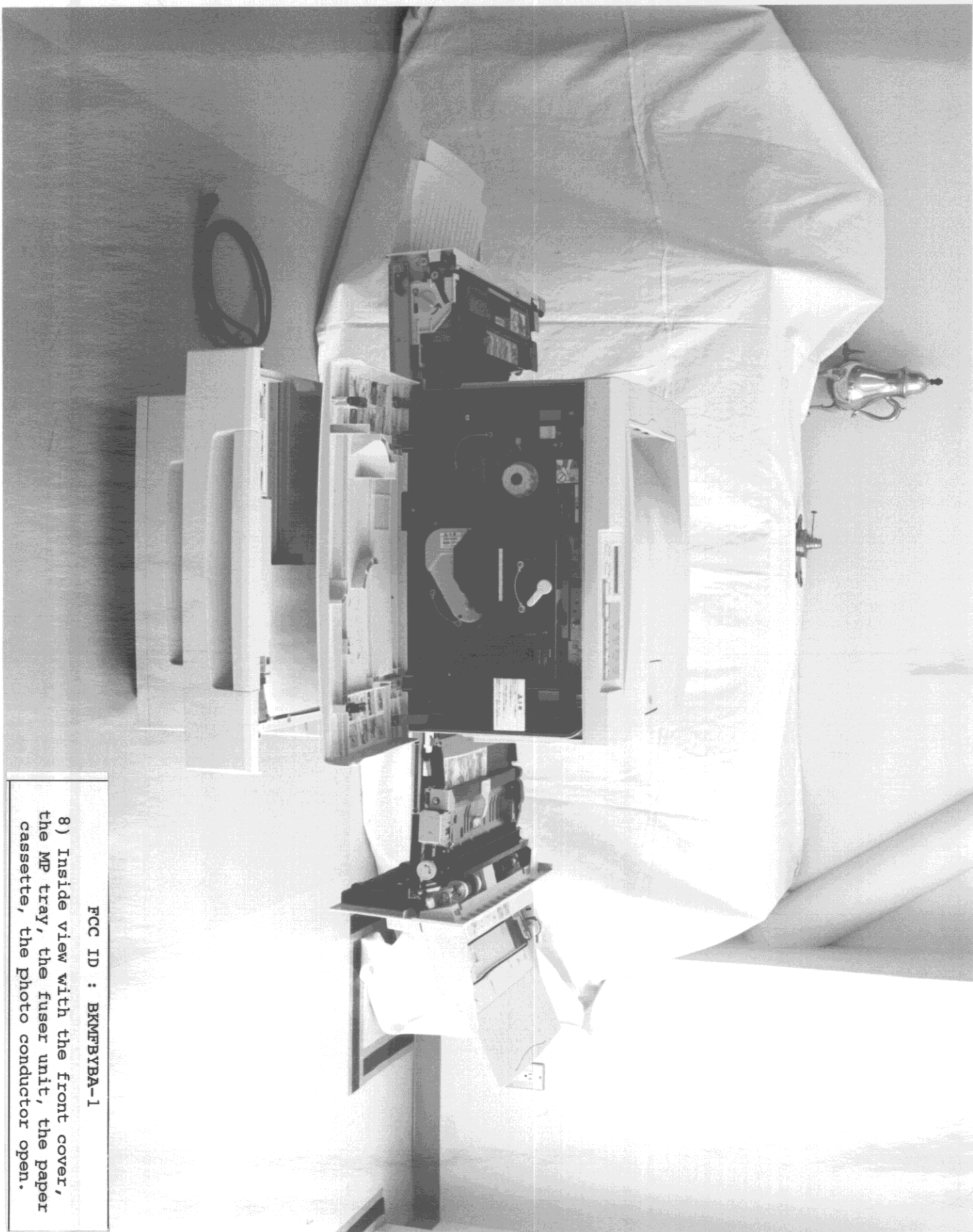


FCC ID : BKMFBYBA-1
6) Inside view with the front cover open.



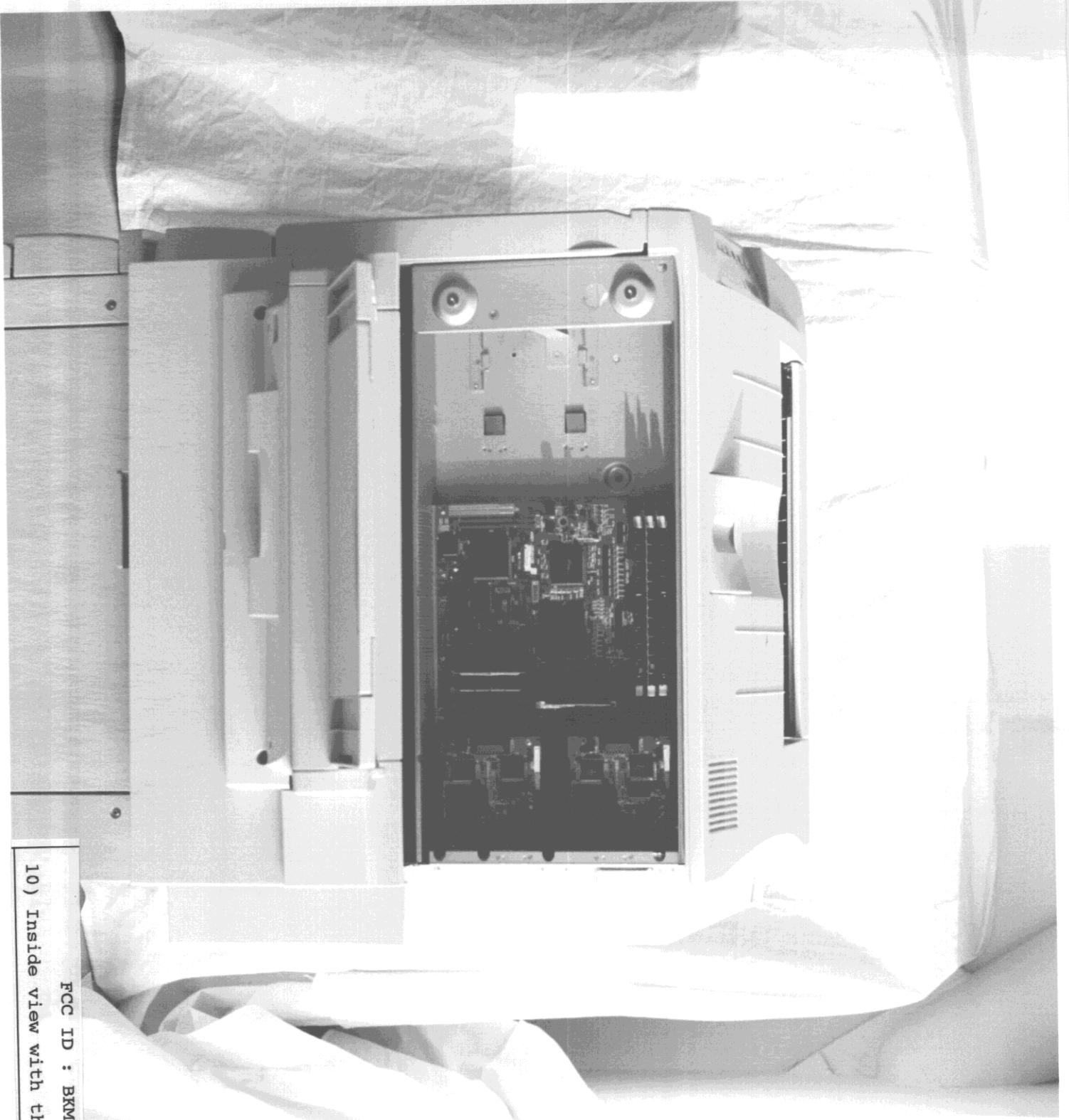
FCC ID : BKMFBYBA-1

8) Inside view with the front cover, the MP tray, the fusor unit, the paper cassette, the photo conductor open.

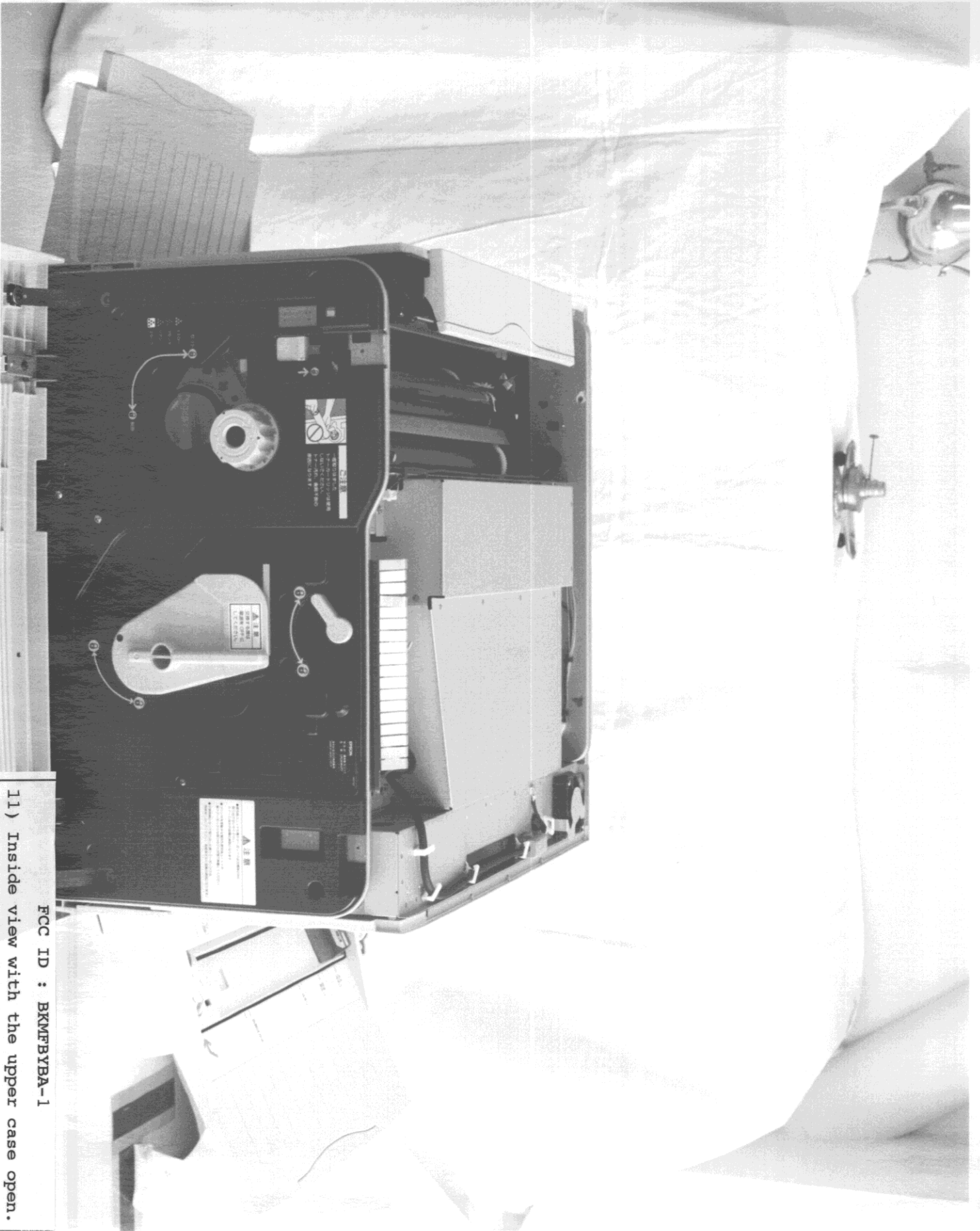


7) Inside view with the front cover,
the photo conductor open.

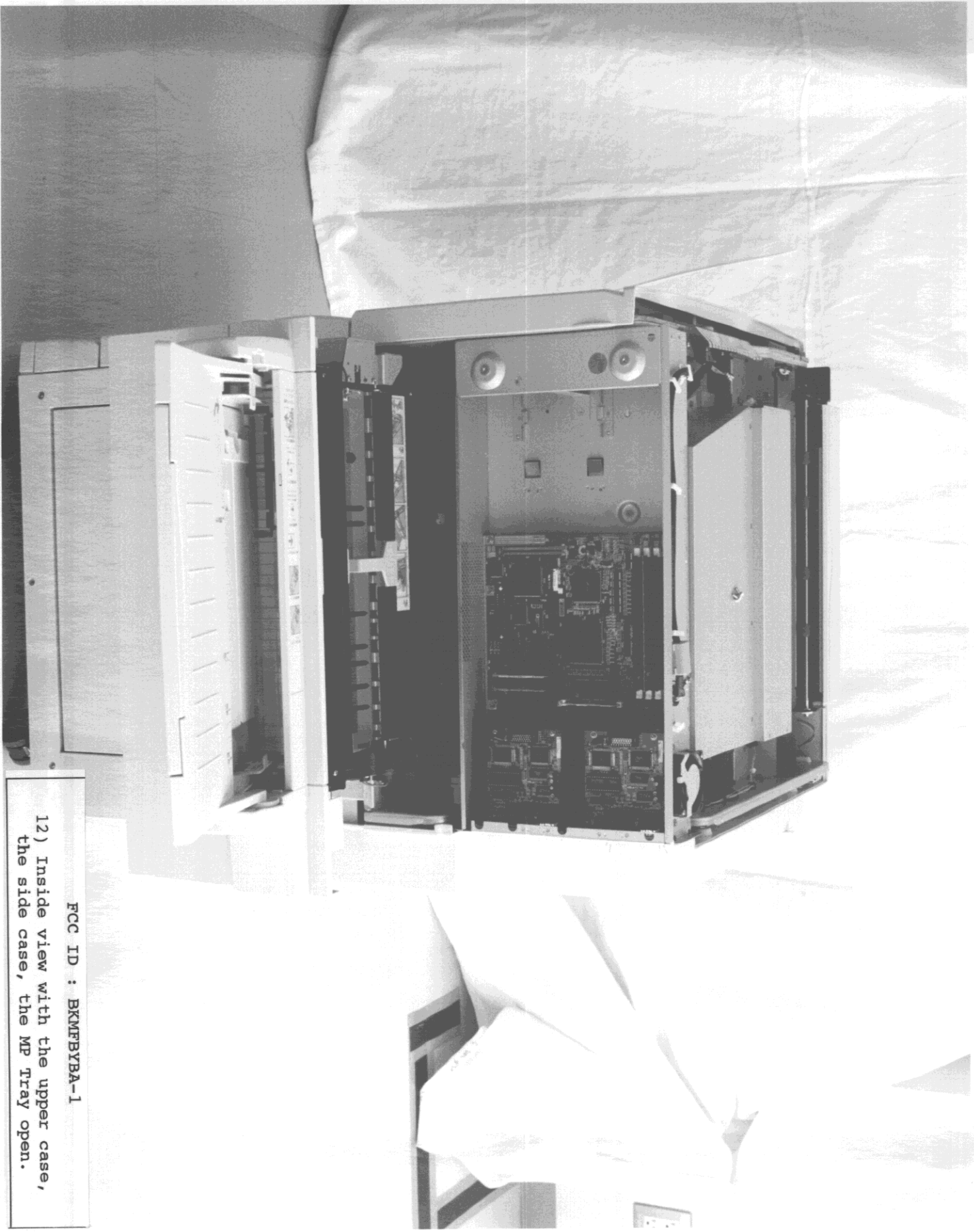
FCC ID : BKMFBYBA-1



FCC ID : BKMFYBA-1
10) Inside view with the side case open.



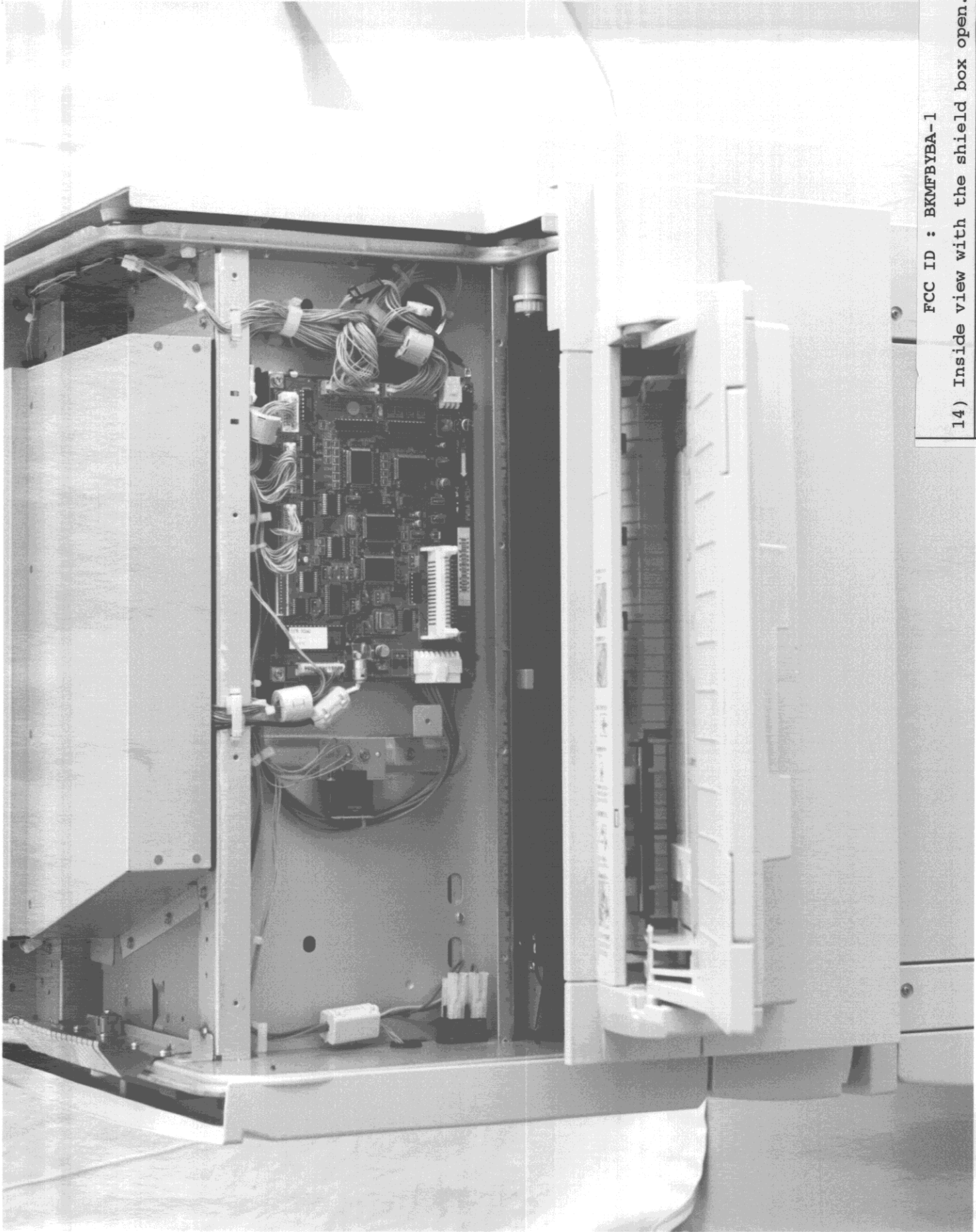
FCC ID : BKMFBYBA-1
11) Inside view with the upper case open.



FCC ID : BKMFBYBA-1
12) Inside view with the upper case,
the side case, the MP Tray open.

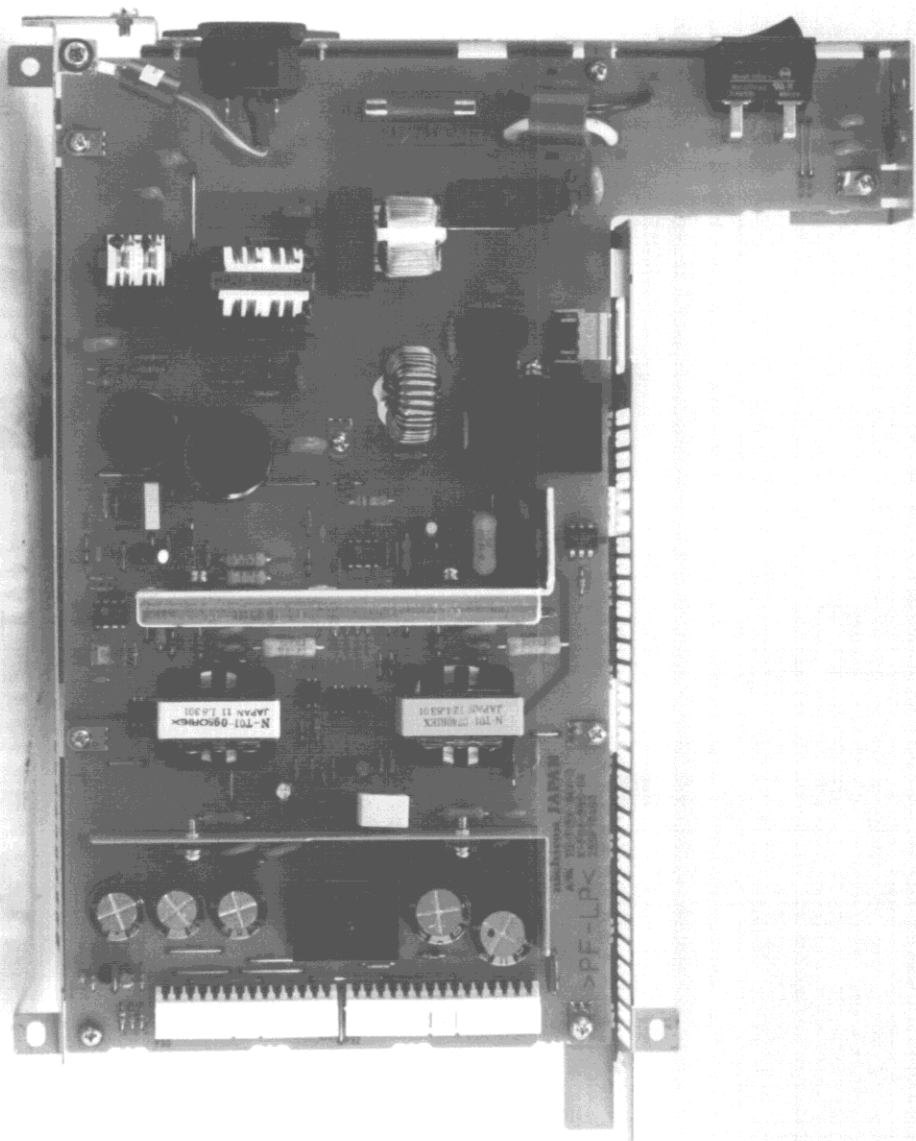


FCC ID : BKMFBYBA-1
13) Inside view with the main board
not mounted.

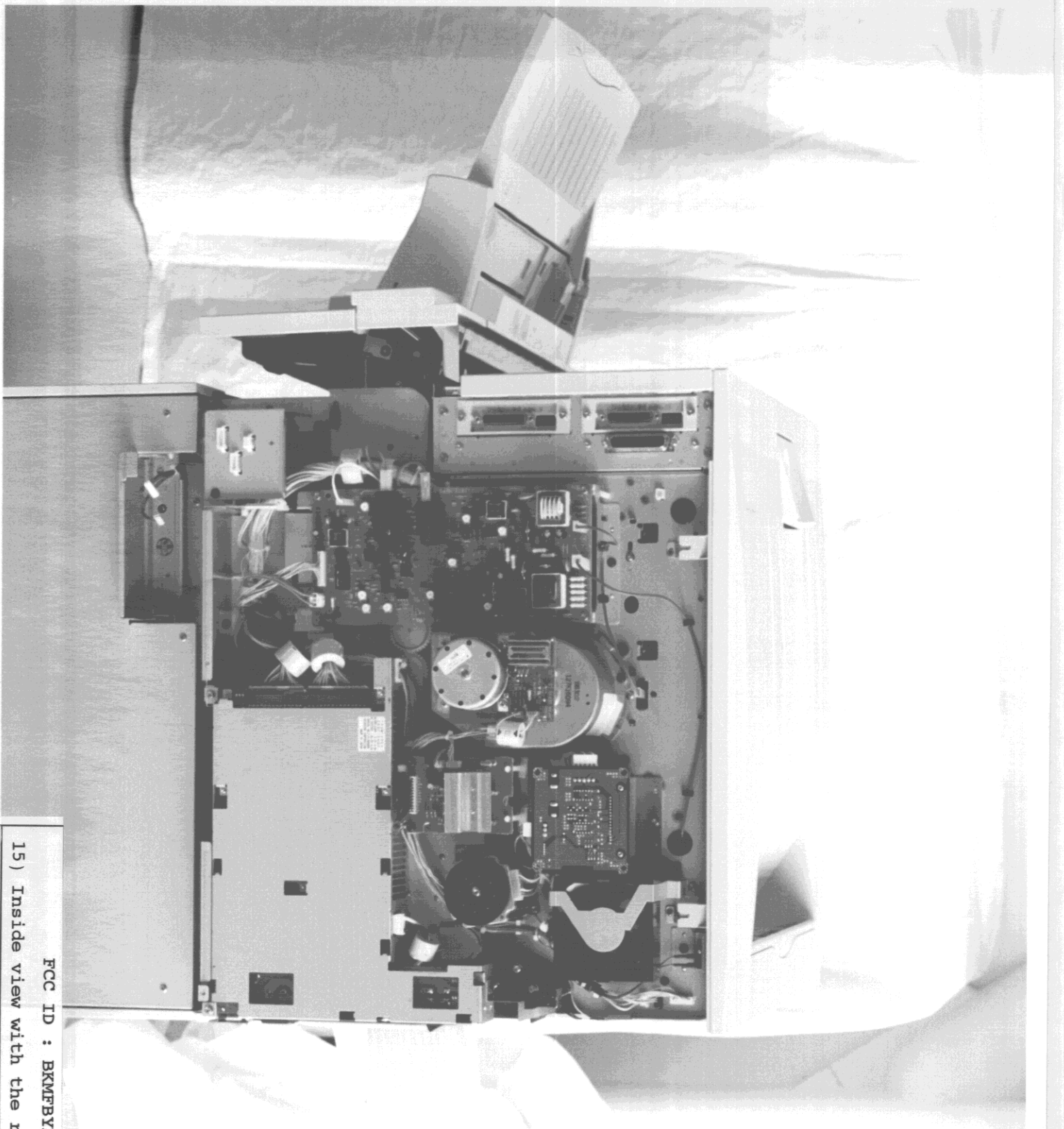


FCC ID : BKMFBYBA-1

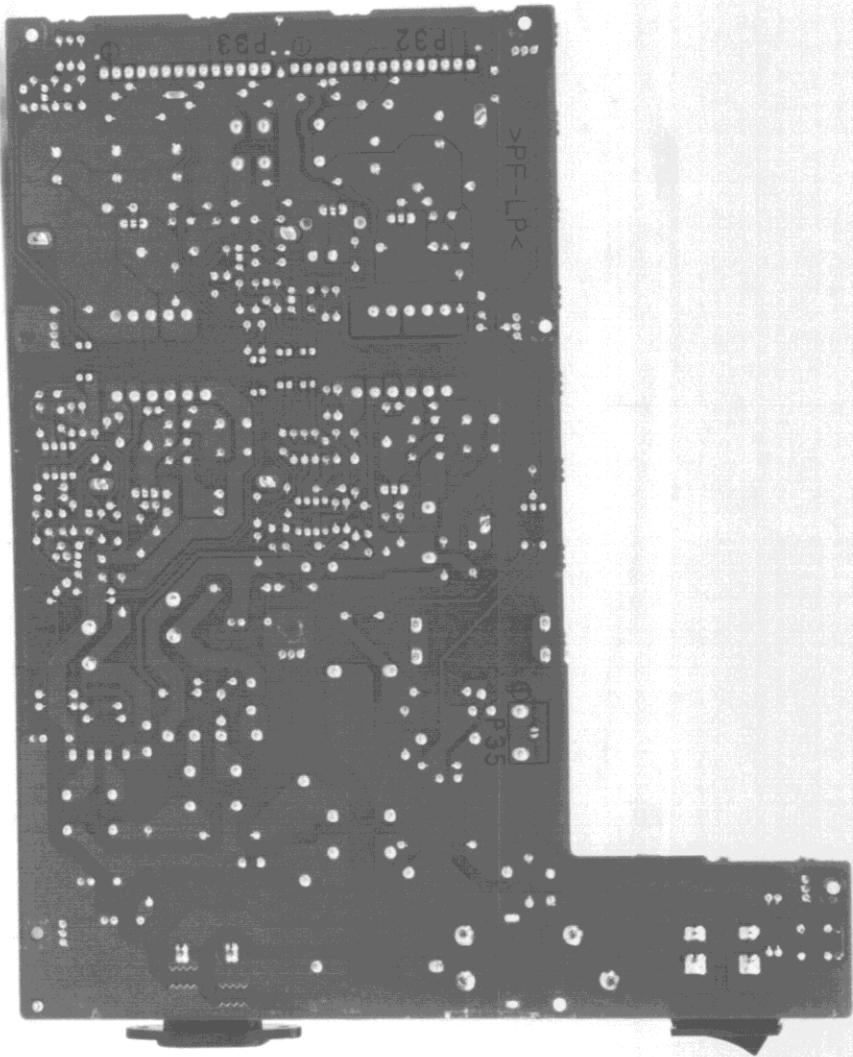
14) Inside view with the shield box open.



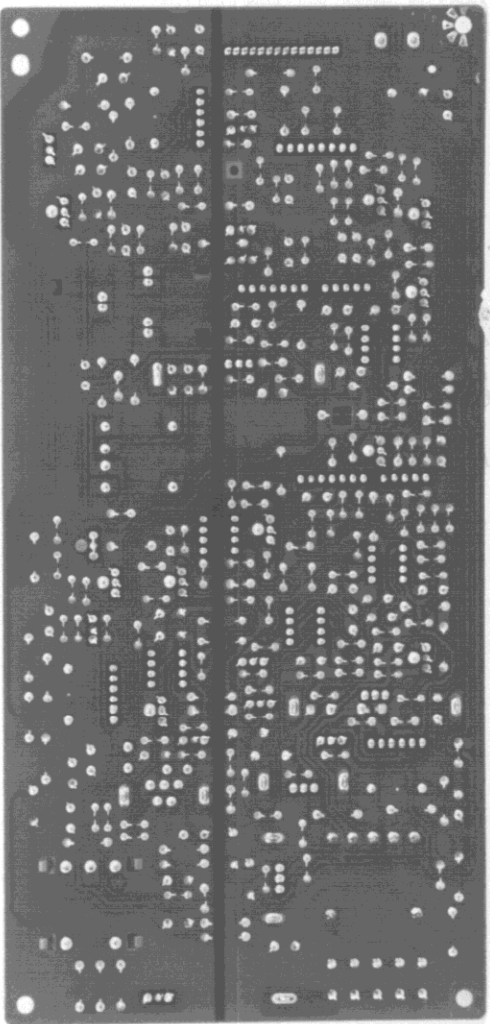
FCC ID : BKMPBYBA-1
16) Low voltage power supply board side A.



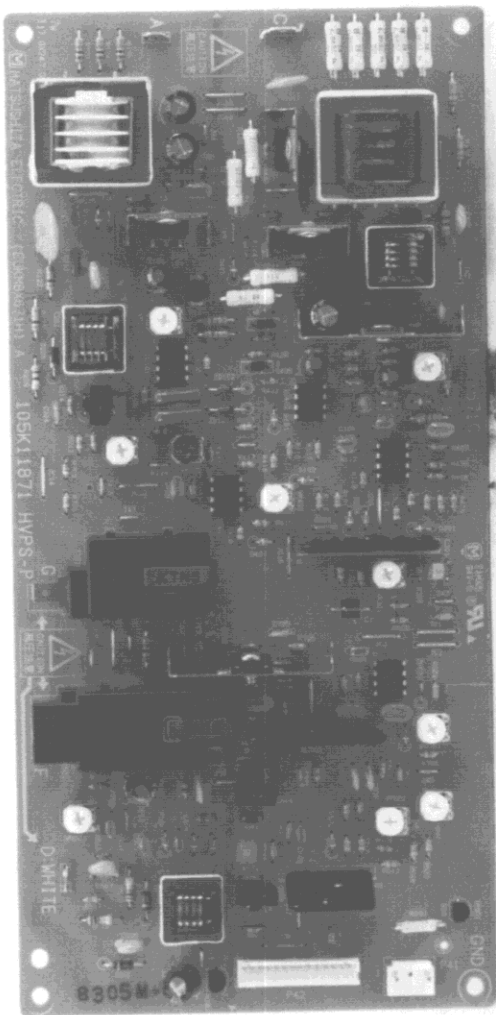
FCC ID : BKMFBYBA-1
15) Inside view with the rear case open.



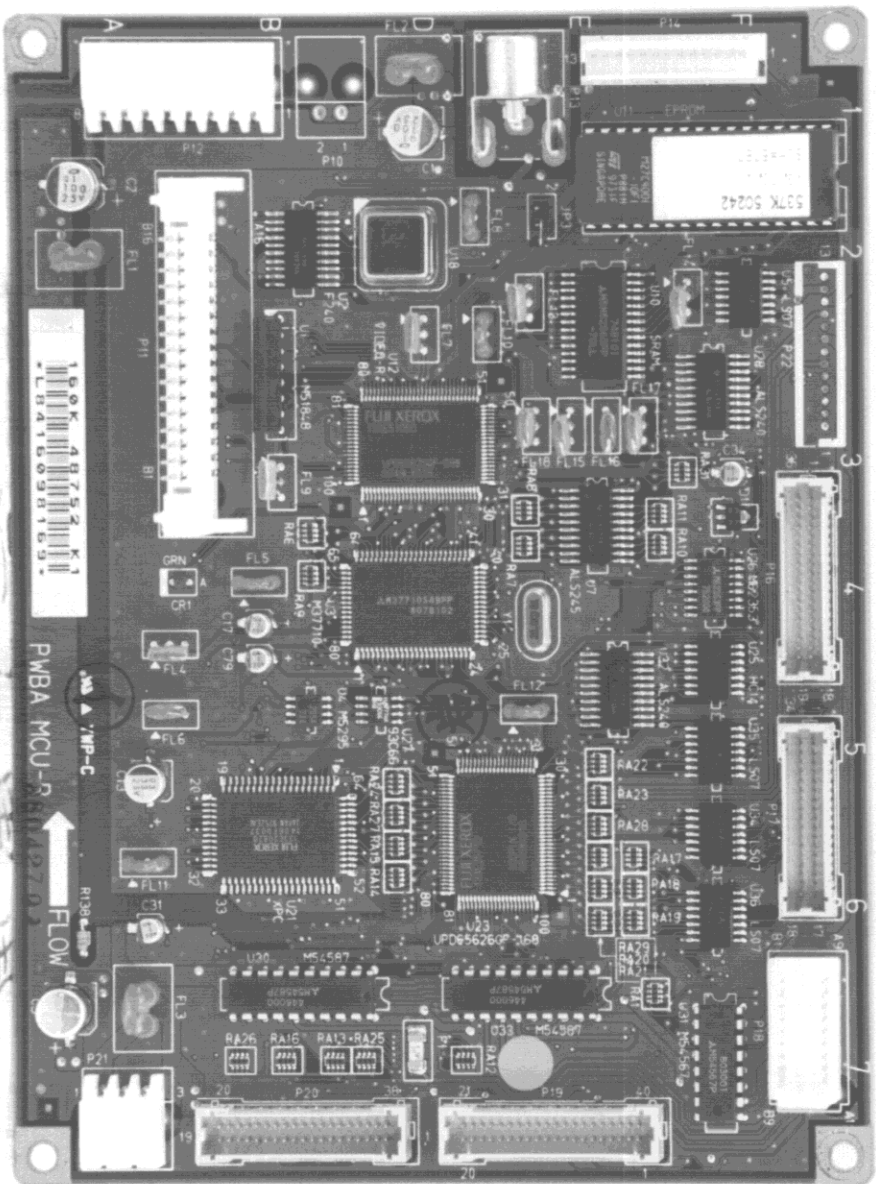
FCC ID : BKMFBYBA-1
17) Low voltage power supply board side B.



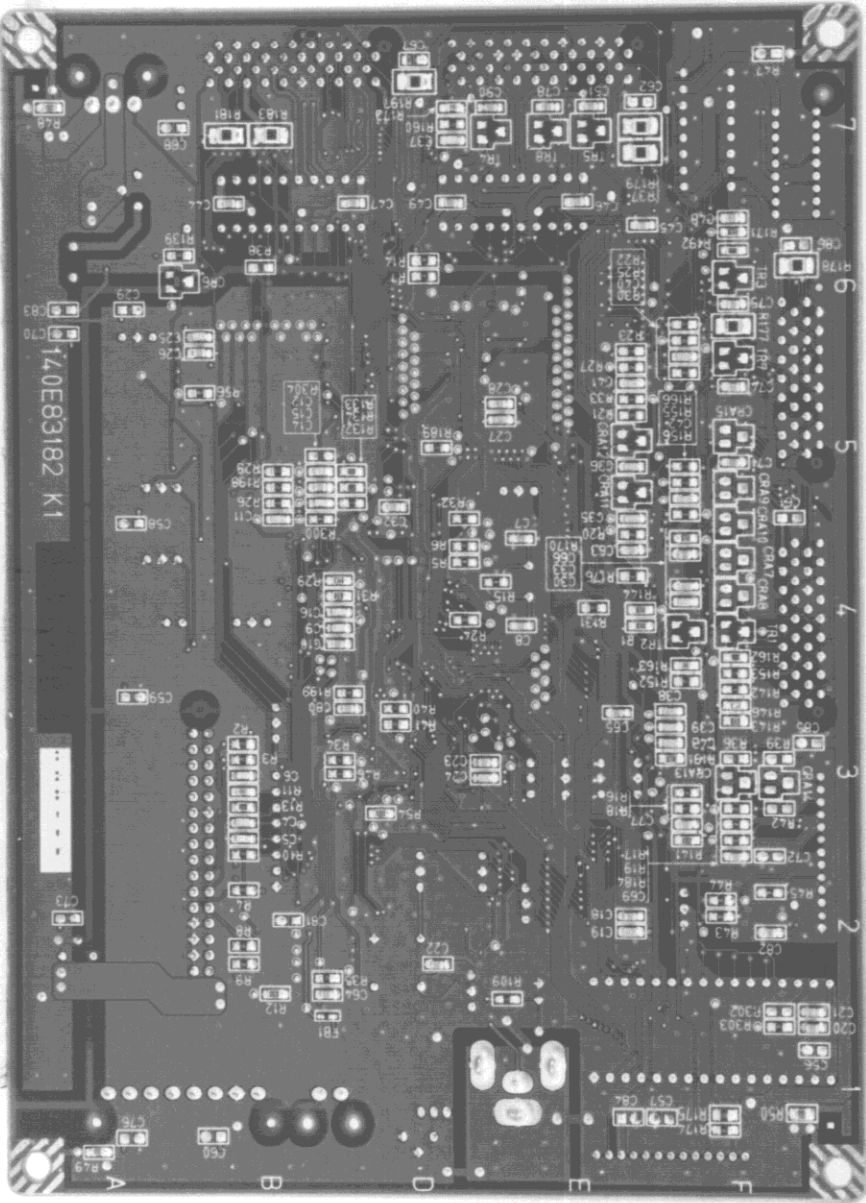
FCC ID : BKMPBYBA-1
19) High voltage power supply board side B.



FCC ID : BKMFBYBA-1
18) High voltage power supply board side A.



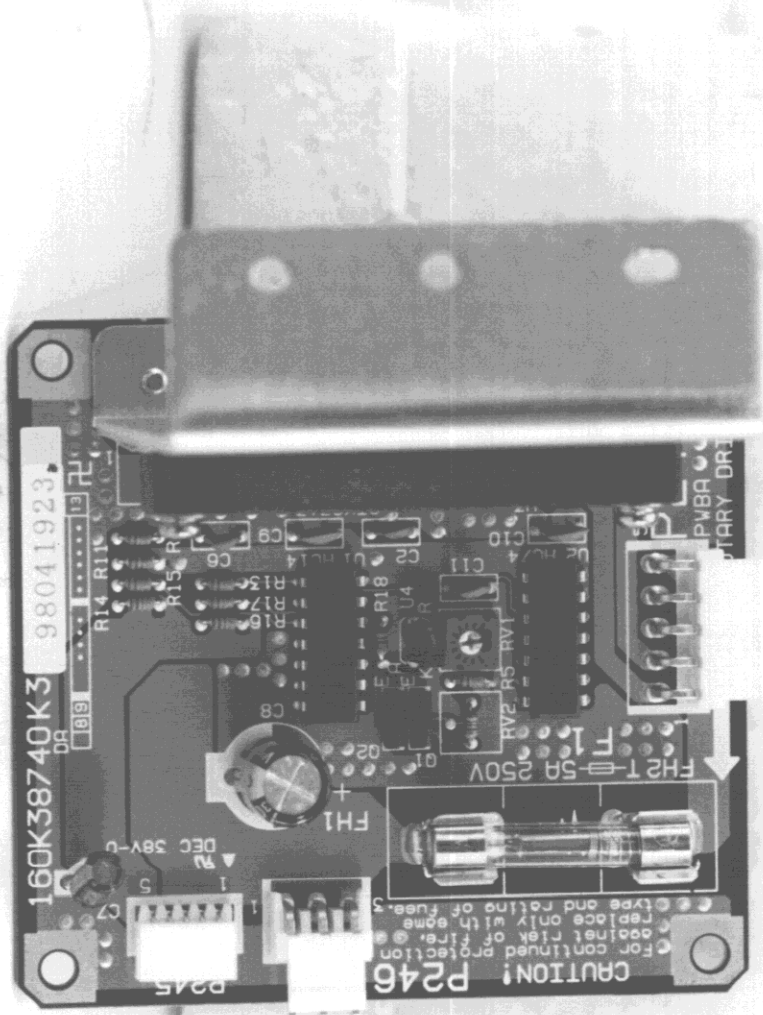
FCC ID : BKMFBYBA-1
20) Mechanism control board side A.



140E83182 K1

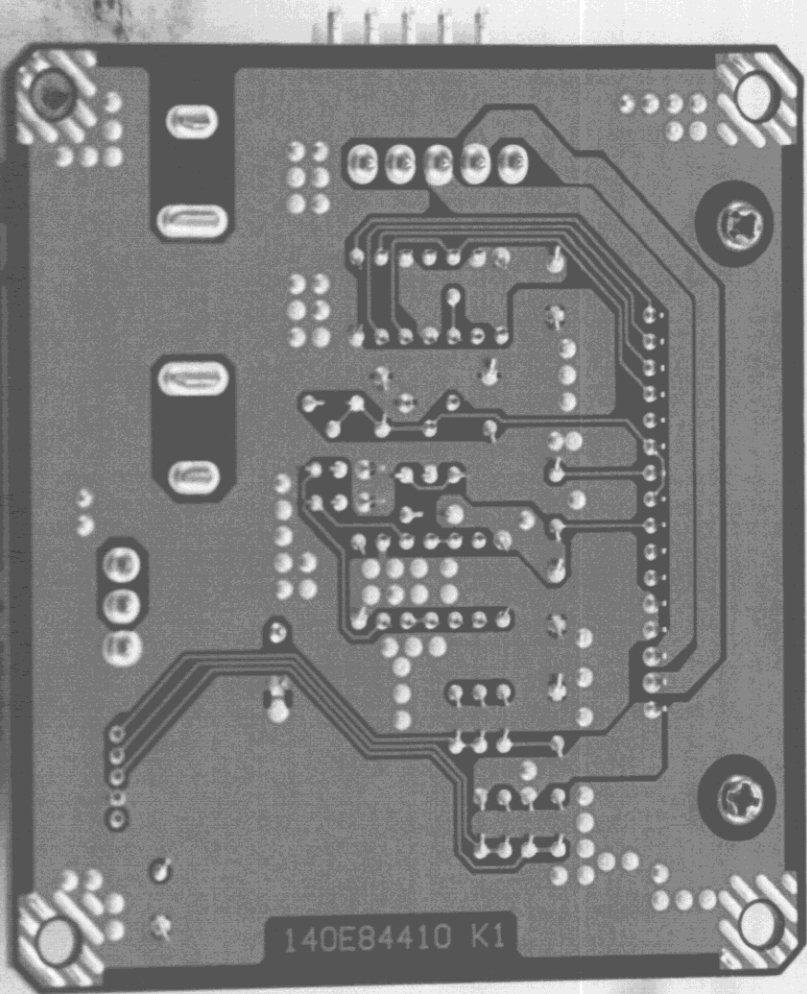
FCC ID : BKMFBYBA-1

21) Mechanism control board side B.



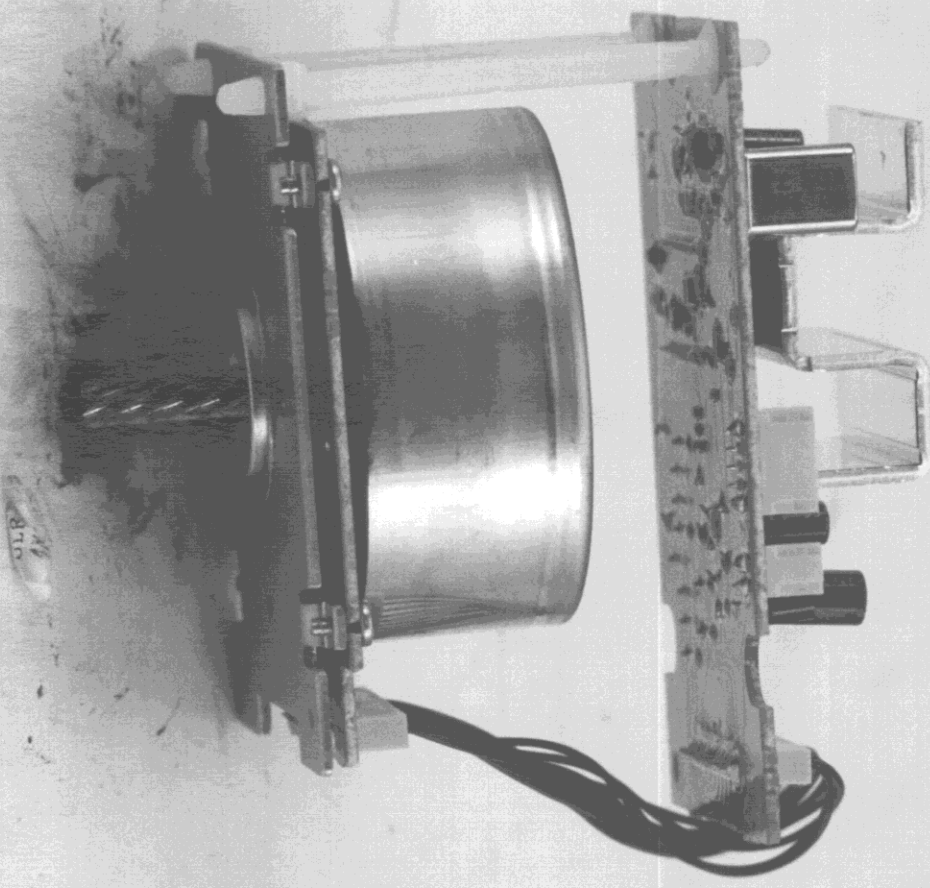
22) No.1 Motor control board side A.

FCC ID : BKMFYBA-1

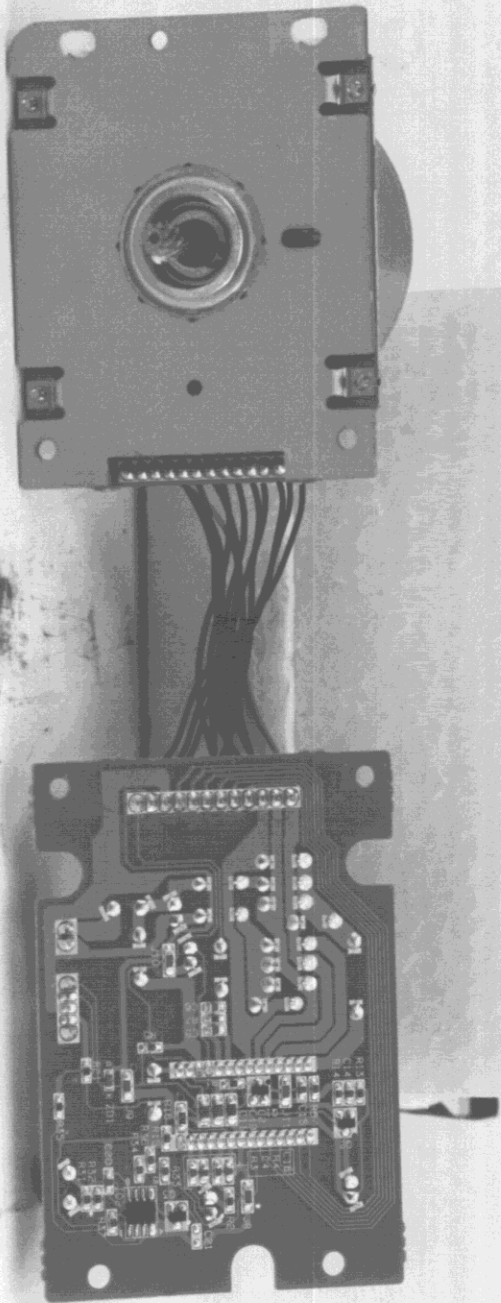


140E84410 K1

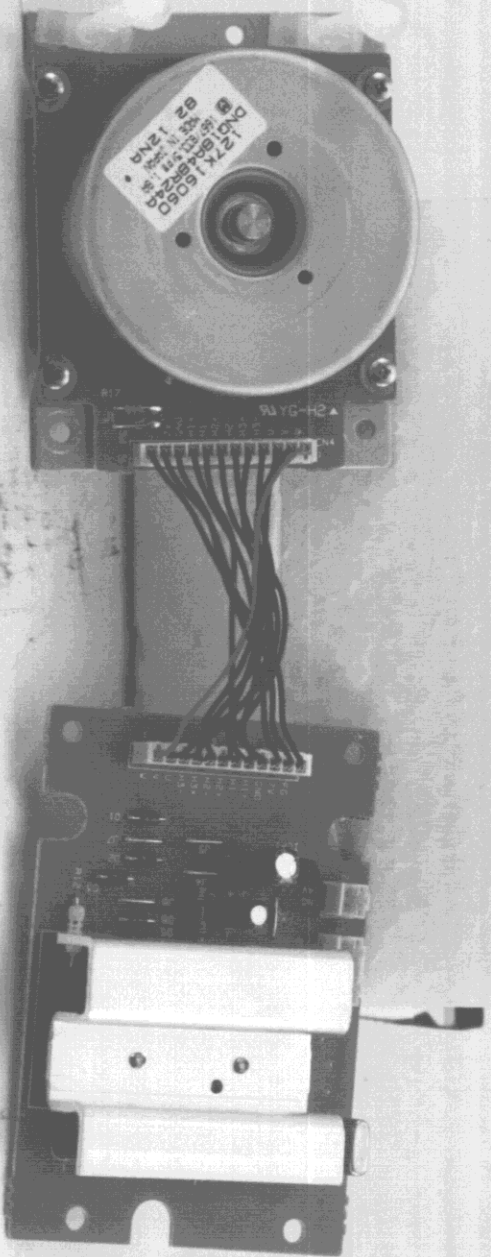
FCC ID : BKMBYBA-1
23) No.1 Motor control board side B.



FCC ID : BKMFBYBA-1
24) No.2 Motor & Motor control board.



FCC ID : BKMPBYBA-1
25) No.2 Motor & Motor control board side A.



FCC ID : BKMFBYBA-1
26) No.2 Motor & Motor control board side B.



FCC ID : BKMFBYBA-1
27) No.3 Motor & Motor control board side A.