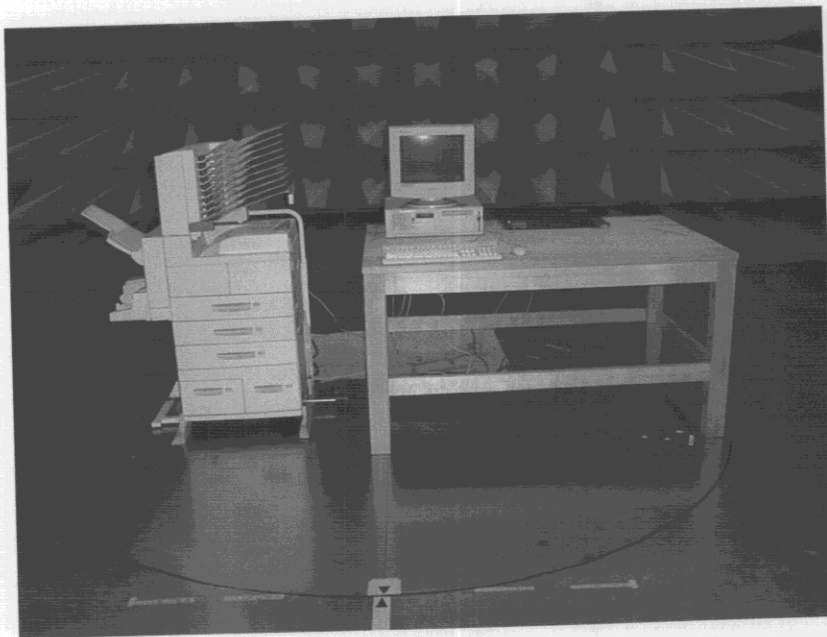


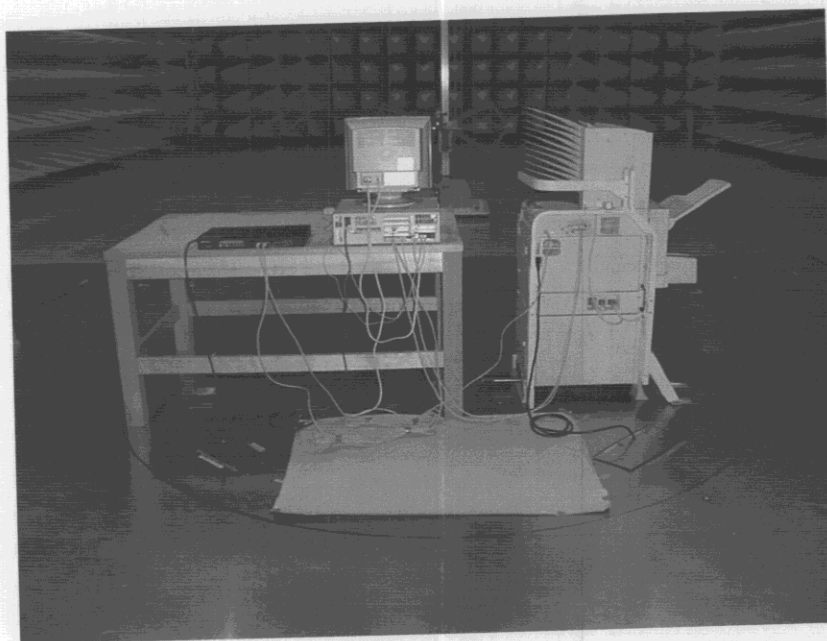
EPSON

SEIKO EPSON CORPORATION

4-4 Photographs of Radiated Emission Test



Front view



Rear view

Test set-up complies with ANSI C63.4 - 1992

This configuration of the equipment and cable produce the highest radiated emissions.

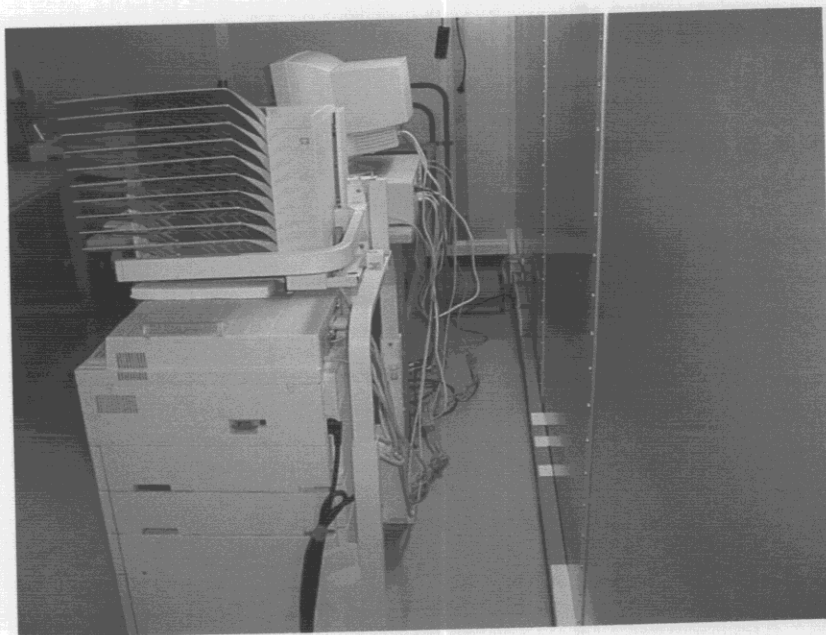
EPSON

SEIKO EPSON CORPORATION

4-2 Photographs of Conducted Emission Test



Front view



Rear view

Test set-up complies with ANSI C63.4 - 1992

This configuration of the equipment and cable produce the highest conducted emissions.